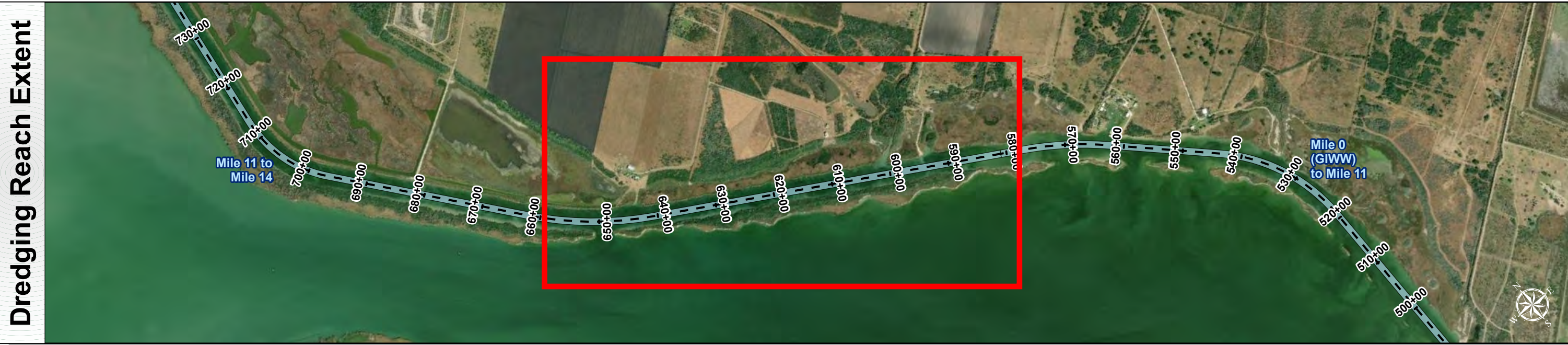


# Channel to Victoria: Mile 11 to Mile 14



U.S. Army Corps of Engineers  
Galveston District



Channel Features

Channel Center Line

Channel Toe

Channel Station Lines

Channel Dimensions

Aids to Navigation

Green Side Aids

Red Side Aids

Lights

MLLW

0 - 4

4 - 6

6 - 8

8 - 10

10 - 12

12 - 14

14 - 16

16 - 18

< 18

NOTES:  
1. Horizontal coordinates are referenced to Texas state plane coordinate system, south central zone nad83 us survey feet.  
2. Elevations are referenced to mean lower low tide (MLLW) datum.  
3. This project was designed by the Galveston District of the U.S. Army Corps of Engineers. The initials and signatures and registration designations of individuals appear on these project documents within the scope of their employment as required by 47 CFR 111.115-111.117.  
4. The information depicted on this survey map represents the results of surveys made on the dates indicated and can only be considered as indicating the general conditions existing at that time. These conditions are subject to rapid change due to shoaling events. A prudent mariner should not rely exclusively on the information provided here. Required by 33 CFR 209.325.  
5. For the most up to date information please check our website at: <http://www.usace.army.mil/Missions/Navigation/HydrographicSurveys/>  
Service Layer Credits: World Topographic Map: Texas Parks & Wildlife, Esri, HERE, Garmin, INCREMENT P, USGS, METINASA, NGA, EPA, USDA  
World Ocean Base: Esri, GEBCO, DeLorme, NaturalVue  
World Imagery: Maxar

Additional Combined Survey Dates and Stationing:  
COMB\_SURV\_INFO\_HERE

Coordinate System: NAD 1983 StatePlane Texas South Central FIPS 4204 Feet  
Projection: Lambert Conformal Conic

Dredging Reach Extent

0

0.3

0.6

1.2

Miles

Hydrographic Survey Extent

0

255

510

1,020

Feet

Latest Survey Collection Date: 19 April 2023		Authorized Depth: -14ft.	
Document Page: 1 of 3	Website Index Number: 14	Side Slope Ratio: 1:3 (Rise : Run)	
Scale: 1:3,000		PDF Print Date: 4/25/2023	
Mapped by: M3AOXPAC			
Additional Imagery info:			

HYDROGRAPHIC SURVEY

U.S. ARMY ENGINEER DISTRICT  
CORPS OF ENGINEERS  
GALVESTON, TEXAS

Station: 581+00 to 740+00

CHANNEL TO VICTORIA

Mile 11 to Mile 14



# Channel to Victoria: Mile 11 to Mile 14



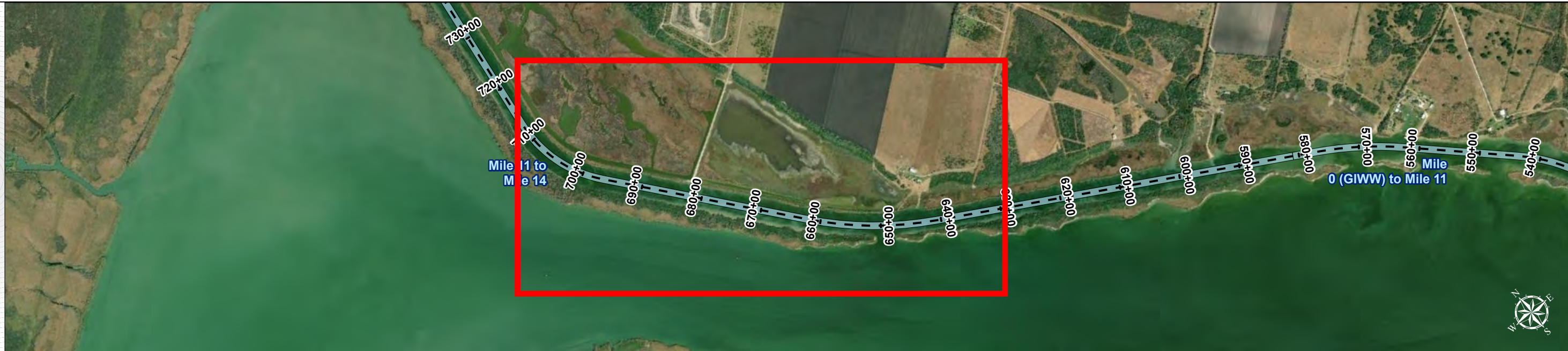
U.S. Army Corps of Engineers  
Galveston District



Regional Extent



Dredging Reach Extent



Channel Features

- Channel Center Line
- Channel Toe
- Channel Station Lines
- Channel Dimensions

Aids to Navigation

- Green Side Aids
- Red Side Aids
- Lights

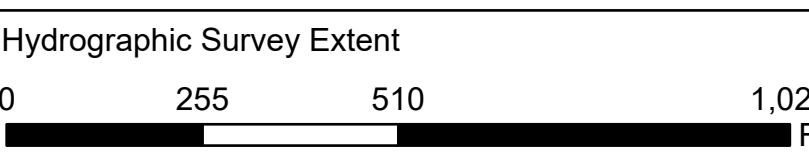
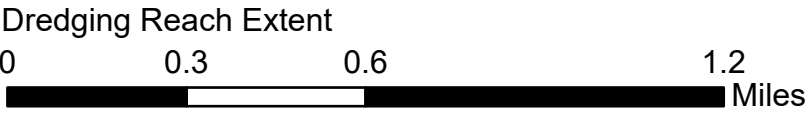
MLLW



NOTES:  
1. Horizontal coordinates are referenced to Texas state plane coordinate system, south central zone nad83 us survey feet.  
2. Elevations are referenced to mean lower low tide (MLLW) datum.  
3. This project was designed by the Galveston District of the U.S. Army Corps of Engineers. The initials and signatures and registration designations of individuals appear on these project documents within the scope of their employment as required by 47 CFR 111.11-111.12.  
4. The information depicted on this survey map represents the results of surveys made on the dates indicated and can only be considered as indicating the general conditions existing at that time. These conditions are subject to rapid change due to shoaling events. A prudent mariner should not rely exclusively on the information provided here. Required by 33 CFR 209.325.  
5. For the most up to date information please check our website at: <http://www.svg.usace.army.mil/Missions/Navigation/HydrographicSurveys/>  
Service Layer Credits: World Topographic Map: Texas Parks & Wildlife, Esri, HERE, Garmin, INCREMENT P, USGS, MET/NASA, NGA, EPA, USDA  
World Ocean Base: Esri, GEBCO, DeLorme, NaturalVue  
World Imagery: Maxar

Additional Combined Survey Dates and Stationing:  
COMB\_SURV\_INFO\_HERE

Coordinate System: NAD 1983 StatePlane Texas South Central FIPS 4204 Feet  
Projection: Lambert Conformal Conic



HYDROGRAPHIC SURVEY

U.S. ARMY ENGINEER DISTRICT  
CORPS OF ENGINEERS  
GALVESTON, TEXAS

Station: 581+00 to 740+00  
CHANNEL TO VICTORIA  
Mile 11 to Mile 14



Latest Survey Collection Date: 19 April 2023

Document Page: 2 of 3

Scale: 1:3,000

Mapped by: M3AOXPAC

Additional Imagery info:

Authorized Depth: -14ft.

Side Slope Ratio: 1:3 (Rise : Run)

PDF Print Date: 4/25/2023

Website Index Number: 15



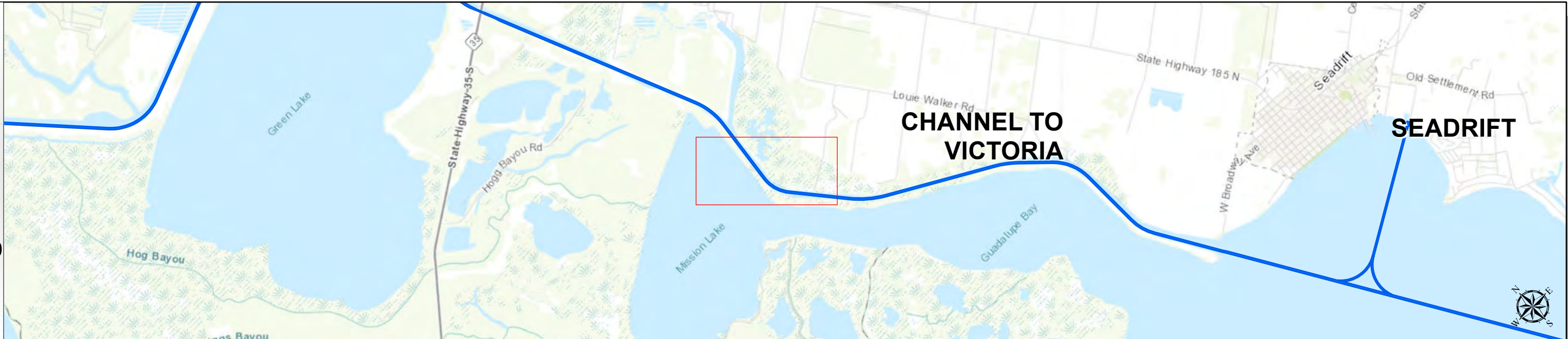
# Channel to Victoria: Mile 11 to Mile 14



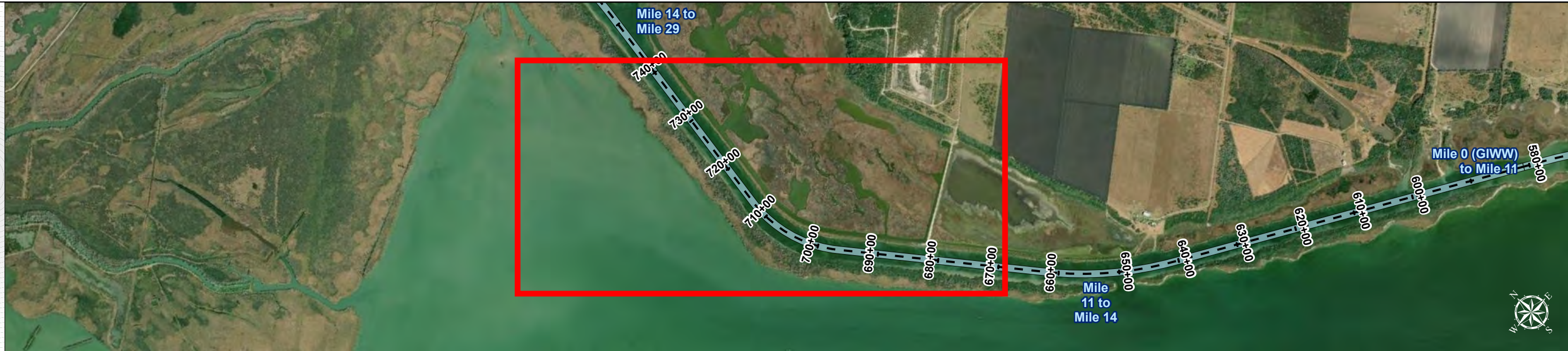
U.S. Army Corps of Engineers  
Galveston District



Regional Extent



Dredging Reach Extent



## Channel Features

- Channel Center Line
- Channel Toe
- Channel Station Lines
- Channel Dimensions

## Aids to Navigation

- Green Side Aids
- Red Side Aids
- Lights

## MLLW

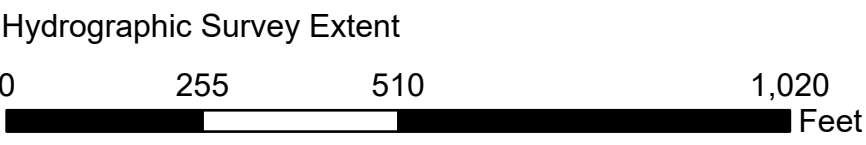
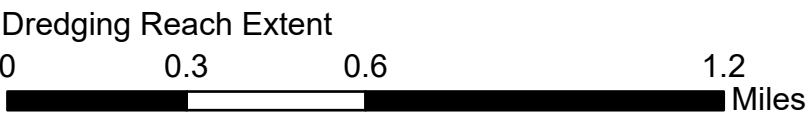


## NOTES:

- Horizontal coordinates are referenced to Texas state plane coordinate system, south central zone nad83 us survey feet.
  - Elevations are referenced to mean lower low tide (MLLW) datum.
  - This project was designed by the Galveston District of the U.S. Army Corps of Engineers. The initials and signatures and registration designations of individuals appear on these project documents within the scope of their employment as required by 47 CFR 111.05-61.02.
  - The information depicted on this survey map represents the results of surveys made on the dates indicated and can only be considered as indicating the general conditions existing at that time. These conditions are subject to rapid change due to shoaling events. A prudent mariner should not rely exclusively on the information provided here. Required by 33 CFR 209.325.
  - For the most up to date information please check our website at: <http://www.svg.usace.army.mil/Missions/Navigation/HydrographicSurveys/>
- Service Layer Credits: World Topographic Map, Texas Parks & Wildlife, Esri, HERE, Garmin, INCREMENT P, USGS, MET/NASA, NOAA, EPA, USDA, World Ocean Base, Esri, GEBCO, Delorme, NaturalVue, World Imagery, Maxar

Additional Combined Survey Dates and Stationing:  
COMB\_SURV\_INFO\_HERE

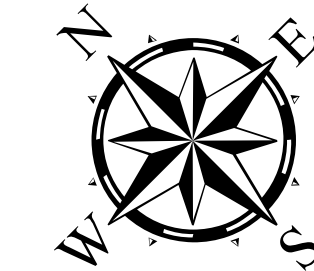
Coordinate System: NAD 1983 StatePlane Texas South Central FIPS 4204 Feet  
Projection: Lambert Conformal Conic



## HYDROGRAPHIC SURVEY

U.S. ARMY ENGINEER DISTRICT  
CORPS OF ENGINEERS  
GALVESTON, TEXAS

Station: 581+00 to 740+00  
CHANNEL TO VICTORIA  
Mile 11 to Mile 14



Latest Survey Collection Date: 19 April 2023

Document Page: 3 of 3

Website Index Number: 16

Scale: 1:3,000

Mapped by: M3AOXPAC

Additional Imagery info:

Authorized Depth: -14ft.

Side Slope Ratio: 1:3 (Rise : Run)

PDF Print Date: 4/25/2023