

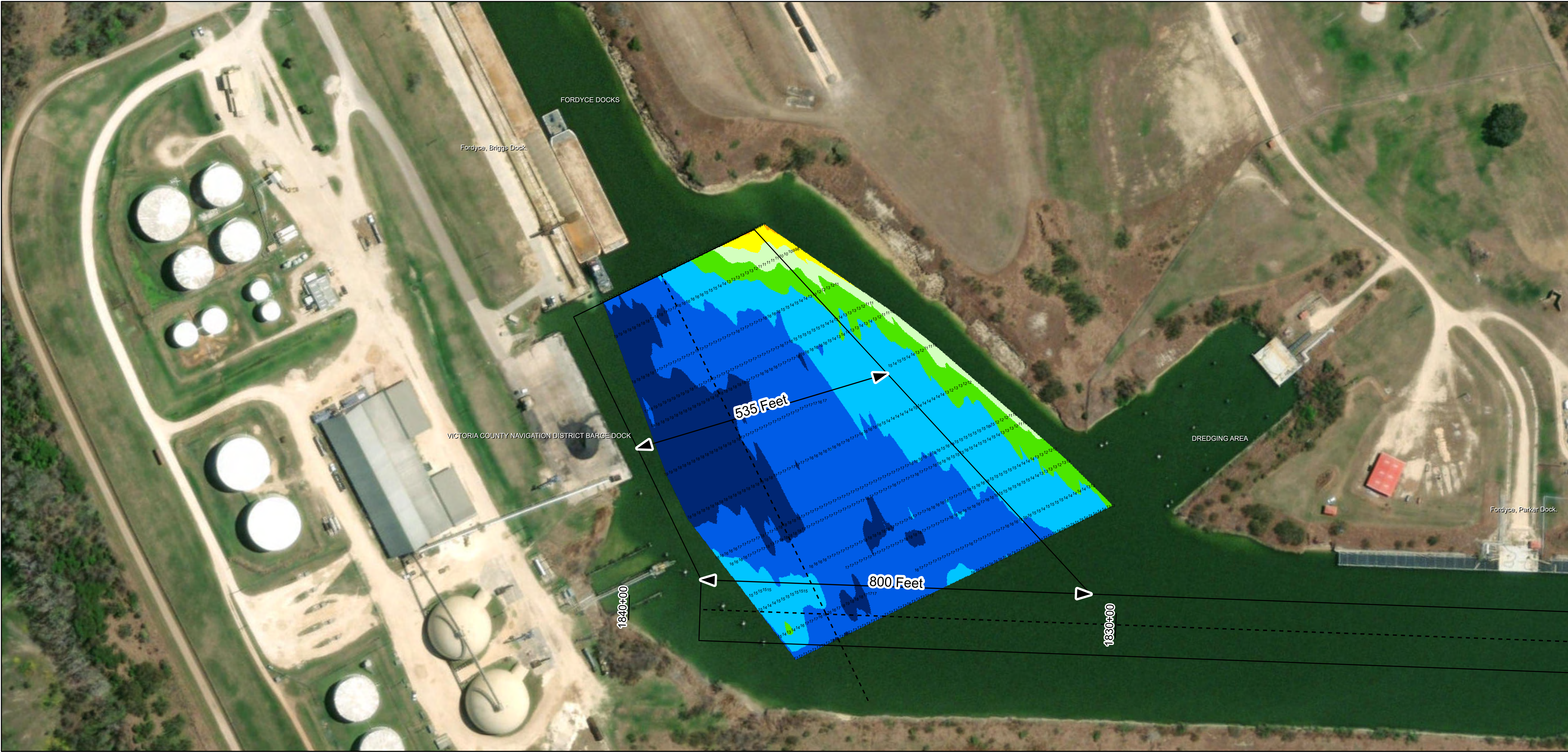
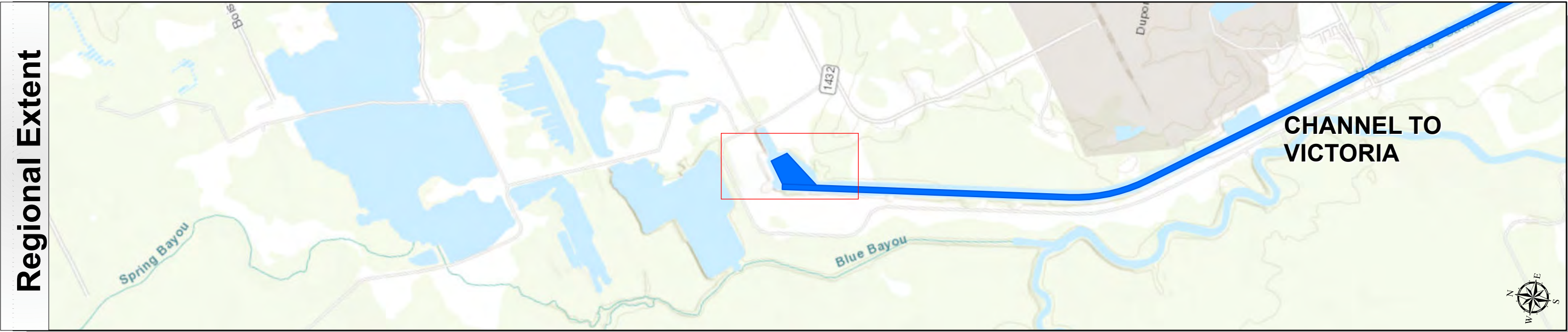
# Channel to Victoria: Turning Basin



U.S. Army Corps of Engineers  
Galveston District



TEXAS



**Channel Features**

- Channel Center Line
- Channel Toe
- Channel Station Lines
- Channel Dimensions

**Aids to Navigation**

- Green Side Aids
- Red Side Aids
- Lights

**MLLW**

0 - 4	4 - 6	6 - 8	8 - 10	10 - 12	12 - 14	14 - 16	16 - 18	< 18
-------	-------	-------	--------	---------	---------	---------	---------	------

**NOTES:**

- Horizontal coordinates are referenced to Texas state plane coordinate system, south central zone nad83 us survey feet.
- Elevations are referenced to mean lower low tide (MLLW) datum.
- This project was designed by the Galveston District of the U.S. Army Corps of Engineers. The initials and signatures and registration designations of individuals appear on these project documents within the scope of their employment as required by 47 CFR 111.115-111.117.
- The information depicted on this survey map represents the results of surveys made on the dates indicated and can only be considered as indicating the general conditions existing at that time. These conditions are subject to rapid change due to shoaling events. A prudent mariner should not rely exclusively on the information provided here. Required by 33 CFR 200.325.
- For the most up to date information please check our website at: <http://www.svg.usace.army.mil/Missions/Navigation/HydrographicSurveys/>

Service Layer Credits: World Topographic Map: Texas Parks & Wildlife, Esri, HERE, Garmin, INCREMENT P, USGS, MET/NASA, EPA, USDA  
World Ocean Base: Esri, GEBCO, DeLorme, NaturalVue  
World Imagery: Maxar, Microsoft  
World Imagery: Maxar

Additional Combined Survey Dates and Stationing:  
COMB\_SURV\_INFO\_HERE

Coordinate System: NAD 1983 StatePlane Texas South Central FIPS 4204 Feet  
Projection: Lambert Conformal Conic

Dredging Reach Extent

0 0.13 0.25 0.5 Miles

Hydrographic Survey Extent

0 100 200 400 Feet

Latest Survey Collection Date: 10 May 2023

Document Page: 1 of 1

Scale: 1"=1,200'

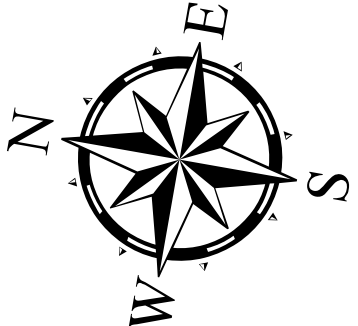
Mapped by: M3AOXPAC

Additional Imagery info:

Authorized Depth: -14ft.

Side Slope Ratio: 1:3 (Rise : Run)

PDF Print Date: 5/15/2023



**HYDROGRAPHIC SURVEY**  
U.S. ARMY ENGINEER DISTRICT  
CORPS OF ENGINEERS  
GALVESTON, TEXAS

**Station: 0+00 to 7+13.26**  
**CHANNEL TO VICTORIA**  
Turning Basin