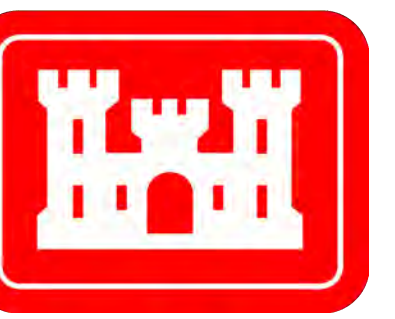


# Houston Ship Channel: Entrance to Greens Bayou to First Bend Above Mouth



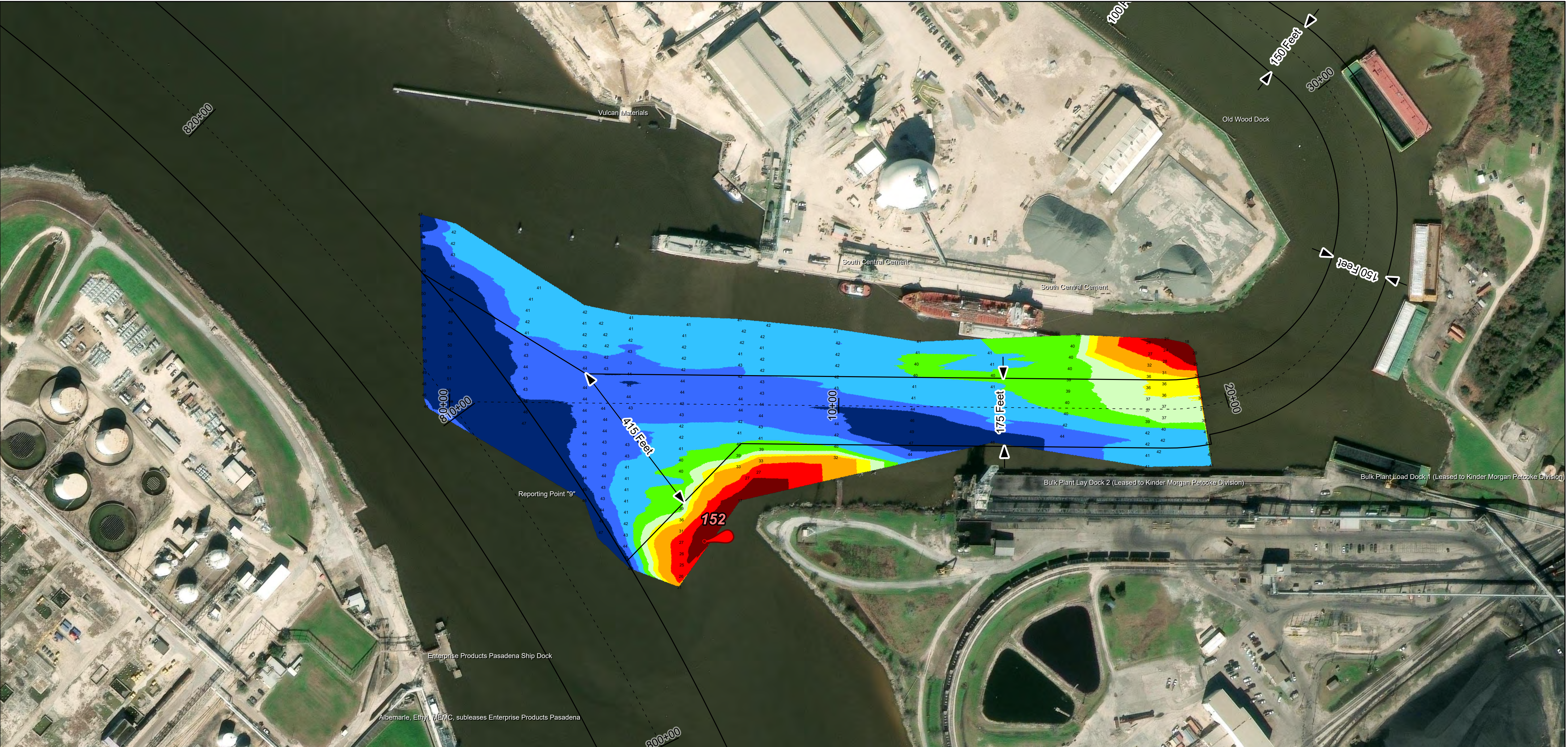
U.S. Army Corps of Engineers  
Galveston District



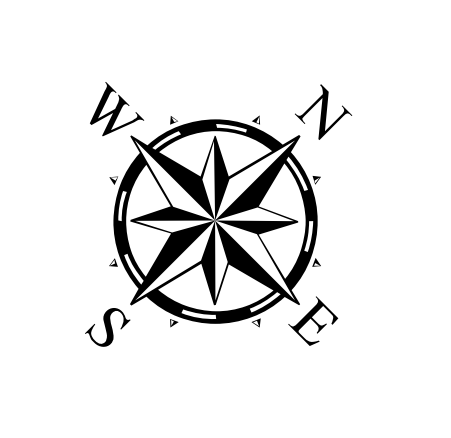
Regional Extent



Dredging Reach Extent



Latest Survey Collection Date: 10 April 2025	Authorized Depth: -41.5ft.
Document Page: 1 of 4	Width Range: 150ft to 905ft
Scale: 1:1,500	Side Slope Ratio: (Rise : Run)
Mapped by: M3AOXPAC	PDF Print Date: 5/7/2025
Additional Imagery info:	
Website Index Number: 1	



**Channel Features**

- Channel Center Line
- Channel Toe
- Channel Dimensions

**Aids to Navigation**

- Green Side Aids
- Red Side Aids
- Lights

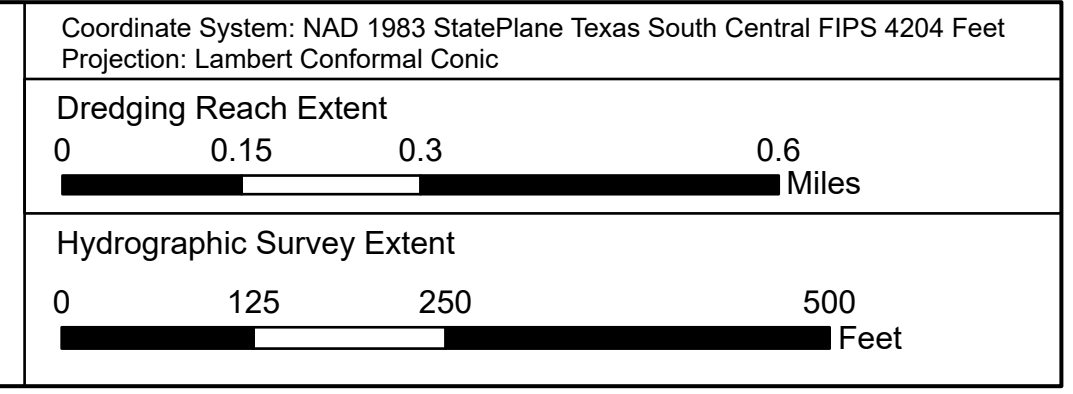
**MLLW**

**NOTES:**

- Horizontal coordinates are referenced to Texas State Plane Coordinate System, South Central Zone NAD83 US Survey Feet.
- Elevations are referenced to Mean Lower Low Water (MLLW) datum.
- This project was designed by the Galveston District of the U.S. Army Corps of Engineers. The initials and signatures and registration designations of individuals appear on these project documents within the scope of their employment as required by 47CFR 117.113-1, 117.113-2.
- The information depicted on this survey map represents the results of surveys made on the dates indicated and can only be considered as indicating the general conditions existing at that time. These conditions are subject to rapid change due to shoaling events. A prudent mariner should not rely exclusively on the information provided here. Required by 33 CFR 209.225.
- For the most up to date information please check our website at: <http://www.svg.usace.army.mil/Missions/Navigation/HydrographicSurveys/>

Service Layer Credits: World Topographic Map: City of Houston, HPB, Texas Parks & Wildlife, Esri, HERE, Garmin, INCREMENT P, USGS, METINASA, EPA, USDA  
World Imagery: Maxar, Microsoft  
World Imagery: Maxar  
World Ocean Base: Esri, GEBCO, Garmin, NaturalVue

Additional Combined Survey Dates and Stationing:  
COMB\_SURV\_INFO\_HERE



**HYDROGRAPHIC SURVEY**  
U.S. ARMY ENGINEER DISTRICT  
CORPS OF ENGINEERS  
GALVESTON, TEXAS

**Station: 0+00 to 19+39.91**  
**HOUSTON**  
Entrance to Greens Bayou to First Bend Above Mouth