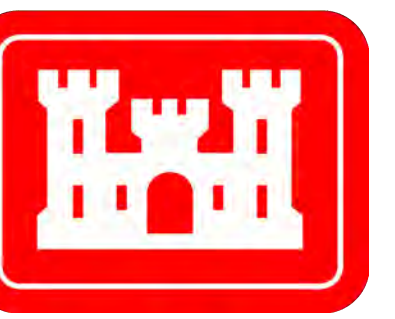
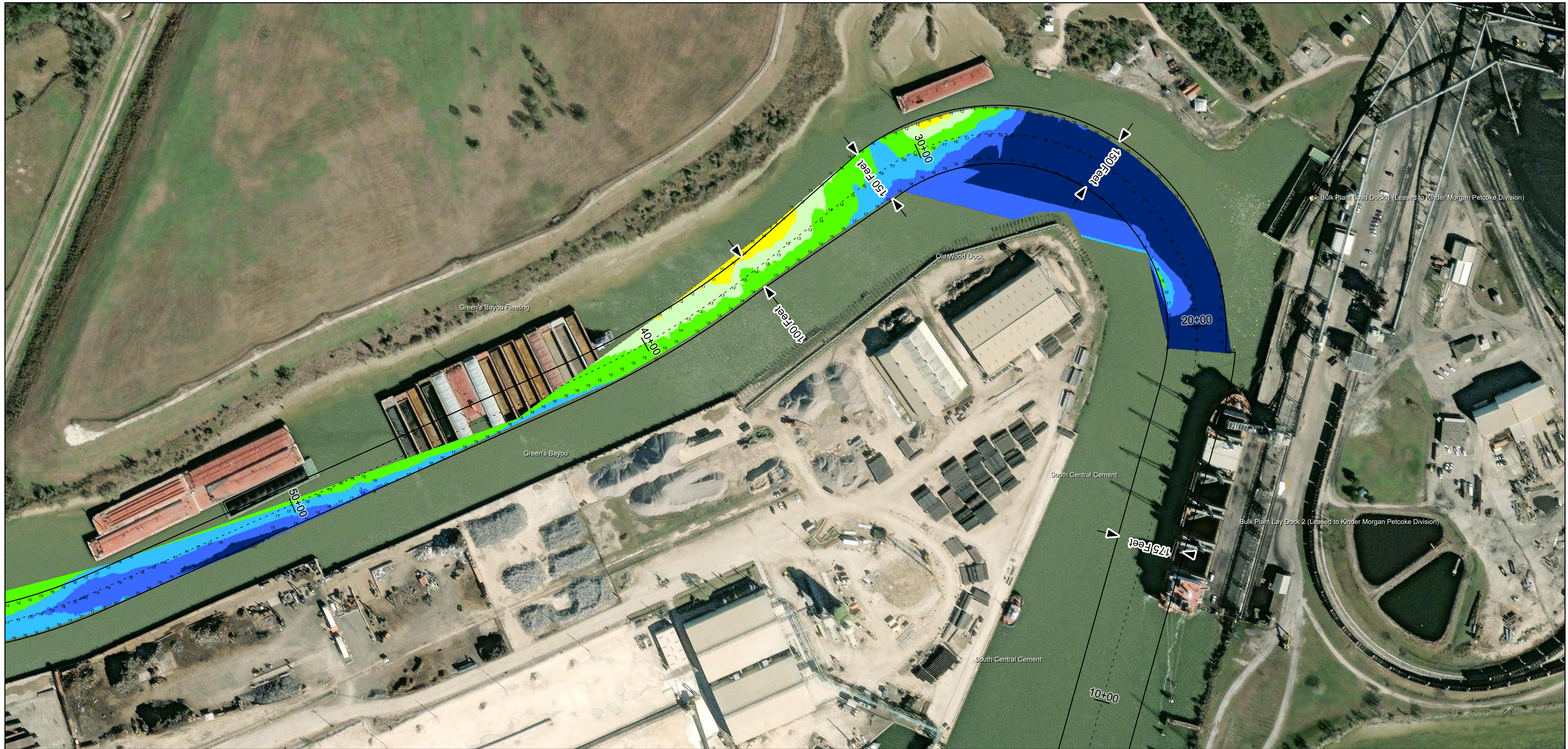
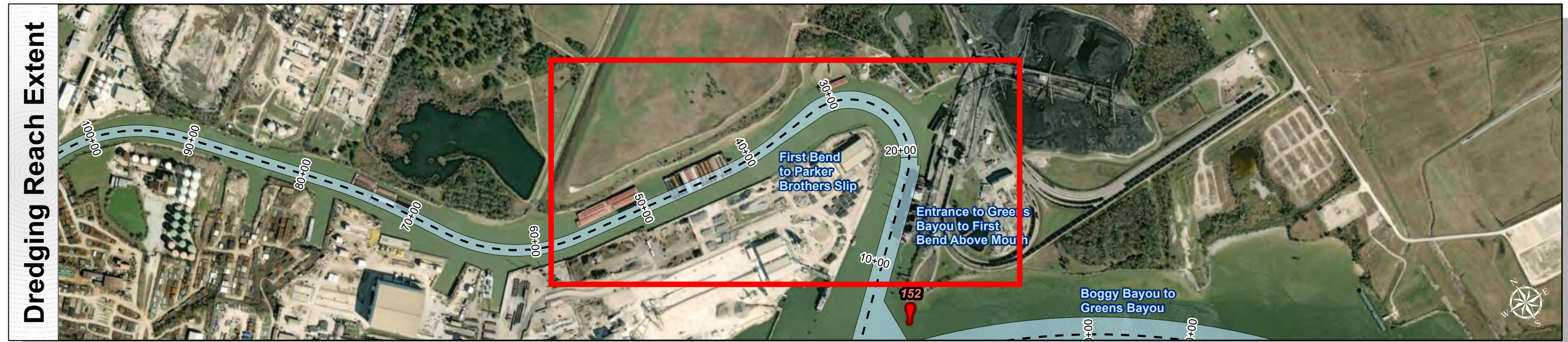


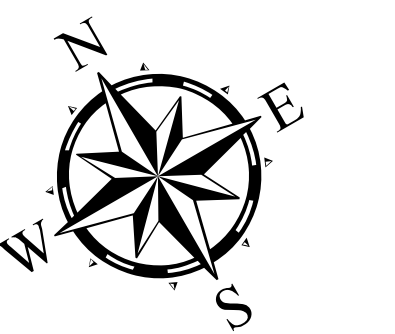
Houston Ship Channel: First Bend to Parker Brothers Slip



U.S. Army Corps of Engineers
Galveston District



Latest Survey Collection Date: 12 July 2024	Authorized Depth: -16ft.
Document Page: 2 of 4	Side Slope Ratio: (Rise : Run)
Scale: 1:1,500	PDF Print Date: 7/13/2024
Mapped by: M3AOXPAC	
Additional Imagery info:	

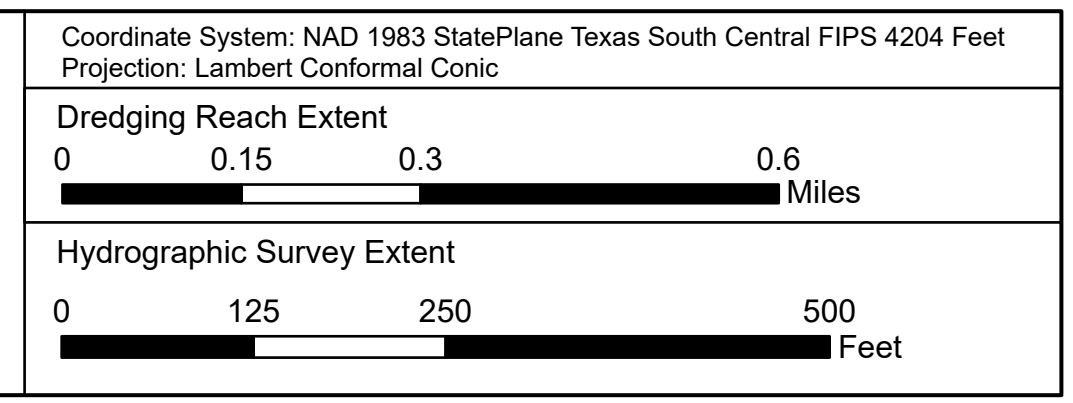


Channel Features	Aids to Navigation
Channel Center Line	Green Side Aids
Channel Toe	Red Side Aids
Channel Dimensions	Lights

NOTES:
 1. Horizontal coordinates are referenced to Texas State Plane Coordinate System, South Central Zone NAD83 US Survey Feet.
 2. Elevations are referenced to Mean Lower Low Water (MLLW) datum.
 3. This project was designed by the Galveston District of the U.S. Army Corps of Engineers. The initials and signatures and registration designations of individuals appear on these project documents within the scope of their employment as required by 47CFR 117.1-18132.
 4. The information depicted on this survey map represents the results of surveys made on the dates indicated and can only be considered as indicating the general conditions existing at that time. These conditions are subject to rapid change due to shoaling events. A prudent mariner should not rely exclusively on the information provided here. Required by 33 CFR 209.225.
 5. For the most up to date information please check our website at: <http://www.svg.usace.army.mil/Missions/Navigation/HydrographicSurveys/>

Service Layer Credits: World Topographic Map: City of Houston, HPB, Texas Parks & Wildlife, Esri, HERE, Garmin, INCREMENT P, USGS, METINASA, EPA, USDA
 World Imagery: Maxar, Microsoft
 World Imagery: Maxar
 World Ocean Base: Esri, GEBCO, Garmin, NaturalVue

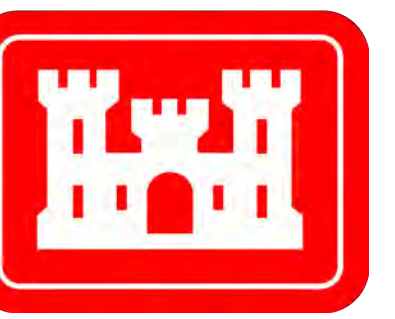
Additional Combined Survey Dates and Stationing:
 COMB_SURV_INFO_HERE



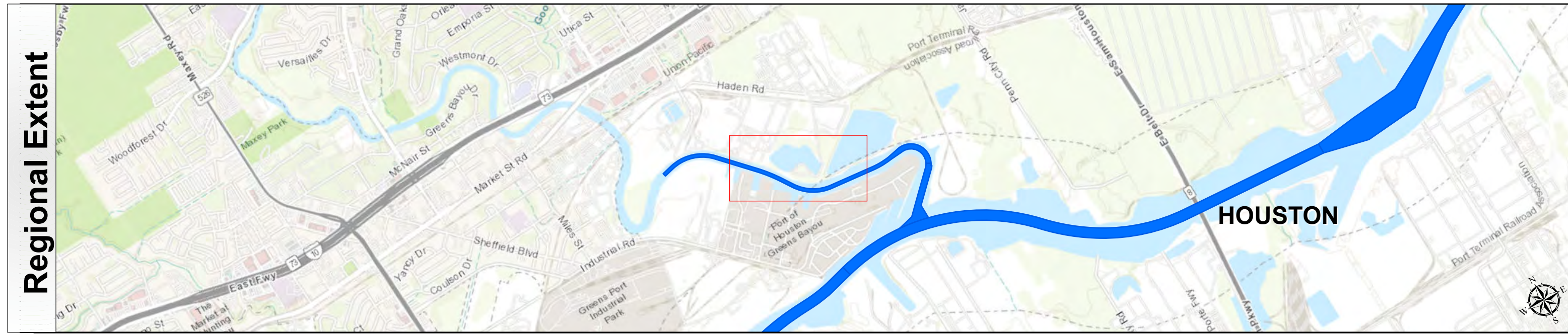
HYDROGRAPHIC SURVEY
 U.S. ARMY ENGINEER DISTRICT
 CORPS OF ENGINEERS
 GALVESTON, TEXAS

Station: 19+39.91 to 108 + 24.464
HOUSTON
 First Bend to Parker Brothers Slip

Houston Ship Channel: First Bend to Parker Brothers Slip



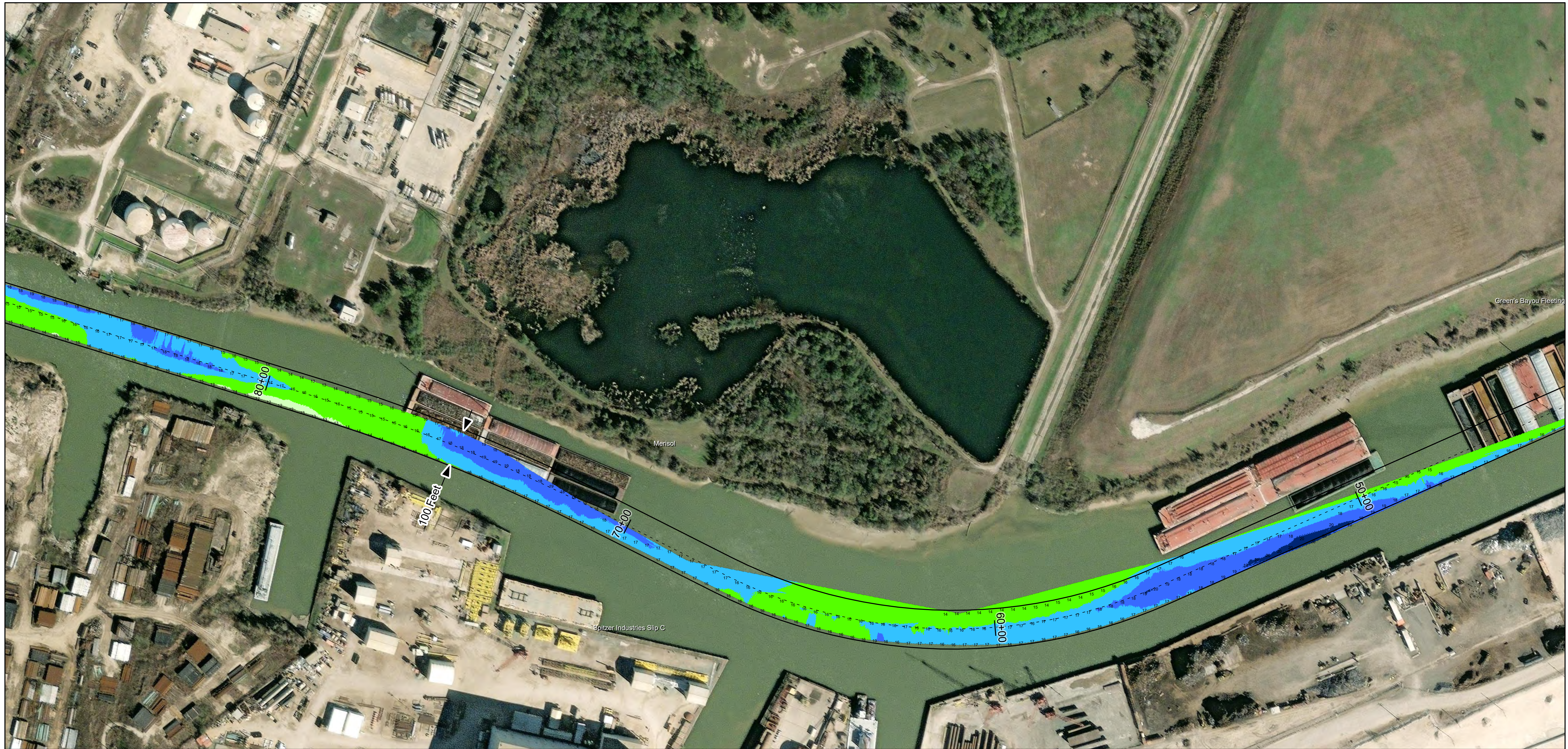
U.S. Army Corps of Engineers
Galveston District



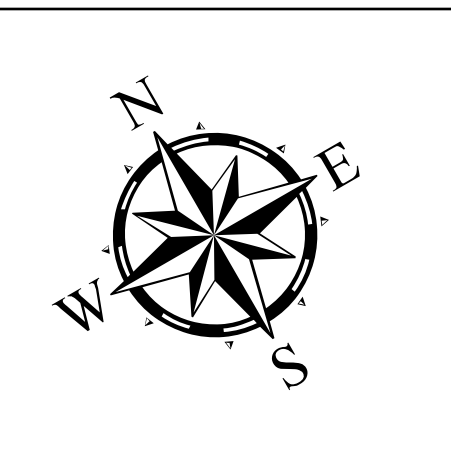
Regional Extent



Dredging Reach Extent



Latest Survey Collection Date: 12 July 2024	Authorized Depth: -16ft.
Document Page: 3 of 4	Side Slope Ratio: (Rise : Run)
Scale: 1:1,500	PDF Print Date: 7/13/2024
Mapped by: M3AOXPAC	
Additional Imagery info:	



Channel Features

- Channel Center Line
- Channel Toe
- Channel Dimensions

Aids to Navigation

- Green Side Aids
- Red Side Aids
- Lights

MLLW

0 - 5	5 - 8	8 - 10	10 - 12	12 - 14	14 - 16	16 - 18	18 - 20	< 20
-------	-------	--------	---------	---------	---------	---------	---------	------

NOTES:

- Horizontal coordinates are referenced to Texas State Plane Coordinate System, South Central Zone NAD83 US Survey Feet.
- Elevations are referenced to Mean Lower Low Water (MLLW) datum.
- This project was designed by the Galveston District of the U.S. Army Corps of Engineers. The initials and signatures and registration designations of individuals appear on these project documents within the scope of their employment as required by 47CFR 117.111-1, §117.112.
- The information depicted on this survey map represents the results of surveys made on the dates indicated and can only be considered as indicating the general conditions existing at that time. These conditions are subject to rapid change due to shoaling events. A prudent mariner should not rely exclusively on the information provided here. Required by 33 CFR 209.225
- For the most up to date information please check our website at: <http://www.svg.usace.army.mil/Missions/Navigation/HydrographicSurveys/>

Service Layer Credits: World Topographic Map: City of Houston, HPB, Texas Parks & Wildlife, Esri, HERE, Garmin, INCREMENT P, USGS, METINASA, EPA, USDA
World Imagery: Maxar, Microsoft
World Imagery: Maxar
World Ocean Base: Esri, GEBCO, Garmin, NaturalVue

Additional Combined Survey Dates and Stationing:
COMB_SURV_INFO_HERE

Coordinate System: NAD 1983 StatePlane Texas South Central FIPS 4204 Feet
Projection: Lambert Conformal Conic

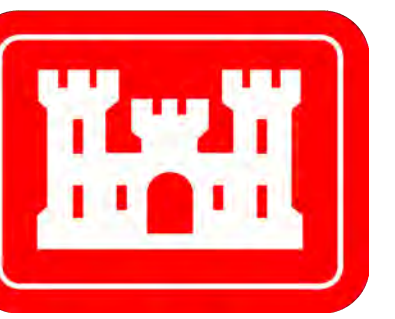
Dredging Reach Extent

Hydrographic Survey Extent

HYDROGRAPHIC SURVEY
U.S. ARMY ENGINEER DISTRICT
CORPS OF ENGINEERS
GALVESTON, TEXAS

Station: 19+39.91 to 108 + 24.464
HOUSTON
First Bend to Parker Brothers Slip

Houston Ship Channel: First Bend to Parker Brothers Slip



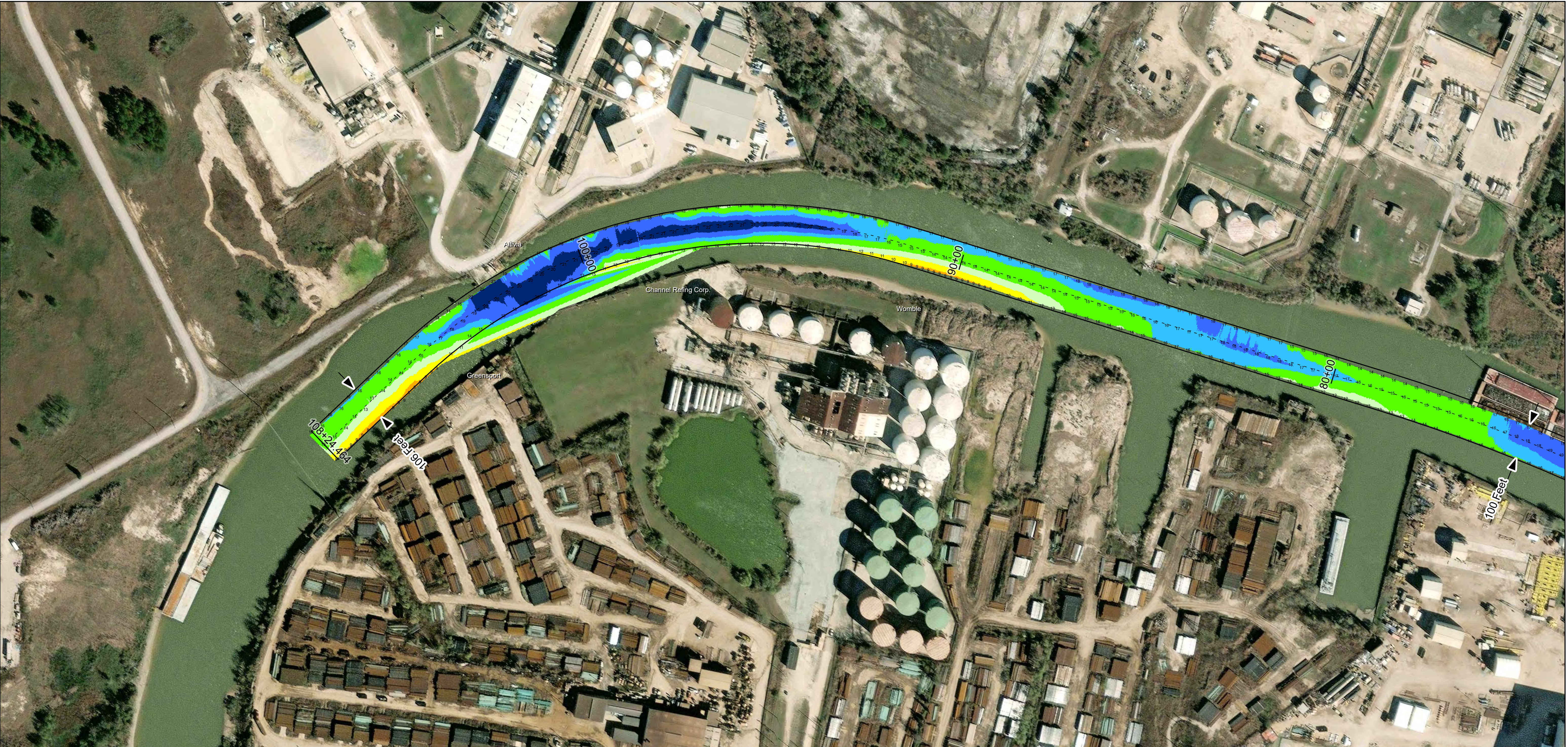
U.S. Army Corps of Engineers
Galveston District



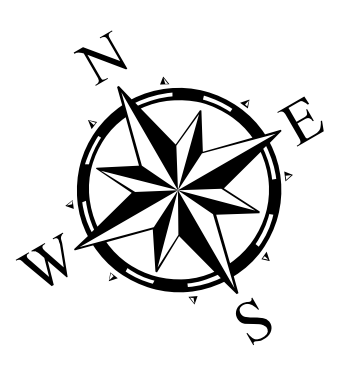
Regional Extent



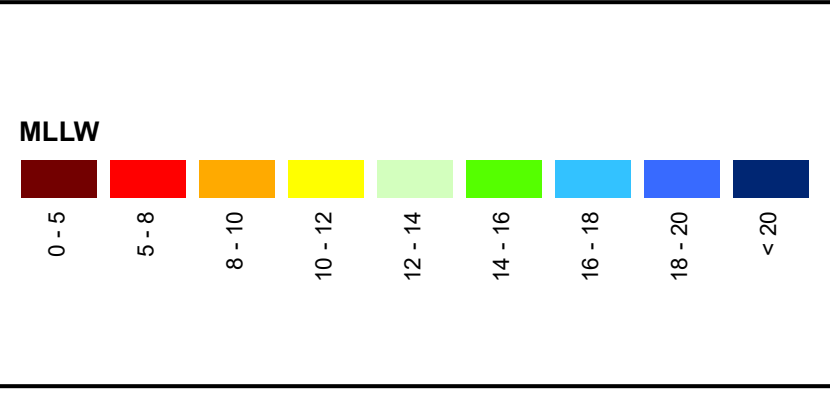
Dredging Reach Extent



Latest Survey Collection Date: 12 July 2024	Authorized Depth: -16ft.
Document Page: 4 of 4	Side Slope Ratio: (Rise : Run)
Scale: 1:1,500	PDF Print Date: 7/13/2024
Mapped by: M3AOXPAC	
Additional Imagery info:	

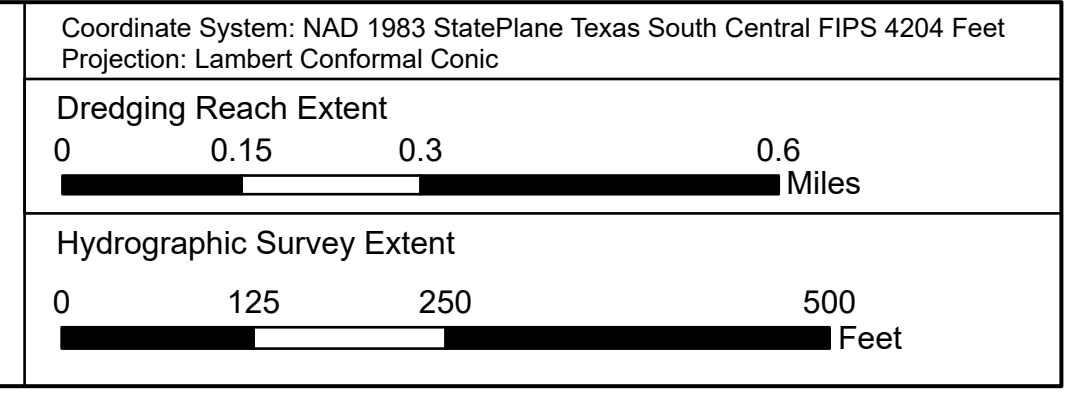


Channel Features	Aids to Navigation
- - - Channel Center Line	Green Side Aids
— Channel Toe	Red Side Aids
↔ Channel Dimensions	Lights



NOTES:
 1. Horizontal coordinates are referenced to Texas State Plane Coordinate System, South Central Zone NAD83 US Survey Feet.
 2. Elevations are referenced to Mean Lower Low Water (MLLW) datum.
 3. This project was designed by the Galveston District of the U.S. Army Corps of Engineers. The initials and signatures and registration designations of individuals appear on these project documents within the scope of their employment as required by er1110-1-8132.
 4. The information depicted on this survey map represents the results of surveys made on the dates indicated and can only be considered as indicating the general conditions existing at that time. These conditions are subject to rapid change due to shoaling events. A prudent mariner should not rely exclusively on the information provided here. Required by 33 CFR 209.225.
 5. For the most up to date information please check our website at: <http://www.svg.usace.army.mil/Missions/Navigation/HydrographicSurveys/>
 Service Layer Credits: World Topographic Map: City of Houston, HPB, Texas Parks & Wildlife, Esri, HERE, Garmin, INCREMENT P, USGS, METINASA, EPA, USDA
 World Imagery: Maxar, Microsoft
 World Imagery: Maxar
 World Ocean Base: Esri, GEBCO, Garmin, NaturalVue

Additional Combined Survey Dates and Stationing:
 COMB_SURV_INFO_HERE



HYDROGRAPHIC SURVEY
 U.S. ARMY ENGINEER DISTRICT
 CORPS OF ENGINEERS
 GALVESTON, TEXAS
Station: 19+39.91 to 108 + 24.464
HOUSTON
 First Bend to Parker Brothers Slip