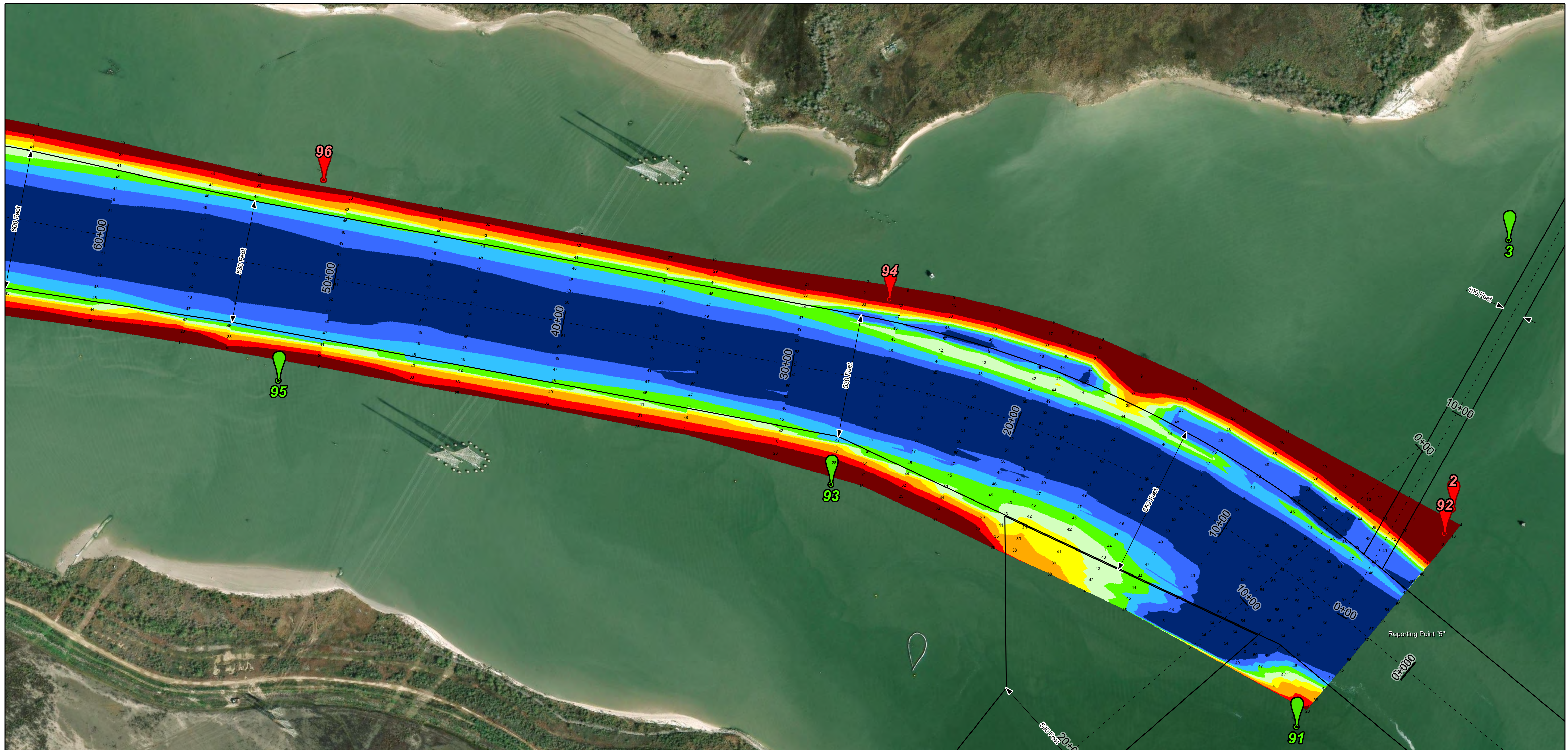
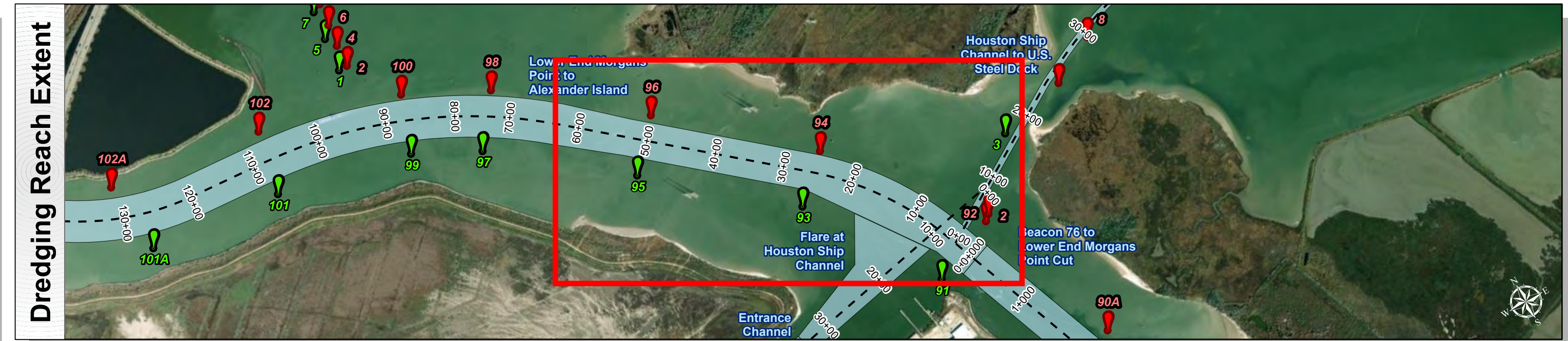
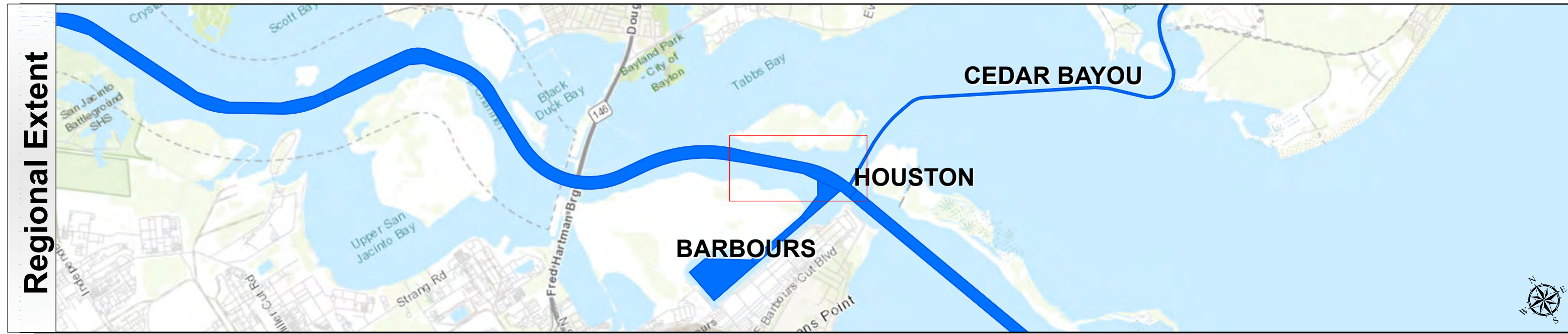


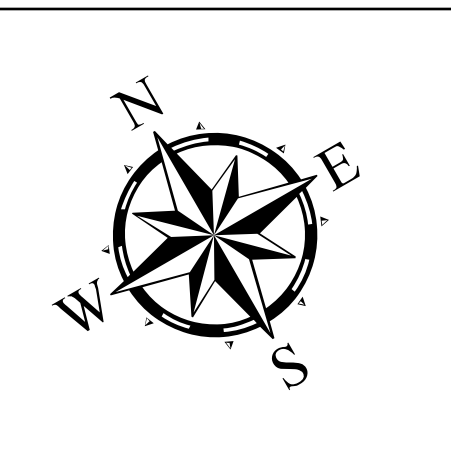
# Houston Ship Channel: Lower End Morgans Point to Alexander Island



U.S. Army Corps of Engineers  
Galveston District



Latest Survey Collection Date: 04 March 2025	Authorized Depth: -46.5ft.
Document Page: 1 of 5	Width Range: 530ft to 600ft
Scale: 1:2,500	Side Slope Ratio: 1:2.5 (Rise : Run)
Mapped by: M3AOXPAC	PDF Print Date: 3/12/2025
Additional Imagery info:	

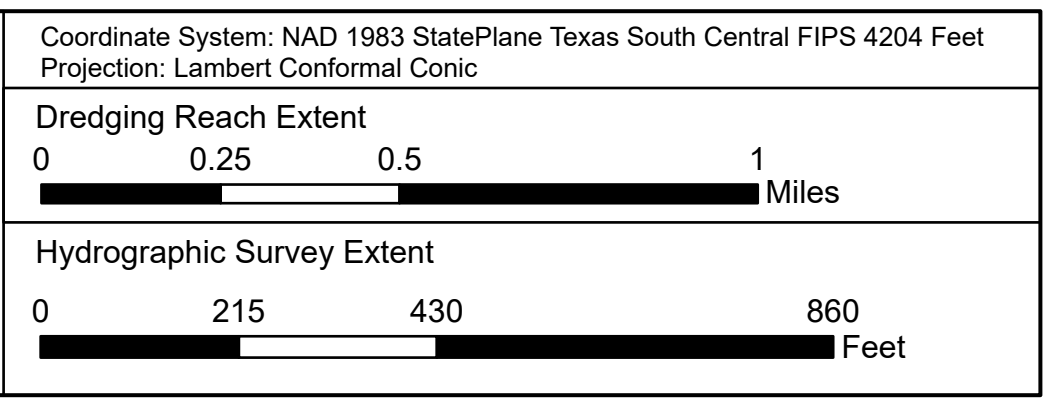


<b>Channel Features</b>	<b>Aids to Navigation</b>	<b>MLLW</b>
--- Channel Center Line	Green Side Aids	≤ 30
— Channel Toe	Red Side Aids	30 - 35
↔ Channel Dimensions	Lights	35 - 40
		40 - 42
		42 - 44
		44 - 46
		46 - 48
		48 - 50
		> 50

**NOTES:**  
 1. Horizontal coordinates are referenced to Texas State Plane Coordinate System, South Central Zone NAD83 US Survey Feet.  
 2. Elevations are referenced to Mean Lower Low Water (MLLW) datum.  
 3. This project was designed by the Galveston District of the U.S. Army Corps of Engineers. The initials and signatures and registration designations of individuals appear on these project documents within the scope of their employment as required by er1110-1-8132.  
 4. The information depicted on this survey map represents the results of surveys made on the dates indicated and can only be considered as indicating the general conditions existing at that time. These conditions are subject to rapid change due to shoaling events. A prudent mariner should not rely exclusively on the information provided here. Required by 33 CFR 209.325.  
 5. For the most up to date information please check our website at: <http://www.svg.usace.army.mil/Missions/Navigation/HydrographicSurveys/>

Service Layer Credits: World Topographic Map: City of Houston, HPB, Texas Parks & Wildlife, Esri, HERE, Garmin, INCREMENT P, USGS, METINASA, NGA, EPA, USDA  
 World Imagery: Maxar  
 World Ocean Base: Esri, GEBCO, Garmin, NaturalVue

Additional Combined Survey Dates and Stationing:  
 COMB\_SURV\_INFO\_HERE



**HYDROGRAPHIC SURVEY**  
 U.S. ARMY ENGINEER DISTRICT  
 CORPS OF ENGINEERS  
 GALVESTON, TEXAS

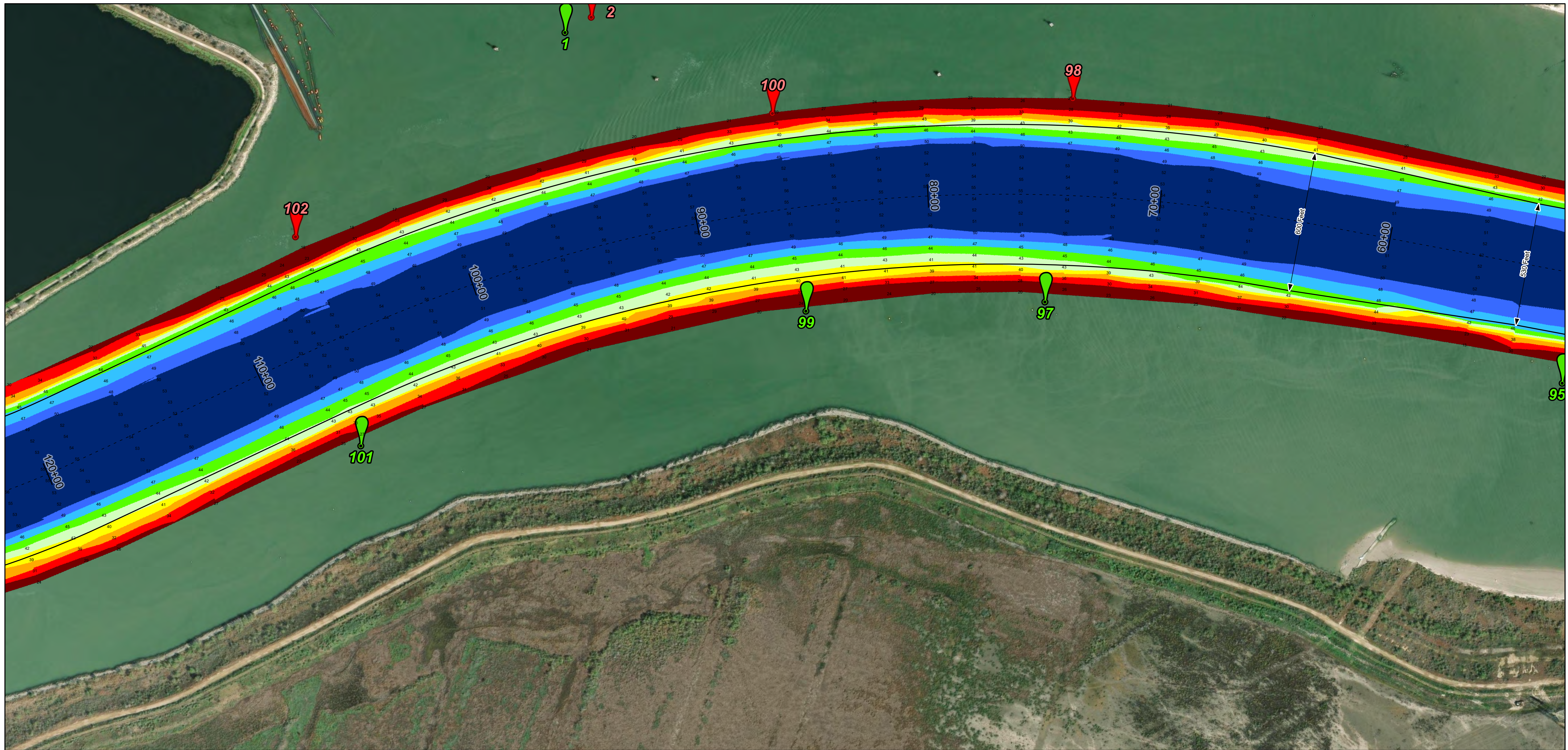
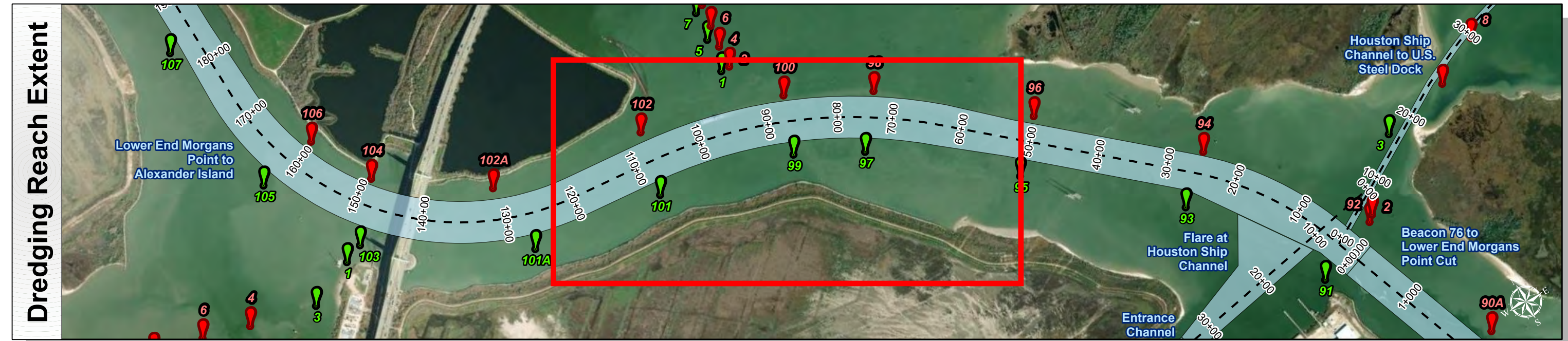
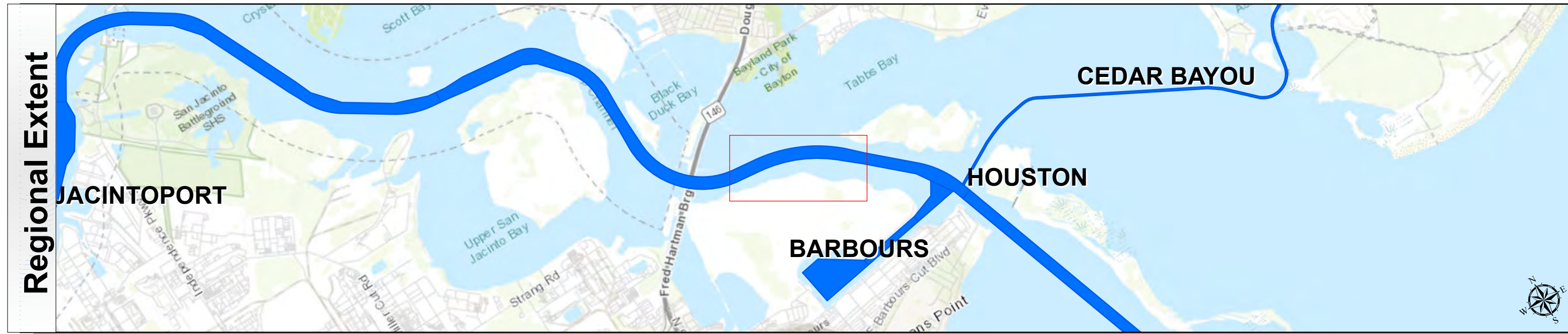
**Station: 0+000 to 295+00**  
**HOUSTON**  
 Lower End Morgans Point to Alexander Island



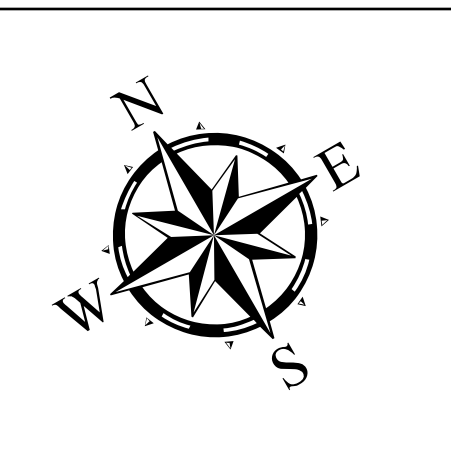
# Houston Ship Channel: Lower End Morgans Point to Alexander Island



U.S. Army Corps of Engineers  
Galveston District



Latest Survey Collection Date: 04 March 2025	Authorized Depth: -46.5ft.
Document Page: 2 of 5	Width Range: 530ft to 600ft
Scale: 1:2,500	Side Slope Ratio: 1:2.5 (Rise : Run)
Mapped by: M3AOXPAC	PDF Print Date: 3/12/2025
Additional Imagery info:	



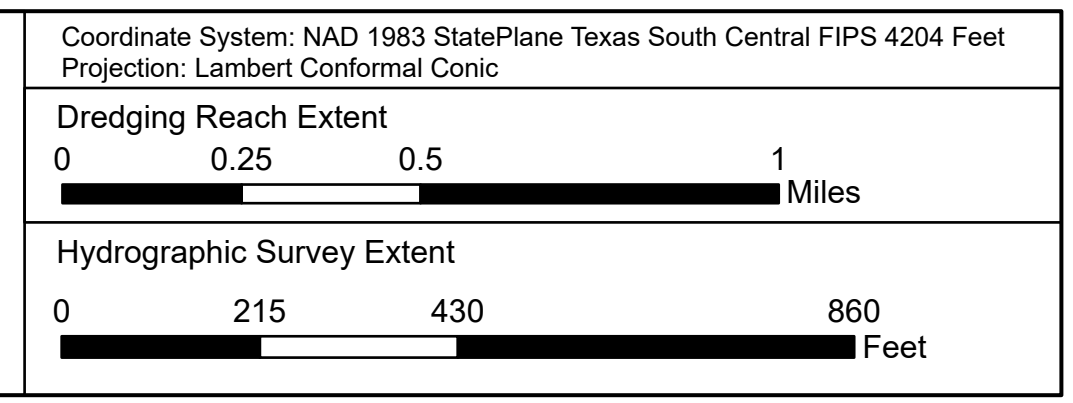
<b>Channel Features</b>	<b>Aids to Navigation</b>	<b>MLLW</b>
--- Channel Center Line	Green Side Aids	≤ 30
— Channel Toe	Red Side Aids	30 - 35
↔ Channel Dimensions	Lights	35 - 40
		40 - 42
		42 - 44
		44 - 46
		46 - 48
		48 - 50
		> 50

**NOTES:**

- Horizontal coordinates are referenced to Texas State Plane Coordinate System, South Central Zone NAD83 US Survey Feet.
- Elevations are referenced to Mean Lower Low Water (MLLW) datum.
- This project was designed by the Galveston District of the U.S. Army Corps of Engineers. The initials and signatures and registration designations of individuals appear on these project documents within the scope of their employment as required by er1110-4132.
- The information depicted on this survey map represents the results of surveys made on the dates indicated and can only be considered as indicating the general conditions existing at that time. These conditions are subject to rapid change due to shoaling events. A prudent mariner should not rely exclusively on the information provided here. Required by 33 CFR 209.325
- For the most up to date information please check our website at: <http://www.svg.usace.army.mil/Missions/Navigation/HydrographicSurveys/>

Service Layer Credits: World Topographic Map: City of Houston, HPB, Texas Parks & Wildlife, Esri, HERE, Garmin, INCREMENT P, USGS, METINASA, NGA, EPA, USDA  
World Imagery: Maxar  
World Ocean Base: Esri, GEBCO, Garmin, NaturalVue

Additional Combined Survey Dates and Stationing:  
COMB\_SURV\_INFO\_HERE



**HYDROGRAPHIC SURVEY**  
U.S. ARMY ENGINEER DISTRICT  
CORPS OF ENGINEERS  
GALVESTON, TEXAS

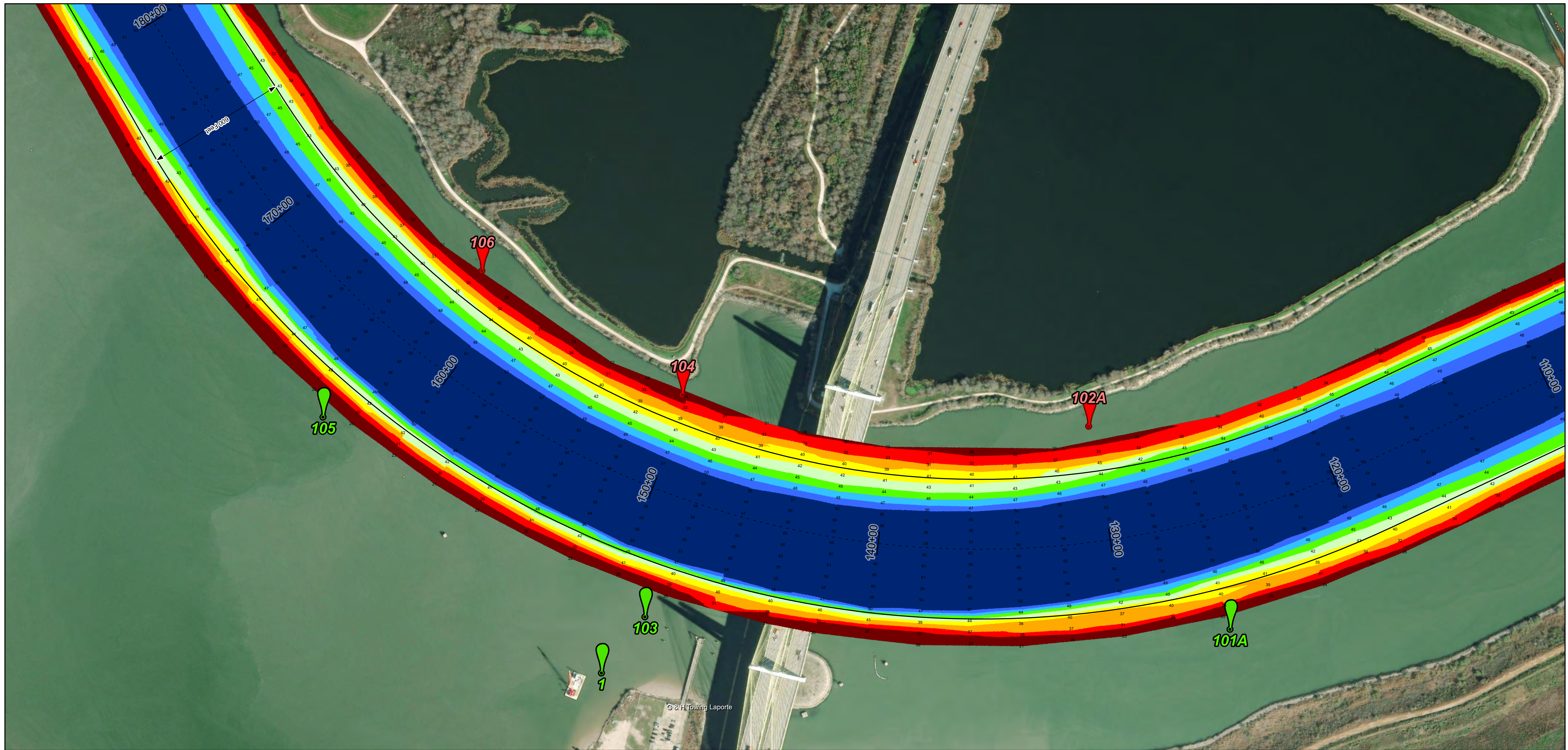
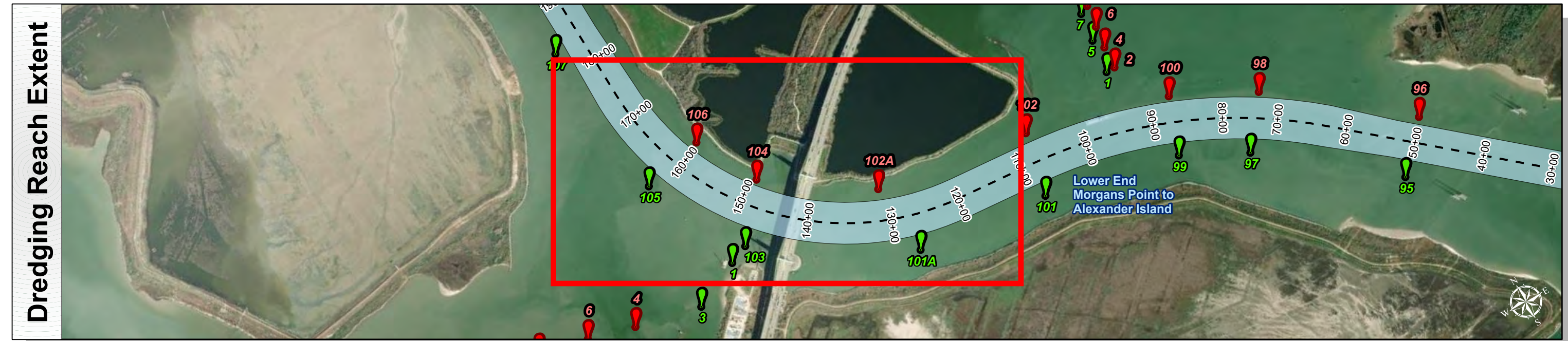
**Station: 0+000 to 295+00**  
**HOUSTON**  
Lower End Morgans Point to Alexander Island



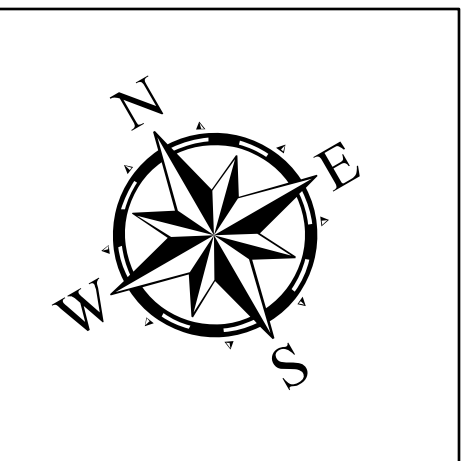
# Houston Ship Channel: Lower End Morgans Point to Alexander Island



U.S. Army Corps of Engineers  
Galveston District



Latest Survey Collection Date: 04 March 2025	Authorized Depth: -46.5ft.
Document Page: 3 of 5	Width Range: 530ft to 600ft
Scale: 1:2,500	Side Slope Ratio: 1:2.5 (Rise : Run)
Mapped by: M3AOXPAC	PDF Print Date: 3/12/2025
Additional Imagery info:	
Website Index Number: 27	



**HYDROGRAPHIC SURVEY**  
U.S. ARMY ENGINEER DISTRICT  
CORPS OF ENGINEERS  
GALVESTON, TEXAS

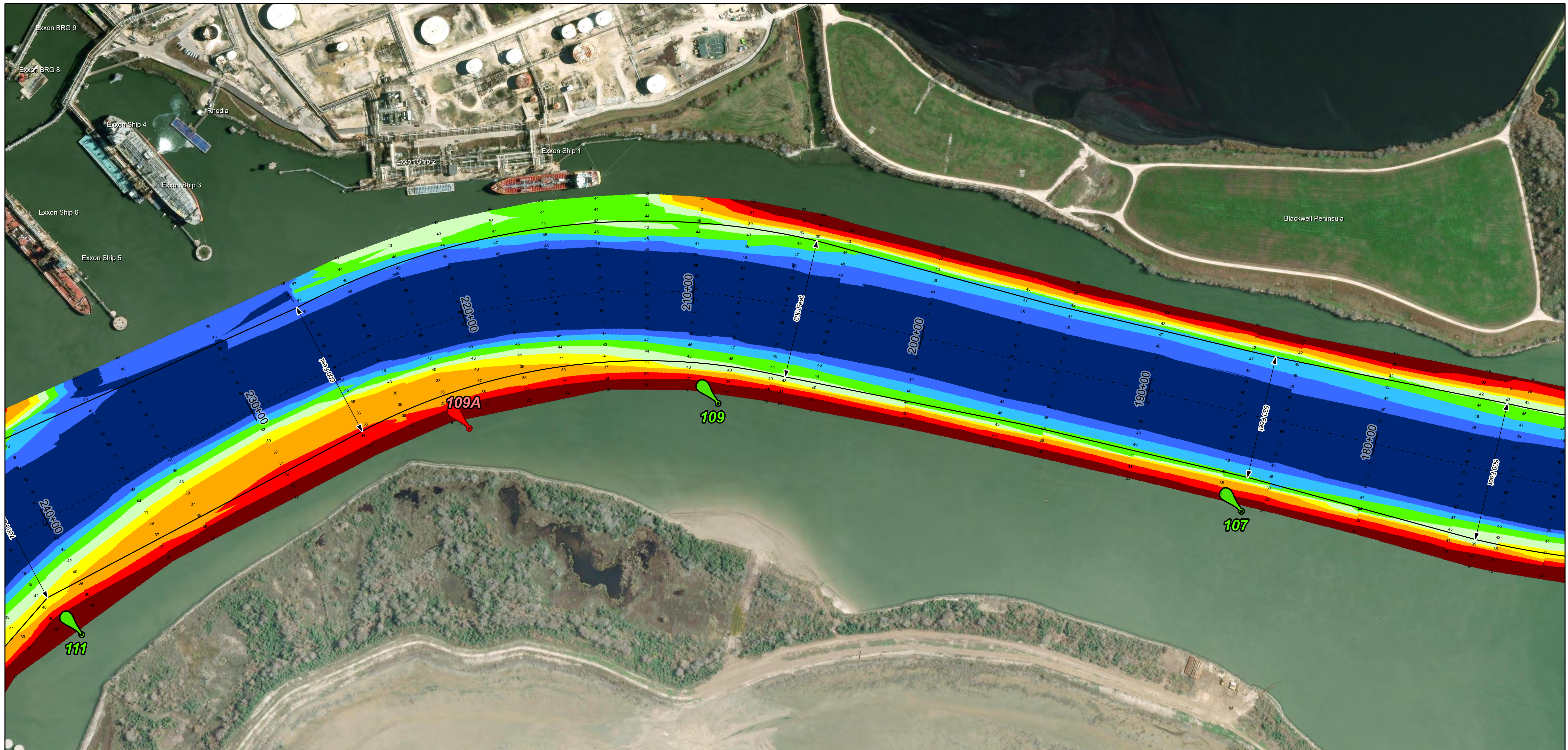
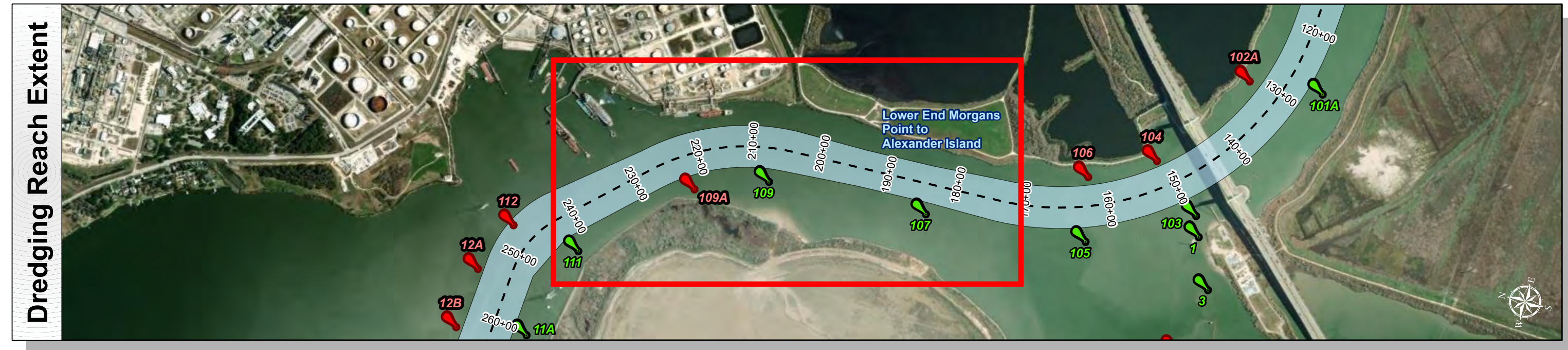
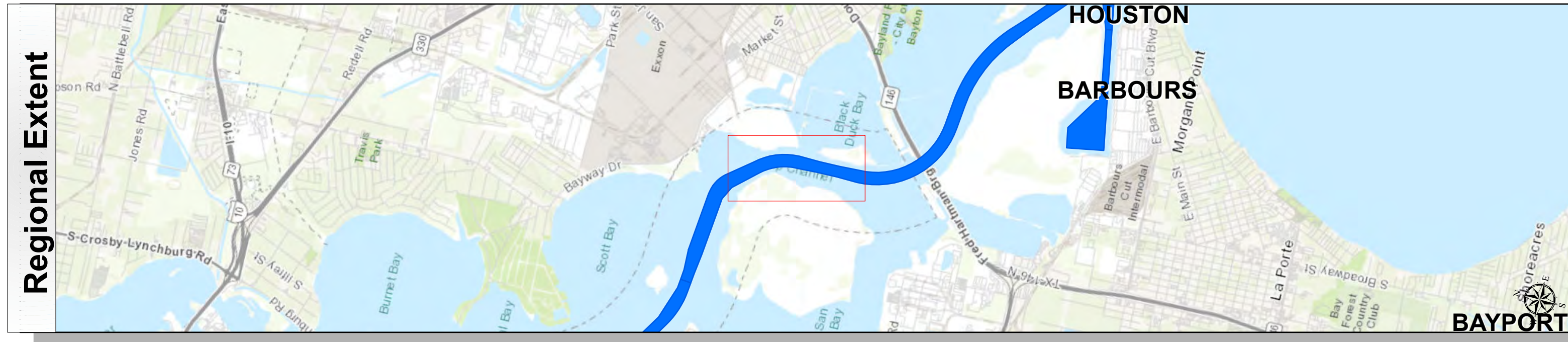
**Station: 0+000 to 295+00**  
**HOUSTON**  
Lower End Morgans Point to Alexander Island



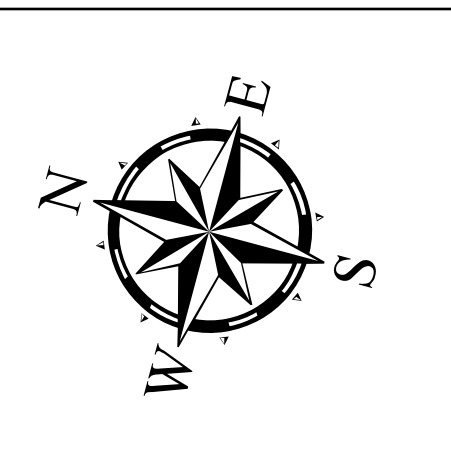
# Houston Ship Channel: Lower End Morgans Point to Alexander Island



U.S. Army Corps of Engineers  
Galveston District



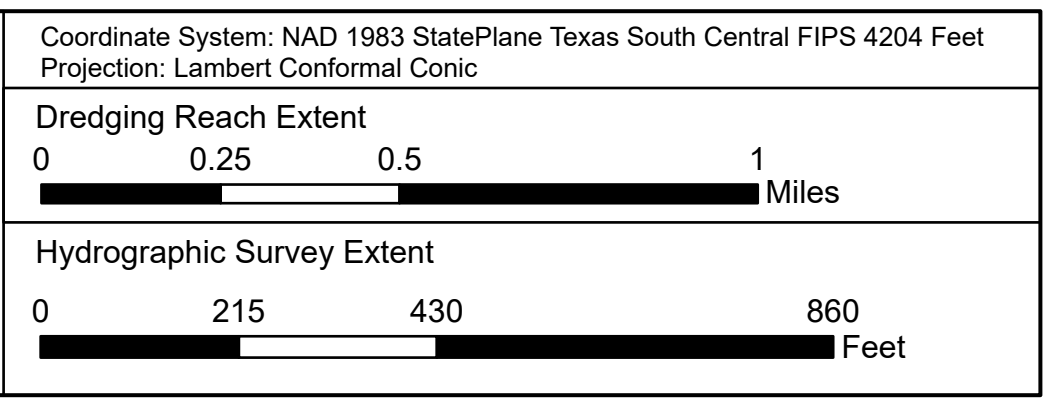
Authorized Depth: -46.5ft.	Latest Survey Collection Date: 04 March 2025
Width Range: 530ft to 600ft	Document Page: 4 of 5
Side Slope Ratio: 1:2.5 (Rise : Run)	Website Index Number: 28
PDF Print Date: 3/12/2025	Scale: 1:2,500
	Mapped by: M3AOXPAC
	Additional Imagery info:



<b>Channel Features</b>	<b>Aids to Navigation</b>	<b>MLLW</b>
--- Channel Center Line	Green Side Aids	30 - 35
— Channel Toe	Red Side Aids	35 - 40
↔ Channel Dimensions	Lights	40 - 42
		42 - 44
		44 - 46
		46 - 48
		48 - 50
		> 50

**NOTES:**  
 1. Horizontal coordinates are referenced to Texas State Plane Coordinate System, South Central Zone NAD83 US Survey Feet.  
 2. Elevations are referenced to Mean Lower Low Water (MLLW) datum.  
 3. This project was designed by the Galveston District of the U.S. Army Corps of Engineers. The initials and signatures and registration designations of individuals appear on these project documents within the scope of their employment as required by er1110-1-8132.  
 4. The information depicted on this survey map represents the results of surveys made on the dates indicated and can only be considered as indicating the general conditions existing at that time. These conditions are subject to rapid change due to shoaling events. A prudent mariner should not rely exclusively on the information provided here. Required by 33 CFR 209.325.  
 5. For the most up to date information please check our website at: <http://www.svg.usace.army.mil/Missions/Navigation/HydrographicSurveys/>  
 Service Layer Credits: World Topographic Map: City of Houston, HPB, Texas Parks & Wildlife, Esri, HERE, Garmin, INCREMENT P, USGS, METINASA, NGA, EPA, USDA  
 World Imagery: Maxar  
 World Ocean Base: Esri, GEBCO, Garmin, NaturalVue

Additional Combined Survey Dates and Stationing:  
 COMB\_SURV\_INFO\_HERE



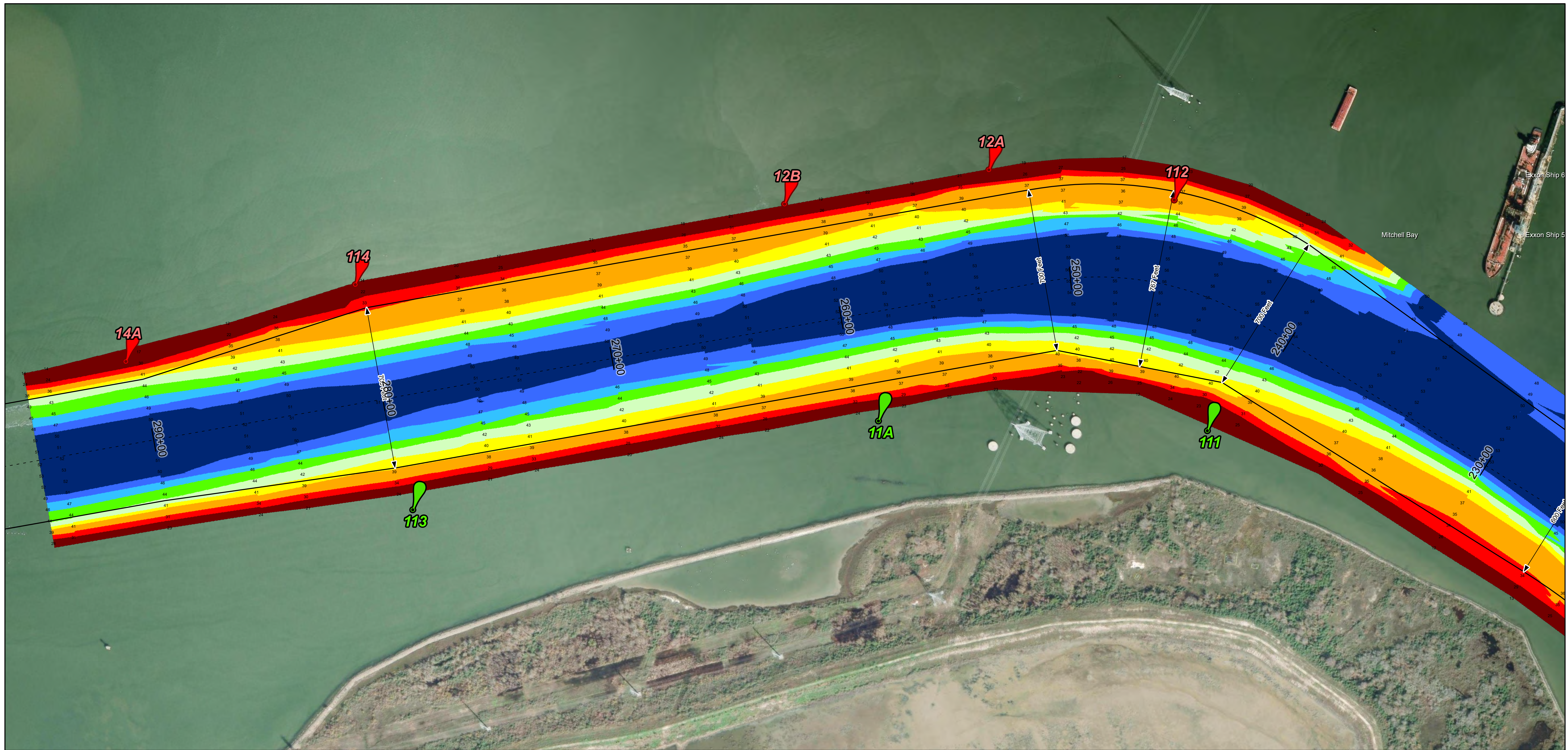
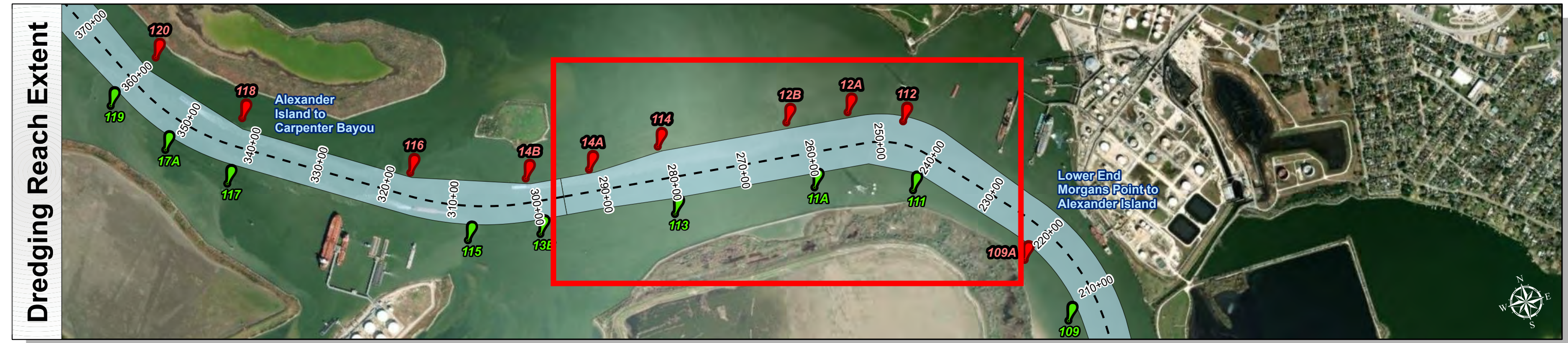
**HYDROGRAPHIC SURVEY**  
 U.S. ARMY ENGINEER DISTRICT  
 CORPS OF ENGINEERS  
 GALVESTON, TEXAS  
**HOUSTON**  
 Station: 0+000 to 295+00  
 Lower End Morgans Point to Alexander Island



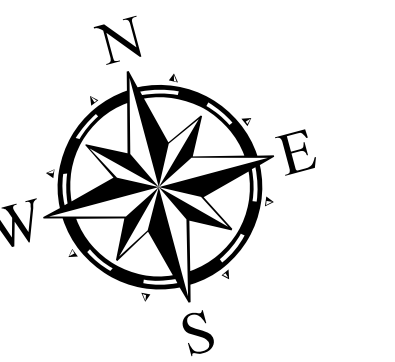
# Houston Ship Channel: Lower End Morgans Point to Alexander Island



U.S. Army Corps of Engineers  
Galveston District



Latest Survey Collection Date: 04 March 2025	Authorized Depth: -46.5ft.
Document Page: 5 of 5	Width Range: 530ft to 600ft
Scale: 1:2,500	Side Slope Ratio: 1:2.5 (Rise : Run)
Mapped by: M3AOXPAC	PDF Print Date: 3/12/2025
Additional Imagery info:	



Channel Features	Aids to Navigation	MLLW
<ul style="list-style-type: none"> <li>Channel Center Line</li> <li>Channel Toe</li> <li>Channel Dimensions</li> </ul>	<ul style="list-style-type: none"> <li>Green Side Aids</li> <li>Red Side Aids</li> <li>Lights</li> </ul>	

NOTES:  
 1. Horizontal coordinates are referenced to Texas State Plane Coordinate System, South Central Zone NAD83 US Survey Feet.  
 2. Elevations are referenced to Mean Lower Low Water (MLLW) datum.  
 3. This project was designed by the Galveston District of the U.S. Army Corps of Engineers. The initials and signatures and registration designations of individuals appear on these project documents within the scope of their employment as required by er1110-1, 8132.  
 4. The information depicted on this survey map represents the results of surveys made on the dates indicated and can only be considered as indicating the general conditions existing at that time. These conditions are subject to rapid change due to shoaling events. A prudent mariner should not rely exclusively on the information provided here. Required by 33 CFR 209.325.  
 5. For the most up to date information please check our website at: <http://www.svg.usace.army.mil/Missions/Navigation/HydrographicSurveys/>  
 Service Layer Credits: World Topographic Map: City of Houston, HPB, Texas Parks & Wildlife, Esri, HERE, Garmin, INCREMENT P, USGS, METINASA, NGA, EPA, USDA  
 World Imagery: Maxar  
 World Ocean Base: Esri, GEBCO, Garmin, NaturalVue

Additional Combined Survey Dates and Stationing: COMB_SURV_INFO_HERE	Coordinate System: NAD 1983 StatePlane Texas South Central FIPS 4204 Feet Projection: Lambert Conformal Conic
Dredging Reach Extent 0 0.25 0.5 1 Miles	Hydrographic Survey Extent 0 215 430 860 Feet

**HYDROGRAPHIC SURVEY**  
 U.S. ARMY ENGINEER DISTRICT  
 CORPS OF ENGINEERS  
 GALVESTON, TEXAS  
**Station: 0+000 to 295+00**  
**HOUSTON**  
 Lower End Morgans Point to Alexander Island