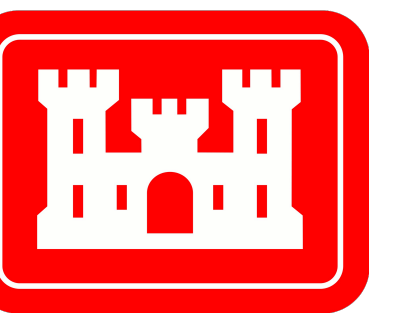
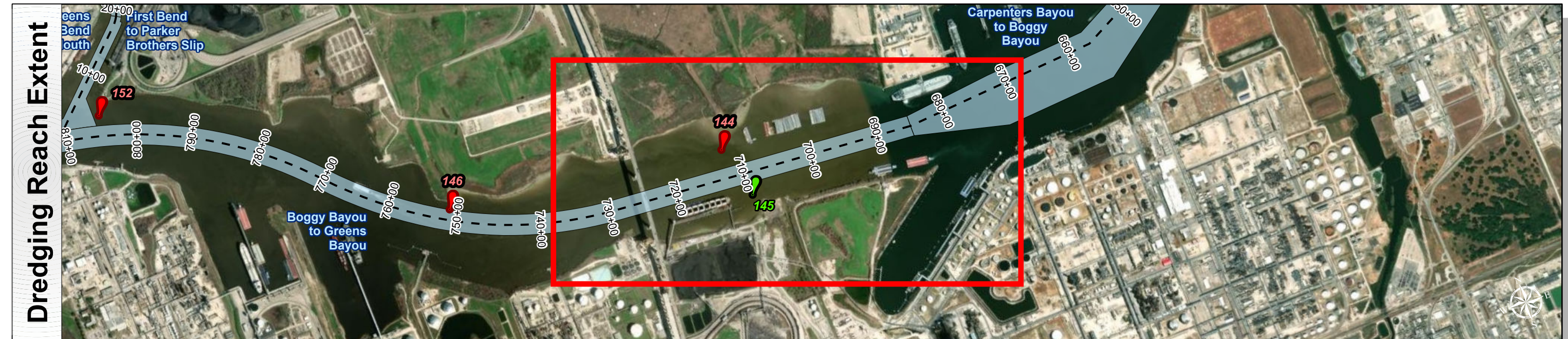
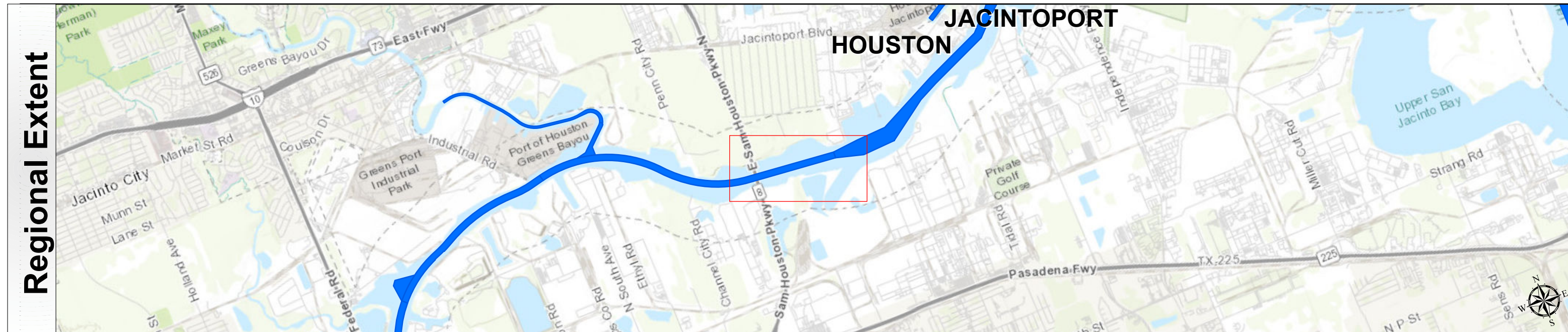
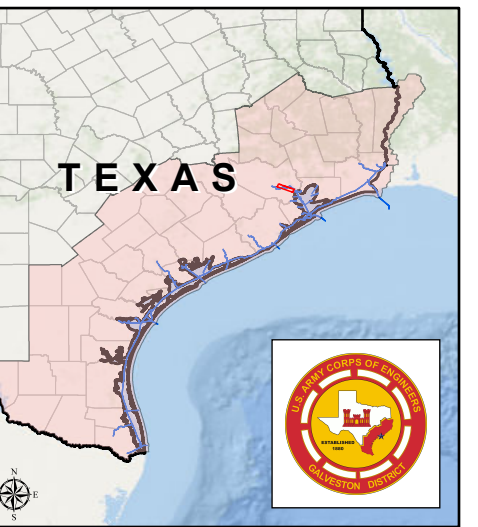


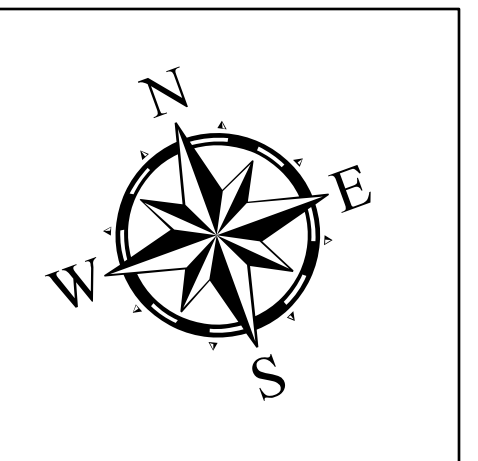
Houston Ship Channel: Boggy Bayou to Greens Bayou



U.S. Army Corps of Engineers
Galveston District



Latest Survey Collection Date: 07 March 2025	Authorized Depth: -41.5ft.
Document Page: 1 of 3	Side Slope Ratio: 1:2.5 (Rise :Run)
Scale: 1:2,500	PDF Print Date: 4/3/2025
Mapped by: m3odnbdg	
Additional Imagery info:	



Channel Features	Aids to Navigation	MLLW
--- Channel Center Line	Green Side Aids	≤ 25
— Channel Toe	Red Side Aids	25 - 30
↔ Channel Dimensions	Lights	30 - 35
		35 - 37
		37 - 39
		39 - 41
		41 - 43
		43 - 45
		> 45

NOTES:

- Horizontal coordinates are referenced to Texas State Plane Coordinate System, South Central Zone NAD83 US Survey Feet.
- Elevations are referenced to Mean Lower Low Water (MLLW) datum.
- This project was designed by the Galveston District of the U.S. Army Corps of Engineers. The initials and signatures and registration designations of individuals appear on these project documents within the scope of their employment as required by 47CFR 117.113-1, 117.113-2.
- The information depicted on this survey map represents the results of surveys made on the dates indicated and can only be considered as indicating the general conditions existing at that time. These conditions are subject to rapid change due to shoaling events. A prudent mariner should not rely exclusively on the information provided here. Required by 33 CFR 209.225.
- For the most up to date information please check our website at: <http://www.usace.army.mil/Missions/Navigation/HydrographicSurveys/>

Service Layer Credits: World Topographic Map: City of Houston, HPB, Texas Parks & Wildlife, Esri, HERE, Garmin, INCREMENT P, USGS, METINASA, NGA, EPA, USDA
World Imagery: Maxar
World Ocean Base: Esri, GEBCO, Garmin, NaturalVue

Additional Combined Survey Dates and Stationing:
Combined survey dates 20250307_684P03_700P00; 20250306_700P00_833P05

Coordinate System: NAD 1983 StatePlane Texas South Central FIPS 4204 Feet
Projection: Lambert Conformal Conic

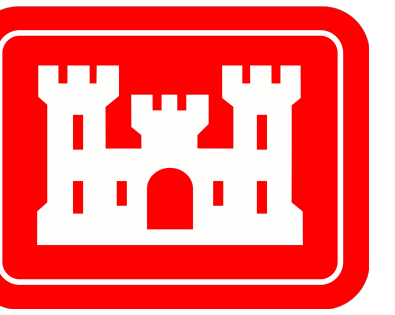
Dredging Reach Extent
0 0.25 0.5 1 Miles

Hydrographic Survey Extent
0 215 430 860 Feet

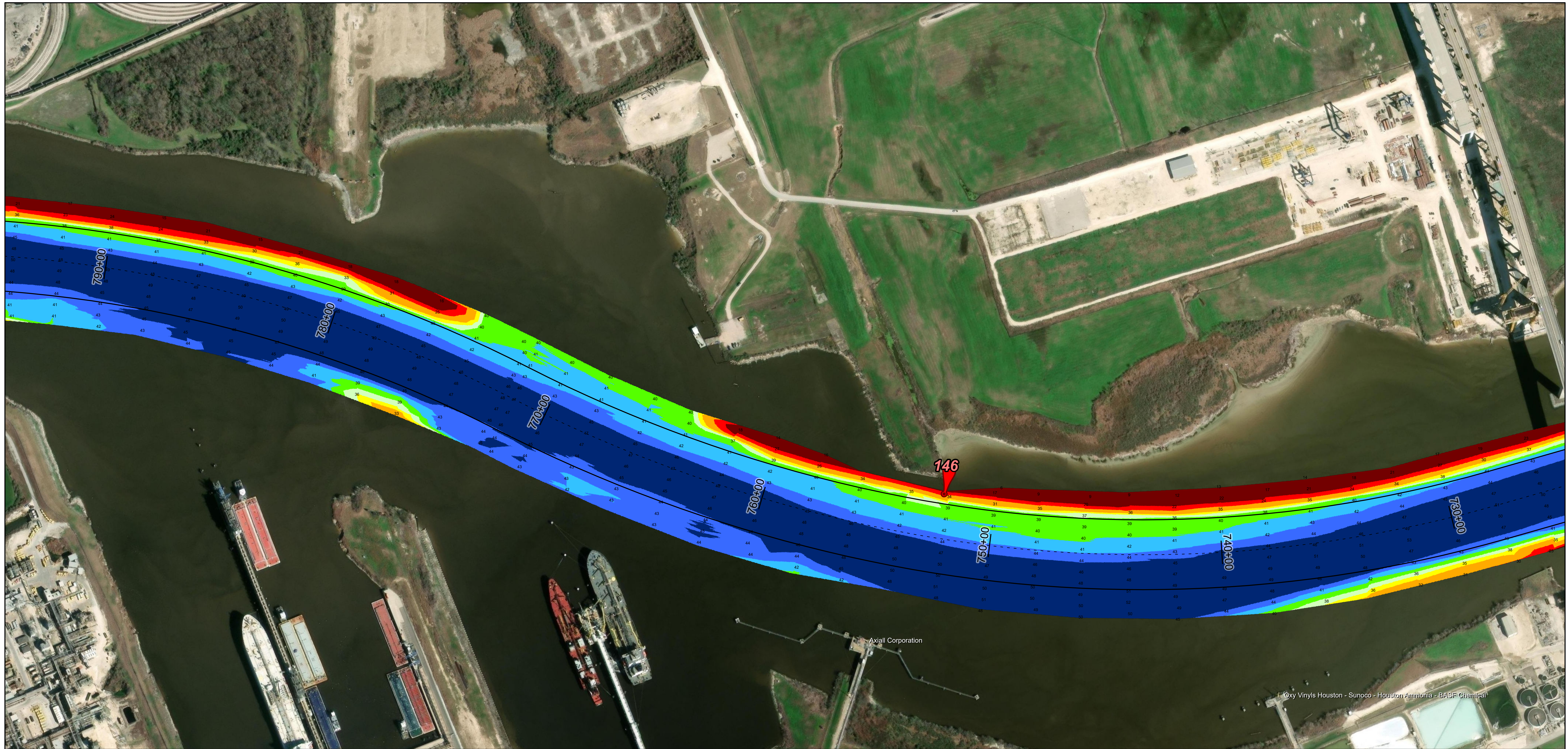
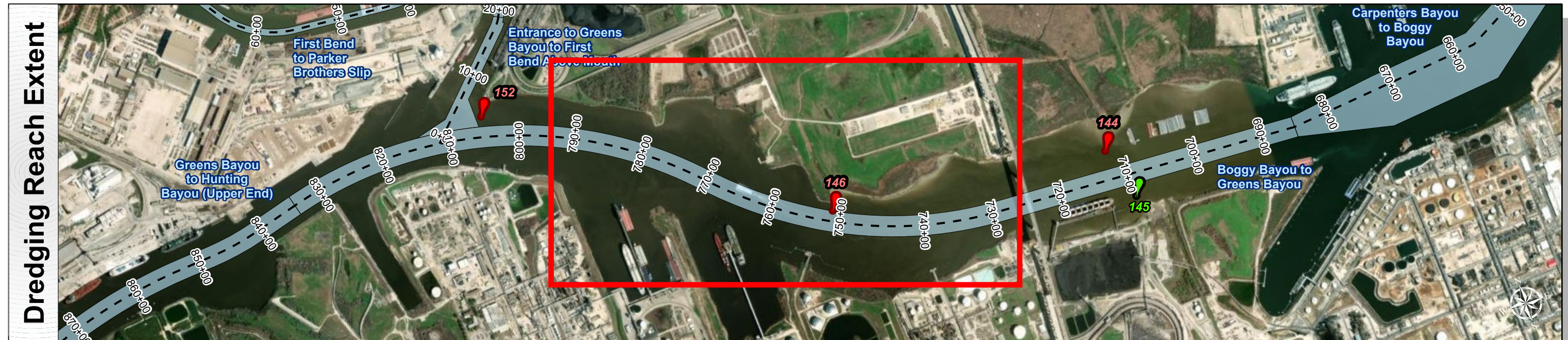
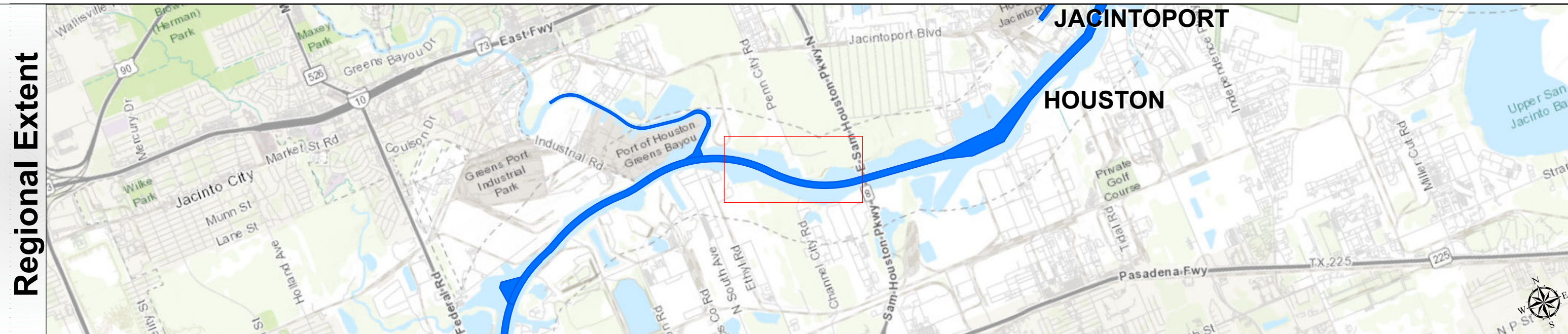
HYDROGRAPHIC SURVEY
U.S. ARMY ENGINEER DISTRICT
CORPS OF ENGINEERS
GALVESTON, TEXAS

Station: 684+03.19 to 833+05.17
HOUSTON
Boggy Bayou to Greens Bayou

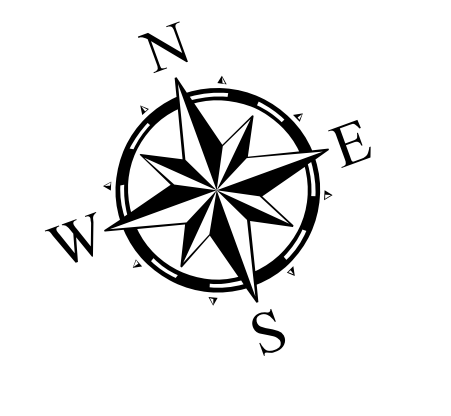
Houston Ship Channel: Boggy Bayou to Greens Bayou



U.S. Army Corps of Engineers
Galveston District



Latest Survey Collection Date: 07 March 2025	Authorized Depth: -41.5ft.
Document Page: 2 of 3	Side Slope Ratio: 1:2.5 (Rise :Run)
Scale: 1:2,500	PDF Print Date: 4/3/2025
Mapped by: m3odnbdg	
Additional Imagery info:	



Channel Features	Aids to Navigation	MLLW
--- Channel Center Line	Green Side Aids	≤ 25
— Channel Toe	Red Side Aids	25 - 30
↔ Channel Dimensions	Lights	30 - 35
		35 - 37
		37 - 39
		39 - 41
		41 - 43
		43 - 45
		> 45

NOTES:

- Horizontal coordinates are referenced to Texas State Plane Coordinate System, South Central Zone NAD83 US Survey Feet.
- Elevations are referenced to Mean Lower Low Water (MLLW) datum.
- This project was designed by the Galveston District of the U.S. Army Corps of Engineers. The initials and signatures and registration designations of individuals appear on these project documents within the scope of their employment as required by 47CFR 117.111-1, §117.112.
- The information depicted on this survey map represents the results of surveys made on the dates indicated and can only be considered as indicating the general conditions existing at that time. These conditions are subject to rapid change due to shoaling events. A prudent mariner should not rely exclusively on the information provided here. Required by 33 CFR 209.225.
- For the most up to date information please check our website at: <http://www.usace.army.mil/Missions/Navigation/HydrographicSurveys/>

Service Layer Credits: World Topographic Map: City of Houston, HPB, Texas Parks & Wildlife, Esri, HERE, Garmin, INCREMENT P, USGS, METINASA, NGA, EPA, USDA
World Imagery: Maxar
World Ocean Base: Esri, GEBCO, Garmin, NaturalVue

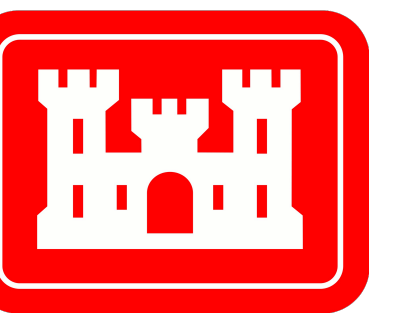
Additional Combined Survey Dates and Stationing:
Combined survey dates 20250307_684P03_700P00; 20250306_700P00_833P05

Coordinate System: NAD 1983 StatePlane Texas South Central FIPS 4204 Feet Projection: Lambert Conformal Conic	
Dredging Reach Extent	
0	0.25 0.5 1 Miles
Hydrographic Survey Extent	
0	215 430 860 Feet

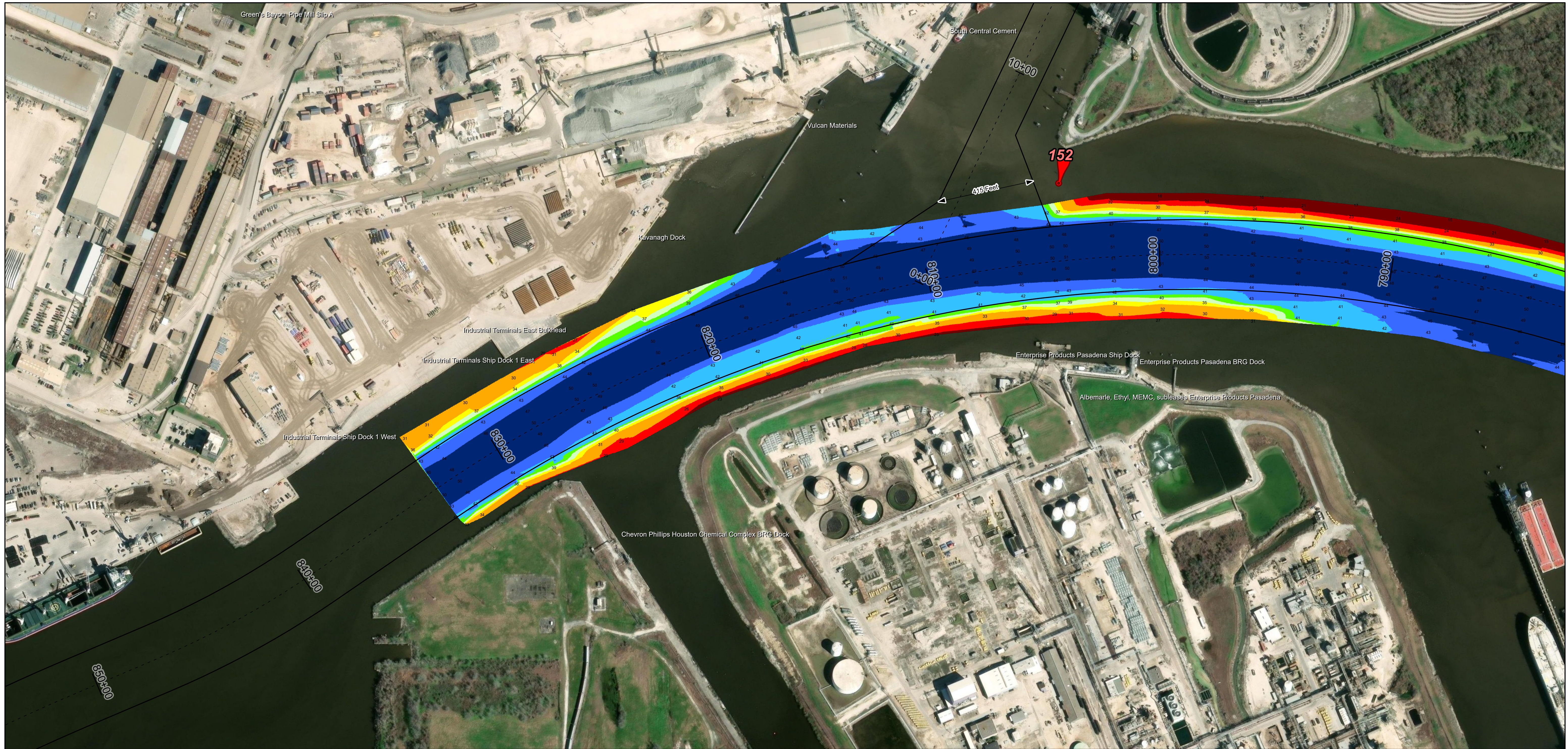
HYDROGRAPHIC SURVEY
U.S. ARMY ENGINEER DISTRICT
CORPS OF ENGINEERS
GALVESTON, TEXAS

Station: 684+03.19 to 833+05.17
HOUSTON
Boggy Bayou to Greens Bayou

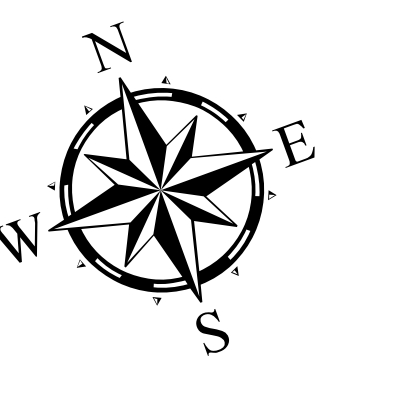
Houston Ship Channel: Boggy Bayou to Greens Bayou



U.S. Army Corps of Engineers
Galveston District



Latest Survey Collection Date: 07 March 2025	Authorized Depth: -41.5ft.
Document Page: 3 of 3	Side Slope Ratio: 1:2.5 (Rise :Run)
Scale: 1:2,500	Website Index Number: 40
Mapped by: m3odnbdg	PDF Print Date: 4/3/2025
Additional Imagery info:	



Channel Features

- Channel Center Line
- Channel Toe
- Channel Dimensions

Aids to Navigation

- Green Side Aids
- Red Side Aids
- Lights

MLLW

≤ 25
25 - 30
30 - 35
35 - 37
37 - 39
39 - 41
41 - 43
43 - 45
> 45

NOTES:

- Horizontal coordinates are referenced to Texas State Plane Coordinate System, South Central Zone NAD83 US Survey Feet.
- Elevations are referenced to Mean Lower Low Water (MLLW) datum.
- This project was designed by the Galveston District of the U.S. Army Corps of Engineers. The initials and signatures and registration designations of individuals appear on these project documents within the scope of their employment as required by 47CFR 117.113-1, §117.113-2.
- The information depicted on this survey map represents the results of surveys made on the dates indicated and can only be considered as indicating the general conditions existing at that time. These conditions are subject to rapid change due to shoaling events. A prudent mariner should not rely exclusively on the information provided here. Required by 33 CFR 209.325.
- For the most up to date information please check our website at: <http://www.svg.usace.army.mil/Missions/Navigation/HydrographicSurveys/>

Service Layer Credits: World Topographic Map: City of Houston, HPB, Texas Parks & Wildlife, Esri, HERE, Garmin, INCREMENT P, USGS, METI/NASA, NGA, EPA, USDA, World Imagery, Maxar, World Ocean Base: Esri, GEBCO, Garmin, NaturalVue

Additional Combined Survey Dates and Stationing:
Combined survey dates 20250307_684P03_700P00; 20250306_700P00_833P05

Dredging Reach Extent

0 0.25 0.5 1 Miles

Hydrographic Survey Extent

0 215 430 860 Feet

Coordinate System: NAD 1983 StatePlane Texas South Central FIPS 4204 Feet
Projection: Lambert Conformal Conic

HYDROGRAPHIC SURVEY
U.S. ARMY ENGINEER DISTRICT
CORPS OF ENGINEERS
GALVESTON, TEXAS

Station: 684+03.19 to 833+05.17
HOUSTON
Boggy Bayou to Greens Bayou