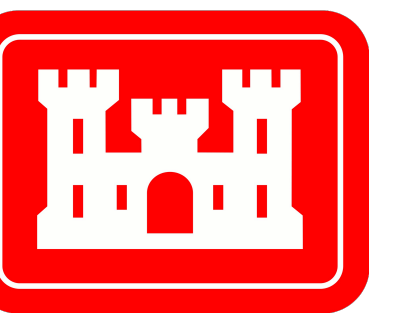
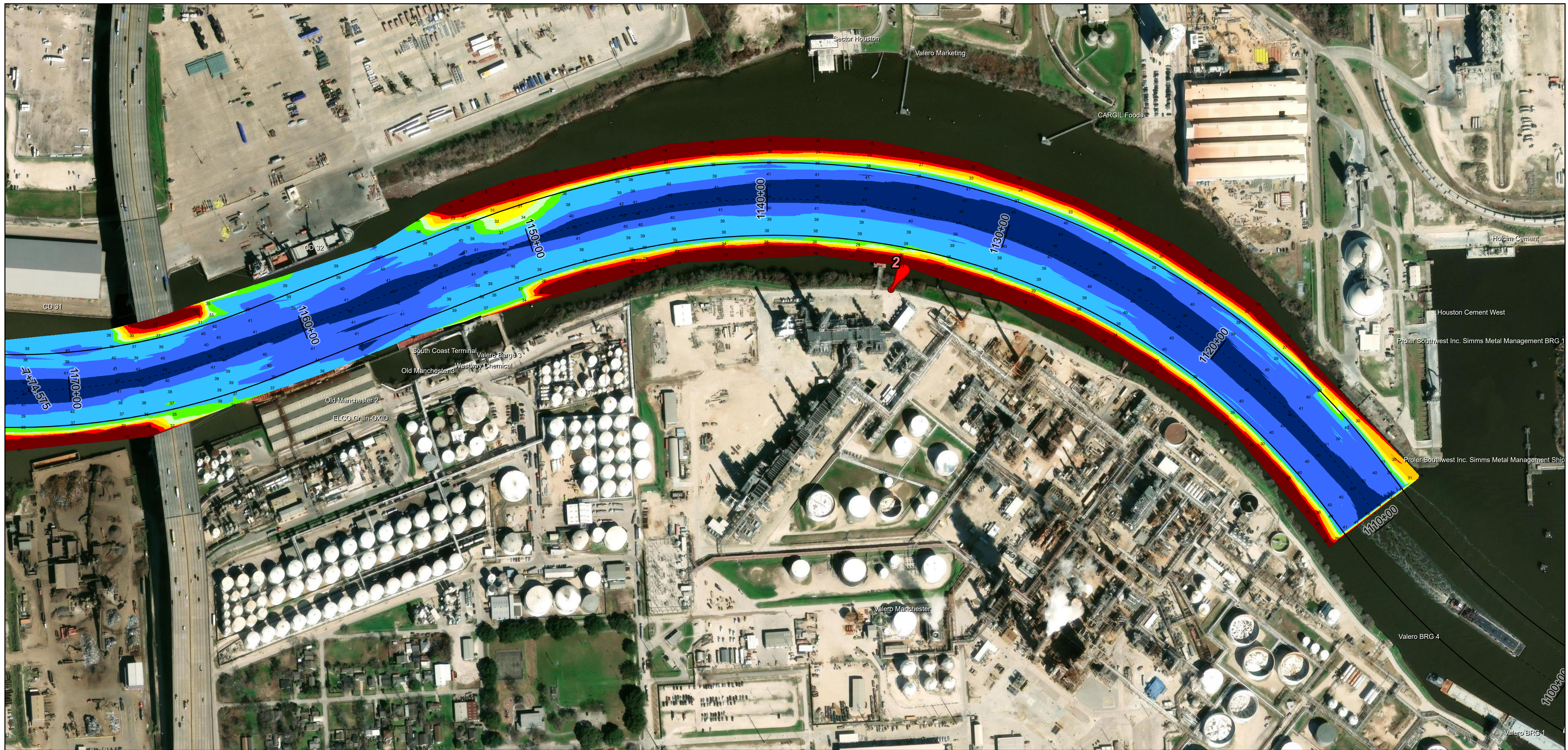
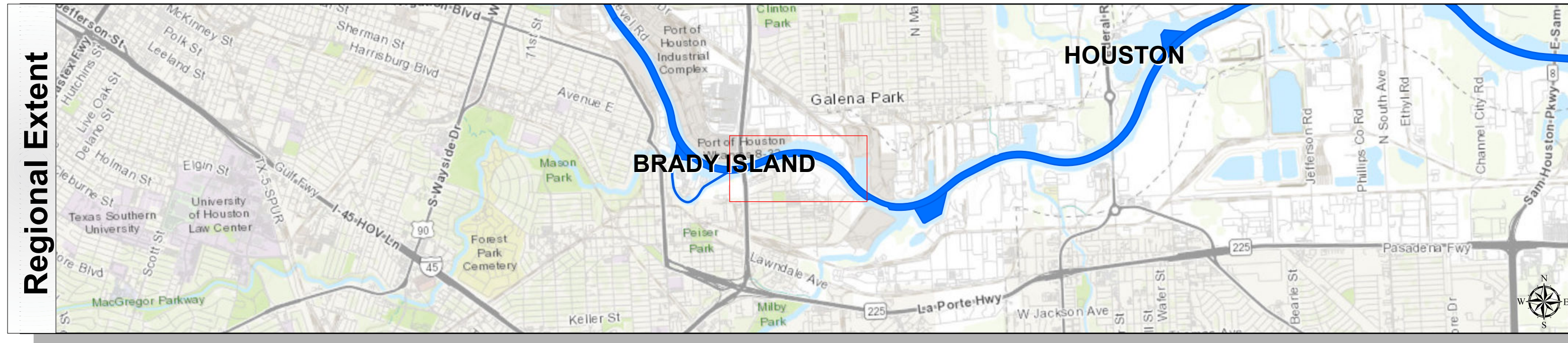


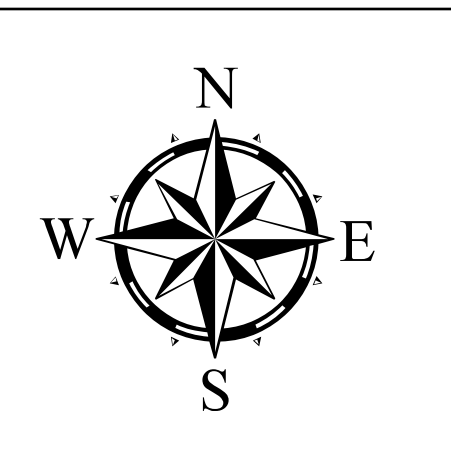
# Houston Ship Channel: Sims Bayou to Houston Ship Channel Turning Basin



U.S. Army Corps of Engineers  
Galveston District



Latest Survey Collection Date: 04 March 2025	Authorized Depth: -37.5ft.
Document Page: 1 of 3	Side Slope Ratio: 1:2.5 (Rise :Run)
Scale: 1:2,400	Website Index Number: 46
Mapped by: m3odnbdg	PDF Print Date: 4/7/2025
Additional Imagery info:	



<b>Channel Features</b>	<b>Aids to Navigation</b>	<b>MLLW</b>
--- Channel Center Line	Green Side Aids	≤ 25
— Channel Toe	Red Side Aids	25 - 28
↔ Channel Dimensions	Lights	28 - 31
		31 - 33
		33 - 35
		35 - 37
		37 - 40
		40 - 42
		> 42

**NOTES:**

- Horizontal coordinates are referenced to Texas State Plane Coordinate System, South Central Zone NAD83 US Survey Feet.
- Elevations are referenced to Mean Lower Low Water (MLLW) datum.
- This project was designed by the Galveston District of the U.S. Army Corps of Engineers. The initials and signatures and registration designations of individuals appear on these project documents within the scope of their employment as required by 47CFR 117.1-1.132.
- The information depicted on this survey map represents the results of surveys made on the dates indicated and can only be considered as indicating the general conditions existing at that time. These conditions are subject to rapid change due to shoaling events. A prudent mariner should not rely exclusively on the information provided here. Required by 33 CFR 206.225.
- For the most up to date information please check our website at: <http://www.usace.army.mil/Missions/Navigation/HydrographicSurveys/>

Service Layer Credits: World Imagery, Source: Esri, Maxar, Earthstar Geographics, and the GIS User Community  
World Imagery, Maxar, Microsoft  
World Topographic Map: City of Houston, HPB, Texas Parks & Wildlife, Esri, HERE, Garmin, INCREMENT P, USGS, METNUSA, NGA, EPA, USA, World Ocean Base, Esri, GEBCO, Garmin, NaturalVue

**Additional Combined Survey Dates and Stationing:**  
Combined survey dates 20250304\_PR\_1110P77\_1244P00; 20241219\_CS\_1244P00\_1266P50

**Dredging Reach Extent**  
0 0.25 0.5 1 Miles

**Hydrographic Survey Extent**  
0 205 410 820 Feet

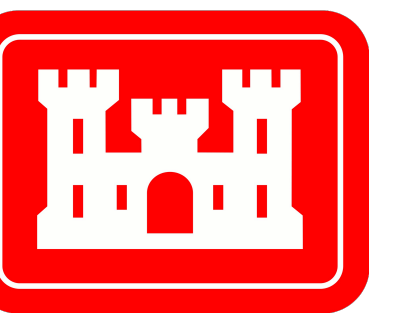
**Coordinate System:** NAD 1983 StatePlane Texas South Central FIPS 4204 Feet  
Projection: Lambert Conformal Conic

**HYDROGRAPHIC SURVEY**  
U.S. ARMY ENGINEER DISTRICT  
CORPS OF ENGINEERS  
GALVESTON, TEXAS

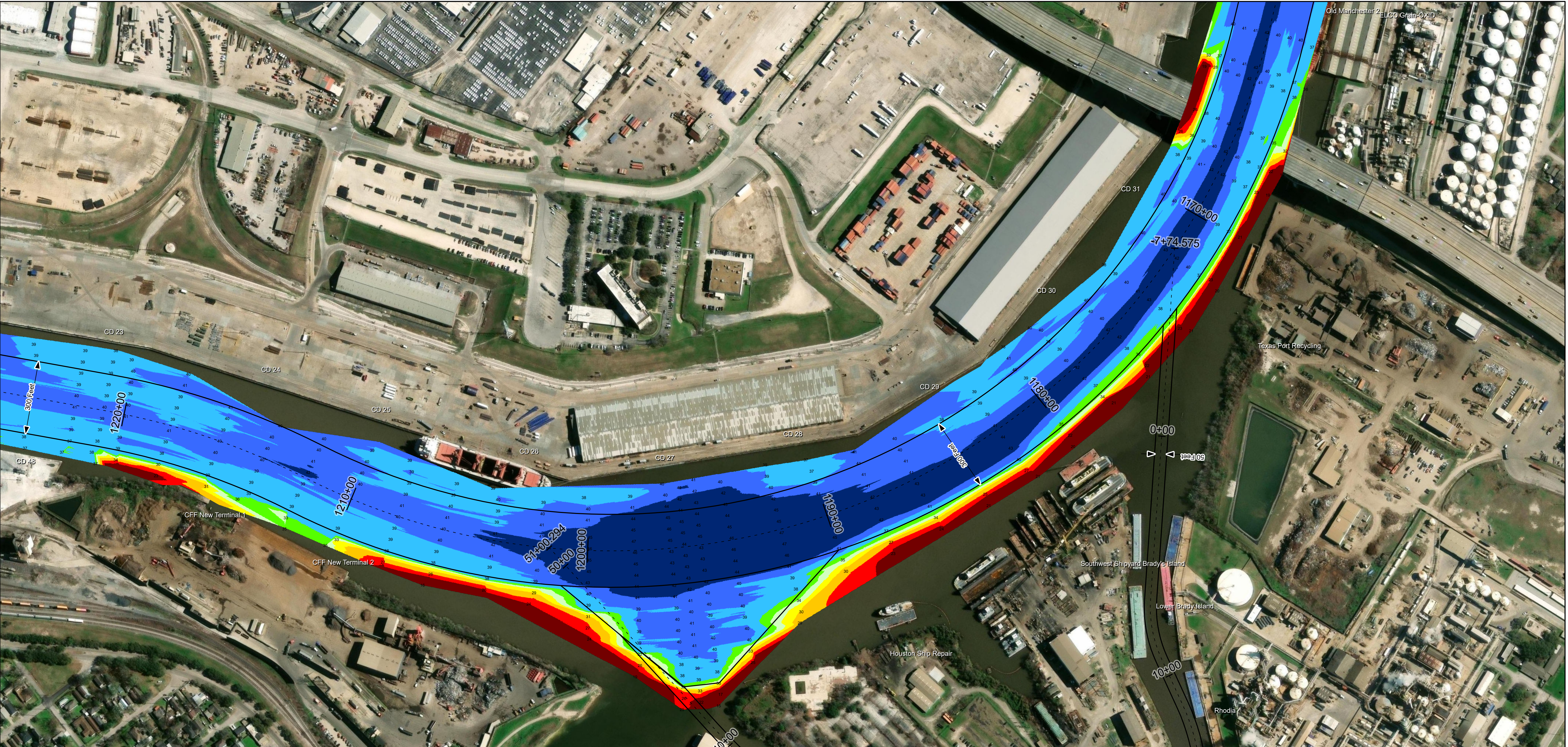
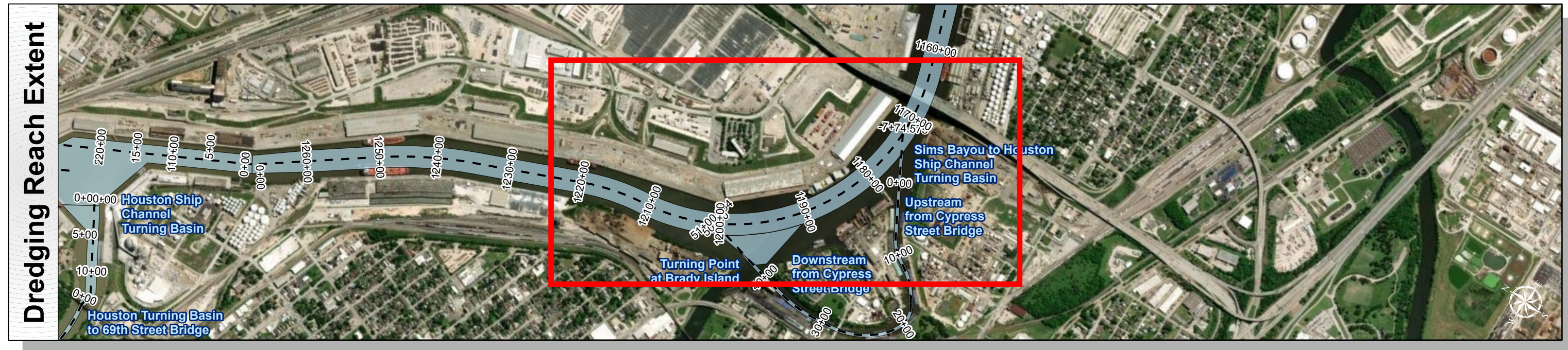
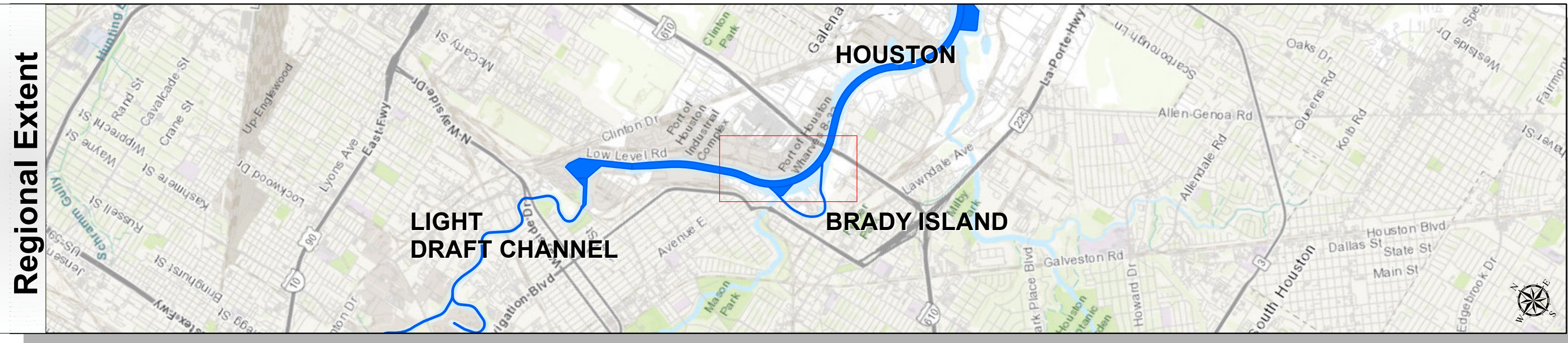
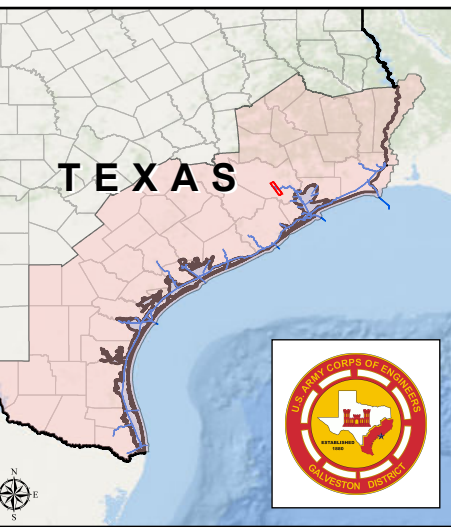
**Station: 1110+77.54 to 1266+48.72**  
HOUSTON  
Sims Bayou to Houston Ship Channel Turning Basin



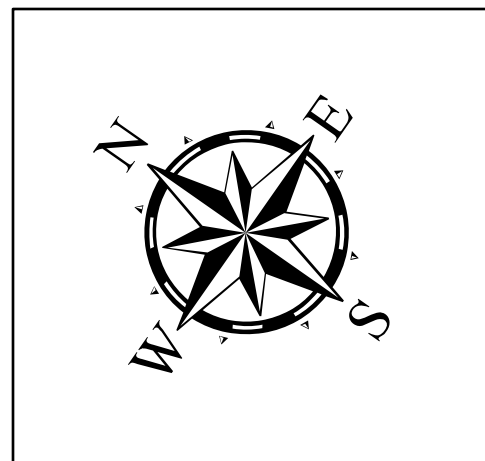
# Houston Ship Channel: Sims Bayou to Houston Ship Channel Turning Basin



U.S. Army Corps of Engineers  
Galveston District



Latest Survey Collection Date: 04 March 2025	Authorized Depth: -37.5ft.
Document Page: 2 of 3	Side Slope Ratio: 1:2.5 (Rise :Run)
Scale: 1:2,400	Website Index Number: 47
Mapped by: m3odnbdg	PDF Print Date: 4/7/2025
Additional Imagery info:	



**Channel Features**

- Channel Center Line
- Channel Toe
- Channel Dimensions

**Aids to Navigation**

- Green Side Aids
- Red Side Aids
- Lights

**MLLW**

**NOTES:**

- Horizontal coordinates are referenced to Texas State Plane Coordinate System, South Central Zone NAD83 US Survey Feet.
- Elevations are referenced to Mean Lower Low Water (MLLW) datum.
- This project was designed by the Galveston District of the U.S. Army Corps of Engineers. The initials and signatures and registration designations of individuals appear on these project documents within the scope of their employment as required by 47CFR 111.011-41.132.
- The information depicted on this survey map represents the results of surveys made on the dates indicated and can only be considered as indicating the general conditions existing at that time. These conditions are subject to rapid change due to shoaling events. A prudent mariner should not rely exclusively on the information provided here. Required by 33 CFR 209.225.
- For the most up to date information please check our website at: <http://www.usace.army.mil/Missions/Navigation/HydrographicSurveys/>

Service Layer Credits: World Imagery, Source: Esri, Maxar, Earthstar Geographics, and the GIS User Community  
World Imagery: Maxar, Microsoft  
World Topographic Map: City of Houston, HPB, Texas Parks & Wildlife, Esri, HERE, Garmin, INCREMENT P, USGS, METNANASA, NGA, EPA, USA, World Ocean Base, Esri, GEBCO, Garmin, NaturalVue

**Additional Combined Survey Dates and Stationing:**  
Combined survey dates 20250304\_PR\_1110P77\_1244P00; 20241219\_CS\_1244P00\_1266P50

**Dredging Reach Extent**

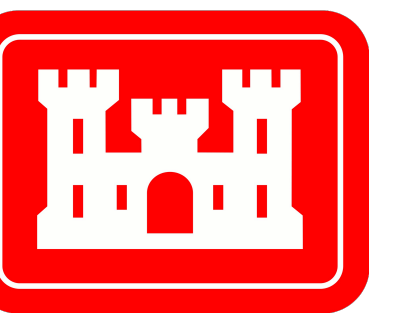
**Hydrographic Survey Extent**

**HYDROGRAPHIC SURVEY**  
U.S. ARMY ENGINEER DISTRICT  
CORPS OF ENGINEERS  
GALVESTON, TEXAS

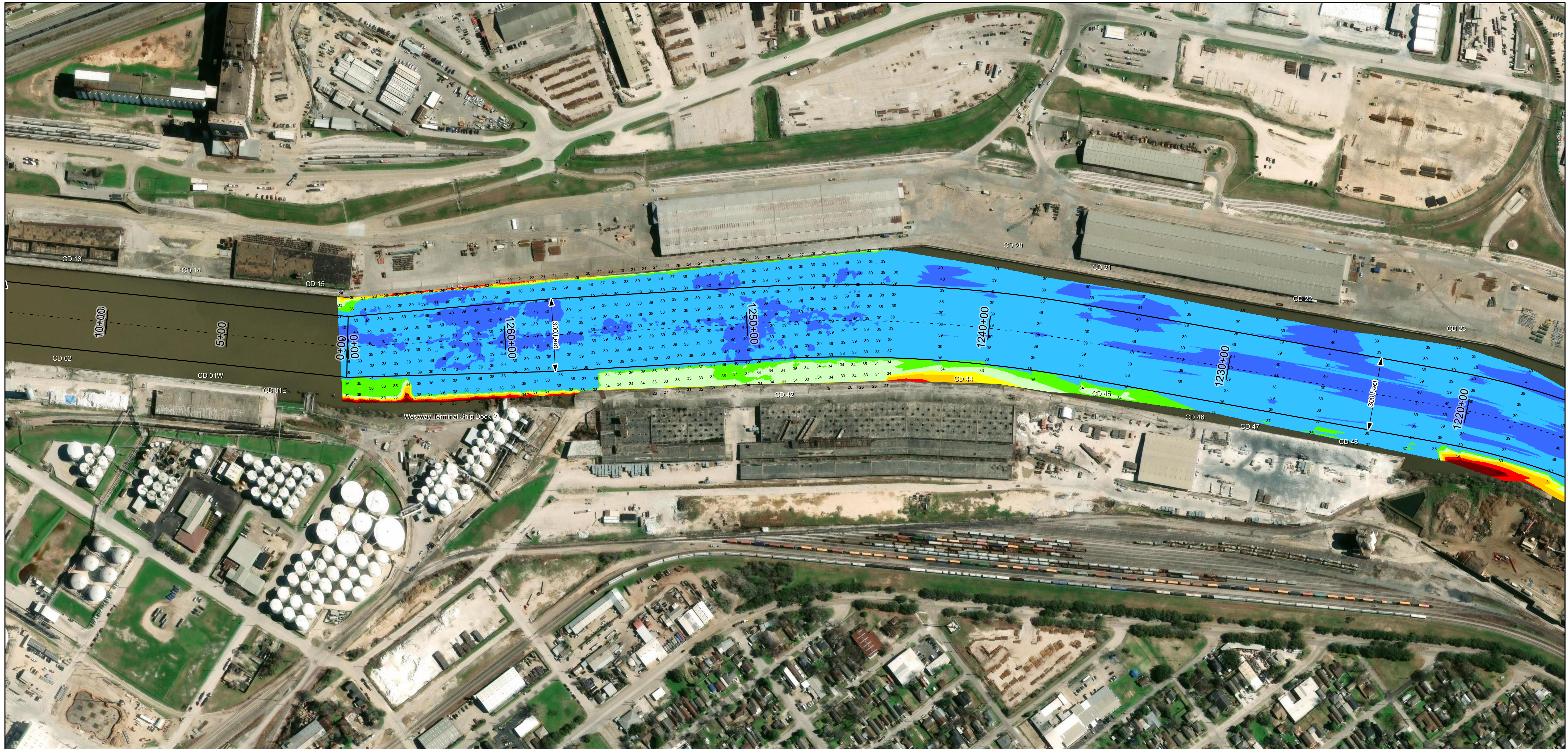
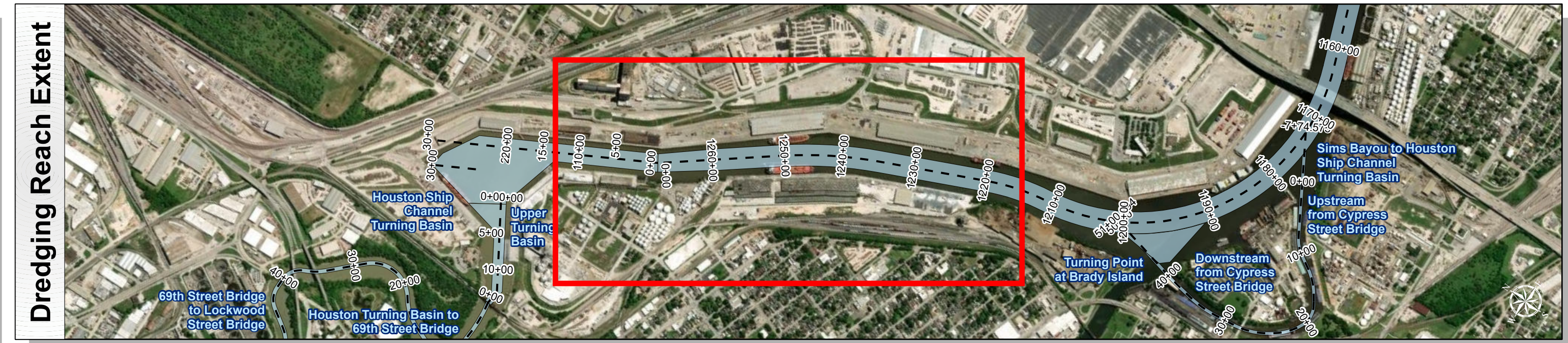
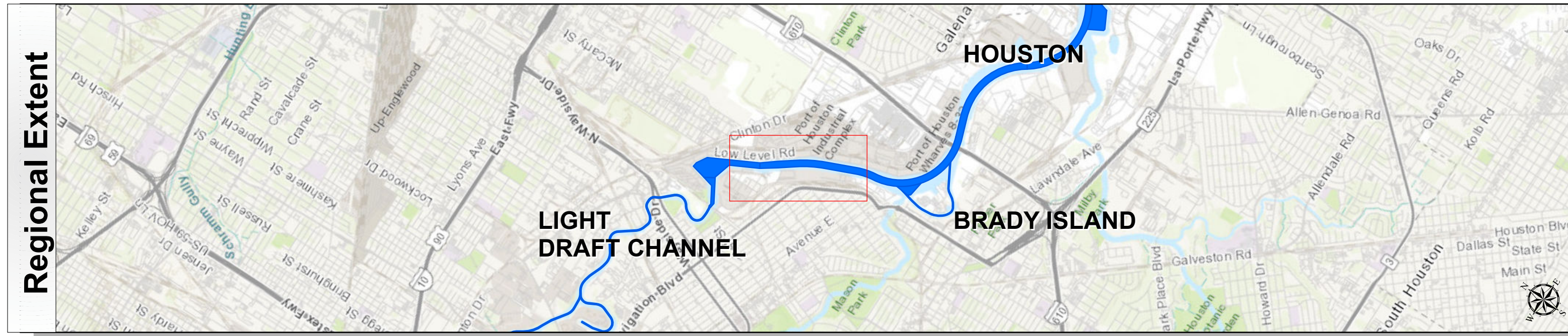
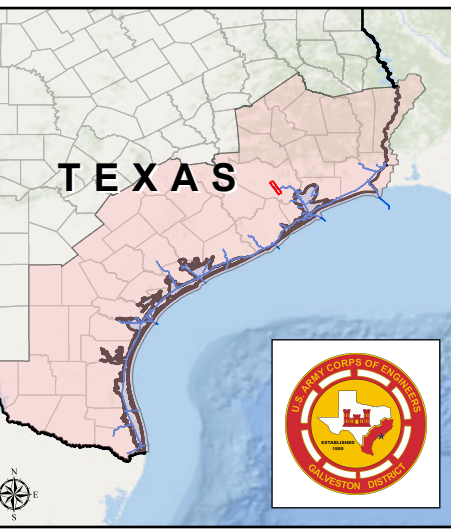
**Station: 1110+77.54 to 1266+48.72**  
Sims Bayou to Houston Ship Channel Turning Basin



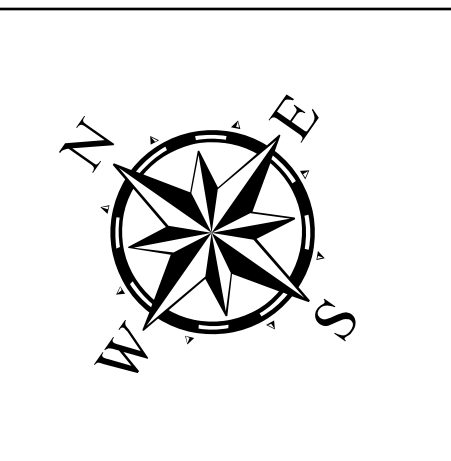
# Houston Ship Channel: Sims Bayou to Houston Ship Channel Turning Basin



U.S. Army Corps of Engineers  
Galveston District



Latest Survey Collection Date: 04 March 2025	Authorized Depth: -37.5ft.
Document Page: 3 of 3	Side Slope Ratio: 1:2.5 (Rise :Run)
Scale: 1:2,400	PDF Print Date: 4/7/2025
Mapped by: m3odnbdg	
Additional Imagery info:	
Website Index Number: 48	



**Channel Features**

- Channel Center Line
- Channel Toe
- Channel Dimensions

**Aids to Navigation**

- Green Side Aids
- Red Side Aids
- Lights

**MLLW**

**NOTES:**

- Horizontal coordinates are referenced to Texas State Plane Coordinate System, South Central Zone NAD83 US Survey Feet.
- Elevations are referenced to Mean Lower Low Water (MLLW) datum.
- This project was designed by the Galveston District of the U.S. Army Corps of Engineers. The initials and signatures and registration designations of individuals appear on these project documents within the scope of their employment as required by 47CFR 117.111-18.132.
- The information depicted on this survey map represents the results of surveys made on the dates indicated and can only be considered as indicating the general conditions existing at that time. These conditions are subject to rapid change due to shoaling events. A prudent mariner should not rely exclusively on the information provided here. Required by 33 CFR 209.225.
- For the most up to date information please check our website at: <http://www.svg.usace.army.mil/Missions/Navigation/HydrographicSurveys/>

Service Layer Credits: World Imagery: Source: Esri, Maxar, Earthstar Geographics, and the GIS User Community  
World Imagery: Maxar, Microsoft  
World Topographic Map: City of Houston, HPB, Texas Parks & Wildlife, Esri, HERE, Garmin, INCREMENT P, USGS, METINASA, NGA, EPA, USA, World Ocean Base: Esri, GEBCO, Garmin, NaturalVue

**Additional Combined Survey Dates and Stationing:**  
Combined survey dates 20250304\_PR\_1110P77\_1244P00; 20241219\_CS\_1244P00\_1266P50

**Dredging Reach Extent**

**Hydrographic Survey Extent**

Coordinate System: NAD 1983 StatePlane Texas South Central FIPS 4204 Feet  
Projection: Lambert Conformal Conic

**HYDROGRAPHIC SURVEY**  
U.S. ARMY ENGINEER DISTRICT  
CORPS OF ENGINEERS  
GALVESTON, TEXAS

**Station: 1110+77.54 to 1266+48.72**  
**HOUSTON**  
Sims Bayou to Houston Ship Channel Turning Basin