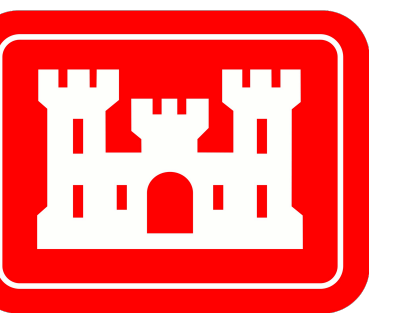
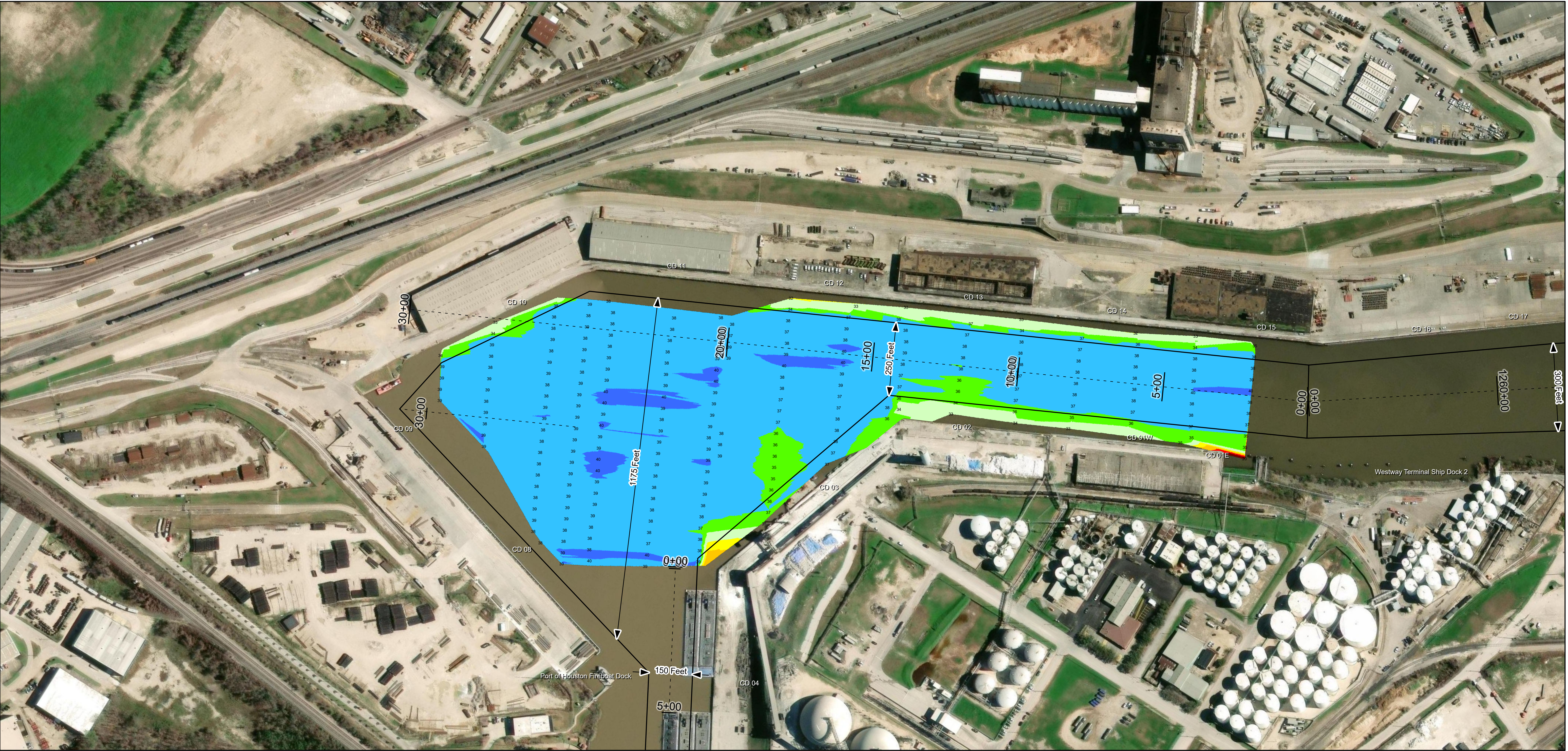


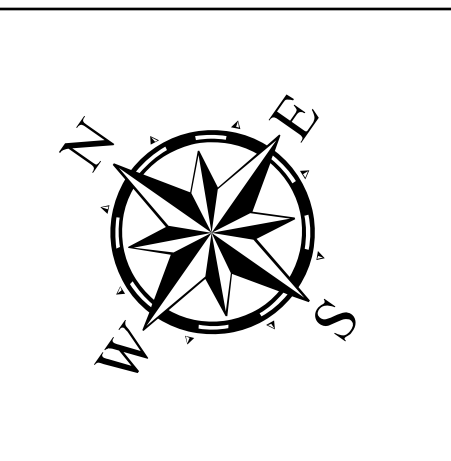
Houston Ship Channel: Houston Ship Channel Turning Basin



U.S. Army Corps of Engineers
Galveston District



Latest Survey Collection Date: 16 January 2025	Authorized Depth: -37.5ft.
Document Page: 1 of 1	Side Slope Ratio: 1:2.5 (Rise :Run)
Scale: 1:2,000	PDF Print Date: 4/18/2025
Mapped by: m3odnbdg	
Additional Imagery info:	

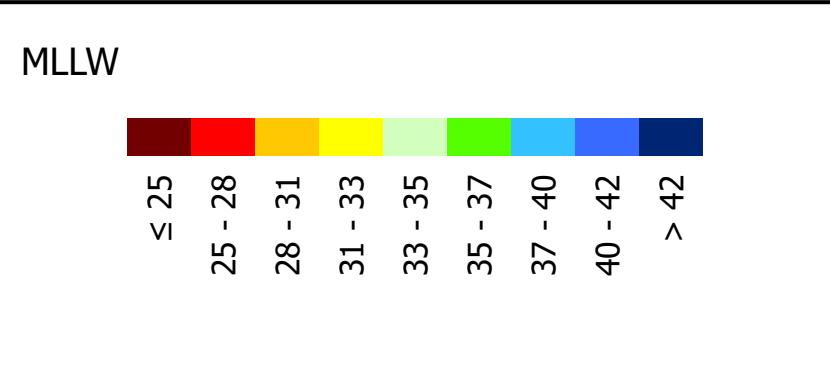


Channel Features

- Channel Center Line
- Channel Toe
- Channel Dimensions

Aids to Navigation

- Green Side Aids
- Red Side Aids
- Lights

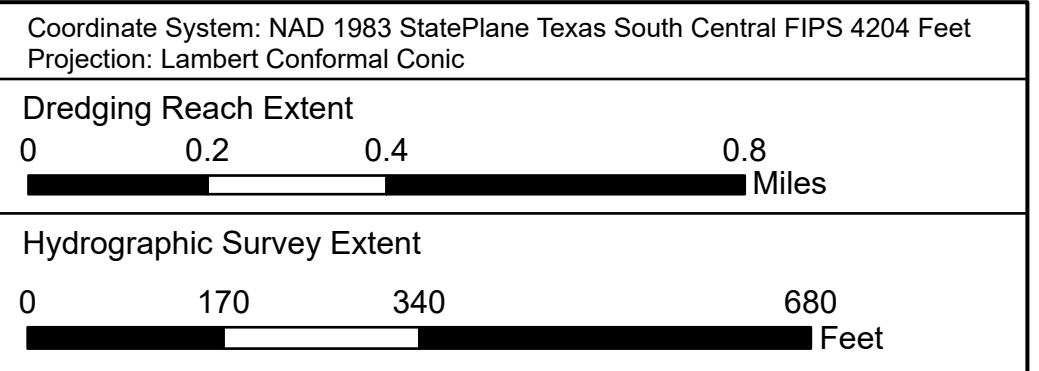


NOTES:

- Horizontal coordinates are referenced to Texas State Plane Coordinate System, South Central Zone NAD83 US Survey Feet.
- Elevations are referenced to Mean Lower Low Water (MLLW) datum.
- This project was designed by the Galveston District of the U.S. Army Corps of Engineers. The initials and signatures and registration designations of individuals appear on these project documents within the scope of their employment as required by er1110-1-g132.
- The information depicted on this survey map represents the results of surveys made on the dates indicated and can only be considered as indicating the general conditions existing at that time. These conditions are subject to rapid change due to shoaling events. A prudent mariner should not rely exclusively on the information provided here. Required by 33 CFR 209.225
- For the most up to date information please check our website at: <http://www.svg.usace.army.mil/Missions/Navigation/HydrographicSurveys/>

Service Layer Credits: World Imagery, Source: Esri, Maxar, Earthstar Geographics, and the GIS User Community
World Imagery, Maxar, Microsoft
World Topographic Map: City of Houston, HPB, Texas Parks & Wildlife, Esri, HERE, Garmin, INCREMENT P, USGS, METNANAS, NGA, EPA, USDA, World Ocean Base, Esri, GEBCO, Garmin, NaturalVue

Additional Combined Survey Dates and Stationing:
COMB_SURV_INFO_HERE



HYDROGRAPHIC SURVEY
U.S. ARMY ENGINEER DISTRICT
CORPS OF ENGINEERS
GALVESTON, TEXAS

Station: 0+00 to 30+95.05
HOUSTON
Houston Ship Channel Turning Basin