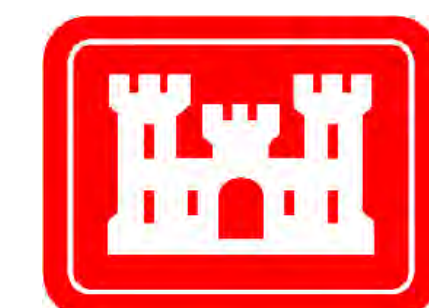
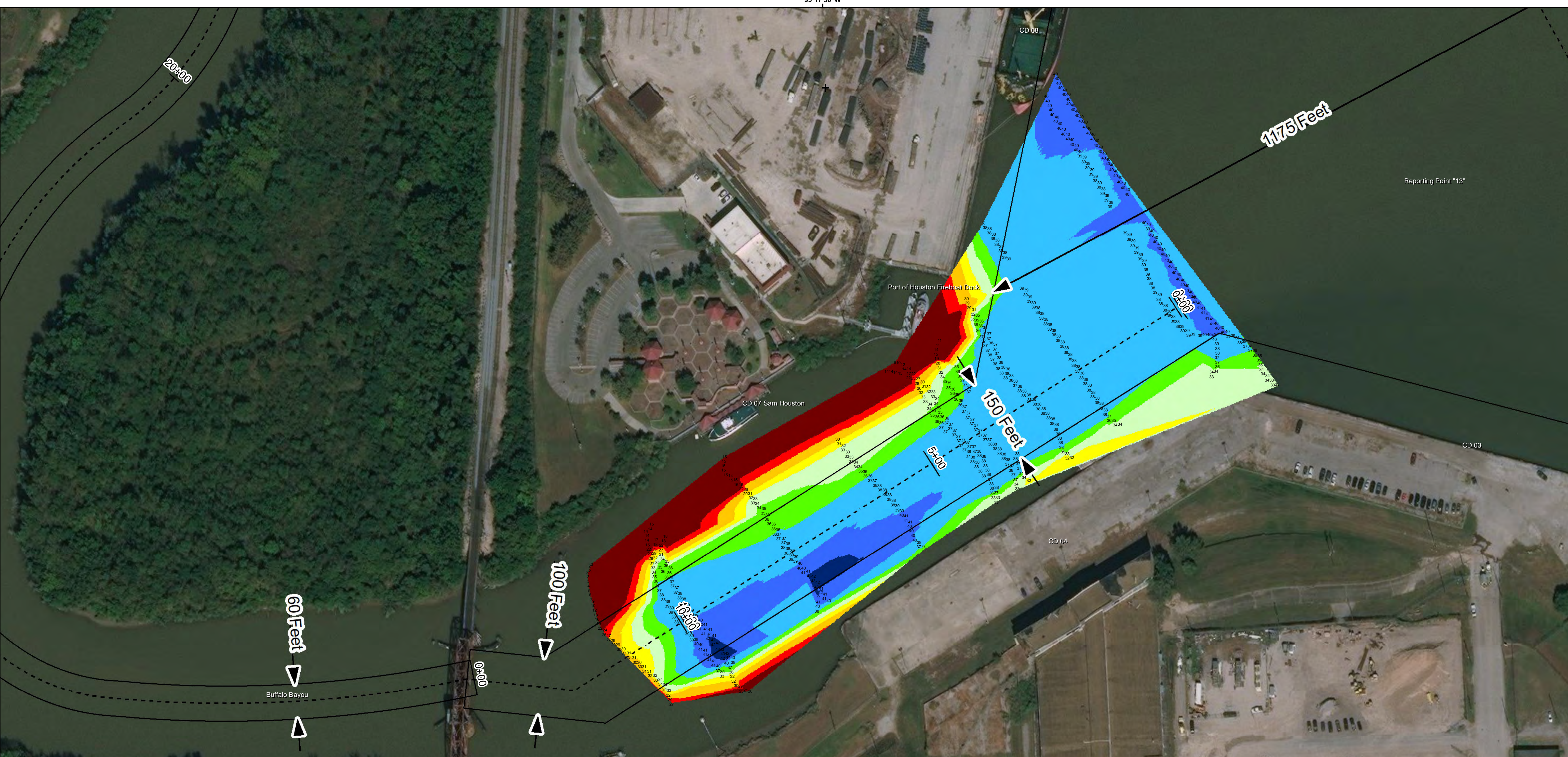
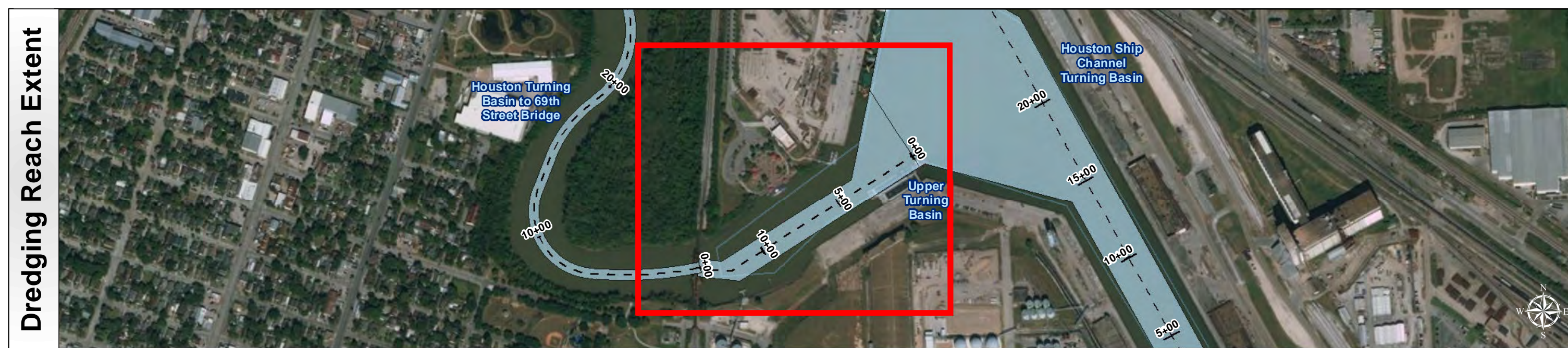
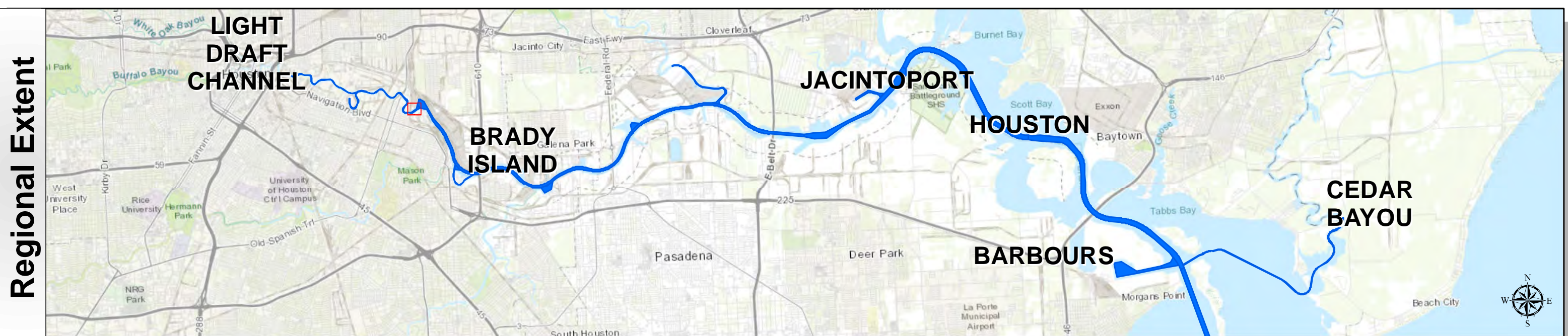


Houston Ship Channel: Upper Turning Basin



U.S. Army Corps of Engineers
Galveston District

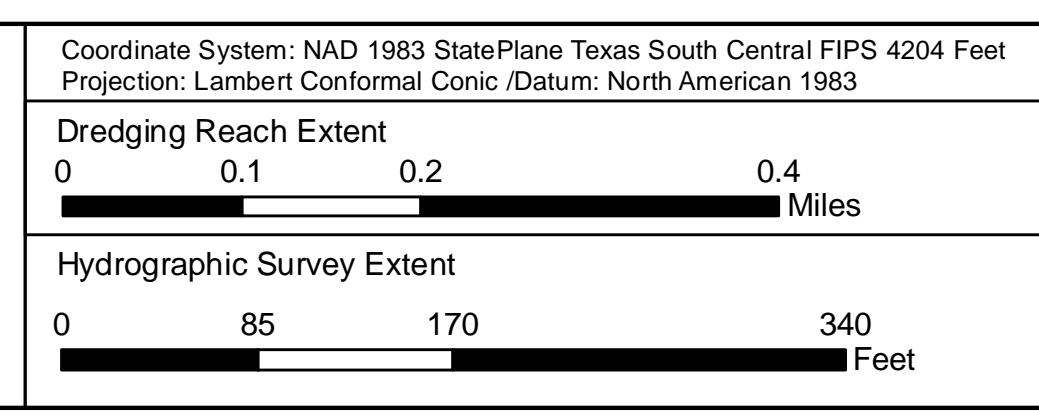
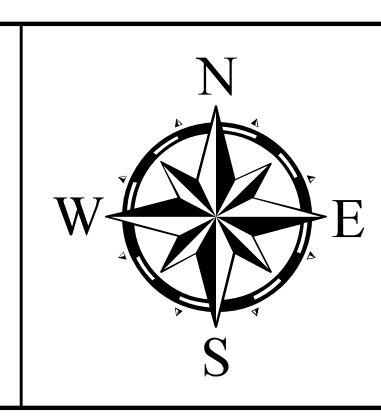


Channel Features	Aids to Navigation	MLLW
Channel Toe	Green Side Aids	0 - 25
Channel Center Line	Red Side Aids	25 - 28
Channel Station Lines	Lights	28 - 31
Channel Dimensions		31 - 33
		33 - 35
		35 - 37
		37 - 40
		40 - 42
		42+
		NOAA Bathymetry (DREDGING REACH EXTENT)
		0 - 10
		10 - 15
		15 - 20
		20 - 25
		25 - 30
		30 - 50

NOTES:

- HORIZONTAL COORDINATES ARE REFERENCED TO TEXAS STATE PLANE COORDINATE SYSTEM, SOUTH CENTRAL ZONE NAD83 US SURVEY FEET.
- ELEVATIONS ARE REFERENCED TO MEAN LOWER LOW TIDE (MLLW) DATUM.
- THIS PROJECT WAS DESIGNED BY THE GALVESTON DISTRICT OF THE U.S. ARMY CORPS OF ENGINEERS. THE INITIALS AND SIGNATURES AND REGISTRATION DESIGNATIONS OF INDIVIDUALS APPEAR ON THESE PROJECT DOCUMENTS WITHIN THE SCOPE OF THEIR EMPLOYMENT AS REQUIRED BY ER1110-1-8152.
- THE INFORMATION DEPICTED ON THIS SURVEY MAP REPRESENTS THE RESULTS OF SURVEYS MADE ON THE DATES INDICATED AND CAN ONLY BE CONSIDERED AS INDICATING THE GENERAL CONDITIONS EXISTING AT THAT TIME. THESE CONDITIONS ARE SUBJECT TO RAPID CHANGE DUE TO SHOALING EVENTS. A PRUDENT MARINER SHOULD NOT RELY EXCLUSIVELY ON THE INFORMATION PROVIDED HERE. REQUIRED BY 33 CFR 209.325
- FOR THE MOST UP TO DATE INFORMATION PLEASE CHECK OUR WEBSITE AT: [HTTP://WWW.SVG.USACE.ARMY.MIL/MISSIONS/NAVIGATION/HYDROGRAPHIC/SURVEYS/](http://www.svg.usace.army.mil/missions/navigation/hydrographic/surveys/)
- NOAA BATHYMETRY CONTOURS PRODUCED FROM HISTORIC BATHYMETRIC (HYDROGRAPHIC) SURVEYS CONDUCTED BY THE NOAA NATIONAL OCEAN SERVICE/COAST SURVEY, AVAILABLE FROM THE NATIONAL GEOPHYSICAL DATA CENTER. SURVEYS VARY AS TO SOUNDING DENSITY, ACCURACY OF DEPTH, ACCURACY OF NAVIGATION, ZERO DATUM, DATE OF SURVEY AND TYPE OF INSTRUMENTATION.

Service Layer Credits: Source: Esri, DigitalGlobe, GeoEye, Earthstar Geographics, CNES/Airbus DS, USDA, USGS, AeroGRID, IGN, and the GIS User Community
Sources: Esri, HERE, Garmin, Intermap, increment P Corp., GEBCO, USGS, FAO, NPS, NRCAN, GeBCO, IGN, Kadaster NL, Ordnance Survey, Esri Japan, METI, Esri China (Hong Kong), swisstopo, © OpenStreetMap contributors, and the GIS User Community
Esri, Garmin, GEBCO, NOAA NGDC, and other contributors



Survey Date(s): 10 May 2019	Authorized Depth: -37.5ft.
Page: 51 of 61	Side Slope Ratio: (Rise : Run)
Scale: 1:1,000	Additional Imagery: © DigitalGlobe Inc.
Mapped by: MSAOX PAC	Print Date: 5/24/2019
Additional Info:	

HYDROGRAPHIC SURVEY
U.S. ARMY ENGINEER DISTRICT
CORPS OF ENGINEERS
GALVESTON, TEXAS

Station: 0+32.59 to 10+00
HOUSTON
HOUSTON, TEXAS