

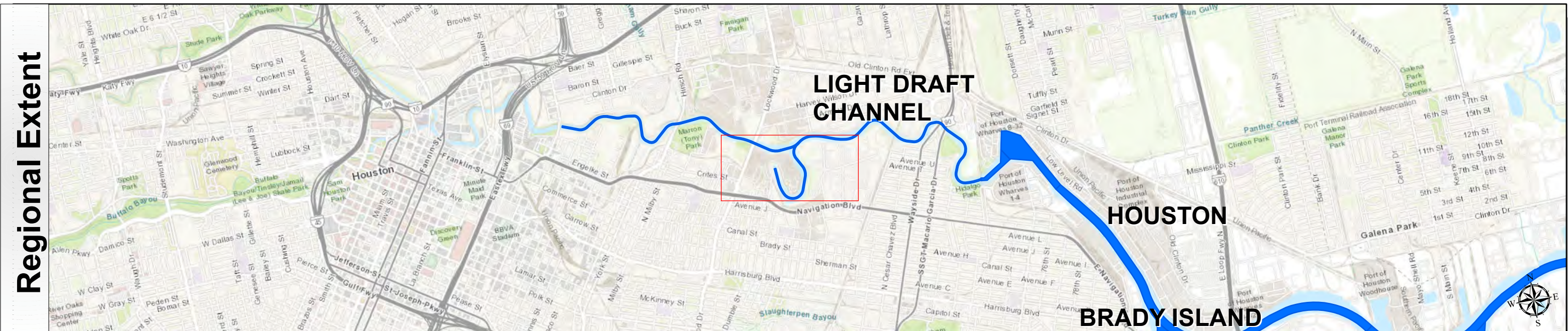
# Buffalo Bayou: Turkey Bend Channel



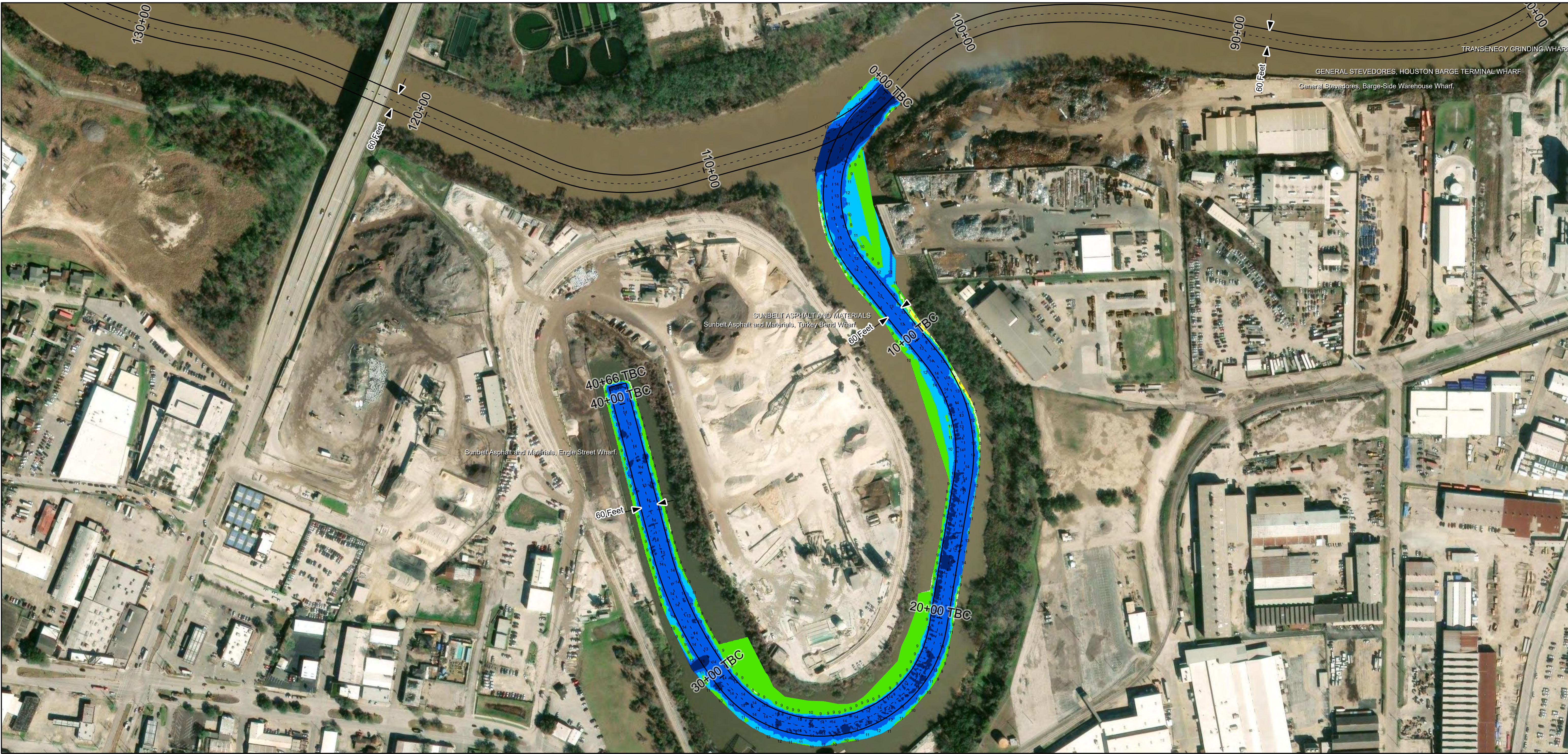
U.S. Army Corps of Engineers  
Galveston District



Regional Extent



Dredging Reach Extent



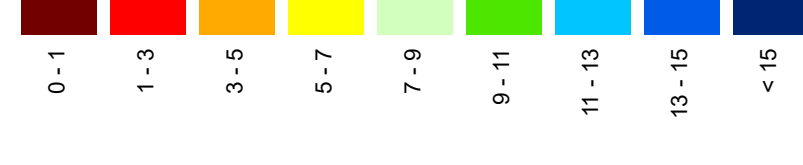
## Channel Features

- Channel Center Line
- Channel Toe
- Channel Dimensions

## Aids to Navigation

- Green Side Aids
- Red Side Aids
- Lights

## MLLW



## NOTES:

- Horizontal coordinates are referenced to Texas State Plane Coordinate System, South Central Zone NAD83 US Survey Feet.
  - Elevations are referenced to Mean Lower Low Water (MLLW) datum.
  - This project was designed by the Galveston District of the U.S. Army Corps of Engineers. The initials and signatures and registration designations of individuals appear on these project documents within the scope of their employment as required by 47CFR 110.1-41.02.
  - The information depicted on this survey map represents the results of surveys made on the dates indicated and can only be considered as indicating the general conditions existing at that time. These conditions are subject to rapid change due to shoaling events. A prudent mariner should not rely exclusively on the information provided here. Required by 33 CFR 209.325.
  - For the most up to date information please check our website at: <http://www.svg.usace.army.mil/Missions/Navigation/HydrographicSurveys/>
- Service Layer Credits: World Imagery, Maxar, Microsoft World Topographic Map: City of Houston, HPB, Texas Parks & Wildlife, Esri, HERE, Garmin, INCREMENT P, USGS, METINASA, NGA, EPA, USDA World Imagery: Maxar World Ocean Base: Esri, GEBCO, Garmin, NaturalVue

Additional Combined Survey Dates and Stationing:  
COMB\_SURV\_INFO\_HERE

Coordinate System: NAD 1983 StatePlane Texas South Central FIPS 4204 Feet  
Projection: Lambert Conformal Conic

Dredging Reach Extent  
0 0.2 0.4 0.8 Miles

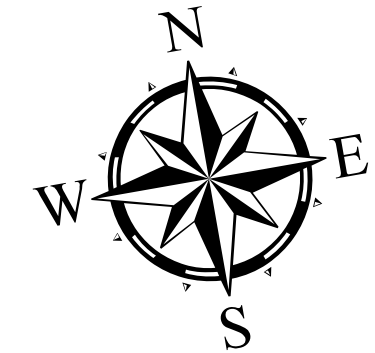
Hydrographic Survey Extent  
0 170 340 680 Feet

## HYDROGRAPHIC SURVEY

U.S. ARMY ENGINEER DISTRICT  
CORPS OF ENGINEERS  
GALVESTON, TEXAS

Station: 0+00 to 40+66  
LIGHT DRAFT CHANNEL

Turkey Bend Channel



Latest Survey Collection Date: 19 December 2024

Document Page: 1 of 1

Website Index Number: 3

Scale: 1:2,000

Mapped by: m3odnmhg

Additional Imagery info:

Authorized Depth: -11ft.

Width Range: 60ft to 60ft

Side Slope Ratio: (Rise : Run)

PDF Print Date: 2/20/2025