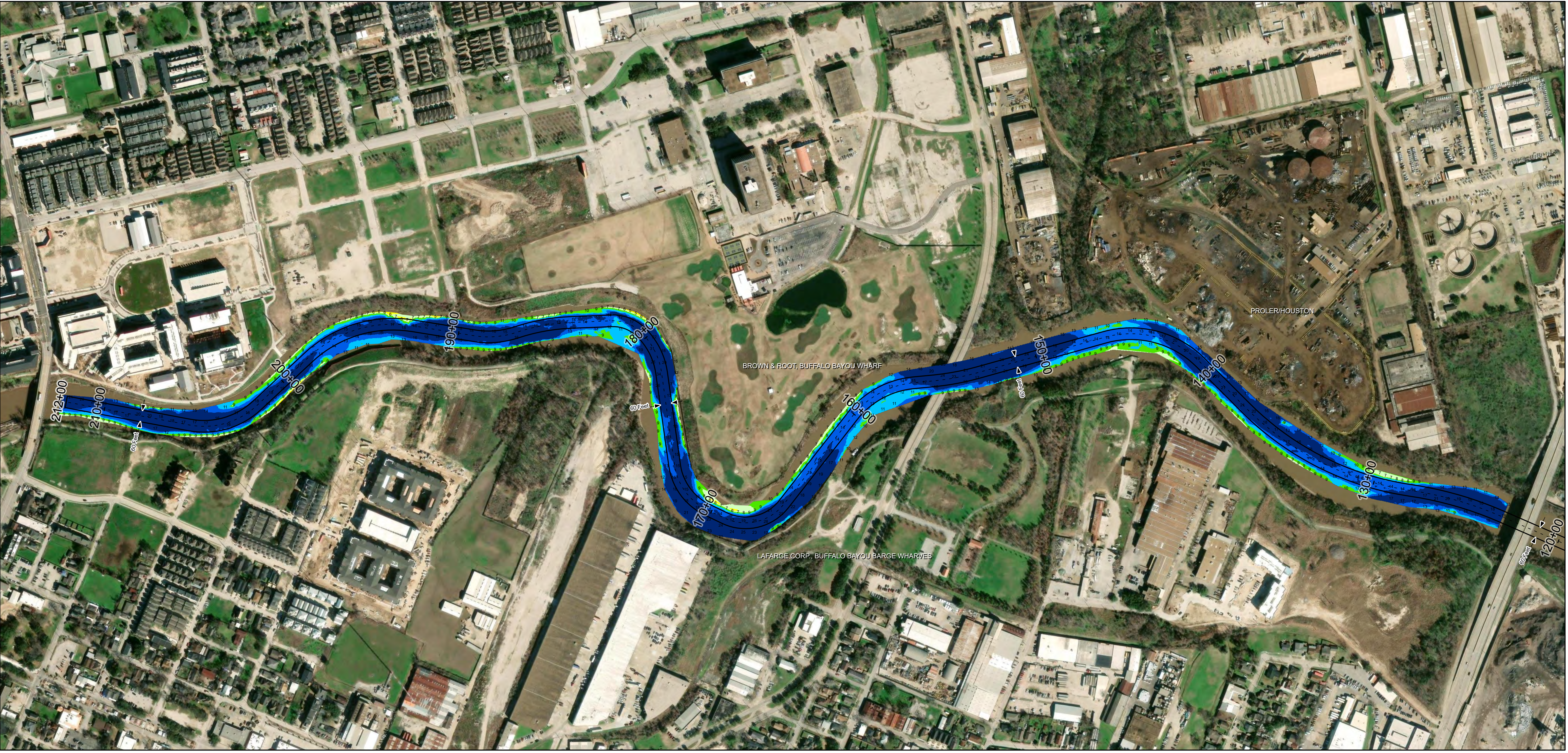
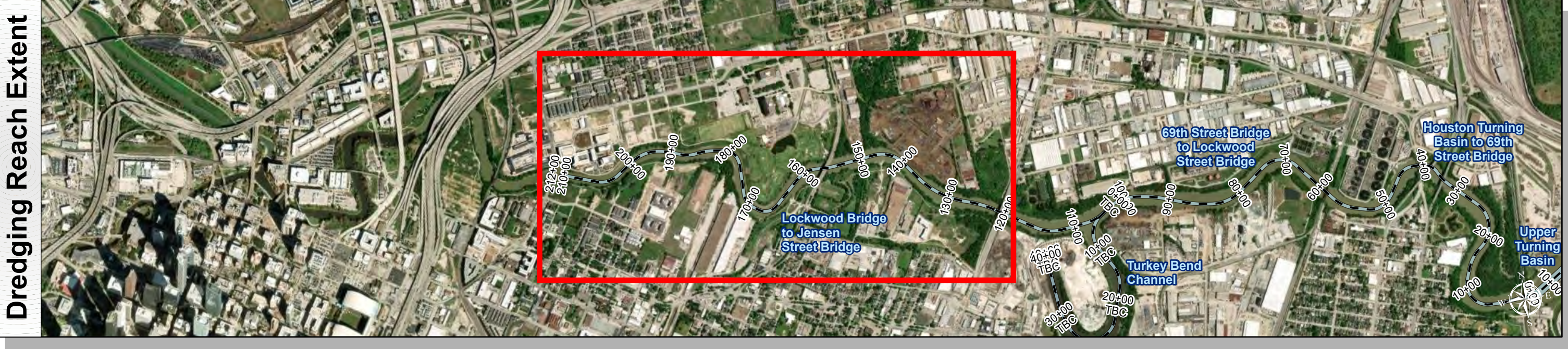
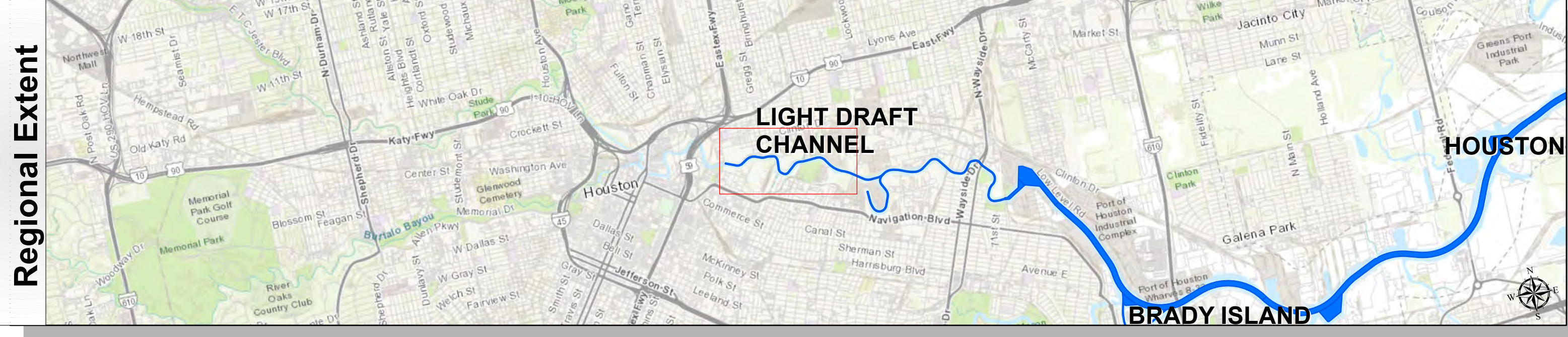


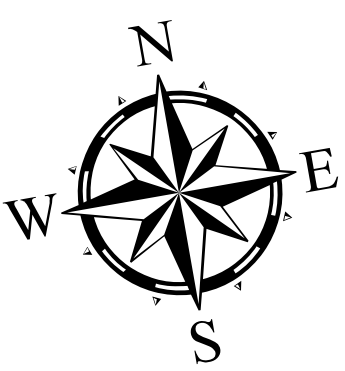
# Buffalo Bayou: Lockwood Bridge to Jensen Street Bridge



U.S. Army Corps of Engineers  
Galveston District



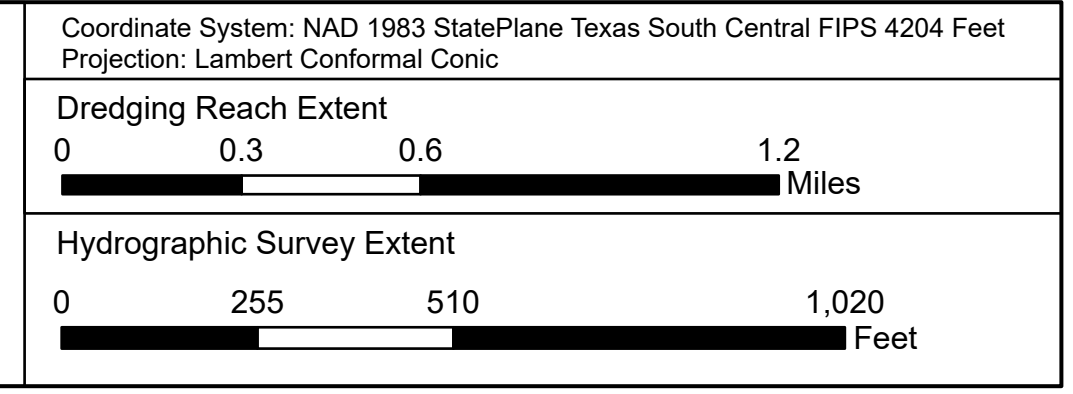
Latest Survey Collection Date: 19 December 2024	Authorized Depth: -11ft.
Document Page: 1 of 1	Width Range: 60ft to 60ft
Scale: 1:3,000	Side Slope Ratio: (Rise : Run)
Mapped by: m3odnmhg	PDF Print Date: 3/10/2025
Additional Imagery info:	
Website Index Number: 4	



Channel Features	Aids to Navigation
Channel Center Line	Green Side Aids
Channel Toe	Red Side Aids
Channel Dimensions	Lights

**NOTES:**  
 1. Horizontal coordinates are referenced to Texas State Plane Coordinate System, South Central Zone NAD83 US Survey Feet.  
 2. Elevations are referenced to Mean Lower Low Water (MLLW) datum.  
 3. This project was designed by the Galveston District of the U.S. Army Corps of Engineers. The initials and signatures and registration designations of individuals appear on these project documents within the scope of their employment as required by 47CFR 111.10-141.12.  
 4. The information depicted on this survey map represents the results of surveys made on the dates indicated and can only be considered as indicating the general conditions existing at that time. These conditions are subject to rapid change due to shoaling events. A prudent mariner should not rely exclusively on the information provided here. Required by 33 CFR 209.225.  
 5. For the most up to date information please check our website at: <http://www.svg.usace.army.mil/Missions/Navigation/HydrographicSurveys/>  
 Service Layer Credits: World Topographic Map: City of Houston, HPB, Texas Parks & Wildlife, Esri, HERE, Garmin, INCREMENT P, USGS, METINASA, NGA, EPA, USDA  
 World Imagery: Maxar  
 World Ocean Base: Esri, GEBCO, Garmin, NaturalVue

Additional Combined Survey Dates and Stationing:  
 COMB\_SURV\_INFO\_HERE



**HYDROGRAPHIC SURVEY**  
 U.S. ARMY ENGINEER DISTRICT  
 CORPS OF ENGINEERS  
 GALVESTON, TEXAS

**Station: 123+22 to 212+00**  
**LIGHT DRAFT CHANNEL**  
 Lockwood Bridge to Jensen Street Bridge