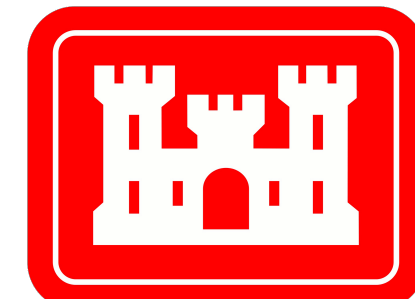
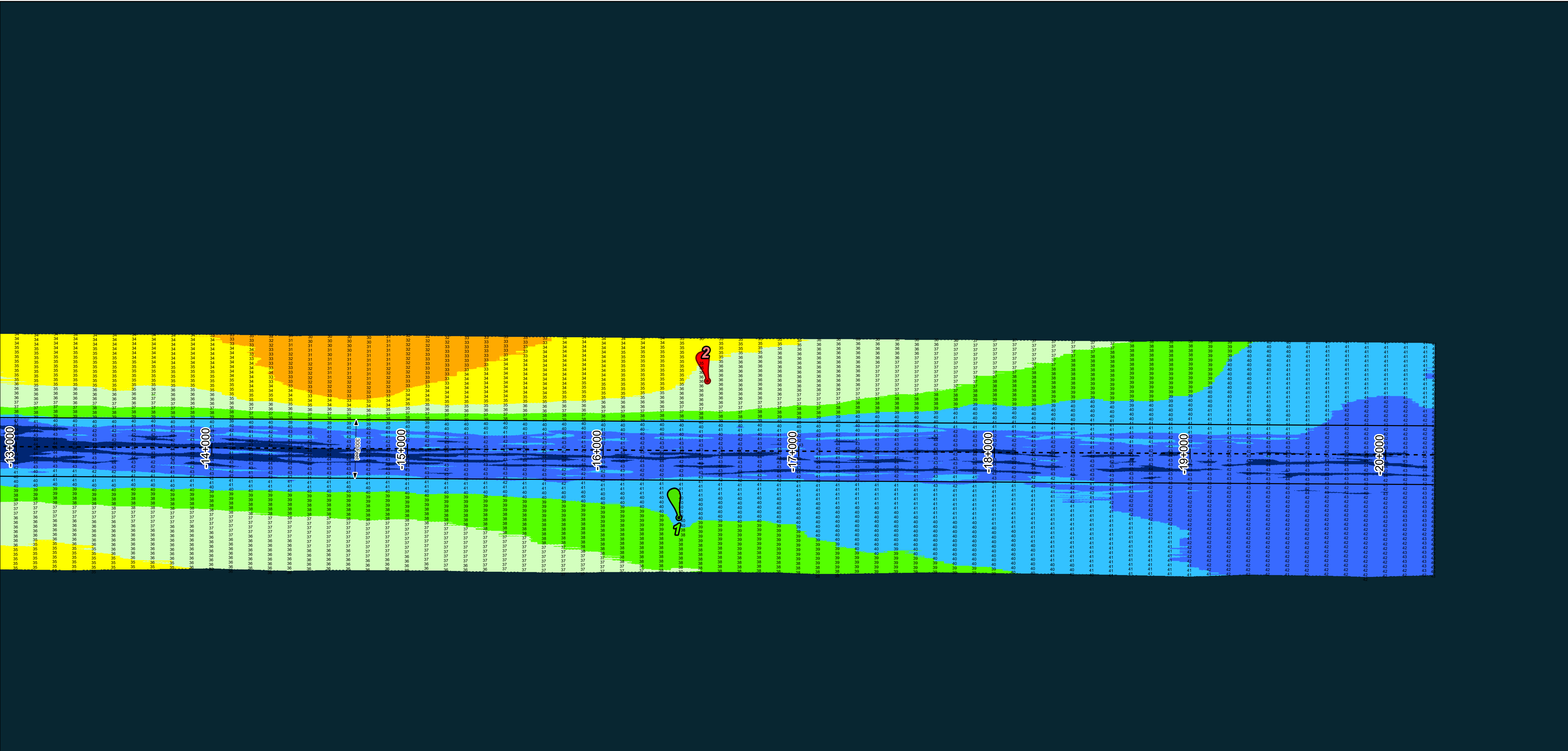
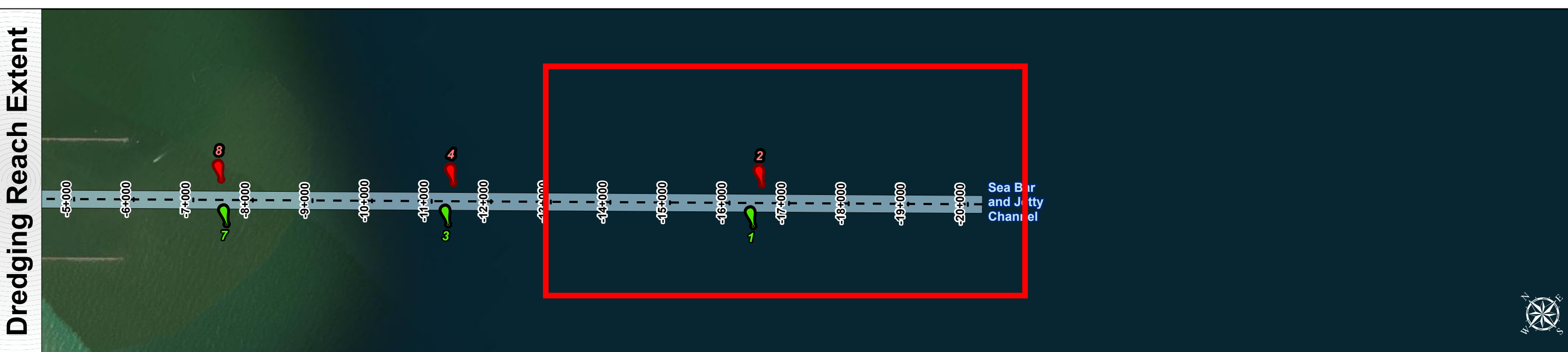
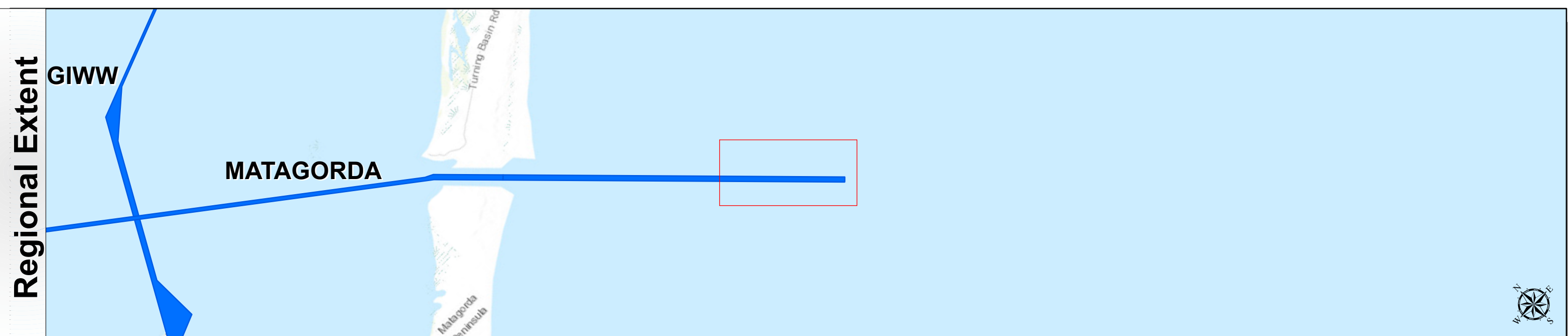
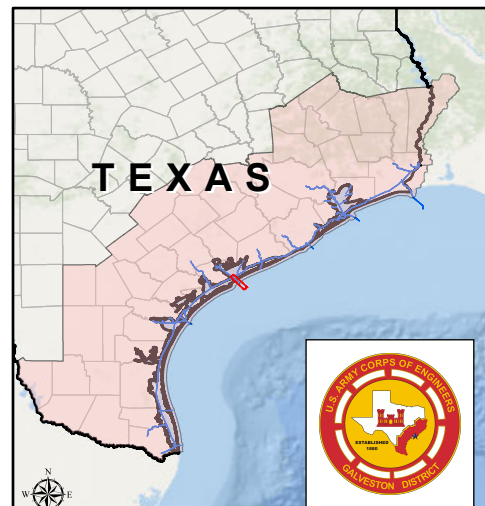


# Matagorda Ship Channel: Sea Bar and Jetty Channel



U.S. Army Corps of Engineers  
Galveston District



Channel Features

Channel Center Line

Channel Toe

Channel Station Lines

Channel Dimensions

Aids to Navigation

Green Side Aids

Red Side Aids

Lights

MLLW

0 -25

25 -30

30 -34

34 -36

36 -38

38 -40

40 -42

42 -44

< 44

NOTES:

1. Horizontal coordinates are referenced to Texas state plane coordinate system, south central zone nad83 us survey feet.

2. Elevations are referenced to mean lower low tide (MLLW) datum.

3. This project was designed by the galveston district of the u.s. army corps of engineers. The initials and signatures and registration designations of individuals appear on these project documents within the scope of their employment as required by er1110-1-6152.

4. The information depicted on this survey map represents the results of surveys made on the dates indicated and can only be considered as indicating the general conditions existing at that time. These conditions are subject to rapid change due to shoaling events. A prudent mariner should not rely exclusively on the information provided here. Required by 33 or 209.325

5. For the most up to date information please check our website at: <http://www.svg.usace.army.mil/Missions/Navigation/HydrographicSurveys/>

Service Layer Credits: World Topographic Map, Texas Parks & Wildlife, Esri, HERE, Garmin, INCREMENT P, USGS, METINASA, NGA, EPA, USDA

World Imagery: Maxar

World Ocean Base: Esri, GEBCO, Garmin, NaturalVue

Additional Combined Survey Dates and Stationing:

COMB\_SURV\_INFO\_HERE

Coordinate System: NAD 1983 StatePlane Texas South Central FIPS 4204 Feet

Projection: Lambert Conformal Conic

Dredging Reach Extent

0

0.3

0.6

1.2

Miles

Hydrographic Survey Extent

0

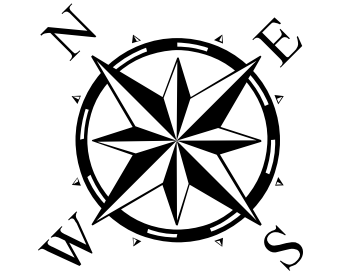
255

510

1,020

Feet

Latest Survey Collection Date: 22 December 2023		Authorized Depth: -40ft.	
Document Page: 1 of 3	Website Index Number: 1	Side Slope Ratio: ( Rise : Run)	PDF Print Date: 12/28/2023
Scale: 1:3,000		Mapped by: m3odnmhg	
Additional Imagery info:			



HYDROGRAPHIC SURVEY

U.S. ARMY ENGINEER DISTRICT

CORPS OF ENGINEERS

GALVESTON, TEXAS

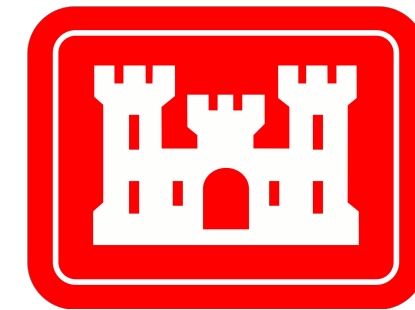
Station: -20+000 to 0+000

MATAGORDA

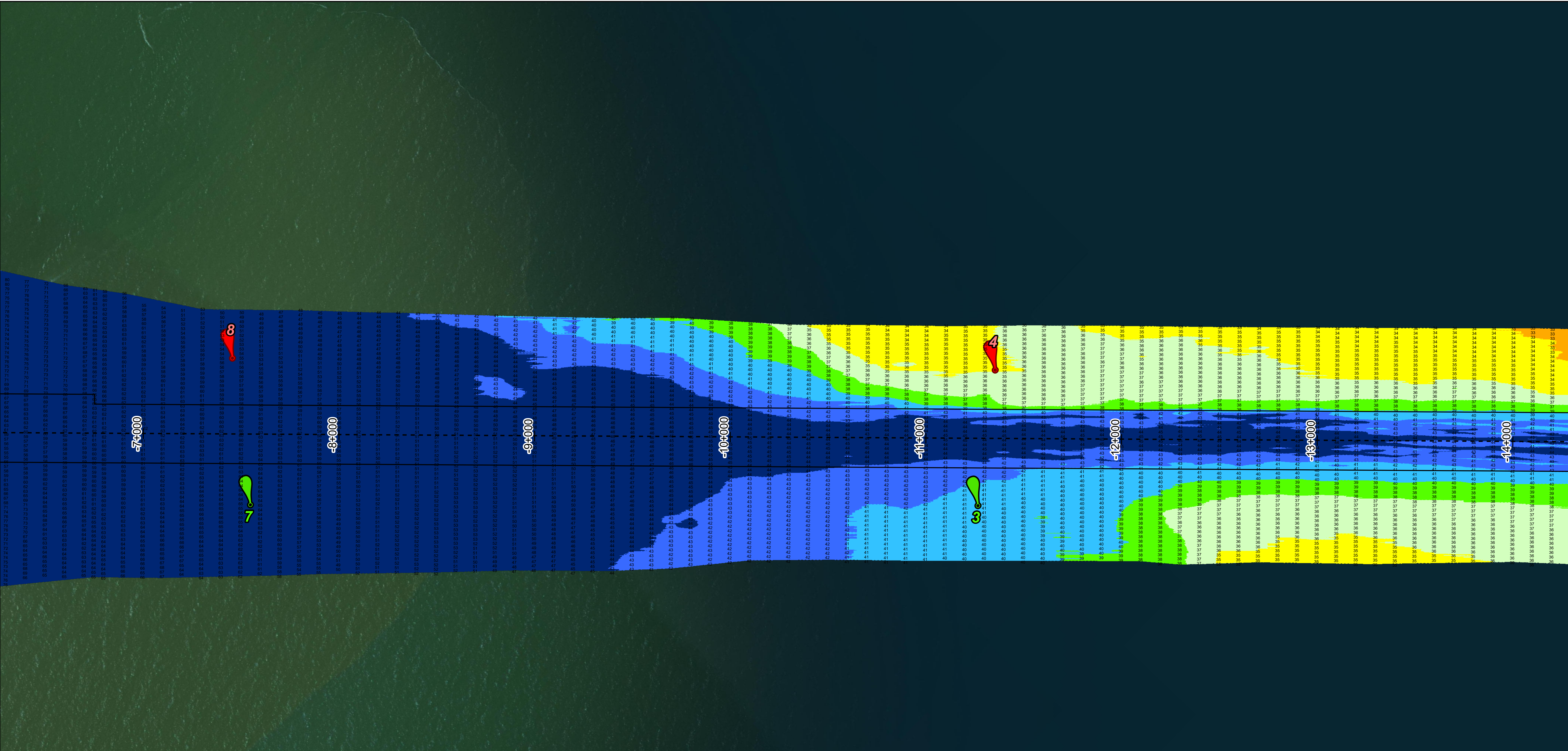
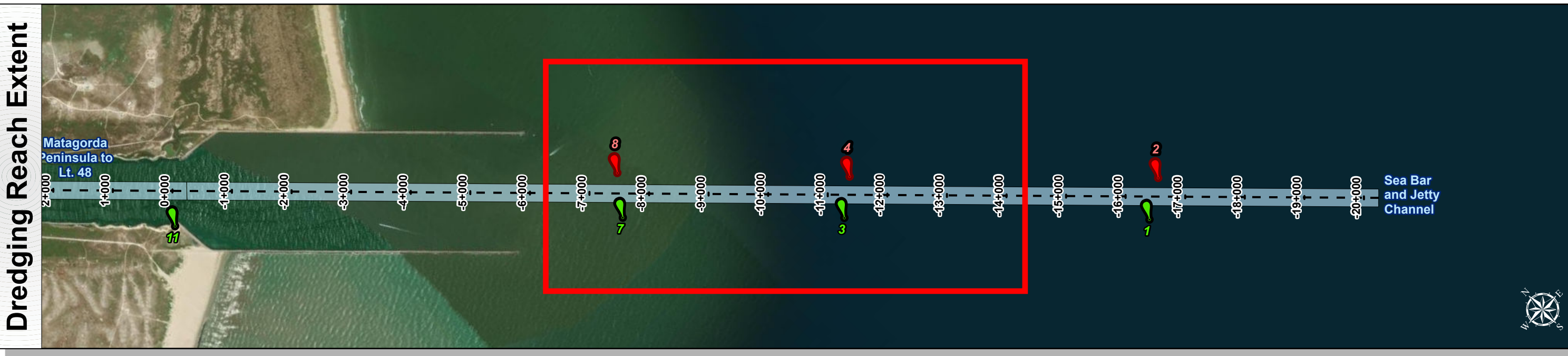
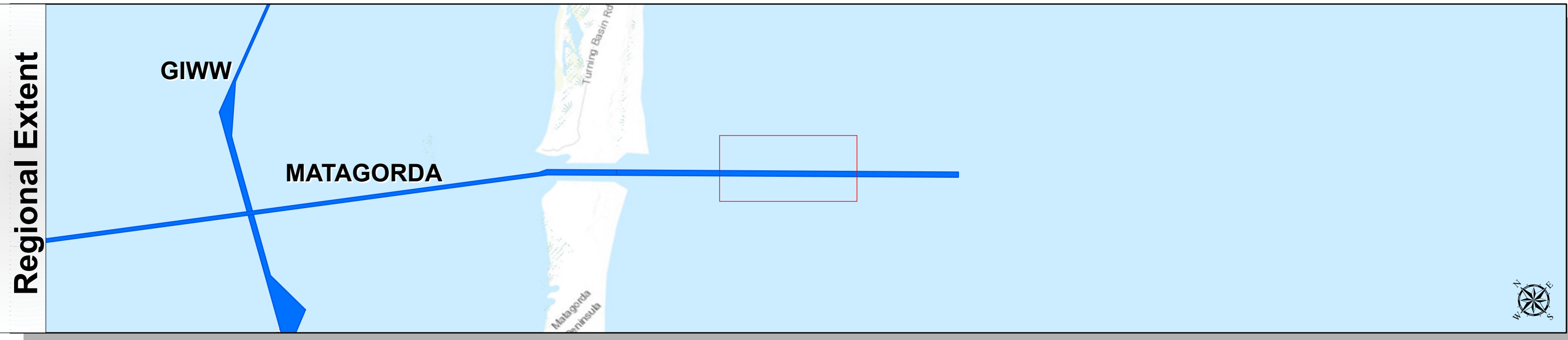
Sea Bar and Jetty Channel



# Matagorda Ship Channel: Sea Bar and Jetty Channel



U.S. Army Corps of Engineers  
Galveston District



**Channel Features**

- Channel Center Line
- Channel Toe
- Channel Station Lines
- Channel Dimensions

**Aids to Navigation**

- Green Side Aids
- Red Side Aids
- Lights

**MLLW**

0 - 25	25 - 30	30 - 34	34 - 36	36 - 38	38 - 40	40 - 42	42 - 44	< 44

**NOTES:**

- Horizontal coordinates are referenced to Texas state plane coordinate system, south central zone nad83 us survey feet.
- Elevations are referenced to mean lower low tide (MLLW) datum.
- This project was designed by the galveston district of the u.s. army corps of engineers. The initials and signatures and registration designations of individuals appear on these project documents within the scope of their employment as required by er1110-6152.
- The information depicted on this survey map represents the results of surveys made on the dates indicated and can only be considered as indicating the general conditions existing at that time. These conditions are subject to rapid change due to shoaling events. A prudent mariner should not rely exclusively on the information provided here. Required by 33 CFR 209.325
- For the most up to date information please check our website at: <http://www.svg.usace.army.mil/Missions/Navigation/HydrographicSurveys/>

Service Layer Credits: World Topographic Map, Texas Parks & Wildlife, Esri, HERE, Garmin, INCREMENT P, USGS, MET/NASA, NOAA, EPA, USDA, World Imagery, Maxar, World Ocean Base, Esri, GEBCO, Garmin, NaturalVue

**Additional Combined Survey Dates and Stationing:**

COMB\_SURV\_INFO\_HERE

**Coordinate System:** NAD 1983 StatePlane Texas South Central FIPS 4204 Feet  
**Projection:** Lambert Conformal Conic

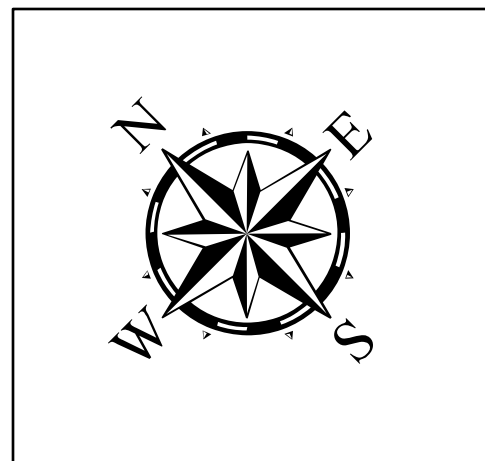
**Dredging Reach Extent**

0 0.3 0.6 1.2 Miles

**Hydrographic Survey Extent**

0 255 510 1,020 Feet

Latest Survey Collection Date: 22 December 2023		Authorized Depth: -40ft.	
Document Page: 2 of 3	Website Index Number: 2	Side Slope Ratio: (Rise : Run)	PDF Print Date: 12/28/2023
Scale: 1:3,000		Mapped by: m3odnmhg	
Additional Imagery info:			



**HYDROGRAPHIC SURVEY**

U.S. ARMY ENGINEER DISTRICT  
CORPS OF ENGINEERS  
GALVESTON, TEXAS

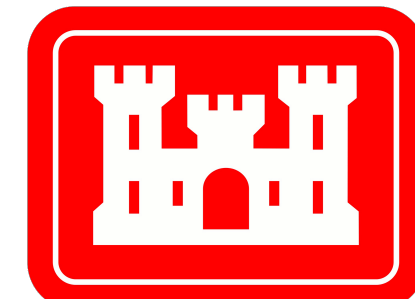
**Station: -20+000 to 0+000**

**MATAGORDA**

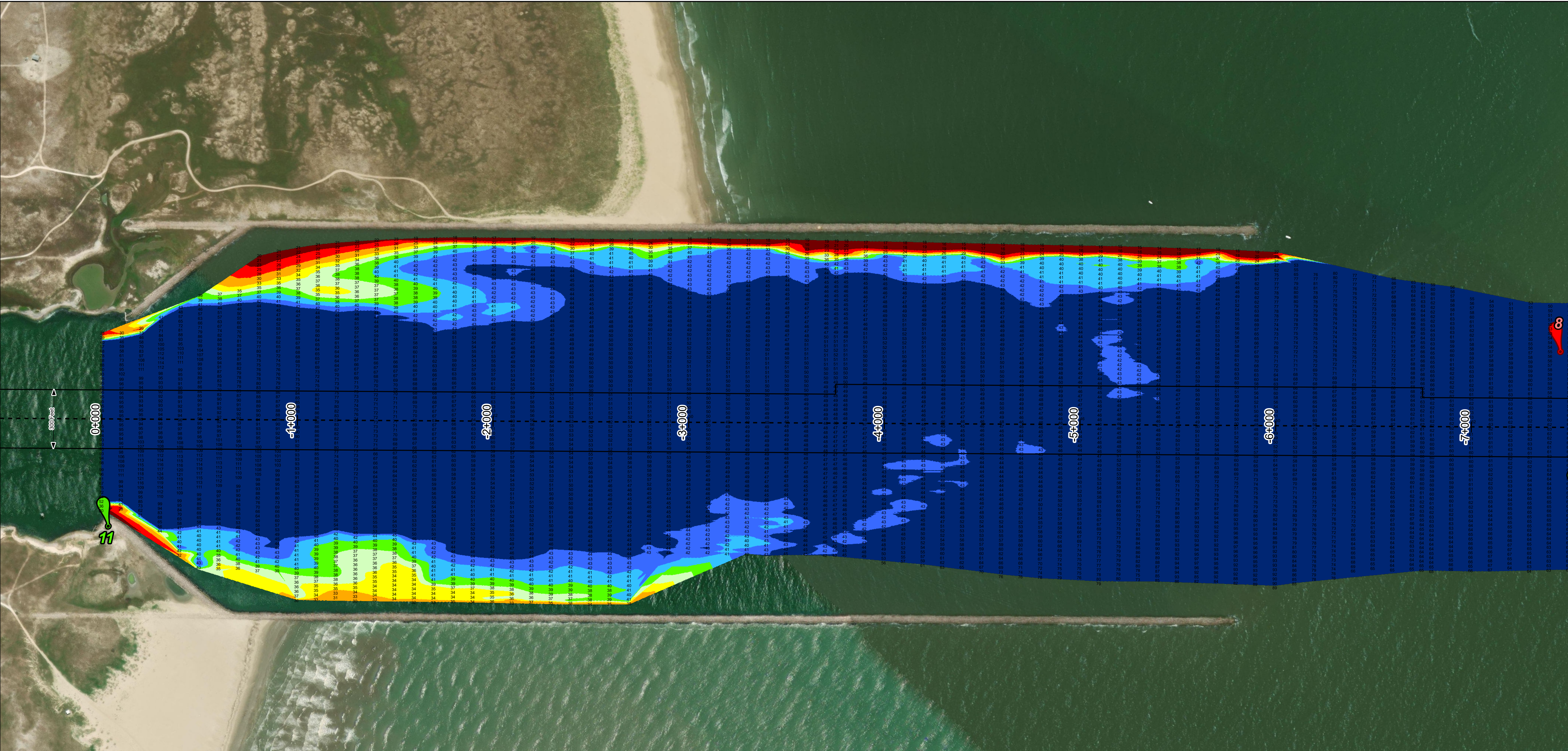
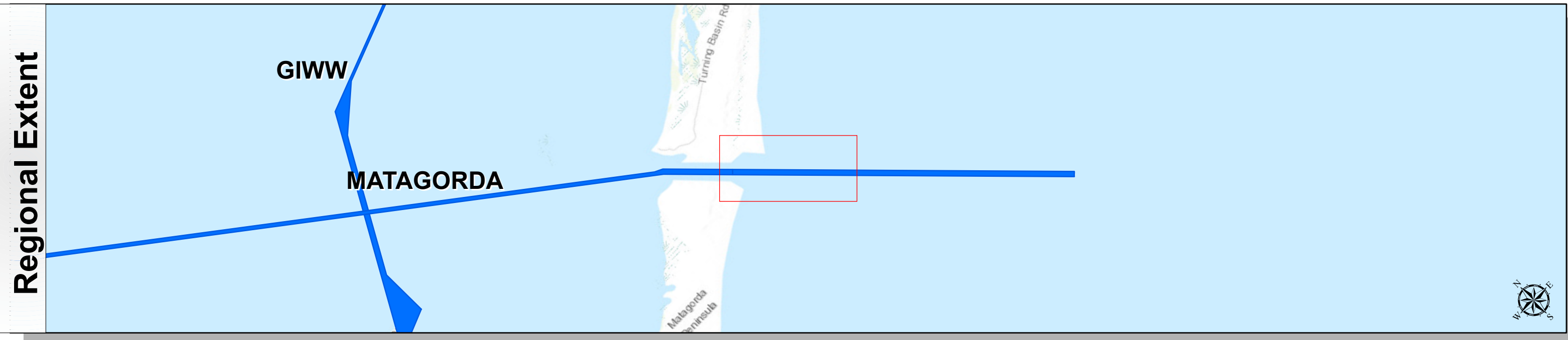
Sea Bar and Jetty Channel



# Matagorda Ship Channel: Sea Bar and Jetty Channel



U.S. Army Corps of Engineers  
Galveston District



**Channel Features**

Channel Center Line

Channel Toe

Channel Station Lines

Channel Dimensions

**Aids to Navigation**

Green Side Aids

Red Side Aids

Lights

**NOTES:**

1. Horizontal coordinates are referenced to Texas state plane coordinate system, south central zone nad83 us survey feet.

2. Elevations are referenced to mean lower low tide (MLLW) datum.

3. This project was designed by the galveston district of the u.s. army corps of engineers. The initials and signatures and registration designations of individuals appear on these project documents within the scope of their employment as required by er1110-1-6152.

4. The information depicted on this survey map represents the results of surveys made on the dates indicated and can only be considered as indicating the general conditions existing at that time. These conditions are subject to rapid change due to shoaling events. A prudent mariner should not rely exclusively on the information provided here. Required by 33 or 209.325

5. For the most up to date information please check our website at: <http://www.svg.usace.army.mil/Missions/Navigation/HydrographicSurveys/>

Service Layer Credits: World Topographic Map, Texas Parks & Wildlife, Esri, HERE, Garmin, INCREMENT P, USGS, METINASA, NGA, EPA, USDA, World Imagery, Maxar, World Ocean Base, Esri, GEBCO, Garmin, NaturalVue

**Additional Combined Survey Dates and Stationing:**

COMB\_SURV\_INFO\_HERE

**Coordinate System:** NAD 1983 StatePlane Texas South Central FIPS 4204 Feet  
**Projection:** Lambert Conformal Conic

**Dredging Reach Extent**

00.30.61.2

Miles

**Hydrographic Survey Extent**

02555101,020

Feet

**HYDROGRAPHIC SURVEY**

U.S. ARMY ENGINEER DISTRICT  
CORPS OF ENGINEERS  
GALVESTON, TEXAS

**Station: -20+000 to 0+000**  
**MATAGORDA**  
Sea Bar and Jetty Channel

**Latest Survey Collection Date:** 22 December 2023

**Document Page:** 3 of 3

**Scale:** 1:3,000

**Mapped by:** m3odnmhg

**Additional Imagery info:**

**Authorized Depth:** -40ft.

**Side Slope Ratio:** (Rise : Run)

**PDF Print Date:** 12/28/2023

**North**