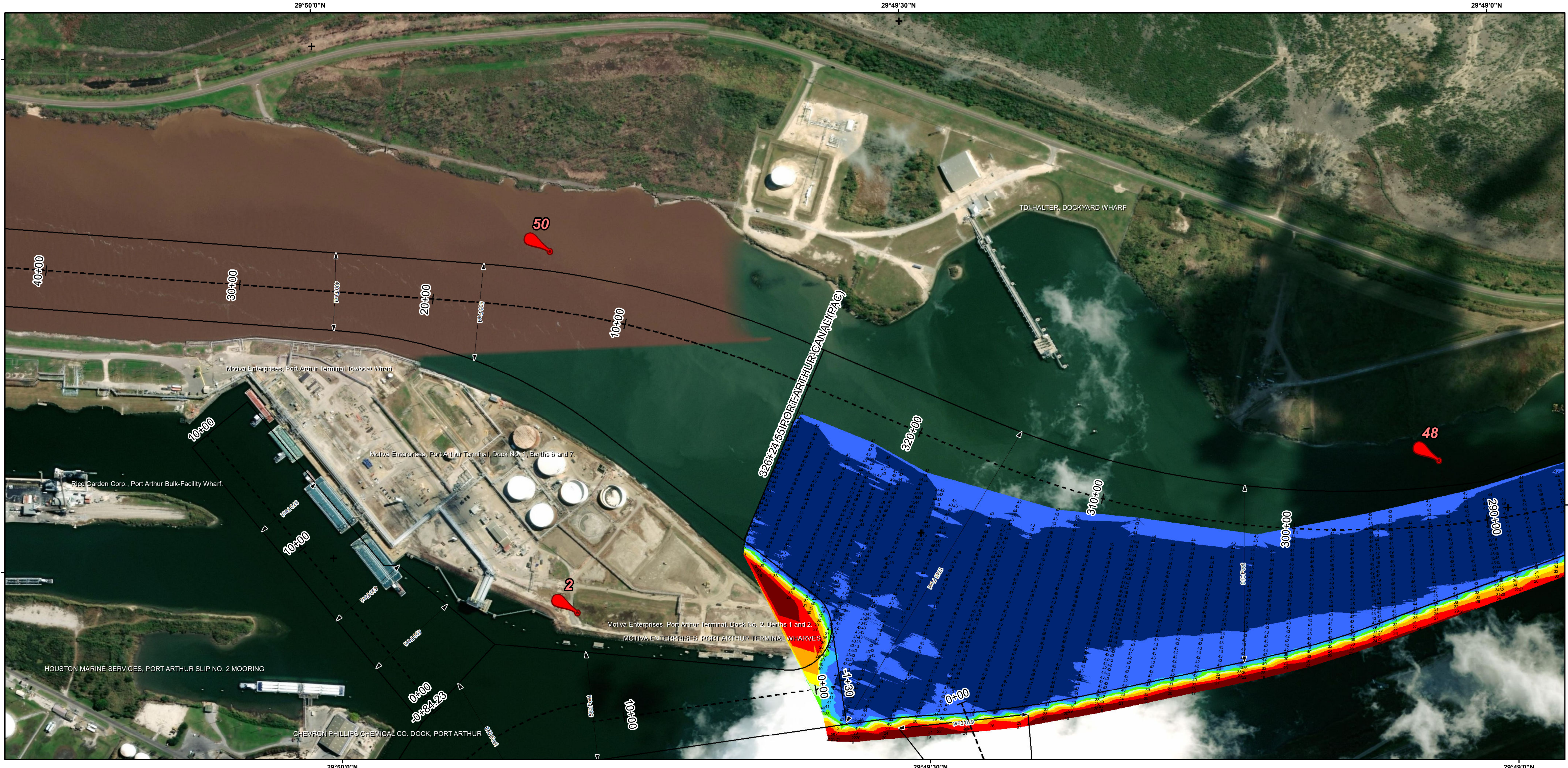
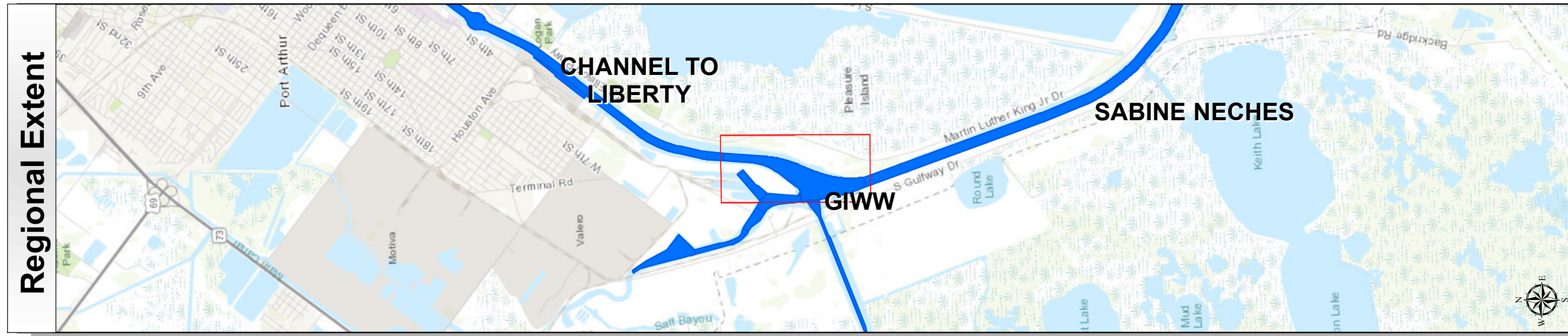


Sabine Neches Waterway: Junction Port Arthur Canal and Sabine-Neches Canal

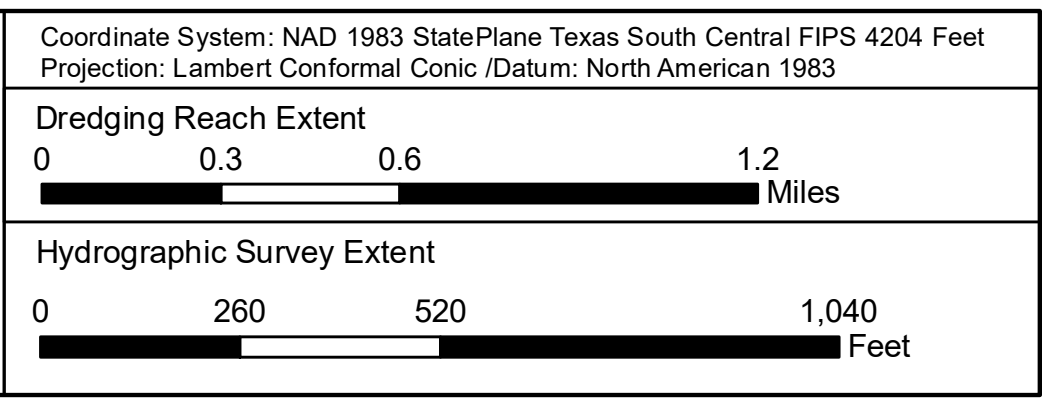
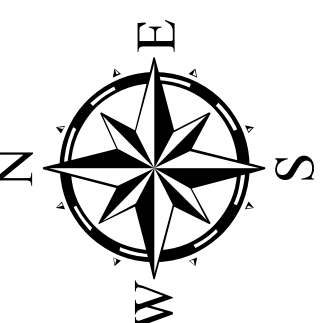


Channel Features	Aids to Navigation	MLLW	
— Channel Toe	Green Side Aids		
- - - Channel Center Line	Red Side Aids	0 - 25	
— Channel Station Lines	Lights	25 - 30	
↔ Channel Dimensions		30 - 34	
		34 - 36	
		36 - 38	
		38 - 40	
		40 - 42	
		42 - 44	
		< 44	
		NOAA Bathymetry (DREDGING REACH EXTENT)	
		0 - 10	10 - 15
		15 - 20	20 - 25
		25 - 30	30 - 50

NOTES:
 1. HORIZONTAL COORDINATES ARE REFERENCED TO TEXAS STATE PLANE COORDINATE SYSTEM, SOUTH CENTRAL ZONE NAD83 US SURVEY FEET.
 2. ELEVATIONS ARE REFERENCED TO MEAN LOWER LOW TIDE (MLLW) DATUM.
 3. THIS PROJECT WAS DESIGNED BY THE GALVESTON DISTRICT OF THE U.S. ARMY CORPS OF ENGINEERS. THE INITIALS AND SIGNATURES AND REGISTRATION DESIGNATIONS OF INDIVIDUALS APPEAR ON THESE PROJECT DOCUMENTS WITHIN THE SCOPE OF THEIR EMPLOYMENT AS REQUIRED BY ER1110-1-8152.

4. THE INFORMATION DEPICTED ON THIS SURVEY MAP REPRESENTS THE RESULTS OF SURVEYS MADE ON THE DATES INDICATED AND CAN ONLY BE CONSIDERED AS INDICATING THE GENERAL CONDITIONS EXISTING AT THAT TIME. THESE CONDITIONS ARE SUBJECT TO RAPID CHANGE DUE TO SHOALING EVENTS. A PRUDENT MARINER SHOULD NOT RELY EXCLUSIVELY ON THE INFORMATION PROVIDED HERE. REQUIRED BY 33 CFR 209.325
 5. FOR THE MOST UP TO DATE INFORMATION PLEASE CHECK OUR WEBSITE AT: [HTTP://WWW.SWG.USACE.ARMY.MIL/MISSIONS/NAVIGATION/HYDROGRAPHIC/SURVEYS/](http://www.swg.usace.army.mil/missions/navigation/hydrographic/surveys/)
 6. NOAA BATHYMETRY CONTOURS PRODUCED FROM HISTORIC BATHYMETRIC (HYDROGRAPHIC) SURVEYS CONDUCTED BY THE NOAA NATIONAL OCEAN SERVICE COAST SURVEY, AVAILABLE FROM THE NATIONAL GEOPHYSICAL DATA CENTER. SURVEYS VARY AS TO SOUNDING DENSITY, ACCURACY OF DEPTH, ACCURACY OF NAVIGATION, ZERO DATUM, DATE OF SURVEY AND TYPE OF INSTRUMENTATION.

Service Layer Credits: Source: Esri, DigitalGlobe, GeoEye, Earthstar Geographics, CNES/Airbus DS, USDA, USGS, AeroGRID, IGN, and the GIS User Community
 Sources: Esri, HERE, Garmin, Intermap, Increment P Corp., GEBCO, USGS, FAO, NPS, NRCAN, GeoBase, IGN, Kadaster NL, Ordnance Survey, Esri Japan, METI, Esri China (Hong Kong), (c) OpenStreetMap contributors, and the GIS User Community
 Esri, Garmin, GEBCO, NOAA NGDC, and other contributors



Survey Date(s): 03 October 2019	Authorized Depth: -40ft.
Page: 23 of 74	Map:
Scale: 1:3,000	Side Slope Ratio: (Rise : Run)
Mapped by: m3odhmmg	Additional Imagery: © DigitalGlobe Inc.
Additional Info:	Print Date: 11/19/2019

HYDROGRAPHIC SURVEY
 U.S. ARMY ENGINEER DISTRICT
 CORPS OF ENGINEERS
 GALVESTON, TEXAS

Station: 290+00 to 40+00
SABINE NECHES
 PORT ARTHUR, TEXAS