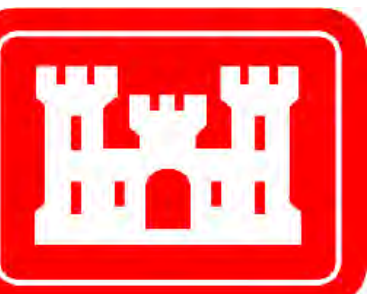


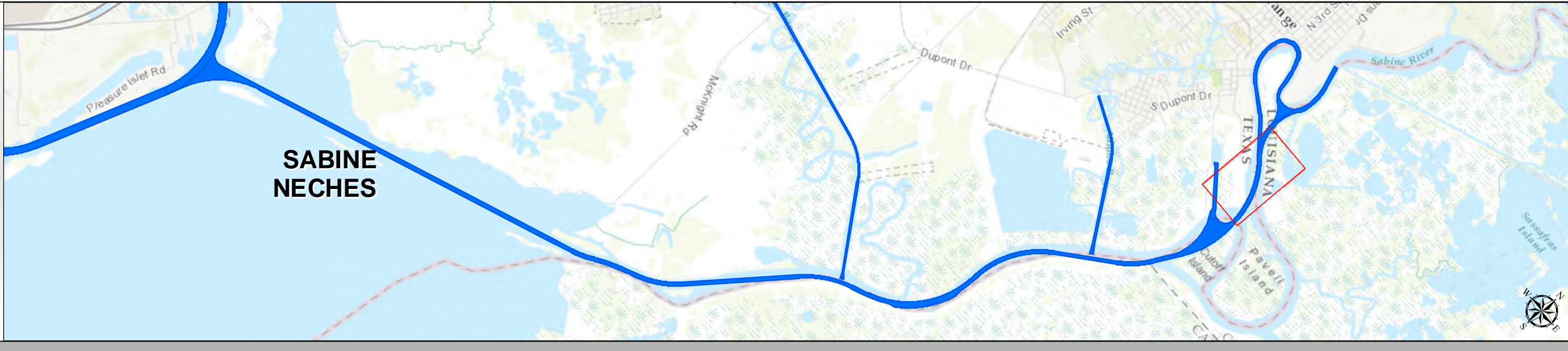
# Sabine Neches Waterway: Orange Truning Basin to Highway 90 Bridge



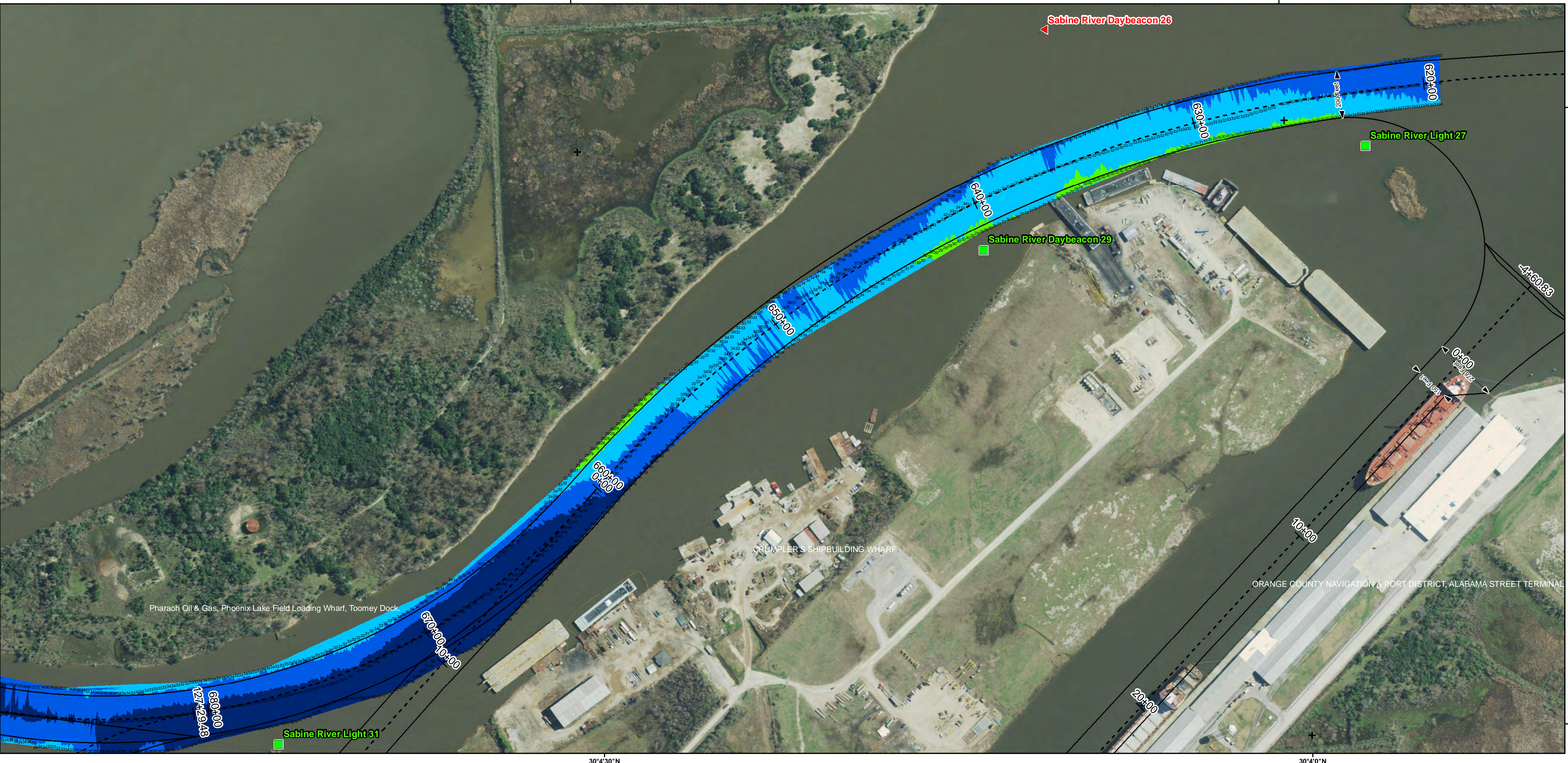
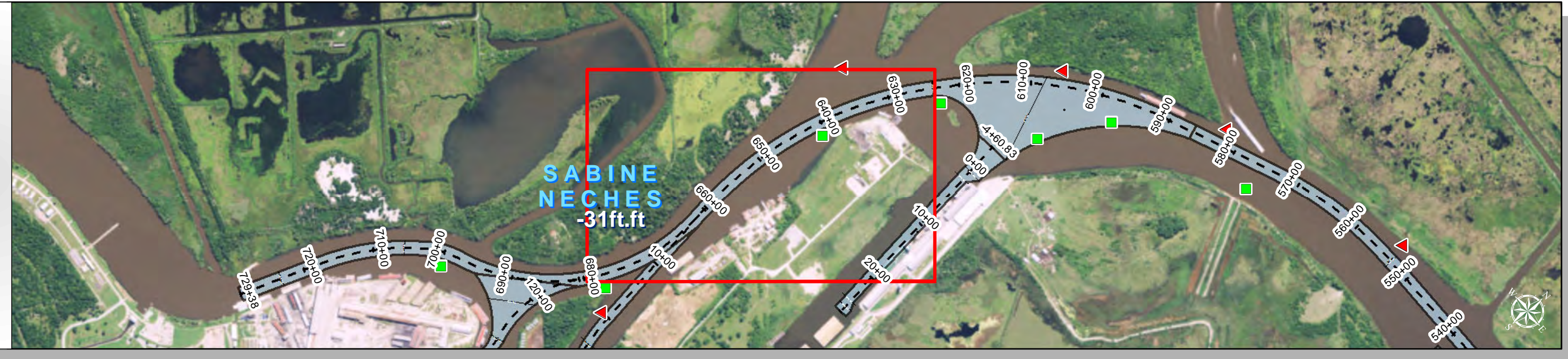
U.S. Army Corps of Engineers  
Galveston District



Regional Extent



Dredging Reach Extent

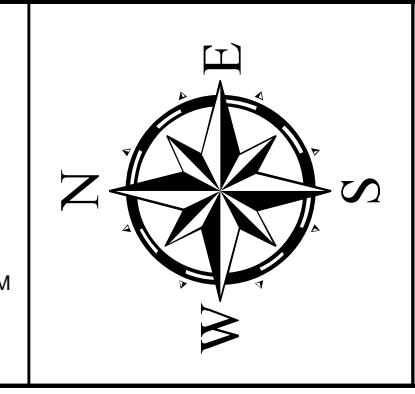


Survey Date(s): 04 September 2017	Authorized Depth: -31ft.
Page: 43 of 72	Side Slope Ratio: (Rise : Run)
Map:	Additional Imagery: © DigitalGlobe Inc.
Scale: 1:2,500	Print Date: 9/7/2017
Mapped by: M3AOXPAC	Additional Info :

Channel Features	Aids to Navigation	MLLW
— Channel Toe	★ Lights	0 - 10
- - - Channel Center Line	▲ Red Side Aids	10 - 20
— Channel Station Lines	■ Green Side Aids	20 - 24
↔ Channel Dimensions	◆ Mooring Buoy	24 - 26
		26 - 28
		28 - 31
		31 - 35
		35 - 40
		< 40
		NOAA Bathymetry (DREDGING REACH EXTENT)
		0 - 10 10 - 15 15 - 20 20 - 25 25 - 30 30 - 50

NOTES:

- HORIZONTAL COORDINATES ARE REFERENCED TO TEXAS STATE PLANE COORDINATE SYSTEM, SOUTH CENTRAL ZONE NAD83 US SURVEY FEET.
- ELEVATIONS ARE REFERENCED TO MEAN LOWER LOW TIDE (MLLW) DATUM.
- THIS PROJECT WAS DESIGNED BY THE GALVESTON DISTRICT OF THE U.S. ARMY CORPS OF ENGINEERS. THE INITIALS AND SIGNATURES AND REGISTRATION DESIGNATIONS OF INDIVIDUALS APPEAR ON THESE PROJECT DOCUMENTS WITHIN THE SCOPE OF THEIR EMPLOYMENT AS REQUIRED BY ER1110-18152.
- THE INFORMATION DEPICTED ON THIS SURVEY MAP REPRESENTS THE RESULTS OF SURVEYS MADE ON THE DATES INDICATED AND CAN ONLY BE CONSIDERED AS INDICATING THE GENERAL CONDITIONS EXISTING AT THAT TIME. THESE CONDITIONS ARE SUBJECT TO RAPID CHANGE DUE TO SHOALING EVENTS. A PRUDENT MARINER SHOULD NOT RELY EXCLUSIVELY ON THE INFORMATION PROVIDED HERE. REQUIRED BY 33 CFR 209.325
- FOR THE MOST UP TO DATE INFORMATION PLEASE CHECK OUR WEBSITE AT: [HTTP://WWW.SWG.USACE.ARMY.MIL/MISSIONS/NAVIGATION/HYDROGRAPHIC/SURVEYS/](http://www.swg.usace.army.mil/missions/navigation/hydrographic/surveys/)
- NOAA BATHYMETRY CONTOURS PRODUCED FROM HISTORIC BATHYMETRIC (HYDROGRAPHIC) SURVEYS CONDUCTED BY THE NOAA NATIONAL OCEAN SERVICE/COAST SURVEY, AVAILABLE FROM THE NATIONAL GEOPHYSICAL DATA CENTER. SURVEYS VARY AS TO SOUNDING DENSITY, ACCURACY OF DEPTH, ACCURACY OF NAVIGATION, ZERO DATUM, DATE OF SURVEY AND TYPE OF INSTRUMENTATION.



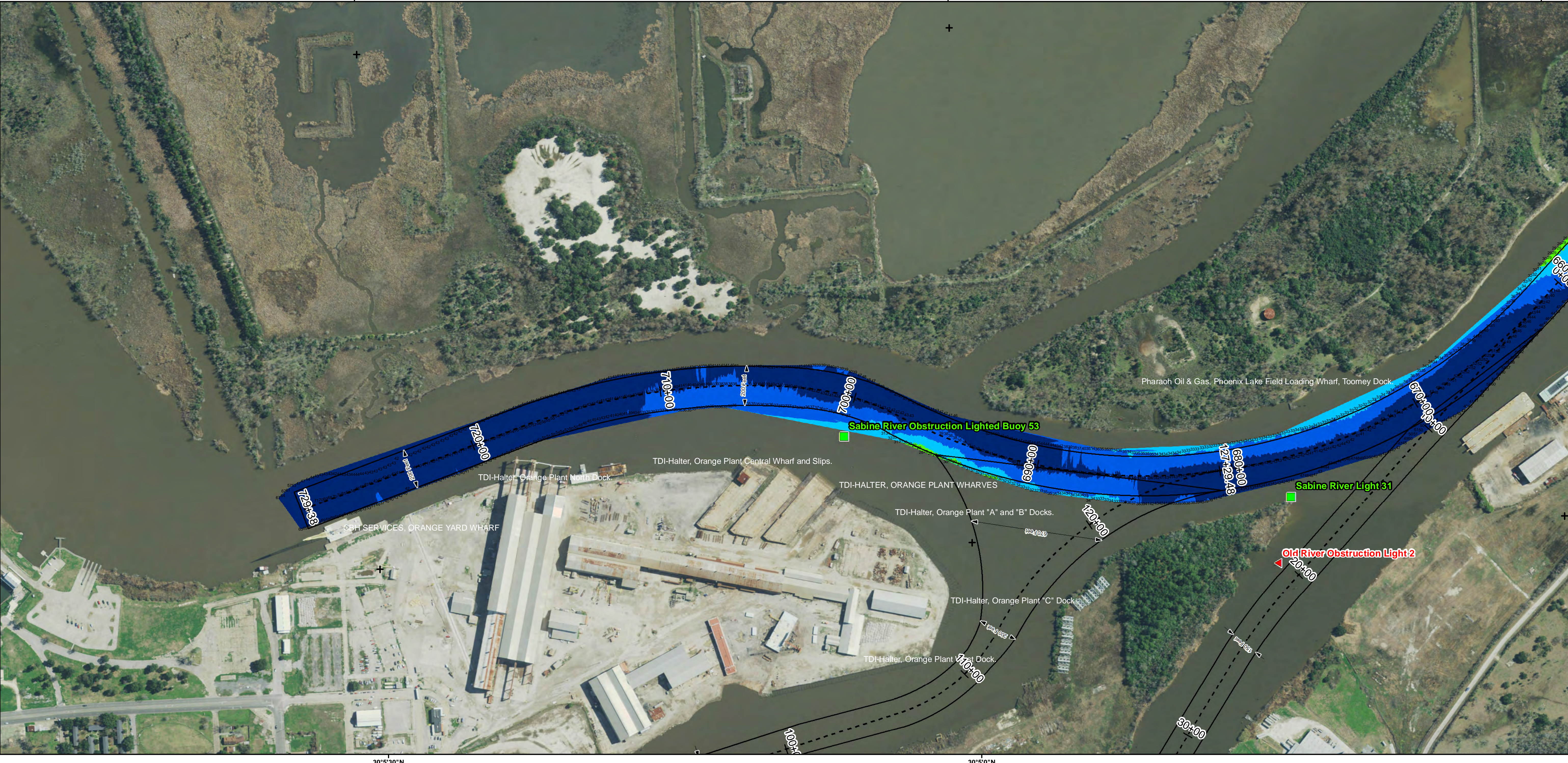
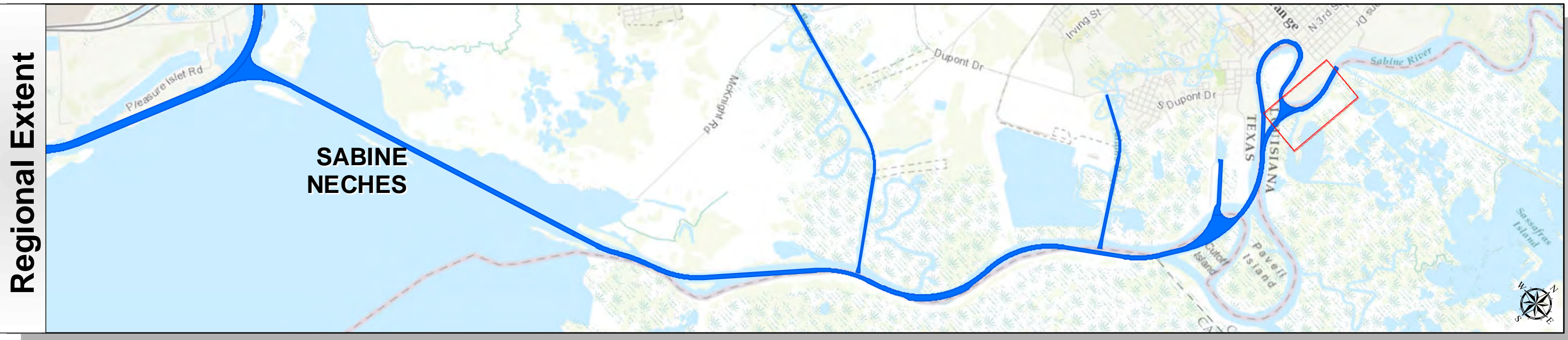
Service Layer Credits: Sources: Esri, HERE, DeLorme, Intermap, increment P Corp., GEBCO, USGS, FAO, NPS, NRCAN, GeoBase, IGN, Kadaster NL, Ordnance Survey, Esri Japan, METI, Esri China (Hong Kong), swisstopo, MapmyIndia, © OpenStreetMap contributors, and the GIS User Community  
 Esri, DeLorme, GEBCO, NOAA NGDC, and other contributors  
 Source: Esri, DigitalGlobe, GeoEye, Earthstar Geographics, CNES/Airbus DS, USDA, USGS, AeroGRID, IGN, and the GIS User Community

Coordinate System: NAD 1983 StatePlane Texas South Central FIPS 4204 Feet Projection: Lambert Conformal Conic / Datum: North American 1983
Dredging Reach Extent 0 0.5 1 Miles
Hydrographic Survey Extent 0 155 310 620 Feet

**HYDROGRAPHIC SURVEY**  
 U.S. ARMY ENGINEER DISTRICT  
 CORPS OF ENGINEERS  
 GALVESTON, TEXAS  
 Orange Truning Basin to Highway 90 Bridge  
**Station: 623+63.09 to 729+38.15**  
**SABINE NECHES**  
 PORT ARTHUR, TEXAS



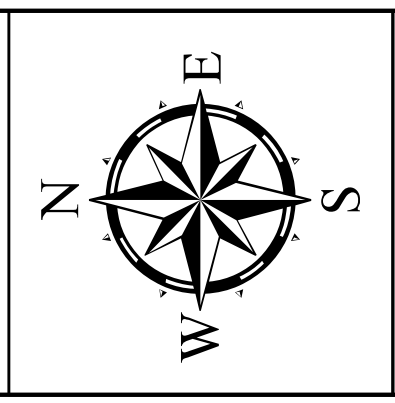
# Sabine Neches Waterway: Orange Truning Basin to Highway 90 Bridge



Channel Features	Aids to Navigation	MLLW
— Channel Toe	★ Lights	0 - 10
- - - Channel Center Line	▲ Red Side Aids	10 - 20
— Channel Station Lines	■ Green Side Aids	20 - 24
↔ Channel Dimensions	◆ Mooring Buoy	24 - 26
		26 - 28
		28 - 31
		31 - 35
		35 - 40
		< 40
		NOAA Bathymetry (DREDGING REACH EXTENT)
		0 - 10
		10 - 15
		15 - 20
		20 - 25
		25 - 30
		30 - 50

NOTES:  
 1. HORIZONTAL COORDINATES ARE REFERENCED TO TEXAS STATE PLANE COORDINATE SYSTEM, SOUTH CENTRAL ZONE NAD83 US SURVEY FEET.  
 2. ELEVATIONS ARE REFERENCED TO MEAN LOWER LOW TIDE (MLLW) DATUM.  
 3. THIS PROJECT WAS DESIGNED BY THE GALVESTON DISTRICT OF THE U.S. ARMY CORPS OF ENGINEERS. THE INITIALS AND SIGNATURES AND REGISTRATION DESIGNATIONS OF INDIVIDUALS APPEAR ON THESE PROJECT DOCUMENTS WITHIN THE SCOPE OF THEIR EMPLOYMENT AS REQUIRED BY ER1110-1-8152.

4. THE INFORMATION DEPICTED ON THIS SURVEY MAP REPRESENTS THE RESULTS OF SURVEYS MADE ON THE DATES INDICATED AND CAN ONLY BE CONSIDERED AS INDICATING THE GENERAL CONDITIONS EXISTING AT THAT TIME. THESE CONDITIONS ARE SUBJECT TO RAPID CHANGE DUE TO SHOALING EVENTS. A PRUDENT MARINER SHOULD NOT RELY EXCLUSIVELY ON THE INFORMATION PROVIDED HERE. REQUIRED BY 33 CFR 209.325  
 5. FOR THE MOST UP TO DATE INFORMATION PLEASE CHECK OUR WEBSITE AT: [HTTP://WWW.SWG.USACE.ARMY.MIL/MISSIONS/NAVIGATION/HYDROGRAPHICS/SURVEYS/](http://www.swg.usace.army.mil/missions/navigation/hydrographics/surveys/)  
 6. NOAA BATHYMETRY CONTOURS PRODUCED FROM HISTORIC BATHYMETRIC (HYDROGRAPHIC) SURVEYS CONDUCTED BY THE NOAA NATIONAL OCEAN SERVICE COAST SURVEY, AVAILABLE FROM THE NATIONAL GEOPHYSICAL DATA CENTER. SURVEYS VARY AS TO SOUNDING DENSITY, ACCURACY OF DEPTH, ACCURACY OF NAVIGATION, ZERO DATUM, DATE OF SURVEY AND TYPE OF INSTRUMENTATION.



Service Layer Credits: Sources: Esri, HERE, DeLorme, Intermap, increment P Corp., GEBCO, USGS, FAO, NPS, NRCAN, GeoBase, IGN, Kadaster NL, Ordnance Survey, Esri Japan, METI, Esri China (Hong Kong), swisstopo, MapmyIndia, © OpenStreetMap contributors, and the GIS User Community  
 Source: Esri, DigitalGlobe, GeoEye, Earthstar Geographics, CNES/Airbus DS, USDA, USGS, AeroGRID, IGN, and the GIS User Community

Coordinate System: NAD 1983 StatePlane Texas South Central FIPS 4204 Feet Projection: Lambert Conformal Conic/Datum: North American 1983
Dredging Reach Extent 0 0.5 1 Miles
Hydrographic Survey Extent 0 187.5 375 750 Feet

Survey Date(s): 04 September 2017	Authorized Depth: -31ft.
Page: 41 of 72	Side Slope Ratio: (Rise : Run)
Map:	Additional Imagery: © DigitalGlobe Inc.
Scale: 1:3,000	Print Date: 9/7/2017
Mapped by: M3AOXPAC	
Additional Info :	

**HYDROGRAPHIC SURVEY**  
 U.S. ARMY ENGINEER DISTRICT  
 CORPS OF ENGINEERS  
 GALVESTON, TEXAS  
 Orange Truning Basin to Highway 90 Bridge  
**Station: 623+63.09 to 729+38.15**  
**SABINE NECHES**  
 PORT ARTHUR, TEXAS