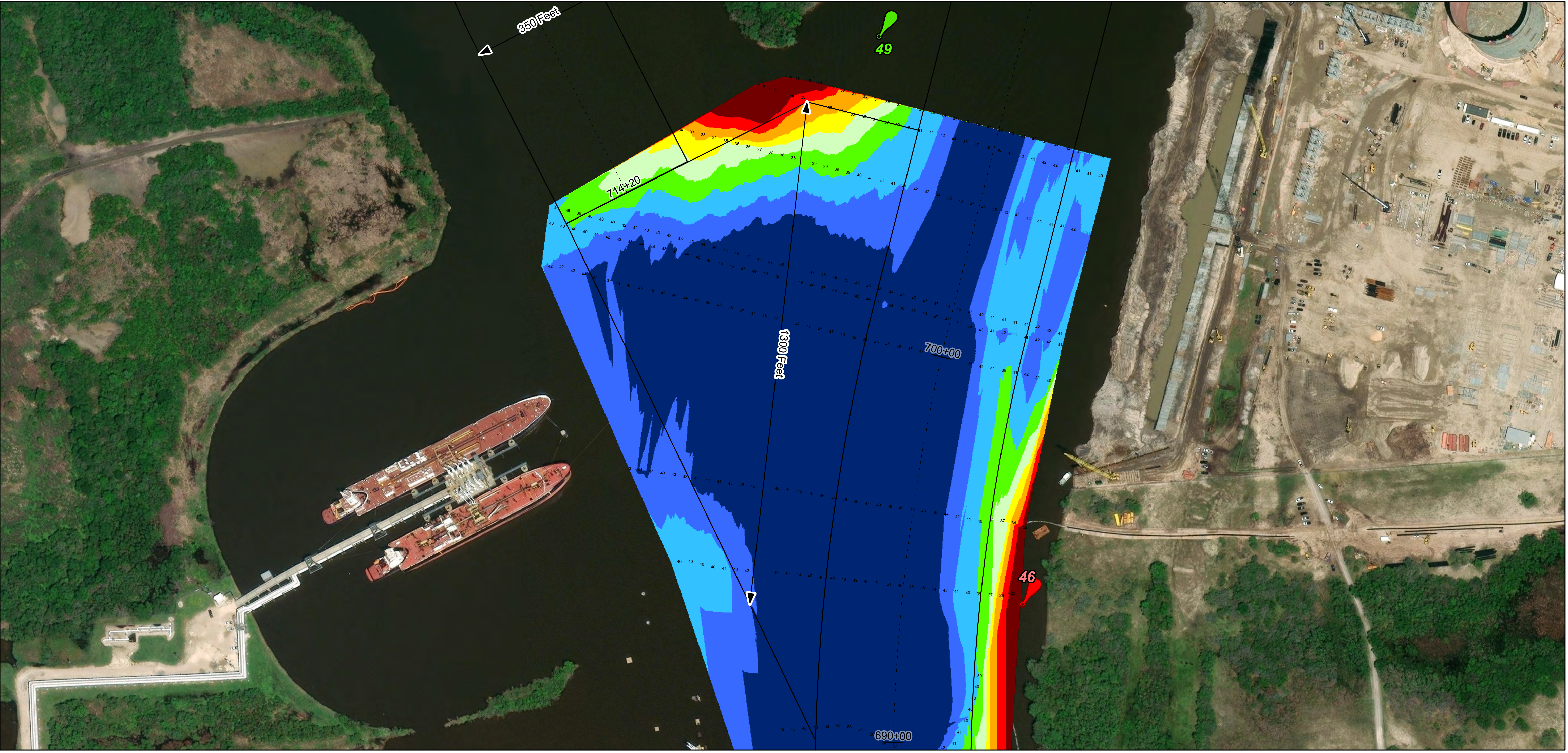
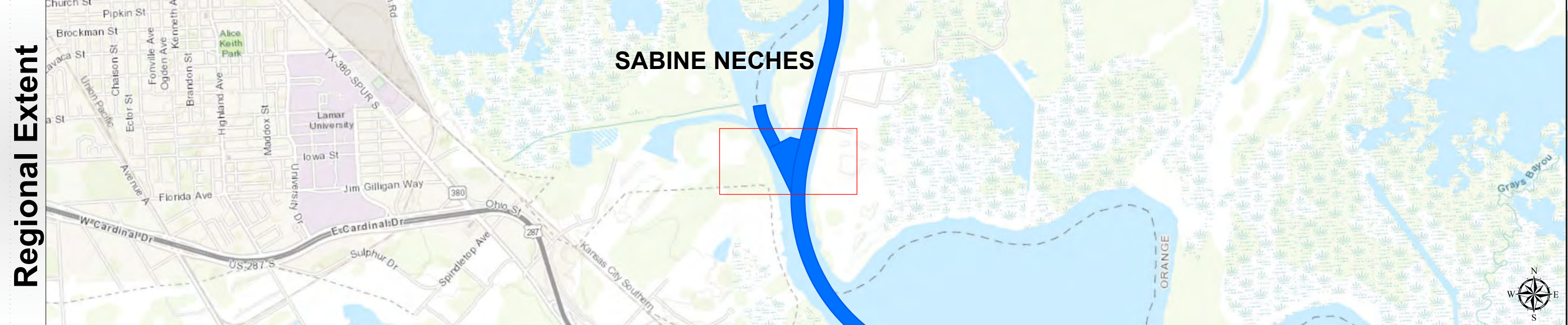


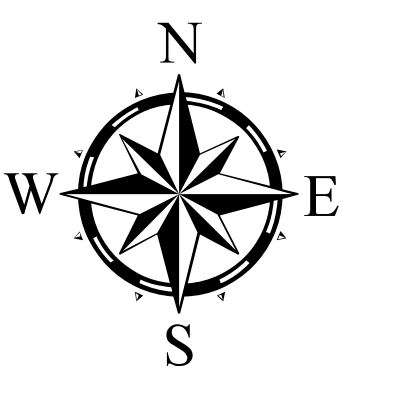
Sabine Neches Waterway: Turning Basin at Mile 40.3



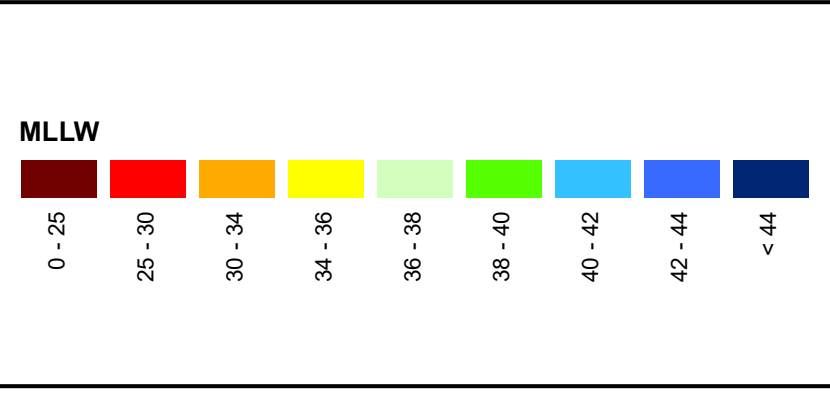
U.S. Army Corps of Engineers
Galveston District



Latest Survey Collection Date: 03 March 2025	Authorized Depth: -40ft.
Document Page: 1 of 1	Width Range: 920ft to 1595ft
Scale: 1:1,500	Side Slope Ratio: (Rise : Run)
Mapped by: M3AOXPAC	PDF Print Date: 3/12/2025
Additional Imagery info:	
Website Index Number: 59	

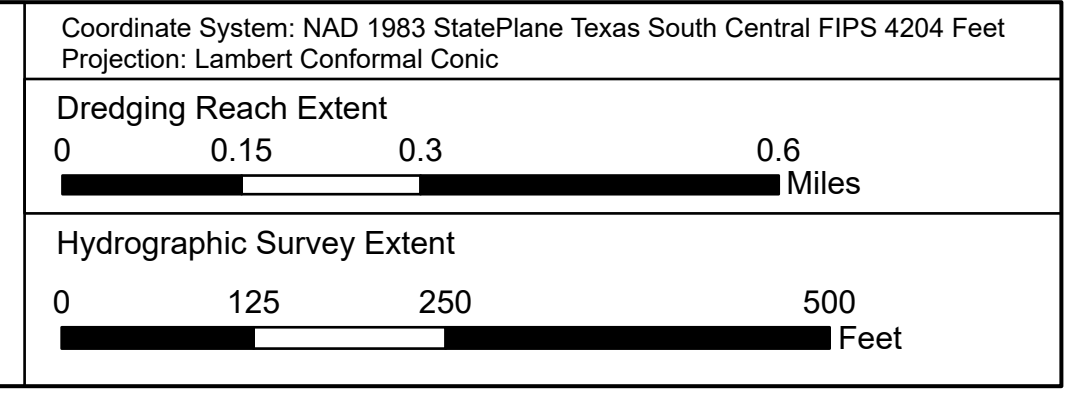


Channel Features	Aids to Navigation
- - - Channel Center Line	Green Side Aids
— Channel Toe	Red Side Aids
↔ Channel Dimensions	Lights



NOTES:
 1. Horizontal coordinates are referenced to Texas state plane coordinate system, south central zone nad83 us survey feet.
 2. Elevations are referenced to mean lower low tide (MLLW) datum.
 3. This project was designed by the Galveston District of the U.S. Army Corps of Engineers. The initials and signatures and registration designations of individuals appear on these project documents within the scope of their employment as required by 47CFR 117.11-1, 117.12.
 4. The information depicted on this survey map represents the results of surveys made on the dates indicated and can only be considered as indicating the general conditions existing at that time. These conditions are subject to rapid change due to shoaling events. A prudent mariner should not rely exclusively on the information provided here. Required by 33 CFR 209.225.
 5. For the most up to date information please check our website at: <http://www.svg.usace.army.mil/Missions/Navigation/HydrographicSurveys/>
 Service Layer Credits: World Topographic Map: Texas Parks & Wildlife, Esri, HERE, Garmin, INCREMENT P, USGS, METINASA, EPA, USDA
 World Imagery: Maxar, Microsoft
 World Imagery: Maxar
 World Ocean Base: Esri, GEBCO, Garmin, NaturalVue

Additional Combined Survey Dates and Stationing:
 Combined survey dates 20240403_CS; 20250303_CS_690P00_706P00



HYDROGRAPHIC SURVEY
 U.S. ARMY ENGINEER DISTRICT
 CORPS OF ENGINEERS
 GALVESTON, TEXAS

Station: 690+20 to 705+50
SABINE NECHES
 Turning Basin at Mile 40.3