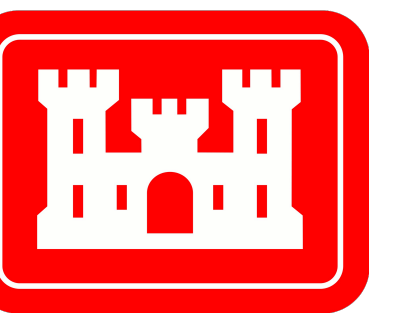
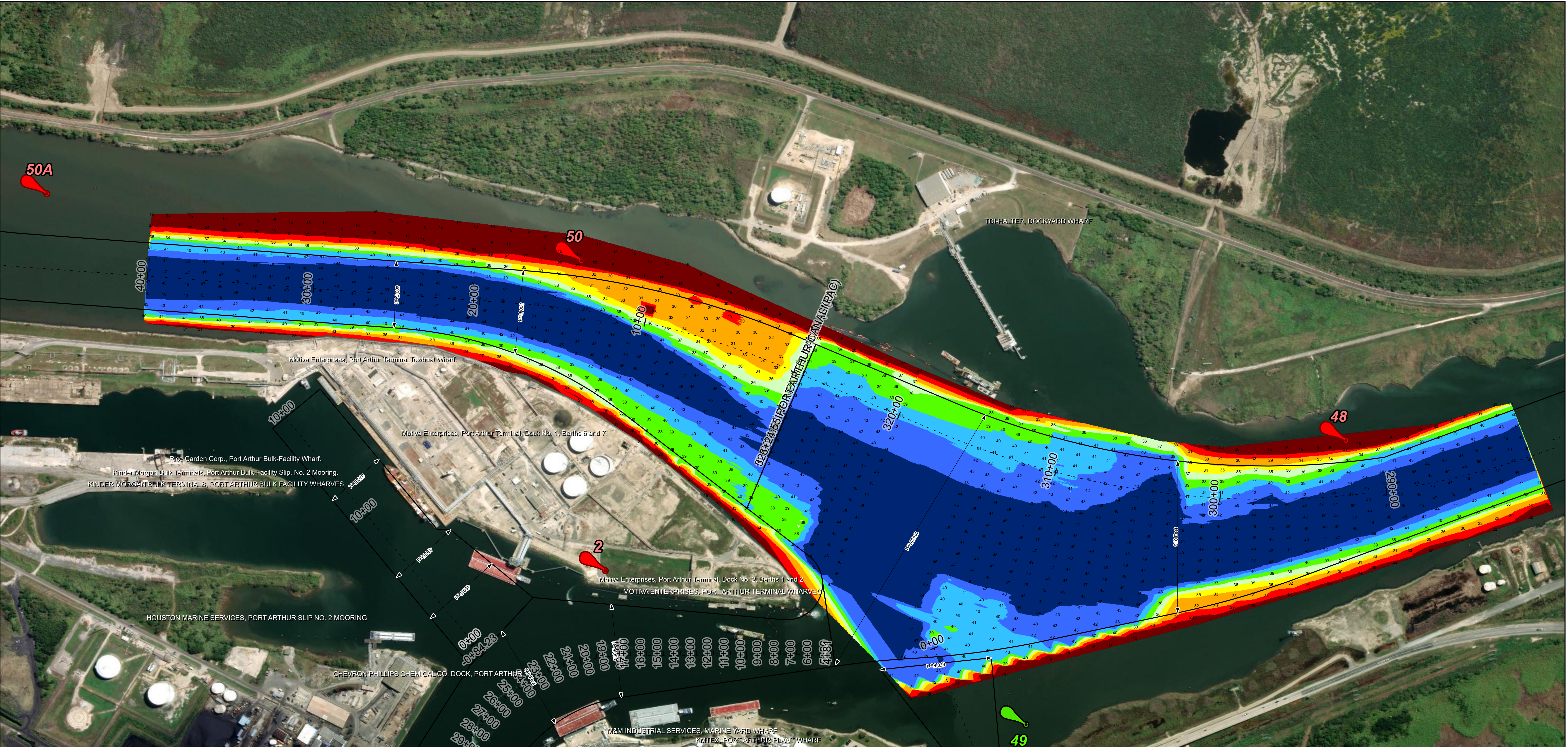
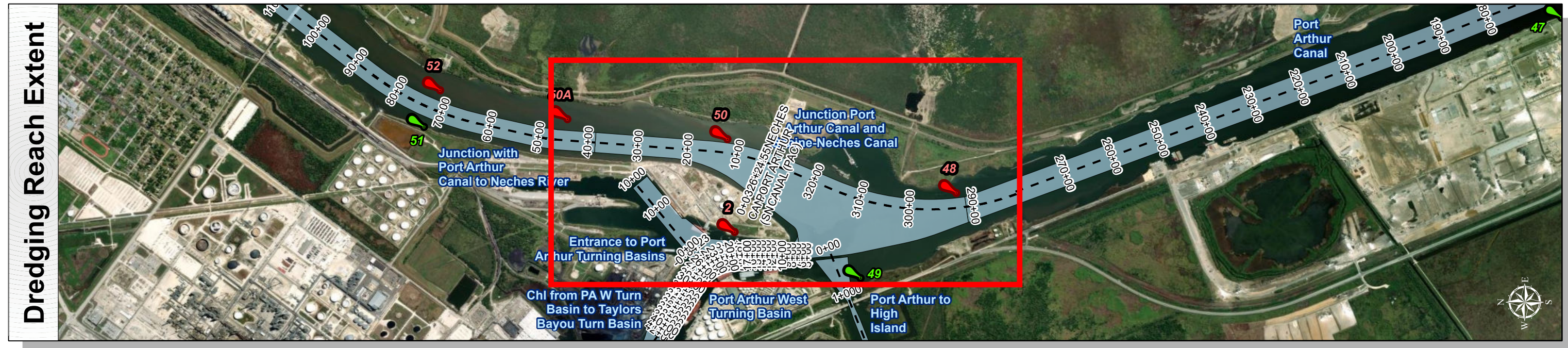


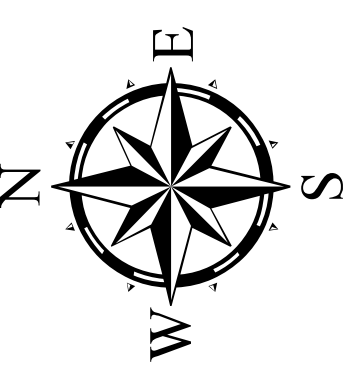
# Sabine Neches Waterway: Junction Port Arthur Canal and Sabine-Neches Canal



U.S. Army Corps of Engineers  
Galveston District



Latest Survey Collection Date: 12 March 2025	Authorized Depth: -40ft.
Document Page: 1 of 1	Side Slope Ratio: (Rise : Run)
Scale: 1:3,500	PDF Print Date: 3/31/2025
Mapped by: M3AOXPAC	
Website Index Number: 23	
Additional Imagery info:	



**Channel Features**

- Channel Center Line
- Channel Toe
- Channel Dimensions

**Aids to Navigation**

- Green Side Aids
- Red Side Aids
- Lights

**Depth Contours (MLLW)**

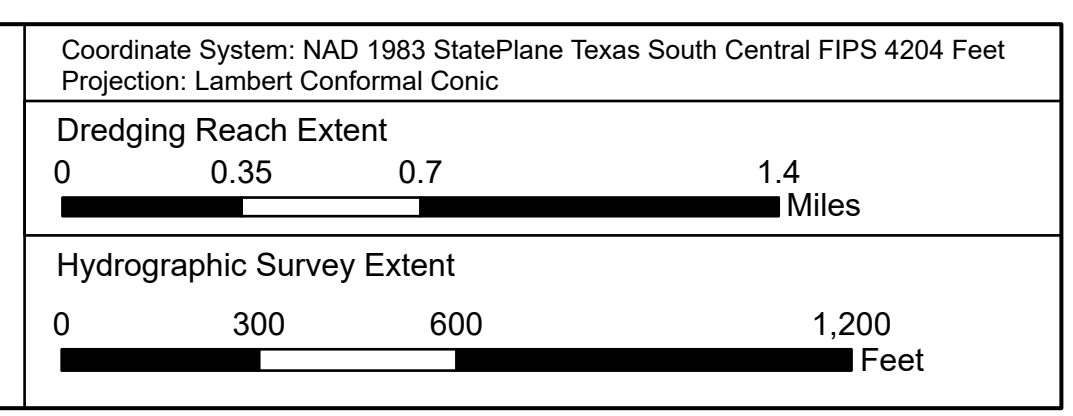
- 0 - 25
- 25 - 30
- 30 - 34
- 34 - 36
- 36 - 38
- 38 - 40
- 40 - 42
- 42 - 44
- < 44

**NOTES:**

- Horizontal coordinates are referenced to Texas state plane coordinate system, south central zone nad83 us survey feet.
- Elevations are referenced to mean lower low tide (MLLW) datum.
- This project was designed by the Galveston District of the U.S. Army Corps of Engineers. The initials and signatures and registration designations of individuals appear on these project documents within the scope of their employment as required by 47 CFR 111.111-1.8132.
- The information depicted on this survey map represents the results of surveys made on the dates indicated and can only be considered as indicating the general conditions existing at that time. These conditions are subject to rapid change due to shoaling events. A prudent mariner should not rely exclusively on the information provided here. Required by 33 CFR 209.325.
- For the most up to date information please check our website at: <http://www.svg.usace.army.mil/Missions/Navigation/HydrographicSurveys/>

Service Layer Credits: World Topographic Map, Texas Parks & Wildlife, Esri, HERE, Garmin, USGS, NGA, EPA, USDA, NPS, World Imagery, Maxar, World Ocean Base, Esri, GEBCO, Garmin, NaturalVue

**Additional Combined Survey Dates and Stationing:**  
Combined survey dates 20250311\_PR\_CS\_57P693\_62P700; 20250312\_PR\_62P700\_66P235



**HYDROGRAPHIC SURVEY**  
U.S. ARMY ENGINEER DISTRICT  
CORPS OF ENGINEERS  
GALVESTON, TEXAS

**Station: 290+00 to 40+00**  
**SABINE NECHES**  
Junction Port Arthur Canal and Sabine-Neches Canal