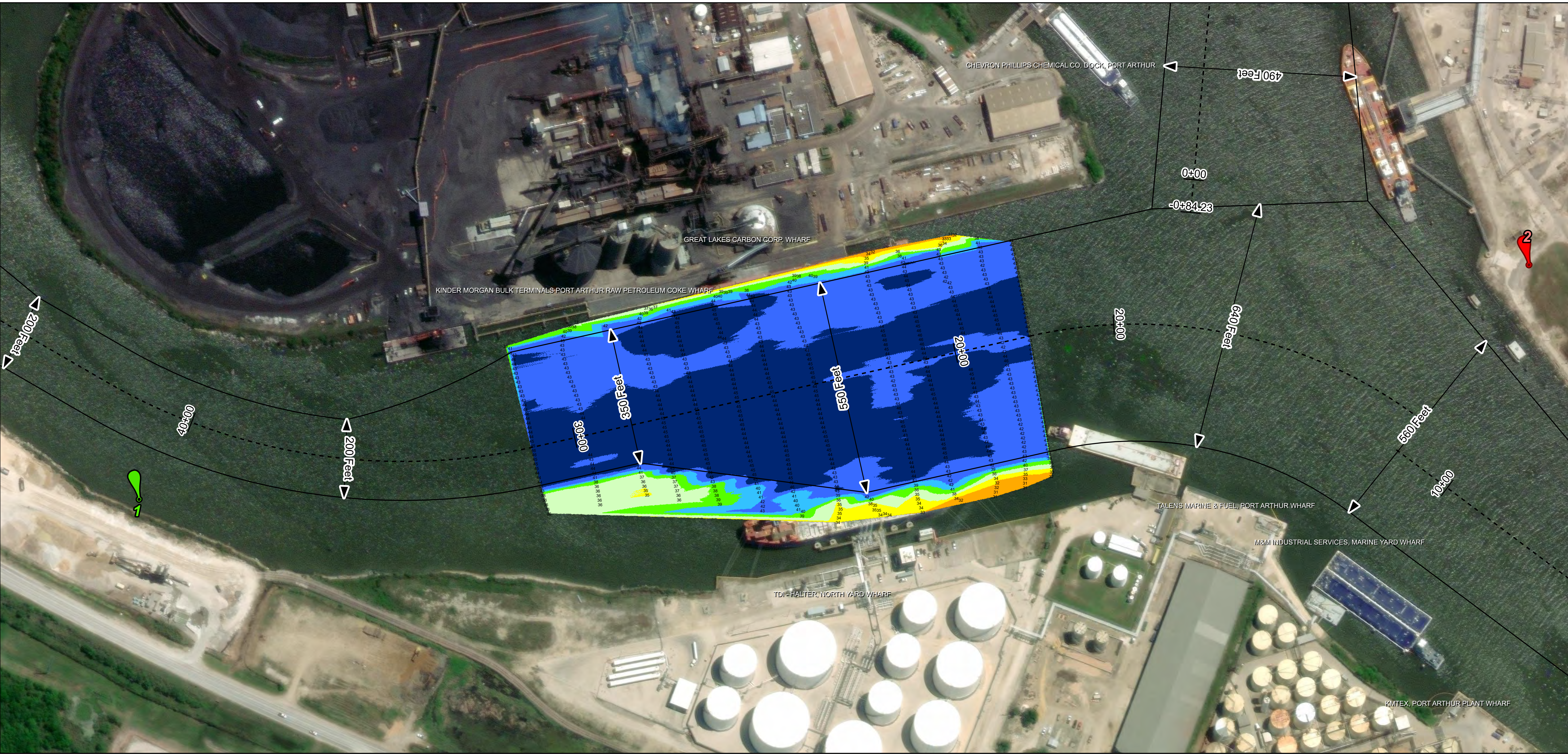
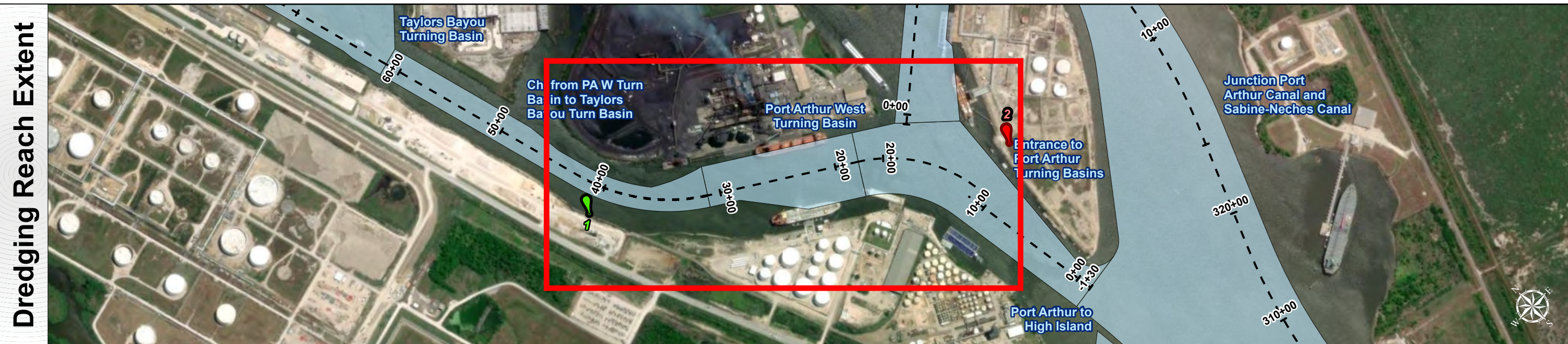
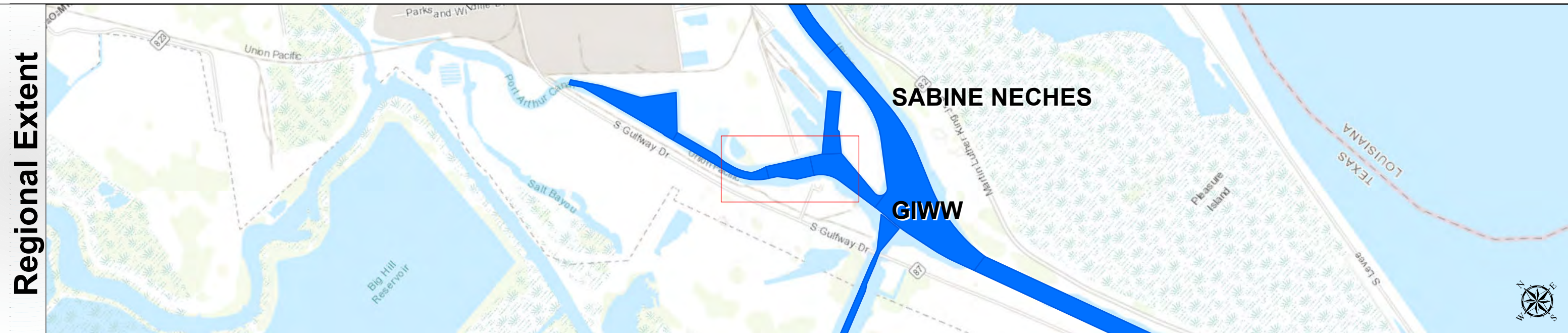


Sabine Neches Waterway: Port Arthur West Turning Basin



U.S. Army Corps of Engineers
Galveston District



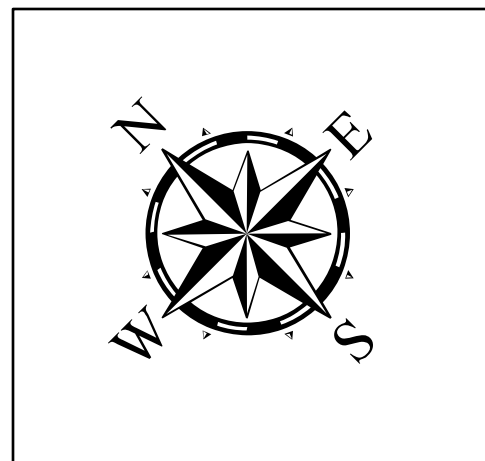
Channel Features	Aids to Navigation
Channel Center Line	Green Side Aids
Channel Toe	Red Side Aids
Channel Station Lines	Lights
Channel Dimensions	

NOTES: 1. Horizontal coordinates are referenced to Texas state plane coordinate system, south central zone nad83 us survey feet. 2. Elevations are referenced to mean lower low tide (MLLW) datum. 3. This project was designed by the Galveston District of the U.S. Army Corps of Engineers. The initials and signatures and registration designations of individuals appear on these project documents within the scope of their employment as required by 47 CFR 111.1-111.12. 4. The information depicted on this survey map represents the results of surveys made on the dates indicated and can only be considered as indicating the general conditions existing at that time. These conditions are subject to rapid change due to shoaling events. A prudent mariner should not rely exclusively on the information provided here. Required by 33 CFR 200.325. 5. For the most up to date information please check our website at: http://www.svg.usace.army.mil/Missions/Navigation/HydrographicSurveys/
Service Layer Credits: World Topographic Map: Texas Parks & Wildlife, Esri, HERE, Garmin, INCREMENT P, USGS, METI/NASA, EPA, USDA World Imagery: Maxar, Microsoft World Imagery: Maxar World Ocean Base: Esri, GEBCO, Garmin, NaturalVue

Additional Combined Survey Dates and Stationing: COMB_SURV_INFO_HERE

Coordinate System: NAD 1983 StatePlane Texas South Central FIPS 4204 Feet Projection: Lambert Conformal Conic
Dredging Reach Extent 0 0.15 0.3 0.6 Miles
Hydrographic Survey Extent 0 125 250 500 Feet

Latest Survey Collection Date: 30 November 2023	Authorized Depth: -40ft.
Document Page: 1 of 1	Side Slope Ratio: (Rise : Run)
Scale: 1"=1,500'	PDF Print Date: 12/1/2023
Mapped by: M3AOXPAC	
Additional Imagery info:	



HYDROGRAPHIC SURVEY
U.S. ARMY ENGINEER DISTRICT
CORPS OF ENGINEERS
GALVESTON, TEXAS

Station: 22+10.2=17+97 to 31+09.80
SABINE NECHES RIVER
22+10.2=17+97 to 31+09.80