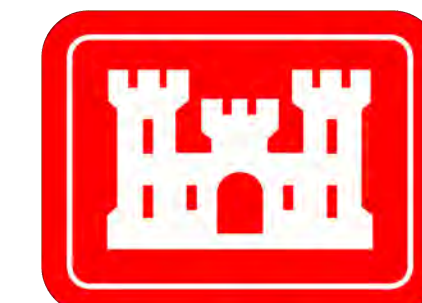
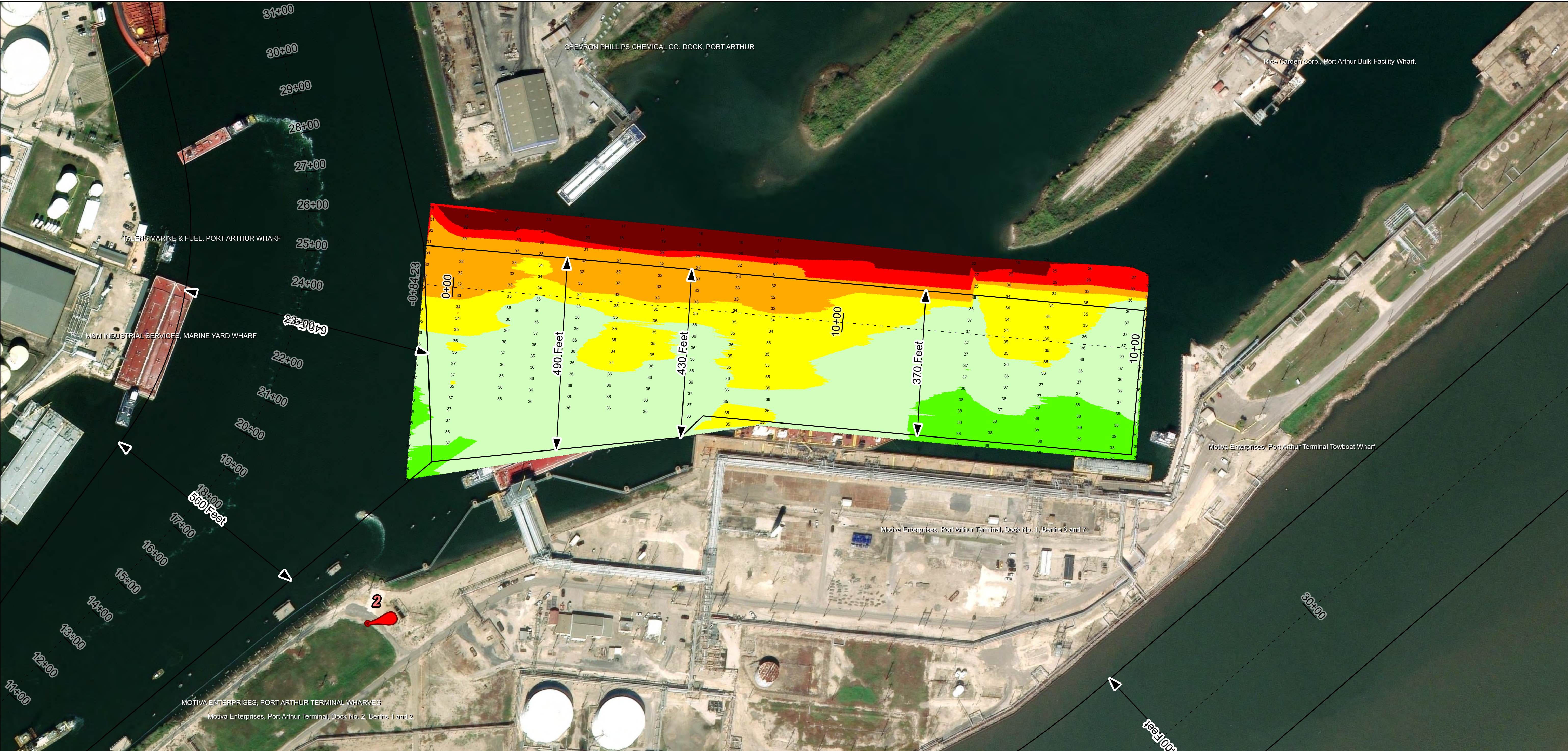
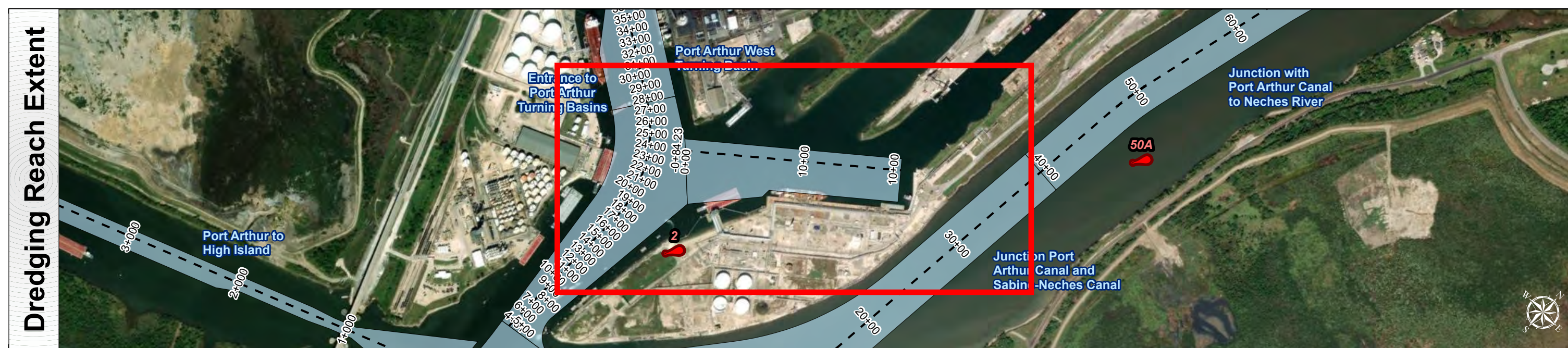
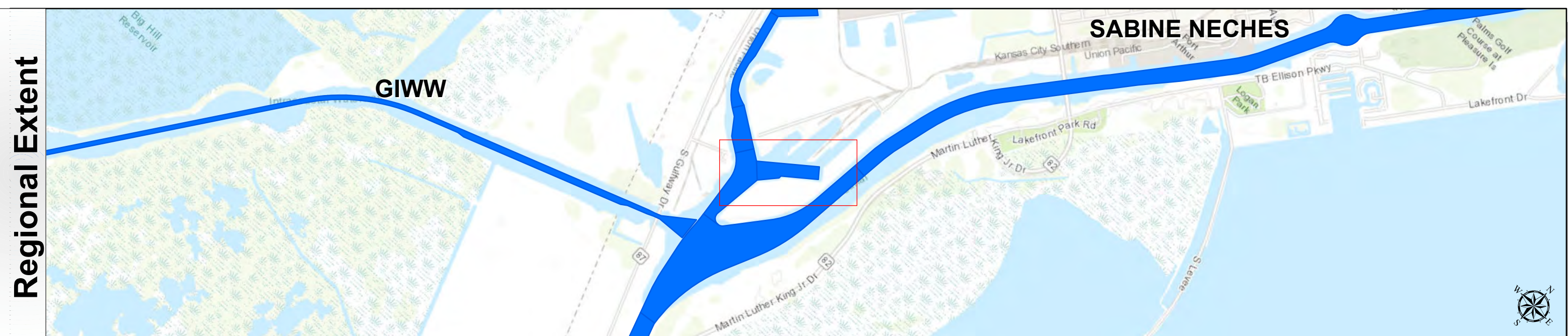


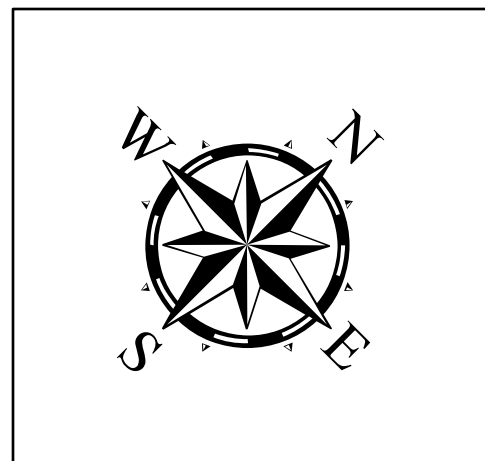
Sabine Neches Waterway: Port Arthur East Turning Basin



U.S. Army Corps of Engineers
Galveston District



Latest Survey Collection Date: 12 March 2025	Authorized Depth: -40ft.
Document Page: 1 of 1	Side Slope Ratio: (Rise : Run)
Scale: 1:1,500	Website Index Number: 68
Mapped by: M3AOXPAC	PDF Print Date: 3/27/2025
Additional Imagery info:	



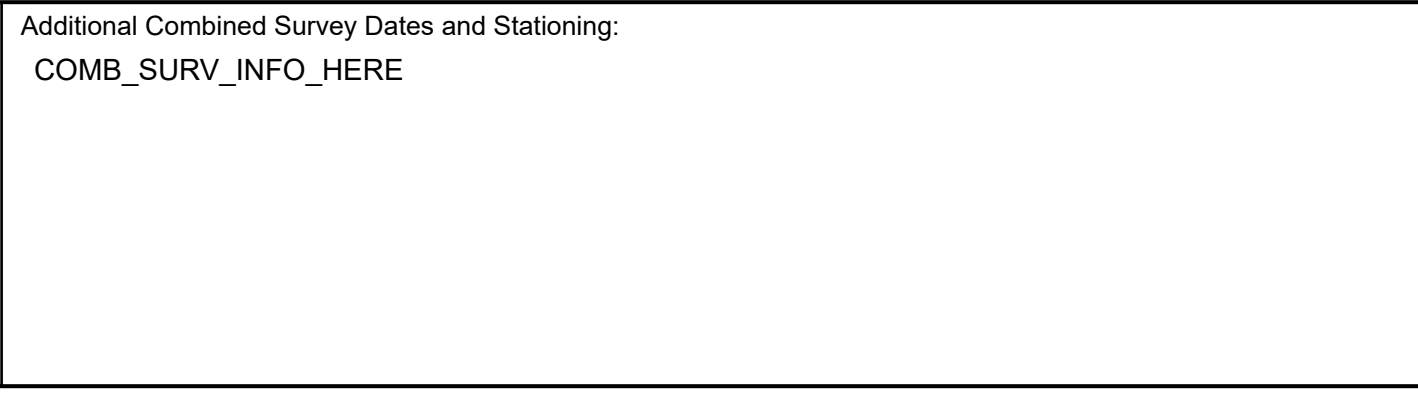
HYDROGRAPHIC SURVEY
U.S. ARMY ENGINEER DISTRICT
CORPS OF ENGINEERS
GALVESTON, TEXAS

Station: 0+00 to 17+65
SABINE NECHES
Port Arthur East Turning Basin

NOTES:

- Horizontal coordinates are referenced to Texas state plane coordinate system, south central zone nad83 us survey feet.
- Elevations are referenced to mean lower low tide (MLLW) datum.
- This project was designed by the Galveston District of the U.S. Army Corps of Engineers. The initials and signatures and registration designations of individuals appear on these project documents within the scope of their employment as required by er1110-6132.
- The information depicted on this survey map represents the results of surveys made on the dates indicated and can only be considered as indicating the general conditions existing at that time. These conditions are subject to rapid change due to shoaling events. A prudent mariner should not rely exclusively on the information provided here. Required by 33 CFR 209.225
- For the most up to date information please check our website at: <http://www.svg.usace.army.mil/Missions/Navigation/HydrographicSurveys/>

Service Layer Credits: World Topographic Map; Texas Parks & Wildlife; Esri, HERE, Garmin, INCREMENT P, USGS, METI/NASA, EPA, USDA, World Imagery; Maxar, Microsoft, World Imagery; Masar, World Ocean Base; Esri, GEBCO, Garmin, NaturalVue



Coordinate System: NAD 1983 StatePlane Texas South Central FIPS 4204 Feet
Projection: Lambert Conformal Conic