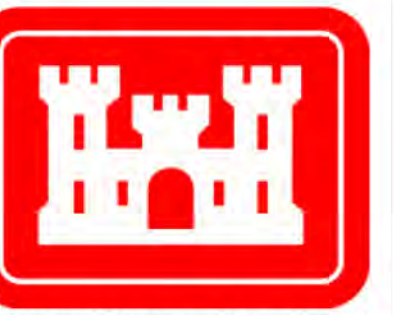


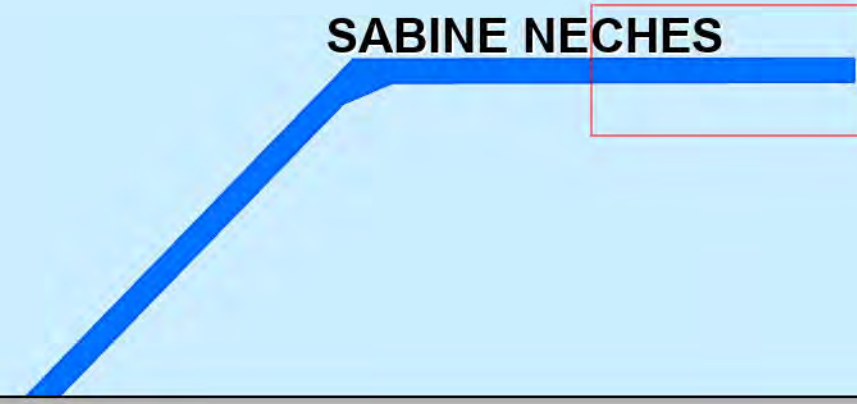
Sabine Neches Waterway: Sabine Bank Channel



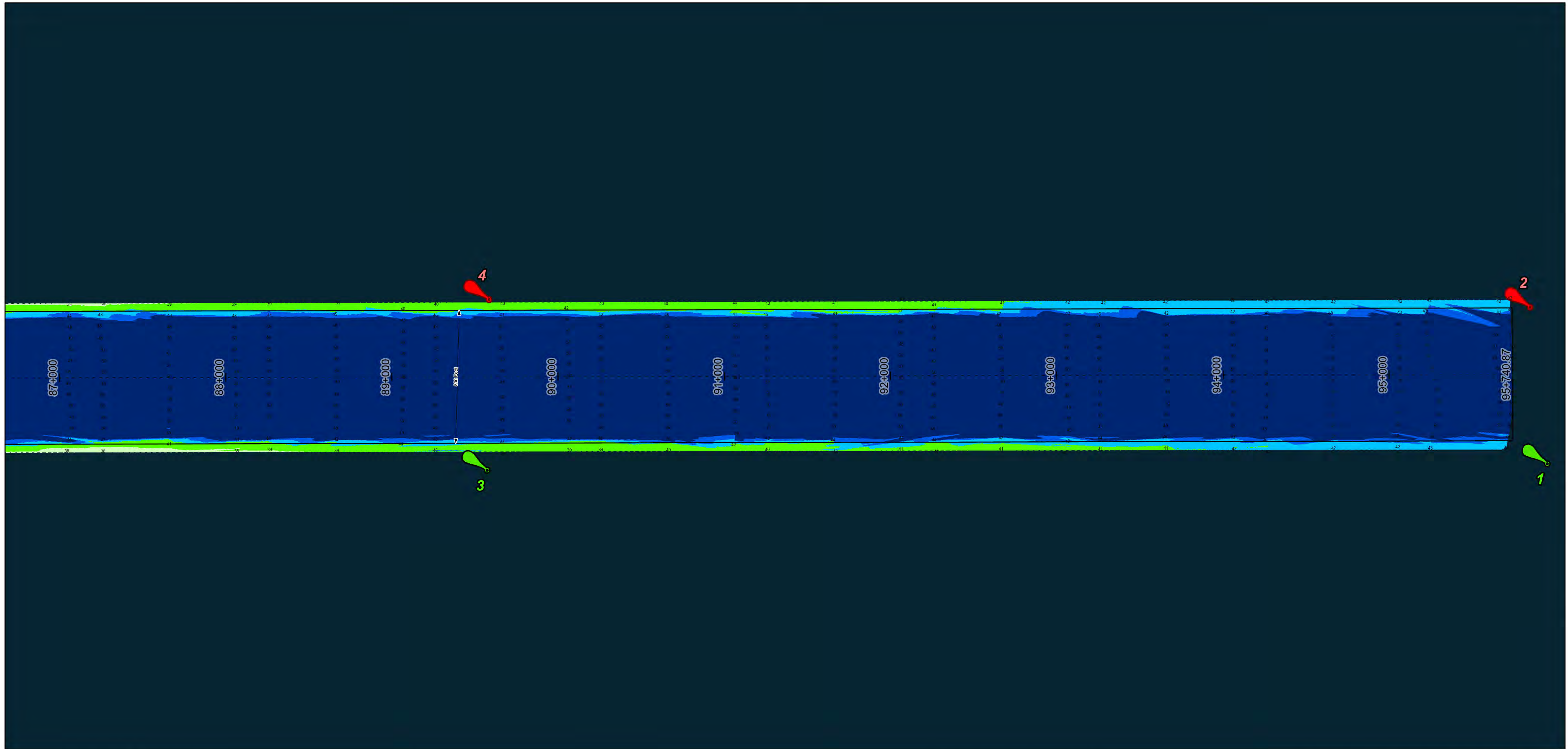
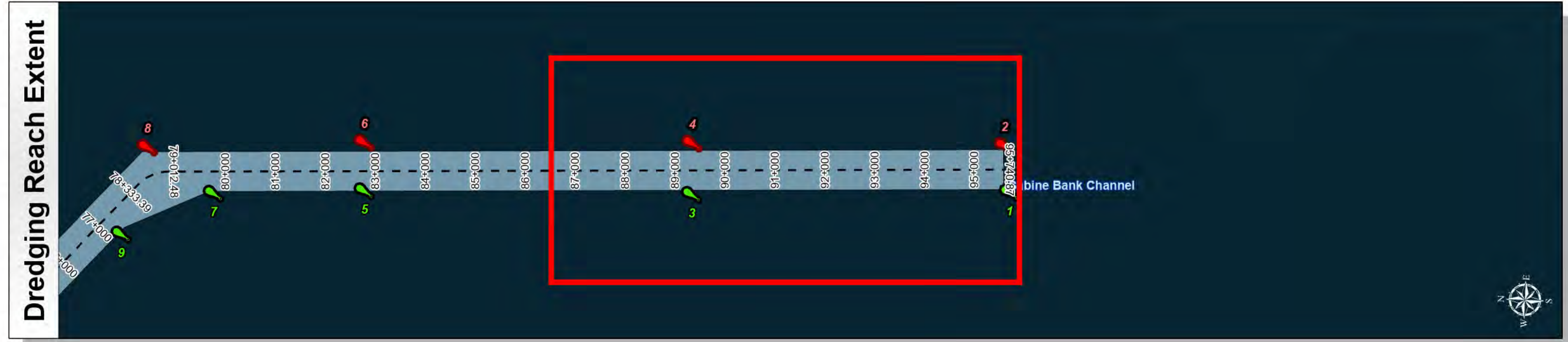
U.S. Army Corps of Engineers
Galveston District



Regional Extent



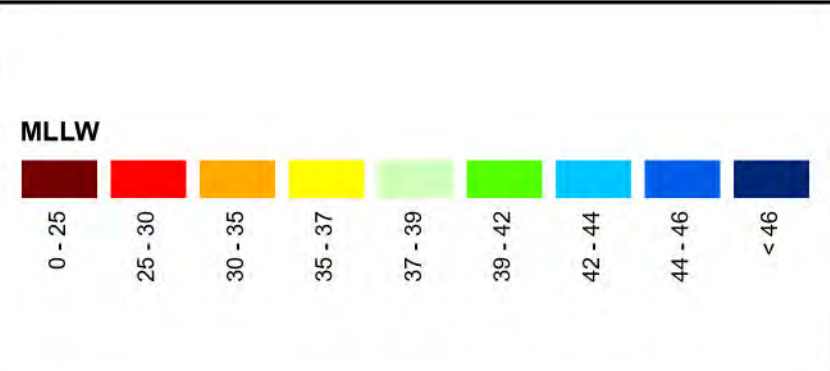
Dredging Reach Extent



Latest Survey Collection Date: 31 March 2025	Authorized Depth: -42ft.
Document Page: 1 of 9	Width Range: 800ft to 1260ft
Scale: 1:3,500	Side Slope Ratio: (Rise : Run)
Mapped by: m3odrmhg	PDF Print Date: 5/12/2025
Additional Imagery info:	

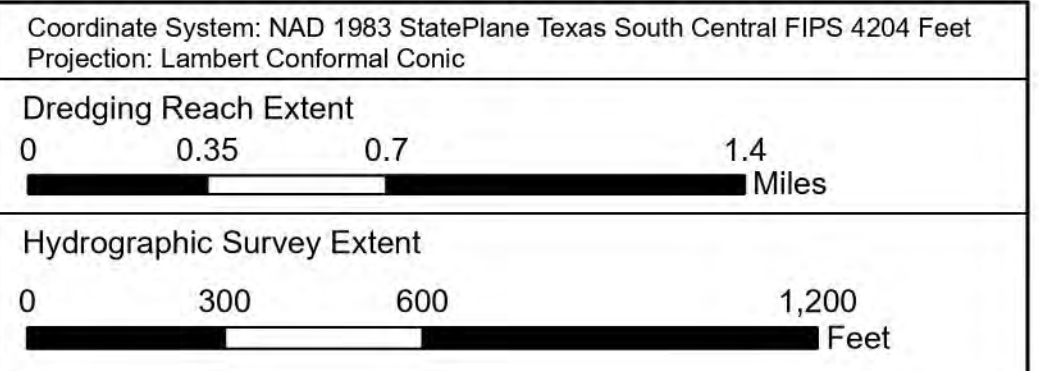


Channel Features	Aids to Navigation
Channel Center Line	Green Side Aids
Channel Toe	Red Side Aids
Channel Dimensions	Lights



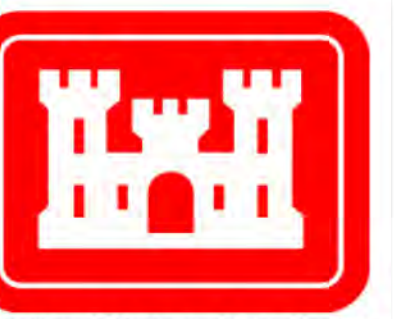
NOTES:
 1. Horizontal coordinates are referenced to Texas State Plane Coordinate System, South Central Zone NAD83 US Survey Feet.
 2. Elevations are referenced to Mean Lower Low Water (MLLW) datum.
 3. This project was designed by the Galveston District of the U.S. Army Corps of Engineers. The initials and signatures and registration designations of individuals appear on these project documents within the scope of their employment as required by 47 CFR 11.103-1, §11.102.
 4. The information depicted on this survey map represents the results of surveys made on the dates indicated and can only be considered as indicating the general conditions existing at that time. These conditions are subject to rapid change due to shoaling events. A prudent mariner should not rely exclusively on the information provided here. Required by 33 CFR 209.225.
 5. For the most up to date information please check our website at: <http://www.swg.usace.army.mil/Missions/Navigation/HydrographicSurveys/>
 Service Layer Credits: World Topographic Map: Texas Parks & Wildlife, Esri, HERE, Garmin, INCREMENT P, USGS, METI/NASA, NGA, EPA, USDA
 World Imagery: Maxar
 World Ocean Base: Esri, GEBCO, Garmin, NaturalVue

Additional Combined Survey Dates and Stationing:
 Combined survey dates 20240404_PR_M77P00_M117P72; 20240405_PR_M77P00_M39P430;
 20241107_PR_M63P000_M58P000; 20241123_PR_M47P000_M53P000;
 20241123_PR_M53P000_M58P000; 20250326_PR_M46P000_M39P430;
 20250326_PR_M83P000_M68P000

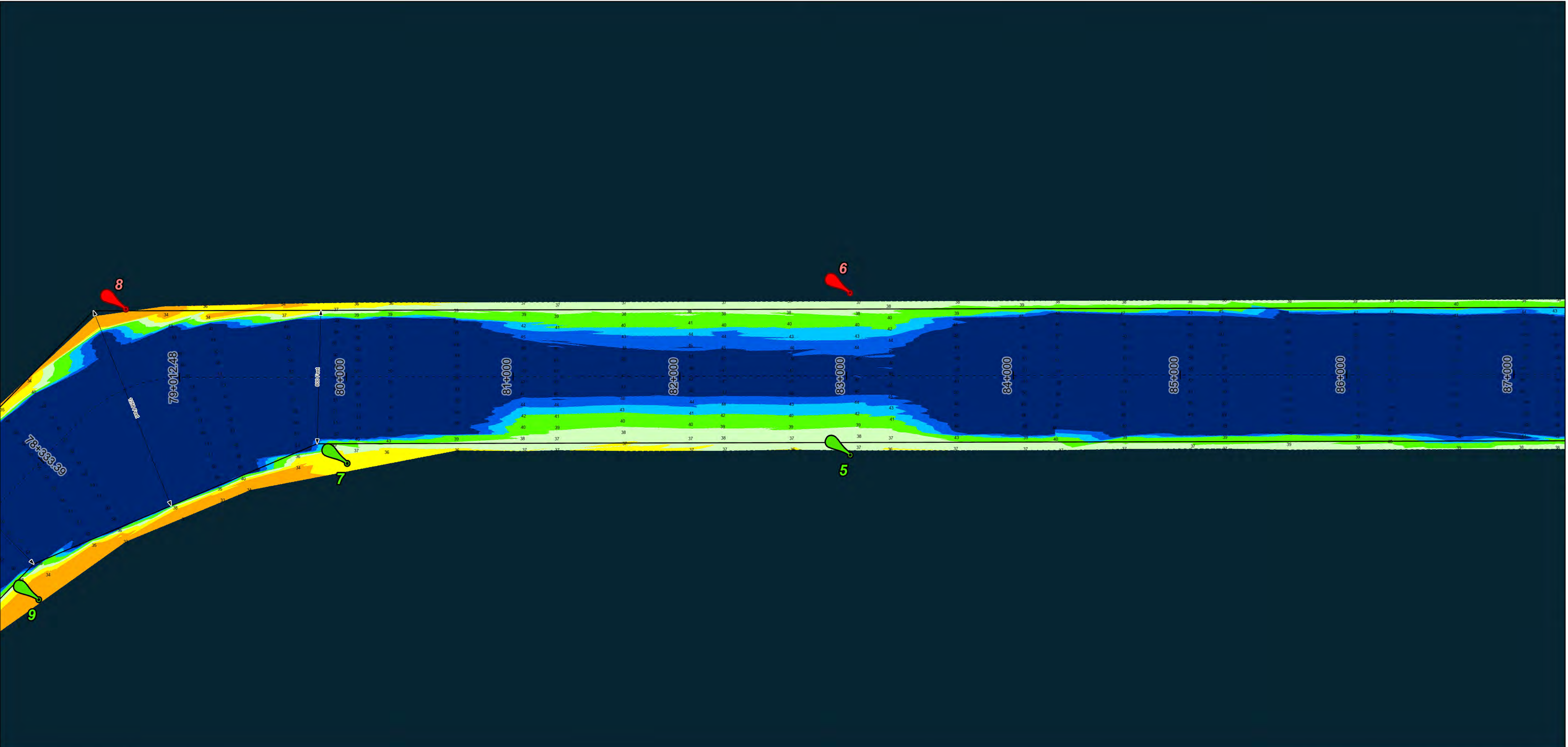
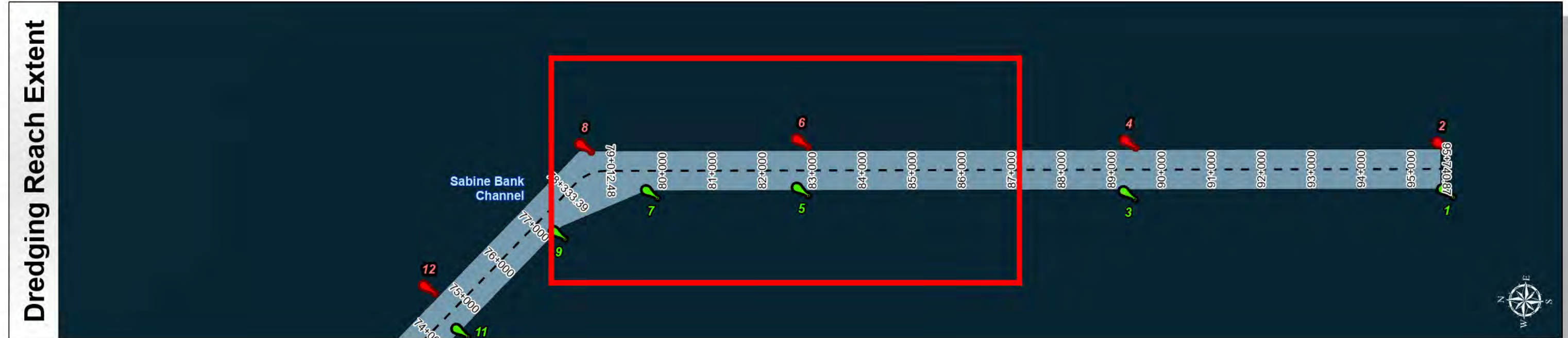
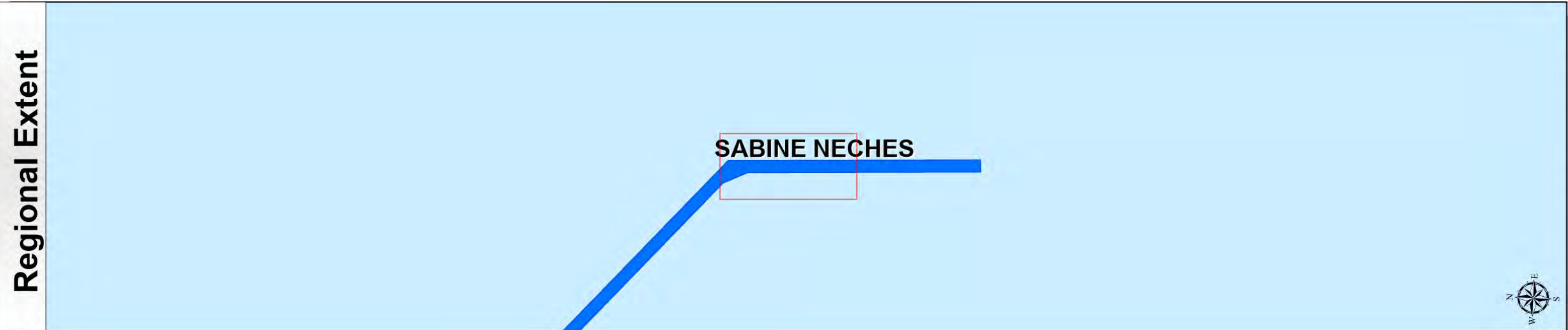


HYDROGRAPHIC SURVEY
 U.S. ARMY ENGINEER DISTRICT
 CORPS OF ENGINEERS
 GALVESTON, TEXAS
Station: 95+740.87 to 18+091.09
 SABINE NECHES
 Sabine Bank Channel

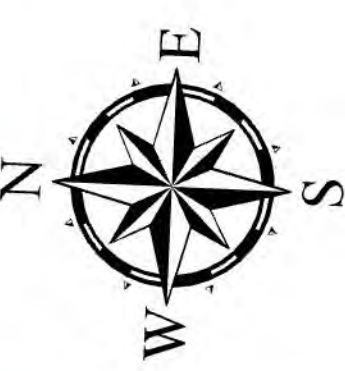
Sabine Neches Waterway: Sabine Bank Channel



U.S. Army Corps of Engineers
Galveston District



Latest Survey Collection Date: 31 March 2025	Authorized Depth: -42ft.
Document Page: 2 of 9	Width Range: 800ft to 1260ft
Scale: 1:3,500	Side Slope Ratio: (Rise : Run)
Mapped by: m3odnmhg	PDF Print Date: 5/12/2025
Additional Imagery info:	



Channel Features	Aids to Navigation
--- Channel Center Line	Green Side Aids
— Channel Toe	Red Side Aids
↔ Channel Dimensions	Lights

Depth (ft)	Color
0 - 25	Red
25 - 30	Orange
30 - 35	Yellow
35 - 37	Light Green
37 - 39	Green
39 - 42	Light Blue
42 - 44	Blue
44 - 46	Dark Blue
< 46	Black

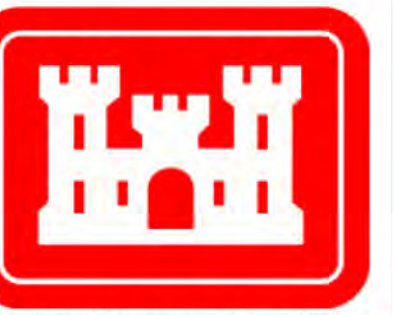
Additional Combined Survey Dates and Stationing:
 Combined survey dates 20240404_PR_M77P00_M117P72; 20240405_PR_M77P00_M39P430;
 20241107_PR_M63P000_M58P000; 20241123_PR_M47P000_M53P000;
 20241123_PR_M53P000_M58P000; 20250326_PR_M46P000_M39P430;
 20250326_PR_M83P000_M68P000

Coordinate System: NAD 1983 StatePlane Texas South Central FIPS 4204 Feet Projection: Lambert Conformal Conic	
Dredging Reach Extent	0 0.35 0.7 1.4 Miles
Hydrographic Survey Extent	0 300 600 1,200 Feet

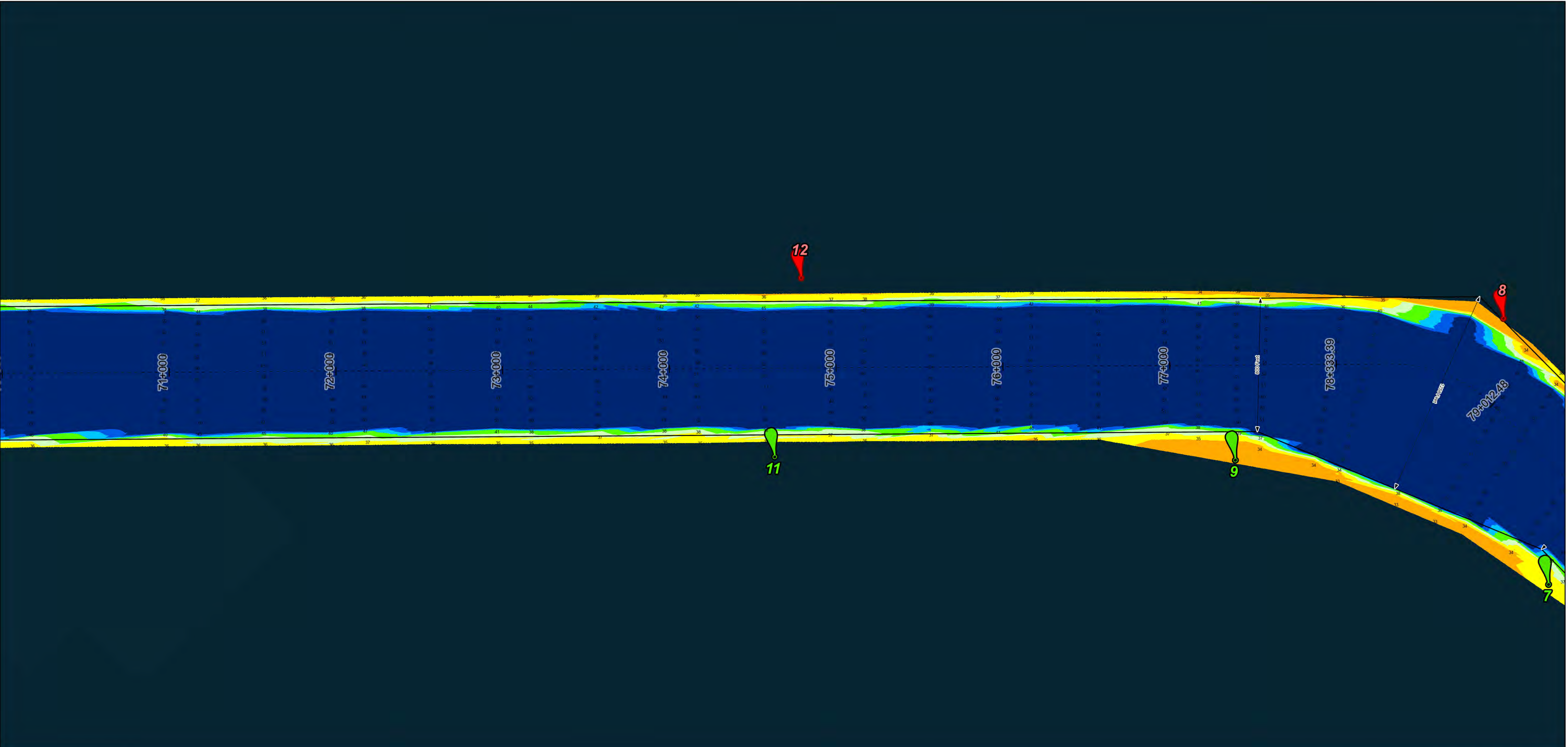
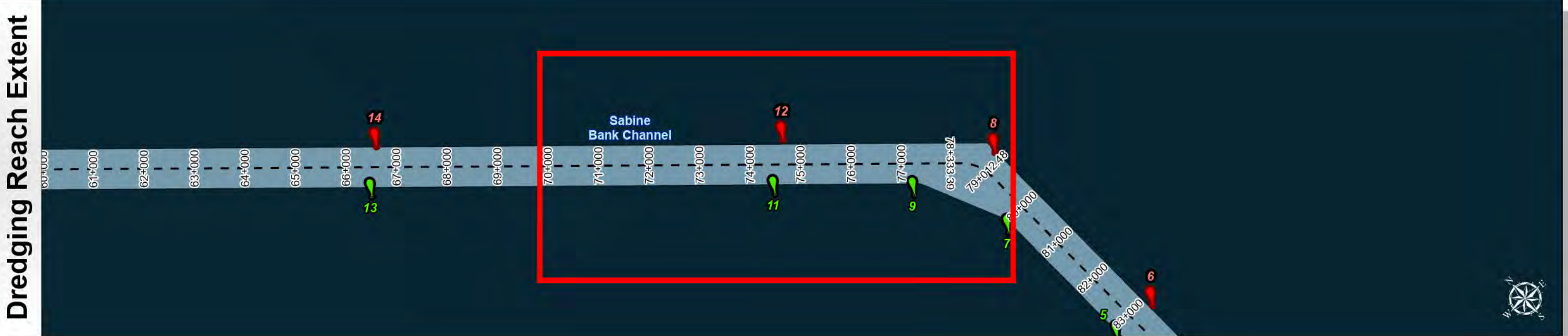
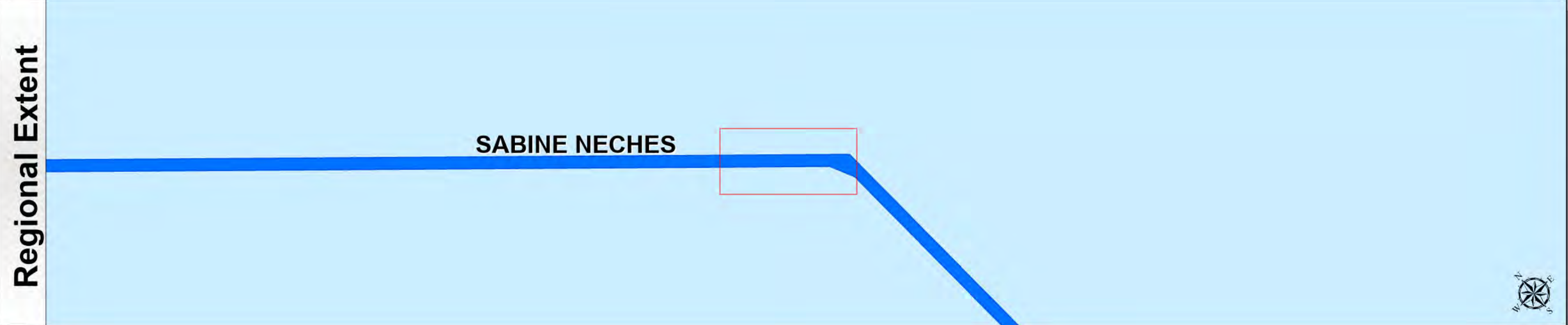
HYDROGRAPHIC SURVEY
 U.S. ARMY ENGINEER DISTRICT
 CORPS OF ENGINEERS
 GALVESTON, TEXAS

Station: 95+740.87 to 18+091.09
 SABINE NECHES
 Sabine Bank Channel

Sabine Neches Waterway: Sabine Bank Channel



U.S. Army Corps of Engineers
Galveston District



Latest Survey Collection Date: 31 March 2025	Authorized Depth: -42ft.
Document Page: 3 of 9	Width Range: 800ft to 1260ft
Scale: 1:3,500	Side Slope Ratio: (Rise : Run)
Mapped by: m3odnmhg	PDF Print Date: 5/12/2025
Additional Imagery info:	



Channel Features

- Channel Center Line
- Channel Toe
- ↔ Channel Dimensions

Aids to Navigation

- Green Side Aids
- Red Side Aids
- Lights

MLLW

0 - 25	25 - 30	30 - 35	35 - 37	37 - 39	39 - 42	42 - 44	44 - 46	< 46
Red	Orange	Yellow	Light Green	Green	Light Blue	Blue	Dark Blue	Black

NOTES:

- Horizontal coordinates are referenced to Texas State Plane Coordinate System, South Central Zone NAD83 US Survey Feet.
- Elevations are referenced to Mean Lower Low Water (MLLW) datum.
- This project was designed by the Galveston District of the U.S. Army Corps of Engineers. The initials and signatures and registration designations of individuals appear on these project documents within the scope of their employment as required by 47 CFR 1.113-1, §1.132.
- The information depicted on this survey map represents the results of surveys made on the dates indicated and can only be considered as indicating the general conditions existing at that time. These conditions are subject to rapid change due to shoaling events. A prudent mariner should not rely exclusively on the information provided here. Required by 33 CFR 209.225.
- For the most up to date information please check our website at: <http://www.swg.usace.army.mil/Missions/Navigation/HydrographicSurveys/>

Service Layer Credits: World Topographic Map: Texas Parks & Wildlife, Esri, HERE, Garmin, INCREMENT P, USGS, METI/NASA, NGA, EPA, USDA, World Imagery, Maxar, World Ocean Base: Esri, GEBCO, Garmin, NaturalVue

Additional Combined Survey Dates and Stationing:

Combined survey dates 20240404_PR_M77P00_M117P72; 20240405_PR_M77P00_M39P430; 20241107_PR_M63P000_M58P000; 20241123_PR_M47P000_M53P000; 20241123_PR_M53P000_M58P000; 20250326_PR_M46P000_M39P430; 20250326_PR_M83P000_M68P000

Coordinate System: NAD 1983 StatePlane Texas South Central FIPS 4204 Feet
Projection: Lambert Conformal Conic

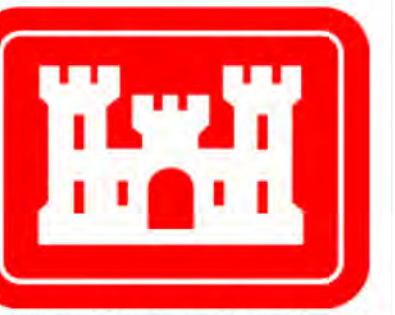
Dredging Reach Extent

Hydrographic Survey Extent

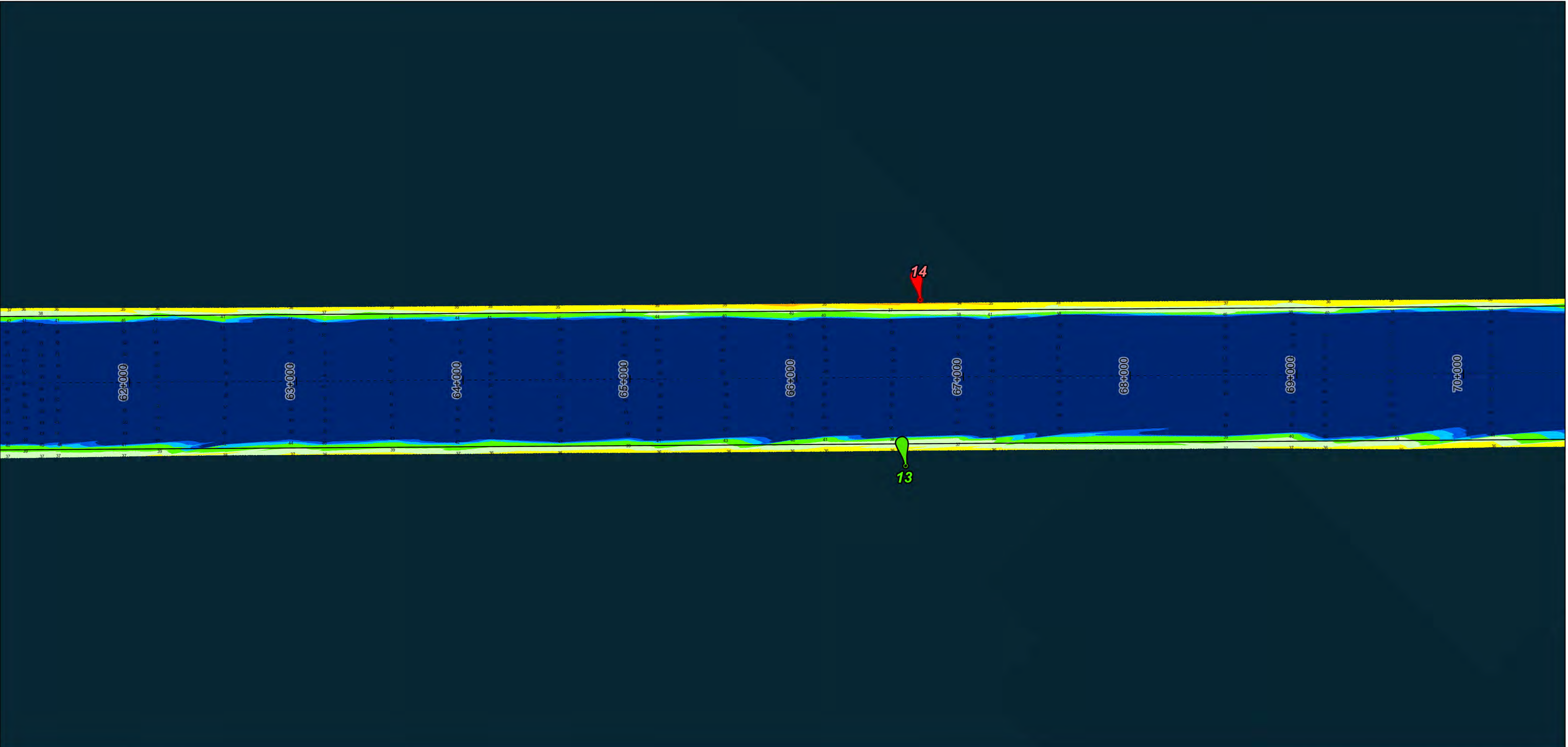
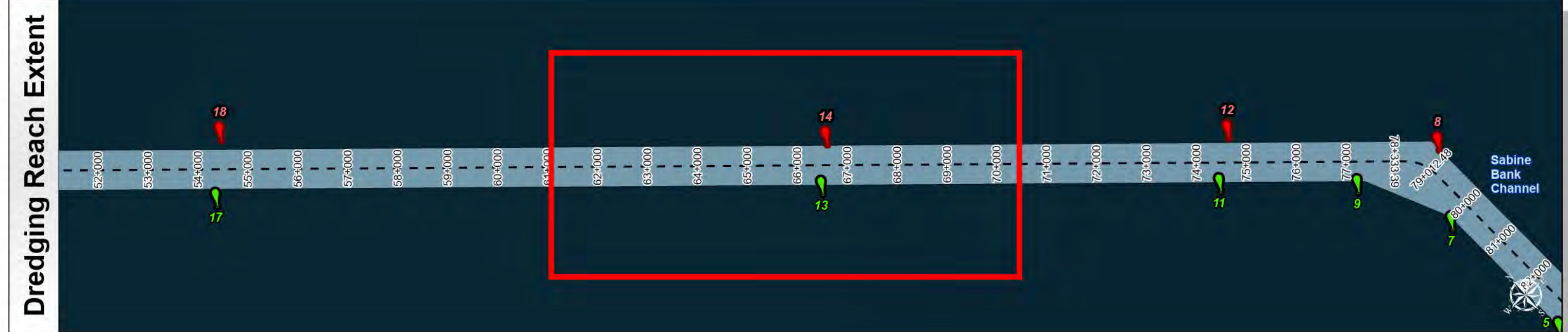
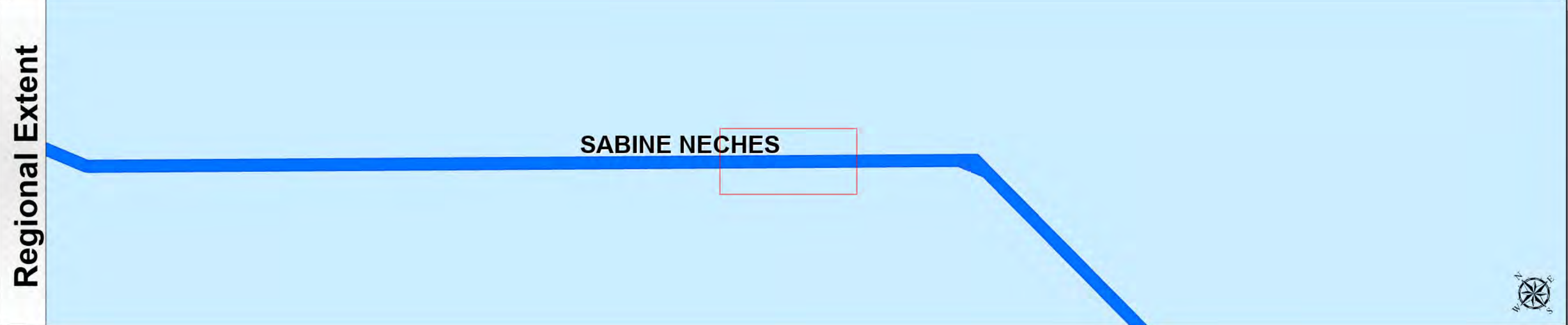
HYDROGRAPHIC SURVEY
U.S. ARMY ENGINEER DISTRICT
CORPS OF ENGINEERS
GALVESTON, TEXAS

Station: 95+740.87 to 18+091.09
SABINE NECHES
Sabine Bank Channel

Sabine Neches Waterway: Sabine Bank Channel



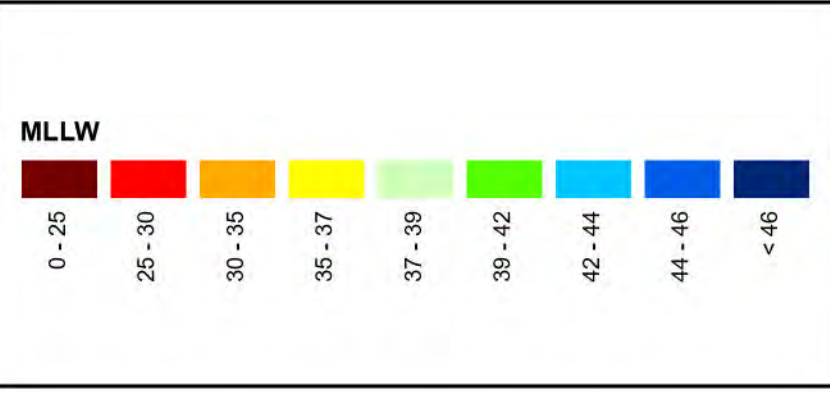
U.S. Army Corps of Engineers
Galveston District



Latest Survey Collection Date: 31 March 2025	Authorized Depth: -42ft.
Document Page: 4 of 9	Width Range: 800ft to 1260ft
Scale: 1:3,500	Side Slope Ratio: (Rise : Run)
Mapped by: m3odrmhg	PDF Print Date: 5/12/2025
Additional Imagery info:	

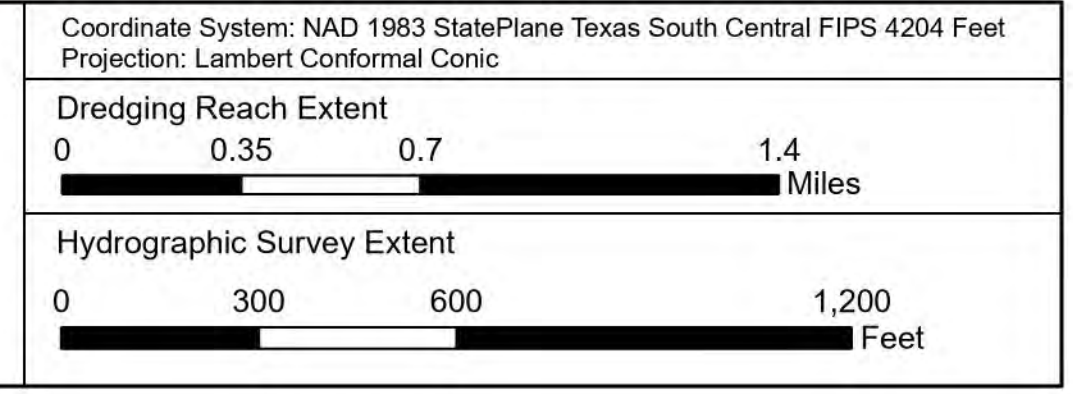


Channel Features	Aids to Navigation
- - - Channel Center Line	Green Side Aids
— Channel Toe	Red Side Aids
↔ Channel Dimensions	Lights



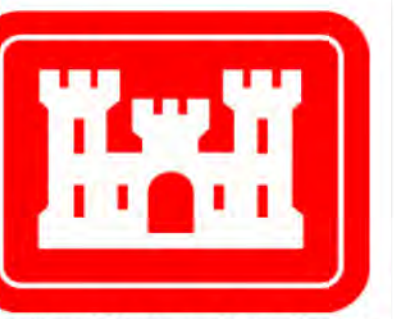
NOTES:
 1. Horizontal coordinates are referenced to Texas State Plane Coordinate System, South Central Zone NAD83 US Survey Feet.
 2. Elevations are referenced to Mean Lower Low Water (MLLW) datum.
 3. This project was designed by the Galveston District of the U.S. Army Corps of Engineers. The initials and signatures and registration designations of individuals appear on these project documents within the scope of their employment as required by 47CFR 117.1-4132.
 4. The information depicted on this survey map represents the results of surveys made on the dates indicated and can only be considered as indicating the general conditions existing at that time. These conditions are subject to rapid change due to shoaling events. A prudent mariner should not rely exclusively on the information provided here. Required by 33 CFR 209.225.
 5. For the most up to date information please check our website at: <http://www.saw.usace.army.mil/Missions/Navigation/HydrographicSurveys/>
 Service Layer Credits: World Topographic Map: Texas Parks & Wildlife, Esri, HERE, Garmin, INCREMENT P, USGS, METI/NASA, NGA, EPA, USDA, World Imagery, Maxar, World Ocean Base, Esri, GEBCO, Garmin, NaturalVue

Additional Combined Survey Dates and Stationing:
 Combined survey dates 20240404_PR_M77P00_M117P72; 20240405_PR_M77P00_M39P430;
 20241107_PR_M63P000_M58P000; 20241123_PR_M47P000_M53P000;
 20241123_PR_M53P000_M58P000; 20250326_PR_M46P000_M39P430;
 20250326_PR_M83P000_M68P000

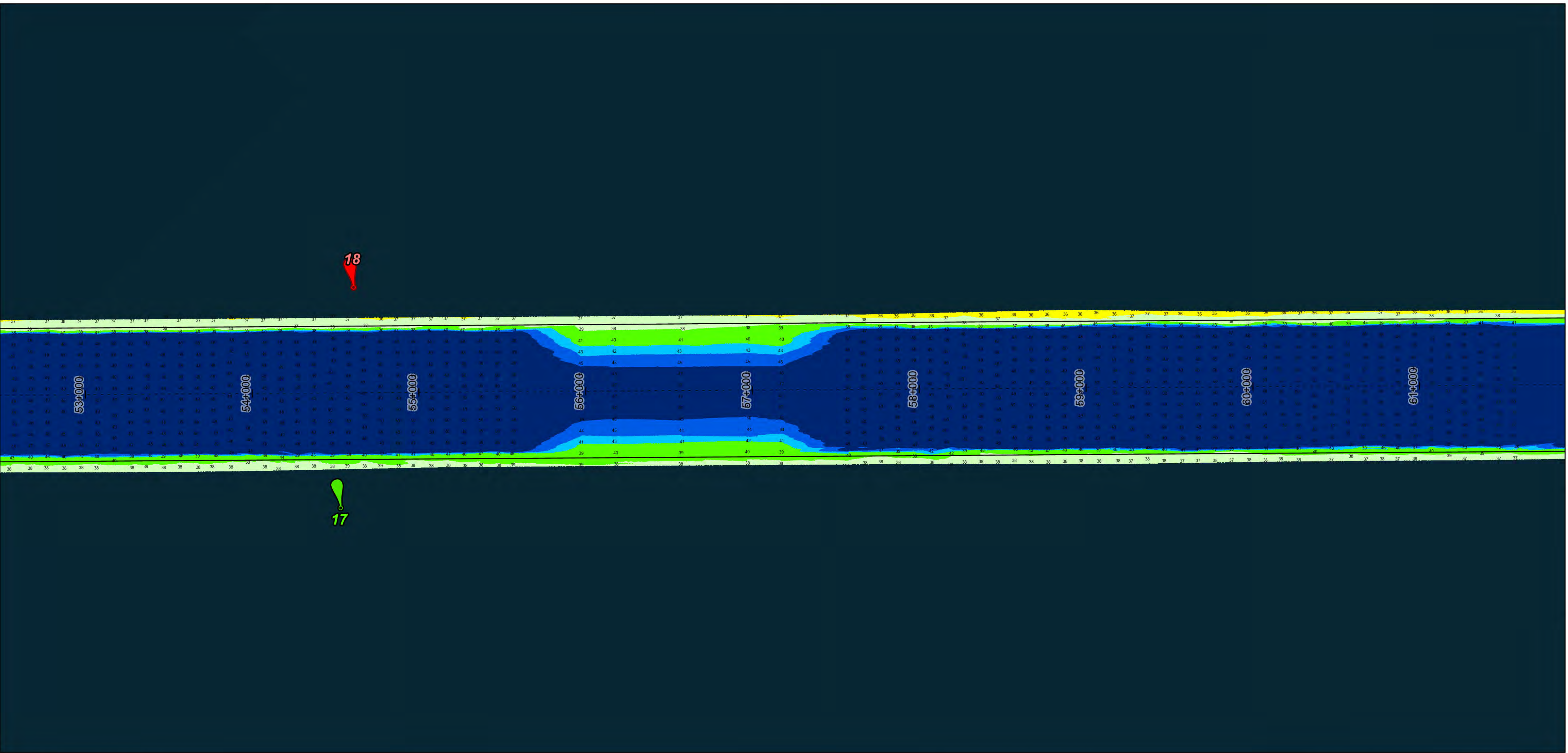
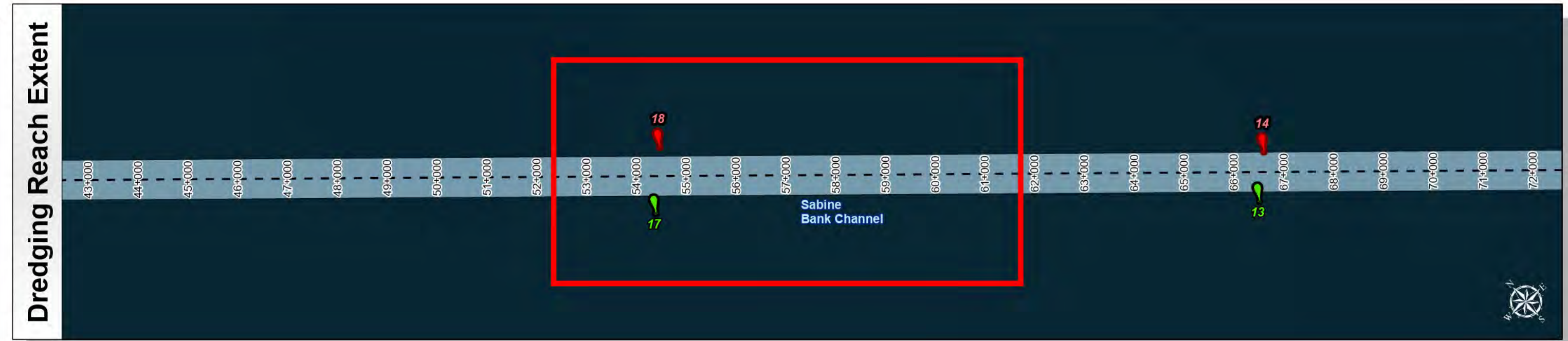
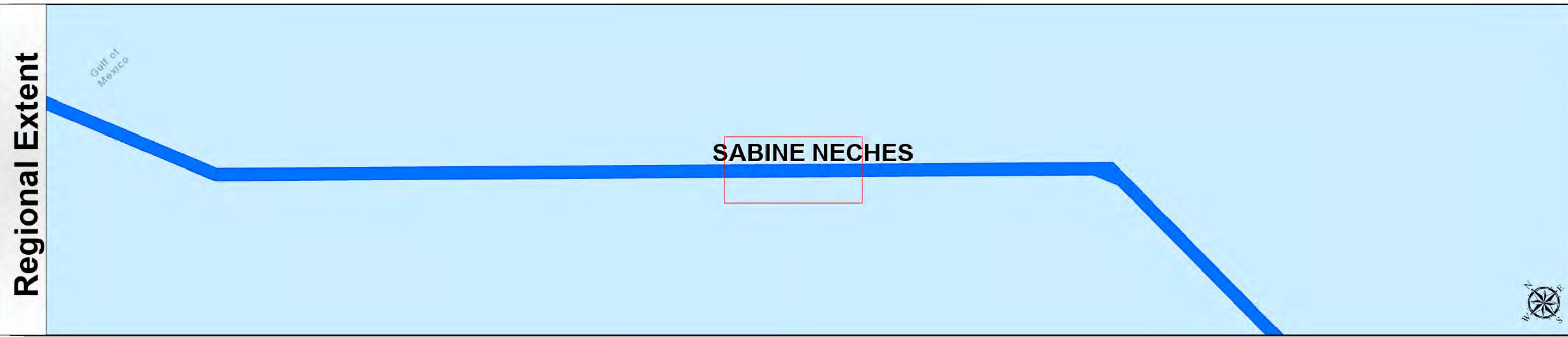


HYDROGRAPHIC SURVEY
 U.S. ARMY ENGINEER DISTRICT
 CORPS OF ENGINEERS
 GALVESTON, TEXAS
Station: 95+740.87 to 18+091.09
 SABINE NECHES
 Sabine Bank Channel

Sabine Neches Waterway: Sabine Bank Channel



U.S. Army Corps of Engineers
Galveston District



Latest Survey Collection Date: 31 March 2025	Authorized Depth: -42ft.
Document Page: 5 of 9	Width Range: 800ft to 1260ft
Scale: 1:3,500	Side Slope Ratio: (Rise : Run)
Mapped by: m3odrmhg	PDF Print Date: 5/12/2025
Additional Imagery info:	
Website Index Number: 5	



Channel Features

- Channel Center Line
- Channel Toe
- ↔ Channel Dimensions

Aids to Navigation

- Green Side Aids
- Red Side Aids
- Lights

Depth Legend (MLLW)

0 - 25
25 - 30
30 - 35
35 - 37
37 - 39
39 - 42
42 - 44
44 - 46
< 46

NOTES:

- Horizontal coordinates are referenced to Texas State Plane Coordinate System, South Central Zone NAD83 US Survey Feet.
- Elevations are referenced to Mean Lower Low Water (MLLW) datum.
- This project was designed by the Galveston District of the U.S. Army Corps of Engineers. The initials and signatures and registration designations of individuals appear on these project documents within the scope of their employment as required by 47CFR 117.1-4, §152.
- The information depicted on this survey map represents the results of surveys made on the dates indicated and can only be considered as indicating the general conditions existing at that time. These conditions are subject to rapid change due to shoaling events. A prudent mariner should not rely exclusively on the information provided here. Required by 33 CFR 209.225.
- For the most up to date information please check our website at: <http://www.swg.usace.army.mil/Missions/Navigation/HydrographicSurveys/>

Service Layer Credits: World Topographic Map, Texas Parks & Wildlife, Esri, HERE, Garmin, INCREMENT P, USGS, METI/NASA, NGA, EPA, USDA, World Imagery, Maxar, World Ocean Base, Esri, GEBCO, Garmin, NaturalVue

Additional Combined Survey Dates and Stationing:

Combined survey dates 20240404_PR_M77P00_M117P72; 20240405_PR_M77P00_M39P430; 20241107_PR_M63P000_M58P000; 20241123_PR_M47P000_M53P000; 20241123_PR_M53P000_M58P000; 20250326_PR_M46P000_M39P430; 20250326_PR_M83P000_M68P000

Coordinate System: NAD 1983 StatePlane Texas South Central FIPS 4204 Feet
Projection: Lambert Conformal Conic

Dredging Reach Extent

0 0.35 0.7 1.4 Miles

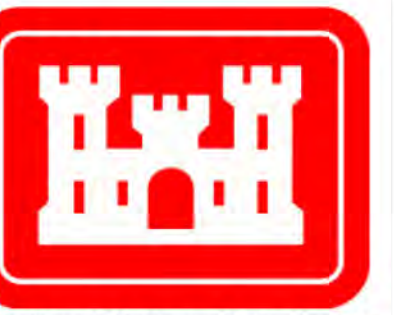
Hydrographic Survey Extent

0 300 600 1,200 Feet

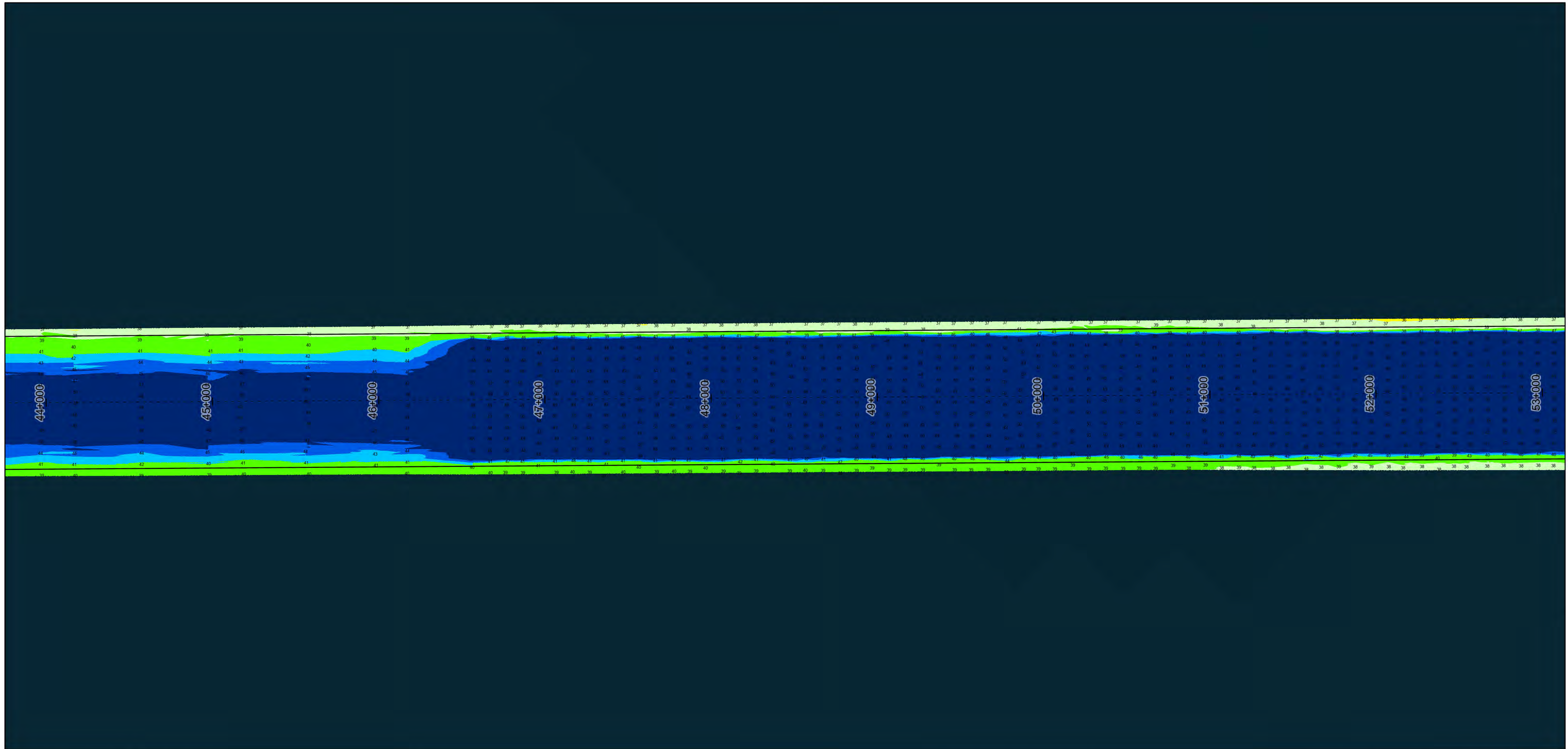
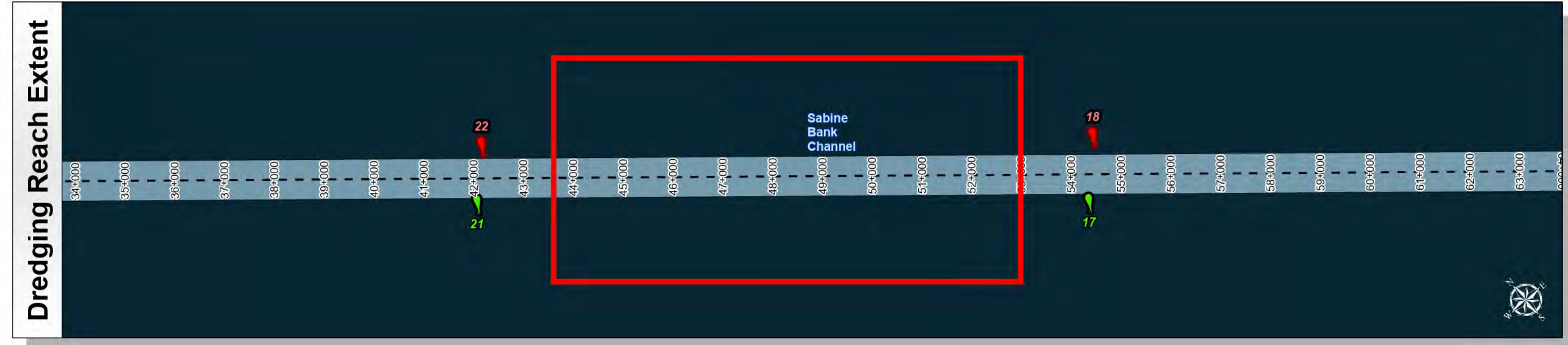
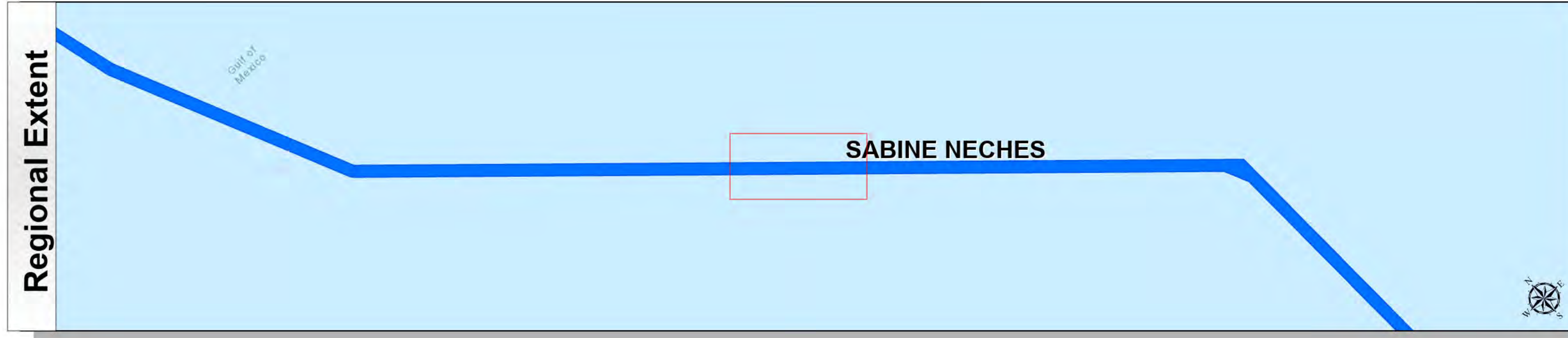
HYDROGRAPHIC SURVEY
U.S. ARMY ENGINEER DISTRICT
CORPS OF ENGINEERS
GALVESTON, TEXAS

Station: 95+740.87 to 18+091.09
SABINE NECHES
Sabine Bank Channel

Sabine Neches Waterway: Sabine Bank Channel



U.S. Army Corps of Engineers
Galveston District



Channel Features	Aids to Navigation	Depth Scale																		
<ul style="list-style-type: none"> --- Channel Center Line — Channel Toe ↔ Channel Dimensions 	<ul style="list-style-type: none"> Green Side Aids Red Side Aids Lights 	<p>MLLW</p> <table border="1"> <tr><td>0 - 25</td><td>25 - 30</td><td>30 - 35</td><td>35 - 37</td><td>37 - 39</td><td>39 - 42</td><td>42 - 44</td><td>44 - 46</td><td>< 46</td></tr> <tr><td>Red</td><td>Orange</td><td>Yellow</td><td>Light Green</td><td>Green</td><td>Dark Green</td><td>Blue</td><td>Dark Blue</td><td>Black</td></tr> </table>	0 - 25	25 - 30	30 - 35	35 - 37	37 - 39	39 - 42	42 - 44	44 - 46	< 46	Red	Orange	Yellow	Light Green	Green	Dark Green	Blue	Dark Blue	Black
0 - 25	25 - 30	30 - 35	35 - 37	37 - 39	39 - 42	42 - 44	44 - 46	< 46												
Red	Orange	Yellow	Light Green	Green	Dark Green	Blue	Dark Blue	Black												

NOTES:
 1. Horizontal coordinates are referenced to Texas State Plane Coordinate System, South Central Zone NAD83 US Survey Feet.
 2. Elevations are referenced to Mean Lower Low Water (MLLW) datum.
 3. This project was designed by the Galveston District of the U.S. Army Corps of Engineers. The initials and signatures and registration designations of individuals appear on these project documents within the scope of their employment as required by 47 CFR 1.1113-1, §1.112.
 4. The information depicted on this survey map represents the results of surveys made on the dates indicated and can only be considered as indicating the general conditions existing at that time. These conditions are subject to rapid change due to shoaling events. A prudent mariner should not rely exclusively on the information provided here. Required by 33 CFR 209.225.
 5. For the most up to date information please check our website at: <http://www.swg.usace.army.mil/Missions/Navigation/HydrographicSurveys/>
 Service Layer Credits: World Topographic Map: Texas Parks & Wildlife, Esri, HERE, Garmin, INCREMENT P, USGS, METI/NASA, NGA, EPA, USDA
 World Imagery: Maxar
 World Ocean Base: Esri, GEBCO, Garmin, NaturalVue

Additional Combined Survey Dates and Stationing:
 Combined survey dates 20240404_PR_M77P00_M117P72; 20240405_PR_M77P00_M39P430;
 20241107_PR_M63P000_M58P000; 20241123_PR_M47P000_M53P000;
 20241123_PR_M53P000_M58P000; 20250326_PR_M46P000_M39P430;
 20250326_PR_M83P000_M68P000

Coordinate System: NAD 1983 StatePlane Texas South Central FIPS 4204 Feet
 Projection: Lambert Conformal Conic

Dredging Reach Extent
 0 0.35 0.7 1.4 Miles

Hydrographic Survey Extent
 0 300 600 1,200 Feet

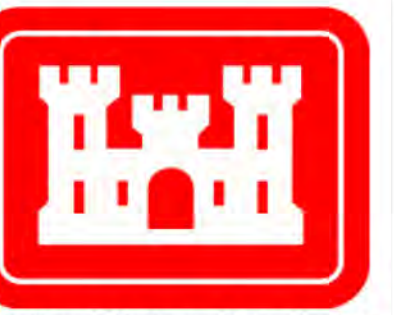
Latest Survey Collection Date: 31 March 2025	Authorized Depth: -42ft.
Document Page: 6 of 9	Width Range: 800ft to 1260ft
Scale: 1:3,500	Side Slope Ratio: (Rise : Run)
Mapped by: m3odrmhg	PDF Print Date: 5/12/2025
Additional Imagery info:	



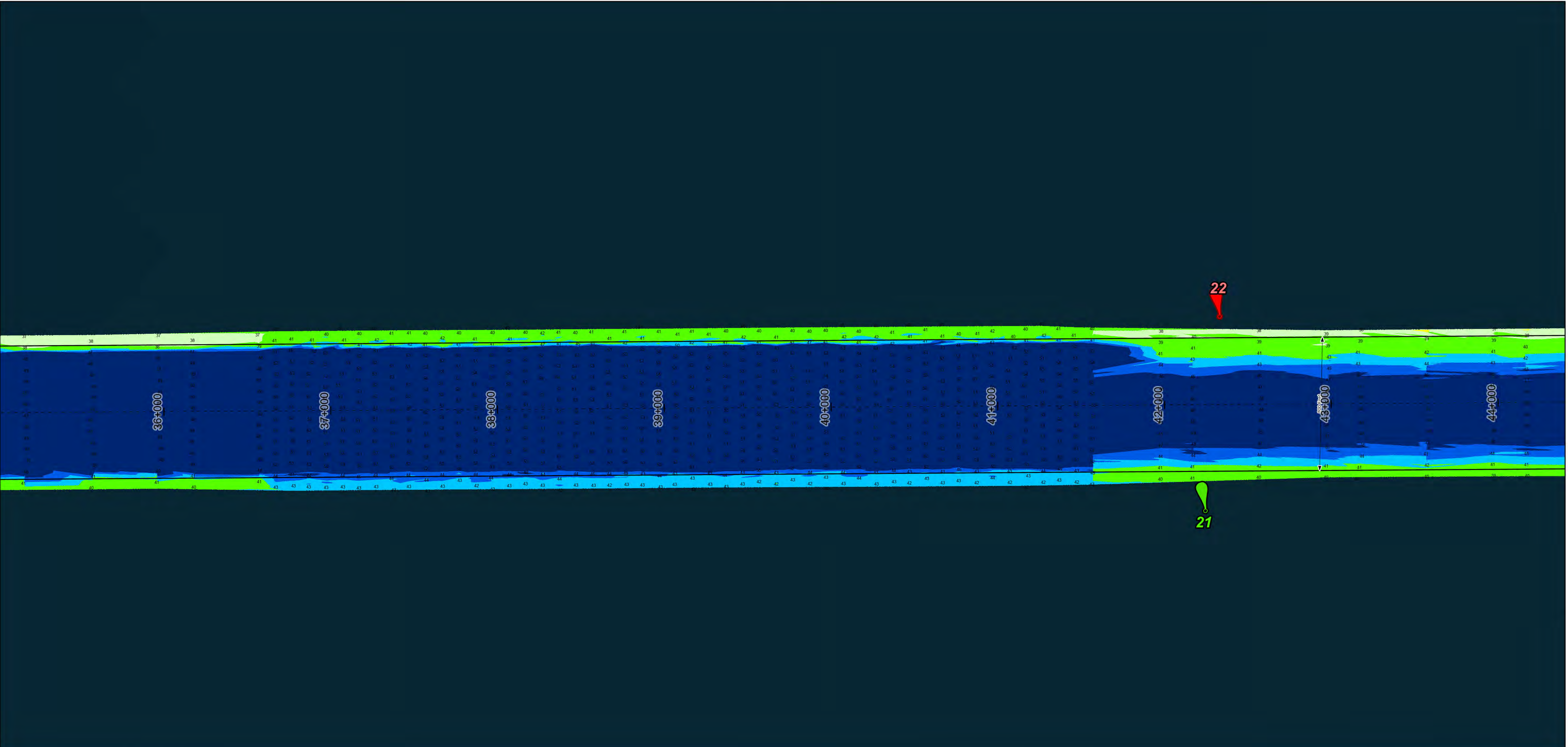
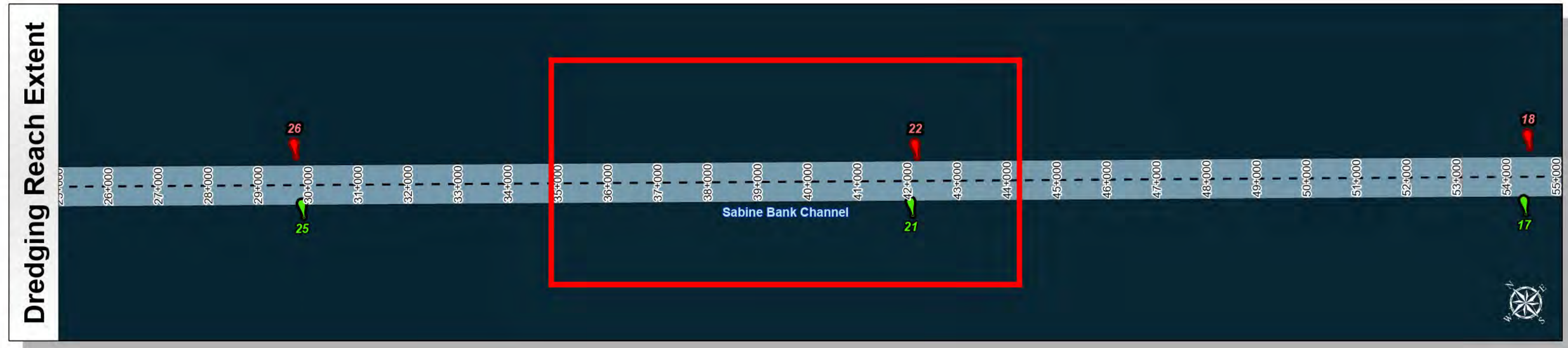
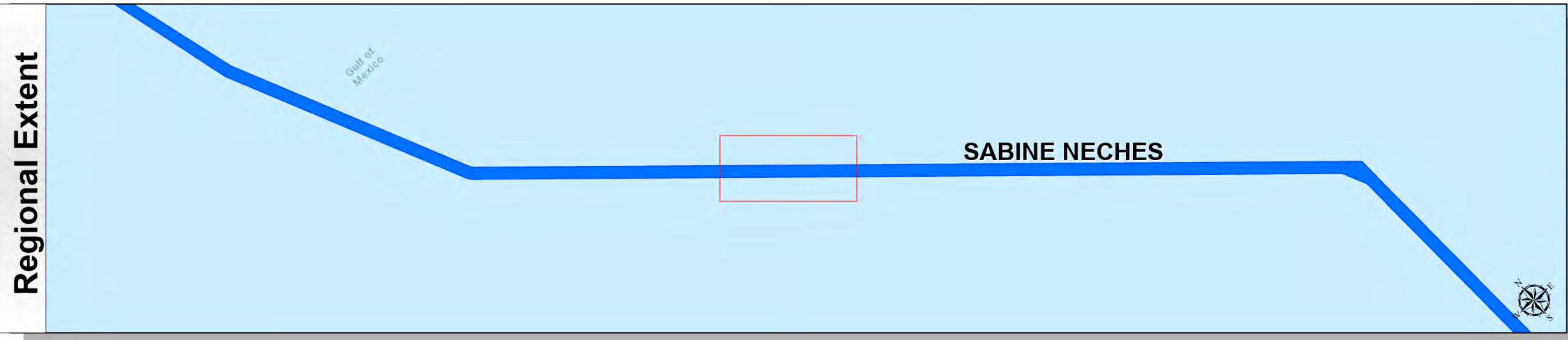
HYDROGRAPHIC SURVEY
 U.S. ARMY ENGINEER DISTRICT
 CORPS OF ENGINEERS
 GALVESTON, TEXAS

Station: 95+740.87 to 18+091.09
SABINE NECHES
 Sabine Bank Channel

Sabine Neches Waterway: Sabine Bank Channel



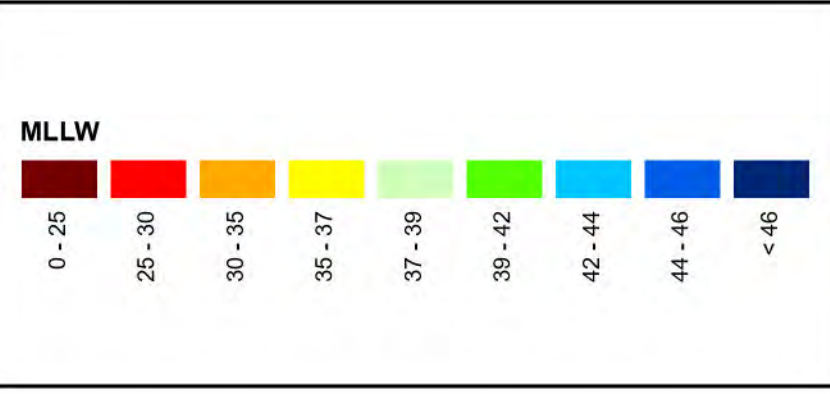
U.S. Army Corps of Engineers
Galveston District



Latest Survey Collection Date: 31 March 2025	Authorized Depth: -42ft.
Document Page: 7 of 9	Width Range: 800ft to 1260ft
Scale: 1:3,500	Side Slope Ratio: (Rise : Run)
Mapped by: m3odrmhg	PDF Print Date: 5/12/2025
Additional Imagery info:	

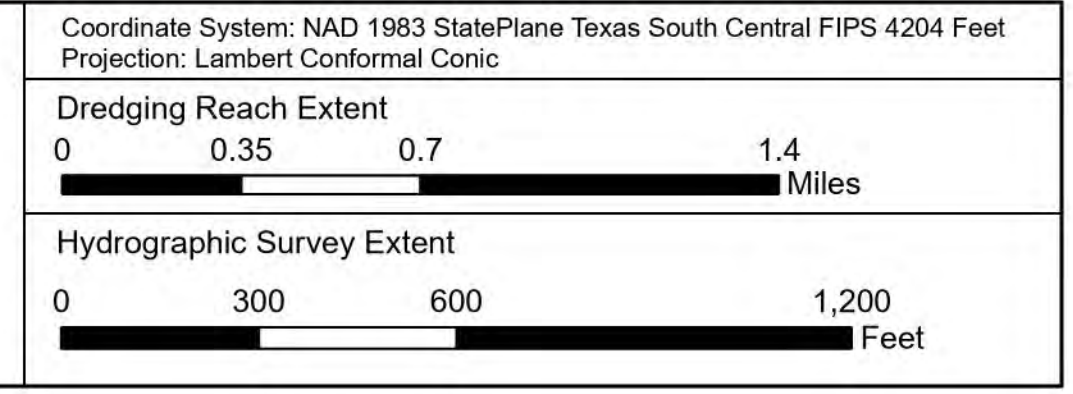


Channel Features	Aids to Navigation
- - - Channel Center Line	Green Side Aids
— Channel Toe	Red Side Aids
↔ Channel Dimensions	Lights



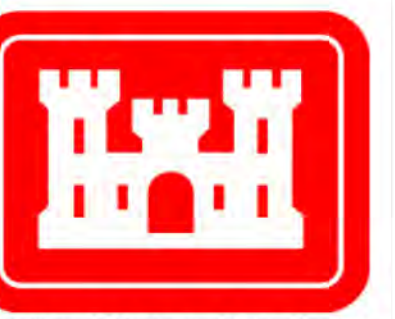
NOTES:
 1. Horizontal coordinates are referenced to Texas State Plane Coordinate System, South Central Zone NAD83 US Survey Feet.
 2. Elevations are referenced to Mean Lower Low Water (MLLW) datum.
 3. This project was designed by the Galveston District of the U.S. Army Corps of Engineers. The initials and signatures and registration designations of individuals appear on these project documents within the scope of their employment as required by 47 CFR 11.103-1, §11.102.
 4. The information depicted on this survey map represents the results of surveys made on the dates indicated and can only be considered as indicating the general conditions existing at that time. These conditions are subject to rapid change due to shoaling events. A prudent mariner should not rely exclusively on the information provided here. Required by 33 CFR 209.225.
 5. For the most up to date information please check our website at: <http://www.swg.usace.army.mil/Missions/Navigation/HydrographicSurveys/>
 Service Layer Credits: World Topographic Map: Texas Parks & Wildlife, Esri, HERE, Garmin, INCREMENT P, USGS, METI/NASA, NGA, EPA, USDA, World Imagery: Maxar, World Ocean Base: Esri, GEBCO, Garmin, NaturalVue

Additional Combined Survey Dates and Stationing:
 Combined survey dates 20240404_PR_M77P00_M117P72; 20240405_PR_M77P00_M39P430;
 20241107_PR_M63P000_M58P000; 20241123_PR_M47P000_M53P000;
 20241123_PR_M53P000_M58P000; 20250326_PR_M46P000_M39P430;
 20250326_PR_M83P000_M68P000

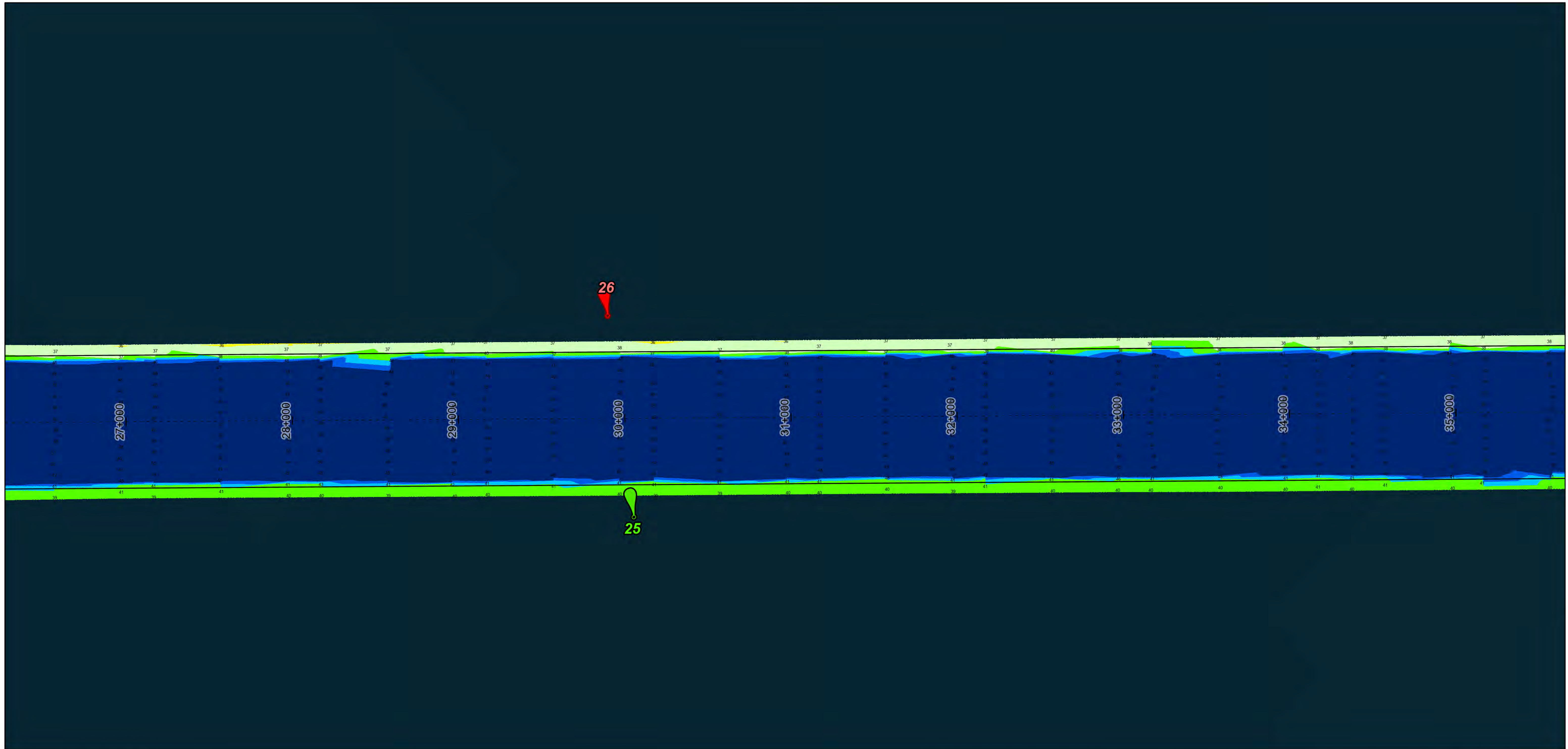
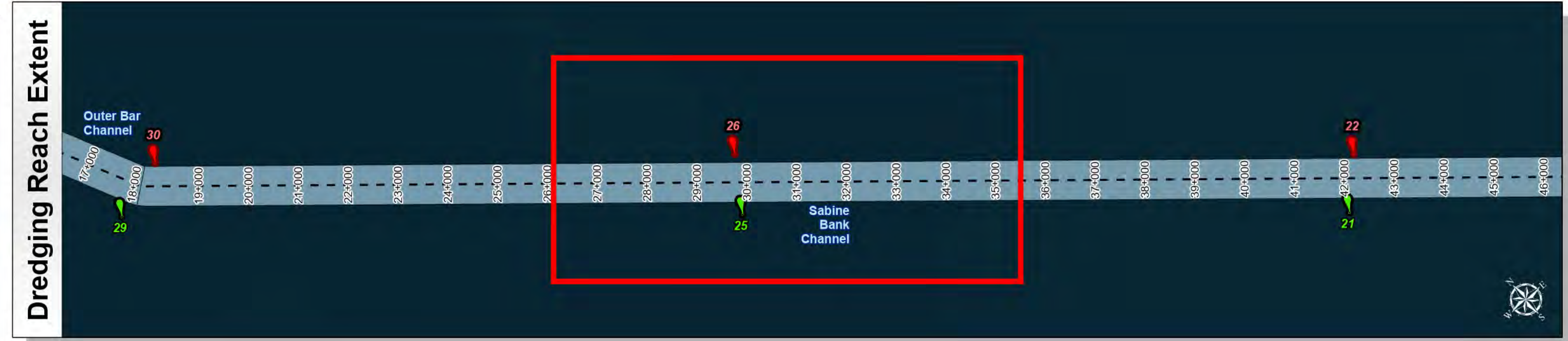
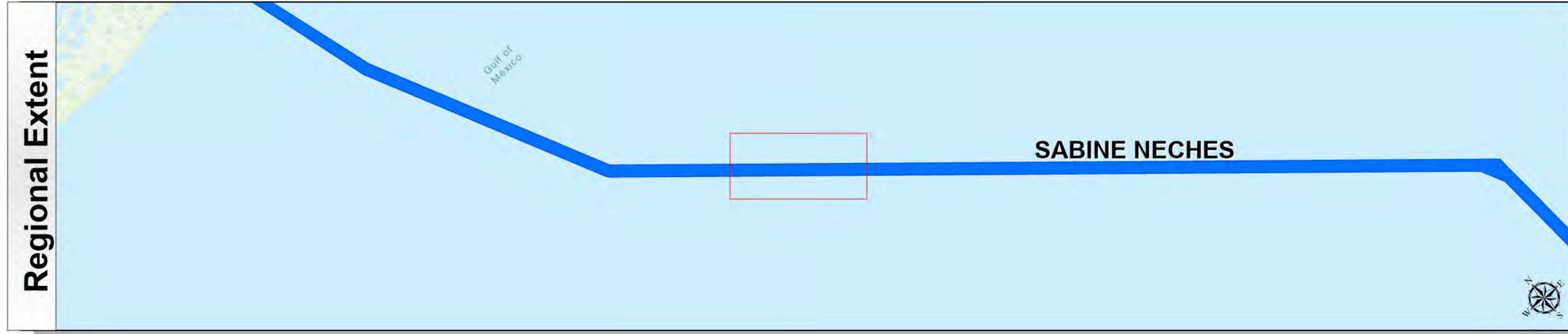


HYDROGRAPHIC SURVEY
 U.S. ARMY ENGINEER DISTRICT
 CORPS OF ENGINEERS
 GALVESTON, TEXAS
Station: 95+740.87 to 18+091.09
SABINE NECHES
 Sabine Bank Channel

Sabine Neches Waterway: Sabine Bank Channel



U.S. Army Corps of Engineers
Galveston District



Latest Survey Collection Date: 31 March 2025	Authorized Depth: -42ft.
Document Page: 8 of 9	Width Range: 800ft to 1260ft
Scale: 1:3,500	Side Slope Ratio: (Rise : Run)
Mapped by: m3odnmhg	PDF Print Date: 5/12/2025
Additional Imagery info:	



Channel Features

- Channel Center Line
- Channel Toe
- ↔ Channel Dimensions

Aids to Navigation

- Green Side Aids
- Red Side Aids
- Lights

MLLW

0 - 25	25 - 30	30 - 35	35 - 37	37 - 39	39 - 42	42 - 44	44 - 46	< 46
--------	---------	---------	---------	---------	---------	---------	---------	------

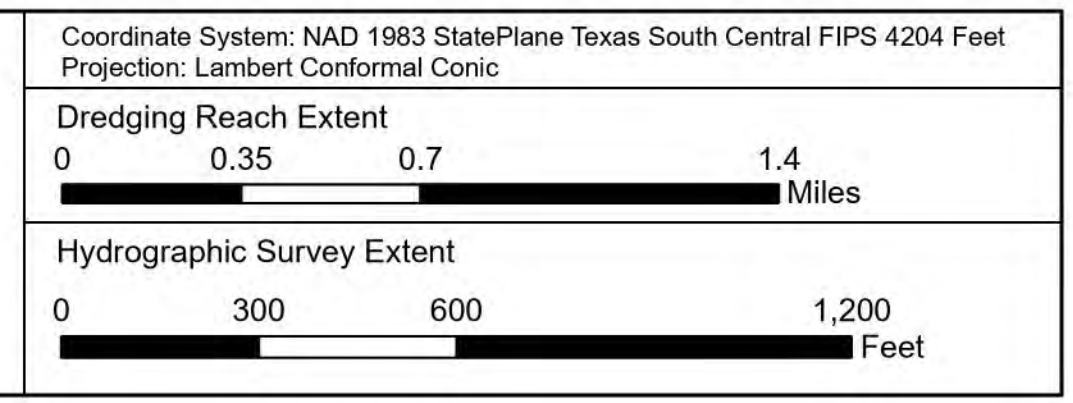
NOTES:

- Horizontal coordinates are referenced to Texas State Plane Coordinate System, South Central Zone NAD83 US Survey Feet.
- Elevations are referenced to Mean Lower Low Water (MLLW) datum.
- This project was designed by the Galveston District of the U.S. Army Corps of Engineers. The initials and signatures and registration designations of individuals appear on these project documents within the scope of their employment as required by er11103-1, 4/1/02.
- The information depicted on this survey map represents the results of surveys made on the dates indicated and can only be considered as indicating the general conditions existing at that time. These conditions are subject to rapid change due to shoaling events. A prudent mariner should not rely exclusively on the information provided here. Required by 33 CFR 209.225.
- For the most up to date information please check our website at: <http://www.swg.usace.army.mil/Missions/Navigation/HydrographicSurveys/>

Service Layer Credits: World Topographic Map: Texas Parks & Wildlife, Esri, HERE, Garmin, INCREMENT P, USGS, METI/NASA, NGA, EPA, USDA
World Imagery: Maxar
World Ocean Base: Esri, GEBCO, Garmin, NaturalVue

Additional Combined Survey Dates and Stationing:

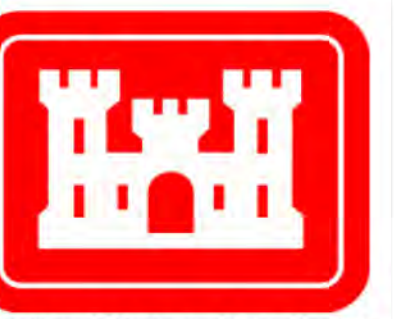
Combined survey dates 20240404_PR_M77P00_M117P72; 20240405_PR_M77P00_M39P430;
20241107_PR_M63P000_M58P000; 20241123_PR_M47P000_M53P000;
20241123_PR_M53P000_M58P000; 20250326_PR_M46P000_M39P430;
20250326_PR_M83P000_M68P000



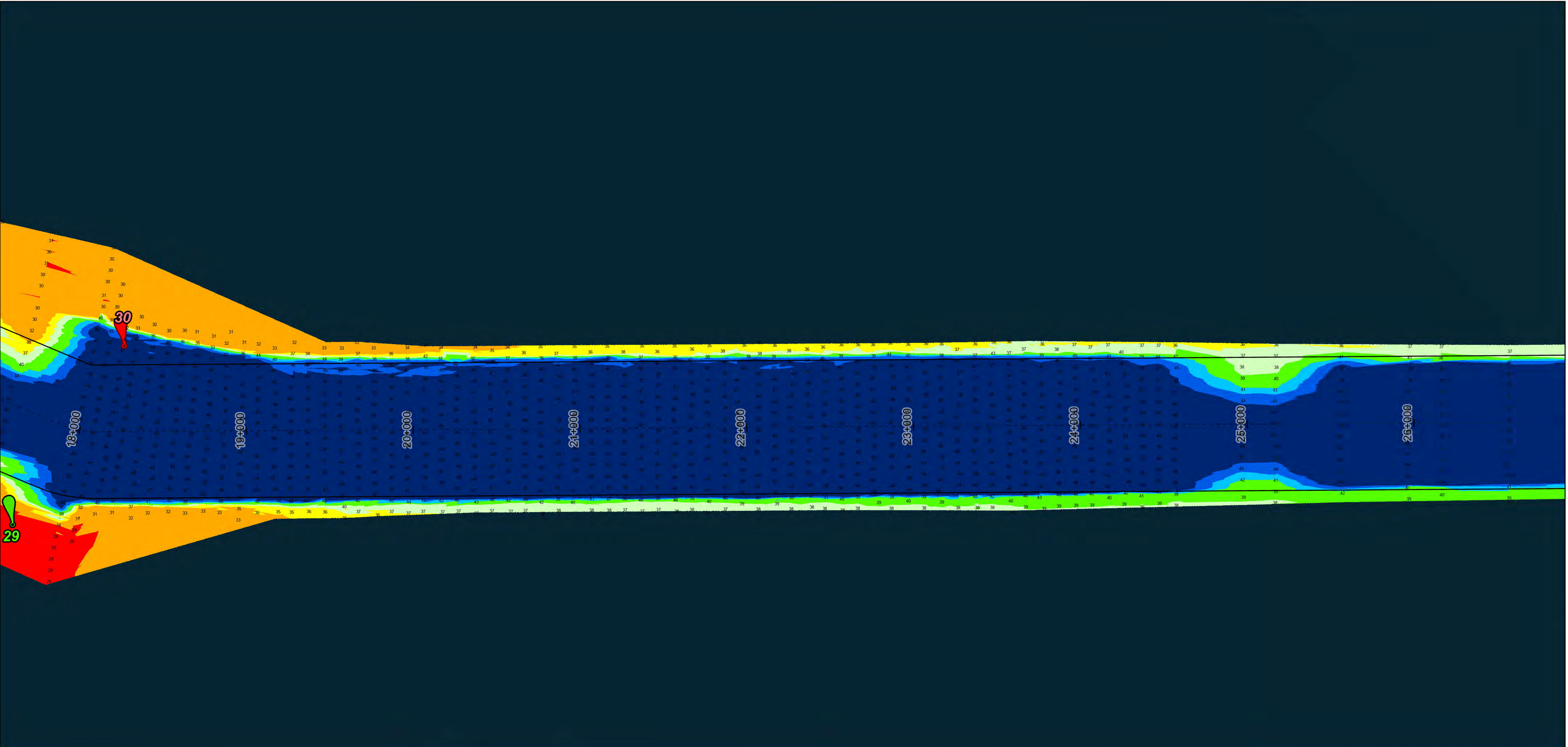
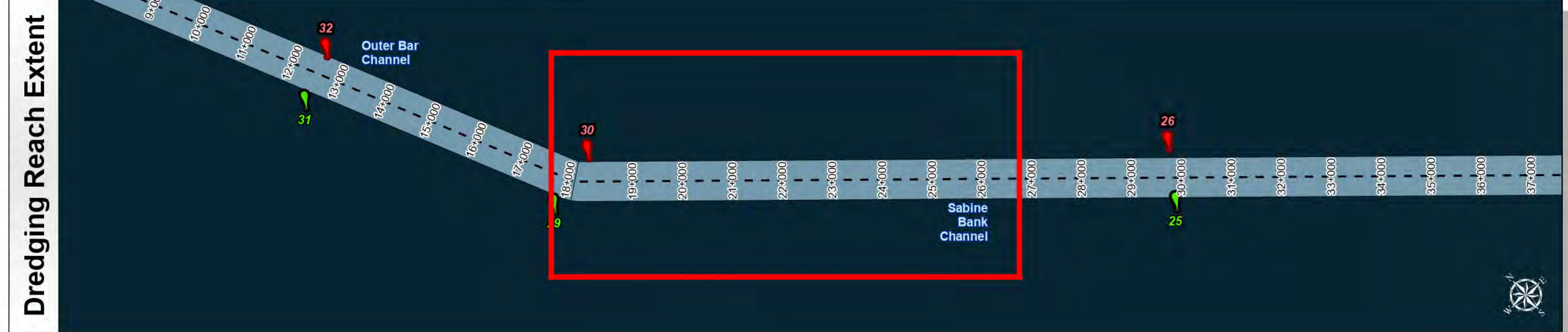
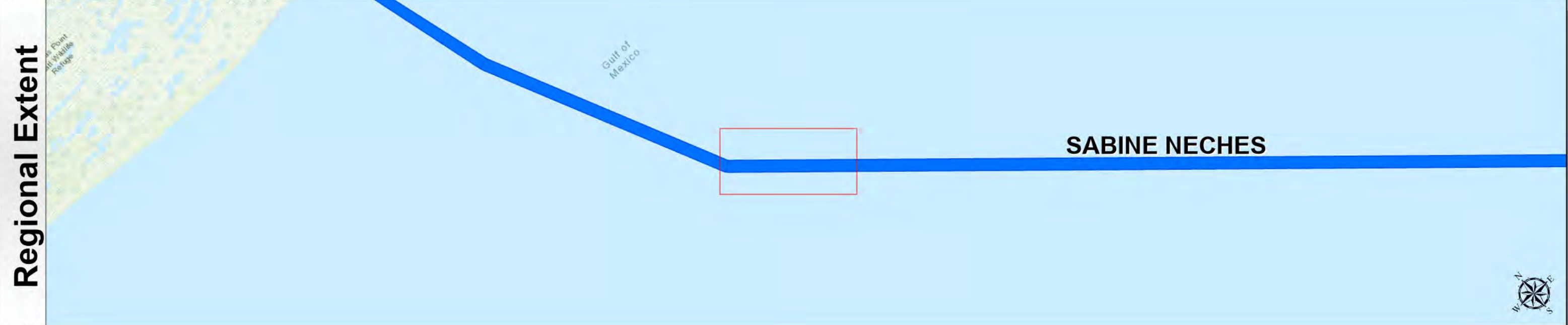
HYDROGRAPHIC SURVEY
U.S. ARMY ENGINEER DISTRICT
CORPS OF ENGINEERS
GALVESTON, TEXAS

Station: 95+740.87 to 18+091.09
SABINE NECHES
Sabine Bank Channel

Sabine Neches Waterway: Sabine Bank Channel



U.S. Army Corps of Engineers
Galveston District



Latest Survey Collection Date: 31 March 2025	Authorized Depth: -42ft.
Document Page: 9 of 9	Width Range: 800ft to 1260ft
Scale: 1:3,500	Side Slope Ratio: (Rise : Run)
Mapped by: m3odrmhg	PDF Print Date: 5/12/2025
Additional Imagery info:	



Channel Features	Aids to Navigation	Depth Legend (MLLW)
<ul style="list-style-type: none"> --- Channel Center Line — Channel Toe ↔ Channel Dimensions 	<ul style="list-style-type: none"> Green Side Aids Red Side Aids Lights 	<ul style="list-style-type: none"> 0 - 25 25 - 30 30 - 35 35 - 37 37 - 39 39 - 42 42 - 44 44 - 46 < 46

NOTES:
 1. Horizontal coordinates are referenced to Texas State Plane Coordinate System, South Central Zone NAD83 US Survey Feet.
 2. Elevations are referenced to Mean Lower Low Water (MLLW) datum.
 3. This project was designed by the Galveston District of the U.S. Army Corps of Engineers. The initials and signatures and registration designations of individuals appear on these project documents within the scope of their employment as required by 47 CFR 117.1-1, §117.2.
 4. The information depicted on this survey map represents the results of surveys made on the dates indicated and can only be considered as indicating the general conditions existing at that time. These conditions are subject to rapid change due to shoaling events. A prudent mariner should not rely exclusively on the information provided here. Required by 33 CFR 209.225.
 5. For the most up to date information please check our website at: <http://www.swg.usace.army.mil/Missions/Navigation/HydrographicSurveys/>
 Service Layer Credits: World Topographic Map: Texas Parks & Wildlife, Esri, HERE, Garmin, INCREMENT P, USGS, METI/NASA, NGA, EPA, USDA, World Imagery: Maxar, World Ocean Base: Esri, GEBCO, Garmin, NaturalVue

Additional Combined Survey Dates and Stationing:
 Combined survey dates 20240404_PR_M77P00_M117P72; 20240405_PR_M77P00_M39P430;
 20241107_PR_M63P000_M58P000; 20241123_PR_M47P000_M53P000;
 20241123_PR_M53P000_M58P000; 20250326_PR_M46P000_M39P430;
 20250326_PR_M83P000_M68P000

Coordinate System: NAD 1983 StatePlane Texas South Central FIPS 4204 Feet
 Projection: Lambert Conformal Conic

Dredging Reach Extent
 0 0.35 0.7 1.4 Miles

Hydrographic Survey Extent
 0 300 600 1,200 Feet

HYDROGRAPHIC SURVEY
 U.S. ARMY ENGINEER DISTRICT
 CORPS OF ENGINEERS
 GALVESTON, TEXAS

Station: 95+740.87 to 18+091.09
SABINE NECHES
 Sabine Bank Channel