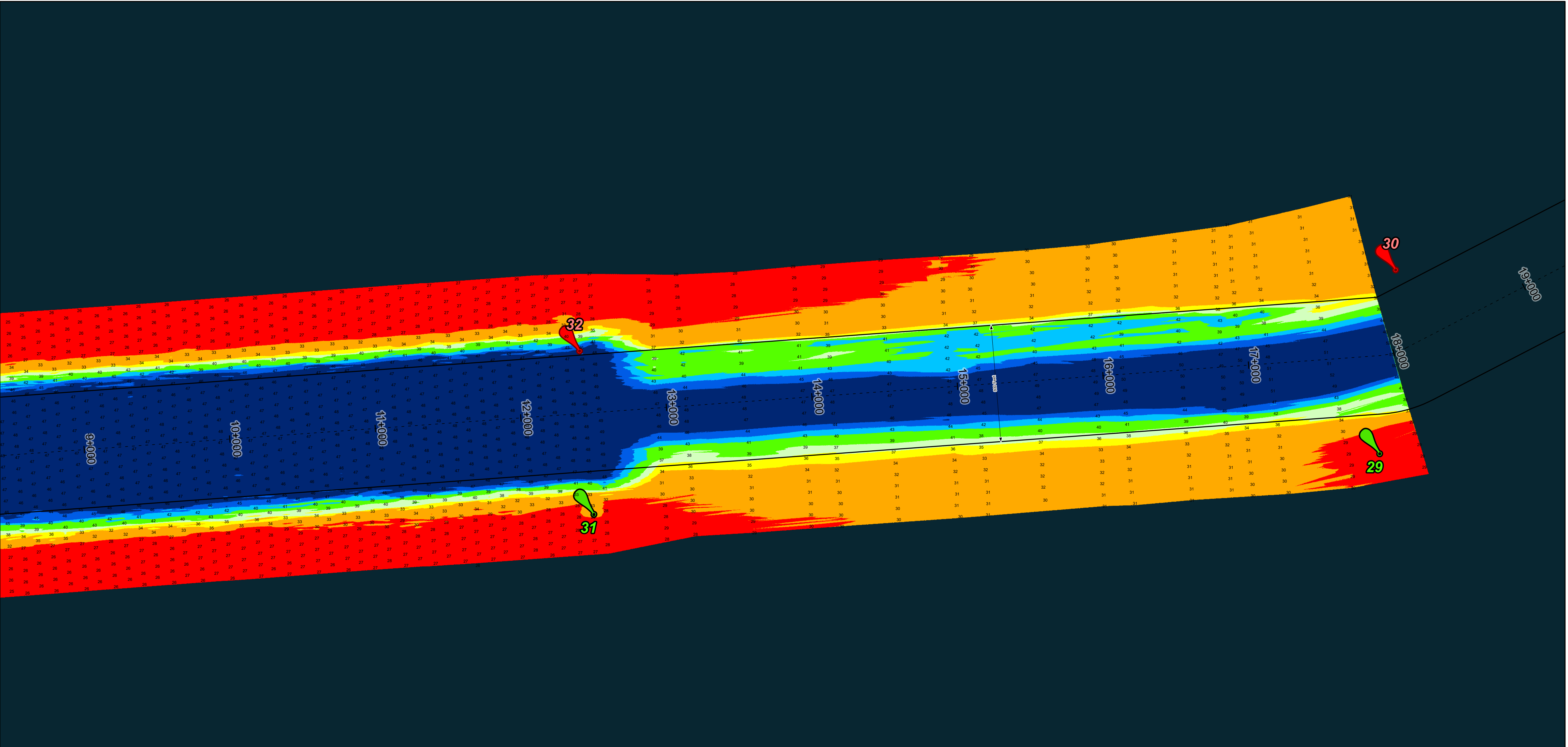
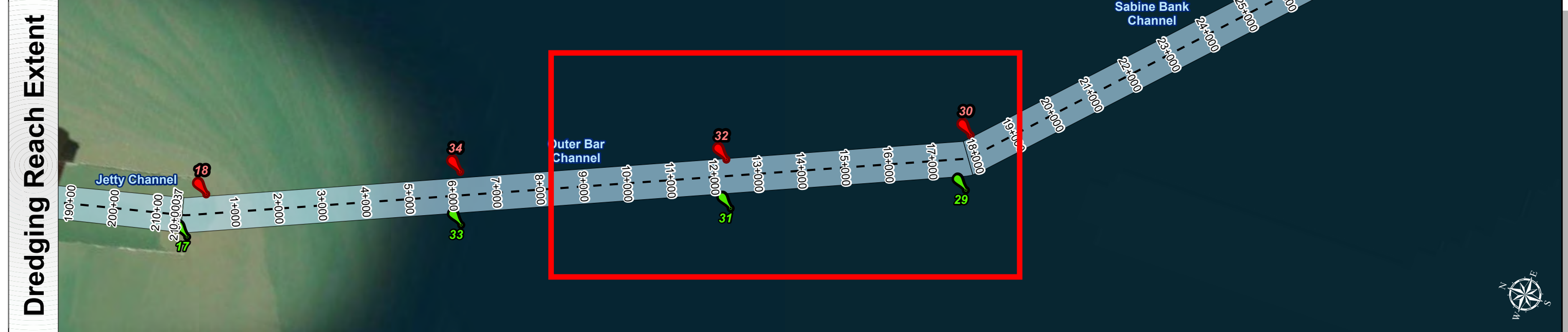


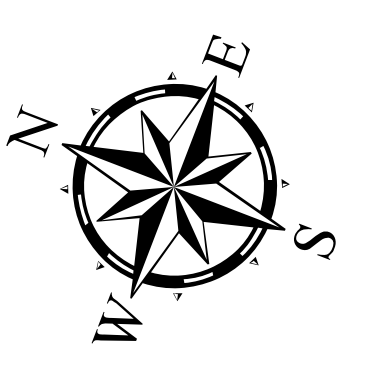
# Sabine Neches Waterway: Outer Bar Channel



U.S. Army Corps of Engineers  
Galveston District



Latest Survey Collection Date: 10 December 2024	Authorized Depth: -42ft.
Document Page: 1 of 2	Side Slope Ratio: (Rise : Run)
Scale: 1:4,000	PDF Print Date: 1/30/2025
Mapped by: m3odrmhg	
Additional Imagery info:	



Channel Features	Aids to Navigation
--- Channel Center Line	Green Side Aids
— Channel Toe	Red Side Aids
↔ Channel Dimensions	Lights

MLLW
0 - 25
25 - 30
30 - 35
35 - 37
37 - 39
39 - 42
42 - 44
44 - 46
< 46

NOTES:  
 1. Horizontal coordinates are referenced to Texas State Plane Coordinate System, South Central Zone NAD83 US Survey Feet.  
 2. Elevations are referenced to Mean Lower Low Water (MLLW) datum.  
 3. This project was designed by the Galveston District of the U.S. Army Corps of Engineers. The initials and signatures and registration designations of individuals appear on these project documents within the scope of their employment as required by er1110-1-8152.  
 4. The information depicted on this survey map represents the results of surveys made on the dates indicated and can only be considered as indicating the general conditions existing at that time. These conditions are subject to rapid change due to shoaling events. A prudent mariner should not rely exclusively on the information provided here. Required by 33 CFR 209.325.  
 5. For the most up to date information please check our website at: <http://www.svg.usace.army.mil/Missions/Navigation/HydrographicSurveys/>

Service Layer Credits: World Topographic Map: Texas Parks & Wildlife, Esri, HERE, Garmin, USGS, NGA, EPA, USDA, NPS  
 World Imagery: Maxar  
 World Ocean Base: Esri, GEBCO, Garmin, NaturalVue

Additional Combined Survey Dates and Stationing:  
 Combined survey dates 20240520\_PR\_M39P434\_M36P400; 20240607\_PR\_M23P000\_M21P600;  
 20240607\_PR\_M36P000\_M23P000; 20241113\_PR\_M34P000\_M29P000;  
 20241123\_PR\_M25P000\_M29P000; 20241210\_PR\_M25P000\_M23P000

Dredging Reach Extent	0	0.42	0.85	1.7
	Miles			
Hydrographic Survey Extent	0	345	690	1,380
	Feet			

Coordinate System: NAD 1983 StatePlane Texas South Central FIPS 4204 Feet  
 Projection: Lambert Conformal Conic

**HYDROGRAPHIC SURVEY**  
 U.S. ARMY ENGINEER DISTRICT  
 CORPS OF ENGINEERS  
 GALVESTON, TEXAS

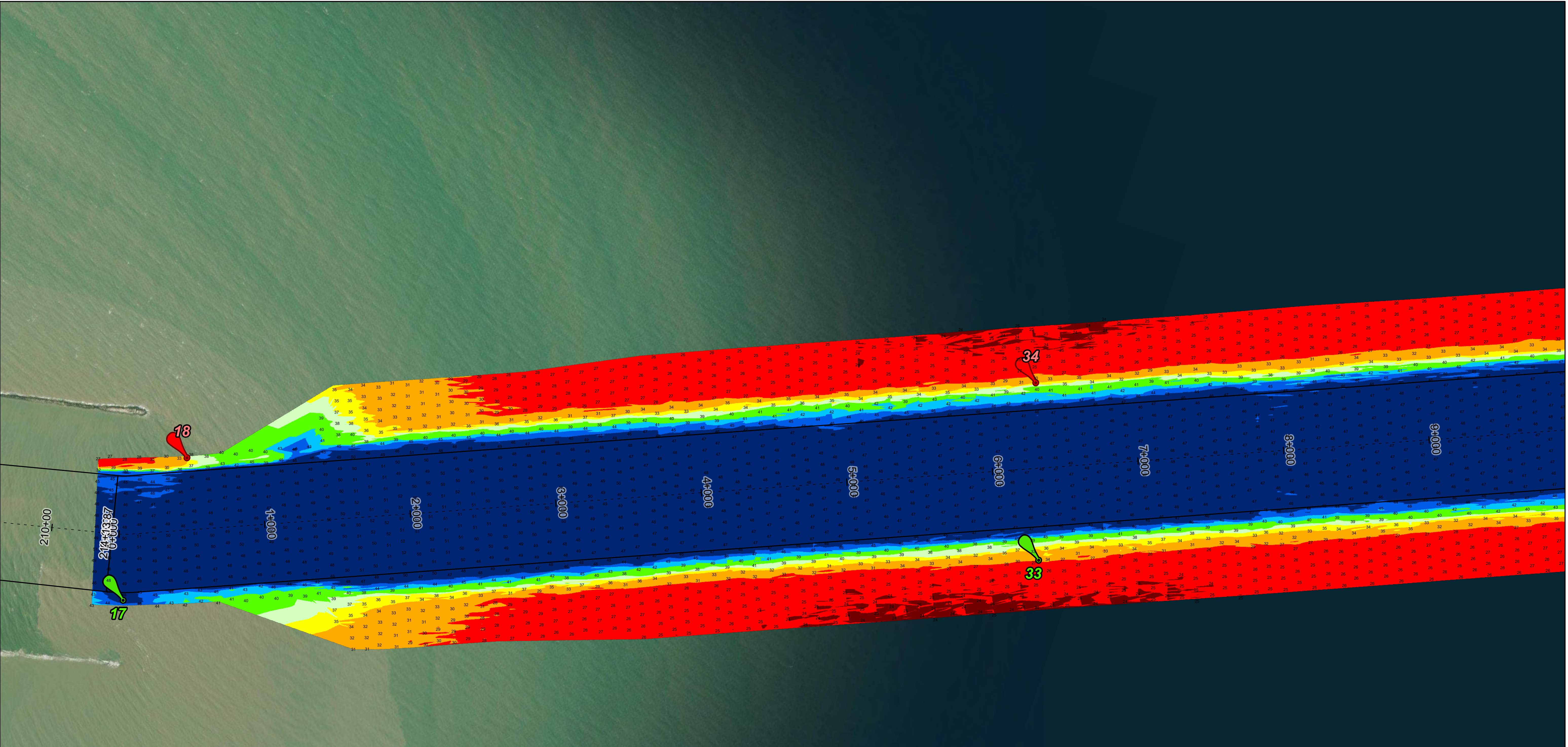
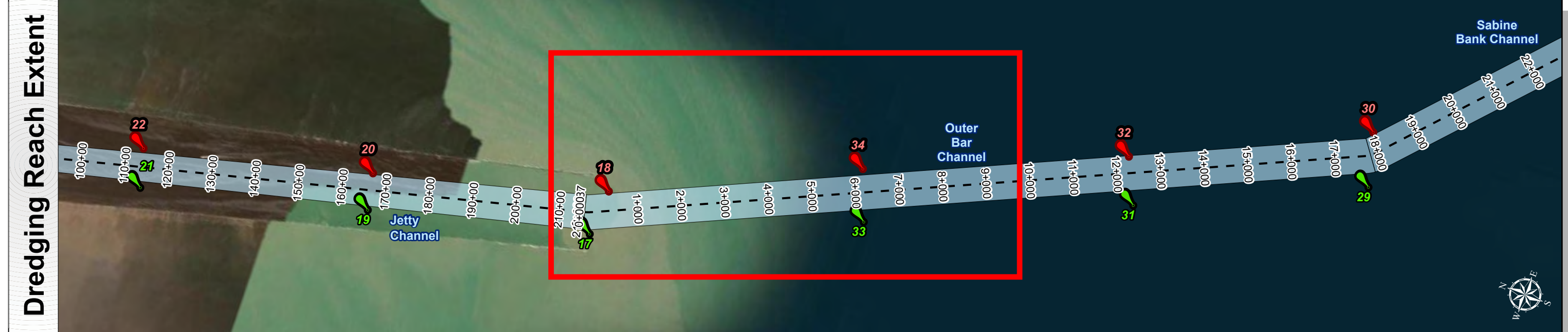
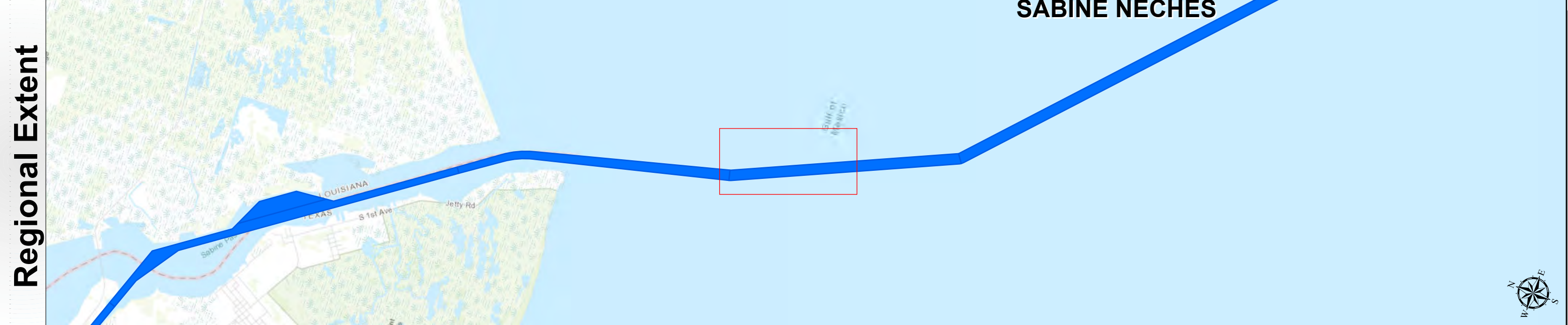
**SABINE NECHES**  
 Outer Bar Channel

Station: 18+091.09=0+000 to 214+13.87=0+000

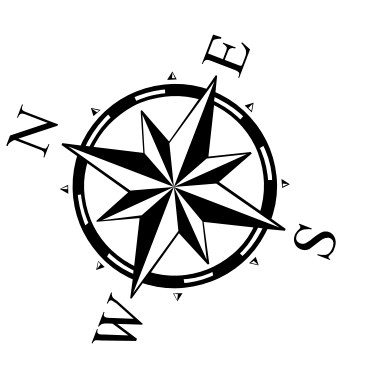
# Sabine Neches Waterway: Outer Bar Channel



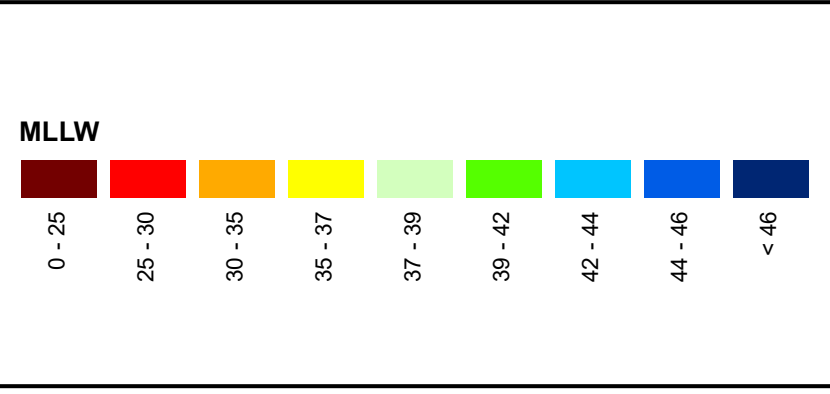
U.S. Army Corps of Engineers  
Galveston District



Latest Survey Collection Date: 10 December, 2024	Authorized Depth: -42ft.
Document Page: 2 of 2	Side Slope Ratio: (Rise : Run)
Scale: 1:4,000	PDF Print Date: 1/30/2025
Mapped by: m3odnmhg	
Additional Imagery info:	

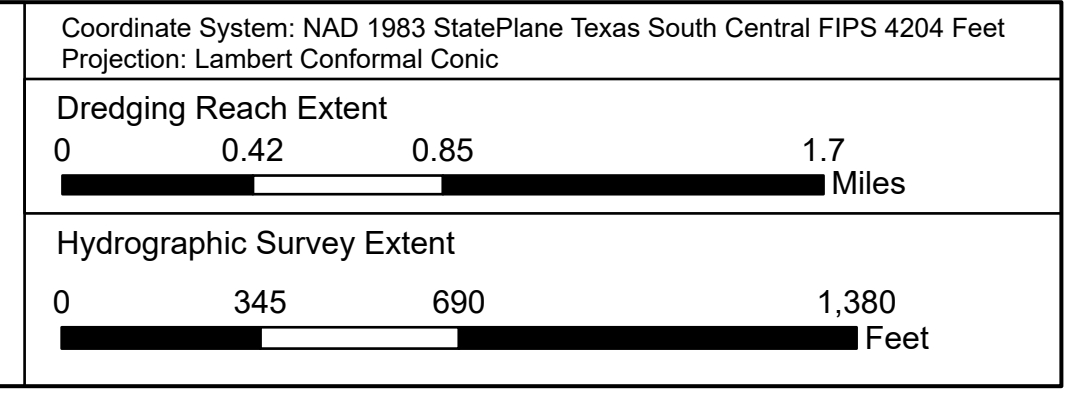


Channel Features	Aids to Navigation
--- Channel Center Line	Green Side Aids
— Channel Toe	Red Side Aids
↔ Channel Dimensions	Lights



**NOTES:**  
 1. Horizontal coordinates are referenced to Texas State Plane Coordinate System, South Central Zone NAD83 US Survey Feet.  
 2. Elevations are referenced to Mean Lower Low Water (MLLW) datum.  
 3. This project was designed by the Galveston District of the U.S. Army Corps of Engineers. The initials and signatures and registration designations of individuals appear on these project documents within the scope of their employment as required by 47CFR 115.1-18.152.  
 4. The information depicted on this survey map represents the results of surveys made on the dates indicated and can only be considered as indicating the general conditions existing at that time. These conditions are subject to rapid change due to shoaling events. A prudent mariner should not rely exclusively on the information provided here. Required by 33 CFR 209.325.  
 5. For the most up to date information please check our website at: <http://www.svg.usace.army.mil/Missions/Navigation/HydrographicSurveys/>  
 Service Layer Credits: World Topographic Map: Texas Parks & Wildlife, Esri, HERE, Garmin, USGS, NGA, EPA, USDA, NPS  
 World Imagery: Maxar  
 World Ocean Base: Esri, GEBCO, Garmin, NaturalVue

Additional Combined Survey Dates and Stationing:  
 Combined survey dates 20240520\_PR\_M39P434\_M36P400; 20240607\_PR\_M23P000\_M21P600;  
 20240607\_PR\_M36P000\_M23P000; 20241113\_PR\_M34P000\_M29P000;  
 20241123\_PR\_M25P000\_M29P000; 20241210\_PR\_M25P000\_M23P000



**HYDROGRAPHIC SURVEY**  
 U.S. ARMY ENGINEER DISTRICT  
 CORPS OF ENGINEERS  
 GALVESTON, TEXAS  
**SABINE NECHES**  
 Outer Bar Channel  
**Station: 18+091.09=0+000 to 214+13.87=0+00**