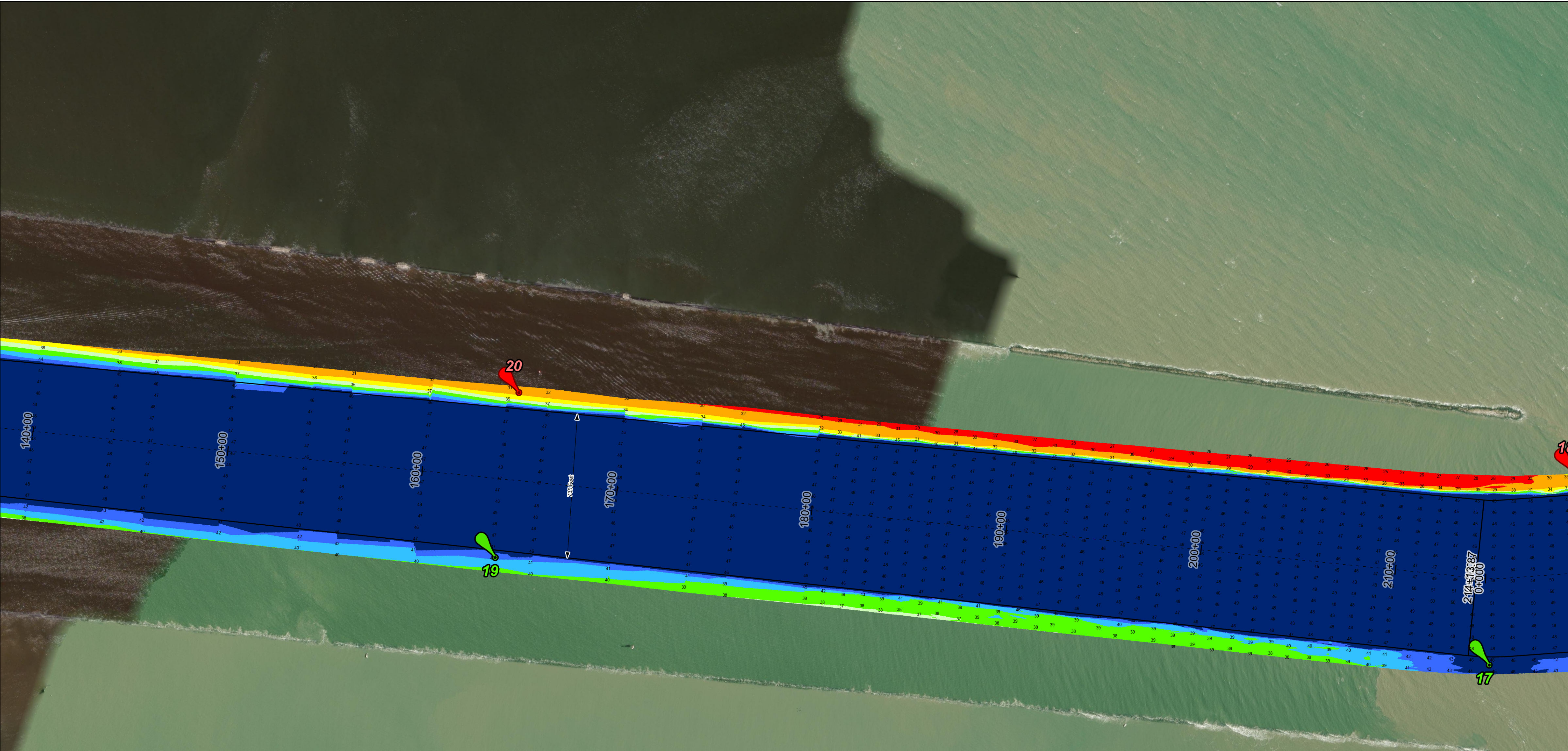
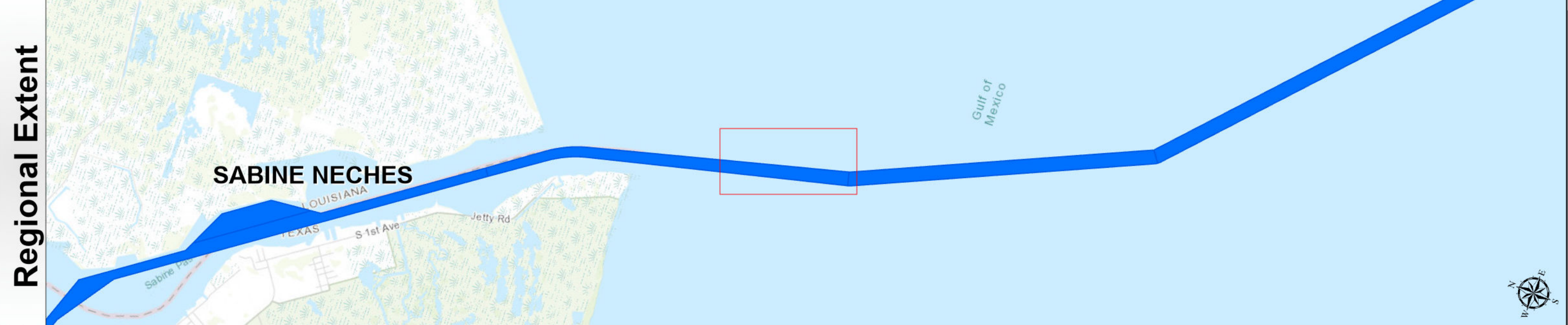


Sabine Neches Waterway: Jetty Channel



U.S. Army Corps of Engineers
Galveston District



Channel Features

- Channel Center Line
- Channel Toe
- Channel Dimensions

Aids to Navigation

- Green Side Aids
- Red Side Aids
- Lights

MLLW

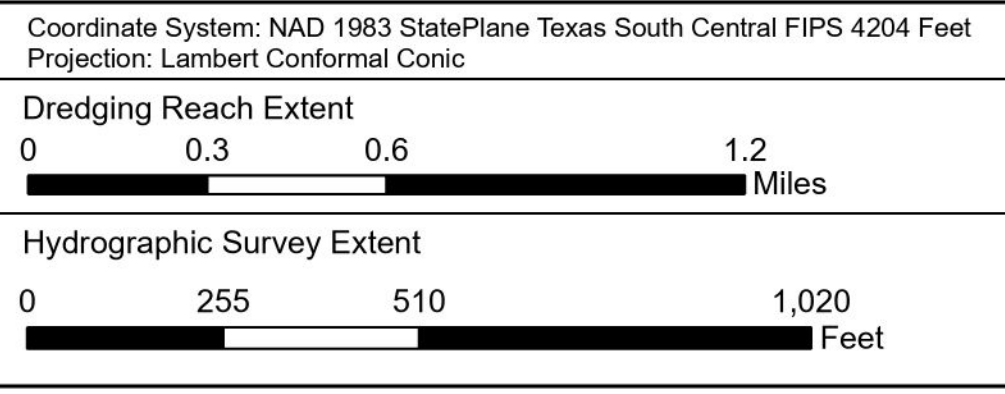
0 - 25	25 - 30	30 - 34	34 - 36	36 - 38	38 - 40	40 - 42	42 - 44	< 44
Red	Orange	Yellow	Light Green	Green	Light Blue	Blue	Dark Blue	Black

NOTES:

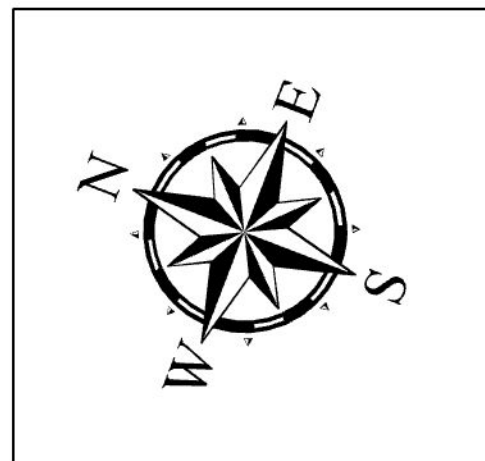
- Horizontal coordinates are referenced to Texas state plane coordinate system, south central zone nad83 us survey feet.
- Elevations are referenced to mean lower low tide (MLLW) datum.
- This project was designed by the Galveston District of the U.S. Army Corps of Engineers. The initials and signatures and registration designations of individuals appear on these project documents within the scope of their employment as required by er1110.1-4132.
- The information depicted on this survey map represents the results of surveys made on the dates indicated and can only be considered as indicating the general conditions existing at that time. These conditions are subject to rapid change due to shoaling events. A prudent mariner should not rely exclusively on the information provided here. Required by 33 CFR 209.225.
- For the most up to date information please check our website at: <http://www.swg.usace.army.mil/Missions/Navigation/HydrographicSurveys/>

Service Layer Credits: World Topographic Map: Texas Parks & Wildlife, Esri, HERE, Garmin, INCREMENT P, USGS, METI/NASA, NGA, EPA, USDA
World Imagery Source: Esri, Maxar, Earthstar Geographics, and the GIS User Community
World Imagery: Maxar, Microsoft
World Ocean Base: Esri, GEBCO, Garmin, NaturalVue

Additional Combined Survey Dates and Stationing:
 Combined survey dates 20250329_PR_M6P000_M18P000; 20241203_PR_M6P000_M5P000;
 20241204_PR_M5P000_0P000; 20241210_PR_M23P000_M18P000



Latest Survey Collection Date: 29 March 2025	Authorized Depth: -40ft.
Document Page: 1 of 3	Side Slope Ratio: (Rise : Run)
Scale: 1:3,000	PDF Print Date: 4/18/2025
Mapped by: m3odnbdg	
Additional Imagery info:	



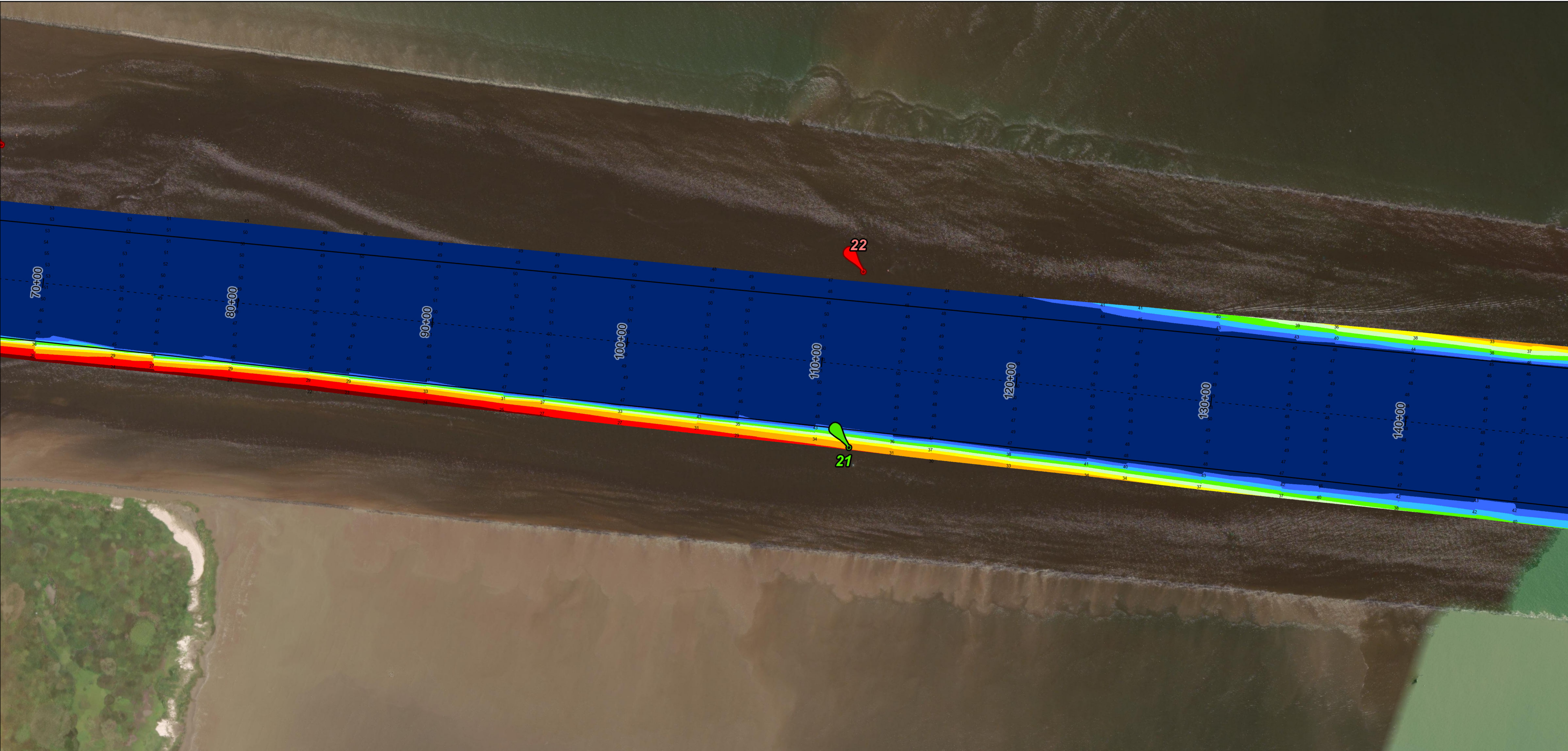
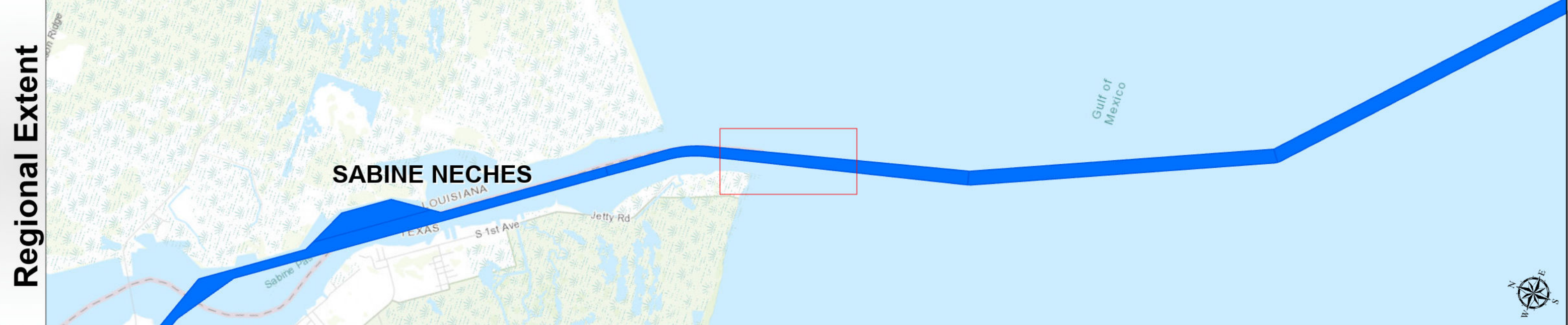
HYDROGRAPHIC SURVEY
 U.S. ARMY ENGINEER DISTRICT
 CORPS OF ENGINEERS
 GALVESTON, TEXAS

Station: 214+13.87=0+00 to 0+00
 SABINE NECHES
 Jetty Channel

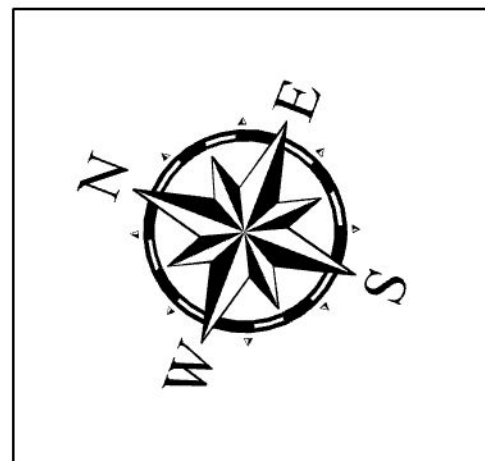
Sabine Neches Waterway: Jetty Channel



U.S. Army Corps of Engineers
Galveston District



Latest Survey Collection Date: 29 March 2025	Authorized Depth: -40ft.
Document Page: 2 of 3	Side Slope Ratio: (Rise : Run)
Scale: 1:3,000	PDF Print Date: 4/18/2025
Mapped by: m3odnbdg	
Additional Imagery info:	



Channel Features

- Channel Center Line
- Channel Toe
- ↔ Channel Dimensions

Aids to Navigation

- Green Side Aids
- Red Side Aids
- Lights

MLLW

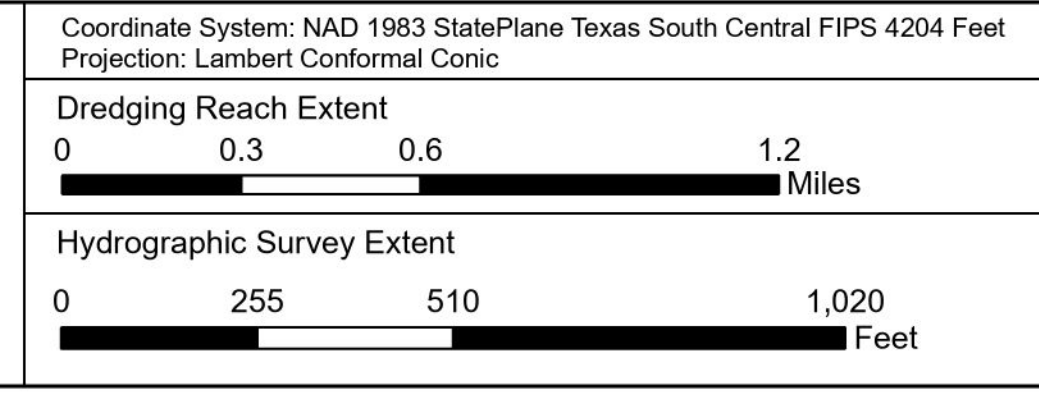
0 - 25
25 - 30
30 - 34
34 - 36
36 - 38
38 - 40
40 - 42
42 - 44
< 44

NOTES:

- Horizontal coordinates are referenced to Texas state plane coordinate system, south central zone nad83 us survey feet.
- Elevations are referenced to mean lower low tide (MLLW) datum.
- This project was designed by the Galveston District of the U.S. Army Corps of Engineers. The initials and signatures and registration designations of individuals appear on these project documents within the scope of their employment as required by er1110.1-8132.
- The information depicted on this survey map represents the results of surveys made on the dates indicated and can only be considered as indicating the general conditions existing at that time. These conditions are subject to rapid change due to shoaling events. A prudent mariner should not rely exclusively on the information provided here. Required by 33 CFR 209.225.
- For the most up to date information please check our website at: <http://www.swg.usace.army.mil/Missions/Navigation/HydrographicSurveys/>

Service Layer Credits: World Topographic Map: Texas Parks & Wildlife, Esri, HERE, Garmin, INCREMENT P, USGS, METI/NASA, NGA, EPA, USDA
World Imagery Source: Esri, Maxar, Earthstar Geographics, and the GIS User Community
World Imagery: Maxar, Microsoft
World Ocean Base: Esri, GEBCO, Garmin, NaturalVue

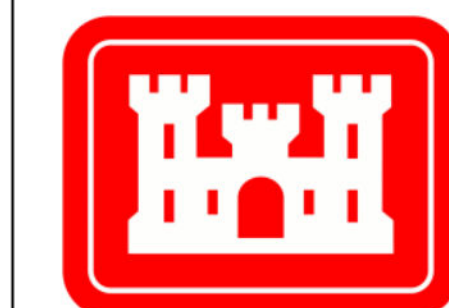
Additional Combined Survey Dates and Stationing:
 Combined survey dates 20250329_PR_M6P000_M18P000; 20241203_PR_M6P000_M5P000;
 20241204_PR_M5P000_0P000; 20241210_PR_M23P000_M18P000



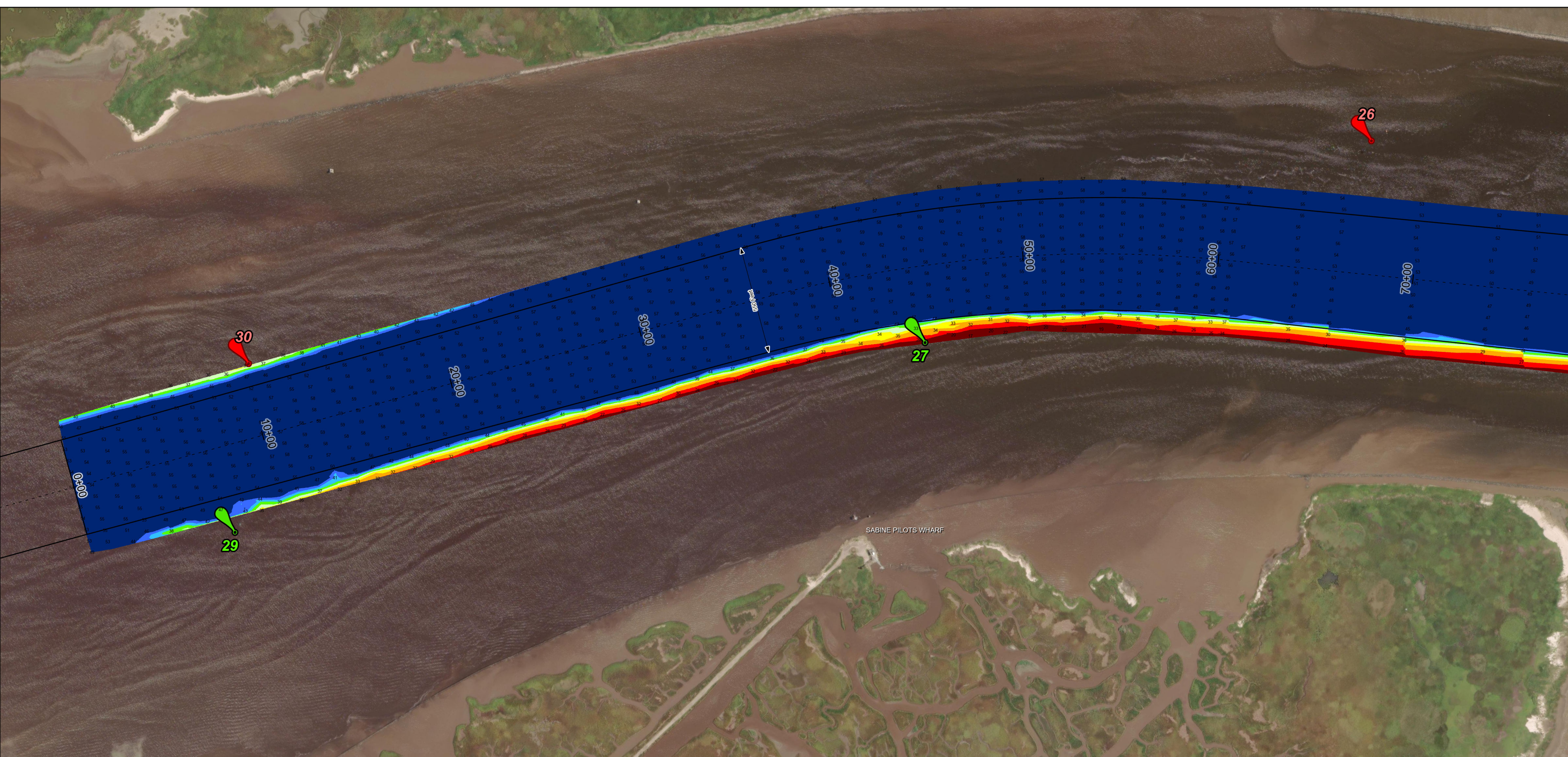
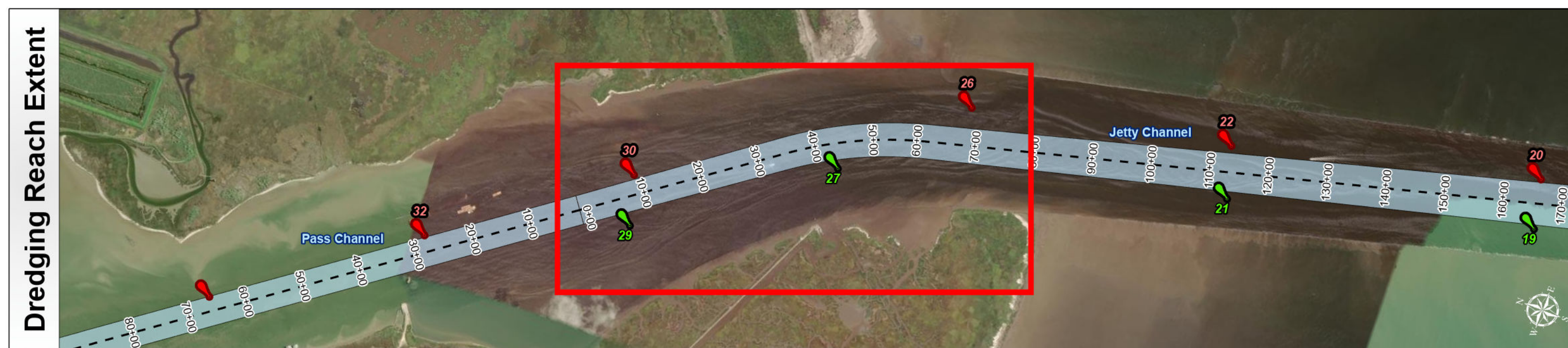
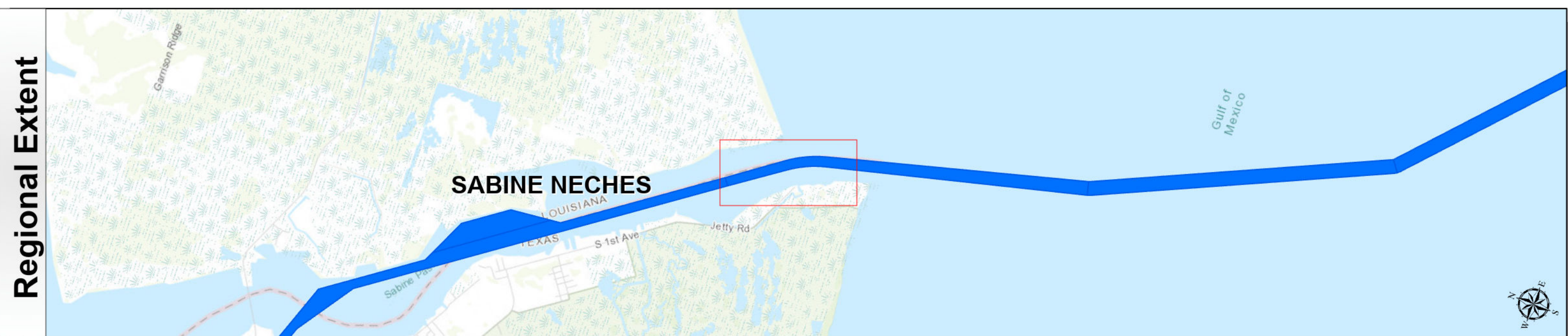
HYDROGRAPHIC SURVEY
 U.S. ARMY ENGINEER DISTRICT
 CORPS OF ENGINEERS
 GALVESTON, TEXAS

Station: 214+13.87=0+00 to 0+00
 SABINE NECHES
 Jetty Channel

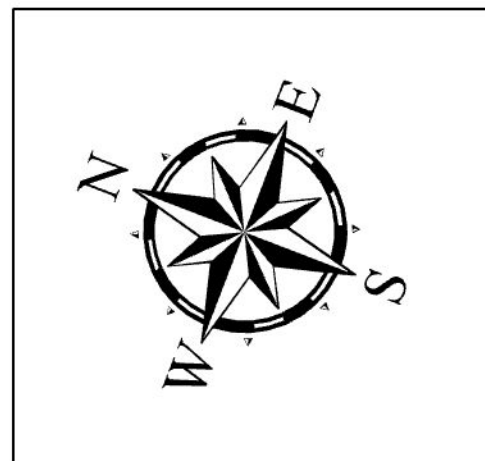
Sabine Neches Waterway: Jetty Channel



U.S. Army Corps of Engineers
Galveston District



Latest Survey Collection Date: 29 March 2025	Authorized Depth: -40ft.
Document Page: 3 of 3	Side Slope Ratio: (Rise : Run)
Scale: 1:3,000	Website Index Number: 14
Mapped by: m3odnbdg	PDF Print Date: 4/18/2025
Additional Imagery info:	



Channel Features

- Channel Center Line
- Channel Toe
- Channel Dimensions

Aids to Navigation

- Green Side Aids
- Red Side Aids
- Lights

MLLW

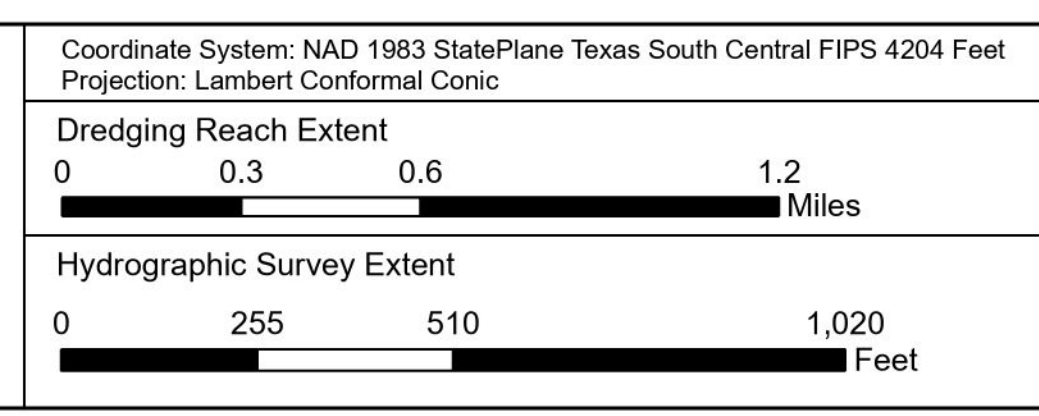
0 - 25	25 - 30	30 - 34	34 - 36	36 - 38	38 - 40	40 - 42	42 - 44	< 44
--------	---------	---------	---------	---------	---------	---------	---------	------

NOTES:

- Horizontal coordinates are referenced to Texas state plane coordinate system, south central zone nad83 us survey feet.
- Elevations are referenced to mean lower low tide (MLLW) datum.
- This project was designed by the Galveston District of the U.S. Army Corps of Engineers. The initials and signatures and registration designations of individuals appear on these project documents within the scope of their employment as required by er1110.1-4132.
- The information depicted on this survey map represents the results of surveys made on the dates indicated and can only be considered as indicating the general conditions existing at that time. These conditions are subject to rapid change due to shoaling events. A prudent mariner should not rely exclusively on the information provided here. Required by 33 CFR 209.225.
- For the most up to date information please check our website at: <http://www.swg.usace.army.mil/Missions/Navigation/HydrographicSurveys/>

Service Layer Credits: World Topographic Map, Texas Parks & Wildlife, Esri, HERE, Garmin, INCREMENT P, USGS, METI/NASA, NGA, EPA, USDA
World Imagery Source: Esri, Maxar, Earthstar Geographics, and the GIS User Community
World Imagery: Maxar, Microsoft
World Ocean Base: Esri, GEBCO, Garmin, NaturalVue

Additional Combined Survey Dates and Stationing:
 Combined survey dates 20250329_PR_M6P000_M18P000; 20241203_PR_M6P000_M5P000;
 20241204_PR_M5P000_0P000; 20241210_PR_M23P000_M18P000



HYDROGRAPHIC SURVEY
 U.S. ARMY ENGINEER DISTRICT
 CORPS OF ENGINEERS
 GALVESTON, TEXAS

Station: 214+13.87=0+00 to 0+00
 SABINE NECHES
 Jetty Channel