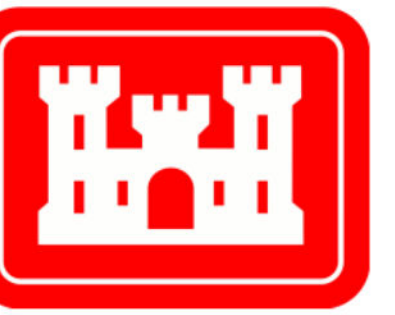
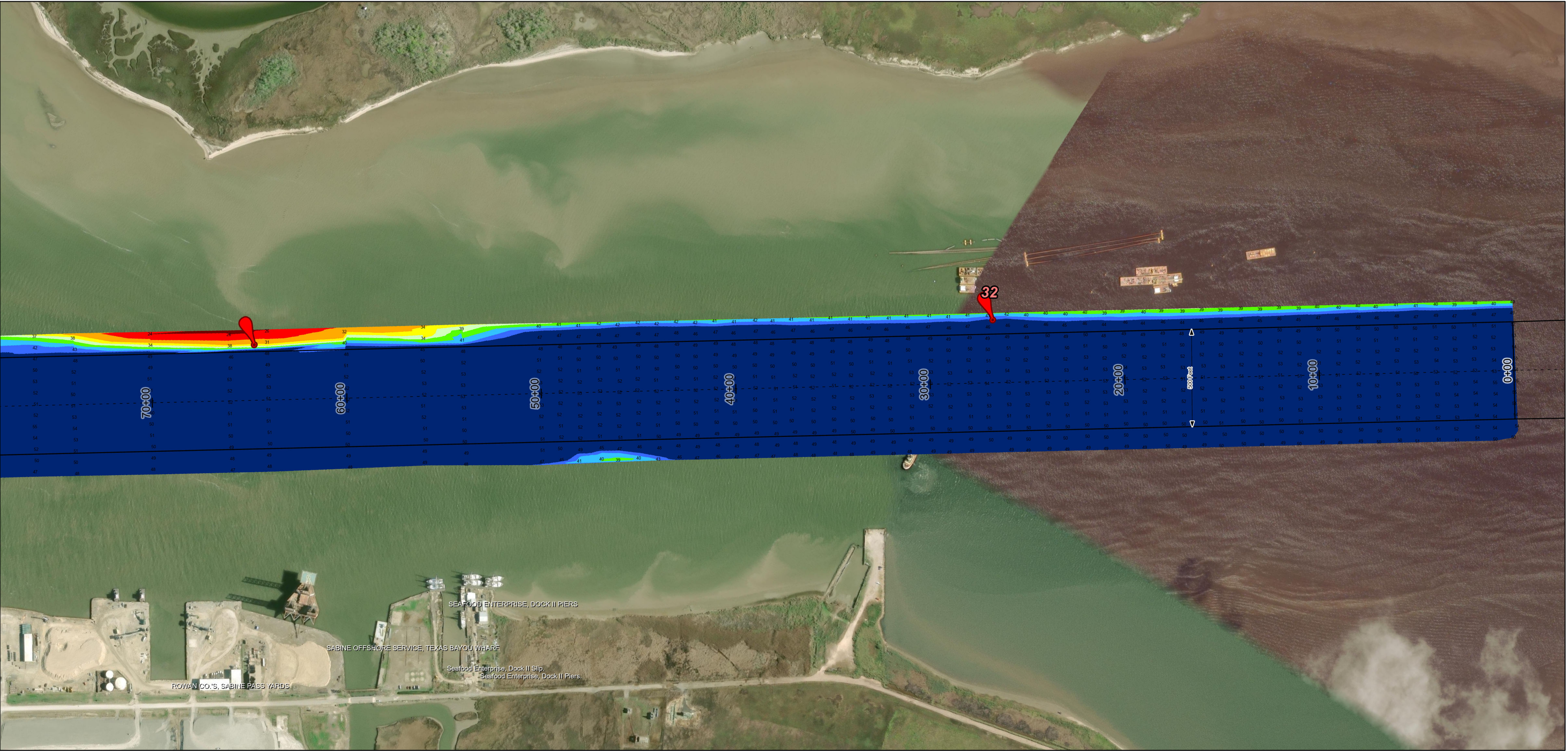
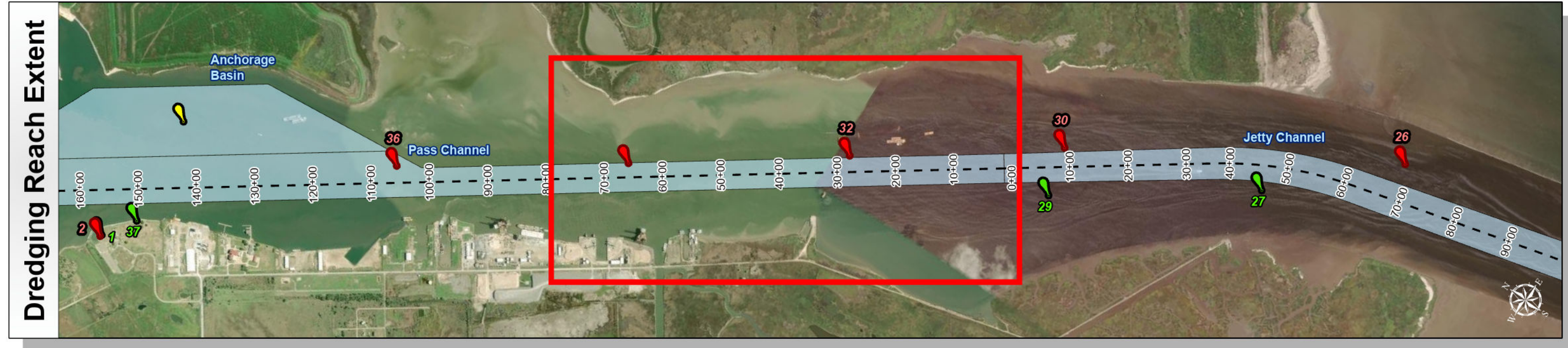
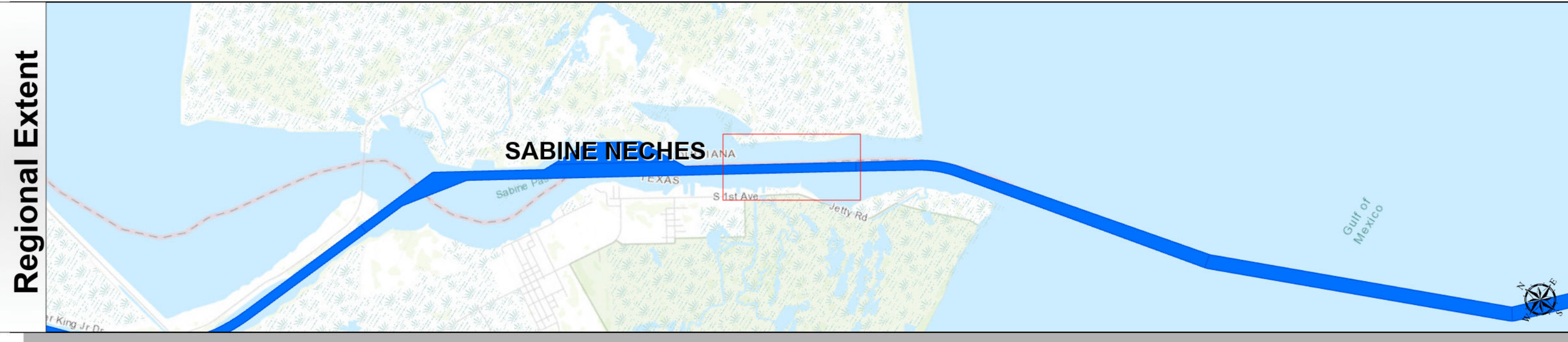


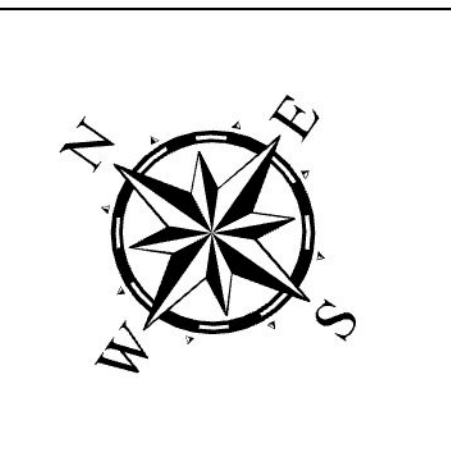
# Sabine Neches Waterway: Pass Channel



U.S. Army Corps of Engineers  
Galveston District



Latest Survey Collection Date: 30 March 2025	Authorized Depth: -40ft.
Document Page: 1 of 4	Side Slope Ratio: (Rise : Run)
Scale: 1:3,000	PDF Print Date: 4/18/2025
Mapped by: m3odnbdg	
Additional Imagery info:	



**Channel Features**

- Channel Center Line
- Channel Toe
- Channel Dimensions

**Aids to Navigation**

- Green Side Aids
- Red Side Aids
- Lights

**MLLW**

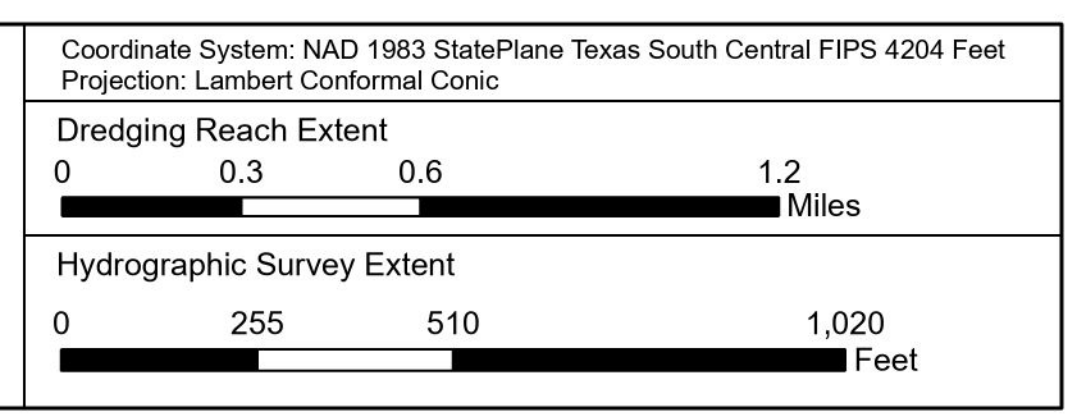
0 - 25	25 - 30	30 - 34	34 - 36	36 - 38	38 - 40	40 - 42	42 - 44	< 44
--------	---------	---------	---------	---------	---------	---------	---------	------

**NOTES:**

- Horizontal coordinates are referenced to Texas state plane coordinate system, south central zone nad83 us survey feet.
- Elevations are referenced to mean lower low tide (MLLW) datum.
- This project was designed by the Galveston District of the U.S. Army Corps of Engineers. The initials and signatures and registration designations of individuals appear on these project documents within the scope of their employment as required by er1110.1-8132.
- The information depicted on this survey map represents the results of surveys made on the dates indicated and can only be considered as indicating the general conditions existing at that time. These conditions are subject to rapid change due to shoaling events. A prudent mariner should not rely exclusively on the information provided here. Required by 33 CFR 209.225.
- For the most up to date information please check our website at: <http://www.swg.usace.army.mil/Missions/Navigation/HydrographicSurveys/>

Service Layer Credits: World Topographic Map, Texas Parks & Wildlife, Esri, HERE, Garmin, INCREMENT P, USGS, METI/NASA, NGA, EPA, USDA, World Imagery, Source: Esri, Maxar, Earthstar Geographics, and the GIS User Community, World Imagery, Maxar, Microsoft, World Ocean Base: Esri, GEBCO, Garmin, NaturalVue

**Additional Combined Survey Dates and Stationing:**  
 Combined survey dates 20250330\_PR\_0P000\_15P000; 20240319\_PR\_8P000\_29P625;  
 20250116\_PR\_23P000\_25P000; 20250116\_PR\_25P000\_29P625

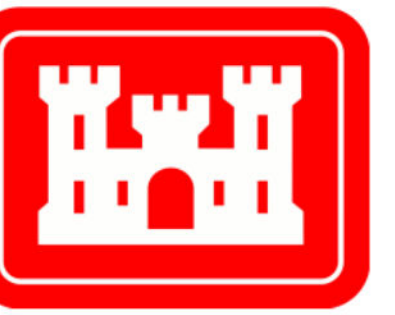


**HYDROGRAPHIC SURVEY**  
 U.S. ARMY ENGINEER DISTRICT  
 CORPS OF ENGINEERS  
 GALVESTON, TEXAS

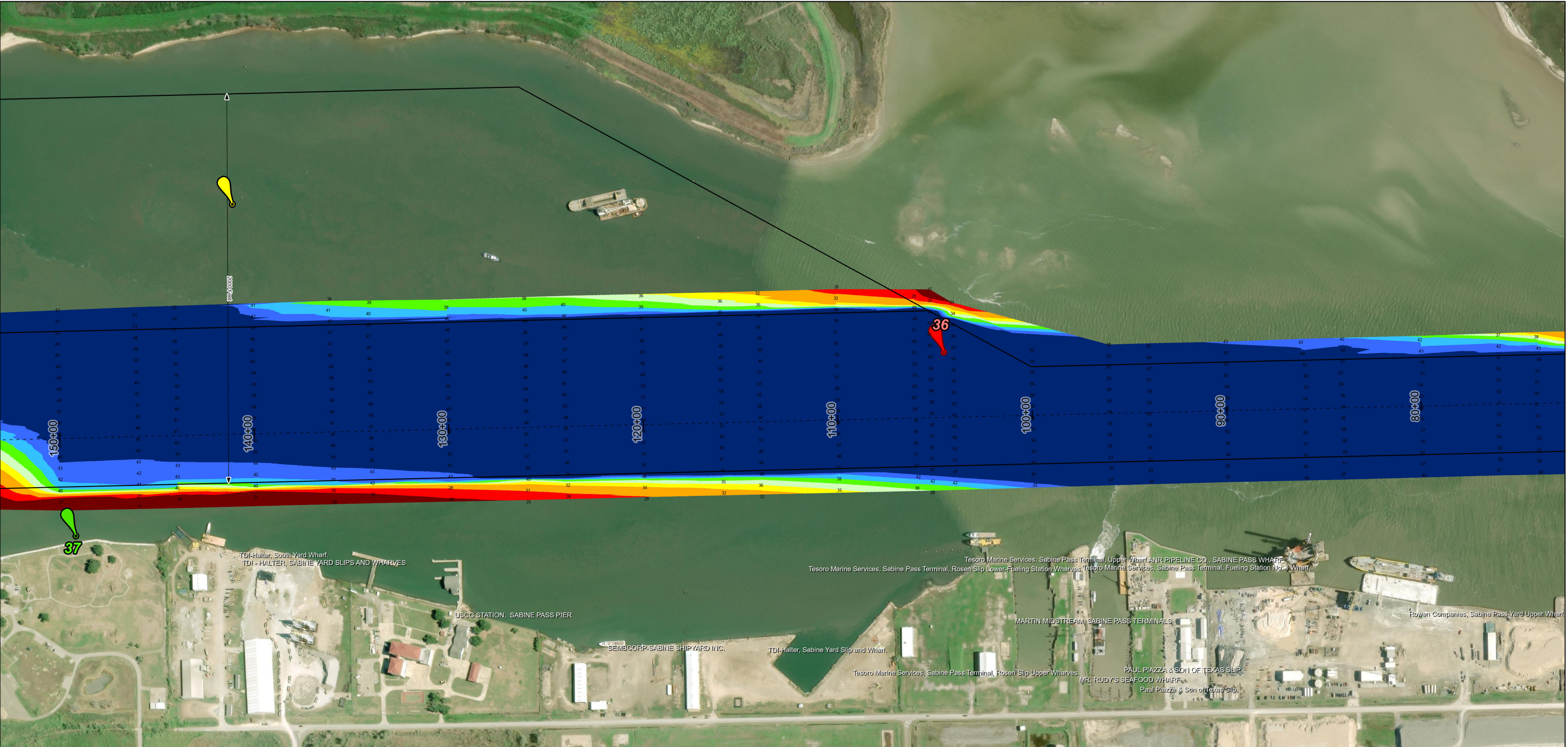
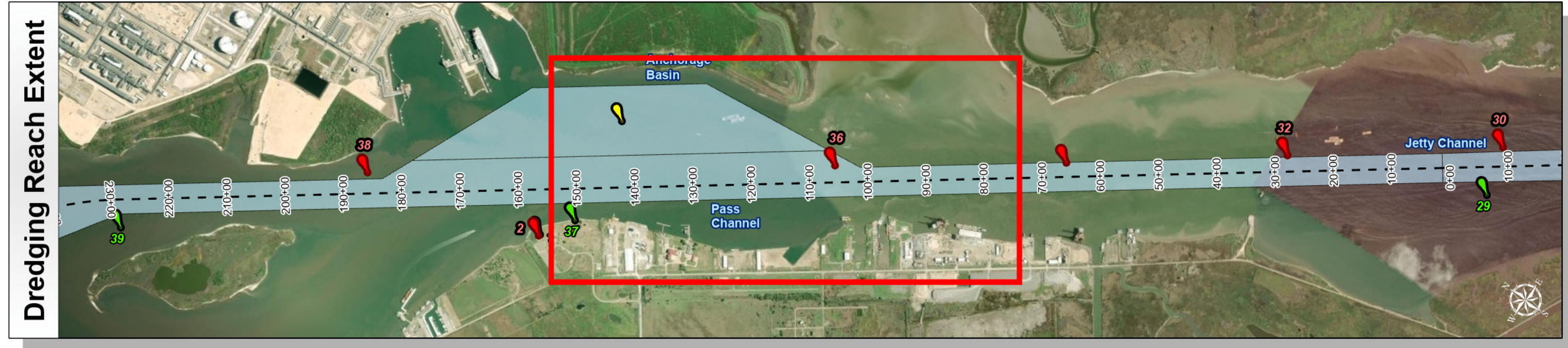
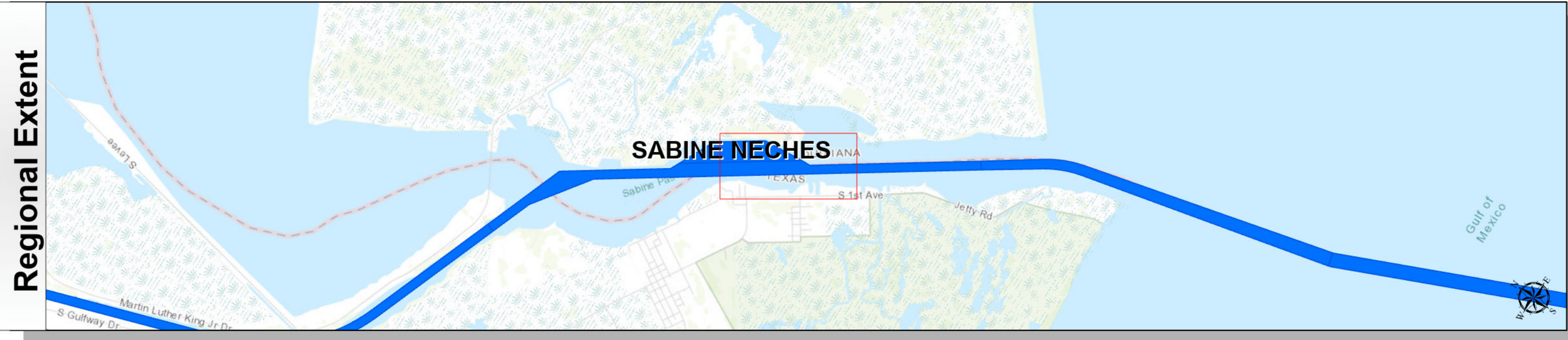
**Station: 0+00 to 296+24.44-0+00**  
**SABINE NECHES**  
 Pass Channel



# Sabine Neches Waterway: Pass Channel



U.S. Army Corps of Engineers  
Galveston District



Latest Survey Collection Date: 30 March 2025	Authorized Depth: -40ft.
Document Page: 2 of 4	Side Slope Ratio: (Rise : Run)
Scale: 1:3,000	PDF Print Date: 4/18/2025
Mapped by: m3odnbdg	
Additional Imagery info:	



**Channel Features**

- Channel Center Line
- Channel Toe
- Channel Dimensions

**Aids to Navigation**

- Green Side Aids
- Red Side Aids
- Lights

**MLLW**

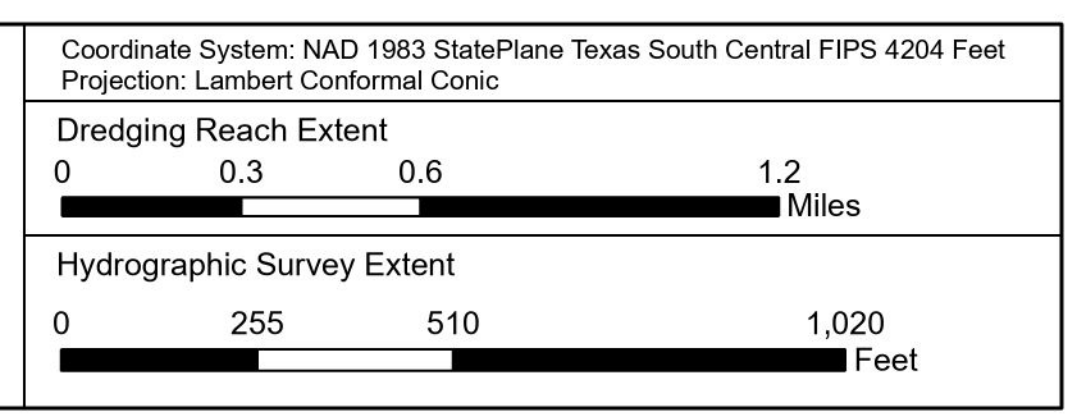
0 - 25	25 - 30	30 - 34	34 - 36	36 - 38	38 - 40	40 - 42	42 - 44	< 44
--------	---------	---------	---------	---------	---------	---------	---------	------

**NOTES:**

- Horizontal coordinates are referenced to Texas state plane coordinate system, south central zone nad83 us survey feet.
- Elevations are referenced to mean lower low tide (MLLW) datum.
- This project was designed by the Galveston District of the U.S. Army Corps of Engineers. The initials and signatures and registration designations of individuals appear on these project documents within the scope of their employment as required by 47 CFR 11.101-1.4132.
- The information depicted on this survey map represents the results of surveys made on the dates indicated and can only be considered as indicating the general conditions existing at that time. These conditions are subject to rapid change due to shoaling events. A prudent mariner should not rely exclusively on the information provided here. Required by 33 CFR 209.225.
- For the most up to date information please check our website at: <http://www.swg.usace.army.mil/Missions/Navigation/HydrographicSurveys/>

Service Layer Credits: World Topographic Map, Texas Parks & Wildlife, Esri, HERE, Garmin, INCREMENT P, USGS, METI/NASA, NGA, EPA, USDA  
World Imagery Source: Esri, Maxar, Earthstar Geographics, and the GIS User Community  
World Imagery: Maxar, Microsoft  
World Ocean Base: Esri, GEBCO, Garmin, NaturalVue

**Additional Combined Survey Dates and Stationing:**  
 Combined survey dates 20250330\_PR\_0P000\_15P000; 20240319\_PR\_8P000\_29P625;  
 20250116\_PR\_23P000\_25P000; 20250116\_PR\_25P000\_29P625

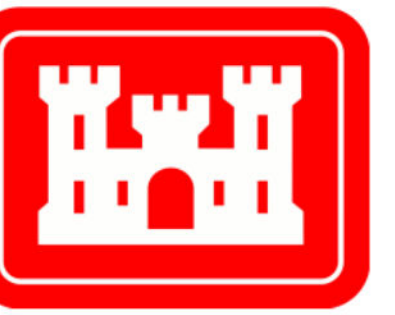


**HYDROGRAPHIC SURVEY**  
 U.S. ARMY ENGINEER DISTRICT  
 CORPS OF ENGINEERS  
 GALVESTON, TEXAS

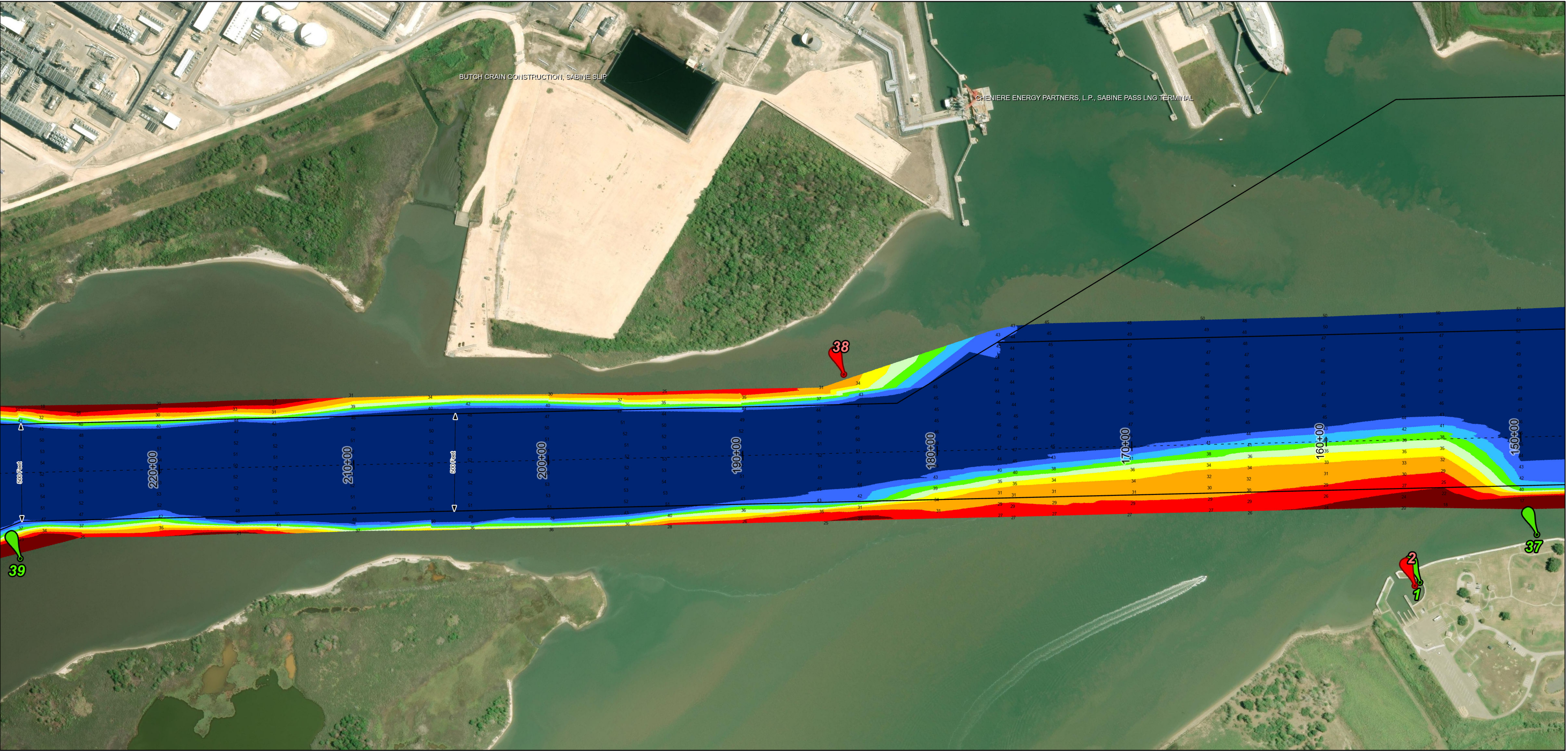
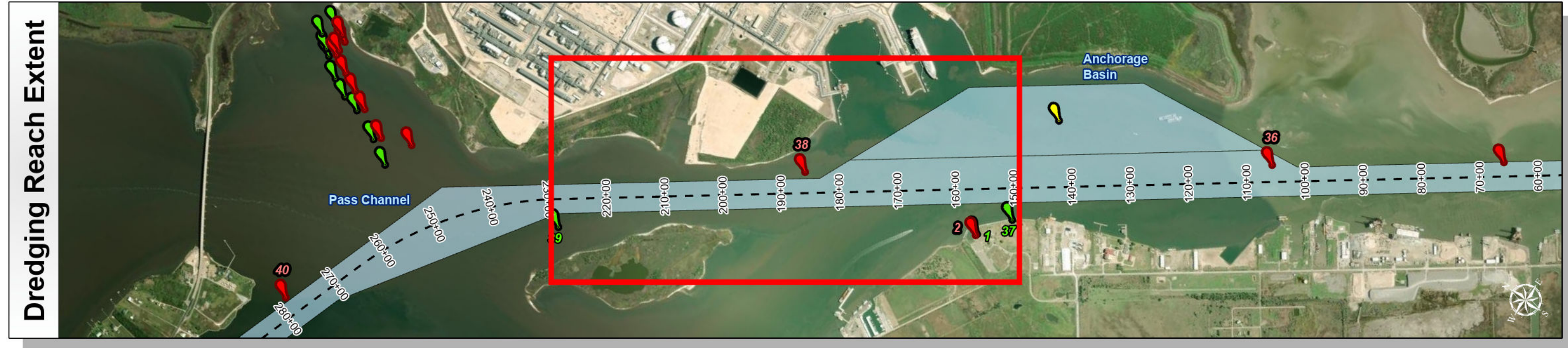
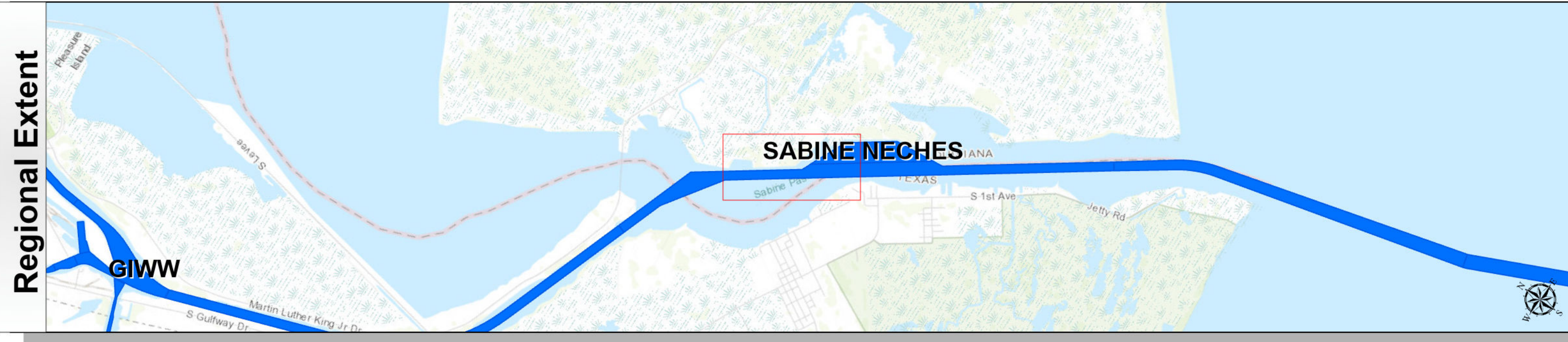
**Station: 0+00 to 296+24.44+0+00**  
**SABINE NECHES**  
 Pass Channel



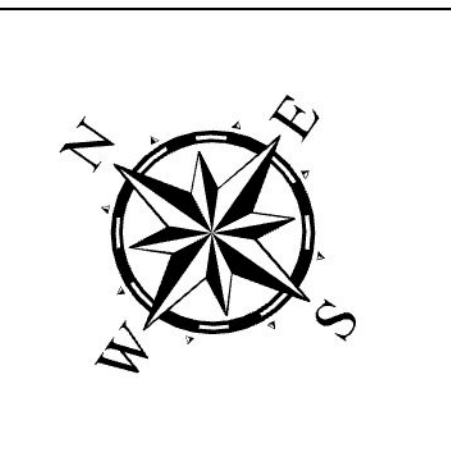
# Sabine Neches Waterway: Pass Channel



U.S. Army Corps of Engineers  
Galveston District



Latest Survey Collection Date: 30 March 2025	Authorized Depth: -40ft.
Document Page: 3 of 4	Side Slope Ratio: (Rise : Run)
Scale: 1:3,000	Website Index Number: 17
Mapped by: m3odnbdg	PDF Print Date: 4/18/2025
Additional Imagery info:	



**Channel Features**

- Channel Center Line
- Channel Toe
- Channel Dimensions

**Aids to Navigation**

- Green Side Aids
- Red Side Aids
- Lights

**MLLW**

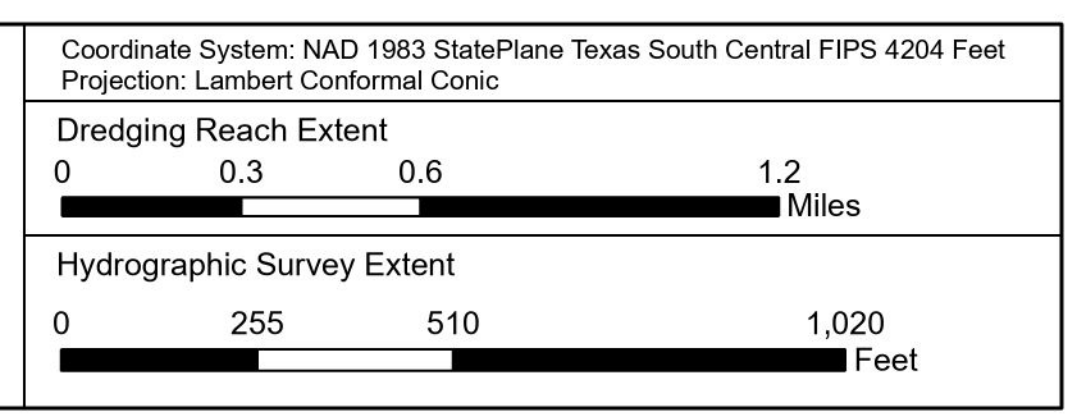
0 - 25
25 - 30
30 - 34
34 - 36
36 - 38
38 - 40
40 - 42
42 - 44
< 44

**NOTES:**

- Horizontal coordinates are referenced to Texas state plane coordinate system, south central zone nad83 us survey feet.
- Elevations are referenced to mean lower low tide (MLLW) datum.
- This project was designed by the Galveston District of the U.S. Army Corps of Engineers. The initials and signatures and registration designations of individuals appear on these project documents within the scope of their employment as required by er1110-1, §132.
- The information depicted on this survey map represents the results of surveys made on the dates indicated and can only be considered as indicating the general conditions existing at that time. These conditions are subject to rapid change due to shoaling events. A prudent mariner should not rely exclusively on the information provided here. Required by 33 CFR 209.225.
- For the most up to date information please check our website at: <http://www.swg.usace.army.mil/Missions/Navigation/HydrographicSurveys/>

Service Layer Credits: World Topographic Map, Texas Parks & Wildlife, Esri, HERE, Garmin, INCREMENT P, USGS, METI/NASA, NGA, EPA, USDA  
World Imagery Source: Esri, Maxar, Earthstar Geographics, and the GIS User Community  
World Imagery: Maxar, Microsoft  
World Ocean Base: Esri, GEBCO, Garmin, NaturalVue

Additional Combined Survey Dates and Stationing:  
 Combined survey dates 20250330\_PR\_0P000\_15P000; 20240319\_PR\_8P000\_29P625;  
 20250116\_PR\_23P000\_25P000; 20250116\_PR\_25P000\_29P625

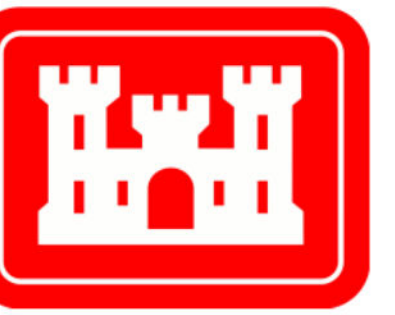


**HYDROGRAPHIC SURVEY**  
 U.S. ARMY ENGINEER DISTRICT  
 CORPS OF ENGINEERS  
 GALVESTON, TEXAS

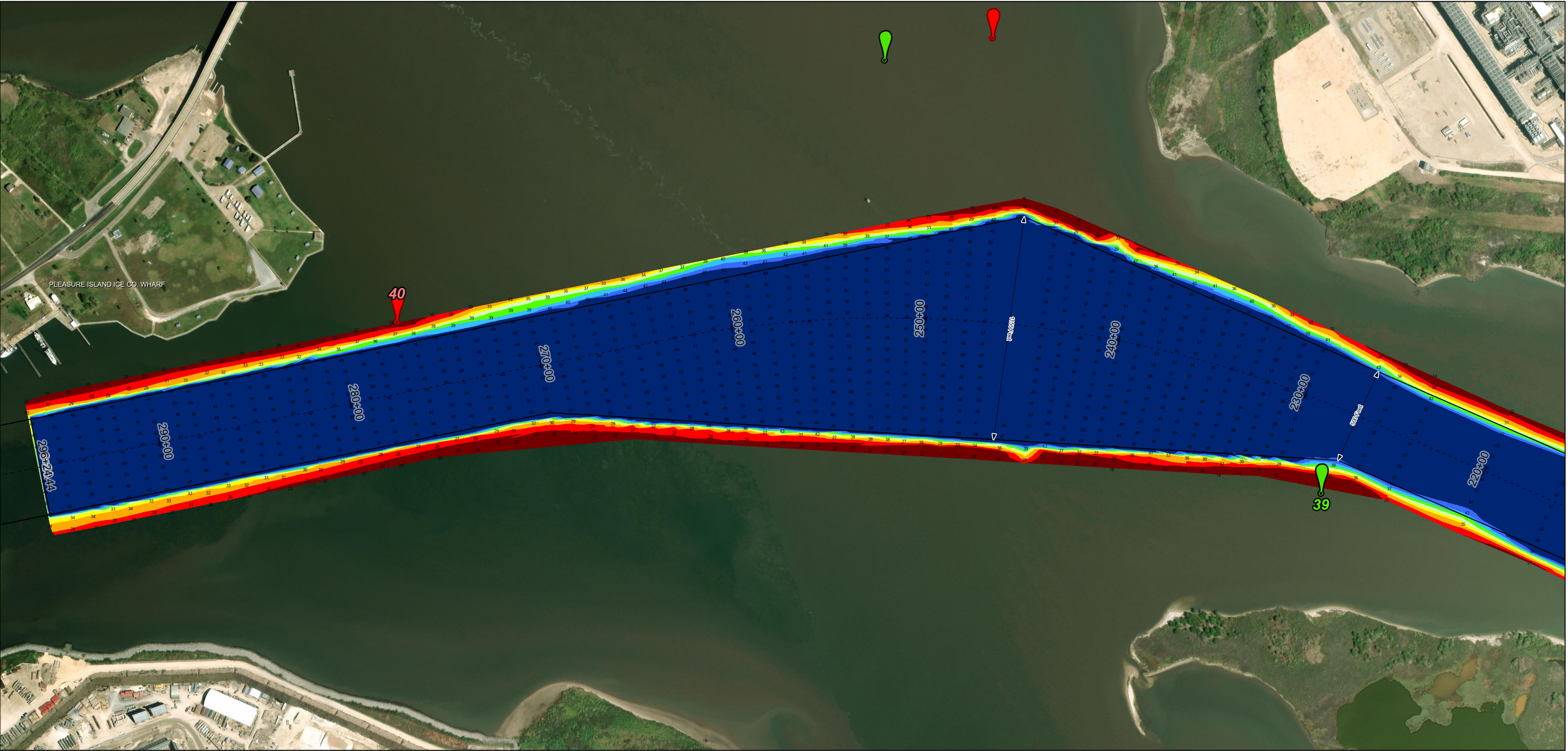
**Station: 0+00 to 296+24.44=0+00**  
**SABINE NECHES**  
 Pass Channel



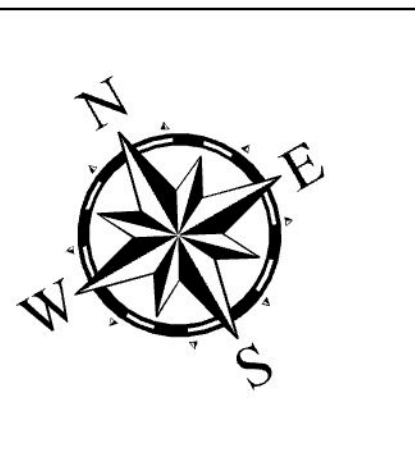
# Sabine Neches Waterway: Pass Channel



U.S. Army Corps of Engineers  
Galveston District



Latest Survey Collection Date: 30 March 2025	Authorized Depth: -40ft.
Document Page: 4 of 4	Side Slope Ratio: (Rise : Run)
Scale: 1:3,000	PDF Print Date: 4/18/2025
Mapped by: m3odnbdg	
Additional Imagery info:	



**Channel Features**

- Channel Center Line
- Channel Toe
- Channel Dimensions

**Aids to Navigation**

- Green Side Aids
- Red Side Aids
- Lights

**MLLW**

0 - 25	25 - 30	30 - 34	34 - 36	36 - 38	38 - 40	40 - 42	42 - 44	< 44
--------	---------	---------	---------	---------	---------	---------	---------	------

**NOTES:**

- Horizontal coordinates are referenced to Texas state plane coordinate system, south central zone nad83 us survey feet.
- Elevations are referenced to mean lower low tide (MLLW) datum.
- This project was designed by the Galveston District of the U.S. Army Corps of Engineers. The initials and signatures and registration designations of individuals appear on these project documents within the scope of their employment as required by er1110.1-4132.
- The information depicted on this survey map represents the results of surveys made on the dates indicated and can only be considered as indicating the general conditions existing at that time. These conditions are subject to rapid change due to shoaling events. A prudent mariner should not rely exclusively on the information provided here. Required by 33 CFR 209.225.
- For the most up to date information please check our website at: <http://www.swg.usace.army.mil/Missions/Navigation/HydrographicSurveys/>

Service Layer Credits: World Topographic Map: Texas Parks & Wildlife, Esri, HERE, Garmin, INCREMENT P, USGS, METI/NASA, NGA, EPA, USDA  
World Imagery Source: Esri, Maxar, Earthstar Geographics, and the GIS User Community  
World Imagery: Maxar, Microsoft  
World Ocean Base: Esri, GEBCO, Garmin, NaturalVue

**Additional Combined Survey Dates and Stationing:**  
 Combined survey dates 20250330\_PR\_0P000\_15P000; 20240319\_PR\_8P000\_29P625;  
 20250116\_PR\_23P000\_25P000; 20250116\_PR\_25P000\_29P625

Coordinate System: NAD 1983 StatePlane Texas South Central FIPS 4204 Feet  
 Projection: Lambert Conformal Conic

**Dredging Reach Extent**

**Hydrographic Survey Extent**

**HYDROGRAPHIC SURVEY**  
 U.S. ARMY ENGINEER DISTRICT  
 CORPS OF ENGINEERS  
 GALVESTON, TEXAS

**Station: 0+00 to 296+24.44=0+00**  
**SABINE NECHES**  
 Pass Channel