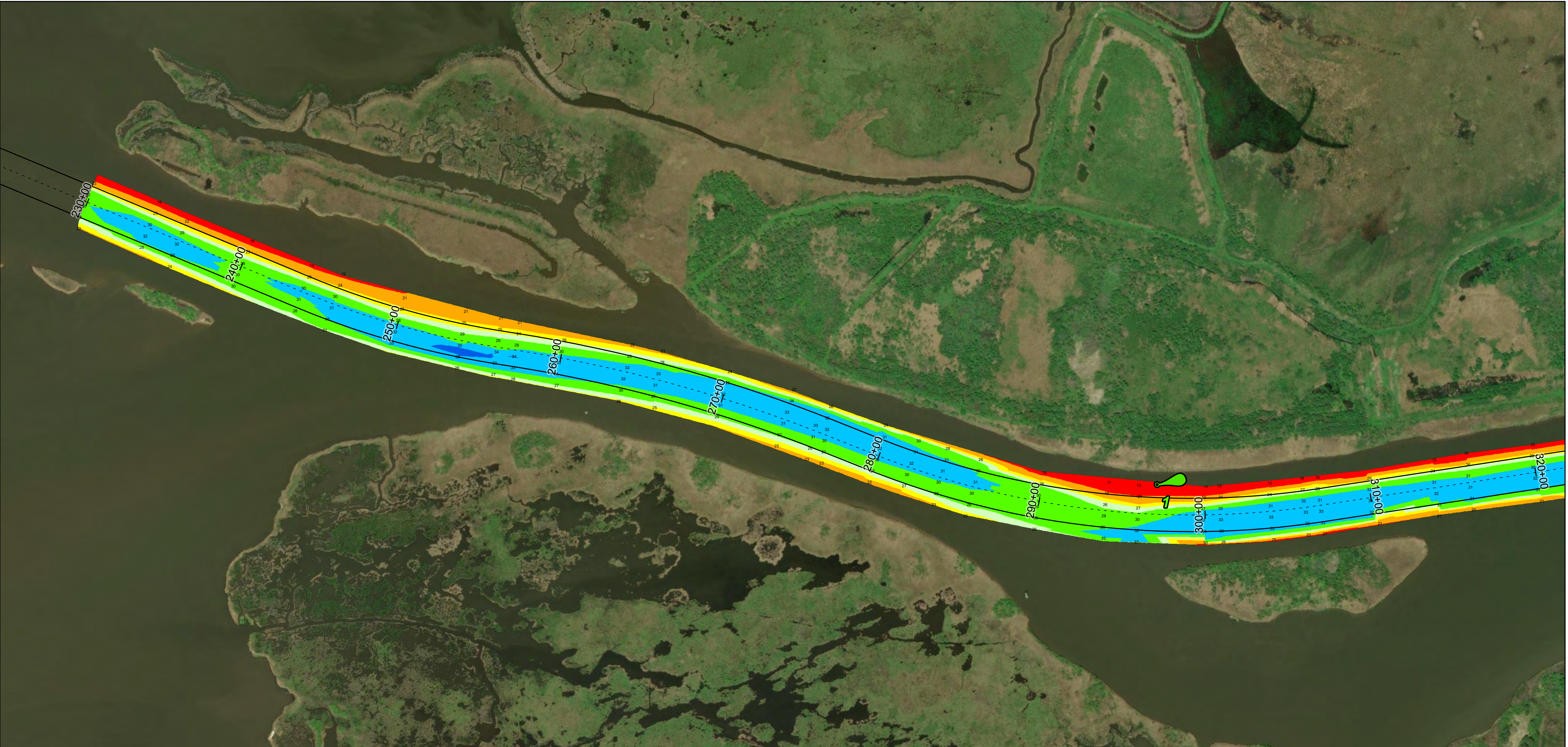
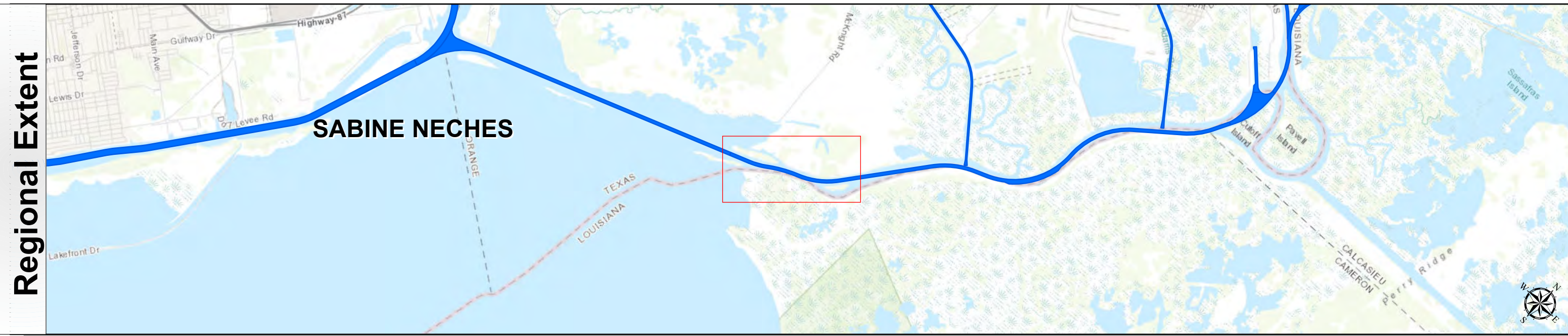


Sabine Neches Waterway: Mouth to Orange Municipal Slip



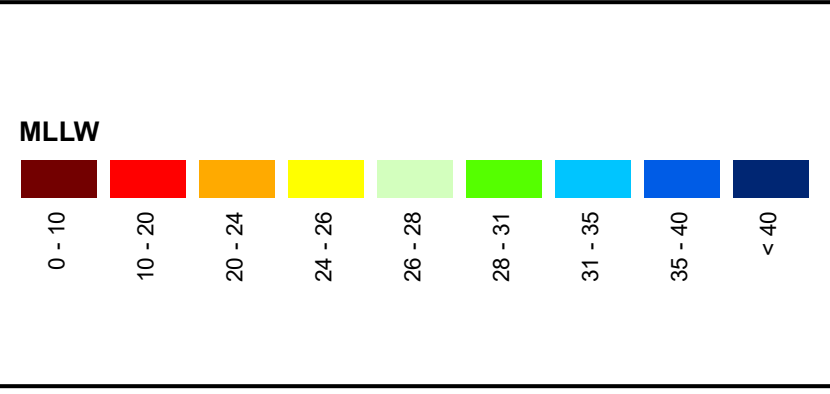
U.S. Army Corps of Engineers
Galveston District



Latest Survey Collection Date: 25 March 2025	Authorized Depth: -31ft.
Document Page: 1 of 4	Width Range: 200ft to 300ft
Scale: 1:3,500	Side Slope Ratio: (Rise : Run)
Mapped by: M3AOXPAC	PDF Print Date: 4/17/2025
Additional Imagery info:	



Channel Features	Aids to Navigation
Channel Center Line	Green Side Aids
Channel Toe	Red Side Aids
Channel Dimensions	Lights



NOTES:
 1. Horizontal coordinates are referenced to Texas State Plane Coordinate System, South Central Zone NAD83 US Survey Feet.
 2. Elevations are referenced to Mean Lower Low Water (MLLW) datum.
 3. This project was designed by the Galveston District of the U.S. Army Corps of Engineers. The initials and signatures and registration designations of individuals appear on these project documents within the scope of their employment as required by er1110-1-8132.
 4. The information depicted on this survey map represents the results of surveys made on the dates indicated and can only be considered as indicating the general conditions existing at that time. These conditions are subject to rapid change due to shoaling events. A prudent mariner should not rely exclusively on the information provided here. Required by 33 CFR 209.325.
 5. For the most up to date information please check our website at: <http://www.svg.usace.army.mil/Missions/Navigation/HydrographicSurveys/>
 Service Layer Credits: World Imagery: Source: Esri, Maxar, Earthstar Geographics, and the GIS User Community
 World Topographic Map: Texas Parks & Wildlife, Esri, HERE, Garmin, USGS, NGA, EPA, USDA, NPS
 World Ocean Base: Esri, GEBCO, Garmin, NaturalVue

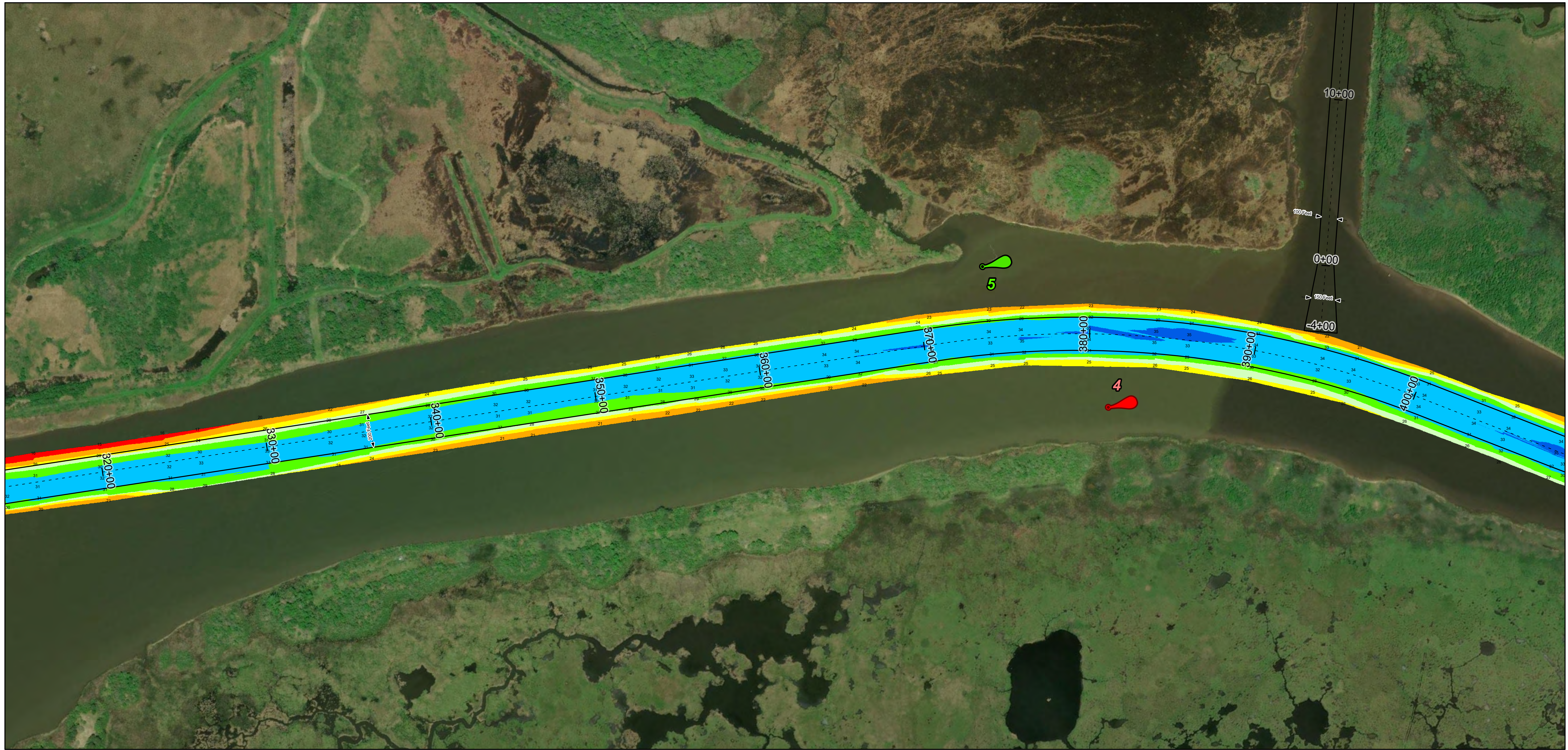
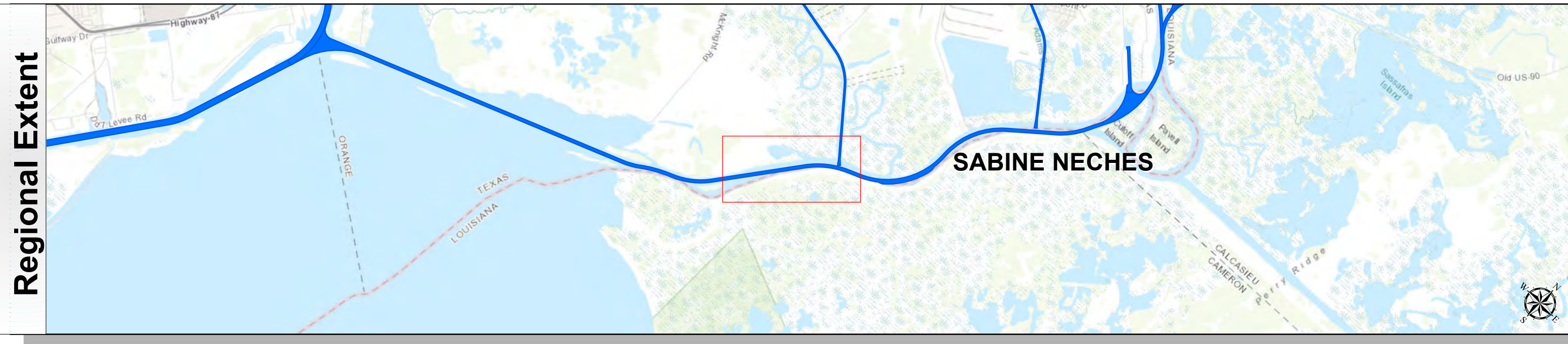
Additional Combined Survey Dates and Stationing: Combined survey dates 20240518_CS; 20250325_PR 230P00_430P00	
Coordinate System: NAD 1983 StatePlane Texas South Central FIPS 4204 Feet Projection: Lambert Conformal Conic	
Dredging Reach Extent 0 0.35 0.7 1.4 Miles	
Hydrographic Survey Extent 0 300 600 1,200 Feet	

HYDROGRAPHIC SURVEY
 U.S. ARMY ENGINEER DISTRICT
 CORPS OF ENGINEERS
 GALVESTON, TEXAS
Station: 230+0 to 586+43
SABINE NECHES
 Mouth to Orange Municipal Slip

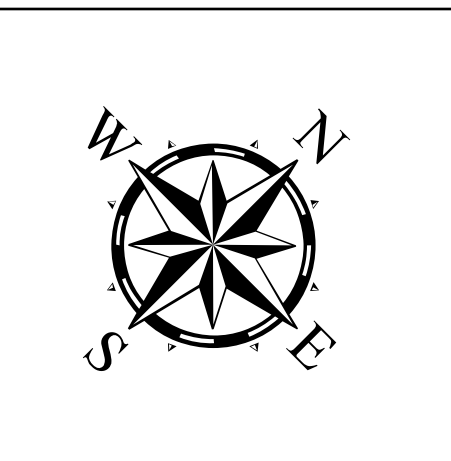
Sabine Neches Waterway: Mouth to Orange Municipal Slip



U.S. Army Corps of Engineers
Galveston District



Latest Survey Collection Date: 25 March 2025	Authorized Depth: -31ft.
Document Page: 2 of 4	Width Range: 200ft to 300ft
Scale: 1:3,500	Side Slope Ratio: (Rise : Run)
Mapped by: M3AOXPAC	PDF Print Date: 4/17/2025
Additional Imagery info:	



Channel Features

- Channel Center Line
- Channel Toe
- Channel Dimensions

Aids to Navigation

- Green Side Aids
- Red Side Aids
- Lights

MLLW

0 - 10
10 - 20
20 - 24
24 - 26
26 - 28
28 - 31
31 - 35
35 - 40
< -40

NOTES:

- Horizontal coordinates are referenced to Texas State Plane Coordinate System, South Central Zone NAD83 US Survey Feet.
- Elevations are referenced to Mean Lower Low Water (MLLW) datum.
- This project was designed by the Galveston District of the U.S. Army Corps of Engineers. The initials and signatures and registration designations of individuals appear on these project documents within the scope of their employment as required by 47CFR 117.11-1, §117.12.
- The information depicted on this survey map represents the results of surveys made on the dates indicated and can only be considered as indicating the general conditions existing at that time. These conditions are subject to rapid change due to shoaling events. A prudent mariner should not rely exclusively on the information provided here. Required by 33 CFR 209.325
- For the most up to date information please check our website at: <http://www.svg.usace.army.mil/Missions/Navigation/HydrographicSurveys/>

Service Layer Credits: World Imagery: Source: Esri, Maxar, Earthstar Geographics, and the GIS User Community
World Topographic Map: Texas Parks & Wildlife, Esri, HERE, Garmin, USGS, NGA, EPA, USDA, NPS
World Ocean Base: Esri, GEBCO, Garmin, NaturalVue

Additional Combined Survey Dates and Stationing:
Combined survey dates 20240518_CS; 20250325_PR 230P00_430P00

Dredging Reach Extent

0 0.35 0.7 1.4 Miles

Hydrographic Survey Extent

0 300 600 1,200 Feet

Coordinate System: NAD 1983 StatePlane Texas South Central FIPS 4204 Feet
Projection: Lambert Conformal Conic

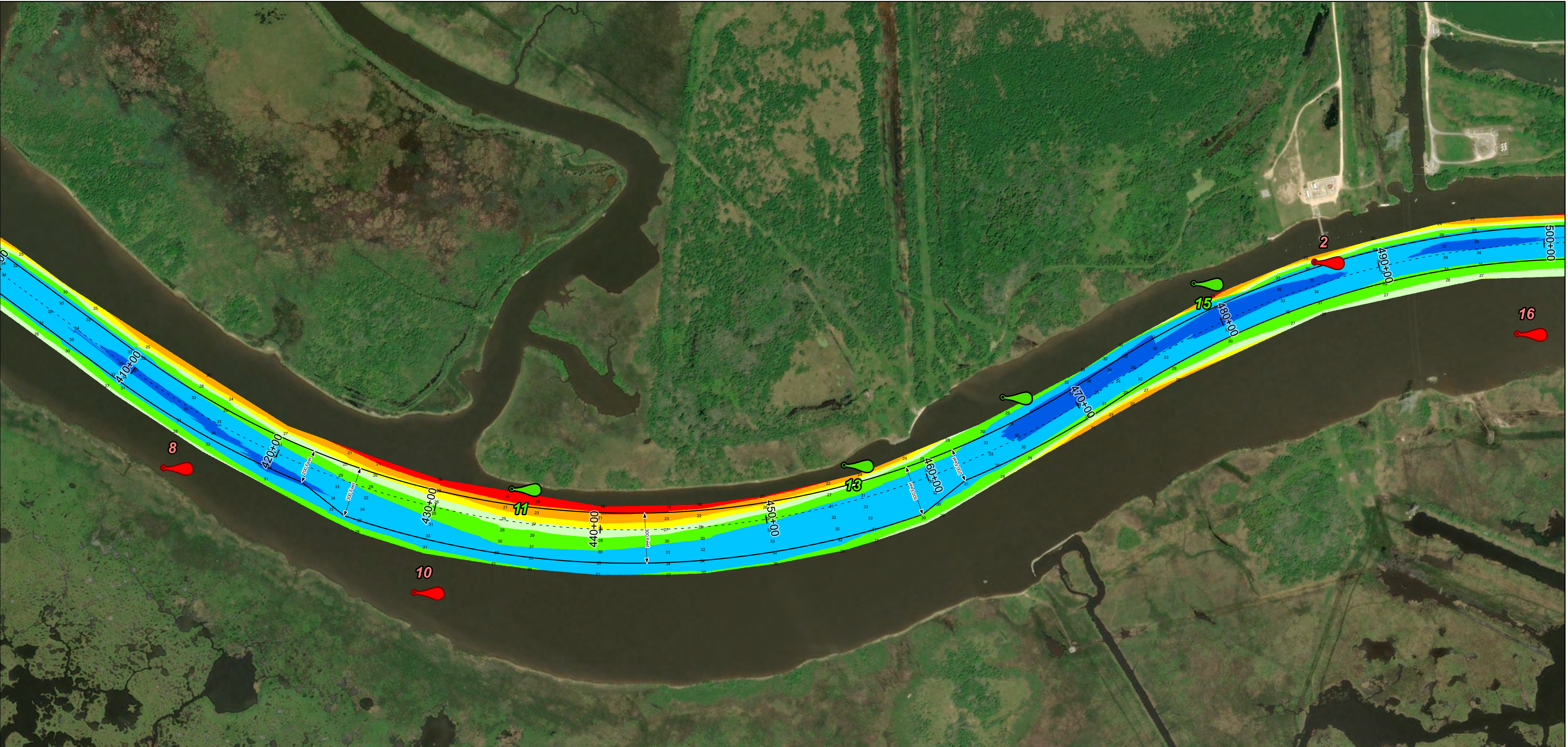
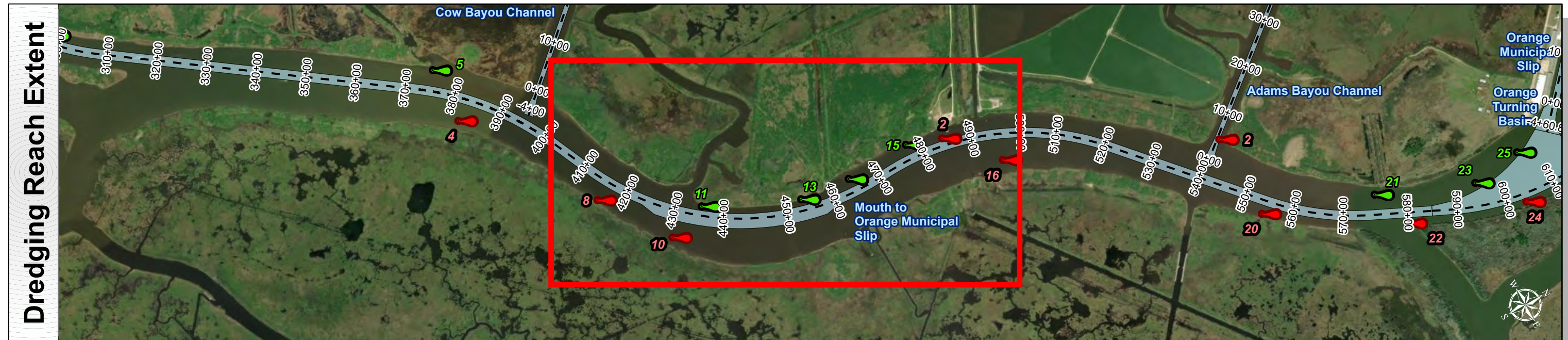
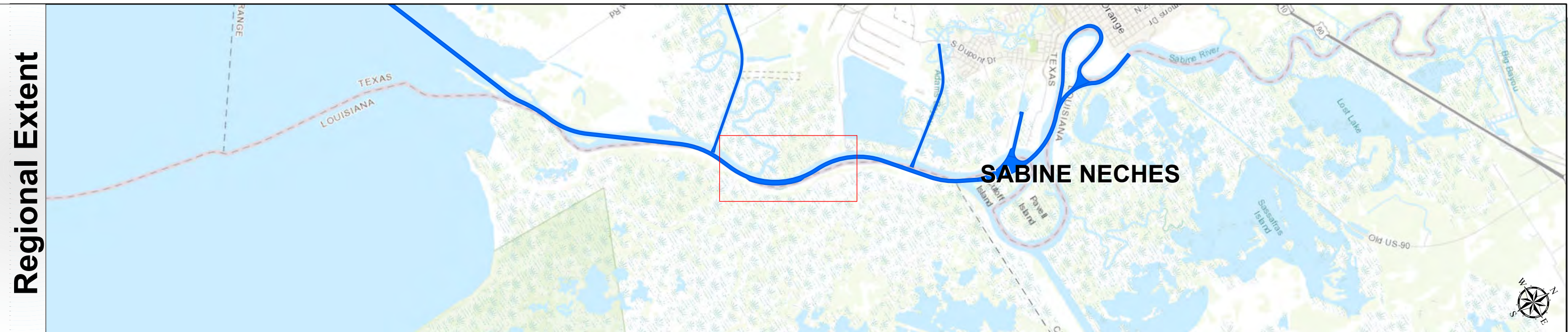
HYDROGRAPHIC SURVEY
U.S. ARMY ENGINEER DISTRICT
CORPS OF ENGINEERS
GALVESTON, TEXAS

Station: 230+0 to 586+43
SABINE NECHES
Mouth to Orange Municipal Slip

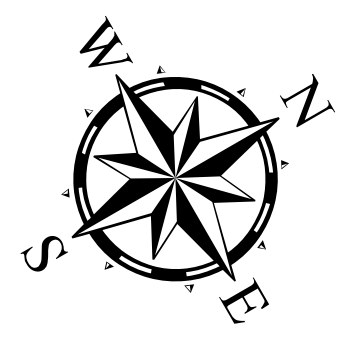
Sabine Neches Waterway: Mouth to Orange Municipal Slip



U.S. Army Corps of Engineers
Galveston District



Latest Survey Collection Date: 25 March 2025	Authorized Depth: -31ft.
Document Page: 3 of 4	Width Range: 200ft to 300ft
Scale: 1:3,500	Side Slope Ratio: (Rise : Run)
Mapped by: M3AOXPAC	PDF Print Date: 4/17/2025
Additional Imagery info:	



Channel Features

- Channel Center Line
- Channel Toe
- ↔ Channel Dimensions

Aids to Navigation

- Green Side Aids
- Red Side Aids
- Lights

Depth Legend (MLLW)

0 - 10
10 - 20
20 - 24
24 - 26
26 - 28
28 - 31
31 - 35
35 - 40
< -40

NOTES:

- Horizontal coordinates are referenced to Texas State Plane Coordinate System, South Central Zone NAD83 US Survey Feet.
- Elevations are referenced to Mean Lower Low Water (MLLW) datum.
- This project was designed by the Galveston District of the U.S. Army Corps of Engineers. The initials and signatures and registration designations of individuals appear on these project documents within the scope of their employment as required by 47CFR 117.1-1, §132.
- The information depicted on this survey map represents the results of surveys made on the dates indicated and can only be considered as indicating the general conditions existing at that time. These conditions are subject to rapid change due to shoaling events. A prudent mariner should not rely exclusively on the information provided here. Required by 33 CFR 209.325
- For the most up to date information please check our website at: <http://www.svg.usace.army.mil/Missions/Navigation/HydrographicSurveys/>

Service Layer Credits: World Imagery: Source: Esri, Maxar, Earthstar Geographics, and the GIS User Community
World Topographic Map: Texas Parks & Wildlife, Esri, HERE, Garmin, USGS, NGA, EPA, USDA, NPS
World Ocean Base: Esri, GEBCO, Garmin, NaturalVue

Additional Combined Survey Dates and Stationing:
Combined survey dates 20240518_CS; 20250325_PR 230P00_430P00

Dredging Reach Extent

Hydrographic Survey Extent

Coordinate System: NAD 1983 StatePlane Texas South Central FIPS 4204 Feet
Projection: Lambert Conformal Conic

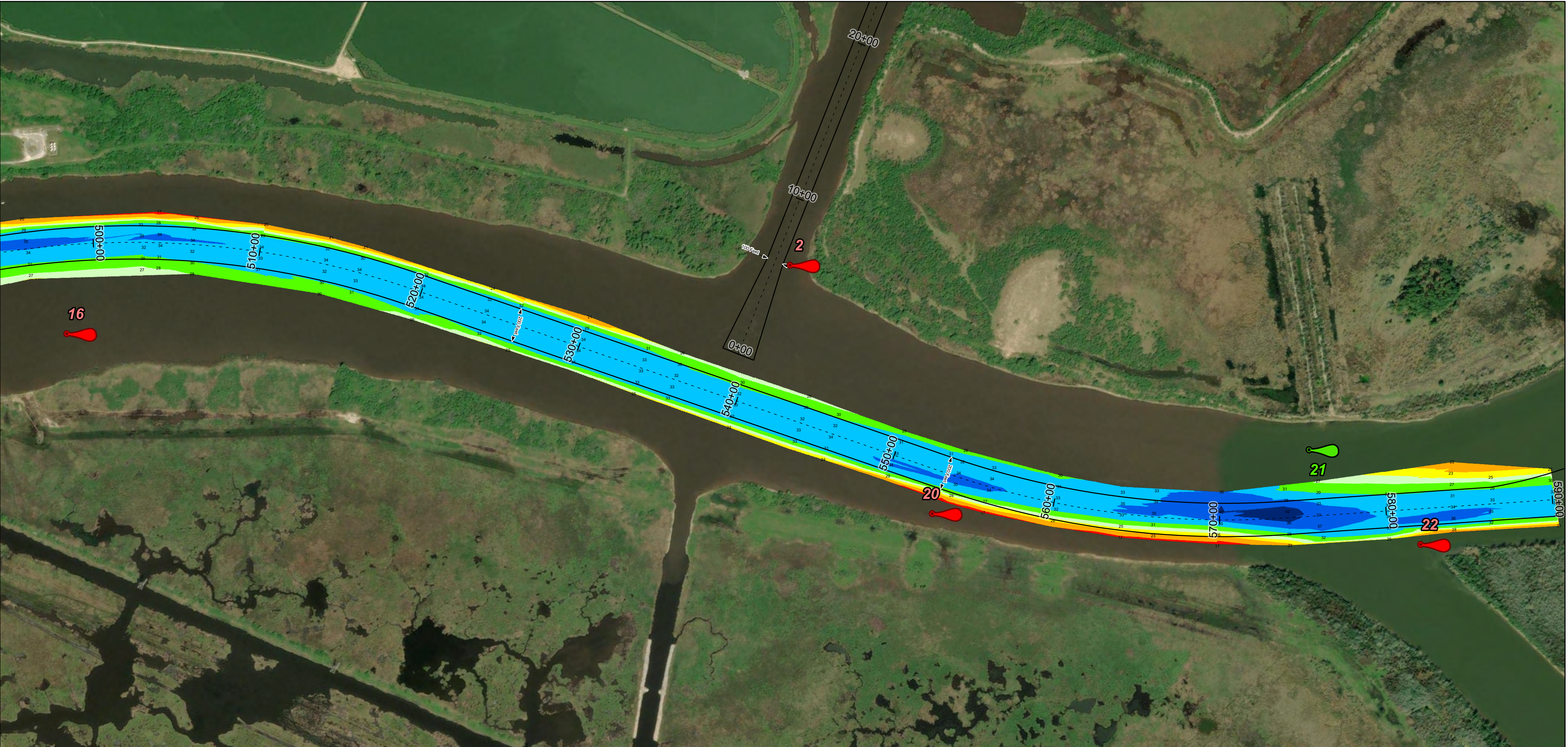
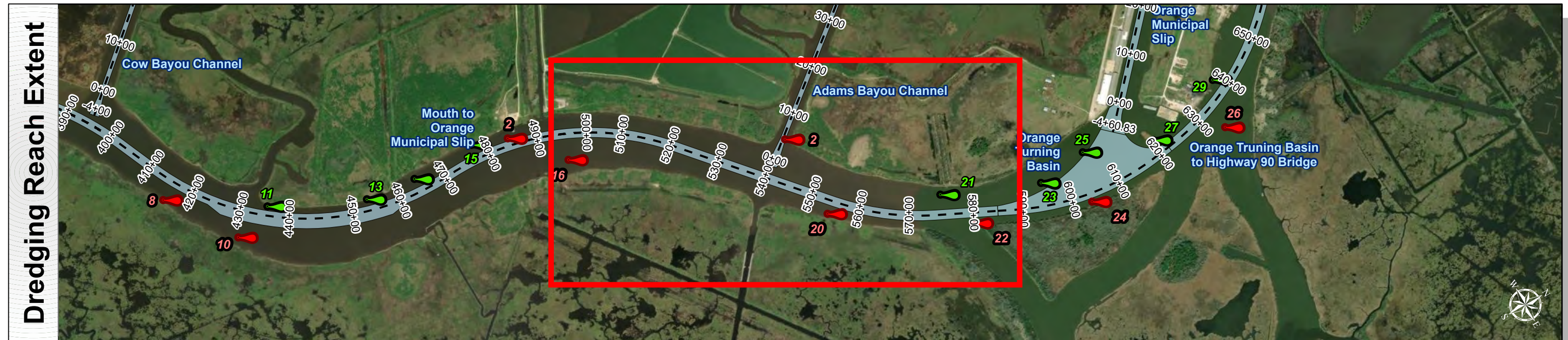
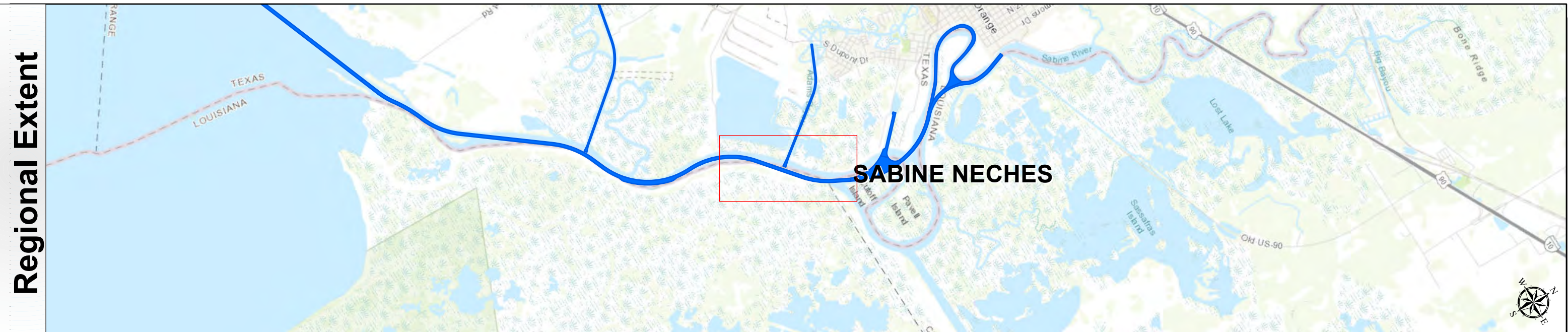
HYDROGRAPHIC SURVEY
U.S. ARMY ENGINEER DISTRICT
CORPS OF ENGINEERS
GALVESTON, TEXAS

Station: 230+0 to 586+43
SABINE NECHES
Mouth to Orange Municipal Slip

Sabine Neches Waterway: Mouth to Orange Municipal Slip



U.S. Army Corps of Engineers
Galveston District



Latest Survey Collection Date: 25 March 2025	Authorized Depth: -31ft.
Document Page: 4 of 4	Width Range: 200ft to 300ft
Scale: 1:3,500	Side Slope Ratio: (Rise : Run)
Mapped by: M3AOXPAC	PDF Print Date: 4/17/2025
Additional Imagery info:	



Channel Features

- Channel Center Line
- Channel Toe
- Channel Dimensions

Aids to Navigation

- Green Side Aids
- Red Side Aids
- Lights

MLLW

0 - 10	10 - 20	20 - 24	24 - 26	26 - 28	28 - 31	31 - 35	35 - 40	< -40
--------	---------	---------	---------	---------	---------	---------	---------	-------

NOTES:

- Horizontal coordinates are referenced to Texas State Plane Coordinate System, South Central Zone NAD83 US Survey Feet.
- Elevations are referenced to Mean Lower Low Water (MLLW) datum.
- This project was designed by the Galveston District of the U.S. Army Corps of Engineers. The initials and signatures and registration designations of individuals appear on these project documents within the scope of their employment as required by 47 CFR 111.113-1, §112.
- The information depicted on this survey map represents the results of surveys made on the dates indicated and can only be considered as indicating the general conditions existing at that time. These conditions are subject to rapid change due to shoaling events. A prudent mariner should not rely exclusively on the information provided here. Required by 33 CFR 209.325
- For the most up to date information please check our website at: <http://www.svg.usace.army.mil/Missions/Navigation/HydrographicSurveys/>

Service Layer Credits: World Imagery: Source: Esri, Maxar, Earthstar Geographics, and the GIS User Community
World Topographic Map: Texas Parks & Wildlife, Esri, HERE, Garmin, USGS, EPA, USGS, NPS
World Ocean Base: Esri, GEBCO, Garmin, NaturalVue

Additional Combined Survey Dates and Stationing:
Combined survey dates 20240518_CS; 20250325_PR 230P00_430P00

Dredging Reach Extent

Hydrographic Survey Extent

Coordinate System: NAD 1983 StatePlane Texas South Central FIPS 4204 Feet
Projection: Lambert Conformal Conic

HYDROGRAPHIC SURVEY
U.S. ARMY ENGINEER DISTRICT
CORPS OF ENGINEERS
GALVESTON, TEXAS

Station: 230+0 to 586+43
SABINE NECHES
Mouth to Orange Municipal Slip