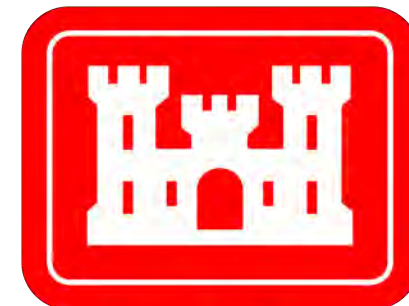
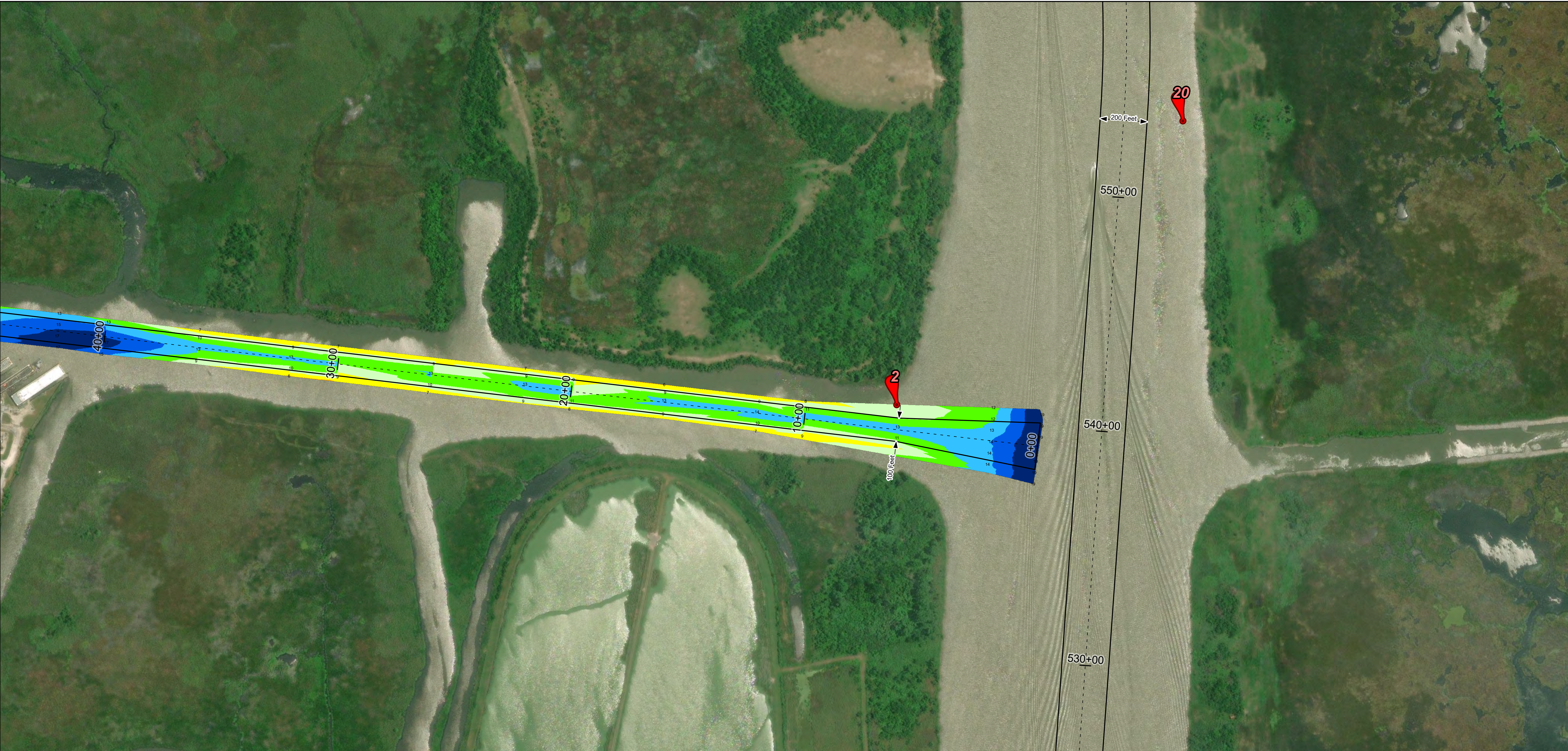
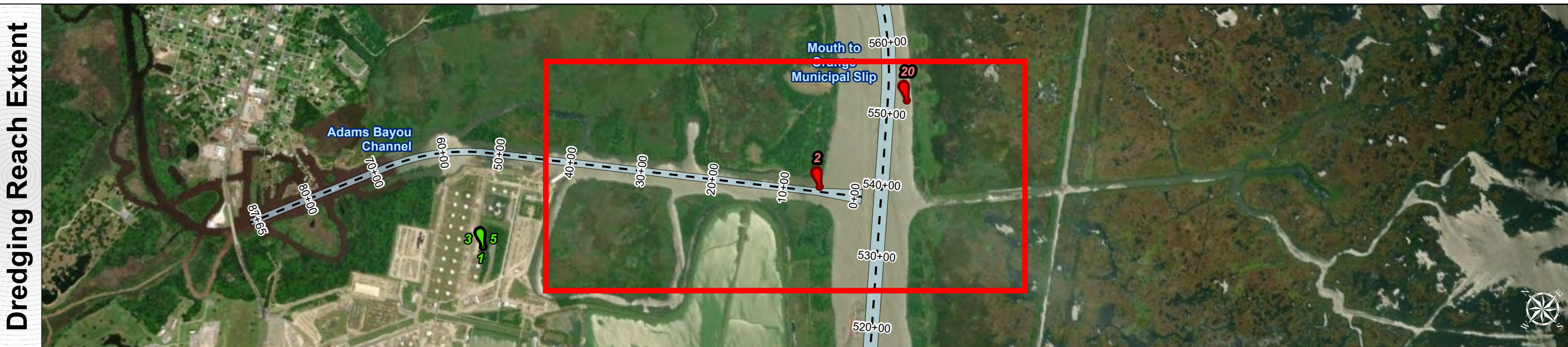
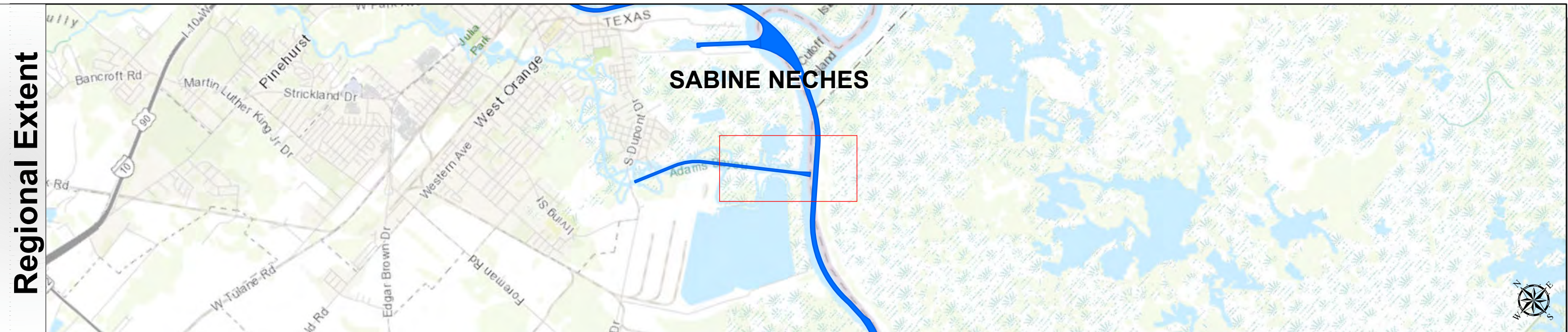


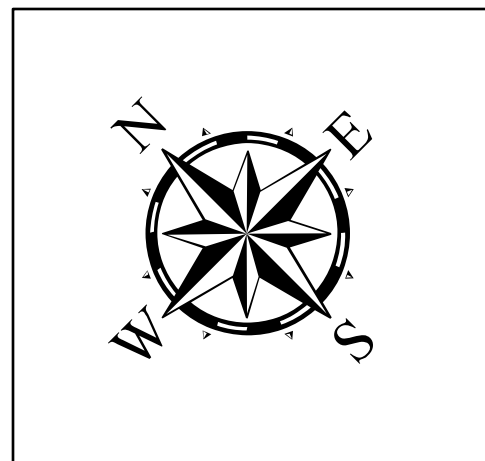
Sabine Neches Waterway: Adams Bayou Channel



U.S. Army Corps of Engineers
Galveston District



Latest Survey Collection Date: 21 May 2024	Authorized Depth: -13ft.
Document Page: 1 of 3	Side Slope Ratio: (Rise : Run)
Scale: 1:2,500	PDF Print Date: 9/17/2024
Mapped by: m3odnmhg	
Additional Imagery info:	



Channel Features

- Channel Center Line
- Channel Toe
- Channel Dimensions

Aids to Navigation

- Green Side Aids
- Red Side Aids
- Lights

MLLW

0 - 3	3 - 5	5 - 7	7 - 9	9 - 11	11 - 13	13 - 15	15 - 17	< 17
-------	-------	-------	-------	--------	---------	---------	---------	------

NOTES:

- Horizontal coordinates are referenced to Texas State Plane Coordinate System, South Central Zone NAD83 US Survey Feet.
- Elevations are referenced to Mean Lower Low Water (MLLW) datum.
- This project was designed by the Galveston District of the U.S. Army Corps of Engineers. The initials and signatures and registration designations of individuals appear on these project documents within the scope of their employment as required by er1110-1-g132.
- The information depicted on this survey map represents the results of surveys made on the dates indicated and can only be considered as indicating the general conditions existing at that time. These conditions are subject to rapid change due to shoaling events. A prudent mariner should not rely exclusively on the information provided here. Required by 33 CFR 209.325
- For the most up to date information please check our website at: <http://www.svg.usace.army.mil/Missions/Navigation/HydrographicSurveys/>

Service Layer Credits: World Topographic Map; Texas Parks & Wildlife; Esri, HERE, Garmin, INCREMENT P, USGS, METINASA, NGA, EPA, USDA, World Imagery, Maxar

Additional Combined Survey Dates and Stationing:
COMB_SURV_INFO_HERE

Coordinate System: NAD 1983 StatePlane Texas South Central FIPS 4204 Feet
Projection: Lambert Conformal Conic

Dredging Reach Extent

0 0.25 0.5 1 Miles

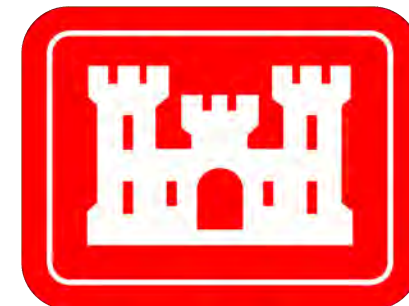
Hydrographic Survey Extent

0 215 430 860 Feet

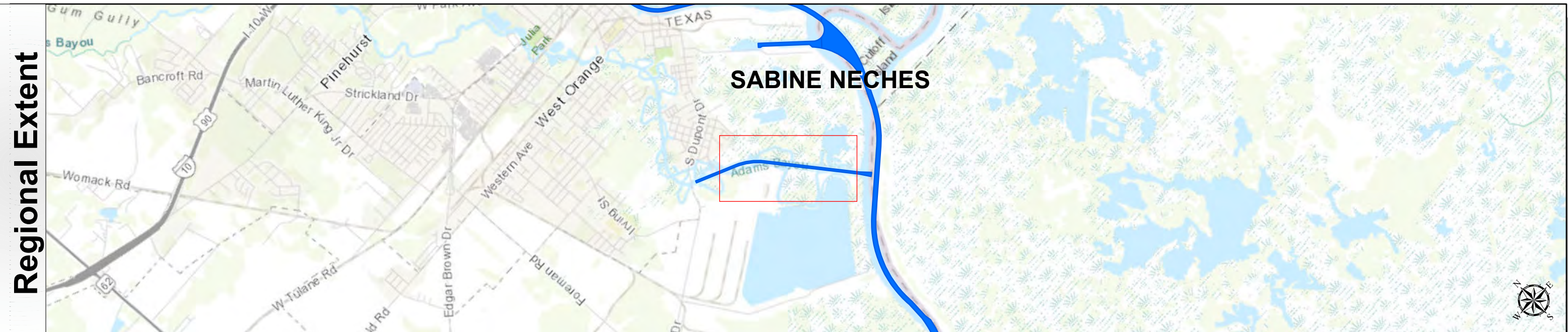
HYDROGRAPHIC SURVEY
U.S. ARMY ENGINEER DISTRICT
CORPS OF ENGINEERS
GALVESTON, TEXAS

Station: 0+00 to 82+00
SABINE NECHES
Adams Bayou Channel

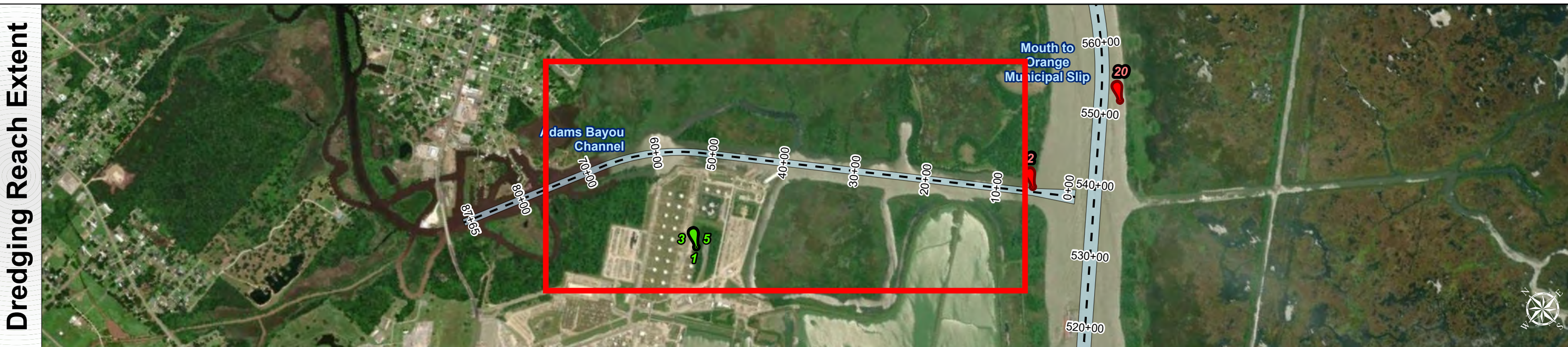
Sabine Neches Waterway: Adams Bayou Channel



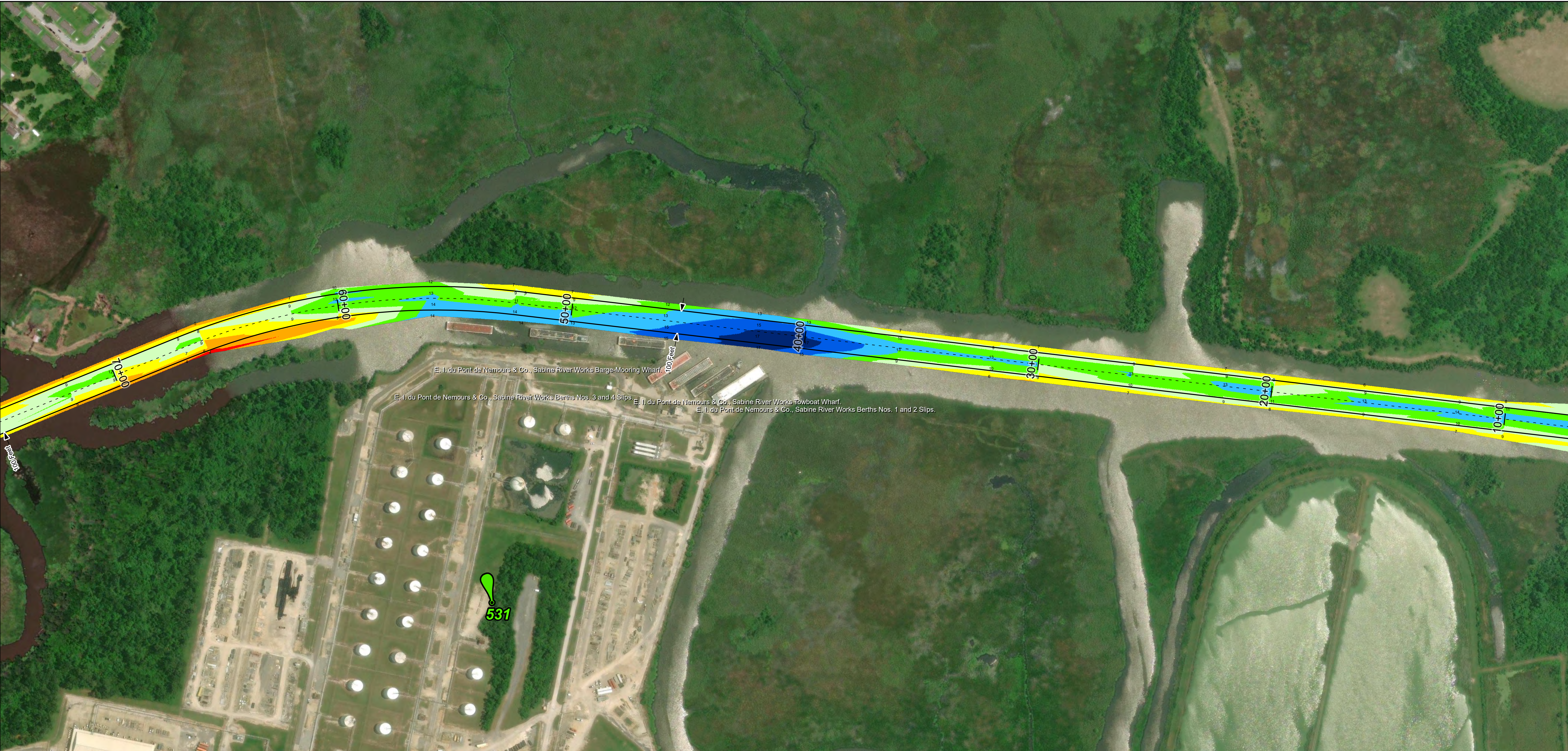
U.S. Army Corps of Engineers
Galveston District



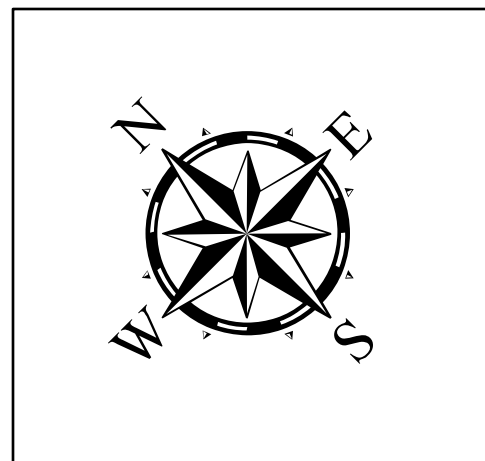
Regional Extent



Dredging Reach Extent



Latest Survey Collection Date: 21 May 2024	Authorized Depth: -13ft.
Document Page: 2 of 3	Side Slope Ratio: (Rise : Run)
Scale: 1:2,500	PDF Print Date: 9/17/2024
Mapped by: m3odrmhg	
Additional Imagery info:	



Channel Features

- Channel Center Line
- Channel Toe
- Channel Dimensions

Aids to Navigation

- Green Side Aids
- Red Side Aids
- Lights

MLLW

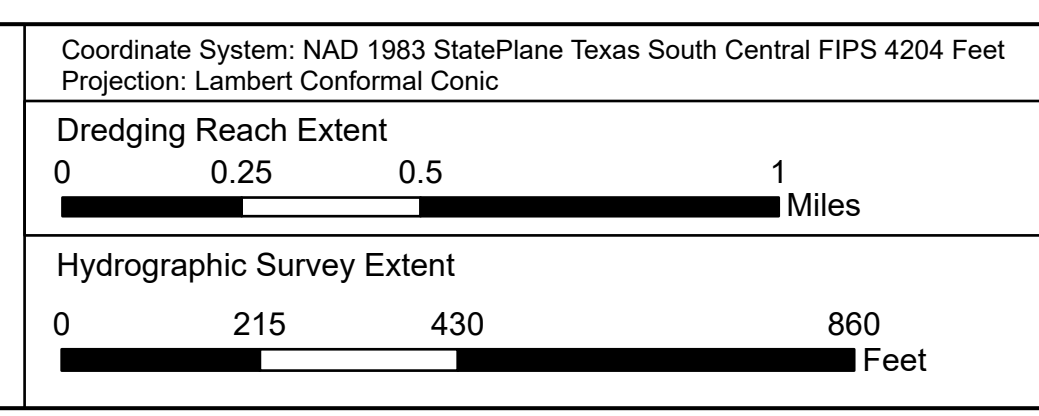
0 - 3	3 - 5	5 - 7	7 - 9	9 - 11	11 - 13	13 - 15	15 - 17	< 17
-------	-------	-------	-------	--------	---------	---------	---------	------

NOTES:

- Horizontal coordinates are referenced to Texas State Plane Coordinate System, South Central Zone NAD83 US Survey Feet.
- Elevations are referenced to Mean Lower Low Water (MLLW) datum.
- This project was designed by the Galveston District of the U.S. Army Corps of Engineers. The initials and signatures and registration designations of individuals appear on these project documents within the scope of their employment as required by 47 CFR 111.1-1.4-132.
- The information depicted on this survey map represents the results of surveys made on the dates indicated and can only be considered as indicating the general conditions existing at that time. These conditions are subject to rapid change due to shoaling events. A prudent mariner should not rely exclusively on the information provided here. Required by 33 CFR 209.225.
- For the most up to date information please check our website at: <http://www.svg.usace.army.mil/Missions/Navigation/HydrographicSurveys/>

Service Layer Credits: World Topographic Map; Texas Parks & Wildlife; Esri, HERE, Garmin, INCREMENT P, USGS, METI/NASA, NGA, EPA, USDA World Imagery; Maxar

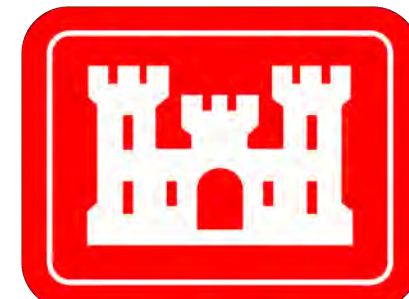
Additional Combined Survey Dates and Stationing:
COMB_SURV_INFO_HERE



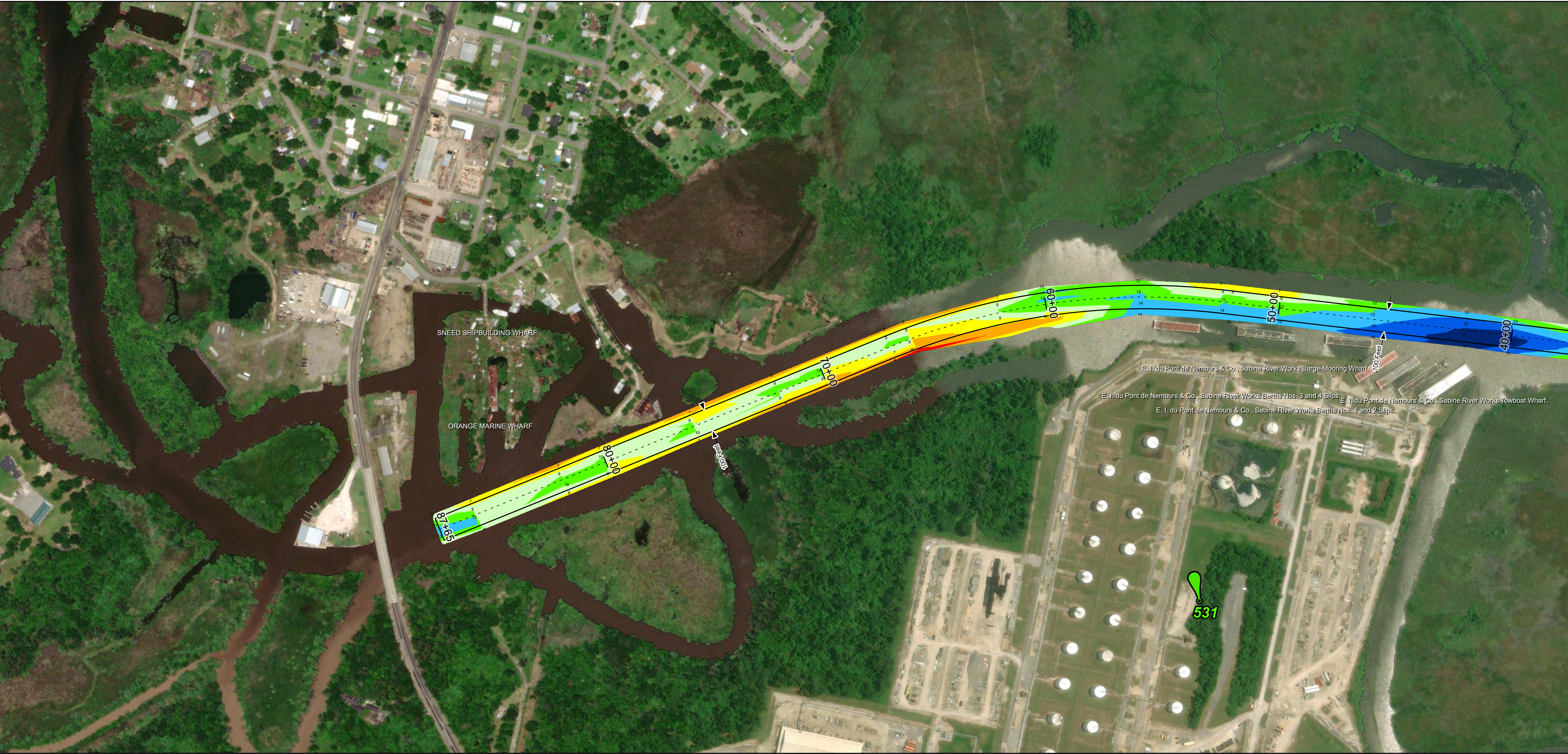
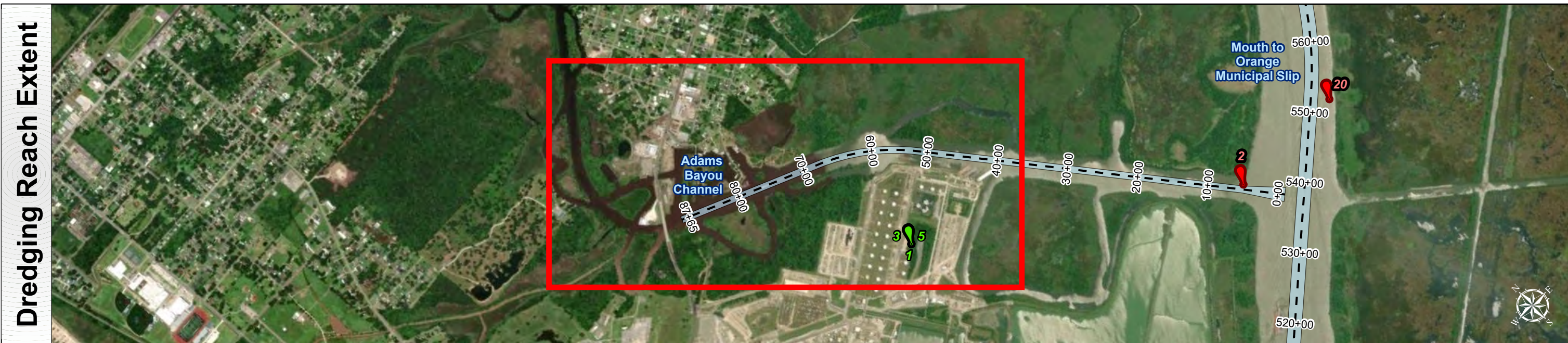
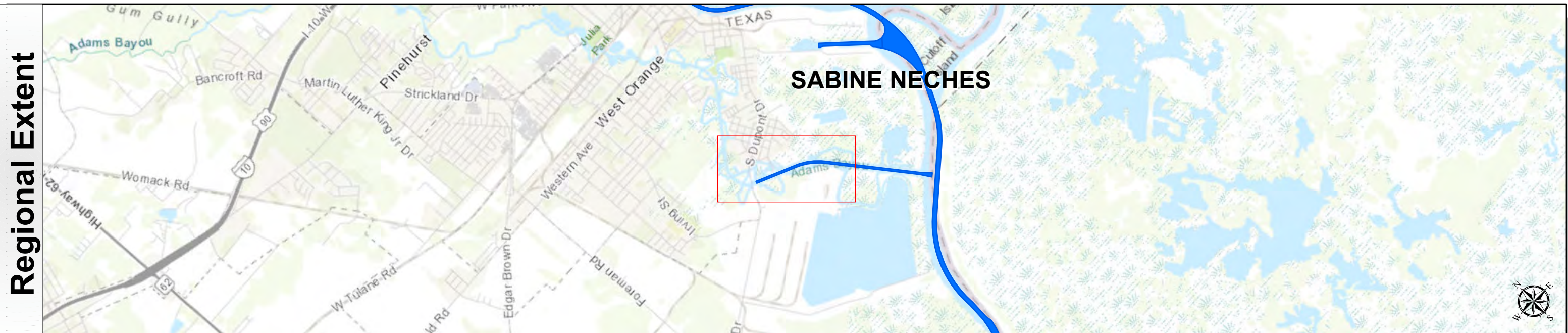
HYDROGRAPHIC SURVEY
U.S. ARMY ENGINEER DISTRICT
CORPS OF ENGINEERS
GALVESTON, TEXAS

Station: 0+00 to 82+00
SABINE NECHES
Adams Bayou Channel

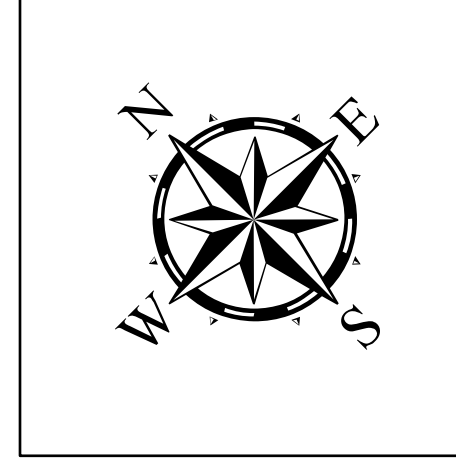
Sabine Neches Waterway: Adams Bayou Channel



U.S. Army Corps of Engineers
Galveston District



Latest Survey Collection Date: 21 May 2024	Authorized Depth: -13ft.
Document Page: 3 of 3	Side Slope Ratio: (Rise : Run)
Scale: 1:2,500	PDF Print Date: 9/17/2024
Mapped by: m3odnmhng	
Additional Imagery info:	



Channel Features

- Channel Center Line
- Channel Toe
- Channel Dimensions

Aids to Navigation

- Green Side Aids
- Red Side Aids
- Lights

MLLW

0 - 3	3 - 5	5 - 7	7 - 9	9 - 11	11 - 13	13 - 15	15 - 17	< 17
-------	-------	-------	-------	--------	---------	---------	---------	------

NOTES:

- Horizontal coordinates are referenced to Texas State Plane Coordinate System, South Central Zone NAD83 US Survey Feet.
- Elevations are referenced to Mean Lower Low Water (MLLW) datum.
- This project was designed by the Galveston District of the U.S. Army Corps of Engineers. The initials and signatures and registration designations of individuals appear on these project documents within the scope of their employment as required by 47 CFR 111.11-111.12.
- The information depicted on this survey map represents the results of surveys made on the dates indicated and can only be considered as indicating the general conditions existing at that time. These conditions are subject to rapid change due to shoaling events. A prudent mariner should not rely exclusively on the information provided here. Required by 33 CFR 209.225
- For the most up to date information please check our website at: <http://www.svg.usace.army.mil/Missions/Navigation/HydrographicSurveys/>

Service Layer Credits: World Topographic Map; Texas Parks & Wildlife; Esri, HERE, Garmin, INCREMENT P, USGS, METINASA, NGA, EPA, USDA, World Imagery, Maxar

Additional Combined Survey Dates and Stationing:
COMB_SURV_INFO_HERE

Dredging Reach Extent

0 0.25 0.5 1 Miles

Hydrographic Survey Extent

0 215 430 860 Feet

Coordinate System: NAD 1983 StatePlane Texas South Central FIPS 4204 Feet
Projection: Lambert Conformal Conic

HYDROGRAPHIC SURVEY
U.S. ARMY ENGINEER DISTRICT
CORPS OF ENGINEERS
GALVESTON, TEXAS

Station: 0+00 to 82+00
SABINE NECHES
Adams Bayou Channel