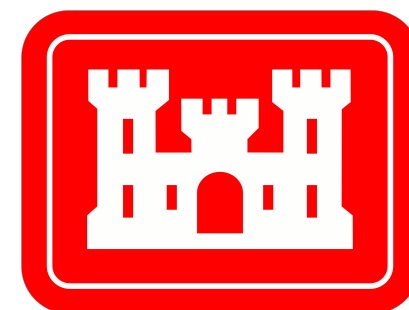
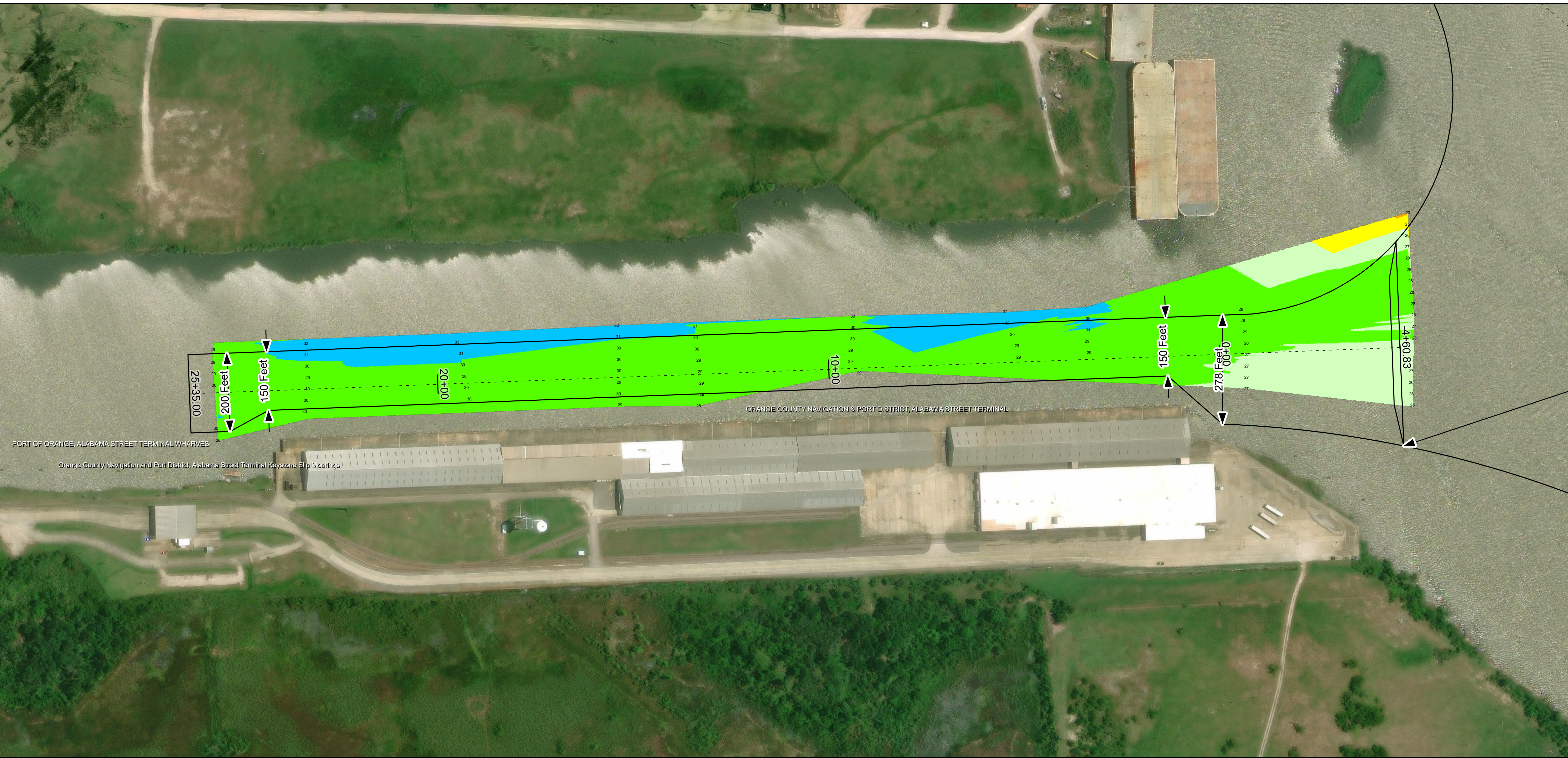
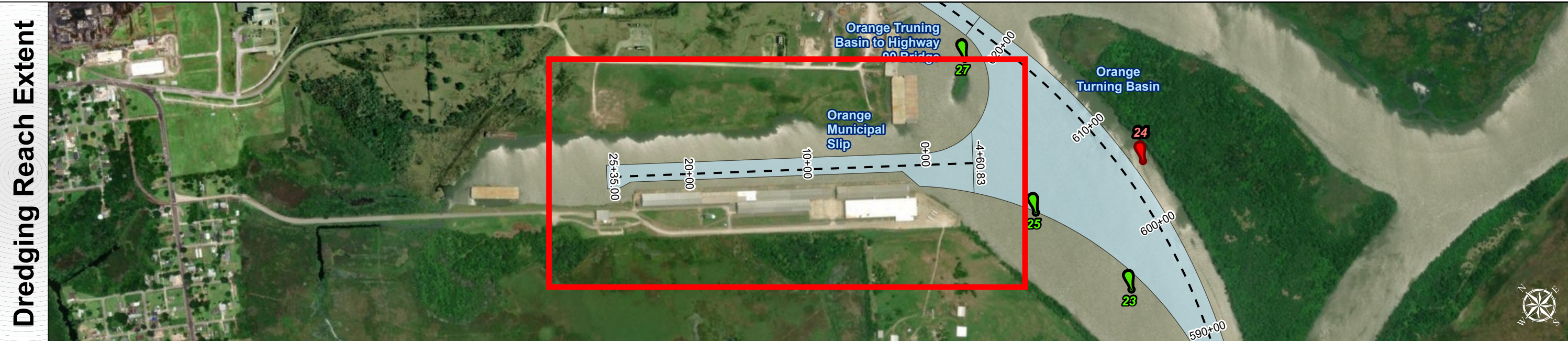
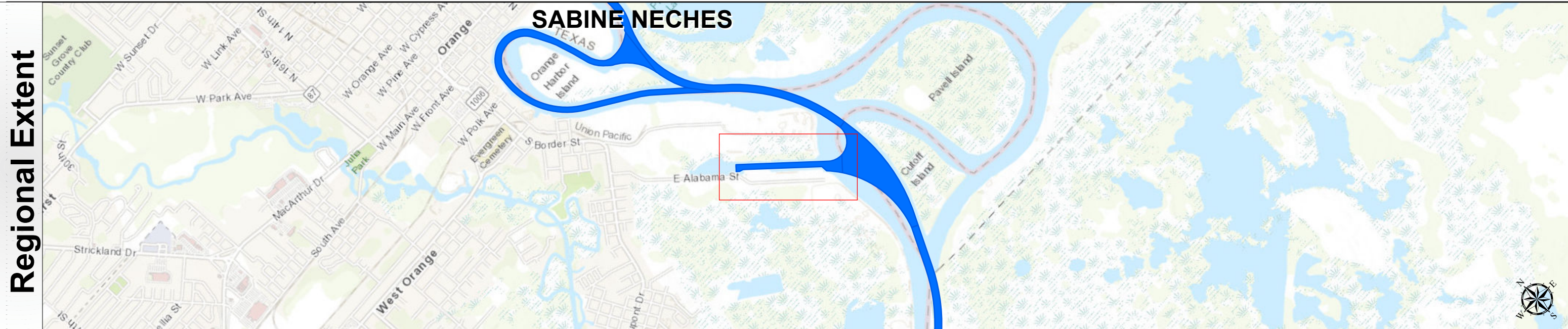


Sabine Neches Waterway: Orange Municipal Slip



U.S. Army Corps of Engineers
Galveston District



Latest Survey Collection Date: 21 May 2024	Authorized Depth: -3ft.
Document Page: 1 of 1	Side Slope Ratio: (Rise : Run)
Scale: 1:1,500	PDF Print Date: 9/16/2024
Mapped by: m3odnbdg	
Additional Imagery info:	



Channel Features	Aids to Navigation
<ul style="list-style-type: none"> Channel Center Line Channel Toe Channel Dimensions 	<ul style="list-style-type: none"> Green Side Aids Red Side Aids Lights

Depth Contours (MLLW)
<ul style="list-style-type: none"> 0 - 10 10 - 20 20 - 24 24 - 26 26 - 28 28 - 31 31 - 35 35 - 40 < -40

NOTES:
 1. Horizontal coordinates are referenced to Texas State Plane Coordinate System, South Central Zone NAD83 US Survey Feet.
 2. Elevations are referenced to Mean Lower Low Water (MLLW) datum.
 3. This project was designed by the Galveston District of the U.S. Army Corps of Engineers. The initials and signatures and registration designations of individuals appear on these project documents within the scope of their employment as required by er1110-1,8132.
 4. The information depicted on this survey map represents the results of surveys made on the dates indicated and can only be considered as indicating the general conditions existing at that time. These conditions are subject to rapid change due to shoaling events. A prudent mariner should not rely exclusively on the information provided here. Required by 33 CFR 209.225.
 5. For the most up to date information please check our website at: <http://www.svg.usace.army.mil/Missions/Navigation/HydrographicSurveys/>
 Service Layer Credits: World Topographic Map: Texas Parks & Wildlife, Esri, HERE, Garmin, INCREMENT P, USGS, METINASA, EPA, USDA
 World Imagery: Maxar, Microsoft
 World Imagery: Maxar
 World Ocean Base: Esri, GEBCO, Garmin, NaturalVue

Additional Combined Survey Dates and Stationing: COMB_SURV_INFO_HERE

Coordinate System: NAD 1983 StatePlane Texas South Central FIPS 4204 Feet Projection: Lambert Conformal Conic
Dredging Reach Extent 0 0.15 0.3 0.6 Miles
Hydrographic Survey Extent 0 125 250 500 Feet

HYDROGRAPHIC SURVEY
 U.S. ARMY ENGINEER DISTRICT
 CORPS OF ENGINEERS
 GALVESTON, TEXAS

Station: -4+60.83 to 26+34.99
 SABINE NECHES
 Orange Municipal Slip