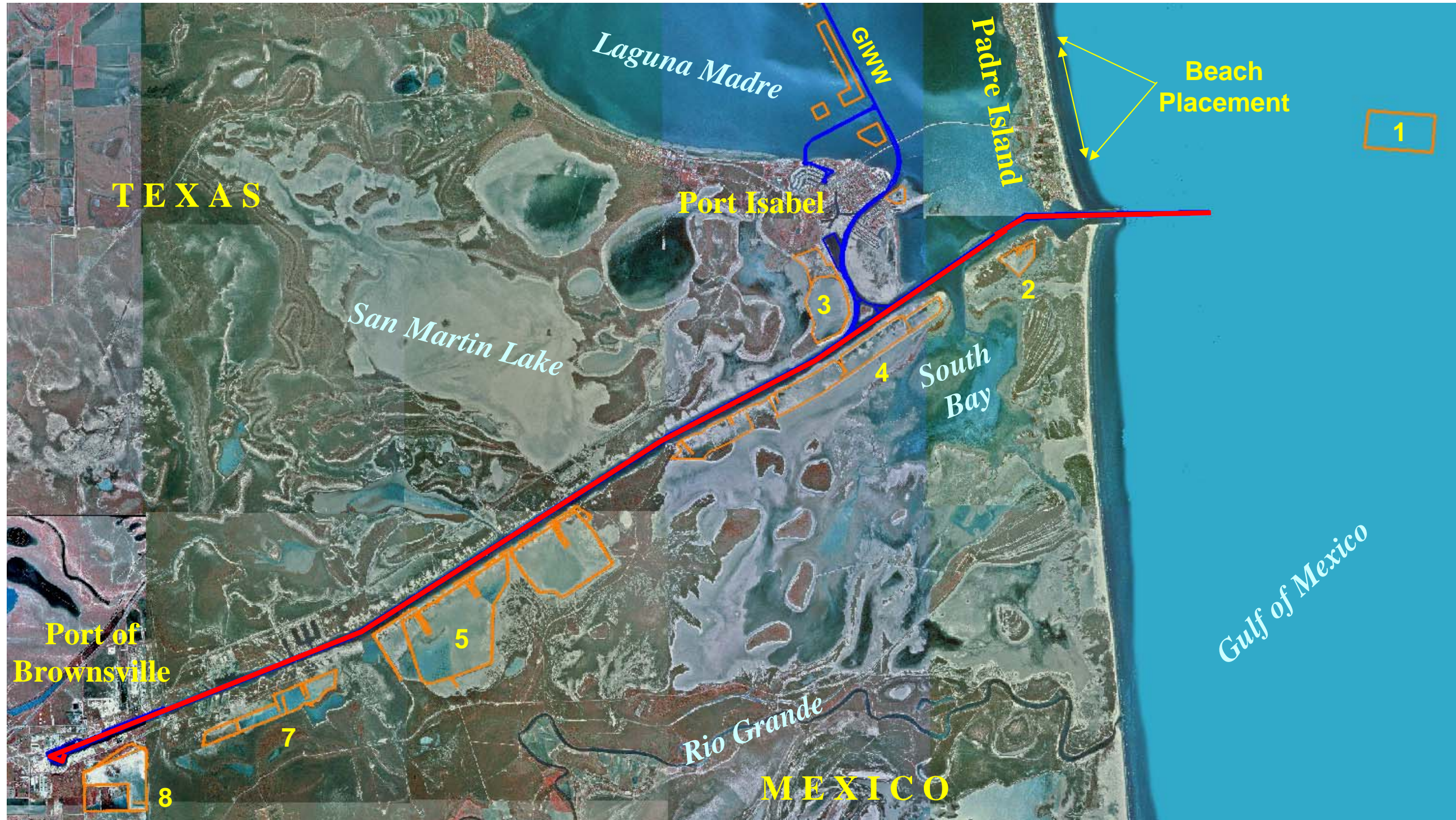




US Army Corps  
of Engineers®  
Galveston District

# Brazos Island Harbor (BIH) Brownsville Ship Channel





X = 2,360,956.25  
Y = 104,823.91

X = 2,361,123.16  
Y = 104,404.22

X = 2,361,574.25  
Y = 104,219.71

X = 2,362,085.00  
Y = 104,423.76

X = 2,362,284.17  
Y = 105,084.75

PLACEMENT AREA NO. 8



THIS AREA NOT AVAIL  
IN THIS CONTRACT



78+000

77+000

76+000

75+000

74+000

73+000

72+000

71+000

70+000

69+000

68+000

67+000

66+000

65+000

64+99

64+99

100'

100'

100'

1650'

100'

100'

THIS AREA NOT AVAILABLE  
IN THIS CONTRACT

DISCHARGE POINT

PLACEMENT AREA NO. 7

EXISTING EFFLUENT DITCH

CAUTION  
STONE MAY BE ENCOUNTERED  
ON THE NORTH BANK

P.L. STA. 83+907.13

P.O. STA. 62+841.26

PLAN

0 500 1,000 1,500  
SCALE IN FEET

P.I. STA. 63+907.13

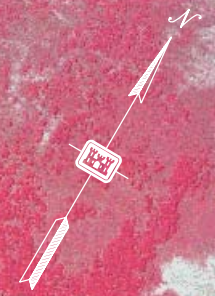
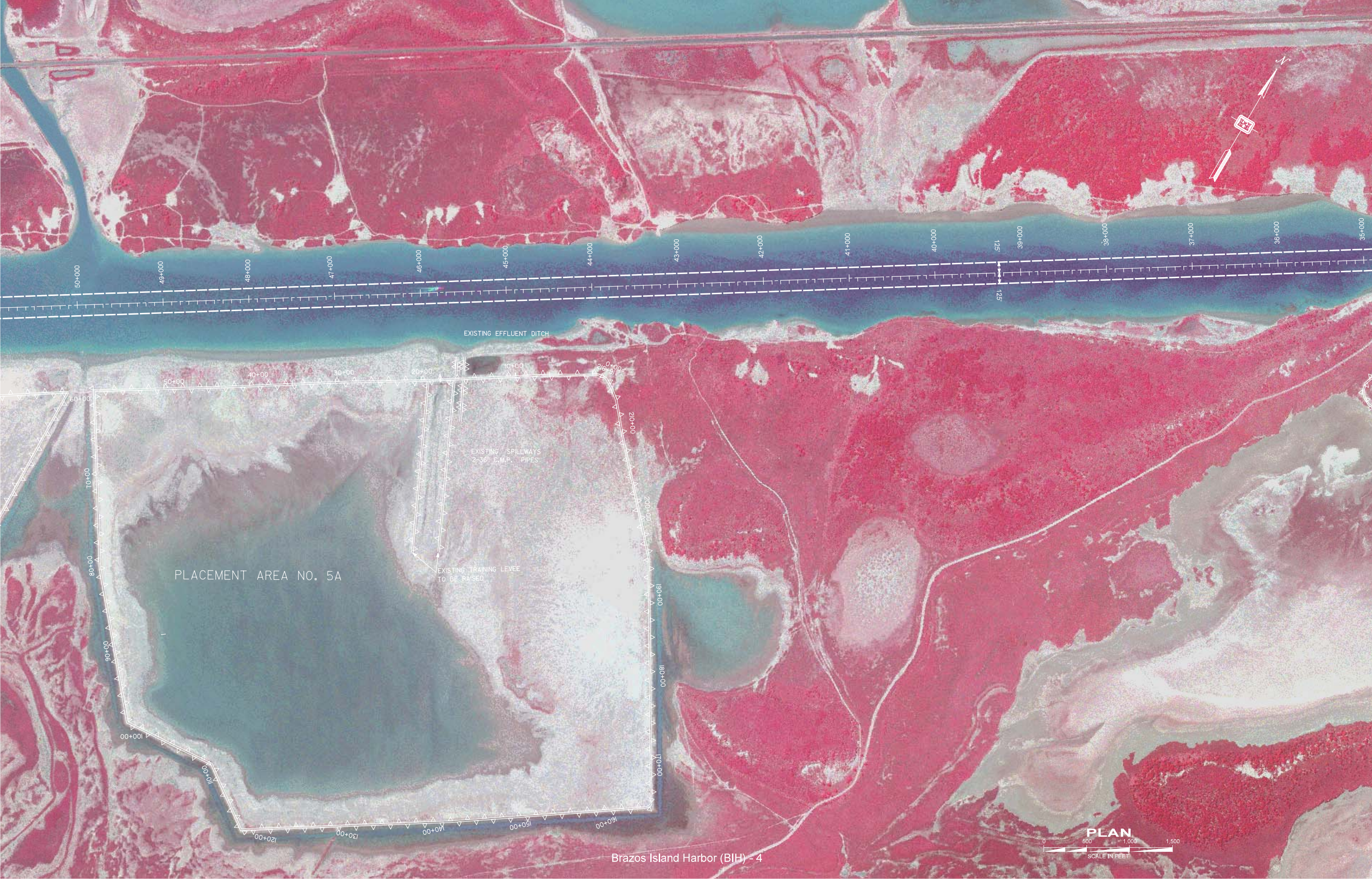
P.C. STA. 63+847.26

P.I. STA. 63+527.71  
X = 2,385,084.71  
Y = 114,452.23  
D = 1° 0' 0"  
R = 5729.66'  
T = 531.46'  
L = 105° 18' 88"

PLACEMENT AREA NO. 5B

EXISTING SPILLWAYS  
2-36" C.M.P. PIPES





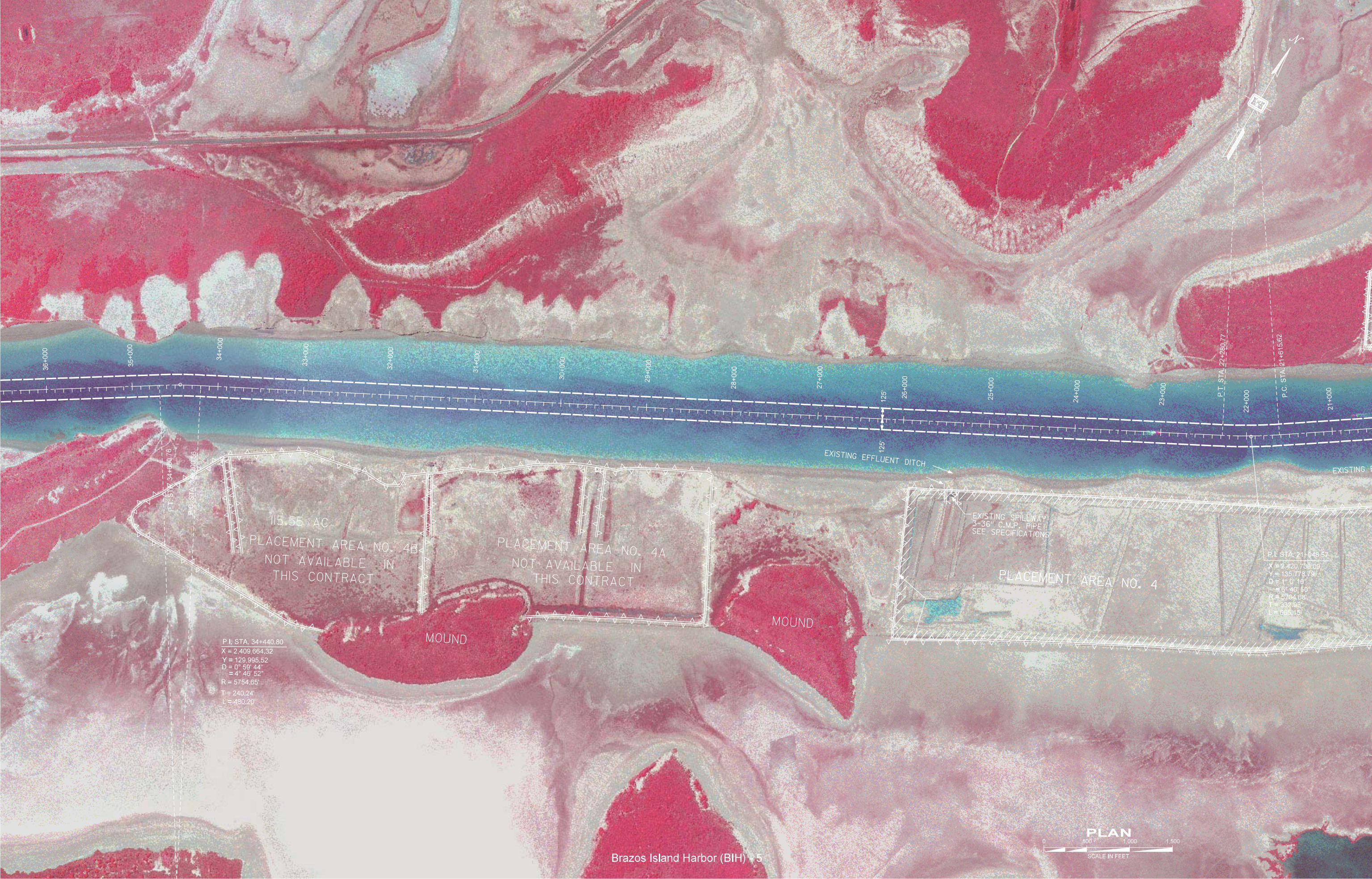
PLACEMENT AREA NO. 5A

EXISTING EFFLUENT DITCH

EXISTING SPILLWAYS  
2-36" C.M.P. PIPES

EXISTING TRAINING LEVEE  
TO BE RAISED





36+000 35+000 34+000 33+000 32+000 31+000 30+000 29+000 28+000 27+000 26+000 25+000 24+000 23+000 22+000 21+000

P.I. STA. 34+680.76  
P.C. STA. 200.66

115.55 AC  
PLACEMENT AREA NO. 4B  
NOT AVAILABLE IN  
THIS CONTRACT

PLACEMENT AREA NO. 4A  
NOT AVAILABLE IN  
THIS CONTRACT

EXISTING EFFLUENT DITCH  
EXISTING SPILLWAY  
3-36" C.M.P. PIPE  
SEE SPECIFICATIONS  
PLACEMENT AREA NO. 4

P.I. STA. 21+048.57  
X = 2,420,758.09  
Y = 135,778.79  
D = 1° 0' 16"  
= 6' 40' 50"  
R = 5704.68'  
T = 332.98'  
L = 665.15'

P.I. STA. 34+440.80  
X = 2,409,664.32  
Y = 129,995.52  
D = 0° 59' 44"  
= 4° 46' 52"  
R = 5754.65'  
T = 240.24'  
L = 480.20'

MOUND

MOUND





PLACEMENT AREA NO. 3

PLACEMENT AREA NO. 4

WEST WYE

EAST WYE

EXISTING EFFLUENT DITCH

EXISTING SPILLWAY  
SEE SPECIFICATIONS

EXISTING LEVEE

EXISTING SPILLWAY  
1-36" C.M.P. PIPE  
SEE SPECIFICATIONS

200' OF LEVEE  
TO BE REPAIRED

P.I. STA. 21+948.57  
 X = 2,420.768.09  
 Y = 135,778.79  
 D = 1' 0" 18"  
 L = 6' 40" 50"  
 R = 5704.68  
 T = 332.96  
 L = 666.15'

G.I.W.W.P.C. STA. 5+858.00 FWD = 5+306.27 BK

P.I. STA. 10+386.00  
 X = 20,257.25'  
 Y = 108,533  
 R = 785.33  
 L = 3428.14'

D = 0' 08' 00"  
 L = 97' 15' 30"  
 R = 2085.39  
 T = 3030.0  
 L = 4558.10'

P.I. STA. 10+919.28  
 X = 10,000.98'  
 Y = 122,120  
 L = 2342.00'

PLAN





8+000

7+000

6+000

5+000

4+000

3+000

2+000

1+000

0+000

-1+000

-2+000

-3+000

-4+000

-5+000

-6+000

-7+000

-8+000

PLACEMENT AREA NO. 2

EXISTING DROP OUTLET

EXISTING LEVEE

EXISTING TRAINING LEVEE

ACCESS ROUTE TO D.A. NO. 2

P.I. STA. 1+516.60  
X = 2,437,625.66  
Y = 147,279.89

STA. 1+515.30

STA. 1+423.85

STA. 2+328.82

TRANSITION

PLAN

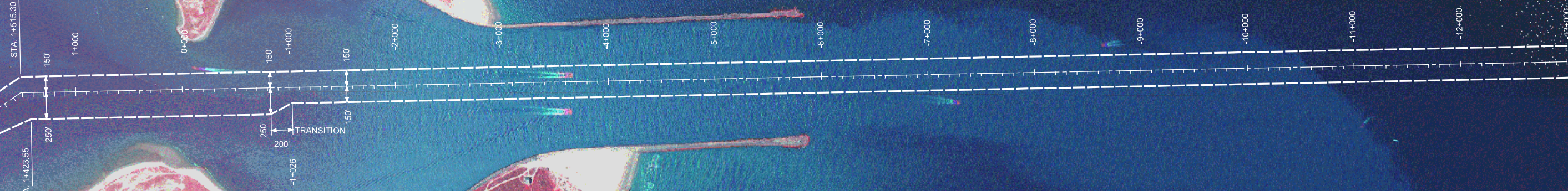
0 500 1,000 1,500  
SCALE IN FEET

Brazos Island Harbor (BIH) - 7



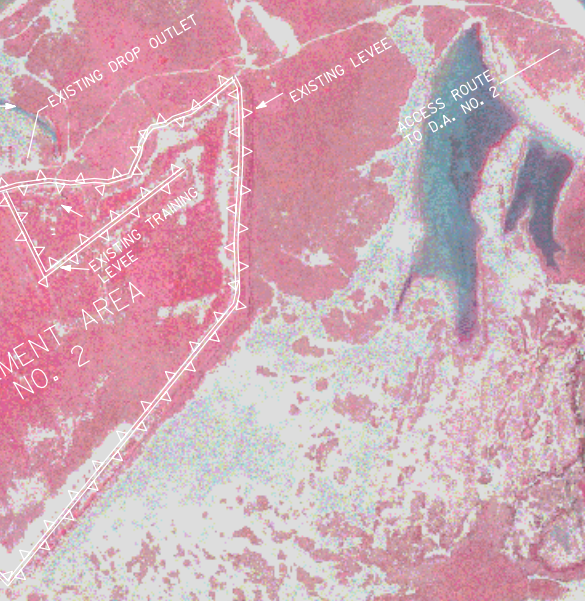


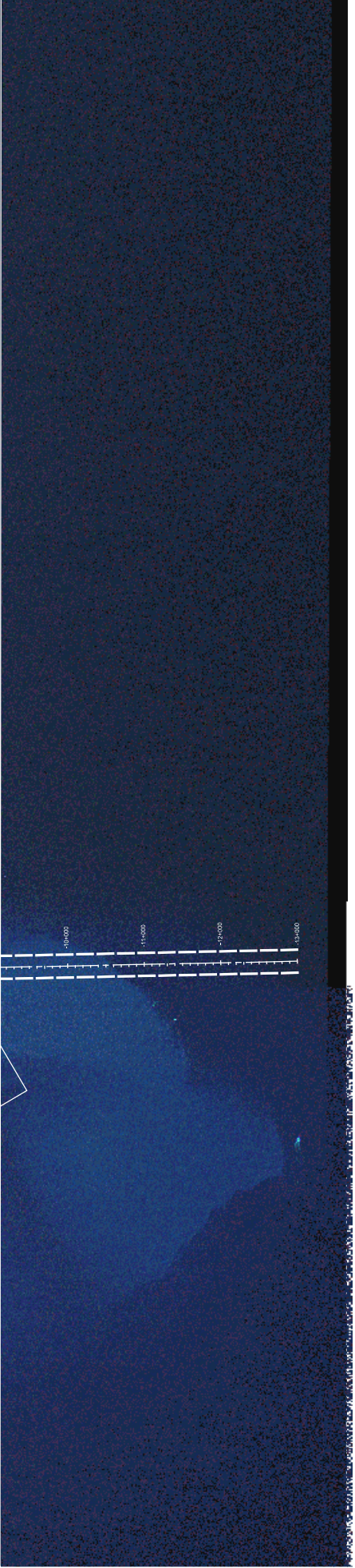
P.I. STA. 1+516.60  
X = 2,437,625.66  
Y = 147,279.89



STA. 2+328.82

STA. 1+423.55





OCEAN DREDGED MATERIAL  
PLACEMENT AREA

