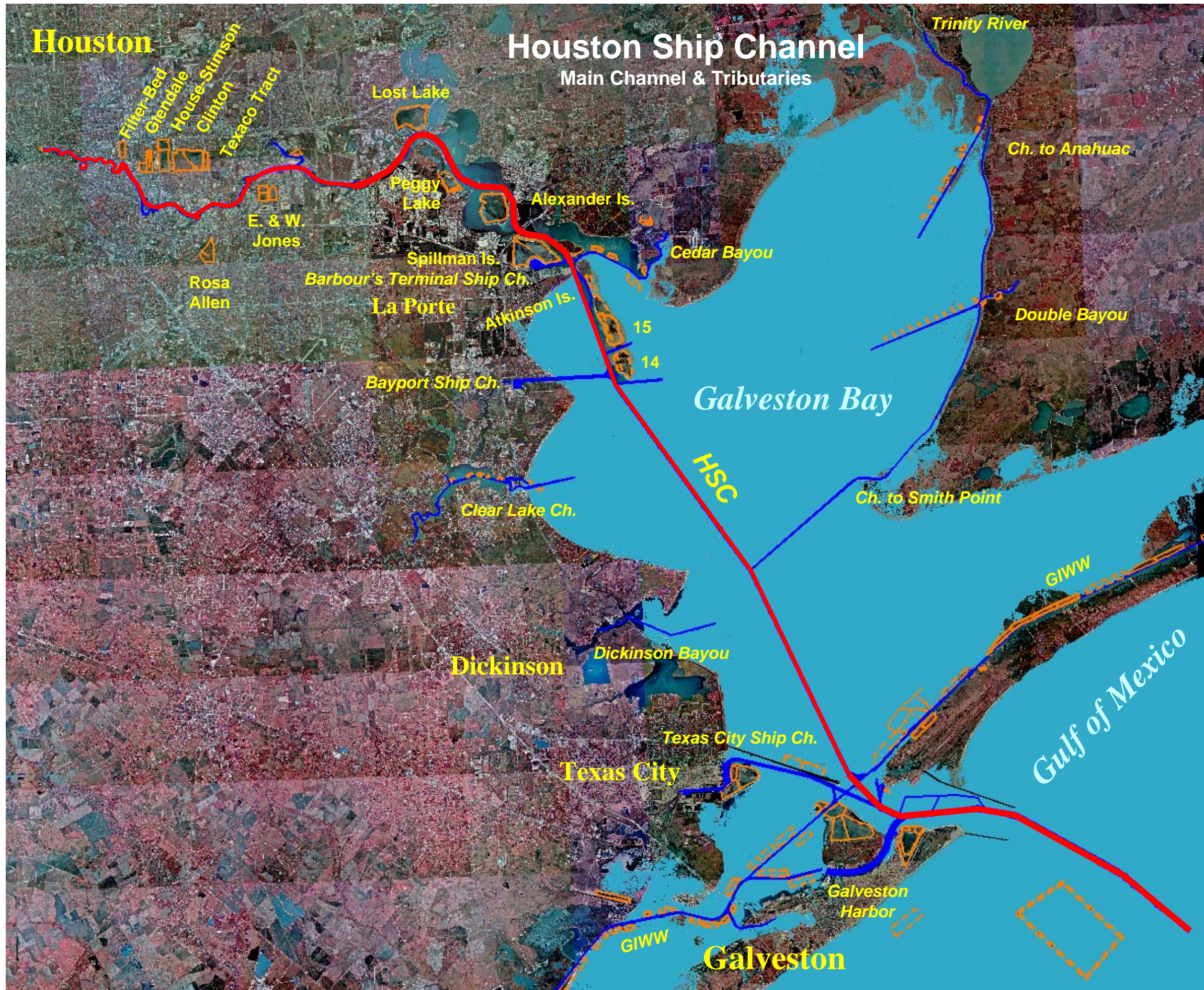




US Army Corps
of Engineers®
Galveston District

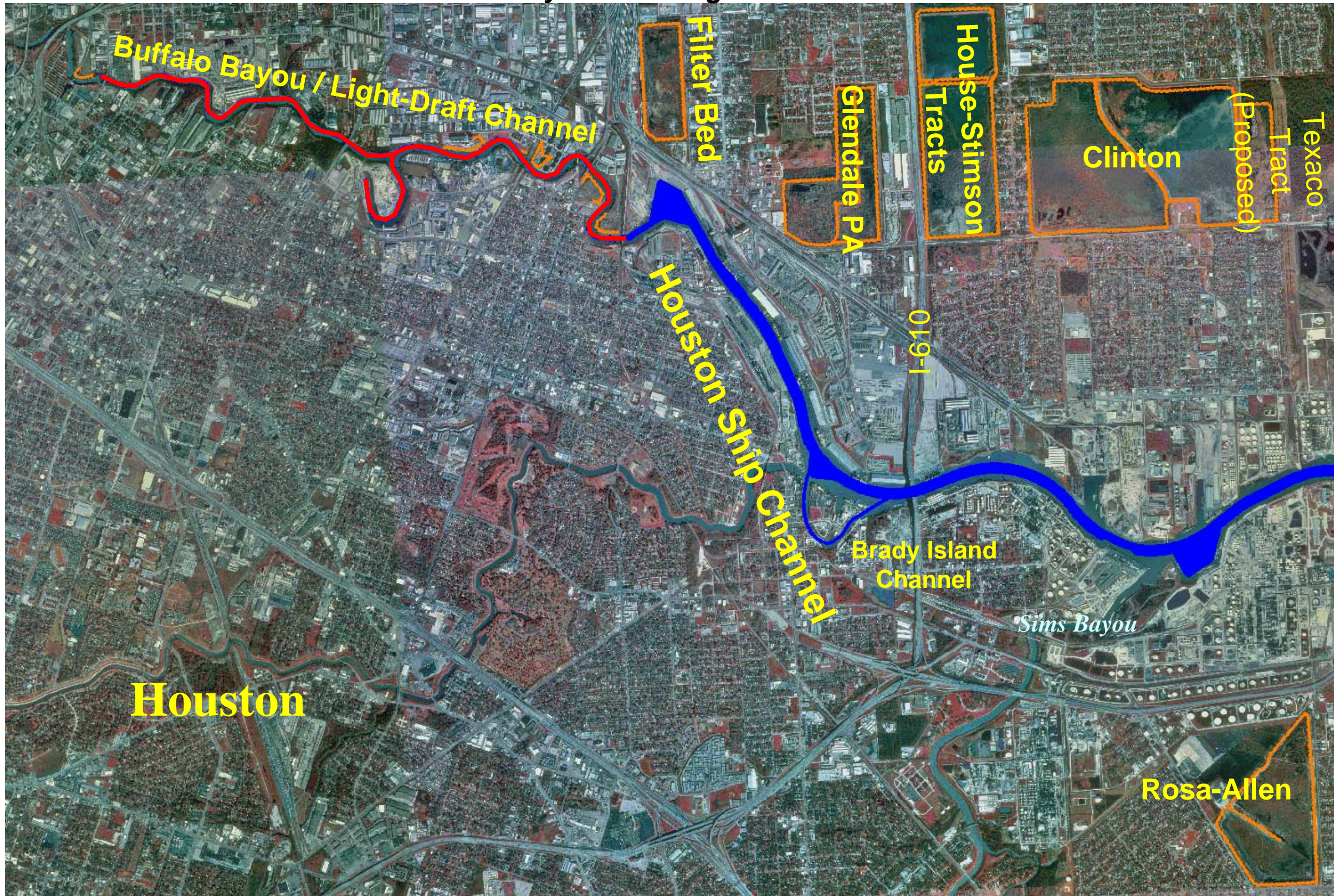




US Army Corps
of Engineers®
Galveston District

Houston Ship Channel

Buffalo Bayou / HSC Light-Draft Channel





Houston Ship Channel - Light-Draft 1

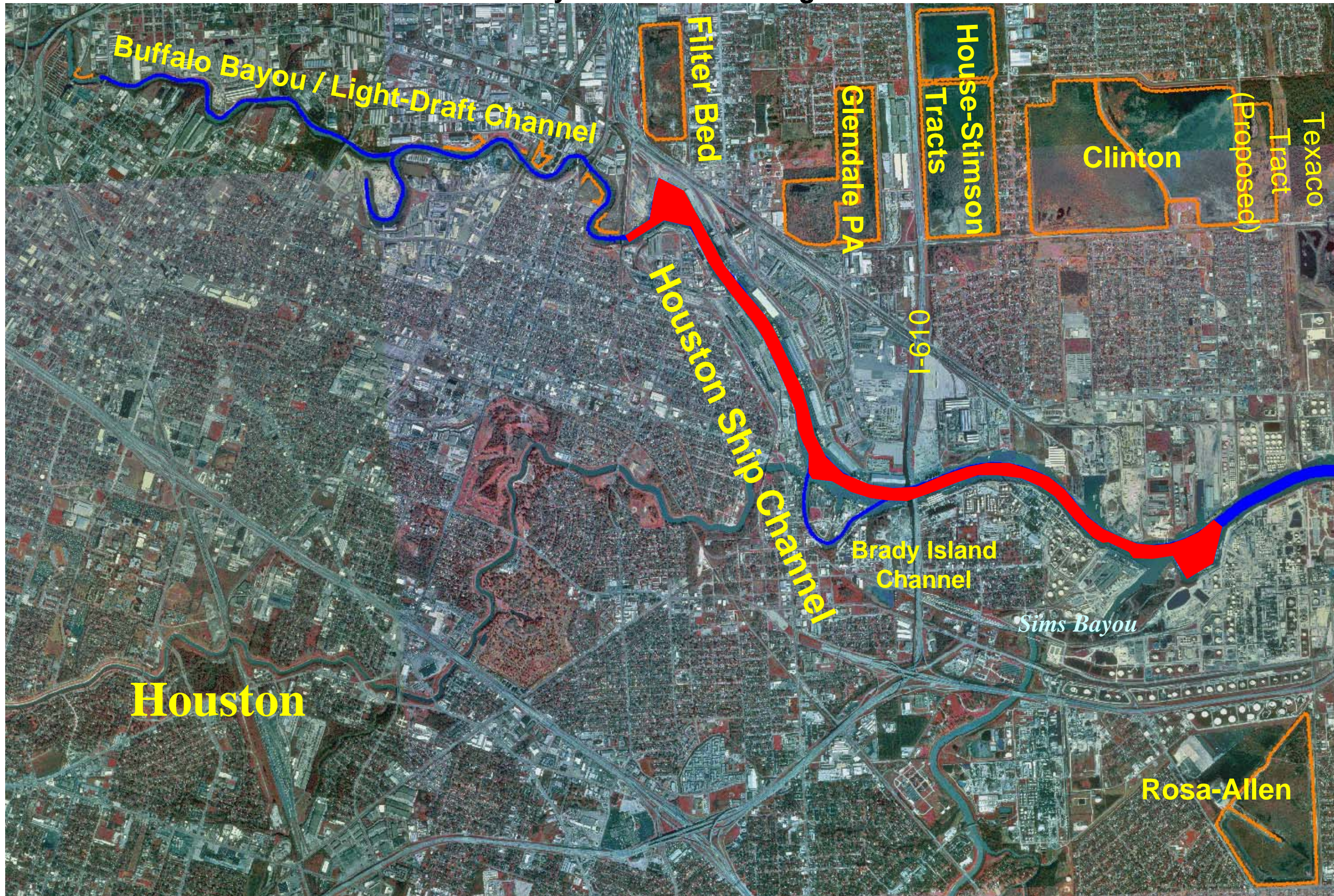
PLAN
 0 500 1,000 1,500
 SCALE IN FEET



US Army Corps
of Engineers®
Galveston District

Houston Ship Channel

Sims Bayou to Main Turning Basin





FILTER BED TRACT
PLACEMENT AREA

(NOT AVAILABLE
THIS CONTRACT)

FILTER BED TRACT
PLACEMENT AREA

(NOT AVAILABLE
THIS CONTRACT)

GLENDALE PLACEMENT AREA

STIMPSON-HOUSE TRACT
PLACEMENT AREA



PLAN

Houston Ship Channel 2





10000



STIMPSON-HOUSE TRACT
PLACEMENT AREA

STIMPSON-HOUSE TRACT
PLACEMENT AREA

CLINTON PLACEMENT AREA

CLINTON PLACEMENT AREA

CLINTON PLACEMENT AREA

CLINTON PLACEMENT AREA

LEVEE

LEVEE

Houston Ship Channel 3





HOUSTON SHIP CHANNEL
PT. STA. 1234+28.19
CURVE NO. 35
P.C. STA. 1250+14.06

PT. STA. 1235+71.35
CURVE NO. 34
P.C. STA. 1226+98.82

EQUATION:
STA. 1216+49.57 H.S.C. =
STA. 51+01.05 B.I.C.

EQUATION:
STA. 1171+11.18 H.S.C. =
STA. 23+11.18 B.I.C.

PT. STA. 40+99.75
CURVE NO. 7
P.C. STA. 39+00.64
PT. STA. 36+63.77
CURVE NO. 6
P.C. STA. 32+58.16

EQUATION:
STA. 1186+54.72 H.S.C. =
STA. 77+54.72 B.I.C.

PT. STA. 24+31.56
CURVE NO. 2
P.C. STA. 23+00.00
PT. STA. 28+15.40
CURVE NO. 3
P.C. STA. 16+41.10

PT. STA. 9+24.38
CURVE NO. 1
P.C. STA. 11+34.38

PT. STA. 1156+35.88
CURVE NO. 31
P.C. STA. 1158+15.2

EQUATION:
STA. 1124+47.81 H.S.C. =
STA. 12+47.81 B.I.C.

PT. STA. 1230+50
CURVE NO. 30
P.C. STA. 1193+10

PT. STA. 1027+07.74
CURVE NO. 29
P.C. STA. 1034+11.83

Houston Ship Channel 4

PLAN





SOOT BANK



ROSA ALLEN
DISPOSAL AREA

(NOT AVAILABLE
THIS CONTRACT)

Houston Ship Channel 5

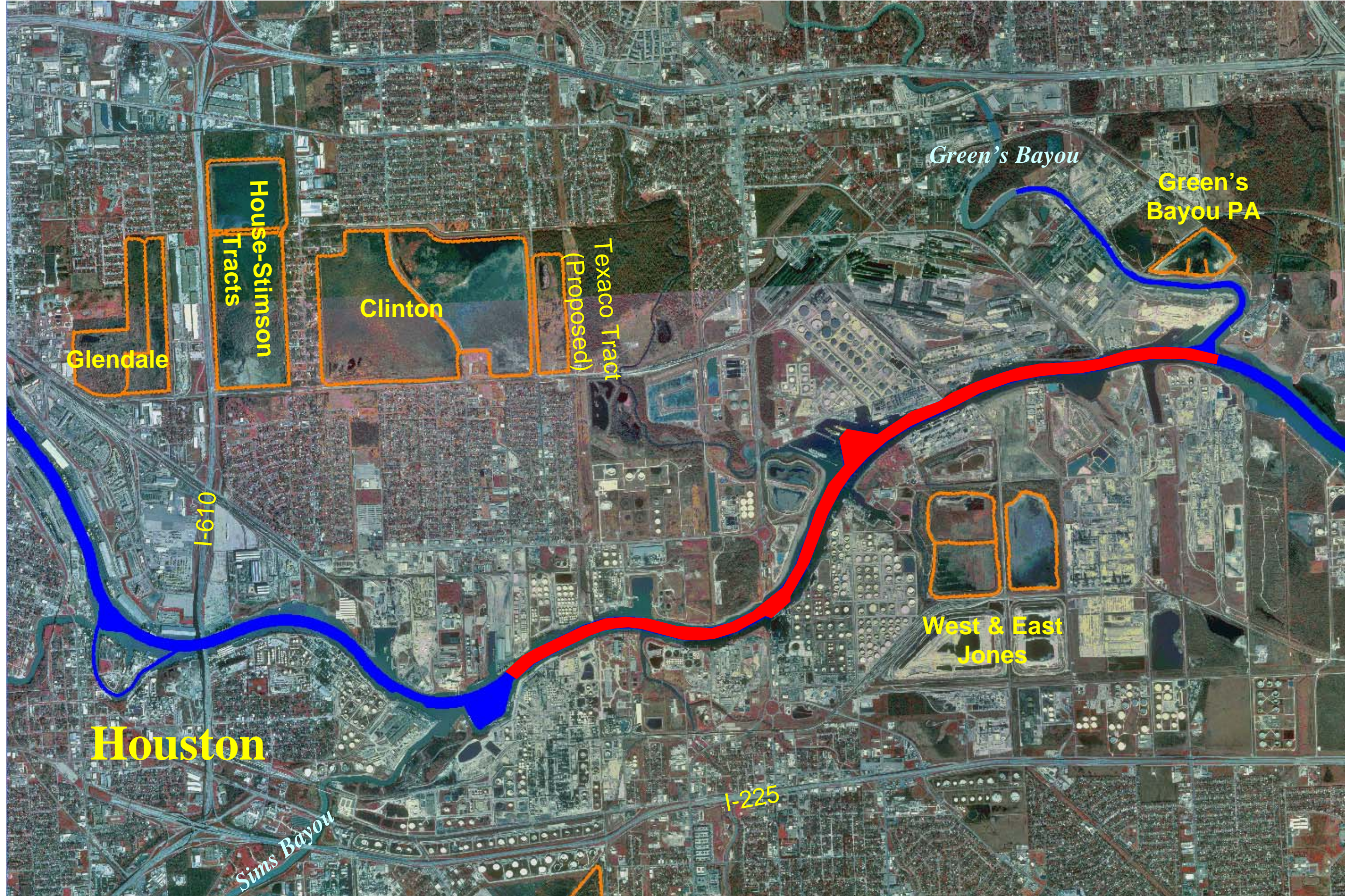


PLAN



US Army Corps
of Engineers®
Galveston District

Houston Ship Channel Green's Bayou to Sims Bayou





1100+00
1090+00
1080+00
1070+00
1060+00
1050+00
1040+00
1030+00
1020+00
1010+00
1000+00
990+00
980+00
970+00
960+00
950+00
940+00
930+00
920+00

SHIP CHANNEL
CLINTON ISLAND TURNING BASIN

1100+00
1090+00
1080+00
1070+00
1060+00
1050+00
1040+00
1030+00
1020+00
1010+00
1000+00
990+00
980+00
970+00
960+00
950+00
940+00
930+00
920+00

1000+00
990+00
980+00
970+00
960+00
950+00
940+00
930+00
920+00

1000+00
990+00
980+00
970+00
960+00
950+00
940+00
930+00
920+00

1000+00
990+00
980+00
970+00
960+00
950+00
940+00
930+00
920+00

1000+00
990+00
980+00
970+00
960+00
950+00
940+00
930+00
920+00

1000+00
990+00
980+00
970+00
960+00
950+00
940+00
930+00
920+00

1000+00
990+00
980+00
970+00
960+00
950+00
940+00
930+00
920+00

1000+00
990+00
980+00
970+00
960+00
950+00
940+00
930+00
920+00

1000+00
990+00
980+00
970+00
960+00
950+00
940+00
930+00
920+00

1000+00
990+00
980+00
970+00
960+00
950+00
940+00
930+00
920+00

1000+00
990+00
980+00
970+00
960+00
950+00
940+00
930+00
920+00

Houston Ship Channel 6

PLAN

SCALE IN FEET
0 500 1000 1500



HUNTING BAYOU TURNING BASIN

WEST JONES NORTH CELL
(NOT AVAILABLE THIS CONTRACT)

WEST JONES NORTH CELL
(NOT AVAILABLE THIS CONTRACT)

WEST JONES SOUTH CELL
(NOT AVAILABLE THIS CONTRACT)

EAST JONES DISPOSAL AREA

EAST JONES DISPOSAL AREA

Houston Ship Channel 7

PLAN



SCALE IN FEET



US Army Corps
of Engineers®
Galveston District

Houston Ship Channel Carpenter Bayou to Green's Bayou





760+00

710+00

700+00

730+00

740+00

720+00

700+00

700+00

690+00

690+00

680+00

670+00

660+00

650+00

640+00

630+00

620+00

610+00

CURVE No. 19

CURVE No. 18

P.C. STA. 724+99.38

P.C. STA. 728+06.63

X = 3,222,488.980
Y = 711,831.980

X = 3,226,870.86
Y = 711,521.28

X = 3,229,683.23
Y = 711,749.76

X = 3,232,614.94
Y = 713,288.29

P.I. STA. 684+06.58

X = 3,226,870.86
Y = 711,521.28

PLAN

0 500 1,000 1,500

SCALE IN FEET

Houston Ship Channel 8



P.I. STA. 531+52.166
 X = 3,239,242.215
 Y = 719,219.107

END FLARE
 STA. 527+35.122
 385'

STA. 544+06.545

P.I. STA. 550+66.002
 X = 3,238,246.345
 Y = 717,584.785

BEGIN TRANSITION
 STA. 570+00

END TRANSITION
 STA. 580+00

BEGIN FLARE
 STA. 631+56.817
 X = 3,232,614.94
 Y = 713,288.29

X = 3,235,427.45
 Y = 714,602.64

X = 3,229,683.23
 Y = 711,749.76

Houston Ship Channel 9

PLAN





US Army Corps
of Engineers®
Galveston District

Houston Ship Channel

Morgan's Point to Carpenter Bayou





LOST LAKE
PLACEMENT AREA

P.I. STA. 496+38.689

X = 3,241,024.00
Y = 722,621.610
D = 2° 8' 25"
A = 62° 25' 15"
R = 2677.002'
T = 1621.919'
L = 2316.463'

LOST LAKE
PLACEMENT AREA

P.I. STA. 469+51.658

X = 3,243,758.001
Y = 722,618.648
D = 1° 19' 14"
A = 28° 45' 2"
R = 4338.621'
T = 1111.974'
L = 2177.086'

P.I. STA. 447+08.648

X = 3,245,723.326
Y = 721,537.635

P.I. STA. 428+36.699

X = 3,247,292.018
Y = 720,455.400
D = 1° 50' 53"
A = 28° 50' 54"
R = 3100.525'
T = 797.472'
L = 1561.105'

P.I. STA. 531+52.166

X = 3,239,242.215
Y = 719,219.107

END TRANSITION - BEGIN
FLARE STA. 520+00

P.T. STA. 509+33.233
BEGIN 1100' TRANSITION

P.C.C. STA. 480+6.770

P.C. STA. 428+19.684

CURVE NO. 9

CURVE NO. 10

Houston Ship Channel 10

PLAN

SCALE IN FEET
500 1,000 1,500

CURVE NO. 9



P.T. STA. 420+39.227
CURVE NO. 8

P.C. STA. 420+00

40+00

400+00

390+00

380+00

600'

END TRANSITION
STA. 370+00

BEGIN TRANSITION
P.T. STA. 360+10.110

CURVE NO. 7

P.C. STA. 342+97.352

P.I. STA. 352+08.210

$X = 3,250,723.678$
 $Y = 73,387,593$
 $D = 1^{\circ} 49' 49''$
 $TRA = 32^{\circ} 26' 42''$
 $L = 910.850'$
 $L = 1772.758'$

PEGGY LAKE
PLACEMENT AREA

PEGGY LAKE
PLACEMENT AREA

340+00

350+00

530'

330+00

320+00

530'

310+00

300+00

530'

END TRANSITION
STA. 290+00

BEGIN TRANSITION
STA. 280+00

700'

CURVE NO. 6

P.C. STA. 299+35.174

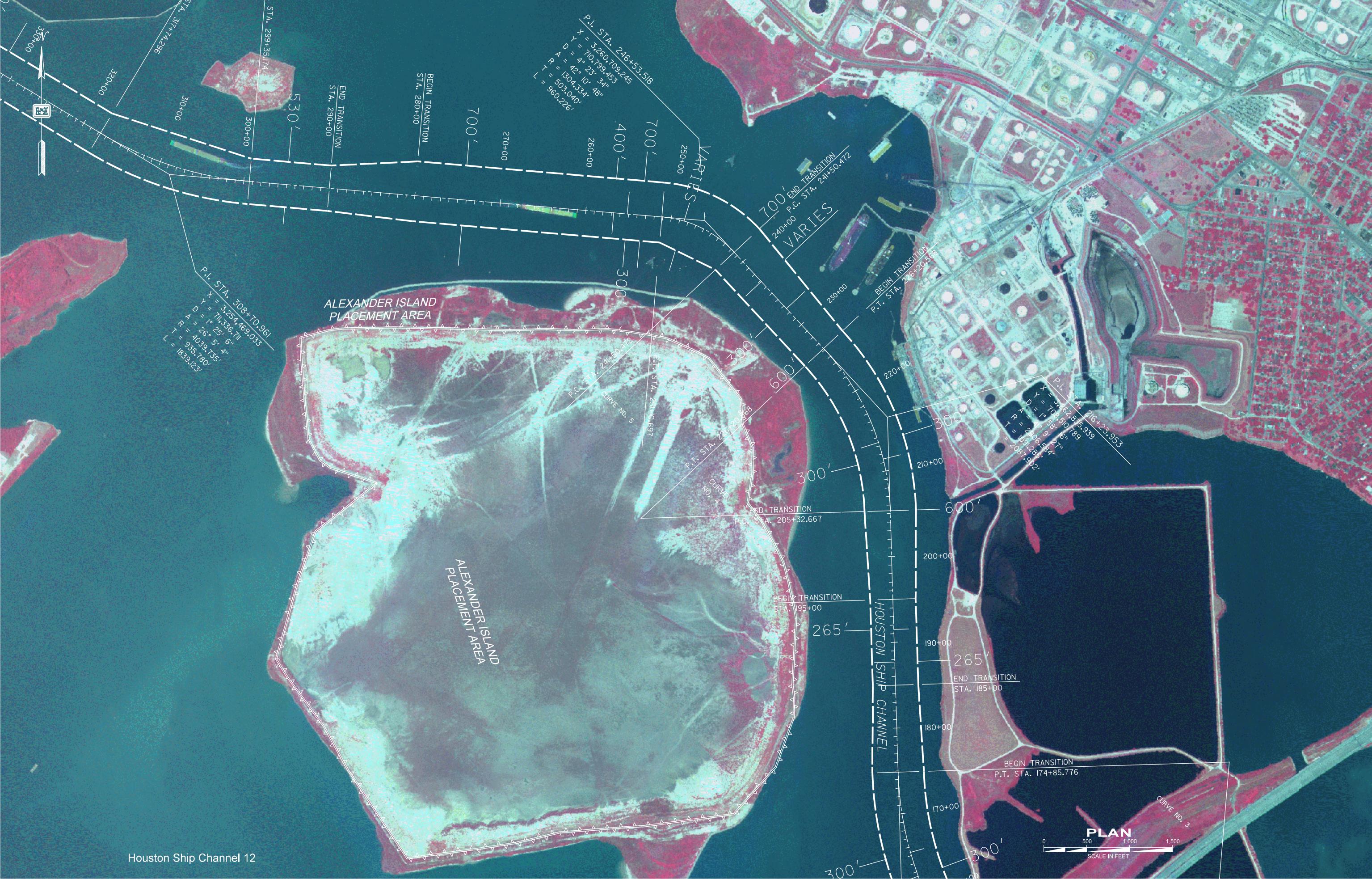
P.T. STA. 317+74.286



PLAN

Houston Ship Channel 11

ALEXANDER ISLAND





P.I. STA. 153+05.770
 X = 3,263,066.314
 Y = 700,334.022
 D = 83° 26' 36"
 A = 3860.373'
 L = 22.03'

P.I. STA. 86+22.865
 X = 3,269,872.205
 Y = 700,360.724
 D = 0° 49' 40"
 A = 35° 51' 16"
 R = 6920.527'
 T = 2238.908'
 L = 4330.726'

PLAN
 SCALE IN FEET
 0 500 1,000 1,500

SPILLMAN ISLAND
 PLACEMENT AREA

SPILLMAN ISLAND
 PLACEMENT AREA

P.I. STA. 16
 X = 3,275,
 Y = 695,7
 D = 1° 17'
 A = 29° 4
 R = 4434.6
 T = 1150.8
 L = 250.8