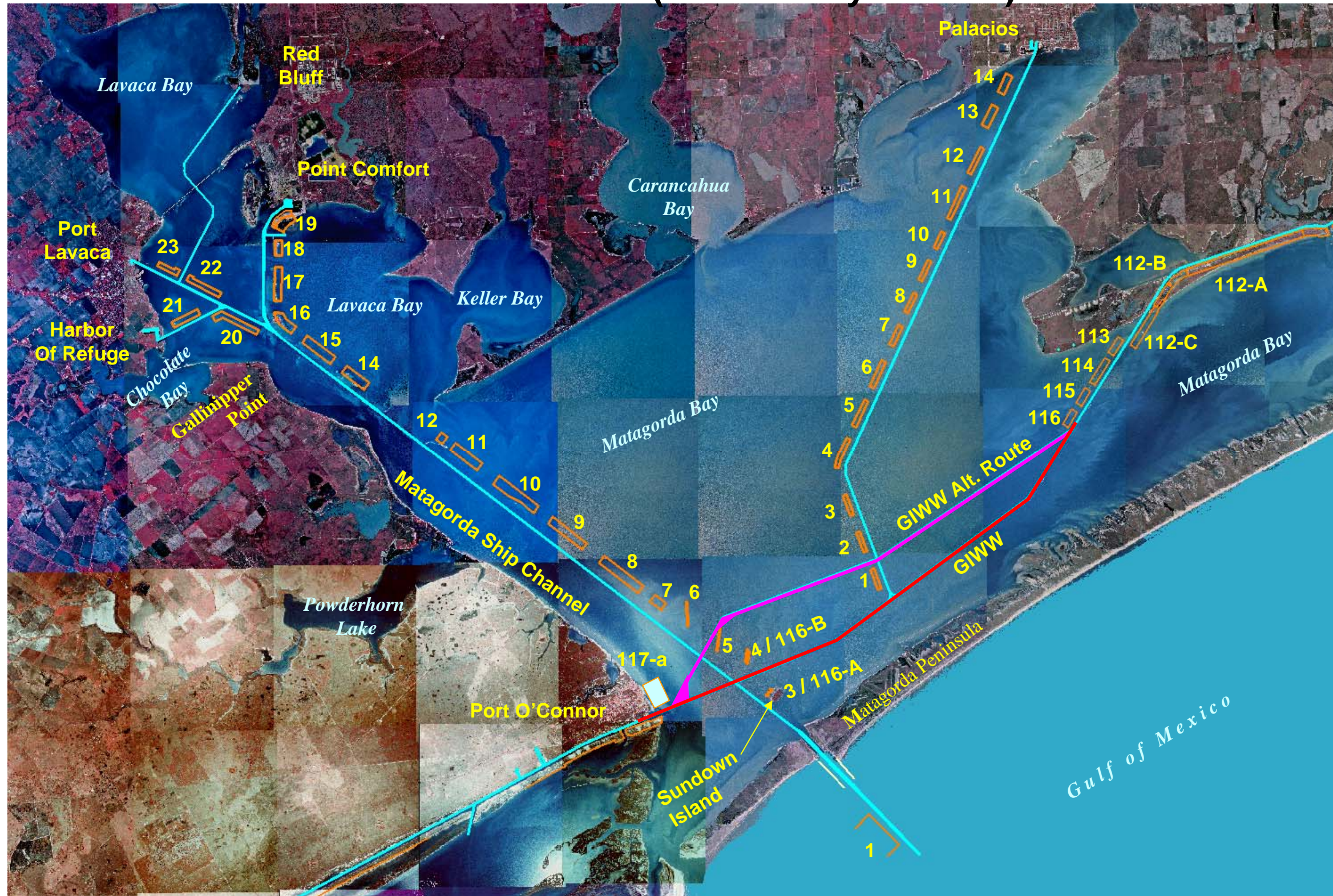


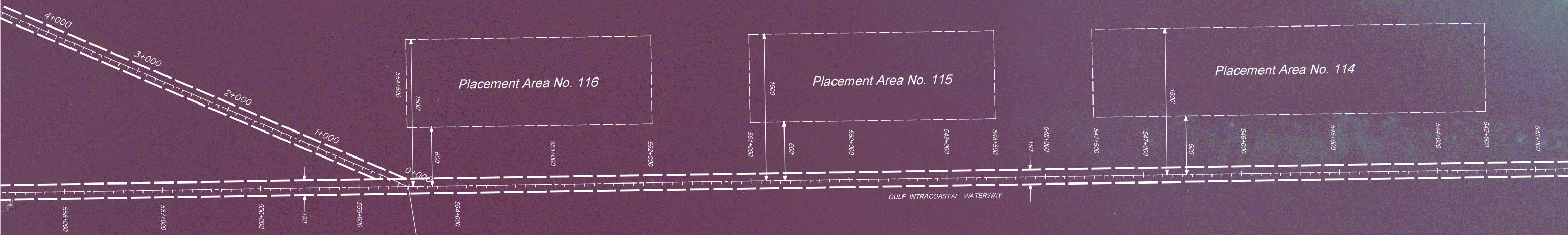
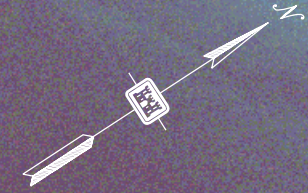


US Army Corps  
of Engineers®  
Galveston District

# GIWW – Gulf Intracoastal Waterway Across Matagorda Bay to Port O'Connor & Alternate Route (Natural Bay Bottom)

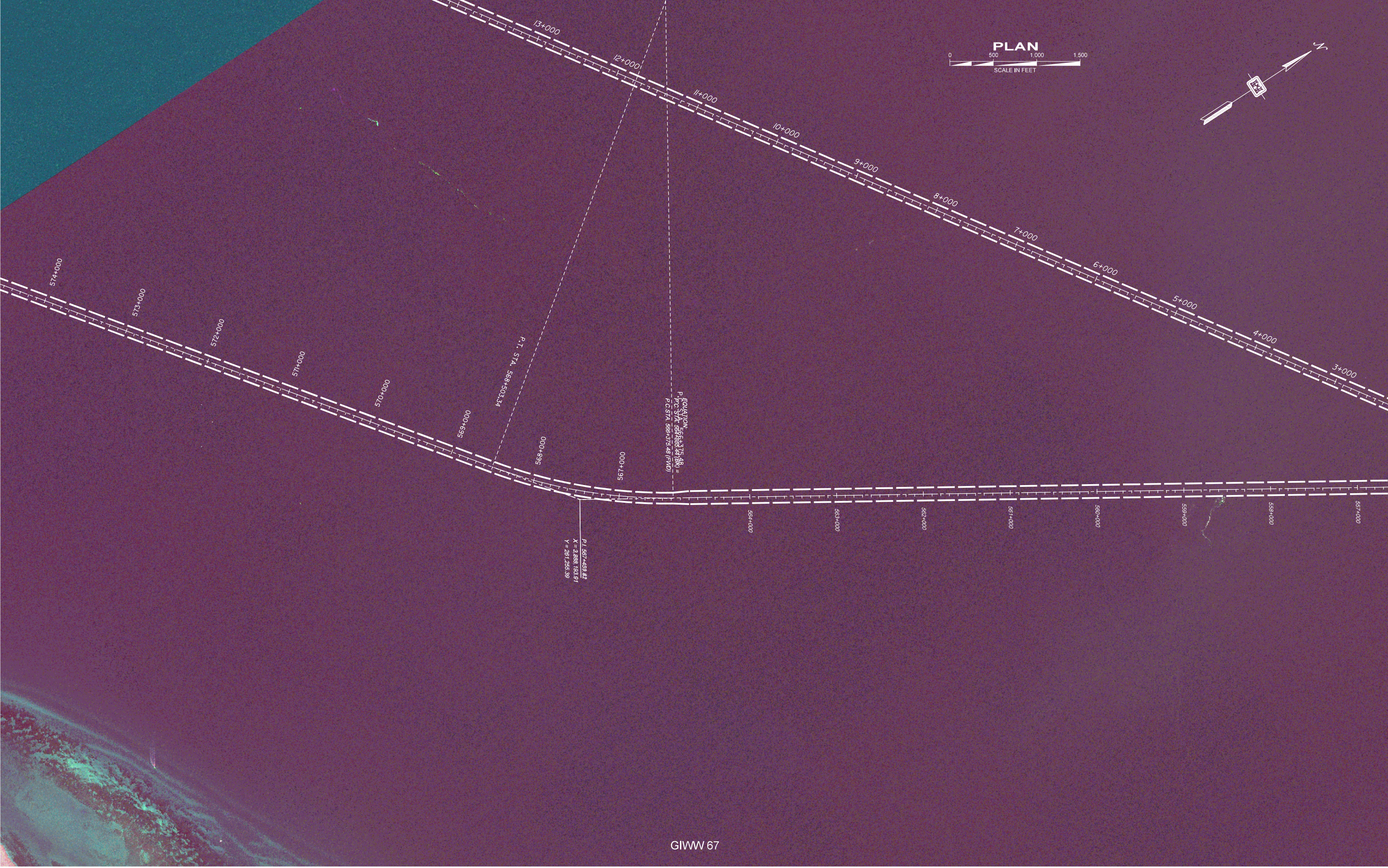
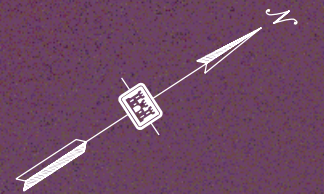






STA 554+500 (GIWW) =  
 0+000 (RELL GIMMENT)  
 X = 2,270,923.410  
 Y = 78,5495  
 LON: 92-114





574+000

573+000

572+000

571+000

570+000

569+000

568+895

567+000

566+000

565+000

564+000

563+000

562+000

561+000

560+000

559+000

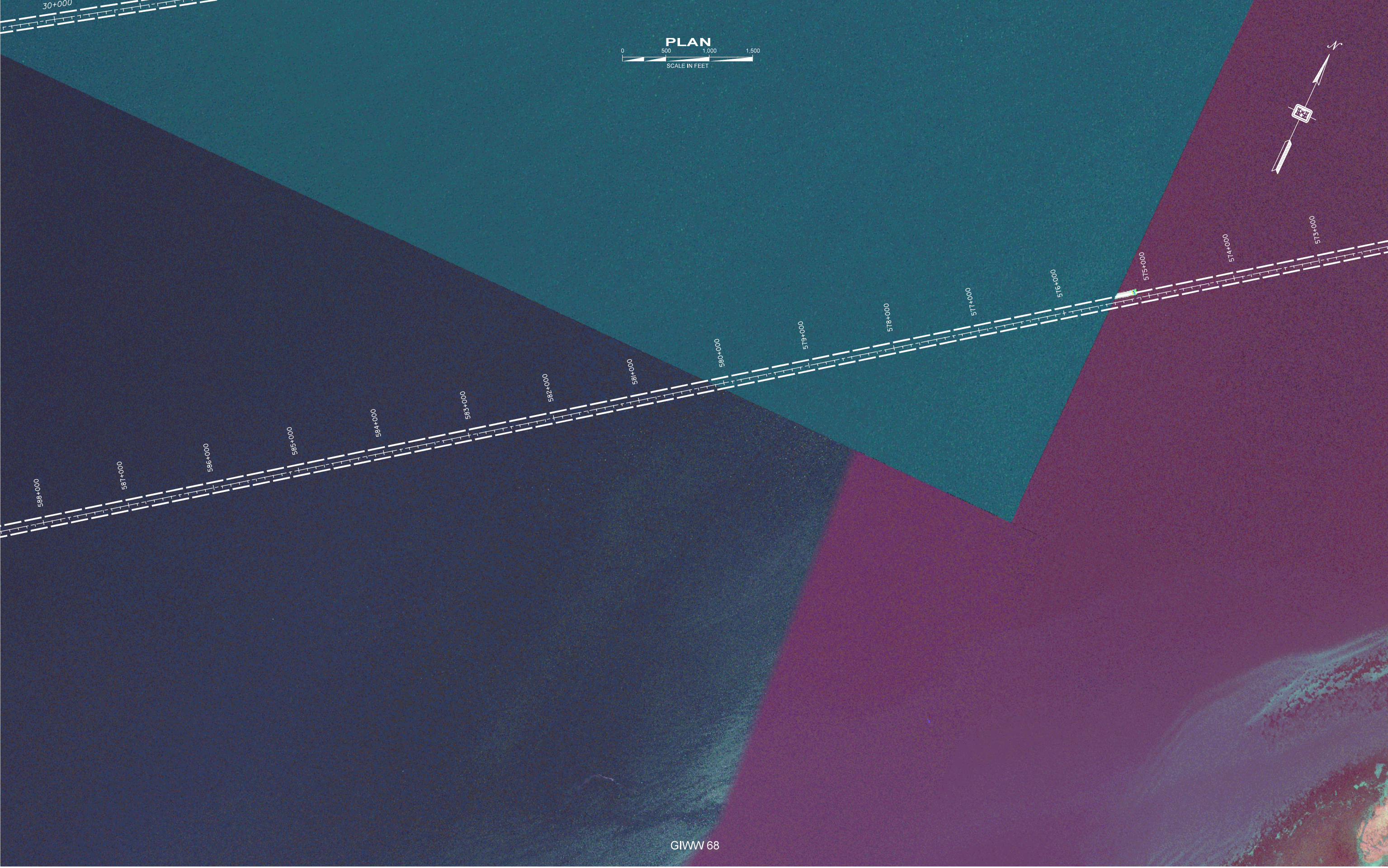
558+000

P.T. STA. 568+503.34

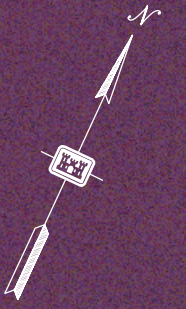
PC STA. 566+375.48  
P.O. STA. 569+375.48 (PVI)

P.I. 567+439.82  
X = 2,888,193.81  
Y = 291,285.98





PLAN  
0 500 1,000 1,500  
SCALE IN FEET



588+000

587+000

586+000

585+000

584+000

583+000

582+000

581+000

580+000

579+000

578+000

577+000

576+000

575+000

574+000

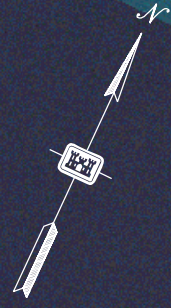
573+000



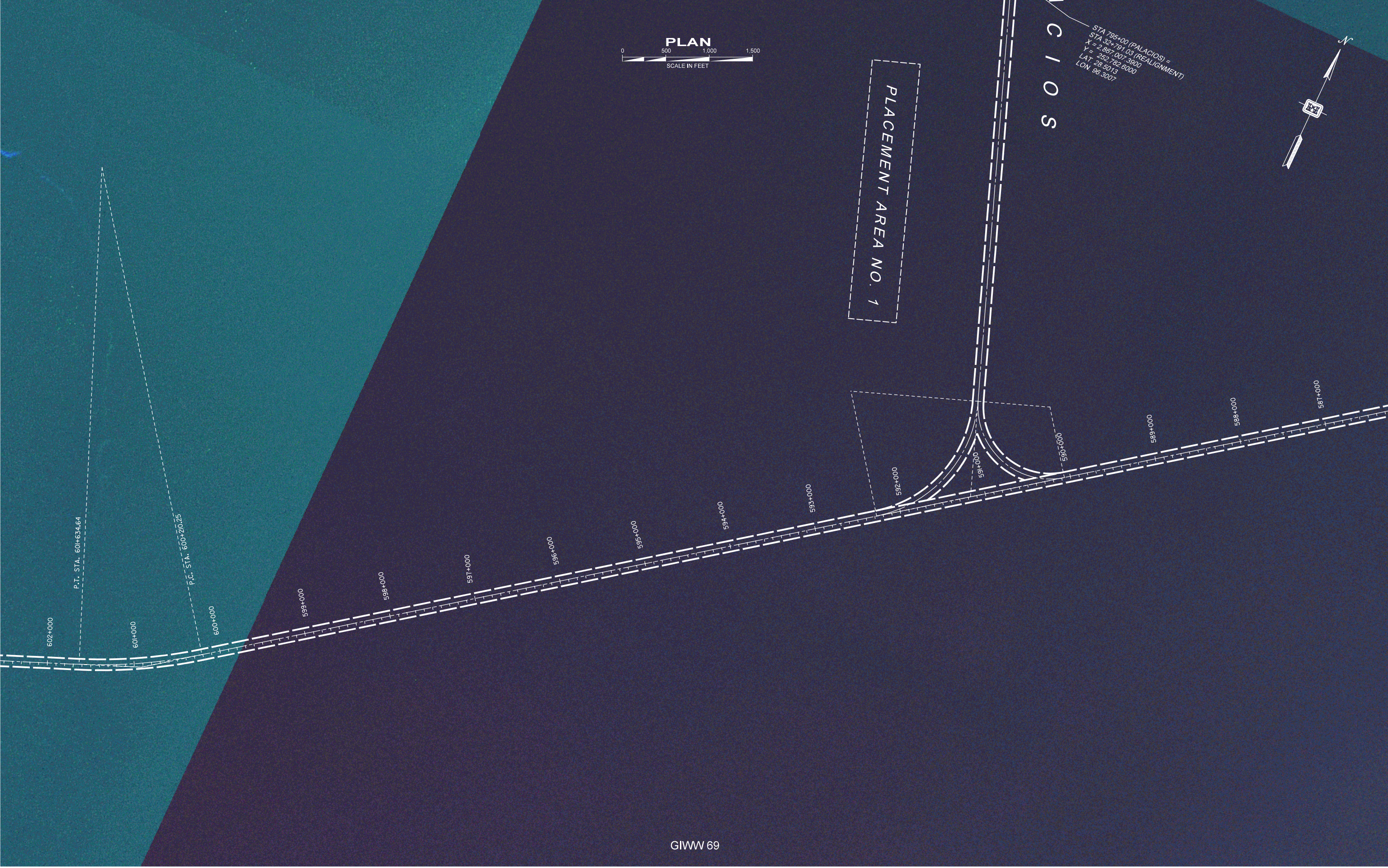


Palacios

STA 795+00 (PALACIOS) =  
STA 32+791.03 (REALIGNMENT)  
X = 2,867,007.3900  
Y = 257,782.6000  
LAT 28.5013  
LON 98.3007



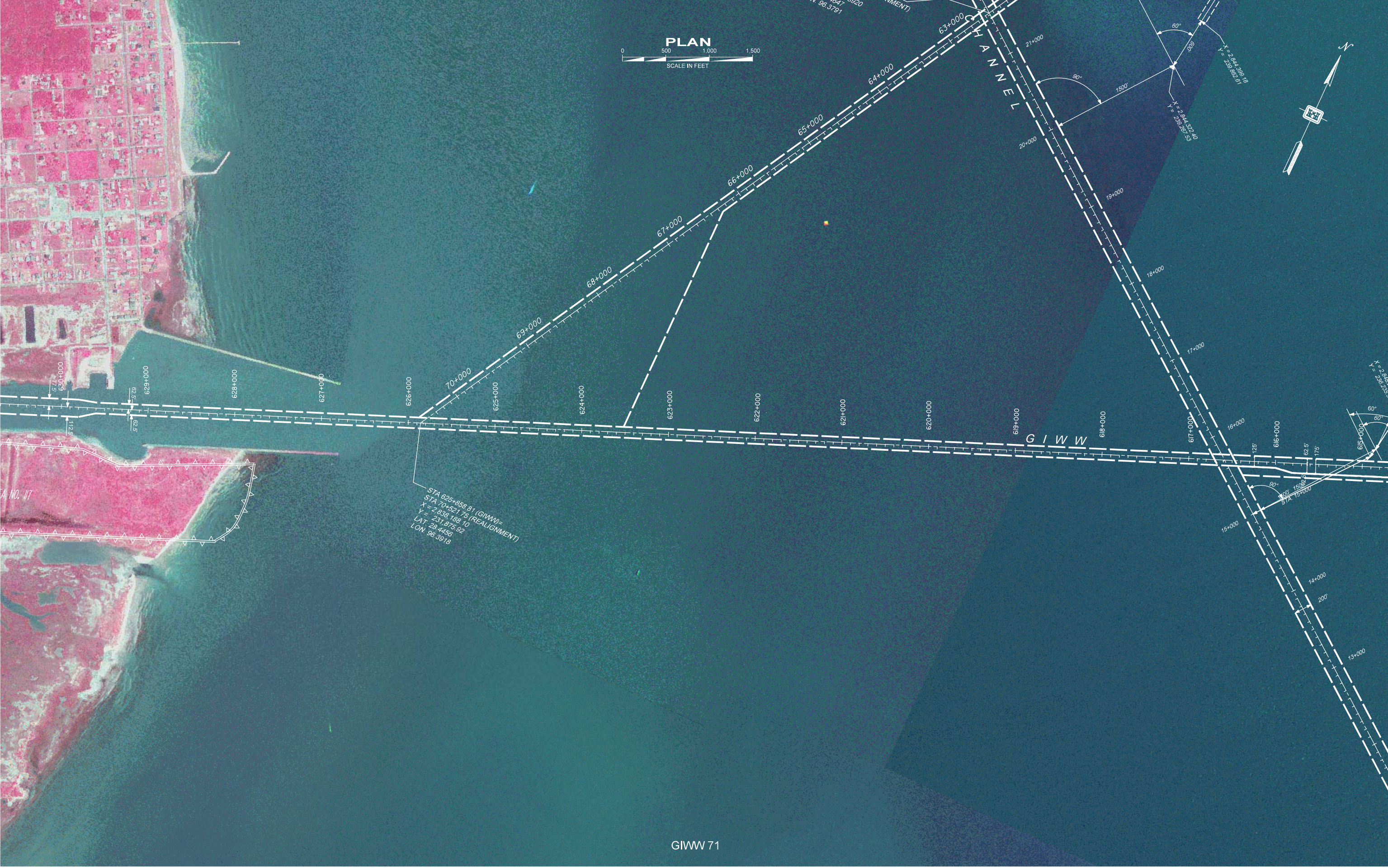
PLACEMENT AREA NO. 1











STA 625+888.81 (GIWW)  
STA 70+521.75 (REALIGNMENT)  
X = 2,838,188.10  
Y = 231,875.92  
LAT: 28.4456  
LON: 96.3918