

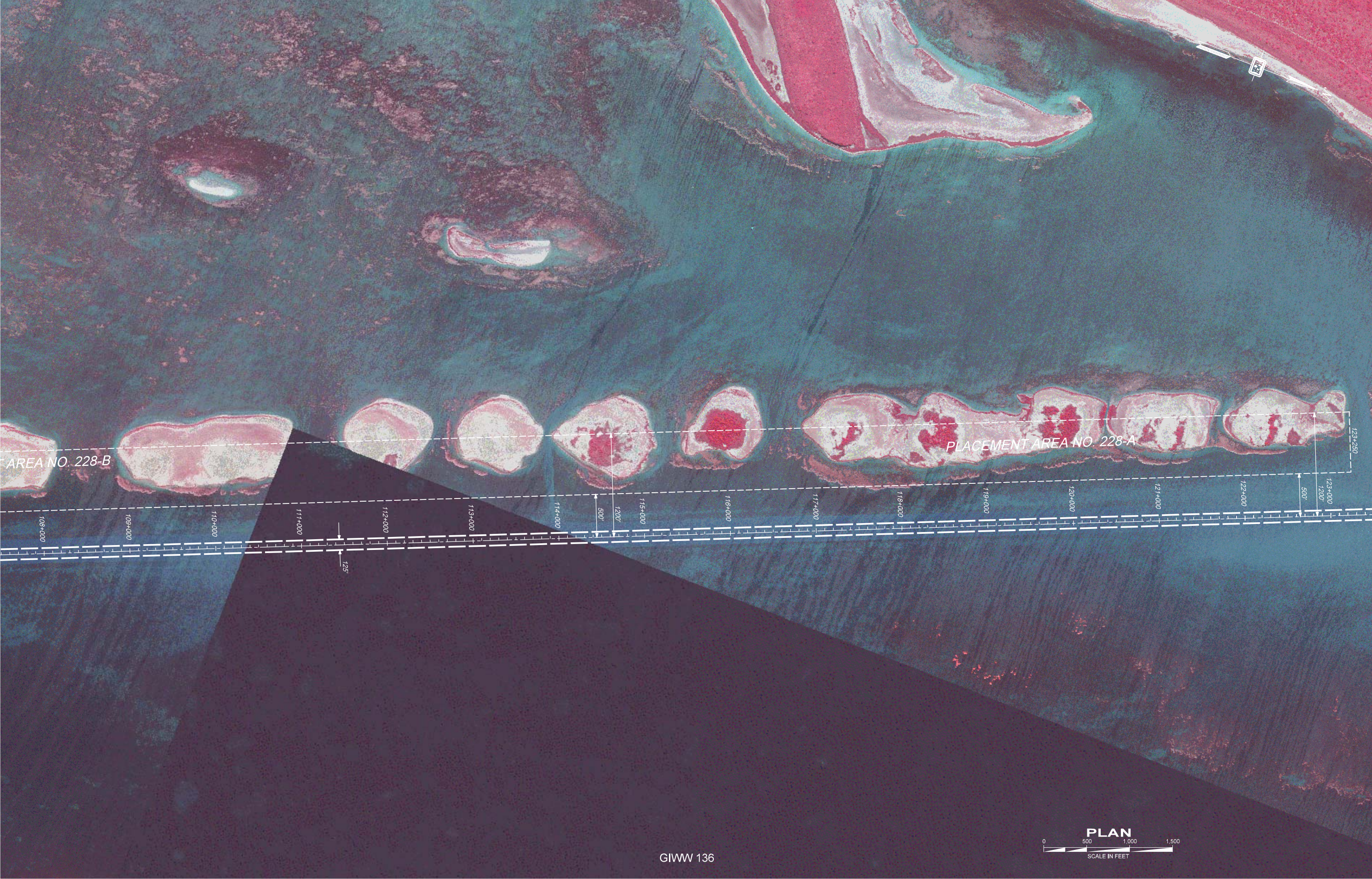


US Army Corps
of Engineers®
Galveston District

GIWW – Gulf Intracoastal Waterway Arroyo Colorado to Port Isabel







AREA NO. 228-B

PLACEMENT AREA NO. 228-A

108+000 109+000 110+000 111+000 112+000 113+000 114+000 115+000 116+000 117+000 118+000 119+000 120+000 121+000 122+000 123+000 123+250

125'

500'

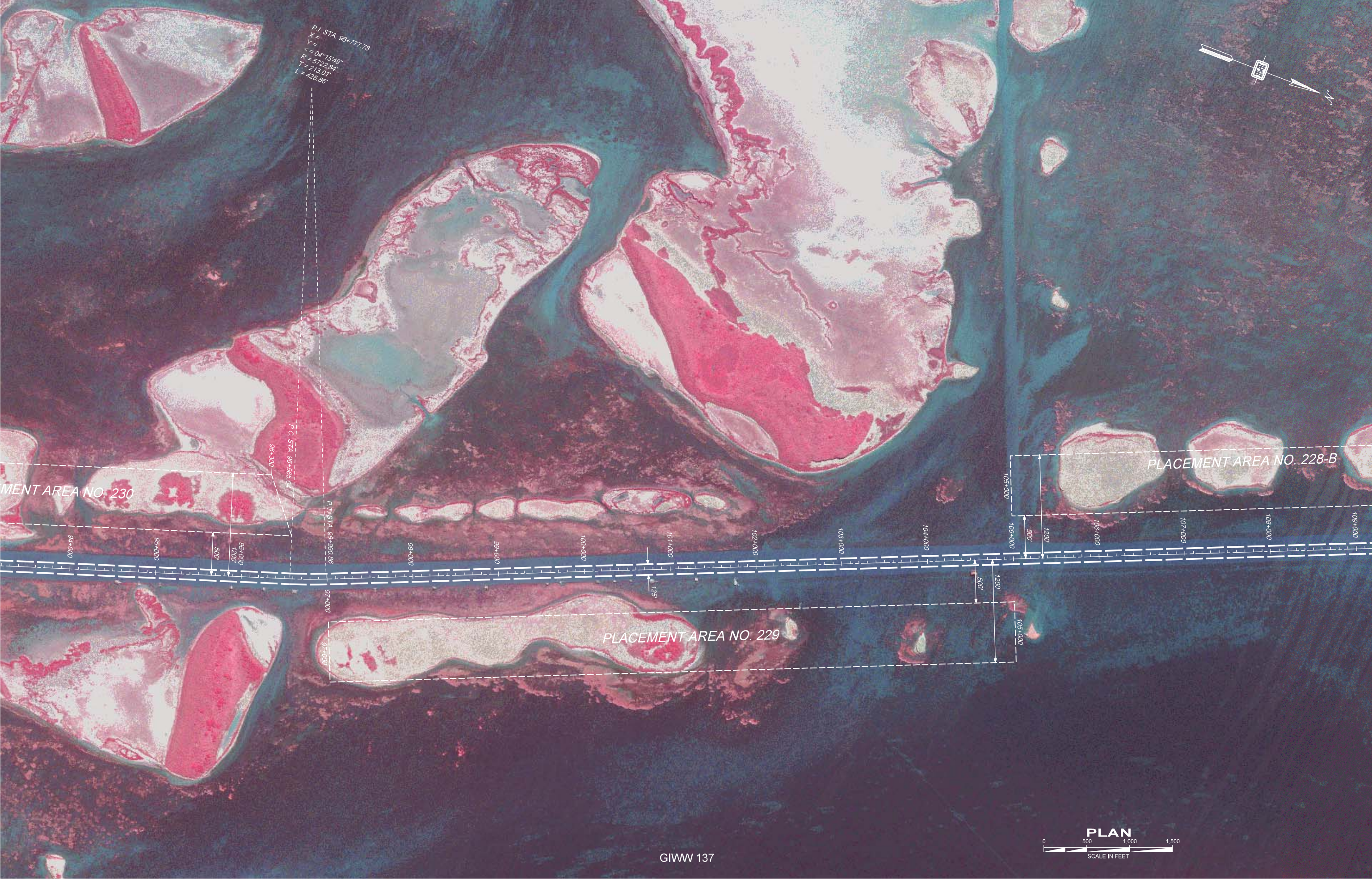
1200'

500'

1200'

123+250





P.I. STA. 96+777.78
X =
Y =
Δ = 04°15'49"
R = 5722.84'
T = 213.01'
L = 425.86'

PLACEMENT AREA NO. 230

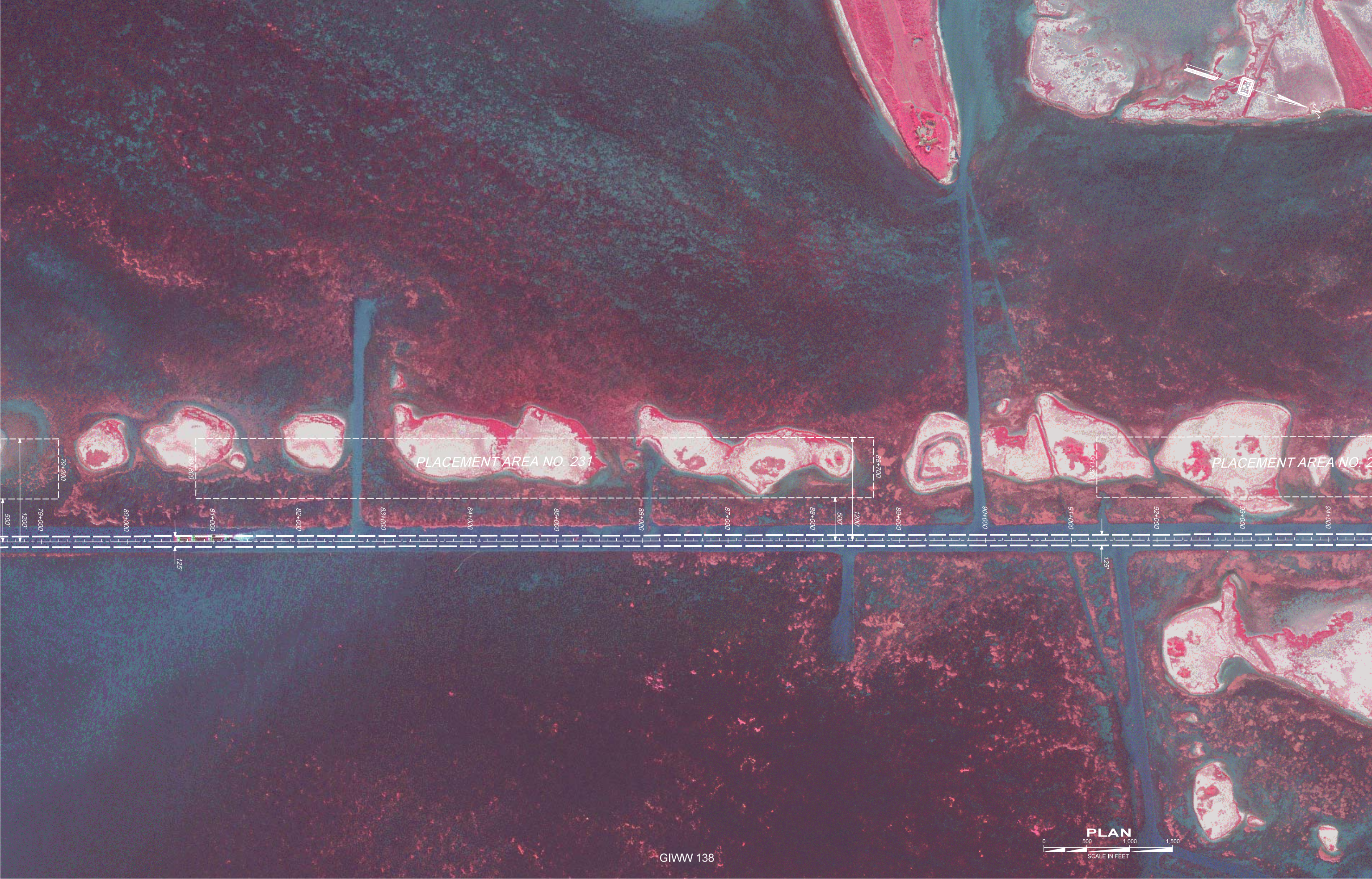
96+300
P.C. STA. 96+665.04

P.T. STA. 96+990.86

PLACEMENT AREA NO. 228-B

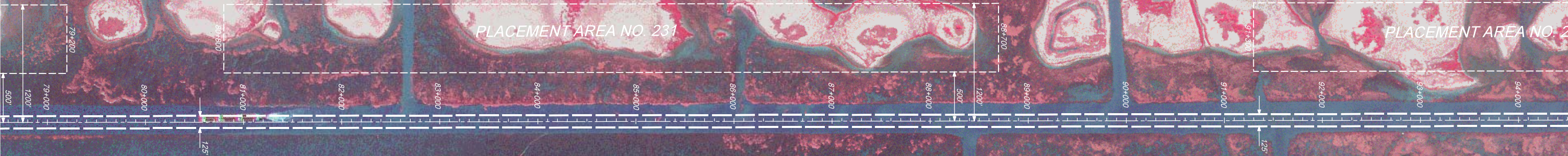
PLACEMENT AREA NO. 229

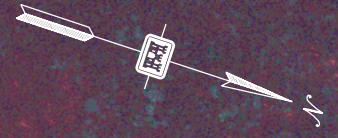
PLAN
0 500 1,000 1,500
SCALE IN FEET



PLACEMENT AREA NO. 231

PLACEMENT AREA NO. 2

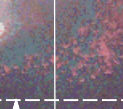
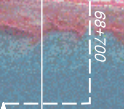




PLACEMENT AREA NO. 233

PLACEMENT AREA NO. 232

66+000 67+000 68+000 69+000 70+000 71+000 72+000 73+000 74+000 75+000 76+000 77+000 78+000 79+000 80+000

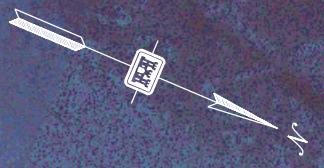


125'



PLAN

SCALE IN FEET



PLACEMENT AREA NO. 233

PLACEMENT AREA

50+000

51+000

52+000

53+000

54+000

55+000

56+000

57+000

58+000

59+000

60+000

61+000

62+000

63+000

64+000

65+000

66+000

67+000

68+000

69+000

P.C. STA. 58+272.14

P.T. STA. 59+178.50

500'

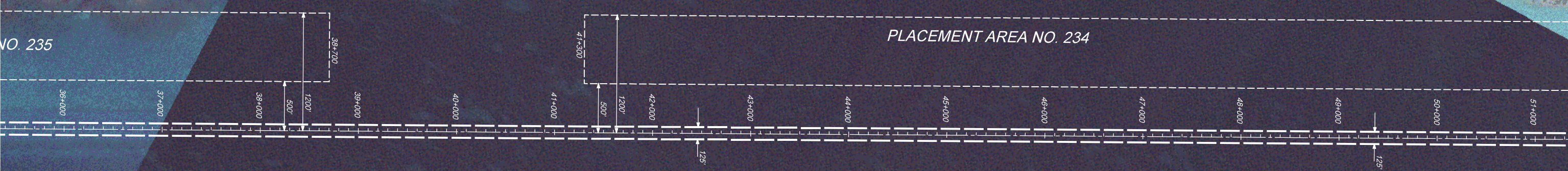
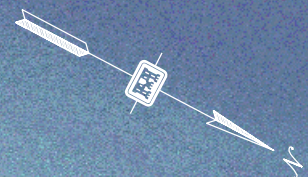
1200'

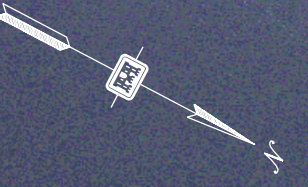
55+800

500'

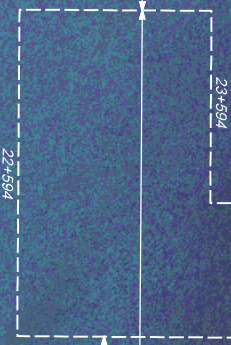
1200'

125'





1400'

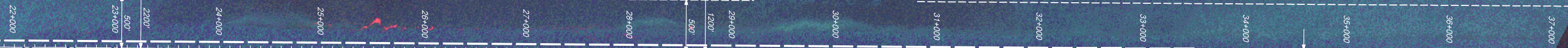


PLACEMENT AREA NO. 236

29+200

30+900

PLACEMENT AREA NO. 235



125'





13+000
12+000
11+000
10+000
9+000
8+000
7+000
6+000
5+000
4+000

PI STA 7+079.29
X = 40+69.35'
Y = 5340.47'
Z = 1221.29'
L = 2342.00'

PI STA 10+585.09
X = 39+25.25'
Y = 4892.33'
Z = 1785.09'
L = 3428.14'

P.T. STA 12+227.95

P.C. STA 13+689.19

P.T. STA 18+916.76
X = 79+59.08"
Y = 5328.49"
Z = 1922.71"
L = 1641.57'

PLACEMENT AREA 240

PLACEMENT AREA NO. 239

Transition

PLAN
0 500 1,000 1,500
SCALE IN FEET



PLACEMENT AREA NO. 4

EXISTING SPILLWAY
150' DIAM. PIPE
SEE SPECIFICATIONS

200' OF LEVEL
TO BE REPAIRED

EXISTING LEVEL

EXISTING EFFLUENT DITCH
EXISTING SPILLWAY
SEE SPECIFICATIONS

PLACEMENT AREA NO. 3

PLACEMENT AREA NO. 241

WEST WYE

EAST WYE

21+000
20+000
19+000
18+000
17+000
16+000
15+400
15+275
15+000
14+000
13+000
12+000
11+000

P.C. STA. 13+250.00

P.T. STA. 30+04.35
L=30.00'
X=147.17'
Y=147.17'

P.T. STA. 30+04.35

P.T. STA. 17+809.51

GIWW P.C. STA. 6+858.00 F.W.D. = 3+903.23 BK

P.T. STA. 10+70.26
L=107.00'
X=107.00'
Y=107.00'

P.T. STA. 10+585.00
L=107.00'
X=107.00'
Y=107.00'

P.C. STA. 8+789.75

N26°59'32.17"W

P.T. STA. 12+227.95

K=2421.88
L=16108.5'
X=1403.94
Y=16503.88

K=2421.88
L=16108.5'
X=1403.94
Y=16503.88

PLAN
SCALE IN FEET
0 500 1000 1500

GIWW 144