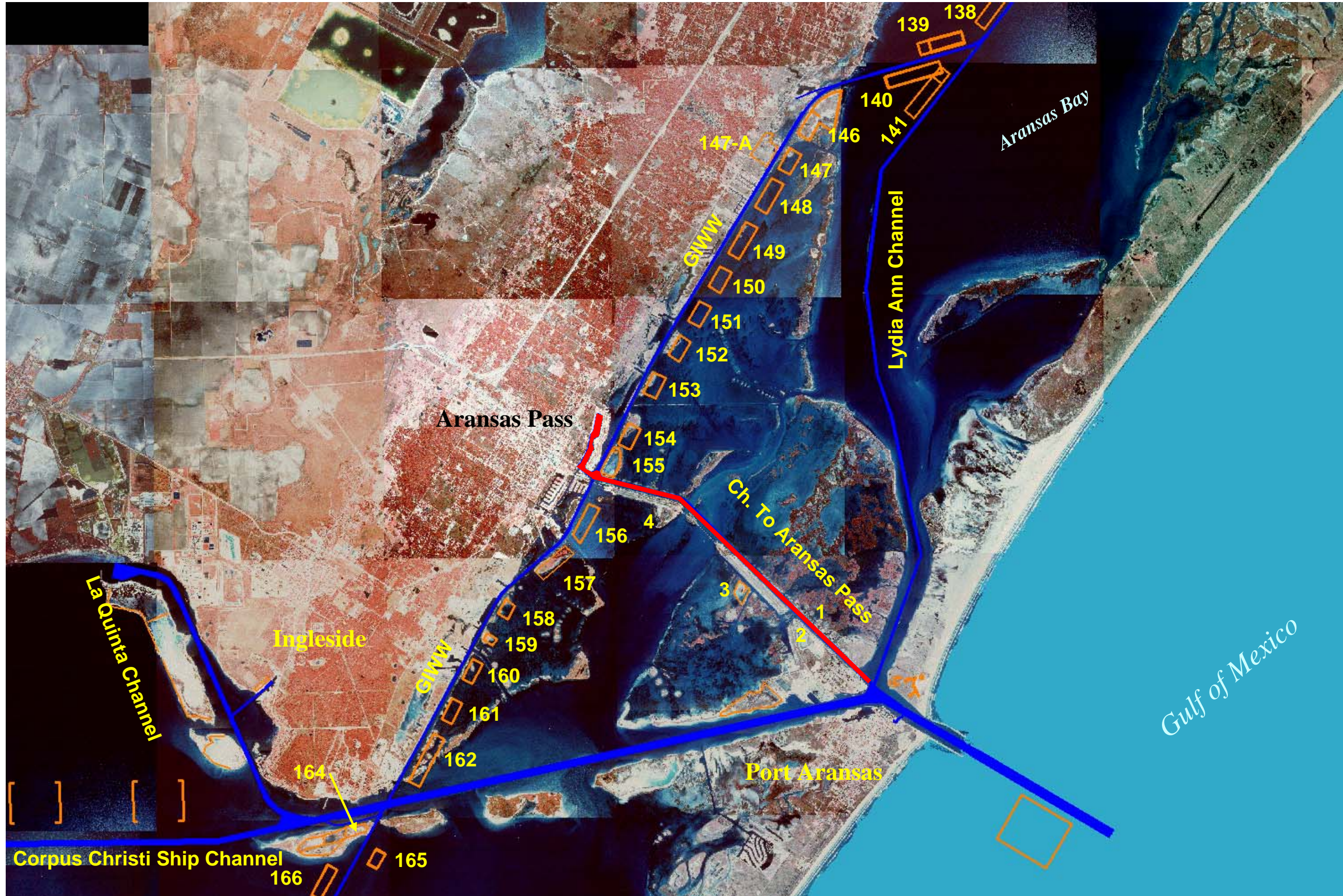




US Army Corps  
of Engineers®  
Galveston District

# GIWW Tributaries

## Channel to Aransas Pass & Conn Brown Harbor





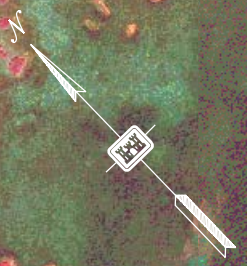
X = 2,449,052.00  
Y = 811,194.24

CURVE DATA

△	= 30°12' 02"
R	= 2,864.93'
T	= 773.03'
L	= 1,510.10'

X = 2,440,789.84  
Y = 813,362.24

PLACEMENT AREA NO. 4  
NOT AVAILABLE IN THIS CONTRACT



$X = 2,449,052.00$   
 $Y = 811,194.24$   
CURVE DATA  
= 30°12'02"  
R = 2,884.93'  
T = 773.83'  
L = 1,510.10'

230+00 220+00 210+00 200+00 190+00 180+00 170+00 160+00 150+00 140+00 130+00 120+00 110+00 100+00 90+00 80+00

PLACEMENT AREA NO. 4  
NOT AVAILABLE IN THIS CONTRACT  
P.C. STA 221+69.25

EXISTING LEVEE TO BE RAISED

PLACEMENT AREA NO. 3

P.I. STA 76+85.77  
 $X = 2,459.8$   
 $Y = 800.4$

PLAN



Aransas Pass Channel 2



LYDIA ANN CHANNEL

ISLAND

ISLAND

CHANNEL TO ARANSAS PASS

P.I. STA. 76+85.77  
X = 2,453,857.26  
Y = 800,427.23

PLACEMENT  
AREA NO. 2

HARBOR

ANCORAGE  
BASIN

Aransas Pass Channel 3

EXISTING SAND DUNES  
EXISTING SAND DUMPS  
PLACEMENT  
AREA NO. 2  
EXISTING  
LEET  
AND  
DUNES

PLAN

SCALE IN FEET



0 500 1,000 1,500