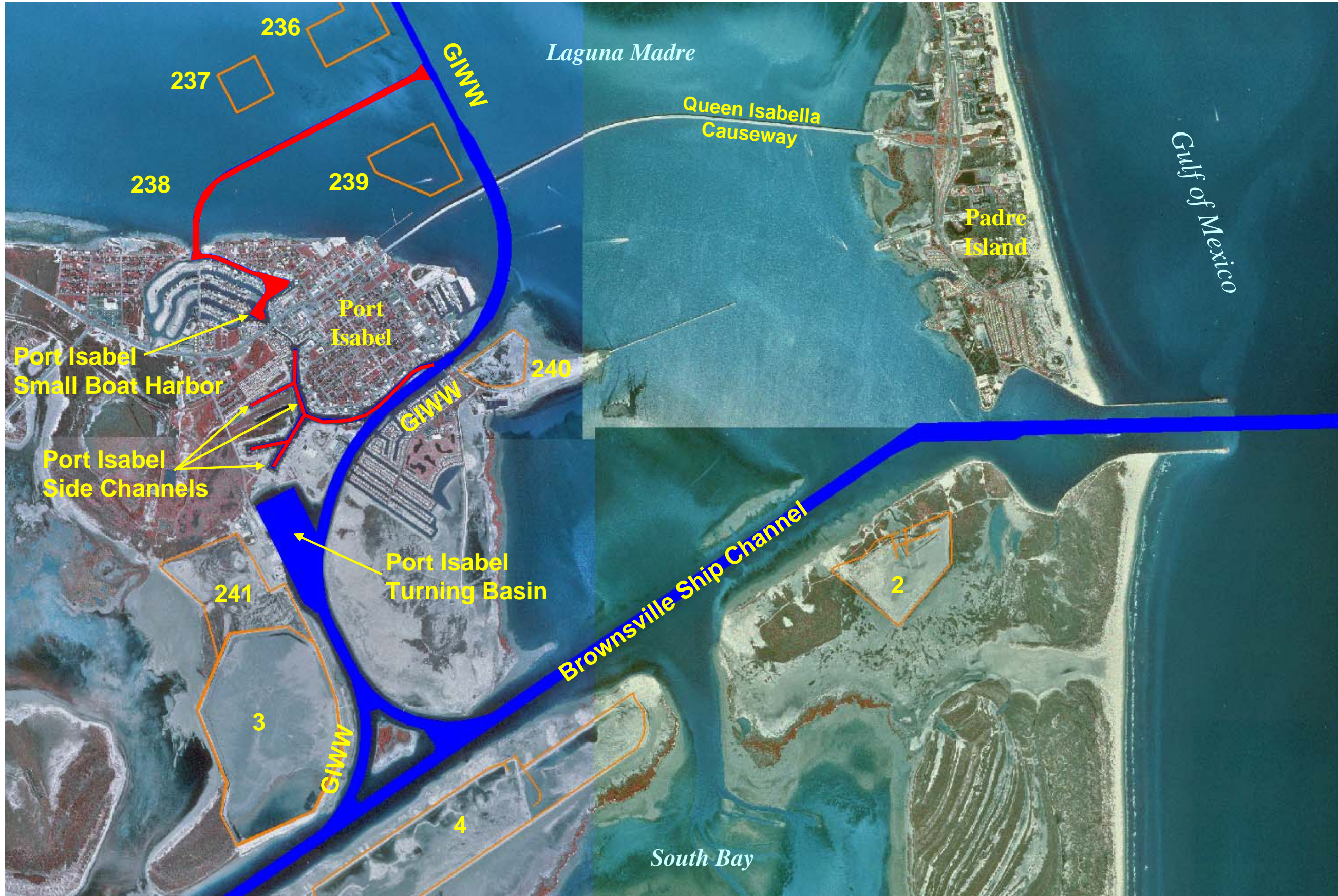


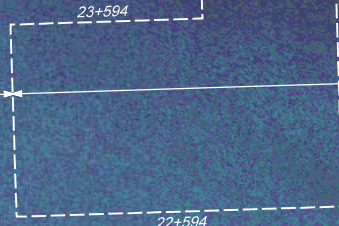
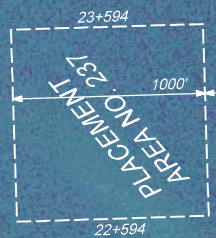


US Army Corps  
of Engineers®  
Galveston District

# GIWW Tributaries

## Port Isabel Small Boat Harbor & Side Channels

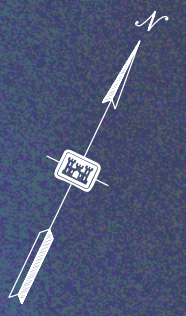




PLACEMENT AREA NO. 238

PLACEMENT AREA NO. 239

PLACEMENT AREA 240



X=2,421,783.56  
Y=146,088.61

X=1,408,940.88  
Y=16,550,388.84

X=2,422,916.64  
Y=146,088.61

X=1,416,302.05  
Y=16,549,000.00

P.I. STA. 18+491.56  
R=20,390.08'  
Δ=23.23°  
K=1,000.00'

P.C. STA. 12+389.75

P.T. STA. 18+315.76

Transition  
19+400

Transition  
19+400



PLACEMENT AREA NO. 4

EXISTING SPILLWAY  
EXIST. CAMP. PIPE  
SEE SPECIFICATIONS

200' OF LEVEL  
EXISTING PIPE  
TO BE REPAIRED

EXISTING LEVEL

EXISTING EFFLUENT DITCH  
EXISTING SPILLWAY  
SEE SPECIFICATIONS

PLACEMENT AREA NO. 3

PLACEMENT AREA NO. 241

WEST WYE

EAST WYE

21+000  
20+000  
19+000  
18+000  
17+000  
16+000  
15+400  
15+275  
15+000  
14+000  
13+000  
12+000  
11+000

P.C. STA. 0+00.00

P.C. STA. 13+250.00

P.T. STA. 30+04.35  
L=300.00  
X=171.17  
Y=147.16

P.T. STA. 17+809.51

GIWW P.C. STA. 6+858.00 F.I.W.D. = 3+903.23 BK

P.T. STA. 10+70.26  
L=1009.35  
R=3340.47  
T=121.29  
L=2342.00

P.T. STA. 10+585.00  
L=3925.25  
R=4892.33  
T=1785.09  
L=3428.14

P.C. STA. 8+789.19

N26°59'32.17"W

750'

750'

22+178.90

22+178.90

22+178.90

22+178.90

K=2421.88

L=16108.95

X=16550.388.88

Y=16550.388.88

K=1403.940.88

L=16108.95

X=16550.388.88

Y=16550.388.88

K=2421.88

L=16108.95

X=16550.388.88

Y=16550.388.88



PLAN

SCALE IN FEET

GIWW 144