

# CORPUS CHRISTI SHIP CHANNEL AND FREEPORT HARBOR IMPROVEMENT PROJECTS

Carlos Tate  
Project Manager  
SWD/Galveston District/Project Management  
Date: 15 October 2020



US Army Corps  
of Engineers®



# Corpus Christi Ship Channel



LaQuinta Ship Channel

Jewel Fulton Canal

Corpus Christi Ship Channel

Rincon Canal





# CORPUS CHRISTI CHANNEL IMPROVEMENT PLANNED PROJECTS (FY21)



### CCSC- CIP- Entrance Channel Reach-Dredging Only

Award Date	Dec-19
Quantity, CY	~6.32 MCY
Completion,	Mar-20
Scope of the deepening (from X depth to Y depth)	Existing: -49 MLLW / Auth.: -56 MLLW
Number of planned contracts	Main Channel CT#1
Current schedule for each contract	365-days
A brief description of each contract (dredging quantities and associated placement areas).	OWPA Offshore Open-water Placement

### CCSC- CIP- Lower Bay Reach- Dredging, BUS & DMPA

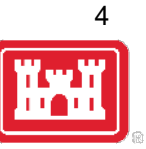
Award Date	Apr-20
Quantity, CY	~11.0 MCY
Completion,	Oct-22 (Tentative)
Scope of the deepening (from X depth to Y depth)	Existing: -47 MLLW / Auth.: -54 MLLW
Number of planned contracts	Main Channel CT#2
Current schedule for each contract	562-days (Base)
A brief description of each contract (dredging quantities and associated placement areas).	Construction of BU Sites CQ & I and DMPA #6; Pipeline removals

### CCSC- CIP- Upper Bay Reach-Dredging, Barge Lanes

Award Date	FY2021 (May/Jun)
Quantity, CY	~13.0 MCY
Completion,	TBD
Scope of the deepening (from X depth to Y depth)	Existing: -47 MLLW / Auth.: -54 MLLW
Number of planned contracts	Main Channel CT#3
Current schedule for each contract	(** 687-Days)
A brief description of each contract (dredging quantities and associated placement areas).	Construct 14x200-wide barge lanes; OWPA; and Pipeline removals; Raise DMPA Dikes

### CCSC- CIP- Inner Harbor Reach-Dredging, DMPA's

Award Date	FY2022 (Jan/Feb)
Quantity, CY	TBD (**Tentative ~4-6 MCY)
Completion,	TBD
Scope of the deepening (from X depth to Y depth)	Existing: -47 MLLW / Auth.: -54 MLLW
Number of planned contracts	Main Channel CT#4
Current schedule for each contract	TBD
A brief description of each contract (dredging quantities and associated placement areas).	Dredging; Raise DMPA's Suntide & Tule Lake



# Freeport Harbor

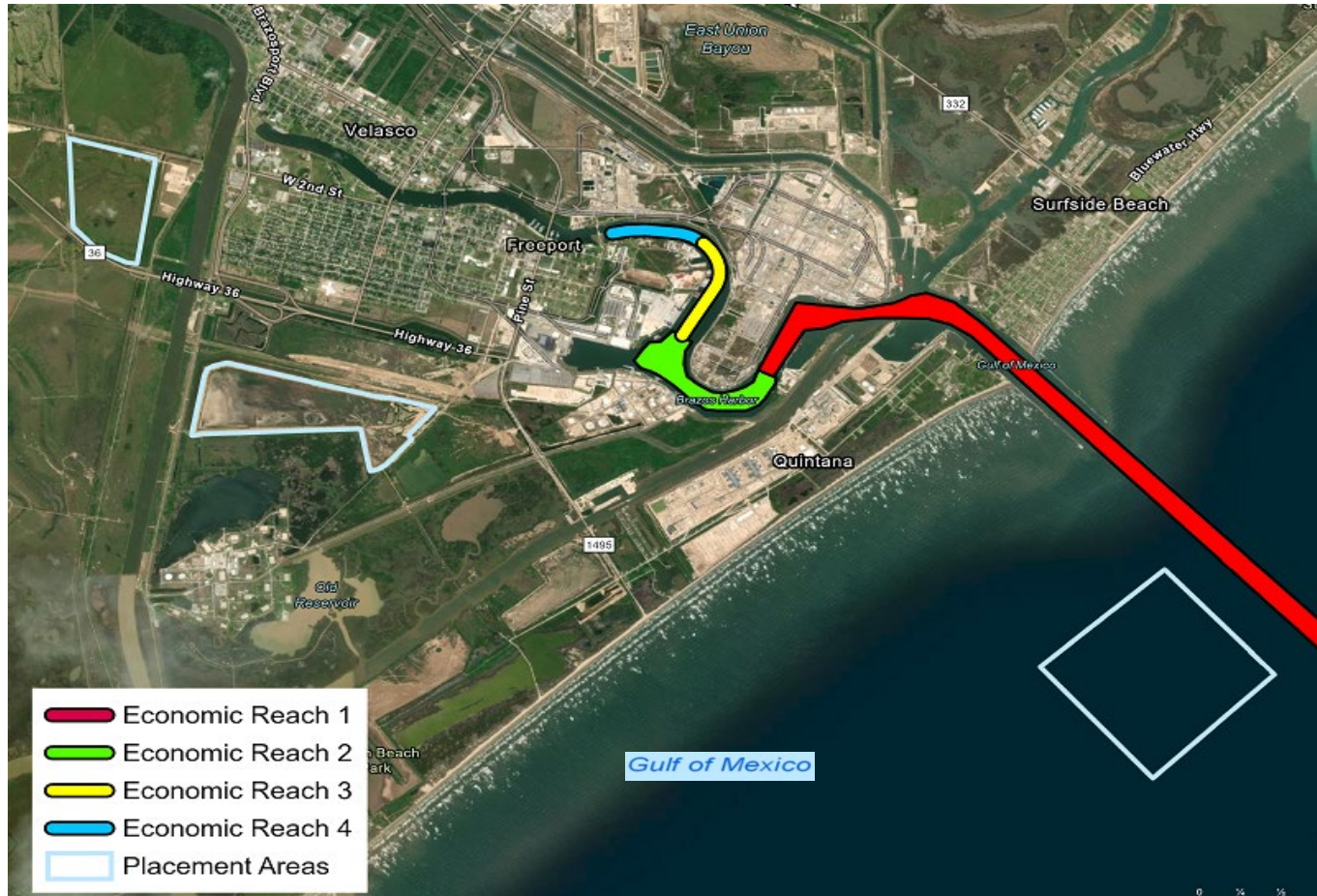
Brazos Harbor

Freeport

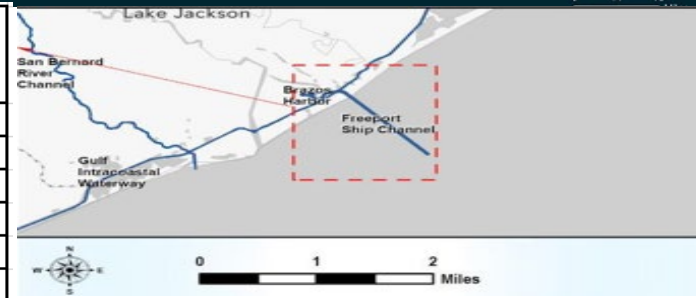




# PORT FREEPORT PLANNED PROJECTS (FY21)



Auth. Depth (MLLW)	Contract Name	Award / Construction Start Date
56'/58'	Reach 1	Entr. Offshore
56'		Entr. Jetty
51'	Reach 2	Dow Thumb/GRR
51'	Reach 3	Lower Stauffer
26'	Reach 4	Upper Stauffer
New DMPA	PA#8	Upland



Construction Contract	Est. Qty. MCY
<b>Contract Reach #1</b>	<b>~ 12.1</b>
Subtotal going offshore: ~10.8 MCY	
Entrance Future: 795,000 CY	<-----
Outer Bar: 7,980,628 CY	<-----
Jetty Reach: 1,979,697 CY	<-----
Subtotal going to PA 8: ~1.3 MCY	
Lower Turning Basin: 101,945 CY	<-----
Channel to Brazosport & New 1,200 -ft Brazosport Turning Basin: 1,072,777 CY	<-----
Channel from Brazosport Turning Basin: 160,117 CY	<-----
<b>Contract Reach #2 Dow Thumb w/GRR</b>	<b>~ 2.5</b>
<b>Contract Reach #3 Lower Stauffer</b>	<b>~1.4</b>
<b>Contract Reach #4 Upper Stauffer</b>	<b>~ 1.7</b>