

# Sabine-Neches Waterway Expansion



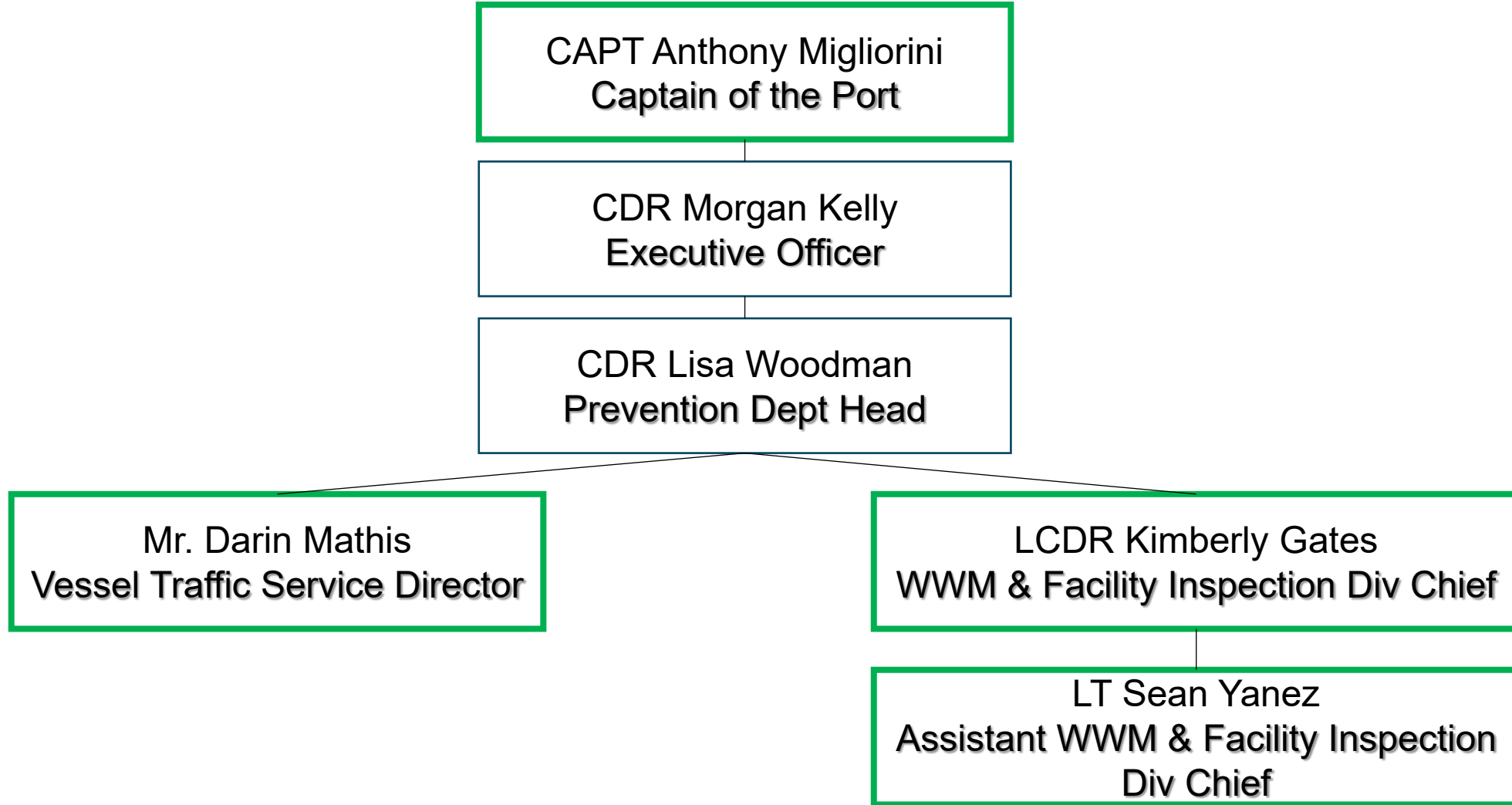
LCDR Kimberly Gates

Division Chief, Waterways Management and Facility Inspection

Marine Safety Unit Port Arthur



# Marine Safety Unit Port Arthur





# Agenda

- The Sabine-Neches Waterway
- Waterfront Facility Construction & Expansion
- Traffic Growth
- Deepening Project Coordination





# The Sabine-Neches Waterway

- 57 miles of deep draft channel
- Over 90 CG regulated waterfront facilities
- Incorporates ~15 miles of GIWW

## Statistics:

- 3<sup>rd</sup> Busiest Waterway by Cargo Volume
- #1 LNG Exporter in Nation
- #1 Refiner of Jet Fuel in Nation
- #1 Strategic Military Outload Port





# Waterfront Facility Construction & Expansion

- 3 New/Expanding LNG Facilities
- Since 2023, 4 New LHG Waterway Suitability Assessments Received
- LNG/LHG traffic projected to increase by ~1700 vessels/year by 2027



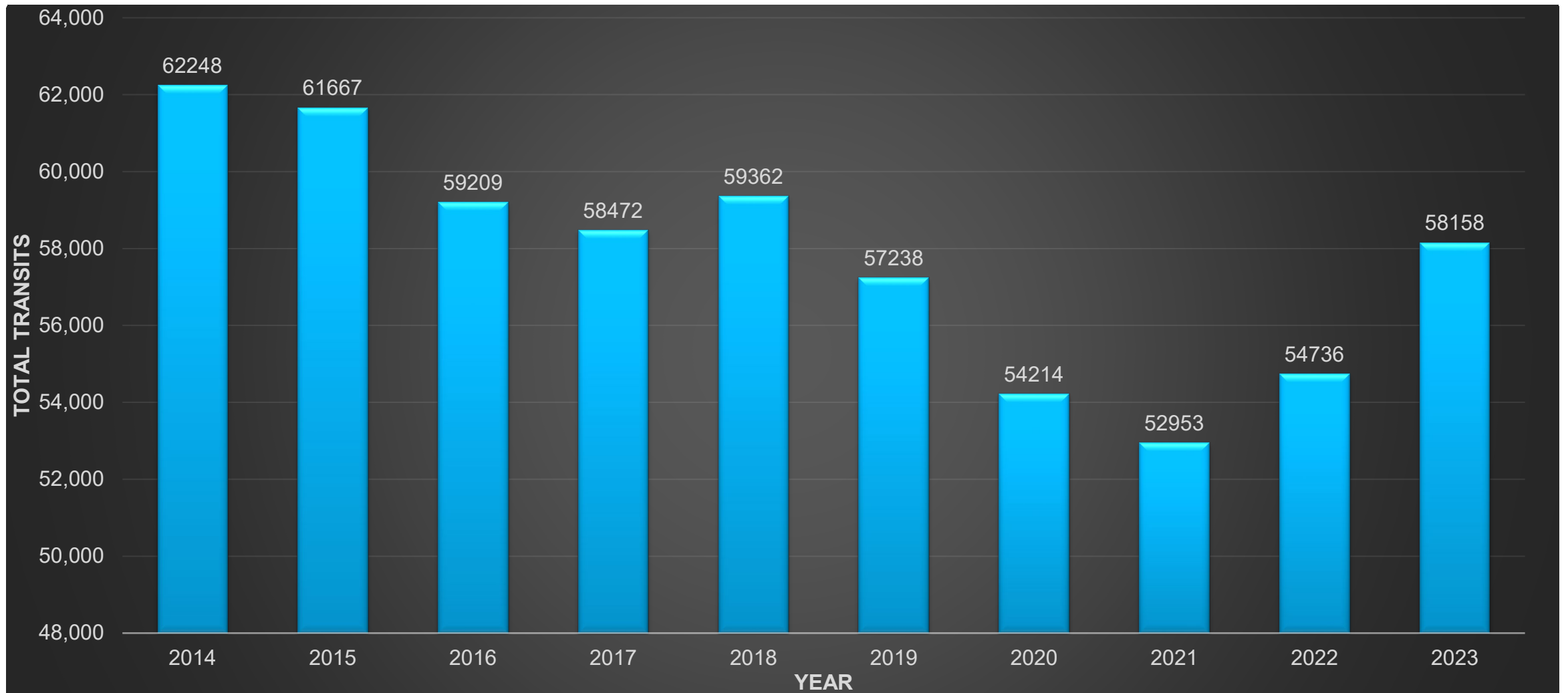


# Vessel Traffic Service (VTS) Transits

	<u>2022</u>	<u>2023</u>	<u>% Change</u>
Freighter	1048	959	- 8.5 %
Tanker	3644	4004	+ 9.9 %
Gas	1830	2106	+ 15.1 %
Tug	1837	2367	+ 28.9 %
Inland Tow	45,951	48,035	+ 4.5 %
Other	426	687	+ 57.5 %
<b>Total</b>	<b>54,736</b>	<b>58,158</b>	<b>+ 6.25%</b>



# VTS Total Transits (2014-2023)





# Deepening Project Coordination







# Questions

