

# MOUTH OF COLORADO AND SARGENT BEACH

*Mouth of Colorado River  
Maintenance Dredging of Entrance  
/ Jetty Channel and Sediment  
Impoundment Basin with Sargent  
Beach Beneficial Use  
Breakwaters, Groin and Beach  
Placement*

Seth Jones, Ops Manager GIWW  
Rhonda Gregg Hirsch, Ops Manager-BU

Annual Dredging Meeting  
05 November 2024

"The views, opinions and findings contained in this report are those of the authors(s) and should not be construed as an official Department of the Army position, policy or decision, unless so designated by other official documentation."



U.S. ARMY

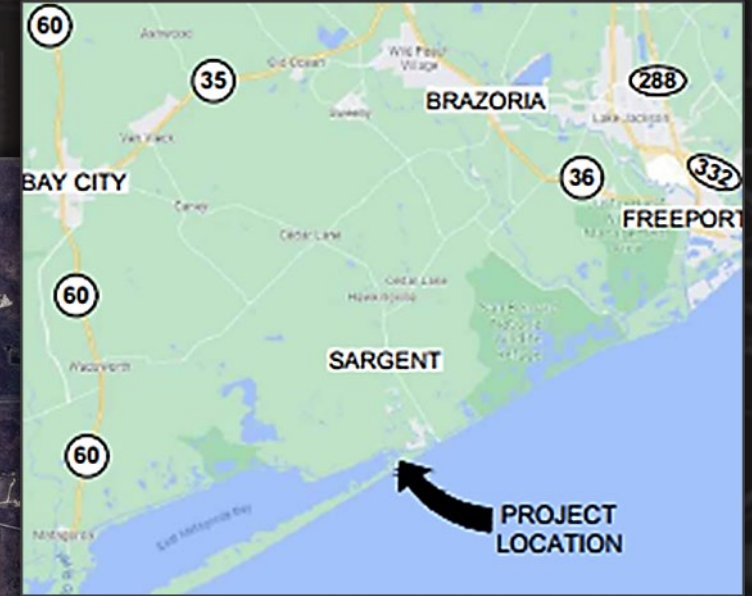


US Army Corps  
of Engineers®





# LOCATION



Sargent, TX  
Matagorda County  
20 miles southeast of Freeport, TX

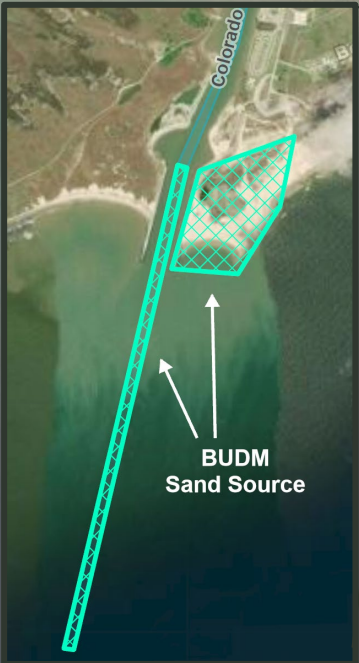
Mitchell's Cut to the west  
Cedar Lakes Pass to the east

Partnership with TXGLO for Construction Phase



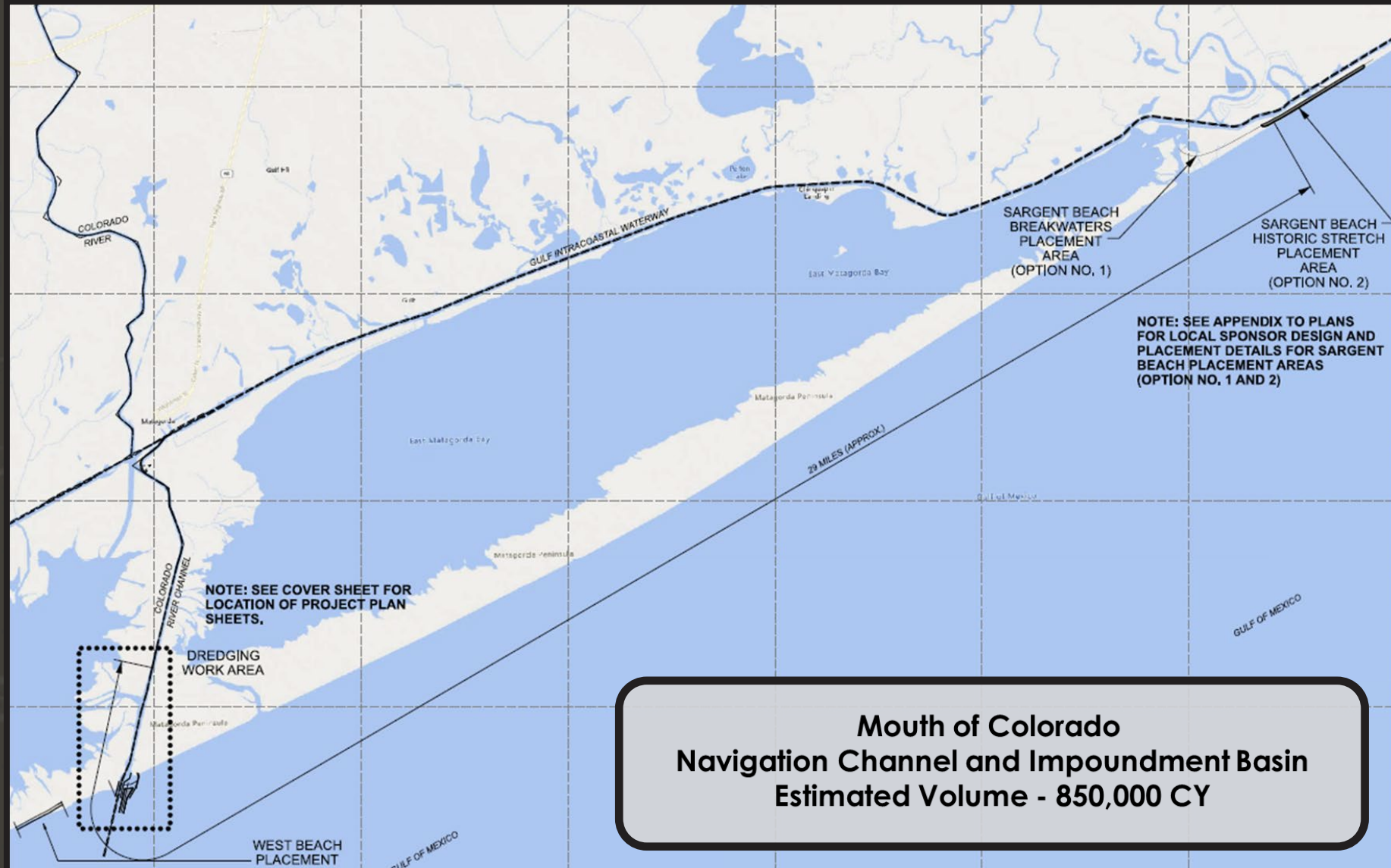
# U.S. Army Corps of Engineers - Galveston District

## Mouth of the Colorado and Sargent Beach



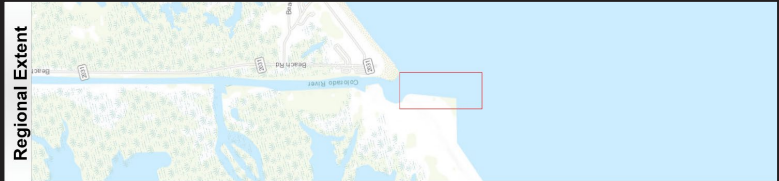
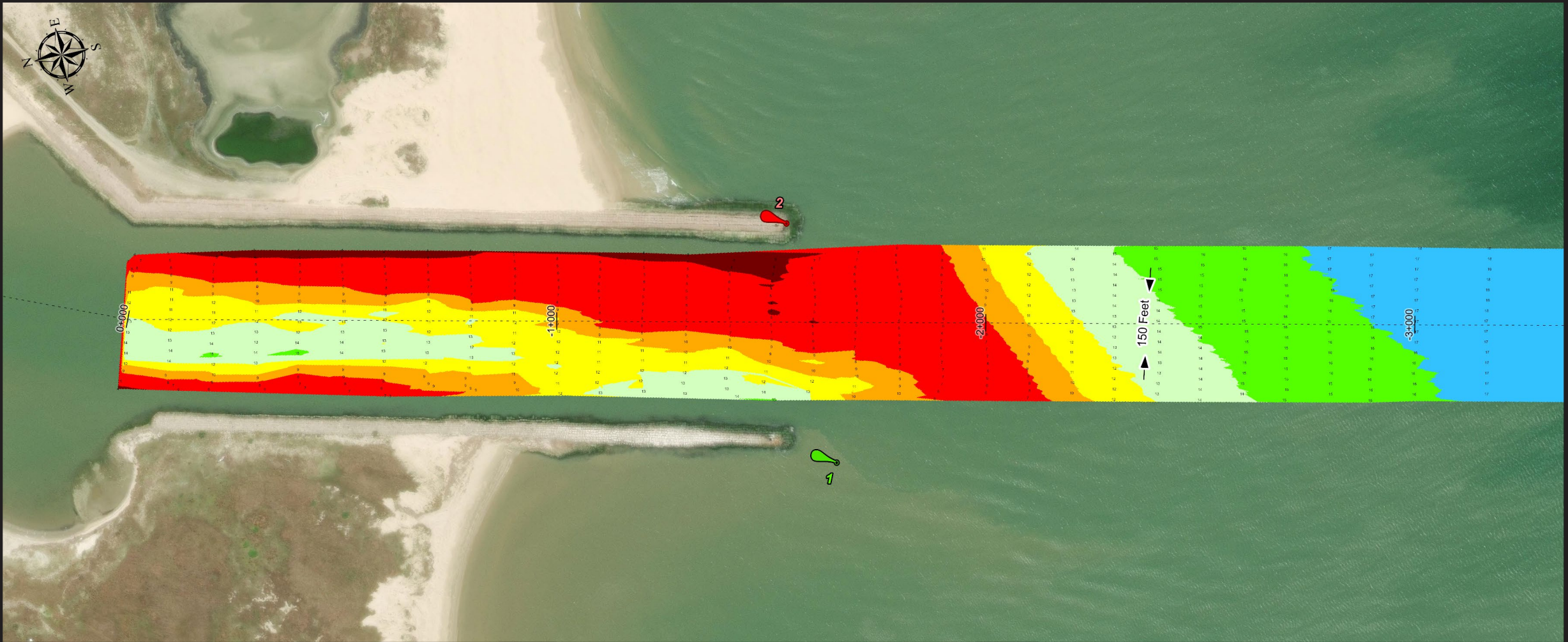


# USACE FY25 MOUTH OF COLORADO JETTY & ENTRANCE CHANNELS AND SEDIMENT DETENTION BASIN MAINTENANCE DREDGING WITH OPTIONAL BENEFICIAL USE PLACEMENT





# USACE BENEFICIAL USE OF DREDGED MATERIAL

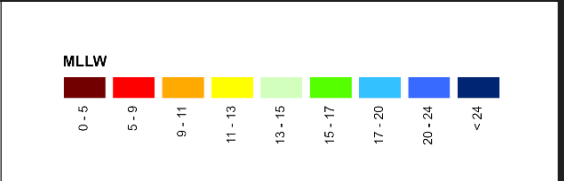


**Channel Features**

- Channel Center Line
- Channel Toe
- ↔ Channel Dimensions

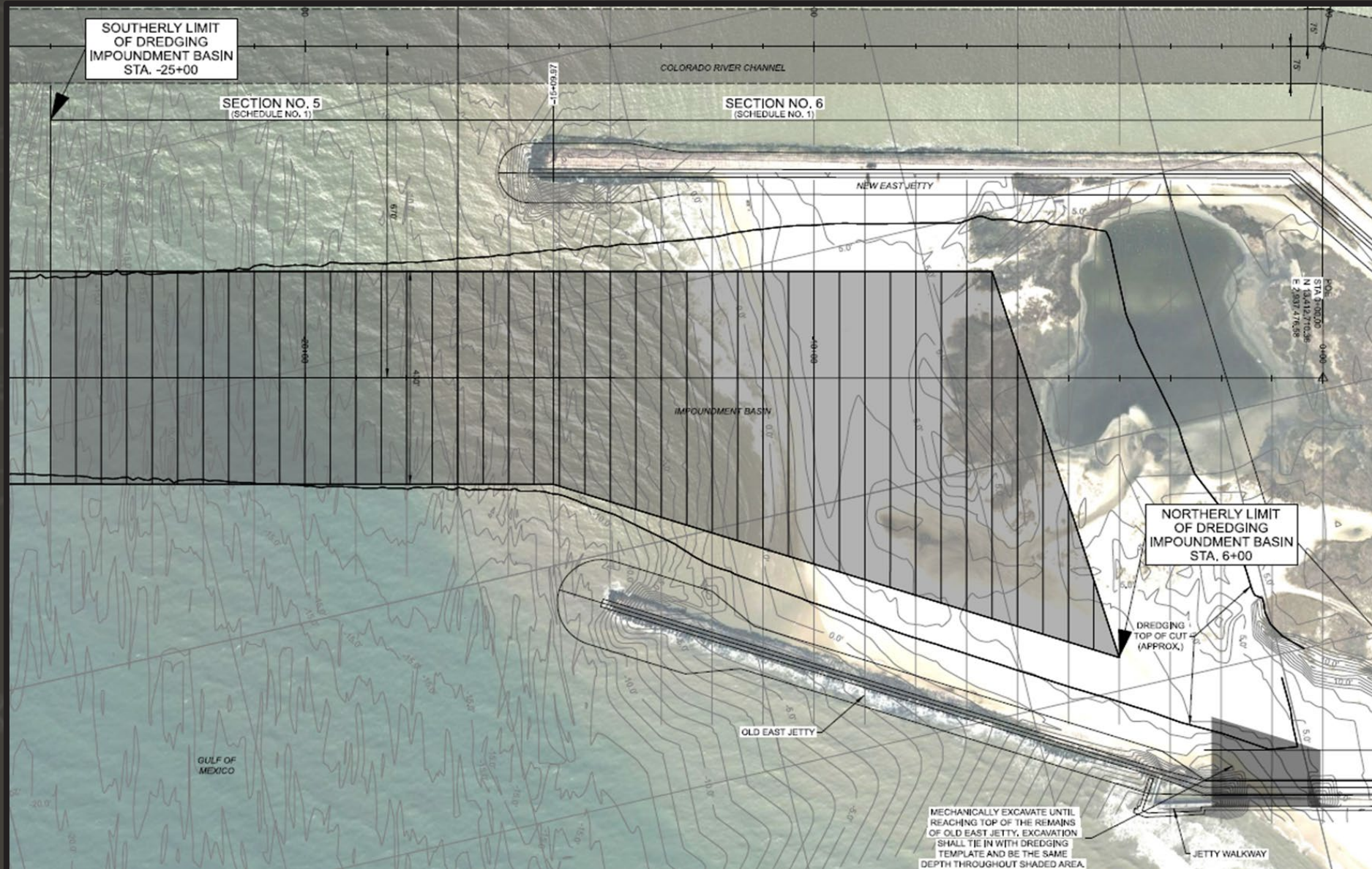
**Aids to Navigation**

- Green Side Aids
- Red Side Aids
- Lights





# USACE BENEFICIAL USE OF DREDGED MATERIAL





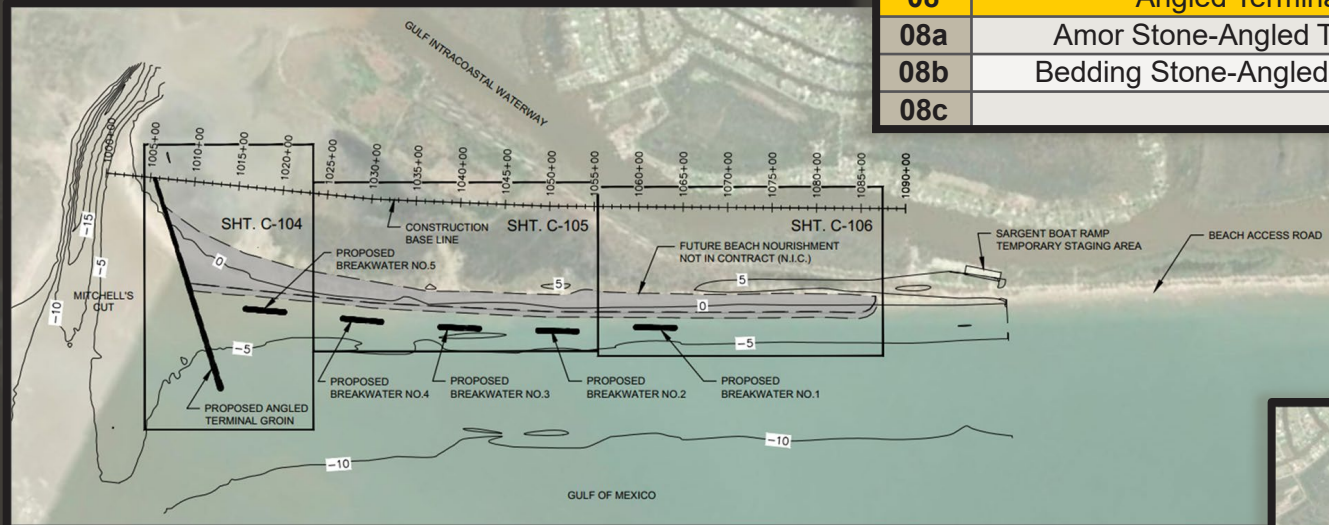
# LOCATIONS FOR BENEFICIAL USE OPTIONS 1 & 2





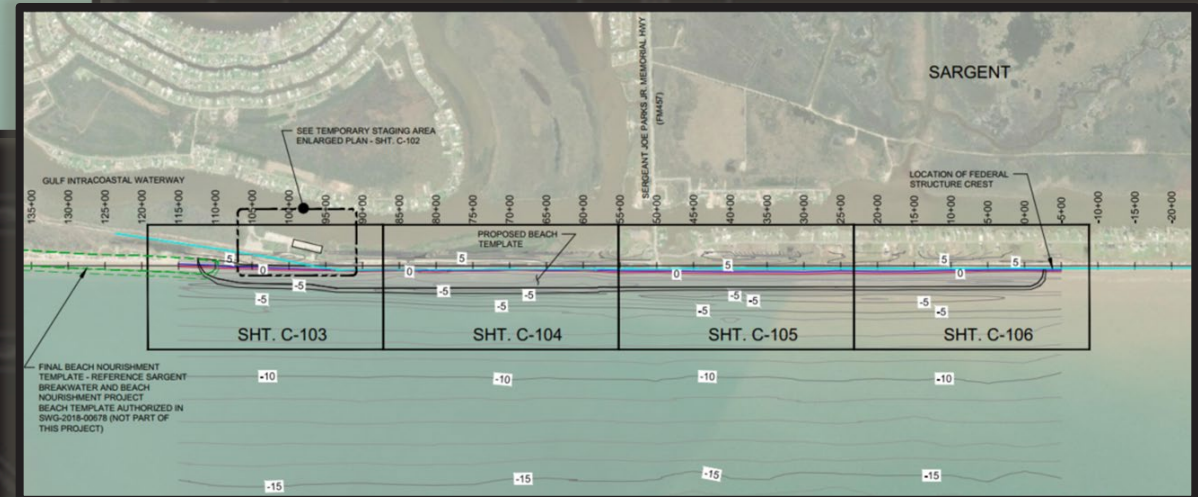
# PROJECT STRUCTURAL ELEMENTS

Preliminary Summary of Structure Material Quantities					
Item	Description	Unit of Measure	Approx. Quantities	Unit of Measure	Approx. Quantities
<b>07</b>	<b>Breakwaters</b>	-	-	-	-
07a	Amor Stone- Breakwaters	CY	29,748	TON	66,264
07b	Bedding Stone-Breakwaters	CY	8,340	TON	18,578
07c	Woven Geotextile Fabric-Breakwaters	SY	23,035	-	-
<b>08</b>	<b>Angled Terminal Groin</b>	-	-	-	-
08a	Amor Stone-Angled Terminal Groin	CY	30,331	TON	67,563
08b	Bedding Stone-Angled Terminal Groin	CY	8,341	TON	18,580
08c		SY	23,055	-	-



- 1) The amor stone quantities include a 10% reduction to account for voids.
- 2) The equivalent tonnage (TON) of armor stone and bedding stone was determined using a stone unit weight of 165 pcf per section 35 31 19 STONE.
- 3) Design updates will include geo-composite, marine mattress, and quantity updates.

- A Single, Angled Terminal Groin
- 5 Offshore Segmented Breakwaters
- Beach nourishment in vicinity of structures
- BUDM from Mouth of Colorado River
- Project is fully funded





# FOR CONTRACT INFORMATION AND MILESTONES CHECK USACE GALVESTON DISTRICT OPERATIONS



## Contract Milestone Schedule

Issue Solicitation	4/15/2025
Bid Opening	5/15/2025
Award	6/10/2025
Start	7/01/2025

**Seth Jones, Operations Manager**  
U.S. Army Corps of Engineers  
SWG Operations Division  
Navigation Branch

[Seth.W.Jones@usace.army.mil](mailto:Seth.W.Jones@usace.army.mil)  
409-502-7396

**Rhonda Gregg Hirsch**  
Operations Manager, Beneficial Use  
U.S. Army Corps of Engineers  
SWG Operations Division  
Navigation Branch

[Rhonda.R.GreggHirsch@usace.army.mil](mailto:Rhonda.R.GreggHirsch@usace.army.mil)



US Army Corps  
of Engineers®

U.S. ARMY