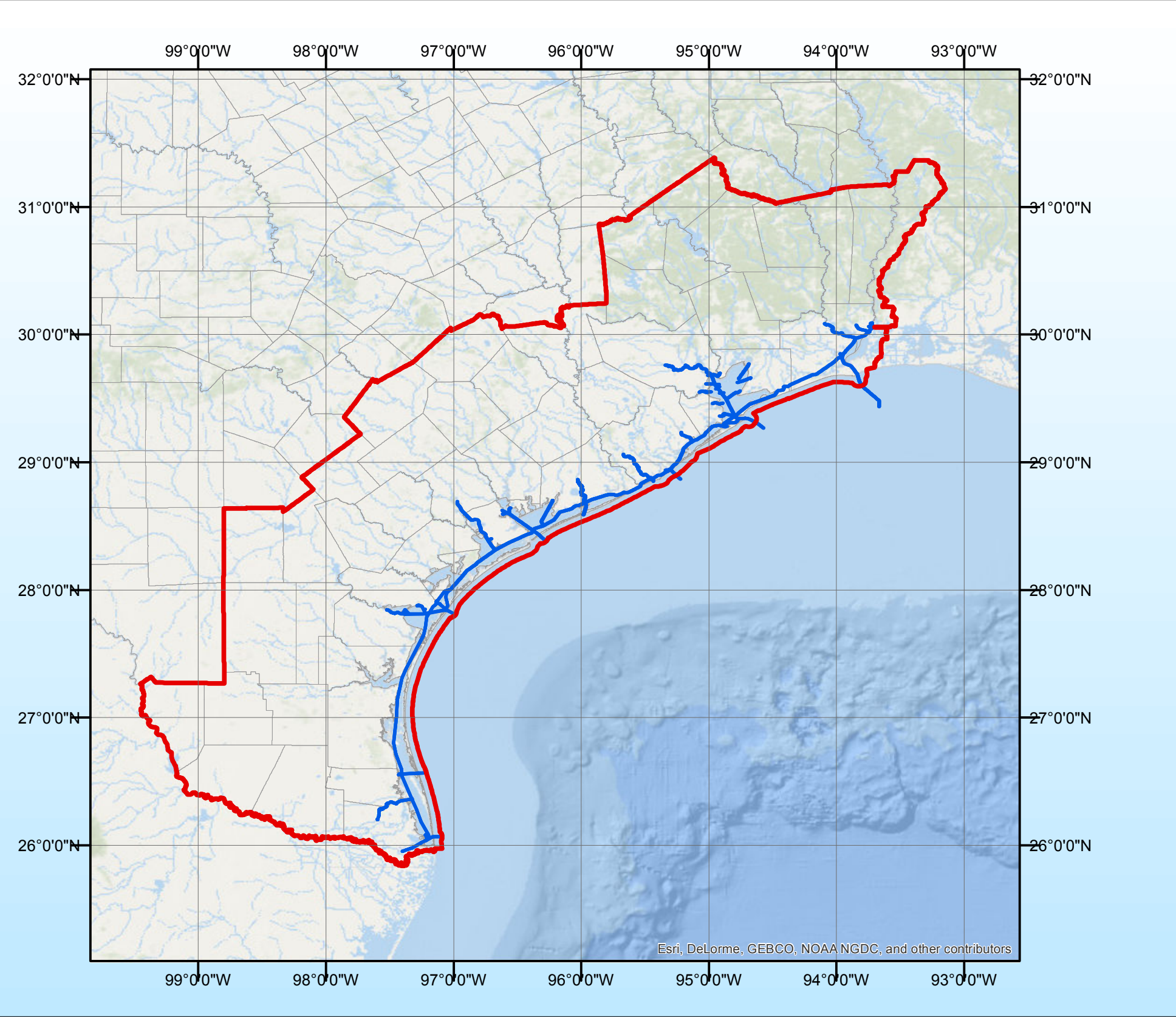


STATUS OF CONTRACT DREDGING EQUIPMENT - GALVESTON DISTRICT



Print Date: 9/28/2017
Time: 11:50:44 AM

This product is reproduced from geospatial information prepared by the U.S. Army Corps of Engineers. GIS data and product accuracy may vary. Data may be developed from sources of differing accuracy, accurate only at certain scales, based on modeling or interpretation, incomplete while being created or revised, etc. Using GIS products for purposes other than those for which they were created may yield inaccurate or misleading results. The Corps of Engineers reserves the right to correct, update, modify, or replace GIS products without notification.

Satellite Imagery: Used in Galveston insets was acquired January 7, 2017. Images are parallaxed 0.5 meter pixel, 4-band (RGBN), controlled, orthorectified satellite images. The new WorldView-3 image was collected by DigitalGlobe and post-processed by USACE Wilmington District GIS Staff.

 CESWG Contract Dredges

