

# U.S. Army Corps of Engineers: Cedar Bayou, TX



## Cedar Bayou, TX Operation and Maintenance

U.S. ARMY CORPS OF ENGINEERS

BUILDING STRONG®

FACT SHEET as of April 01, 2019

**AUTHORIZATION:** Senate Doc 107, 71st Congress, Second Session

**TYPE OF PROJECT:** Navigation

**PROJECT PHASE:** Operation and Maintenance



Cedar Bayou Channel Outlet

**CONGRESSIONAL INTEREST:** Senators Cornyn and Cruz (TX), Representatives Crenshaw (TX-2), Weber (TX-14), and Babin (TX-36)

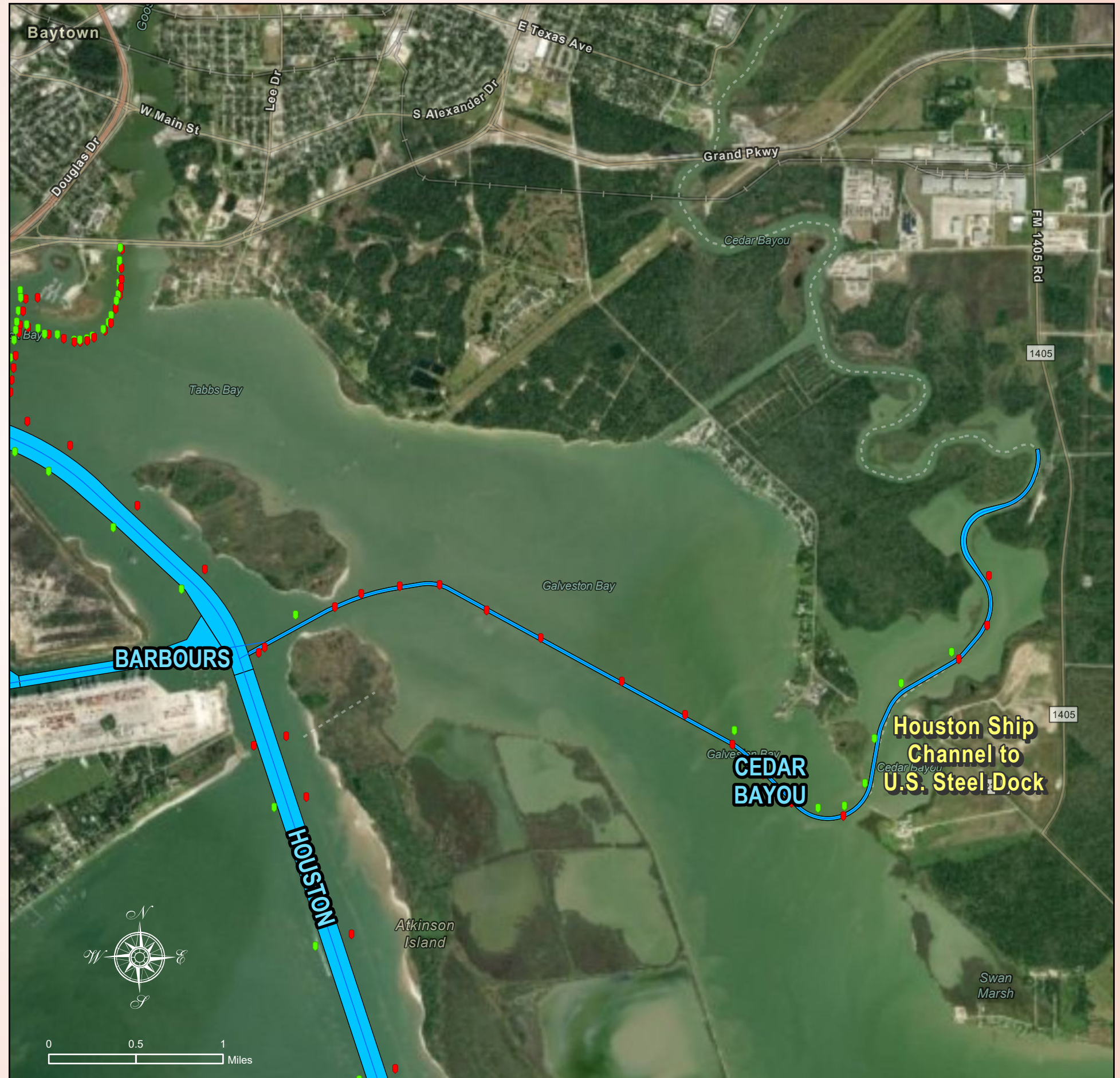
**NON-FEDERAL SPONSOR:** Chambers-Liberty Counties Navigation District

**BACKGROUND:** The Cedar Bayou shallow draft navigation project consists of a 11-foot deep by 100-foot wide by approximately 3 mile long channel; extending from the Houston Ship Channel near Mile 25; eastward across Galveston Bay; to a point 3 miles upstream Cedar Bayou.

The channel supports barge traffic to facilities owned by Koppel Steel, Jindal United Steel and Bayer Corporation.

**STATUS:** Received \$3,500,000 in supplemental funds for project management and maintenance dredging of Cedar Bayou Channel to project depth. Contract was awarded in FY18 and maintenance dredging was completed in February 2019.

**ISSUES:** Inability perform routine maintenance dredging will produce shoaling to critical depths of 7 feet, diminishing level of service, creating navigation hazards, and causing draft restrictions, possible channel closures, loss of commerce, and increased maintenance costs.



The USACE Galveston District plays a key role in America's well-being by keeping waterways open for navigation and commerce. The Galveston District is directly responsible for monitoring more than 1,000 miles of channel. Dredges are constantly at work keeping vital marine arteries open for waterborne traffic carrying cargo ranging from crude oil to coffee. Other priorities include construction of jetties or breakwaters to protect harbor and inlet entrances and the locks along the Gulf Intracoastal Waterway at the crossing of the Brazos and Colorado rivers.



- Aids to Navigation**
- GREEN
  - RED
  - ★ YELLOW
- Texas Ports**
- Texas Ports
  - CESWG District Offices
  - Navigation Channel

Source: Esri, DigitalGlobe, GeoEye, Earthstar Geographics, CNES/Airbus DS, USDA, USGS,