

U.S. Army Corps of Engineers: Texas City Ship Channel, TX



Texas City Ship Channel, TX Operation & Maintenance

U.S. ARMY CORPS OF ENGINEERS

BUILDING STRONG®

FACT SHEET as of April 01, 2019

AUTHORIZATION: House Document 427, 86th Congress, Second Session

TYPE OF PROJECT: Navigation

PROJECT PHASE: Operation & Maintenance



Texas City Port Facility

CONGRESSIONAL INTEREST: Senators Cornyn and Cruz (TX), Representatives Weber (TX-14), and Olson (TX-22)

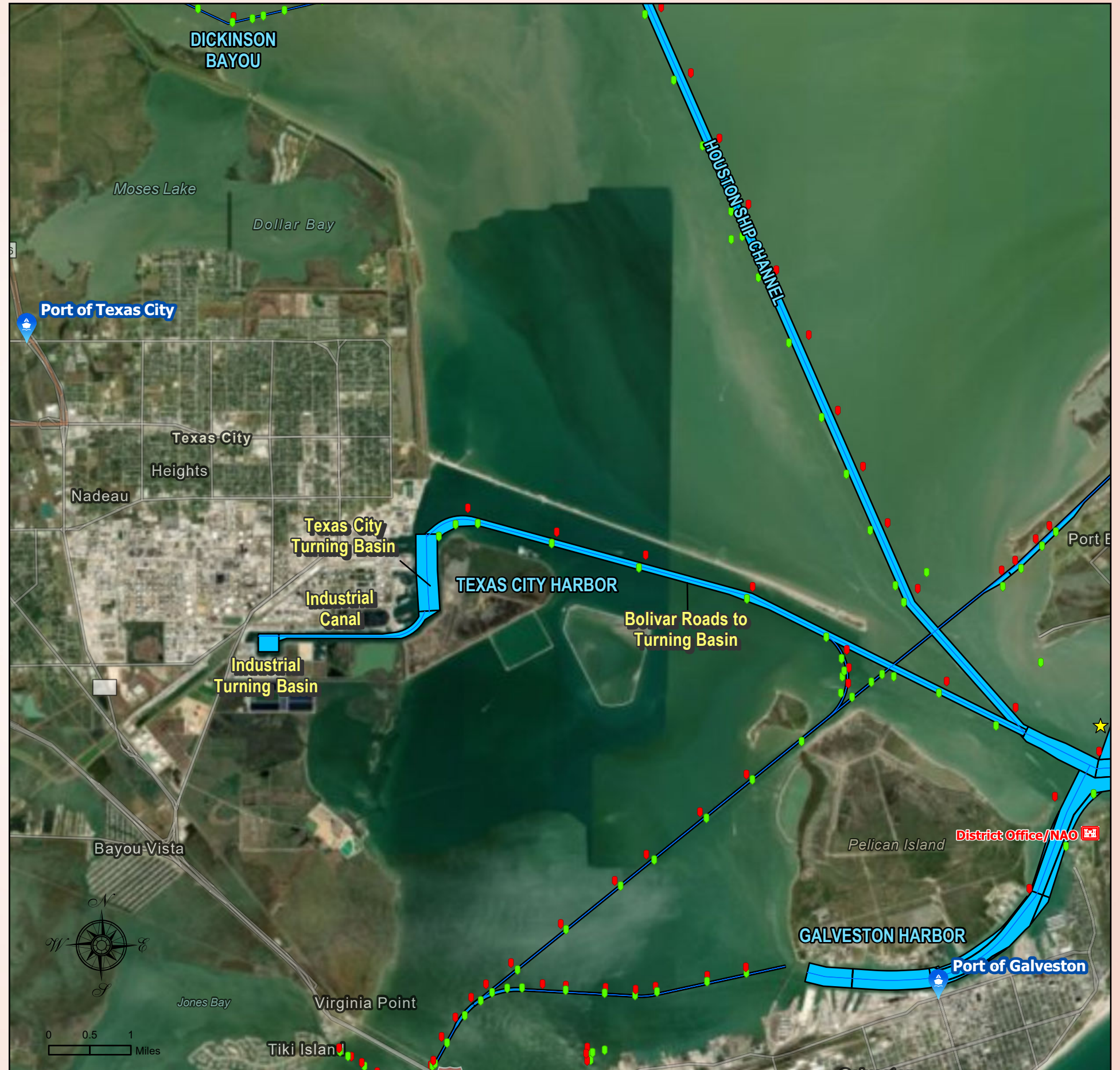
NON-FEDERAL SPONSOR: City of Texas City

BACKGROUND: The Texas City Ship Channel (TCSC) deep draft navigation project consists of a 46-foot by 400-foot wide by approximately 9.4 mile long channel; extending from the intersection of Galveston Harbor and the Houston Ship Channel, to a turning basin and Industrial Canal to the facilities at the Port of Texas City.

The Port of Texas City is ranked #18 in the nation with respect to commercial tonnage (37.8 million tons total in 2017). In 2017, the Texas City Ship Channel had approximately 1,150 deep-water vessel arrivals; or 93 per month. The major commodities shipped through the Port of Texas City are petroleum and petroleum related products; all liquid with the exception of Petroleum Coke.

The Port of Texas City has three refineries with a refining capacity of approximately 780,000 barrels per day. The remaining crude is transported to the refineries at Houston through an intricate network of pipes. The Port of Texas City pipelines are also linked to the U.S. Strategic Petroleum Reserves.

STATUS: FY 2018 activities included performing project condition surveys, project management, real estate functions, and TCSC erosion repairs due to Hurricane Harvey.



The USACE Galveston District plays a key role in America's well-being by keeping waterways open for navigation and commerce. The Galveston District is directly responsible for monitoring more than 1,000 miles of channel. Dredges are constantly at work keeping vital marine arteries open for waterborne traffic carrying cargo ranging from crude oil to coffee. Other priorities include construction of jetties or breakwaters to protect harbor and inlet entrances and the locks along the Gulf Intracoastal Waterway at the crossing of the Brazos and Colorado rivers.



Aids to Navigation

- GREEN
- RED
- ★ YELLOW
- 📍 Texas Ports
- 🏢 CESWG District Offices
- 🛤️ Navigation Channel

Source: Esri, DigitalGlobe, GeoEye, Earthstar Geographics, CNES/Airbus DS, USDA, USGS,