

Ocean Disposal Partnership –

U.S. Army Corps of Engineers and
U.S. Environmental Protection Agency

Innovation and Success

***Lisa Finn
Environmental Resource Specialist
Navigation Branch,
USACE Galveston District***

***Karen McCormick
Chief, Marine Coastal and
Analysis Section,
US EPA Region 6***

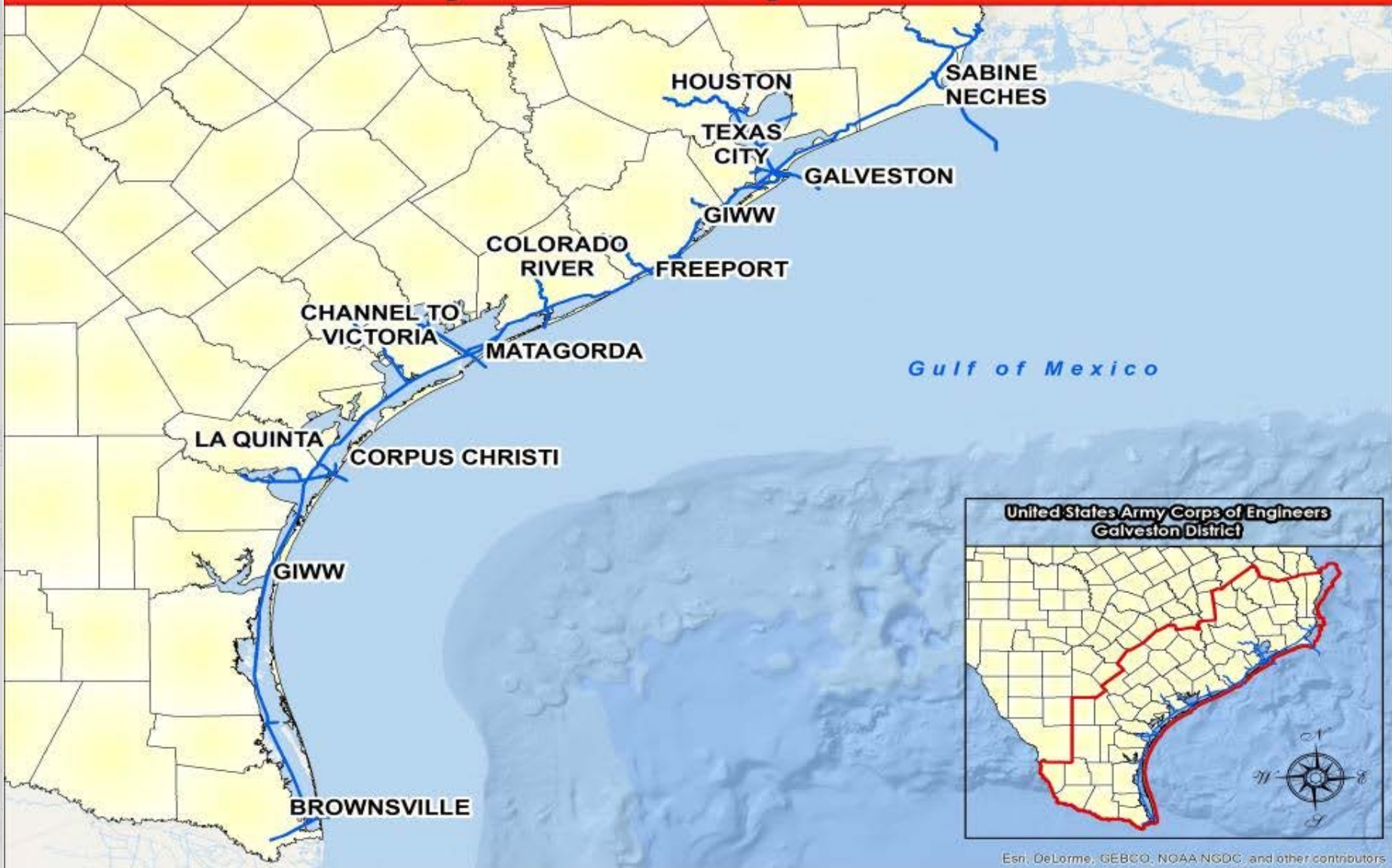
“The views, opinions and findings contained in this report are those of the author(s) and should not be construed as an official Department of the Army position, policy or decision, unless so designated by other official documentation.”



**US Army Corps
of Engineers.**



Ocean Disposal Partnership USACE and USEPA R6



Esri, DeLorme, GEBCO, NOAA NGDC, and other contributors



US Army Corps
of Engineers.



U.S. ARMY

USACE Galveston

- **Initiatives** – Federal Register update
 - Effective October 15, 2015
 - The previous wording within the 40 CFR 228.15 restricted the use of the ODMDS to only dredged material originating from specific federal channel reaches.
 - Changed to include suitable dredged material from the **greater vicinities** of the respective federal channels.
 - Provides flexibility for disposal facility management and 3rd party use



US Army Corps
of Engineers.



Galveston ODMS Site Management & Monitoring Plan (SMMP) Revision

- ▶ Jointly Developed by EPA and USACE
- ▶ Expands use of existing Galveston ODMS to include dredged material from the Galveston Bay Complex
- ▶ Cost saving measure
 - Reduce costs for bathymetry
 - Separate disposal zones
- ▶ Specifies monitoring & management requirements
- ▶ Includes commitment to provide DQM and bathymetry data
- ▶ Post disposal summary report
- ▶ First time federal use in FY17 contract



US Army Corps
of Engineers.



Ocean Disposal Partnership USACE and USEPA R6



US Army Corps of Engineers.



U.S. ARMY

Galveston Bay Complex



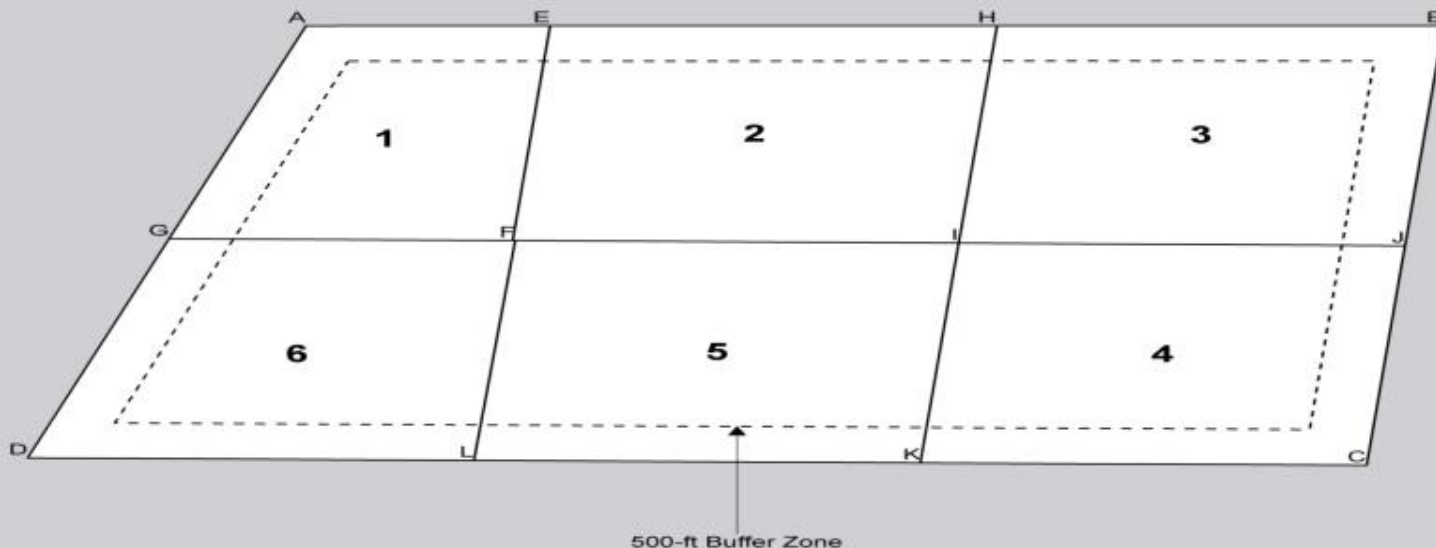
US Army Corps of Engineers.



U.S. ARMY

Ocean Disposal Partnership USACE and USEPA R6

Point	Latitude	Longitude
A	29° 18' 00.85" N	94° 39' 30.69" W
B	29° 15' 54.86" N	94° 37' 06.69" W
C	29° 14' 24.86" N	94° 38' 42.69" W
D	29° 16' 54.86" N	94° 41' 30.69" W
E	29° 17' 33.81" N	94° 38' 59.79" W
F	29° 16' 49.55" N	94° 39' 46.36" W
G	29° 17' 28.34" N	94° 40' 29.80" W
H	29° 16' 44.33" N	94° 38' 03.24" W
I	29° 15' 59.85" N	94° 38' 50.69" W
J	29° 15' 09.81" N	94° 37' 54.75" W
K	29° 15' 14.85" N	94° 39' 38.69" W
L	29° 16' 04.85" N	94° 40' 34.68" W



Galveston ODMDS Disposal Zones

0 0.25 0.5 1 Miles

Basemap: World Light Grey Canvas (ESRI, NAVTEQ)
Produced by: EPA Region 6, Dallas, TX



US Army Corps
of Engineers.



U.S. ARMY

Freeport Harbor Channel

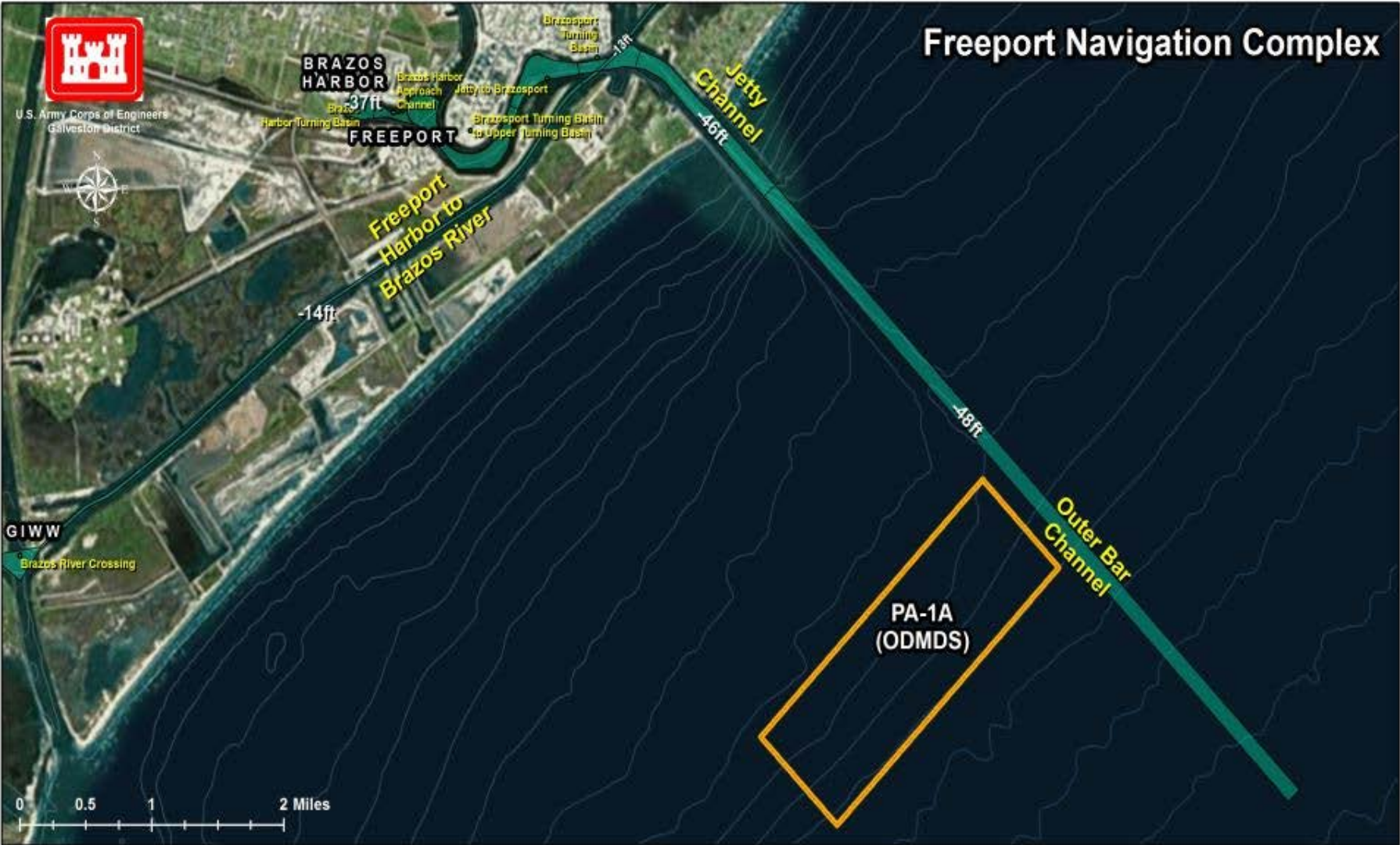
- Inside Channel material regularly placed offshore
- Longevity of upland confined sites in a critical capacity area
- Flexibility with dredge plant



US Army Corps
of Engineers.



Ocean Disposal Partnership USACE and USEPA R6



US Army Corps of Engineers.



U.S. ARMY

Sabine Neches Waterway

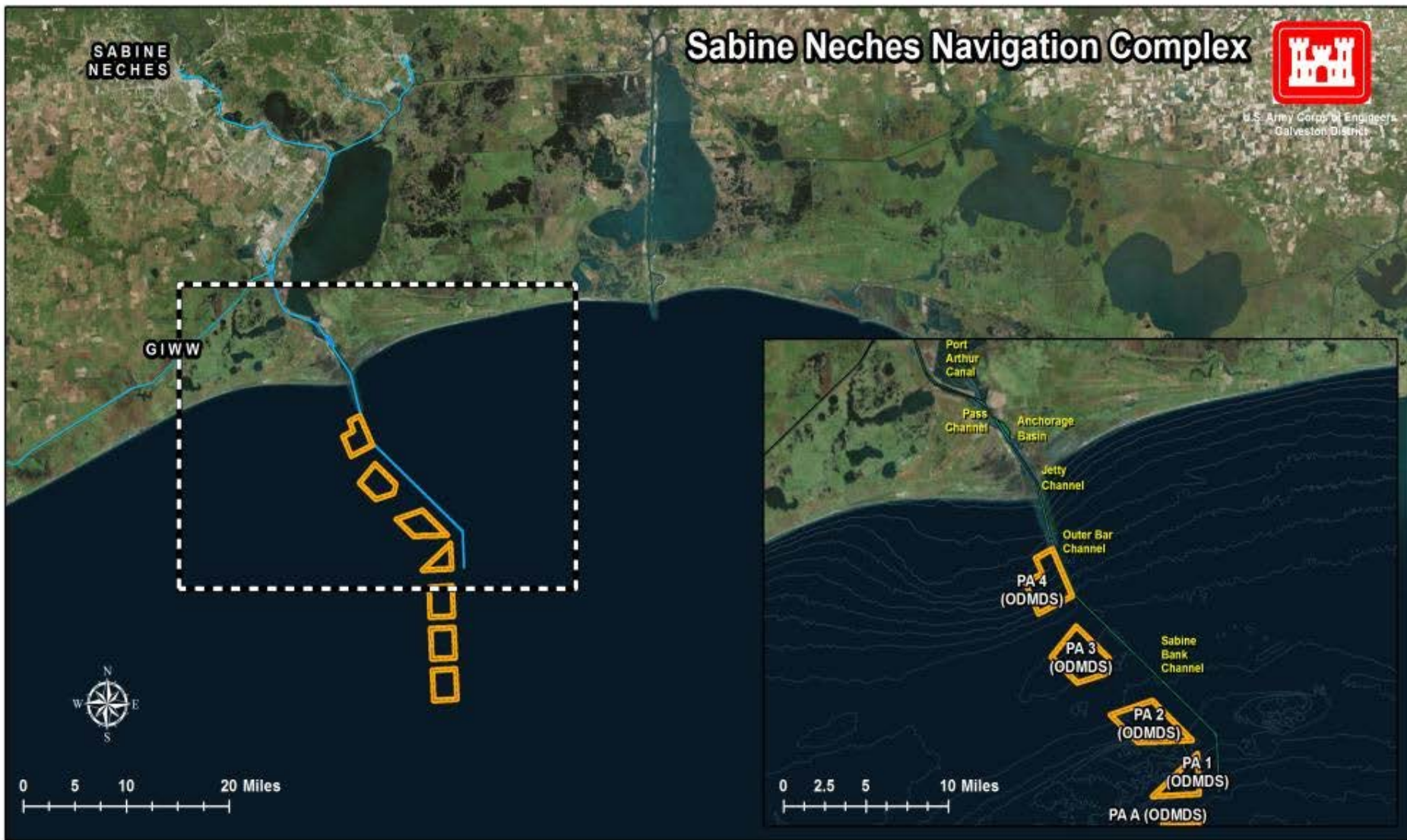
- Sabine Pass hotspot
- Increased sampling
- Flexibility with dredge plant



US Army Corps
of Engineers.



Ocean Disposal Partnership USACE and USEPA R6



US Army Corps
of Engineers.



U.S. ARMY

Brazos Island Harbor (Brownsville)

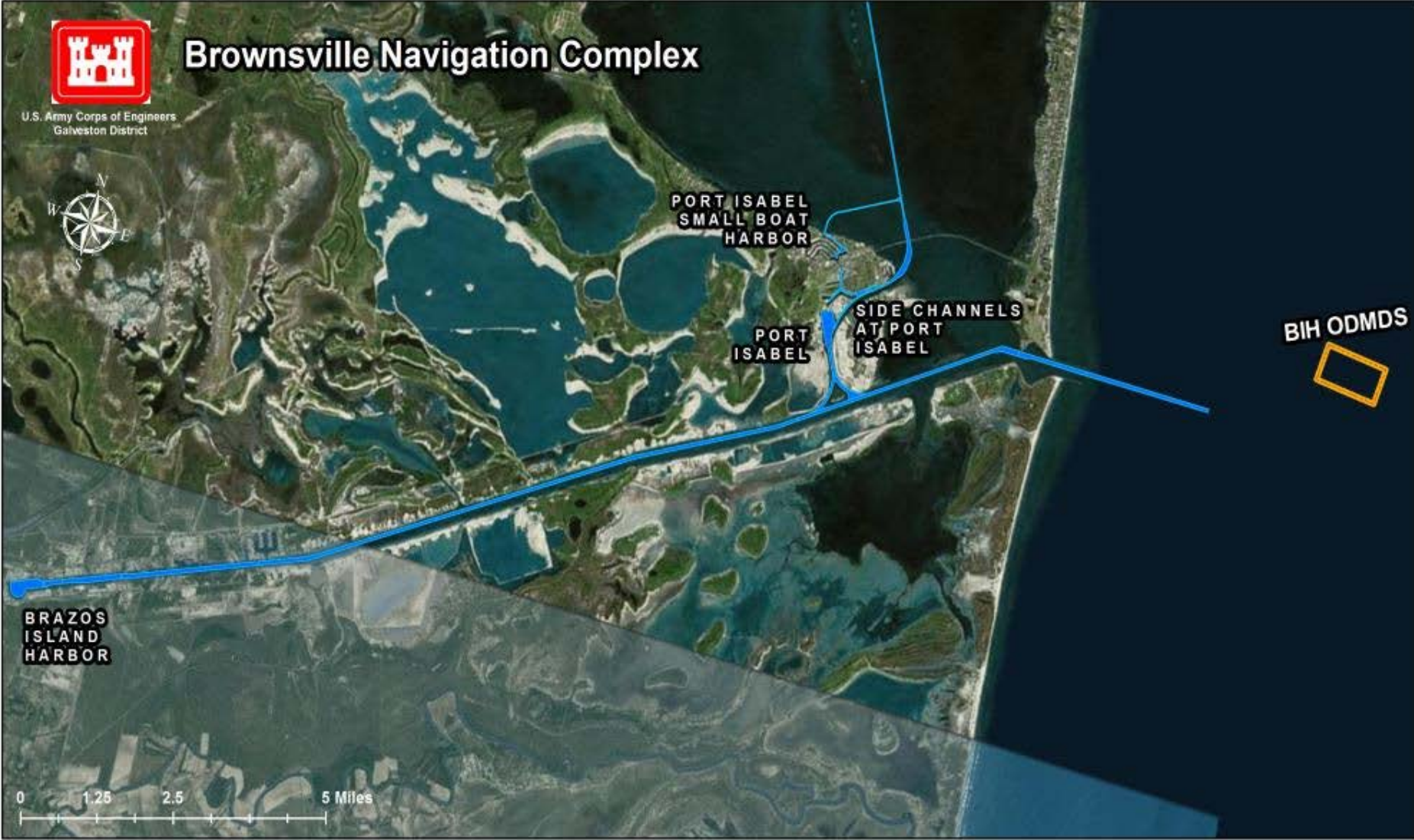
- BIH Inside Channel Hotspots
- Increased testing
- Flexibility with dredge plant



US Army Corps
of Engineers.



Ocean Disposal Partnership USACE and USEPA R6



US Army Corps of Engineers.



U.S. ARMY

Corpus Christi Ship Channel

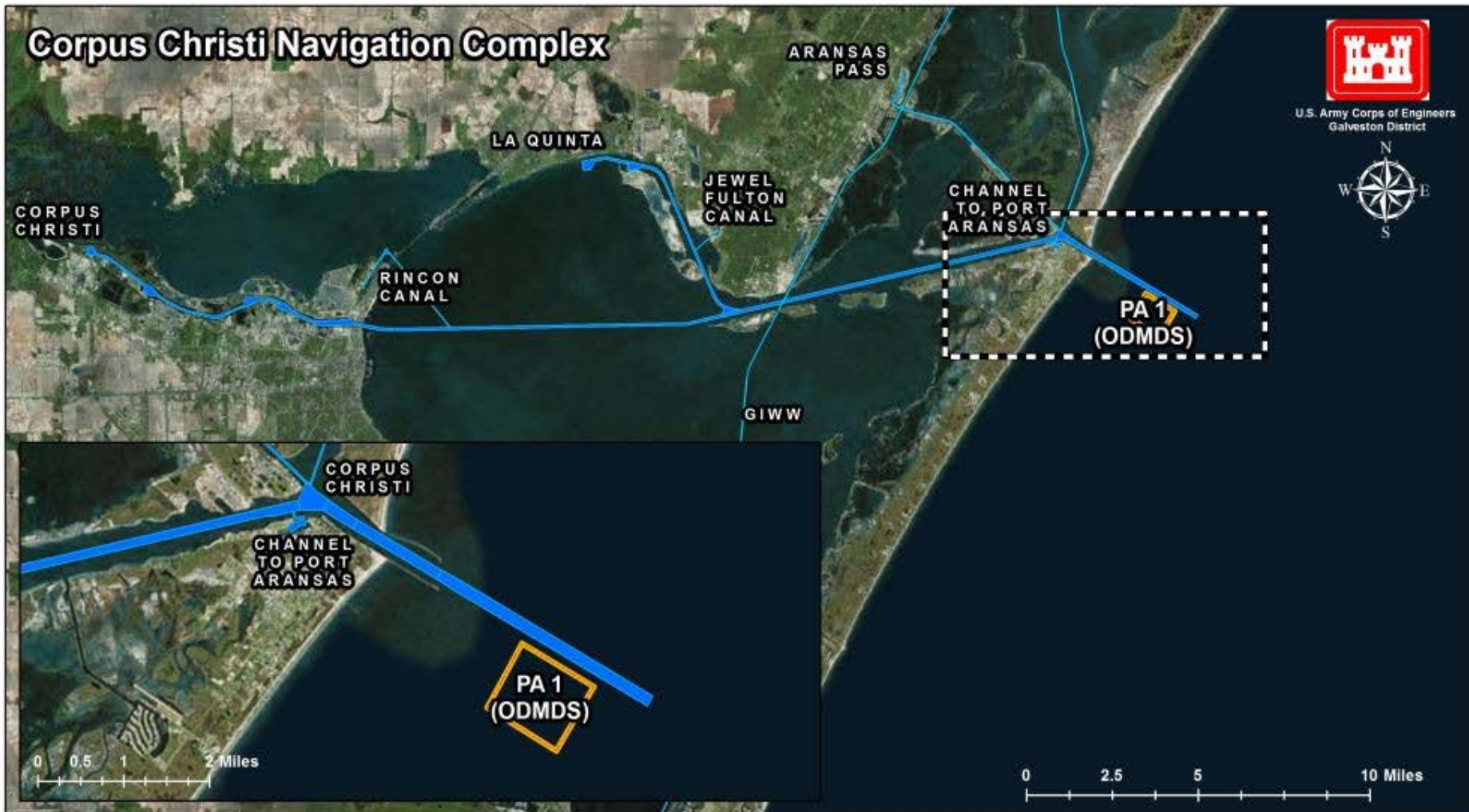
- Ferry landing hot spot
- Increased sampling
- Flexibility with dredge plant



US Army Corps
of Engineers.



Ocean Disposal Partnership USACE and USEPA R6



US Army Corps of Engineers.



U.S. ARMY

USEPA Region 6: New Initiatives

- Development of Western Gulf of Mexico Background Tissue Database
 - Background tissue concentrations for clams and worms living in the Western Gulf of Mexico
 - If tissue concentrations are less than “background” no further evaluation required
- Draft Final Data and Statistics for MPRSA Section 103 Reporting
 - Collaborative effort between EPA and ERDC
 - Policy on how data and statistics are reported in Section 103 Evaluations
 - Draft Final completed March 8, 2017



US Army Corps
of Engineers.



USEPA Region 6: Updates Old Initiatives

- ▶ Removal of excessive monitoring requirements for New Work ODMDS
 - Status of Site Management and Monitoring Plan Revisions to reflect changes
 - ▷ Brazos Island Harbor SMMP finalized May 2017
 - ▷ Corpus Christi SMMP expect to finalize Oct/Nov 2017
 - ▷ Freeport Harbor SMMP – early stages of revision
- ▶ Project specific CoCs for decision making
 - Reduces time and costs for USACE/Permittee for laboratory analysis and report writing
 - Reduces EPA review time



US Army Corps
of Engineers.



USEPA Region 6

Corpus Christi Sediment Testing Evaluation Pilot Project

▶ Partners:

- Permittee: Corpus Christi Port Authority
- Project Manager: Cheryl Montgomery, PhD., ERDC

▶ Initiatives Test Run

- Data and Statistics for MPRSA Section 103 reporting Policy
- Project specific CoCs for Corpus Christi
- Western Gulf of Mexico Background Tissue Database
- EDD file Template
- QA Summary Table Template

▶ Coordination with EPA Region 6 as issues arise

▶ Successes:

- Project is coming in significantly under budget
- Tweaked initiatives to run smoothly



US Army Corps
of Engineers.



CONNECT WITH US!



ON FACEBOOK

www.facebook.com/GalvestonDistrict



ON TWITTER

www.twitter.com/USACEgalveston



ON YOUTUBE

[www.YouTube.com/Galveston District](http://www.YouTube.com/GalvestonDistrict)



ON DVIDS

www.dvidshub.net/units/USACE-GD



ONLINE

www.swg.usace.army.mil



US Army Corps
of Engineers.

