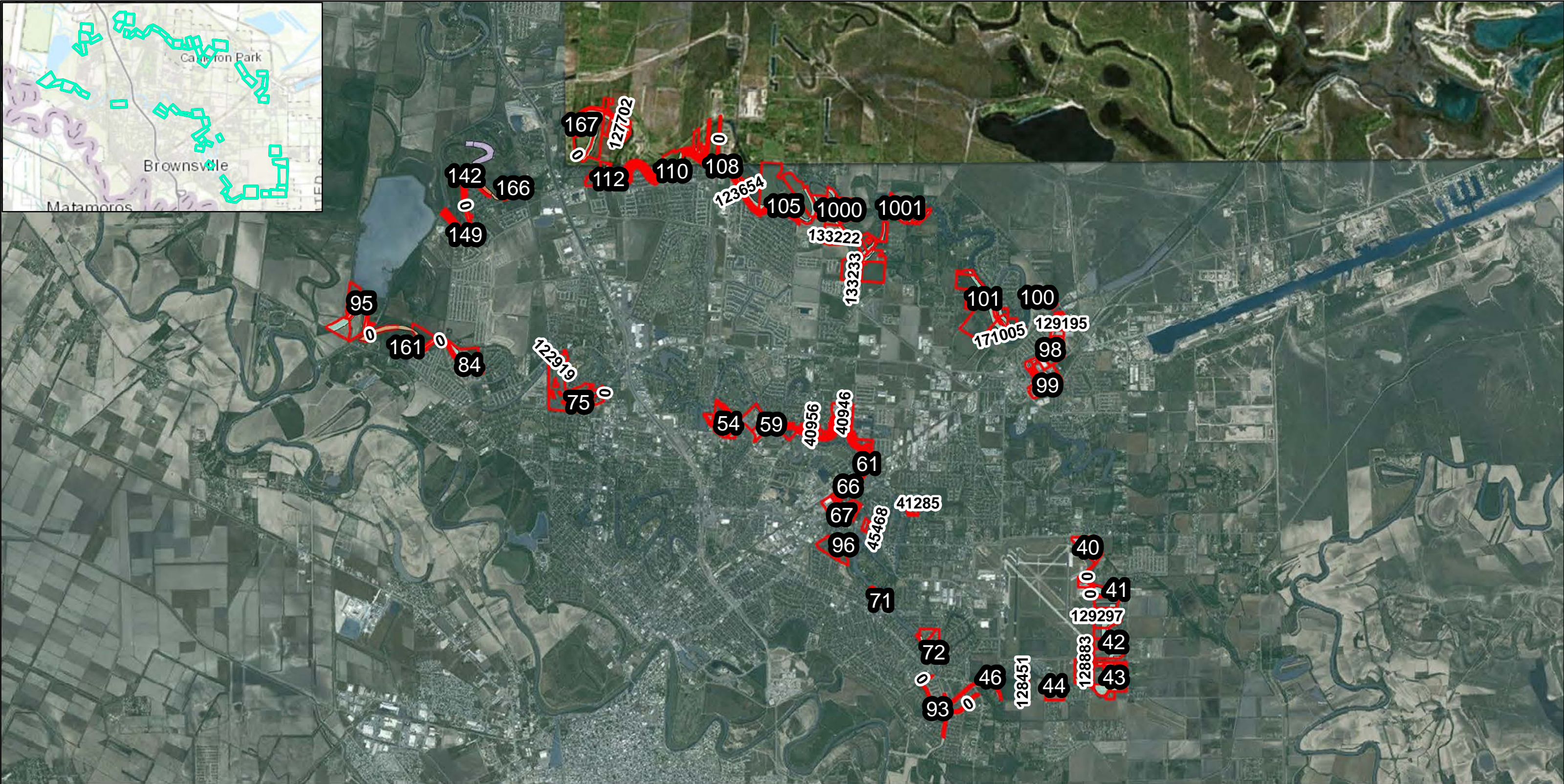
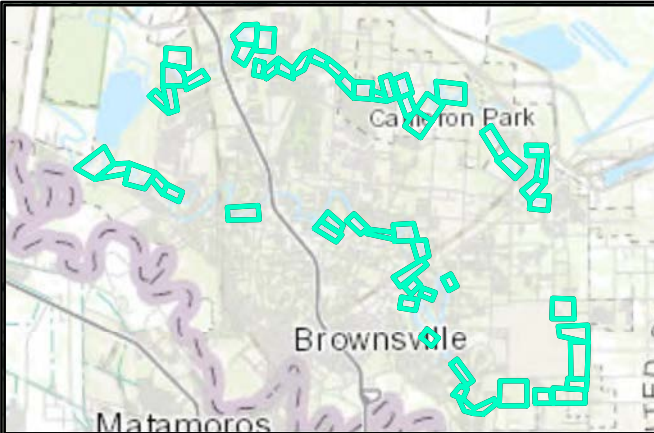


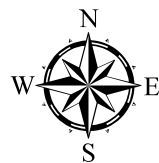
**Real Estate Plan Drawings
(Index and 58 drawings)**

Part 1

PAGE INTENTIONALLY LEFT BLANK



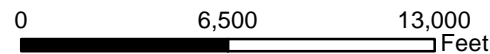
- Texas State Fish and Wildlife
- U.S. Fish and Wildlife
- Cameron County Parcels
- Resacas Study Measures
- Remainder
- 99 Resacas Number
- 150819 Parcel ID Number



DATUM: NORTH AMERICAN 1983
 PROJECTION: STATE PLANE
 ZONE: 4205 TEXAS SOUTH

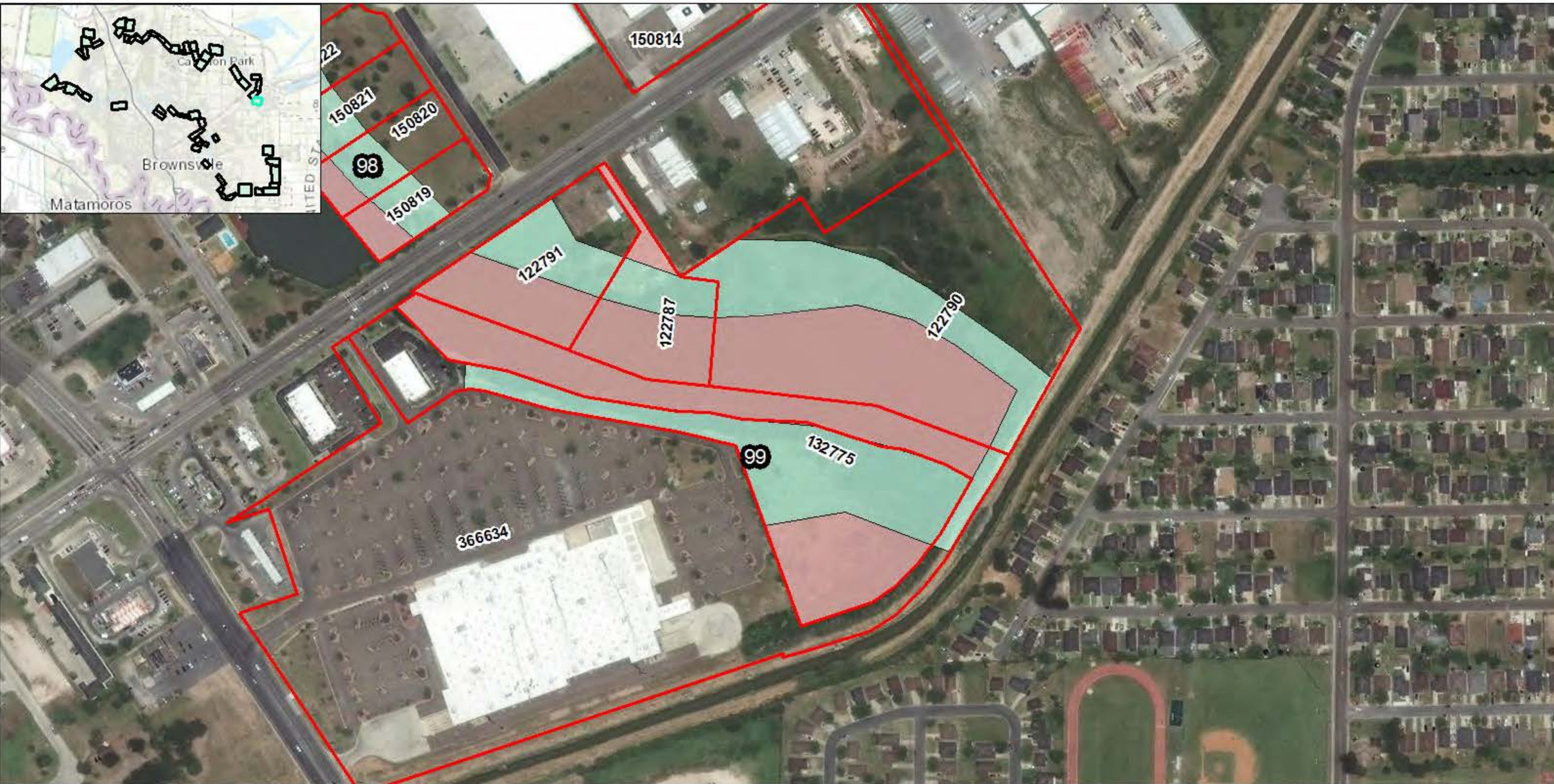
Page of

RESACAS AT BROWNSVILLE, TEXAS ECOSYSTEM RESTORATION AND FEASIBILITY STUDY



The data is only a representation of features on the earth compiled by computer program from raw data obtained from different sources and is not necessarily, in whole or in part, based upon any physical recording, study or survey, professional or otherwise, of the covered property. This information is not intended as a substitute for a field survey by a licensed professional or any other use or application that requires legal or engineering accuracy.



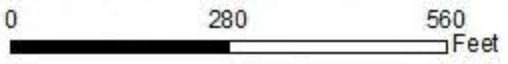


- Texas State Fish and Wildlife
- U.S. Fish and Wildlife
- Cameron County Parcels
- Resacas Study Measures
- Remainder
- 99 Resacas Number
- 150819 Parcel ID Number



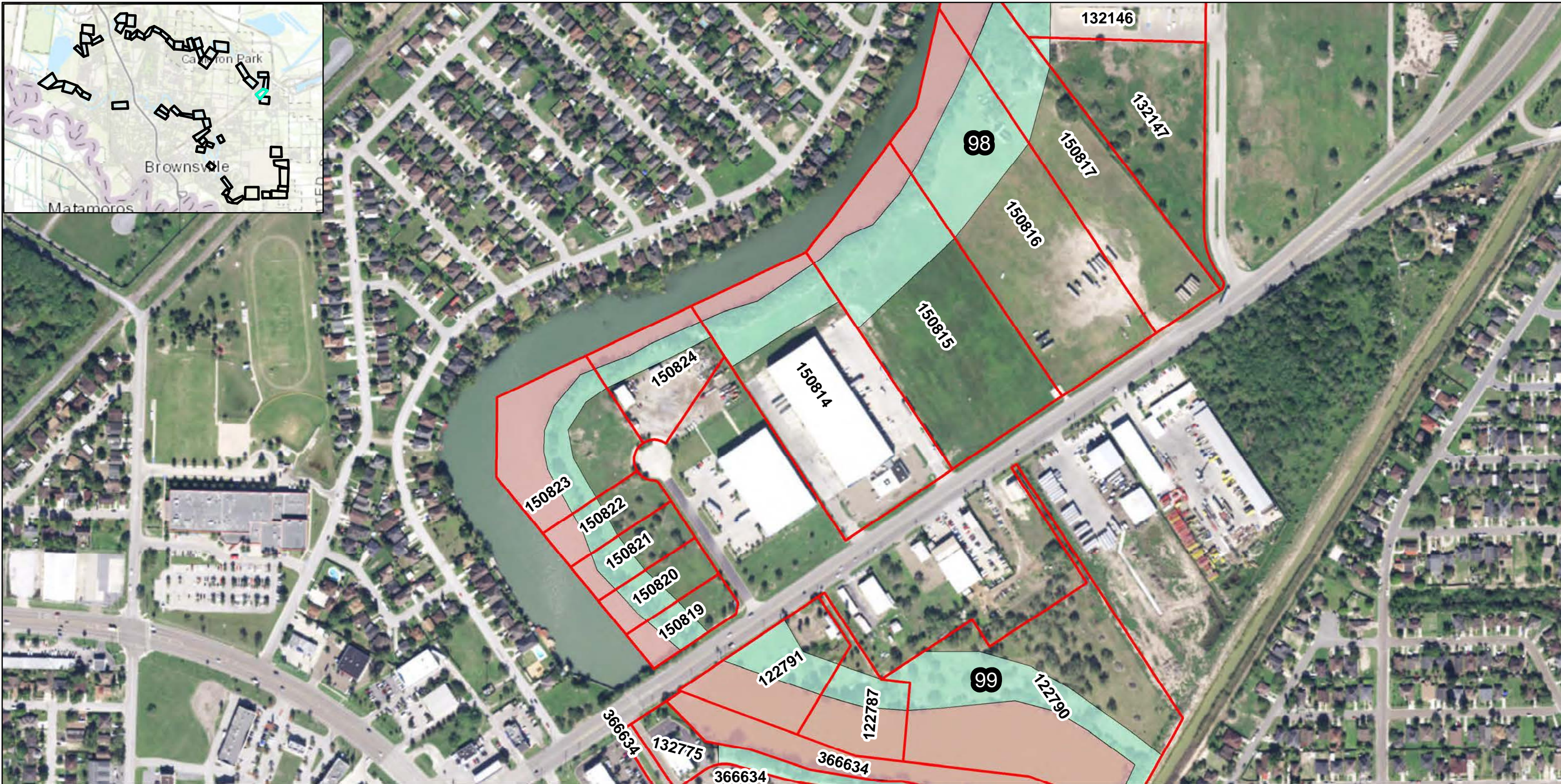
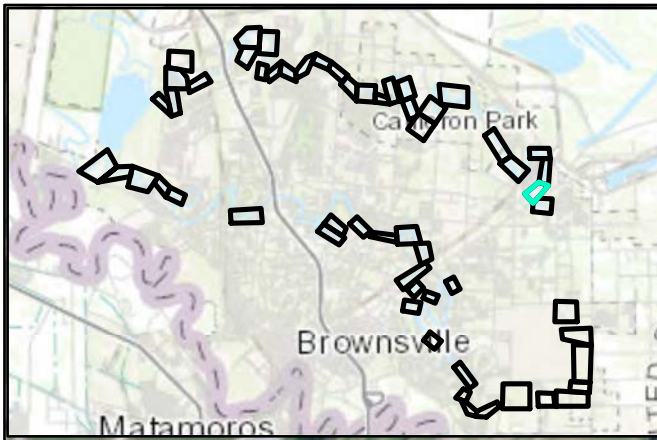
DATUM: NORTH AMERICAN 1983
 PROJECTION: STATE PLANE
 ZONE: 4205 TEXAS SOUTH

RESACAS AT BROWNSVILLE, TEXAS ECOSYSTEM RESTORATION AND FEASIBILITY STUDY



The data is only a representation of features on the earth compiled by computer program from raw data obtained from different sources and is not necessarily, in whole or in part, based upon any physical recording, study or survey, professional or otherwise, of the covered property. This information is not intended as a substitute for a field survey by a licensed professional or any other use or application that requires legal or engineering accuracy.



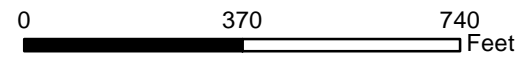


- Texas State Fish and Wildlife
- U.S. Fish and Wildlife
- Cameron County Parcels
- Resacas Study Measures
- Remainder
- 99 Resacas Number
- Parcel ID Number



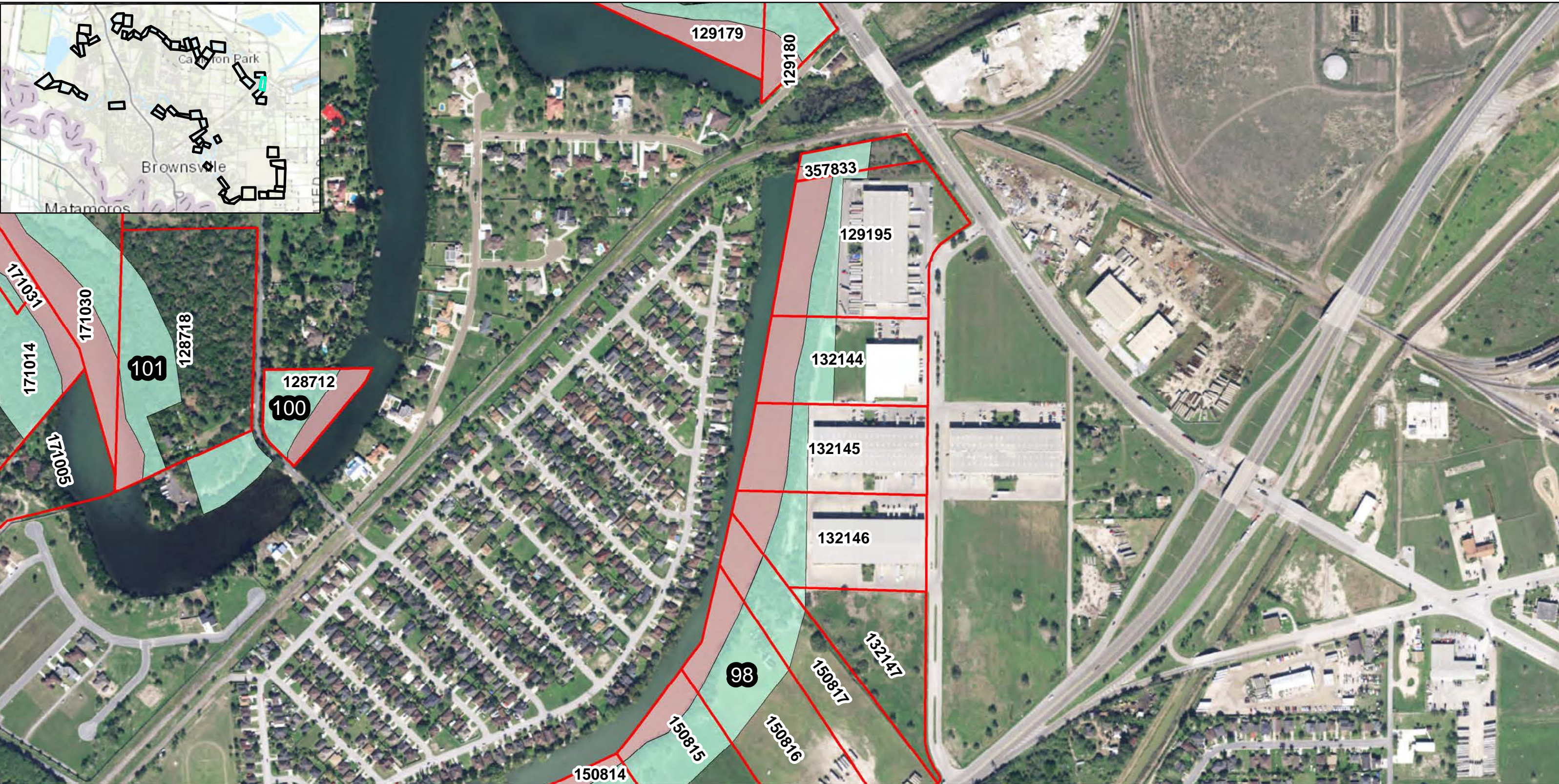
DATUM: NORTH AMERICAN 1983
 PROJECTION: STATE PLANE
 ZONE: 4205 TEXAS SOUTH

RESACAS AT BROWNSVILLE, TEXAS ECOSYSTEM RESTORATION AND FEASIBILITY STUDY



The data is only a representation of features on the earth compiled by computer program from raw data obtained from different sources and is not necessarily, in whole or in part, based upon any physical recording, study or survey, professional or otherwise, of the covered property. This information is not intended as a substitute for a field survey by a licensed professional or any other use or application that requires legal or engineering accuracy.



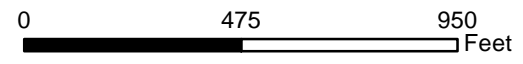


- Texas State Fish and Wildlife
- U.S. Fish and Wildlife
- Cameron County Parcels
- Resacas Study Measures
- Remainder
- 99 Resacas Number
- 150819 Parcel ID Number



DATUM: NORTH AMERICAN 1983
 PROJECTION: STATE PLANE
 ZONE: 4205 TEXAS SOUTH
 Page 3 of 58

RESACAS AT BROWNSVILLE, TEXAS ECOSYSTEM RESTORATION AND FEASIBILITY STUDY



The data is only a representation of features on the earth compiled by computer program from raw data obtained from different sources and is not necessarily, in whole or in part, based upon any physical recording, study or survey, professional or otherwise, of the covered property. This information is not intended as a substitute for a field survey by a licensed professional or any other use or application that requires legal or engineering accuracy.



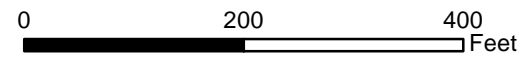


- Texas State Fish and Wildlife
- U.S. Fish and Wildlife
- Cameron County Parcels
- Resacas Study Measures
- Remainder
- 99 Resacas Number
- 150819 Parcel ID Number



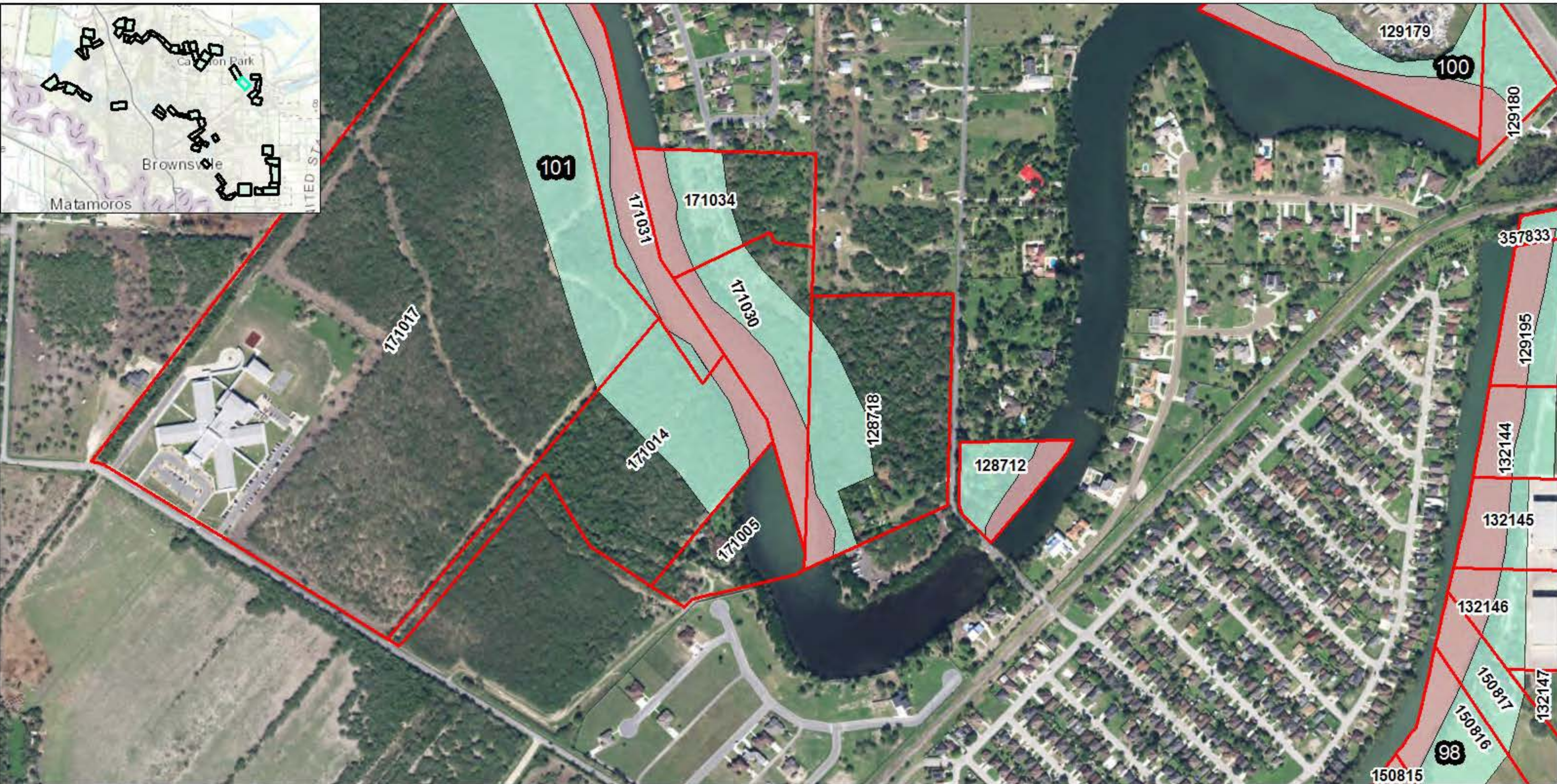
DATUM: NORTH AMERICAN 1983
 PROJECTION: STATE PLANE
 ZONE: 4205 TEXAS SOUTH
 Page 4 of 58

RESACAS AT BROWNSVILLE, TEXAS ECOSYSTEM RESTORATION AND FEASIBILITY STUDY



The data is only a representation of features on the earth compiled by computer program from raw data obtained from different sources and is not necessarily, in whole or in part, based upon any physical recording, study or survey, professional or otherwise, of the covered property. This information is not intended as a substitute for a field survey by a licensed professional or any other use or application that requires legal or engineering accuracy.



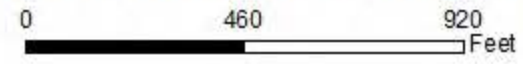


- Texas State Fish and Wildlife
- U.S. Fish and Wildlife
- Cameron County Parcels
- Resacas Study Measures
- Remainder
- 99 Resacas Number
- 150819 Parcel ID Number



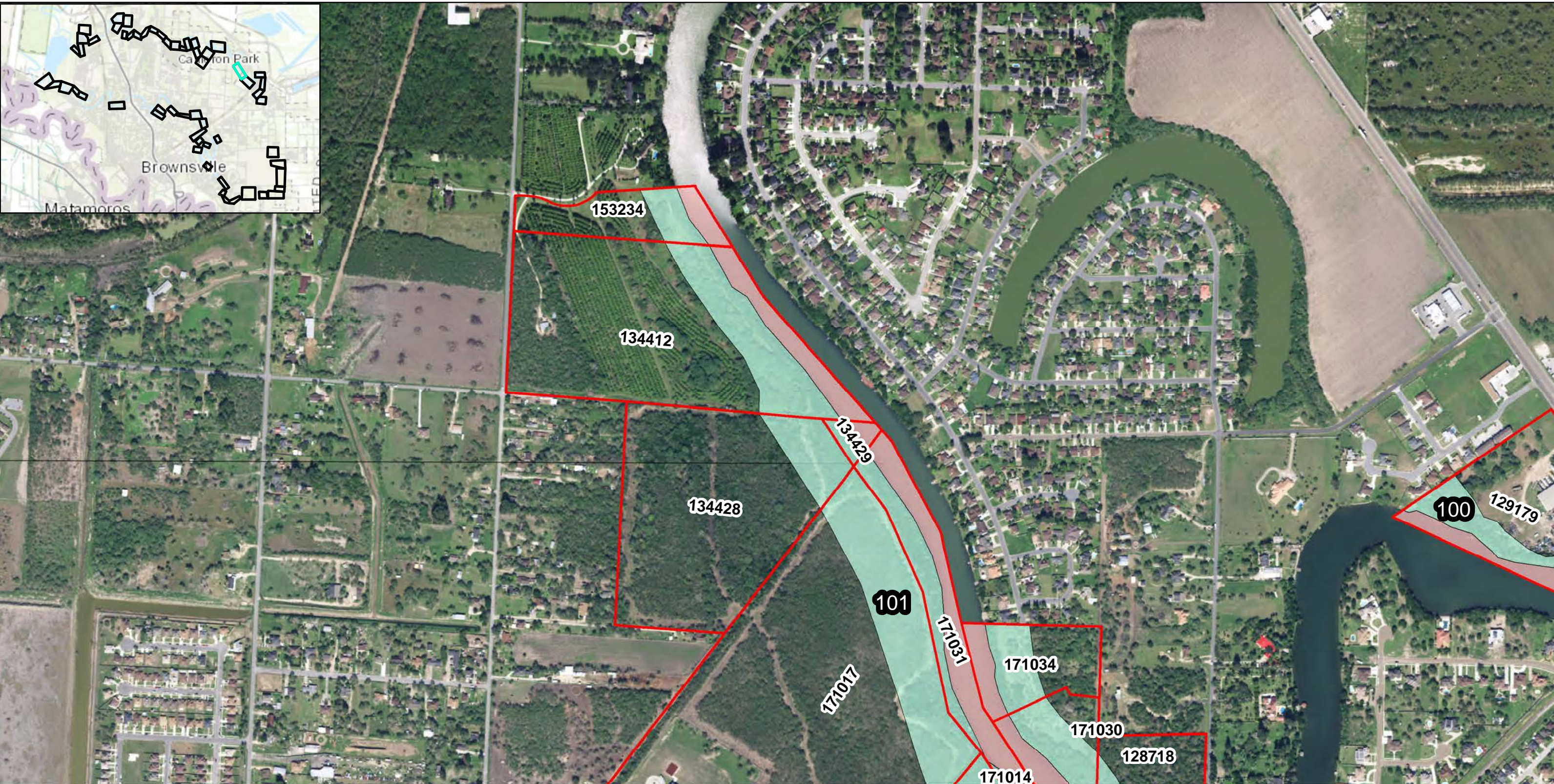
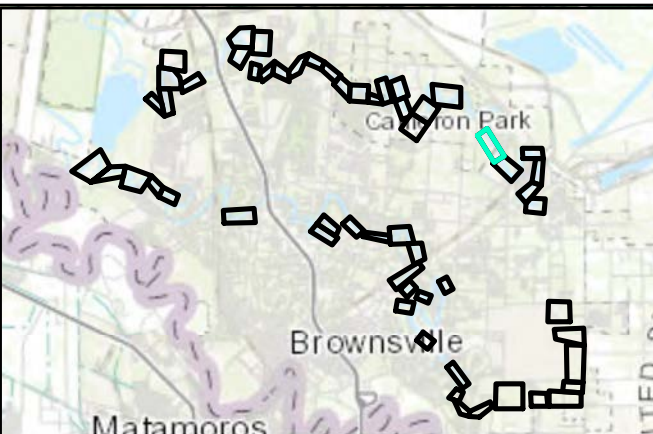
DATUM: NORTH AMERICAN 1983
 PROJECTION: STATE PLANE
 ZONE: 4205 TEXAS SOUTH

RESACAS AT BROWNSVILLE, TEXAS ECOSYSTEM RESTORATION AND FEASIBILITY STUDY



The data is only a representation of features on the earth compiled by computer program from raw data obtained from different sources and is not necessarily, in whole or in part, based upon any physical recording, study or survey, professional or otherwise, of the covered property. This information is not intended as a substitute for a field survey by a licensed professional or any other use or application that requires legal or engineering accuracy.



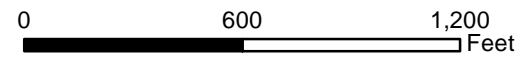


- Texas State Fish and Wildlife
- U.S. Fish and Wildlife
- Cameron County Parcels
- Resacas Study Measures
- Remainder
- 99 Resacas Number
- 150819 Parcel ID Number



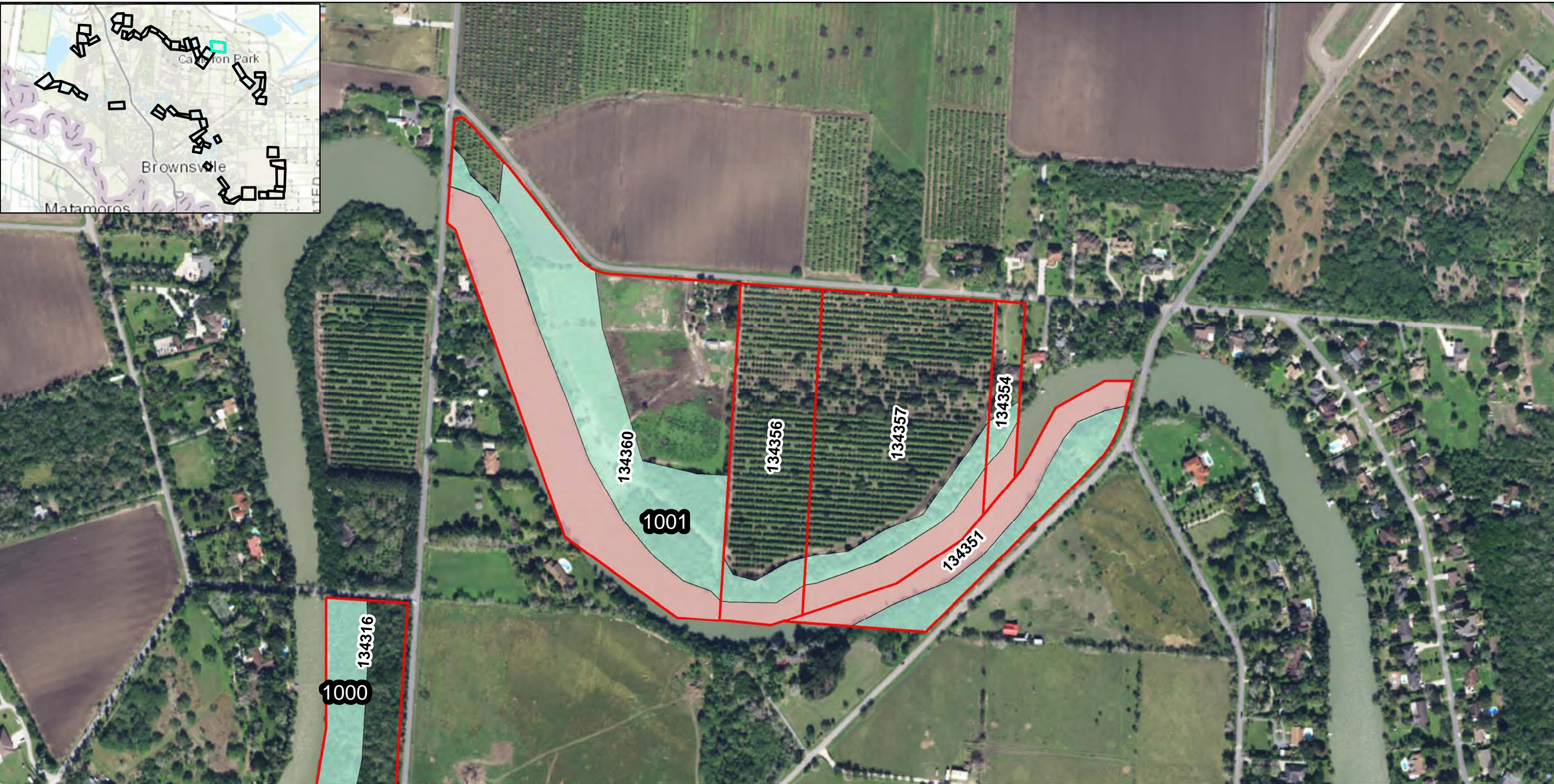
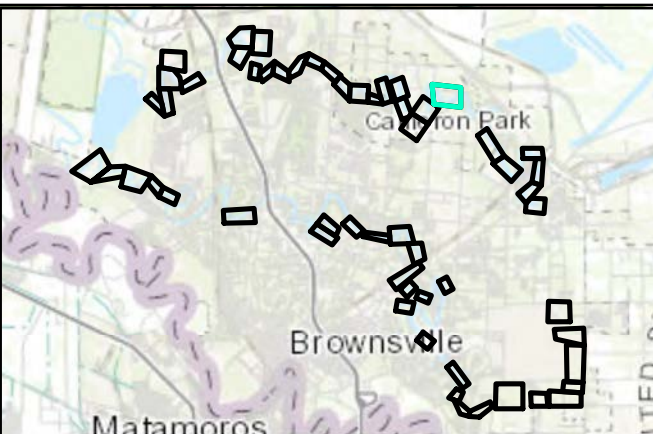
DATUM: NORTH AMERICAN 1983
 PROJECTION: STATE PLANE
 ZONE: 4205 TEXAS SOUTH
 Page 6 of 58

RESACAS AT BROWNSVILLE, TEXAS ECOSYSTEM RESTORATION AND FEASIBILITY STUDY



The data is only a representation of features on the earth compiled by computer program from raw data obtained from different sources and is not necessarily, in whole or in part, based upon any physical recording, study or survey, professional or otherwise, of the covered property. This information is not intended as a substitute for a field survey by a licensed professional or any other use or application that requires legal or engineering accuracy.



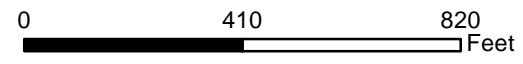


- Texas State Fish and Wildlife
- U.S. Fish and Wildlife
- Cameron County Parcels
- Resacas Study Measures
- Remainder
- 99 Resacas Number
- 150819 Parcel ID Number



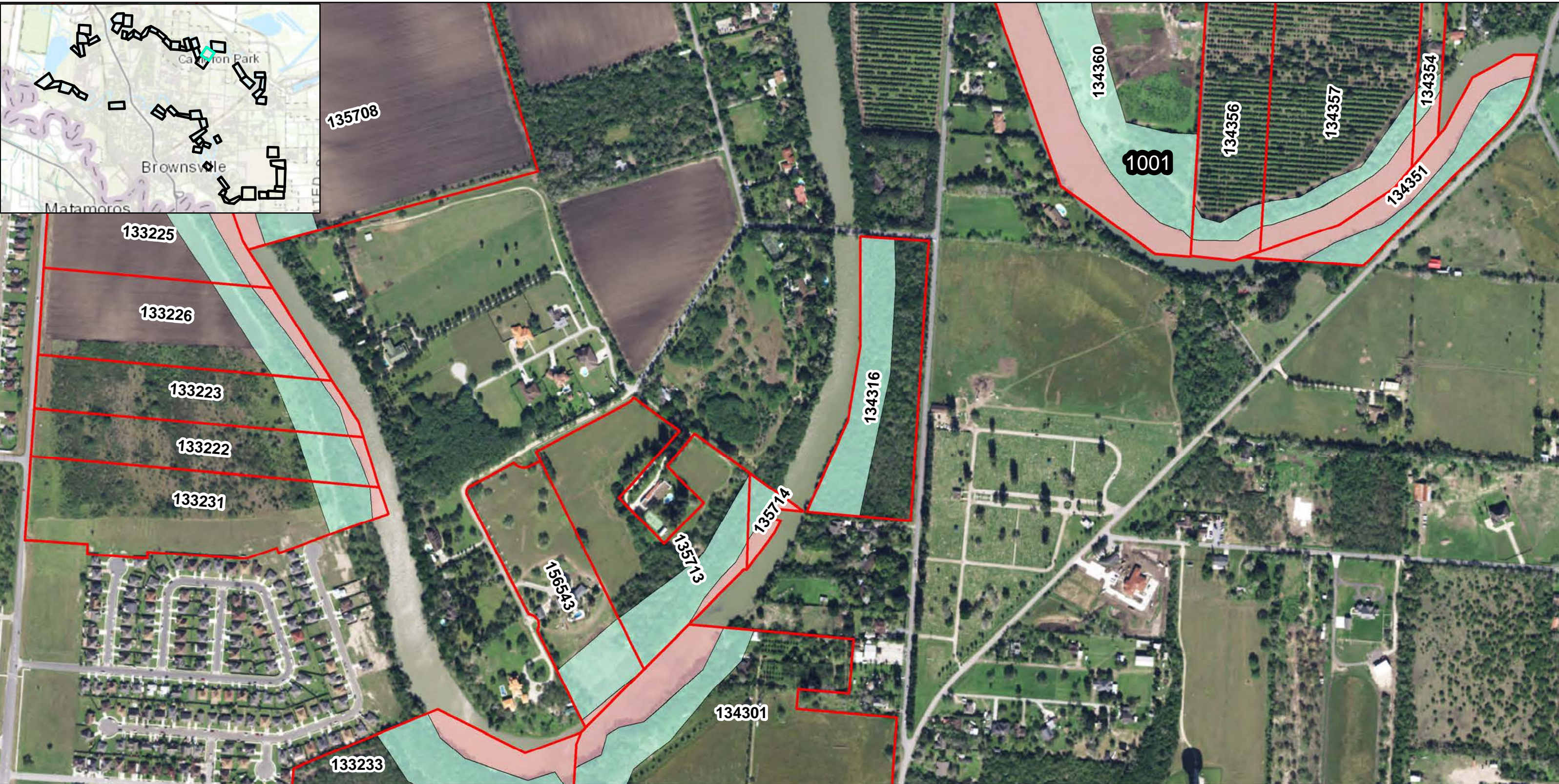
DATUM: NORTH AMERICAN 1983
 PROJECTION: STATE PLANE
 ZONE: 4205 TEXAS SOUTH

RESACAS AT BROWNSVILLE, TEXAS ECOSYSTEM RESTORATION AND FEASIBILITY STUDY



The data is only a representation of features on the earth compiled by computer program from raw data obtained from different sources and is not necessarily, in whole or in part, based upon any physical recording, study or survey, professional or otherwise, of the covered property. This information is not intended as a substitute for a field survey by a licensed professional or any other use or application that requires legal or engineering accuracy.



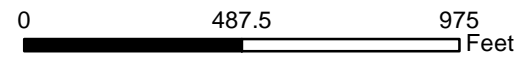


- Texas State Fish and Wildlife
- U.S. Fish and Wildlife
- Cameron County Parcels
- Resacas Study Measures
- Remainder
- 99 Resacas Number
- 150819 Parcel ID Number



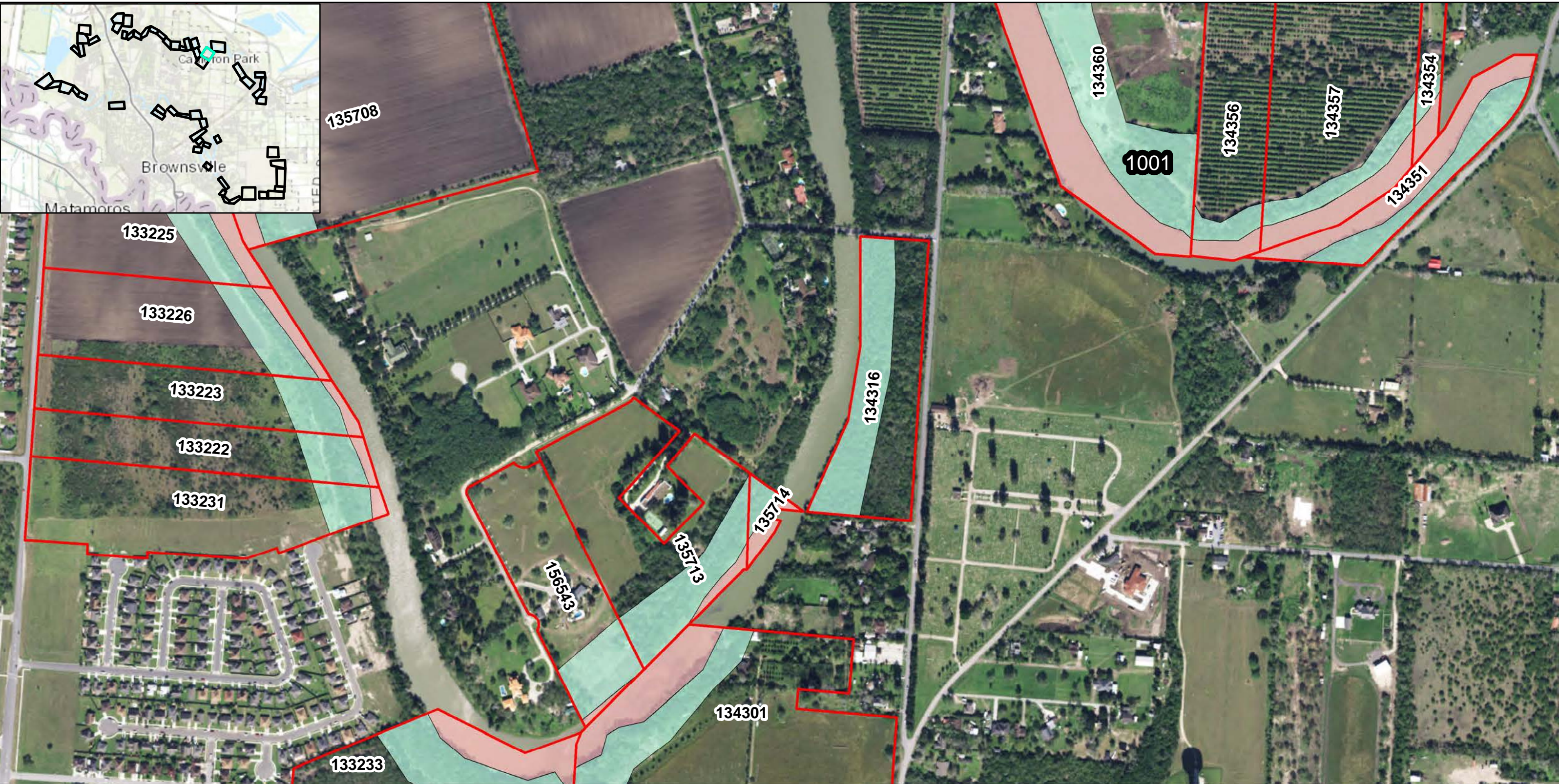
DATUM: NORTH AMERICAN 1983
 PROJECTION: STATE PLANE
 ZONE: 4205 TEXAS SOUTH
 Page 8 of 58

RESACAS AT BROWNSVILLE, TEXAS ECOSYSTEM RESTORATION AND FEASIBILITY STUDY



The data is only a representation of features on the earth compiled by computer program from raw data obtained from different sources and is not necessarily, in whole or in part, based upon any physical recording, study or survey, professional or otherwise, of the covered property. This information is not intended as a substitute for a field survey by a licensed professional or any other use or application that requires legal or engineering accuracy.



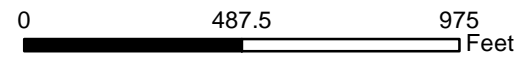


- Texas State Fish and Wildlife
- U.S. Fish and Wildlife
- Cameron County Parcels
- Resacas Study Measures
- Remainder
- 99 Resacas Number
- 150819 Parcel ID Number



DATUM: NORTH AMERICAN 1983
 PROJECTION: STATE PLANE
 ZONE: 4205 TEXAS SOUTH
 Page 8 of 58

RESACAS AT BROWNSVILLE, TEXAS ECOSYSTEM RESTORATION AND FEASIBILITY STUDY



The data is only a representation of features on the earth compiled by computer program from raw data obtained from different sources and is not necessarily, in whole or in part, based upon any physical recording, study or survey, professional or otherwise, of the covered property. This information is not intended as a substitute for a field survey by a licensed professional or any other use or application that requires legal or engineering accuracy.



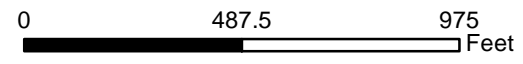


- Texas State Fish and Wildlife
- U.S. Fish and Wildlife
- Cameron County Parcels
- Resacas Study Measures
- Remainder
- 99 Resacas Number
- 150819 Parcel ID Number



DATUM: NORTH AMERICAN 1983
 PROJECTION: STATE PLANE
 ZONE: 4205 TEXAS SOUTH
 Page 9 of 58

RESACAS AT BROWNSVILLE, TEXAS ECOSYSTEM RESTORATION AND FEASIBILITY STUDY



The data is only a representation of features on the earth compiled by computer program from raw data obtained from different sources and is not necessarily, in whole or in part, based upon any physical recording, study or survey, professional or otherwise, of the covered property. This information is not intended as a substitute for a field survey by a licensed professional or any other use or application that requires legal or engineering accuracy.



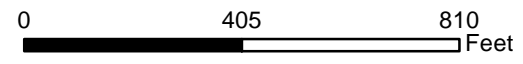


- Texas State Fish and Wildlife
- U.S. Fish and Wildlife
- Cameron County Parcels
- Resacas Study Measures
- Remainder
- 99 Resacas Number
- Parcel ID Number



DATUM: NORTH AMERICAN 1983
 PROJECTION: STATE PLANE
 ZONE: 4205 TEXAS SOUTH
 Page 10 of 58

RESACAS AT BROWNSVILLE, TEXAS ECOSYSTEM RESTORATION AND FEASIBILITY STUDY



The data is only a representation of features on the earth compiled by computer program from raw data obtained from different sources and is not necessarily, in whole or in part, based upon any physical recording, study or survey, professional or otherwise, of the covered property. This information is not intended as a substitute for a field survey by a licensed professional or any other use or application that requires legal or engineering accuracy.



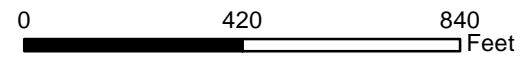


- Texas State Fish and Wildlife
- U.S. Fish and Wildlife
- Cameron County Parcels
- Resacas Study Measures
- Remainder
- 99 Resacas Number
- 150819 Parcel ID Number



DATUM: NORTH AMERICAN 1983
 PROJECTION: STATE PLANE
 ZONE: 4205 TEXAS SOUTH
 Page 11 of 58

RESACAS AT BROWNSVILLE, TEXAS ECOSYSTEM RESTORATION AND FEASIBILITY STUDY



The data is only a representation of features on the earth compiled by computer program from raw data obtained from different sources and is not necessarily, in whole or in part, based upon any physical recording, study or survey, professional or otherwise, of the covered property. This information is not intended as a substitute for a field survey by a licensed professional or any other use or application that requires legal or engineering accuracy.



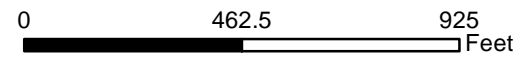


- Texas State Fish and Wildlife
- U.S. Fish and Wildlife
- Cameron County Parcels
- Resacas Study Measures
- Remainder
- 99 Resacas Number
- 150819 Parcel ID Number



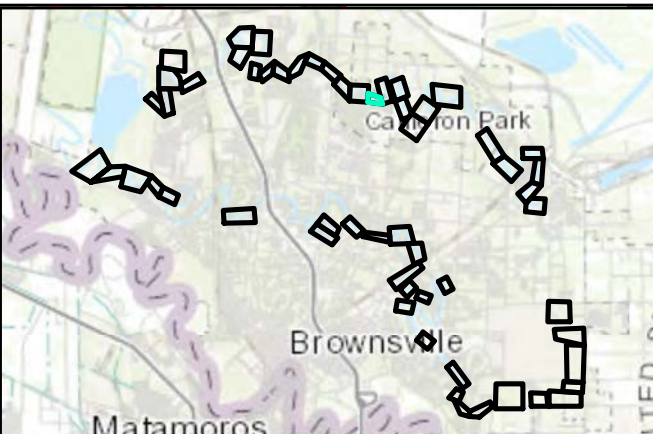
DATUM: NORTH AMERICAN 1983
 PROJECTION: STATE PLANE
 ZONE: 4205 TEXAS SOUTH
 Page 12 of 58

RESACAS AT BROWNSVILLE, TEXAS ECOSYSTEM RESTORATION AND FEASIBILITY STUDY



The data is only a representation of features on the earth compiled by computer program from raw data obtained from different sources and is not necessarily, in whole or in part, based upon any physical recording, study or survey, professional or otherwise, of the covered property. This information is not intended as a substitute for a field survey by a licensed professional or any other use or application that requires legal or engineering accuracy.



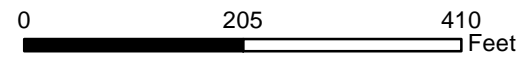


- Texas State Fish and Wildlife
- U.S. Fish and Wildlife
- Cameron County Parcels
- Resacas Study Measures
- Remainder
- 99 Resacas Number
- 150819 Parcel ID Number



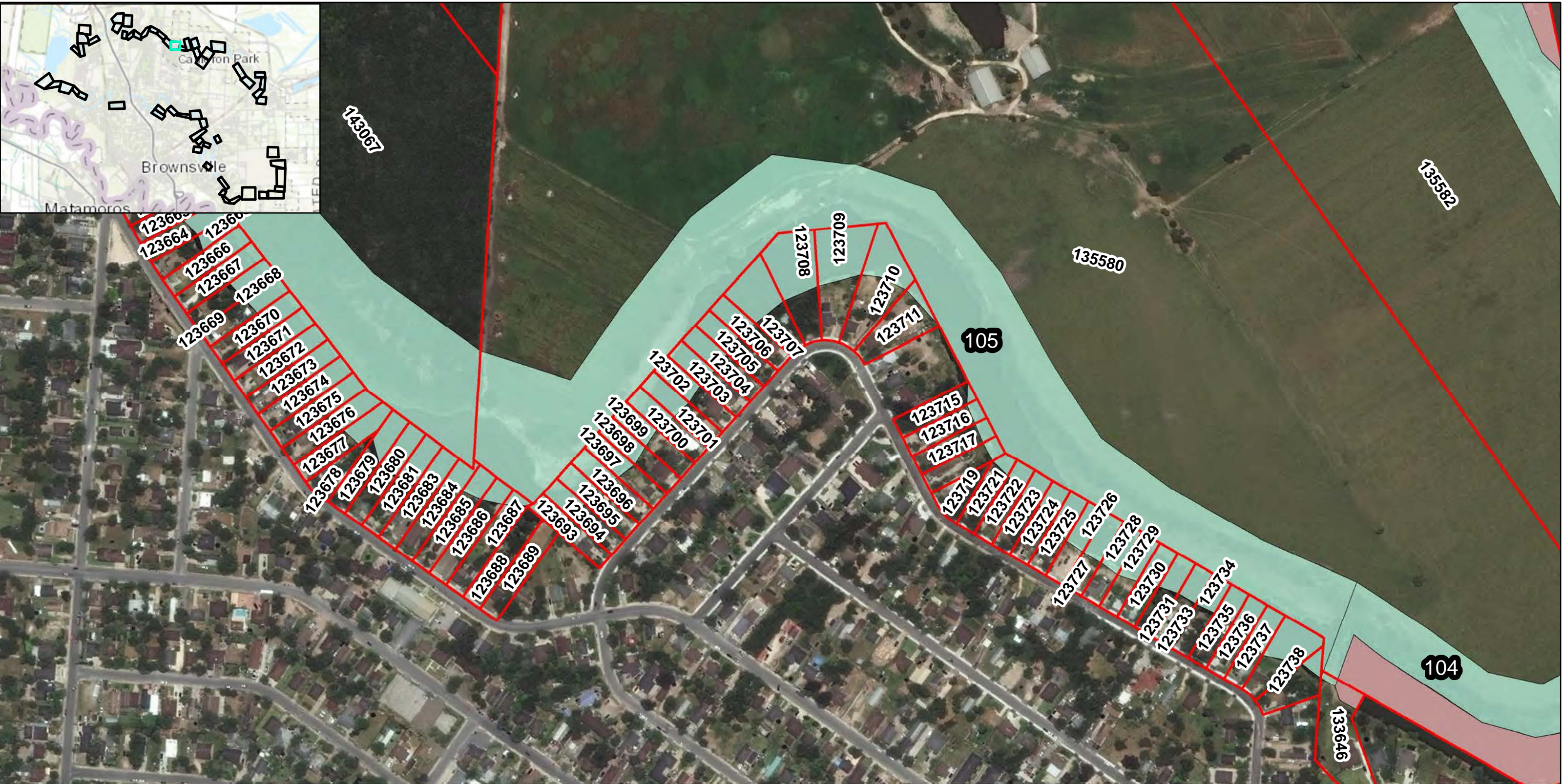
DATUM: NORTH AMERICAN 1983
 PROJECTION: STATE PLANE
 ZONE: 4205 TEXAS SOUTH
 Page 13 of 58

RESACAS AT BROWNSVILLE, TEXAS ECOSYSTEM RESTORATION AND FEASIBILITY STUDY



The data is only a representation of features on the earth compiled by computer program from raw data obtained from different sources and is not necessarily, in whole or in part, based upon any physical recording, study or survey, professional or otherwise, of the covered property. This information is not intended as a substitute for a field survey by a licensed professional or any other use or application that requires legal or engineering accuracy.



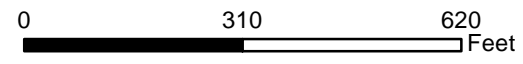


- Texas State Fish and Wildlife
- U.S. Fish and Wildlife
- Cameron County Parcels
- Resacas Study Measures
- Remainder
- 99 Resacas Number
- 150819 Parcel ID Number



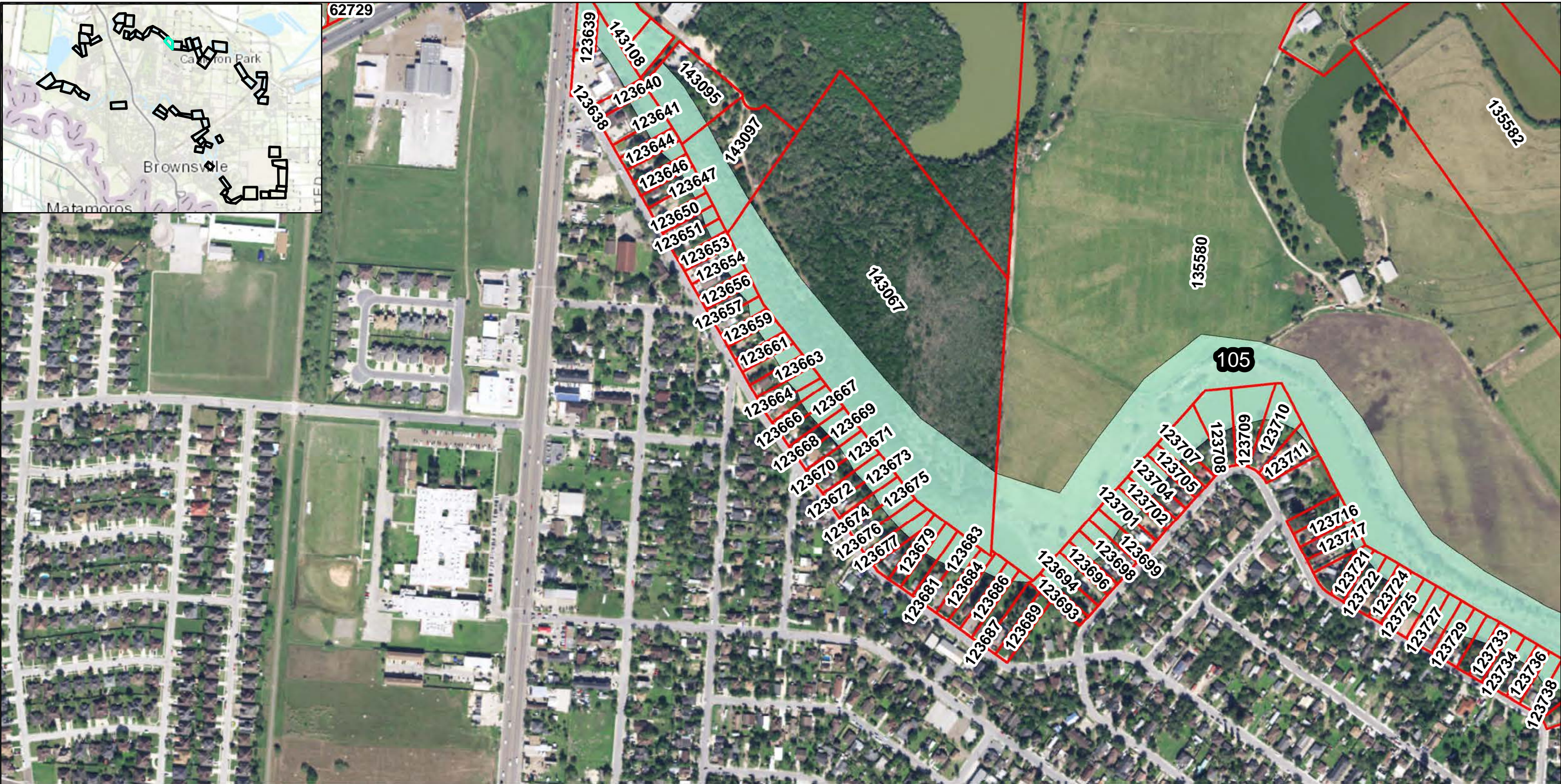
DATUM: NORTH AMERICAN 1983
 PROJECTION: STATE PLANE
 ZONE: 4205 TEXAS SOUTH

RESACAS AT BROWNSVILLE, TEXAS ECOSYSTEM RESTORATION AND FEASIBILITY STUDY



The data is only a representation of features on the earth compiled by computer program from raw data obtained from different sources and is not necessarily, in whole or in part, based upon any physical recording, study or survey, professional or otherwise, of the covered property. This information is not intended as a substitute for a field survey by a licensed professional or any other use or application that requires legal or engineering accuracy.



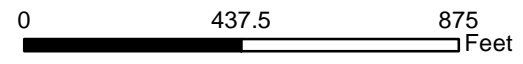


- Texas State Fish and Wildlife
- U.S. Fish and Wildlife
- Cameron County Parcels
- Resacas Study Measures
- Remainder
- 99 Resacas Number
- 150819 Parcel ID Number



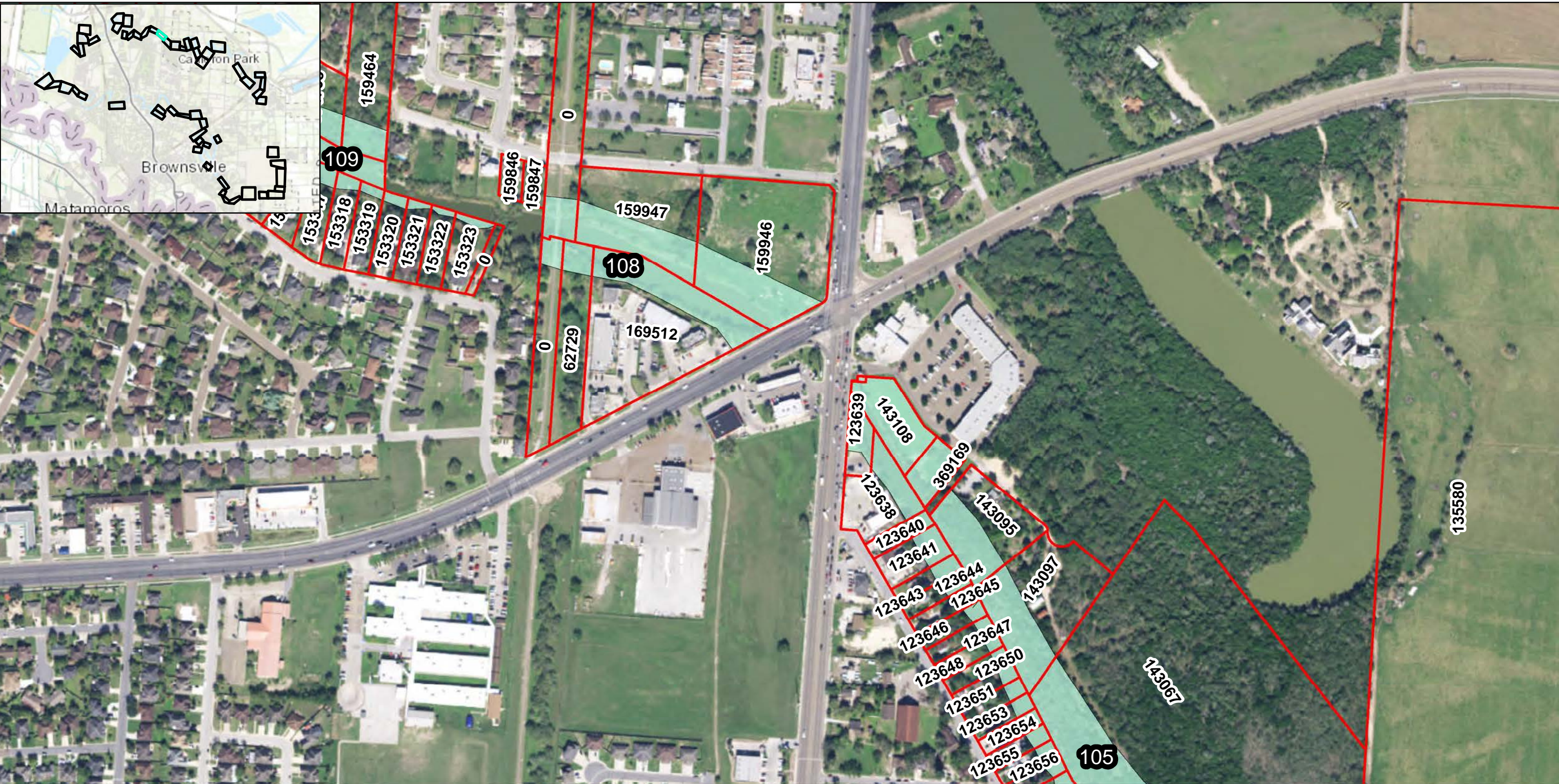
DATUM: NORTH AMERICAN 1983
 PROJECTION: STATE PLANE
 ZONE: 4205 TEXAS SOUTH
 Page 15 of 58

RESACAS AT BROWNSVILLE, TEXAS ECOSYSTEM RESTORATION AND FEASIBILITY STUDY



The data is only a representation of features on the earth compiled by computer program from raw data obtained from different sources and is not necessarily, in whole or in part, based upon any physical recording, study or survey, professional or otherwise, of the covered property. This information is not intended as a substitute for a field survey by a licensed professional or any other use or application that requires legal or engineering accuracy.



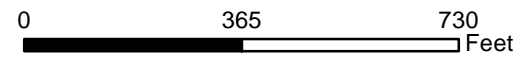


- Texas State Fish and Wildlife
- U.S. Fish and Wildlife
- Cameron County Parcels
- Resacas Study Measures
- Remainder
- 99 Resacas Number
- 150819 Parcel ID Number



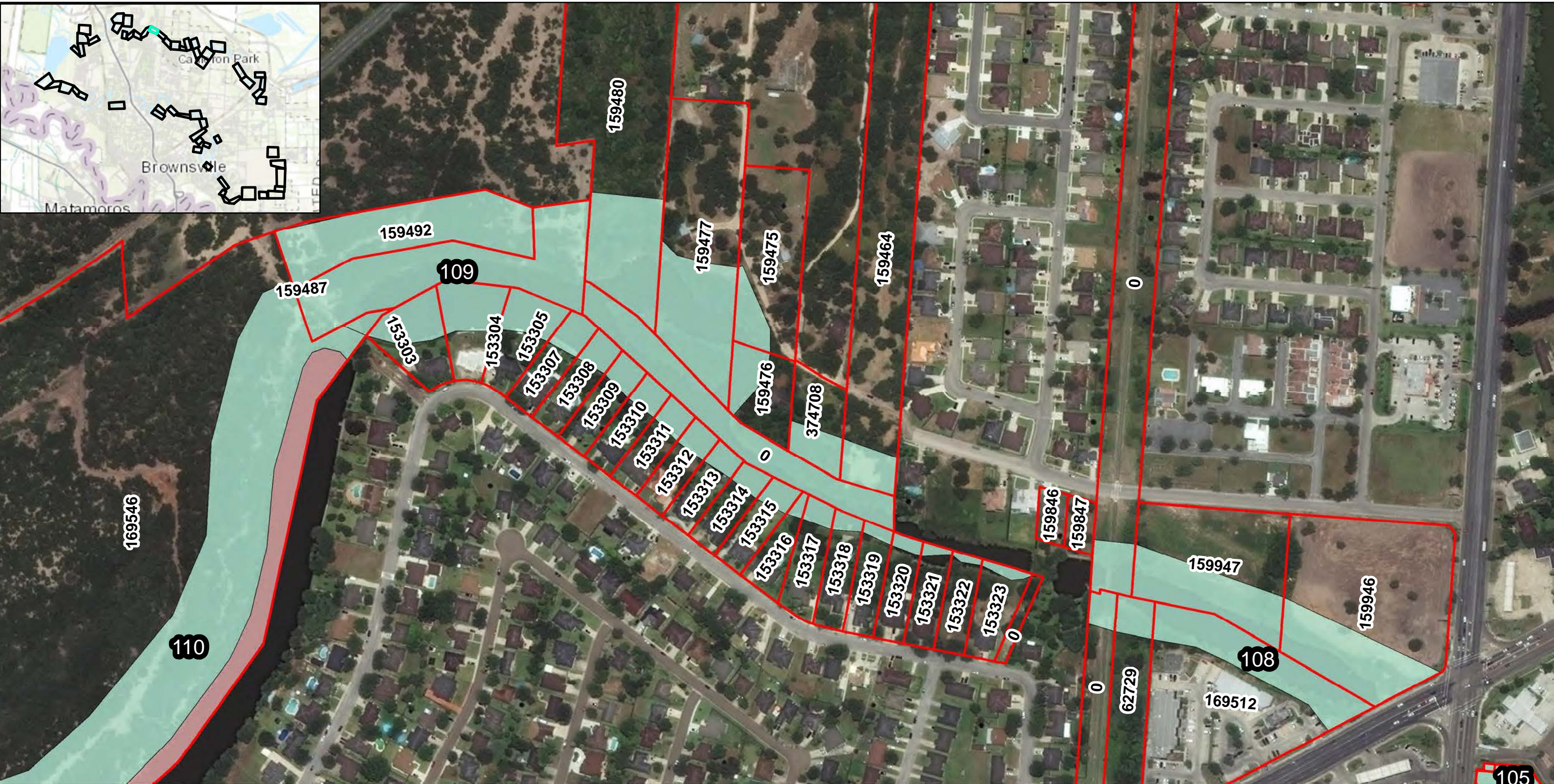
DATUM: NORTH AMERICAN 1983
 PROJECTION: STATE PLANE
 ZONE: 4205 TEXAS SOUTH
 Page 16 of 58

RESACAS AT BROWNSVILLE, TEXAS ECOSYSTEM RESTORATION AND FEASIBILITY STUDY



The data is only a representation of features on the earth compiled by computer program from raw data obtained from different sources and is not necessarily, in whole or in part, based upon any physical recording, study or survey, professional or otherwise, of the covered property. This information is not intended as a substitute for a field survey by a licensed professional or any other use or application that requires legal or engineering accuracy.



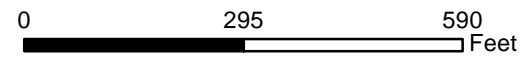


- Texas State Fish and Wildlife
- U.S. Fish and Wildlife
- Cameron County Parcels
- Resacas Study Measures
- Remainder
- 99 Resacas Number
- 150819 Parcel ID Number



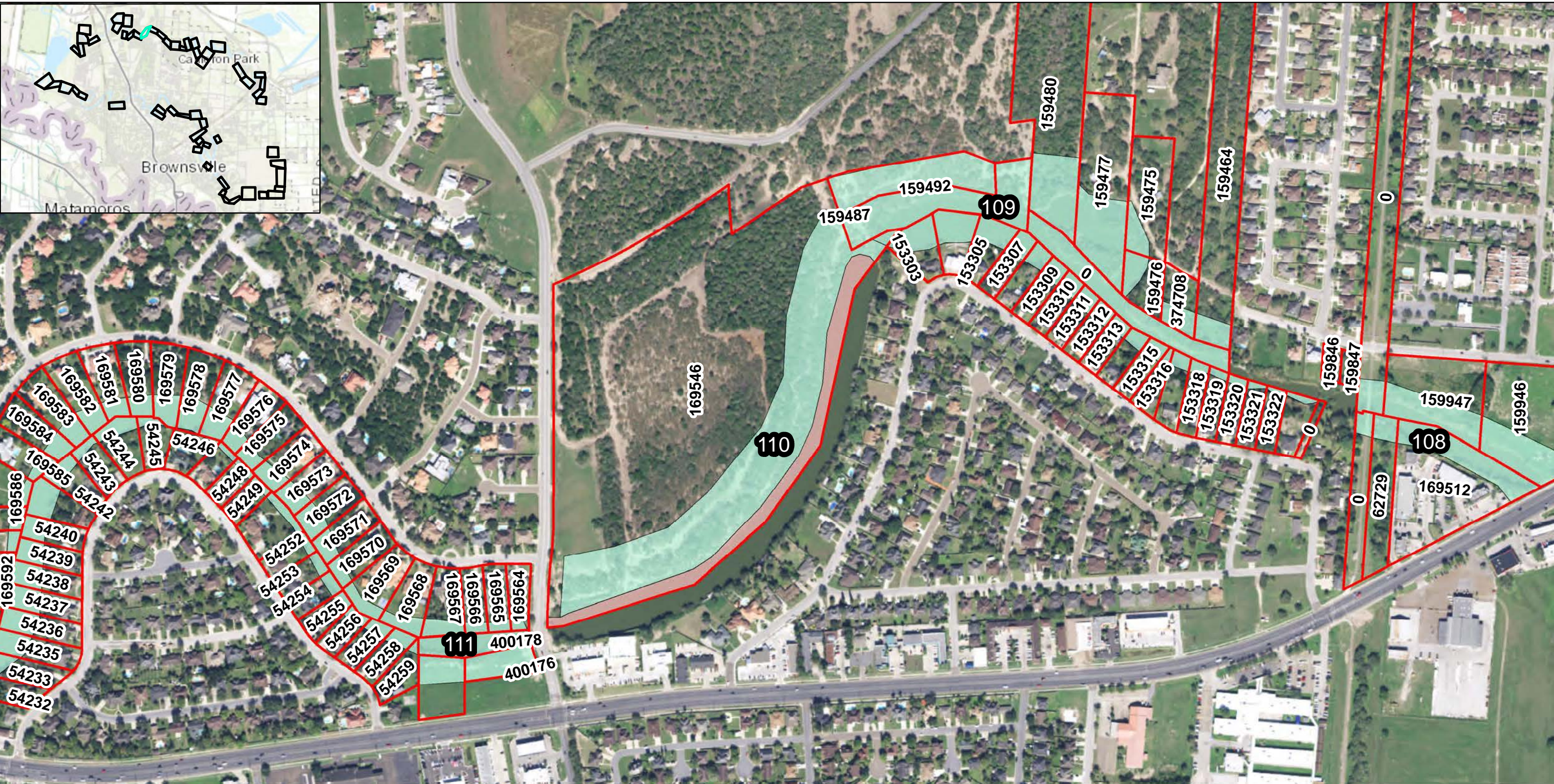
DATUM: NORTH AMERICAN 1983
 PROJECTION: STATE PLANE
 ZONE: 4205 TEXAS SOUTH
 Page 17 of 58

RESACAS AT BROWNSVILLE, TEXAS ECOSYSTEM RESTORATION AND FEASIBILITY STUDY



The data is only a representation of features on the earth compiled by computer program from raw data obtained from different sources and is not necessarily, in whole or in part, based upon any physical recording, study or survey, professional or otherwise, of the covered property. This information is not intended as a substitute for a field survey by a licensed professional or any other use or application that requires legal or engineering accuracy.



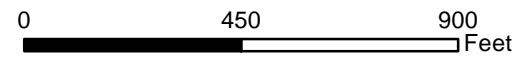


- Texas State Fish and Wildlife
- U.S. Fish and Wildlife
- Cameron County Parcels
- Resacas Study Measures
- Remainder
- 99 Resacas Number
- 150819 Parcel ID Number



DATUM: NORTH AMERICAN 1983
 PROJECTION: STATE PLANE
 ZONE: 4205 TEXAS SOUTH

RESACAS AT BROWNSVILLE, TEXAS ECOSYSTEM RESTORATION AND FEASIBILITY STUDY



The data is only a representation of features on the earth compiled by computer program from raw data obtained from different sources and is not necessarily, in whole or in part, based upon any physical recording, study or survey, professional or otherwise, of the covered property. This information is not intended as a substitute for a field survey by a licensed professional or any other use or application that requires legal or engineering accuracy.

