

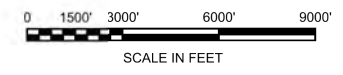
File: W:\CADD\Projects\Sn\Sabine to Galveston\Appendix sheets\20160729 Port_Arthur.tc.dgn
 Model Name: C-24
 By: m3ececjm

Date: 9/19/2016 Time: 2:06:29 PM



LEGEND
 — LEVEE
 — FLOODWALL

REACH 1 - STA 0+00 TO 381+30
 REACH 2 - STA 381+30 TO 579+87
 REACH 3 - STA 579+87 TO 733+41
 REACH 4 - STA 733+41 TO 970+00
 REACH 5 - STA 970+00 TO 1609+00



Rev.	Description	Date	By

U.S. ARMY ENGINEER DISTRICT, GALVESTON
 CORPS OF ENGINEERS
 GALVESTON, TEXAS

DATE: 9/19/2016
 SCALE: AS SHOWN
 APPROVAL RECOMMENDED BY: Chief, Engineering Branch
 APPROVED BY: Chief, Engineering and Construction Division

PREPARED UNDER THE DIRECTION OF
 LARS N. ZETTERSTROM, COL, P.E.
 DISTRICT COMMANDER

SABINE TO GALVESTON
 FEASIBILITY STUDY
 (DRAFT PLANS - NOT FOR CONSTRUCTION)

PORT ARTHUR AND VICINITY CSRM
 OVERVIEW MAP

Drawing No.:
C-24

File: W:\CADD\Projects\Sn\Sabine to Galveston\Appendix sheets\20160729 Port_Arthur.tc.dgn
 Model Name: C-25
 By: m3ececjm

Date: 9/19/2016 Time: 2:07:19 PM



- LEGEND**
- LEVEE
 - FLOODWALL
 - - - SHEET BOUNDARY
 - C-XX SHEET NUMBER



Rev.	Description	Date	By

Drawn by:	CJM	Date:	9/19/2016	Rev.:	
Designed by:	CJM	Scale:	AS SHOWN	Approval:	AS SHOWN
Submitted by:		Approval:		Recommended by:	
Approved by:		Chief, Engineering Branch		Chief, Engineering and Construction Division	

U.S. ARMY ENGINEER DISTRICT, GALVESTON
 CORPS OF ENGINEERS
 GALVESTON, TEXAS

PREPARED UNDER THE DIRECTION OF
 LARS N. ZETTERSTROM, COL, P.E.
 DISTRICT COMMANDER

SABINE TO GALVESTON
 FEASIBILITY STUDY
 (DRAFT PLANS - NOT FOR CONSTRUCTION)

PORT ARTHUR AND VICINITY CSRM
 LOCATION PLAN

Drawing No.:

C-25



Rev.	Description	Date	By

Drawn by: C:JM Date: 9/19/2016 Rev.
 Designed by: C:JM Scale: AS SHOWN
 Submitted by: Approval Recommended:
 Approved by: Chief, Engineering Branch
 Chief, Engineering and Construction Division

U.S. ARMY ENGINEER DISTRICT, GALVESTON
 CORPS OF ENGINEERS
 GALVESTON, TEXAS
 PREPARED UNDER THE DIRECTION OF
 LARS N. ZETTERSTROM, COL, P.E.
 DISTRICT COMMANDER

SABINE TO GALVESTON
 FEASIBILITY STUDY
 (DRAFT PLANS - NOT FOR CONSTRUCTION)
 PORT ARTHUR AND VICINITY CSRM
 PORT ARTHUR ADDITION

Drawing No.:
C-26



Rev.	Description	Date	By

Drawn by:	CJM	Date:	9/19/2016	Rev.:	
Designed by:	CJM	Scale:	AS SHOWN	Approval Recommended:	
Submitted by:		Approved by:	Chief, Engineering Branch		
Approved by:		Chief, Engineering and Construction Division			

U.S. ARMY ENGINEER DISTRICT, GALVESTON
 CORPS OF ENGINEERS
 GALVESTON, TEXAS

PREPARED UNDER THE DIRECTION OF
 LARS N. ZETTERSTROM, COL, P.E.
 DISTRICT COMMANDER

SABINE TO GALVESTON
 FEASIBILITY STUDY
 (DRAFT PLANS - NOT FOR CONSTRUCTION)

PORT ARTHUR AND VICINITY CSRM
 PLAN - STA 130+61

Drawing No.:

C-27



Rev.	Description	Date	By

Drawn by:	CJM	Date:	9/19/2016	Rev.:	
Designed by:	CJM	Scale:	AS SHOWN	Approval Recommended by:	
Submitted by:				Chief, Engineering Branch	
Approved by:				Chief, Engineering and Construction Division	

U.S. ARMY ENGINEER DISTRICT, GALVESTON
 CORPS OF ENGINEERS
 GALVESTON, TEXAS

PREPARED UNDER THE DIRECTION OF
 LARS N. ZETTERSTROM, COL, P.E.
 DISTRICT COMMANDER

SABINE TO GALVESTON
 FEASIBILITY STUDY
 (DRAFT PLANS - NOT FOR CONSTRUCTION)

PORT ARTHUR AND VICINITY CSRM
 PLAN - STA 290+00 TO 320+00

Drawing No.:

C-28

File: W:\CADD\Projects\Sn\Sabine to Galveston\Appendix sheets\20160729 Port_Arthur.tc.dgn
Model Name: C-29
By: m3ececjm Date: 9/19/2016 Time: 2:08:05 PM



Rev.	Date	Description

Drawn by:	CJM	Date:	9/19/2016	Rev.:	
Designed by:	CJM	Scale:	AS SHOWN	Approval Recommended by:	
Checked by:		Submitted by:		Chief, Engineering Branch	
Approved by:				Chief, Engineering and Construction Division	

U.S. ARMY ENGINEER DISTRICT, GALVESTON
CORPS OF ENGINEERS
GALVESTON, TEXAS

PREPARED UNDER THE DIRECTION OF
LARS N. ZETTERSTROM, COL, P.E.
DISTRICT COMMANDER

SABINE TO GALVESTON
FEASIBILITY STUDY
(DRAFT PLANS - NOT FOR CONSTRUCTION)

PORT ARTHUR AND VICINITY CSRM
PLAN - STA 323+00 TO 359+00

Drawing No.:
C-29

File: W:\CADD\Projects\Sn\Sabine to Galveston\Appendix sheets\20160729 Port_Arthur.tc.dgn
 Model Name: C-30
 By: m3ececjm Date: 9/19/2016 Time: 2:08:23 PM



Rev.	Description	Date	By

Drawn by:	CJM	Date:	9/19/2016	Rev.:	
Designed by:	CJM	Scale:	AS SHOWN	Approval Recommended by:	
Submitted by:		Approved:		Chief, Engineering Branch	
Approved by:		Chief, Engineering and Construction Division			

U.S. ARMY ENGINEER DISTRICT, GALVESTON
 CORPS OF ENGINEERS
 GALVESTON, TEXAS

PREPARED UNDER THE DIRECTION OF
 LARS N. ZETTERSTROM, COL, P.E.
 DISTRICT COMMANDER

SABINE TO GALVESTON
 FEASIBILITY STUDY
 (DRAFT PLANS - NOT FOR CONSTRUCTION)

PORT ARTHUR AND VICINITY CSRM
 PLAN - STA 380+00 TO 408+00

Drawing No.:

C-30

File: W:\CADD\Projects\Sn\Sabine to Galveston\Appendix sheets\20160729 Port_Arthur.tc.dgn
 Model Name: C-31
 By: m3ececjm Date: 9/19/2016 Time: 2:08:39 PM



Rev.	Description	Date	By

Date: 9/19/2016 Rev.
 Scale: AS SHOWN
 Approval Recommended:
 Chief, Engineering Branch
 Chief, Engineering and Construction Division

U.S. ARMY ENGINEER DISTRICT, GALVESTON
 CORPS OF ENGINEERS
 GALVESTON, TEXAS
 PREPARED UNDER THE DIRECTION OF
 LARS N. ZETTERSTROM, COL, P.E.
 DISTRICT COMMANDER

SABINE TO GALVESTON
 FEASIBILITY STUDY
 (DRAFT PLANS - NOT FOR CONSTRUCTION)
 PORT ARTHUR AND VICINITY CSRM
 PLAN - STA 408+00 TO 456+00

Drawing No.:
C-31



Rev.	Description	Date	By

Drawn by:	CJM	Date:	9/19/2016	Rev.:	
Designed by:	CJM	Scale:	AS SHOWN	Approval Recommended:	
Submitted by:		Approved:		Chief, Engineering Branch	
Approved by:		Chief, Engineering and Construction Division			

U.S. ARMY ENGINEER DISTRICT, GALVESTON
 CORPS OF ENGINEERS
 GALVESTON, TEXAS

PREPARED UNDER THE DIRECTION OF
 LARS N. ZETTERSTROM, COL, P.E.
 DISTRICT COMMANDER

SABINE TO GALVESTON
 FEASIBILITY STUDY
 (DRAFT PLANS - NOT FOR CONSTRUCTION)

PORT ARTHUR AND VICINITY CSRM
 PLAN - STA 456+00 TO 505+00

Drawing No.:

C-32



Rev.	Description	Date	By

Drawn by:	CJM	Date:	9/19/2016
Checked by:	CJM	Scale:	AS SHOWN
Submitted by:		Approval Recommended by:	Chief, Engineering Branch
Approved by:		Approved by:	Chief, Engineering and Construction Division

U.S. ARMY ENGINEER DISTRICT, GALVESTON
 CORPS OF ENGINEERS
 GALVESTON, TEXAS

PREPARED UNDER THE DIRECTION OF
 LARS N. ZETTERSTROM, COL, P.E.
 DISTRICT COMMANDER

SABINE TO GALVESTON
 FEASIBILITY STUDY
 (DRAFT PLANS - NOT FOR CONSTRUCTION)
 PORT ARTHUR AND VICINITY CSRM
 PLAN - STA 505+00 TO 545+00

Drawing No.:
C-33



Rev.	Description	Date	By

Drawn by:	CJM	Date:	9/19/2016	Rev.:	
Checked by:	CJM	Scale:	AS SHOWN	Approval Recommended:	
Submitted by:		Approved by:		Chief, Engineering Branch	
				Chief, Engineering and Construction Division	

U.S. ARMY ENGINEER DISTRICT, GALVESTON
 CORPS OF ENGINEERS
 GALVESTON, TEXAS

PREPARED UNDER THE DIRECTION OF
 LARS N. ZETTERSTROM, COL, P.E.
 DISTRICT COMMANDER

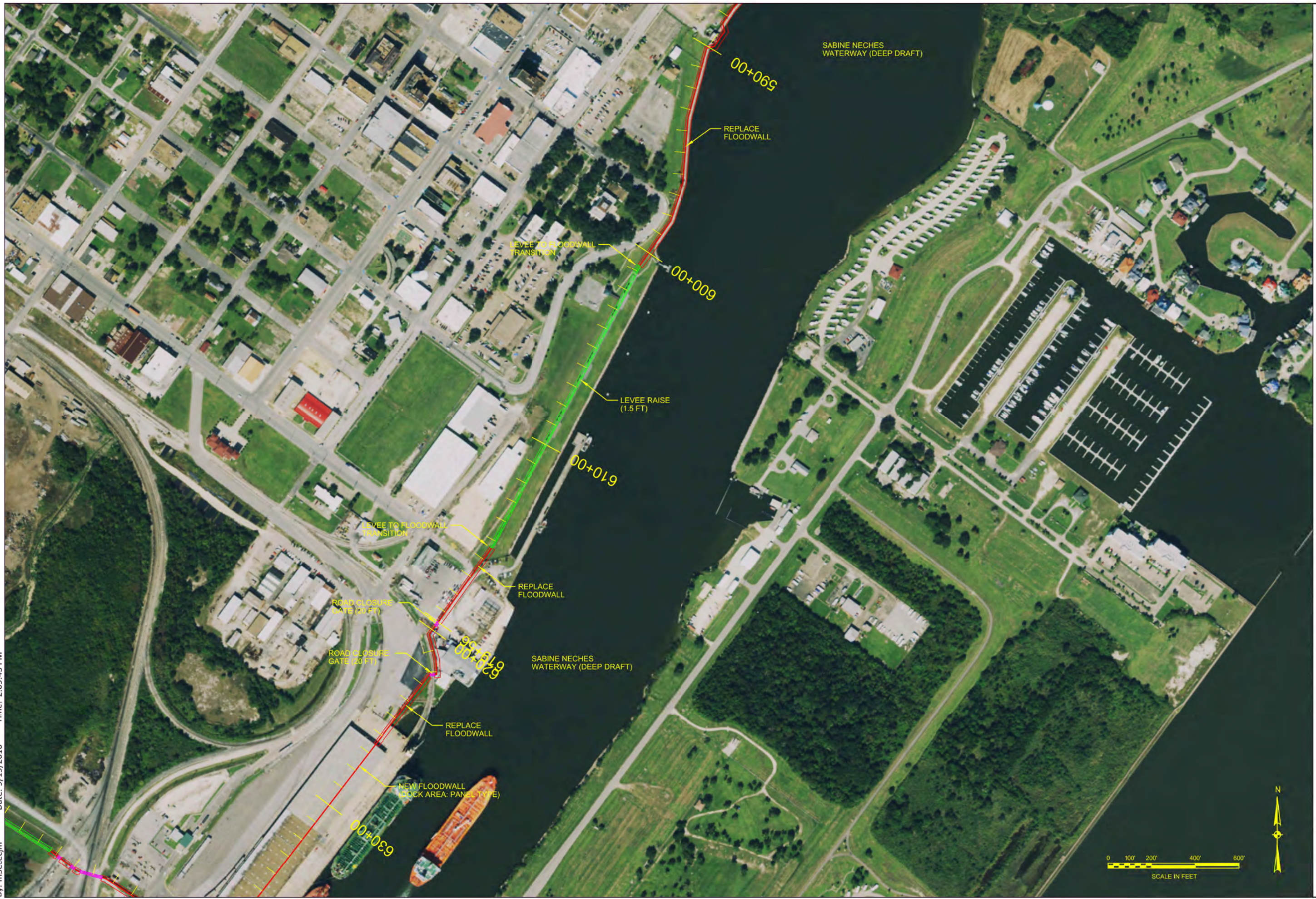
SABINE TO GALVESTON
 FEASIBILITY STUDY
 (DRAFT PLANS - NOT FOR CONSTRUCTION)

PORT ARTHUR AND VICINITY CSRM
 PLAN - STA 545+00 TO 593+00

Drawing No.:

C-34

File: W:\CADD\Projects\Sn\Sabine to Galveston\Appendix sheets\20160729 Port_Arthur.tc.dgn
 Model Name: C-35
 By: m3ececjm Date: 9/19/2016 Time: 2:09:43 PM



Rev.	Description	Date	By

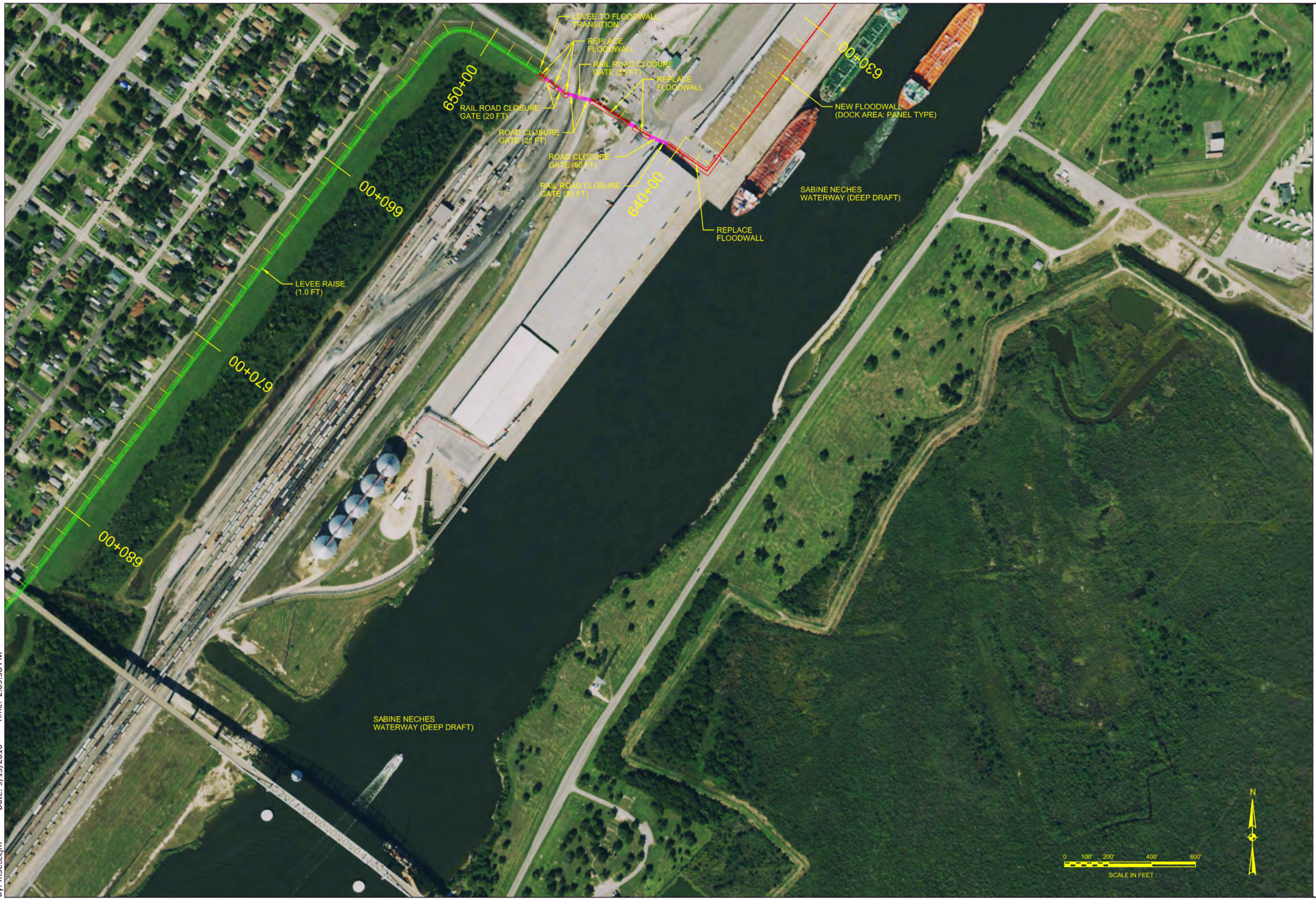
Date: 9/19/2016 Rev.
 Scale: AS SHOWN
 Approval Recommended by:
 Chief, Engineering Branch
 Approved by:
 Chief, Engineering and Construction Division

U.S. ARMY ENGINEER DISTRICT, GALVESTON
 CORPS OF ENGINEERS
 GALVESTON, TEXAS
 PREPARED UNDER THE DIRECTION OF
 LARS N. ZETTERSTROM, COL, P.E.
 DISTRICT COMMANDER

SABINE TO GALVESTON
 FEASIBILITY STUDY
 (DRAFT PLANS - NOT FOR CONSTRUCTION)
 PORT ARTHUR AND VICINITY CSRM
 PLAN - STA 593+00 TO 630+00

Drawing No.:
C-35

File: W:\CADD\Projects\Sn\Sabine to Galveston\Appendix sheets\20160729 Port_Arthur.tc.dgn
 Model Name: C-36
 By: m3ececjm Date: 9/19/2016 Time: 2:09:58 PM



Rev.	Description	Date	By

Drawn by:	CJM	Date:	9/19/2016	Rev.:	
Designed by:	CJM	Scale:	AS SHOWN	Approval Recommended:	
Submitted by:		Approved:		Chief, Engineering Branch	
Approved by:		Chief, Engineering and Construction Division			

U.S. ARMY ENGINEER DISTRICT, GALVESTON
 CORPS OF ENGINEERS
 GALVESTON, TEXAS

PREPARED UNDER THE DIRECTION OF
 LARS N. ZETTERSTROM, COL, P.E.
 DISTRICT COMMANDER

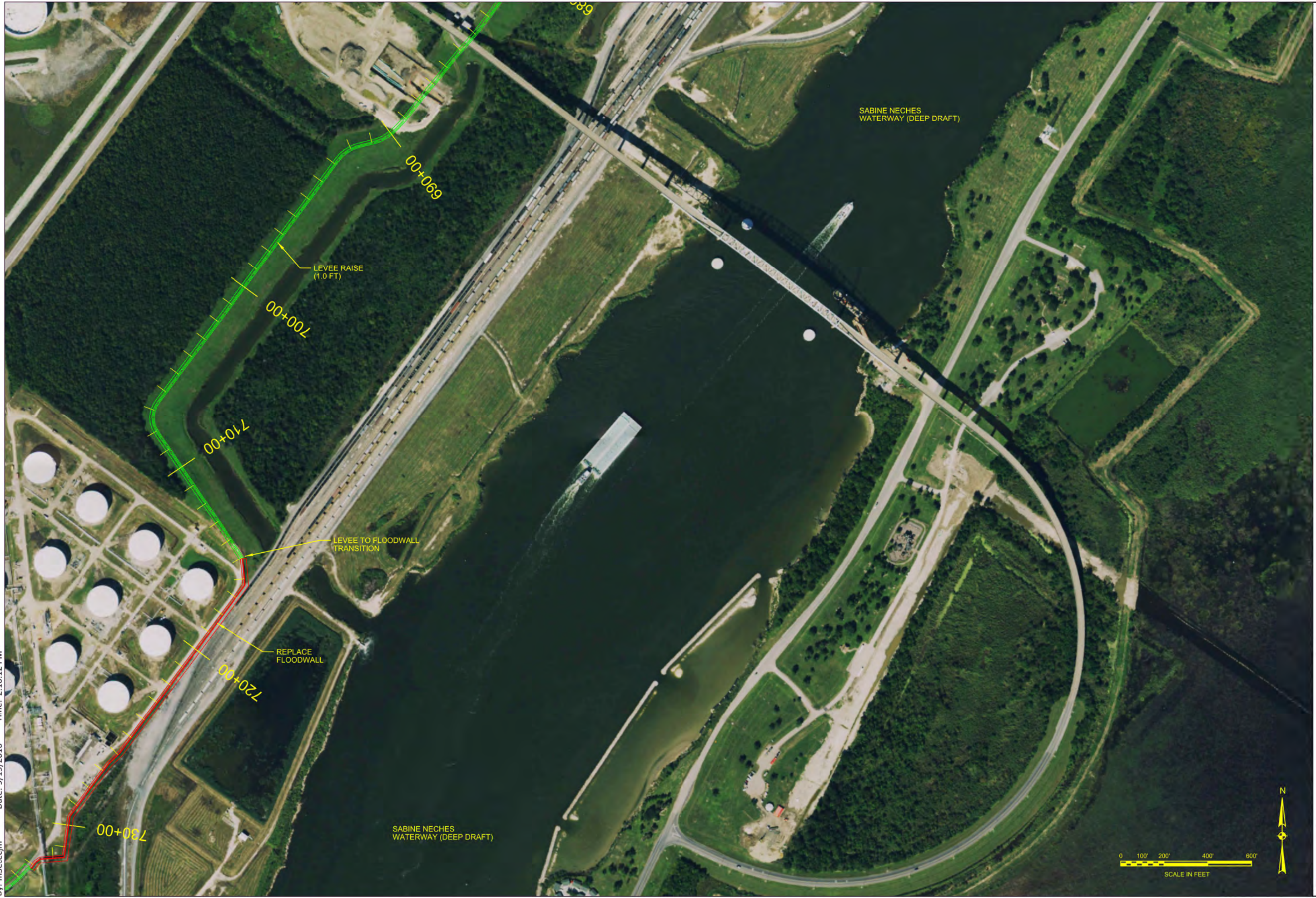
SABINE TO GALVESTON
 FEASIBILITY STUDY
 (DRAFT PLANS - NOT FOR CONSTRUCTION)

PORT ARTHUR AND VICINITY CSRM
 PLAN - STA 630+00 TO 685+00

Drawing No.:

C-36

File: W:\CADD\Projects\Sn\Sabine to Galveston\Appendix sheets\20160729 Port_Arthur.tc.dgn
 Model Name: C-37
 By: m3ececjm Date: 9/19/2016 Time: 2:10:12 PM



Rev.	Description	Date	By

Drawn by:	CJM	Date:	9/19/2016	Rev.:
Designed by:	CJM	Scale:	AS SHOWN	
Submitted by:		Approval Recommended:		
Approved by:		Chief, Engineering Branch		
		Chief, Engineering and Construction Division		

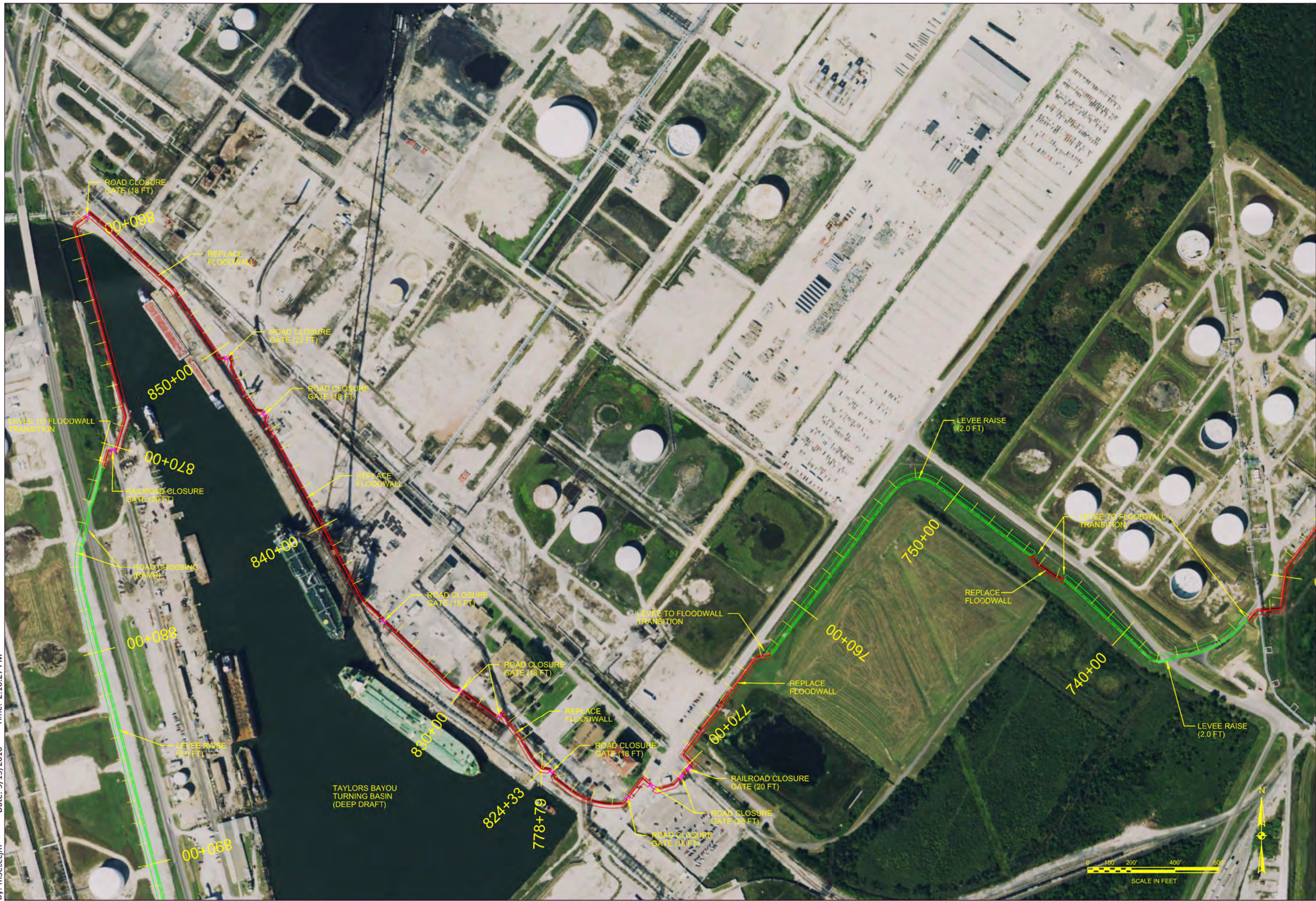
U.S. ARMY ENGINEER DISTRICT, GALVESTON
 CORPS OF ENGINEERS
 GALVESTON, TEXAS
 PREPARED UNDER THE DIRECTION OF
 LARS N. ZETTERSTROM, COL, P.E.
 DISTRICT COMMANDER

SABINE TO GALVESTON
 FEASIBILITY STUDY
 (DRAFT PLANS - NOT FOR CONSTRUCTION)
 PORT ARTHUR AND VICINITY CSRM
 PLAN - STA 695+00 TO 734+00

Drawing No.:
C-37

File: W:\CADD\Projects\Sn\Sabine to Galveston\Appendix sheets\20160729 Port_Arthur.tc.dgn
 Model Name: C-38
 By: m3ececjm

Date: 9/19/2016 Time: 2:10:27 PM



Rev.	Description	Date	By

Date: 9/19/2016 Rev.
 Scale: AS SHOWN
 Approval Recommended by: Chief, Engineering Branch
 Approved by: Chief, Engineering and Construction Division

U.S. ARMY ENGINEER DISTRICT, GALVESTON
 CORPS OF ENGINEERS
 GALVESTON, TEXAS
 PREPARED UNDER THE DIRECTION OF
 LARS N. ZETTERSTROM, COL, P.E.
 DISTRICT COMMANDER

SABINE TO GALVESTON
 FEASIBILITY STUDY
 (DRAFT PLANS - NOT FOR CONSTRUCTION)
 PORT ARTHUR AND VICINITY CSRM
 PLAN - STA 734+00 TO 880+00

Drawing No.:
C-38



Rev.	Description	Date	By

Drawn by:	CJM	Date:	9/19/2016	Rev.:	
Designed by:	CJM	Scale:	AS SHOWN	Approval Recommended by:	
Submitted by:		Approved:		Chief, Engineering Branch	
Approved by:		Chief, Engineering and Construction Division			

U.S. ARMY ENGINEER DISTRICT, GALVESTON
 CORPS OF ENGINEERS
 GALVESTON, TEXAS

PREPARED UNDER THE DIRECTION OF
 LARS N. ZETTERSTROM, COL, P.E.
 DISTRICT COMMANDER

SABINE TO GALVESTON
 FEASIBILITY STUDY
 (DRAFT PLANS - NOT FOR CONSTRUCTION)

PORT ARTHUR AND VICINITY CSR/CSRM
 PLAN - STA 890+00 TO 969+00

Drawing No.:
C-39



Rev.	Date	Description

Drawn by: C:JM	Date: 9/19/2016	Rev.
Designed by: C:JM	Scale: AS SHOWN	
Checked by:	Approval Recommended by:	
Submitted by:	Chief, Engineering Branch	
Approved by:	Chief, Engineering and Construction Division	

U.S. ARMY ENGINEER DISTRICT, GALVESTON
 CORPS OF ENGINEERS
 GALVESTON, TEXAS

PREPARED UNDER THE DIRECTION OF
 LARS N. ZETTERSTROM, COL, P.E.
 DISTRICT COMMANDER

**SABINE TO GALVESTON
 FEASIBILITY STUDY
 (DRAFT PLANS - NOT FOR CONSTRUCTION)**

PORT ARTHUR AND VICINITY CSRM
 PLAN - STA 969+00 TO 10005+00

Drawing No.:
C-40

File: W:\CADD\Projects\Sn\Sabine to Galveston\Appendix sheets\20160729 Port_Arthur.tc.dgn
 Model Name: C-41
 By: m3ececjm Date: 9/19/2016 Time: 2:11:08 PM



Rev.	Description	Date	By

Date: 9/19/2016 Rev. Scale: AS SHOWN
 Drawn by: C:JM Described by: C:JM
 Checked by: Approved: Chief, Engineering Branch
 Submitted by: Approved by: Chief, Engineering and Construction Division

U.S. ARMY ENGINEER DISTRICT, GALVESTON
 CORPS OF ENGINEERS
 GALVESTON, TEXAS
 PREPARED UNDER THE DIRECTION OF
 LARS N. ZETTERSTROM, COL, P.E.
 DISTRICT COMMANDER

SABINE TO GALVESTON
 FEASIBILITY STUDY
 (DRAFT PLANS - NOT FOR CONSTRUCTION)
 PORT ARTHUR AND VICINITY CSRM
 PLAN - ALLIGATOR BAYOU PUMP STATION

Drawing No.:
C-41



Rev.	Date	Description	By

Drawn by:	CJM	Date:	9/19/2016	Rev.:	
Designed by:	CJM	Scale:	AS SHOWN	Approval:	AS SHOWN
Checked by:		Submitted by:		Approval:	
Submitted by:		Approved by:		Chief, Engineering Branch	
Approved by:		Chief, Engineering and Construction Division			

U.S. ARMY ENGINEER DISTRICT, GALVESTON
 CORPS OF ENGINEERS
 GALVESTON, TEXAS

PREPARED UNDER THE DIRECTION OF
 LARS N. ZETTERSTROM, COL, P.E.
 DISTRICT COMMANDER

SABINE TO GALVESTON
 FEASIBILITY STUDY
 (DRAFT PLANS - NOT FOR CONSTRUCTION)

PORT ARTHUR AND VICINITY CSRM
 PLAN - LAKESIDE PUMP STATION

Drawing No.:
C-42



Rev.	Description	Date	By

Date: 9/19/2016 Rev.
 Scale: AS SHOWN
 Approval Recommended by:
 Chief, Engineering Branch
 Approved by:
 Chief, Engineering and Construction Division

U.S. ARMY ENGINEER DISTRICT, GALVESTON
 CORPS OF ENGINEERS
 GALVESTON, TEXAS
 PREPARED UNDER THE DIRECTION OF
 LARS N. ZETTERSTROM, COL, P.E.
 DISTRICT COMMANDER

SABINE TO GALVESTON
 FEASIBILITY STUDY
 (DRAFT PLANS - NOT FOR CONSTRUCTION)
 PORT ARTHUR AND VICINITY CSRM
 PLAN - PORT ACRES PUMP STATION
 AND HWY 73 CLOSURE

Drawing No.:
C-43