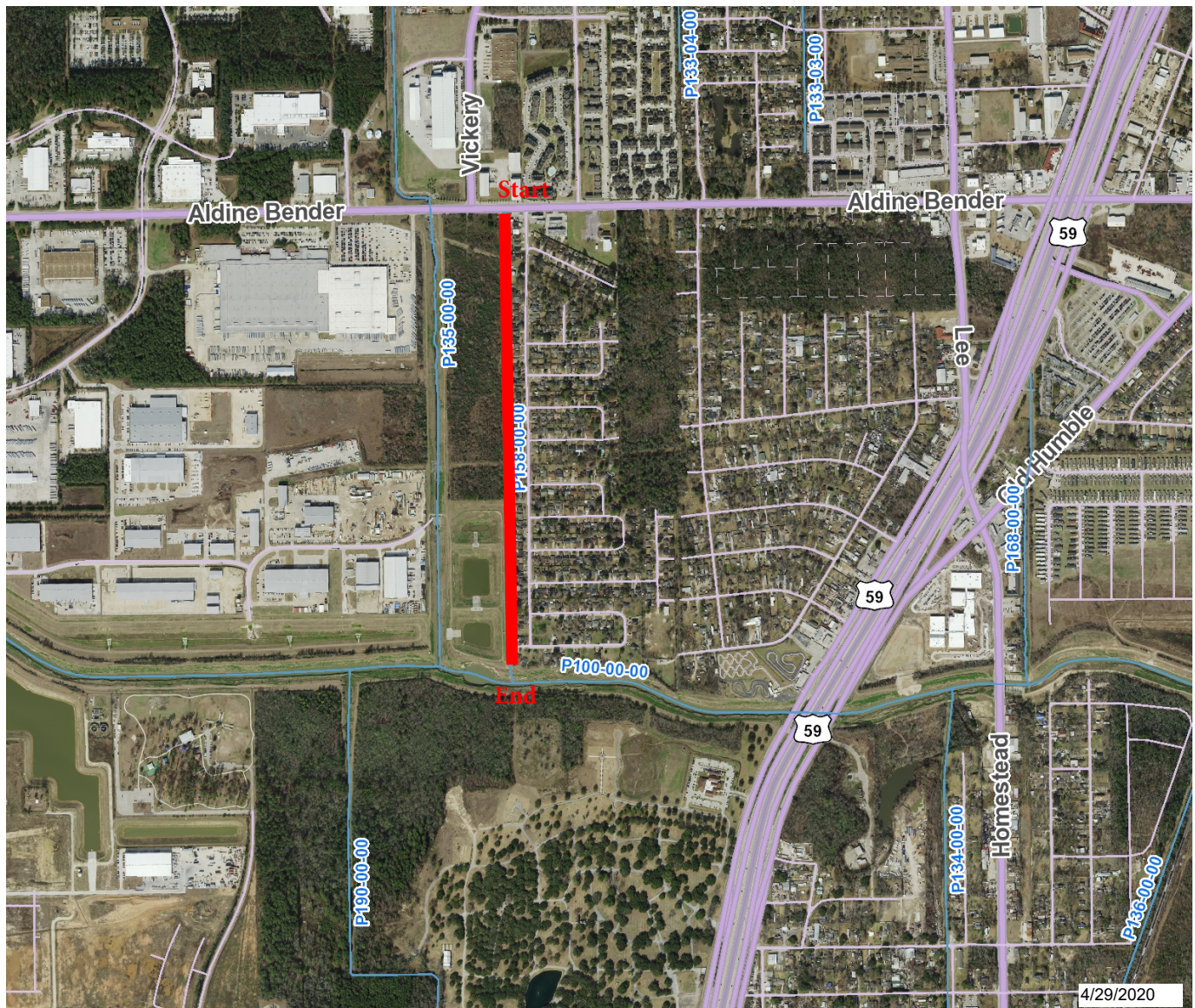




2018 Aerial Map for P158-00-00



4/29/2020

Legend

Channel System

- OPEN
- STORM SEWER
- HISTORICAL

STAR*Map® Labels

STAR*Map® Roadways

- FREEWAY
- FRONTAGE
- TOLLWAY
- HOV
- RAMP
- MAJOR
- LOCAL

County Vicinity Map



Notes

Channel starts at Aldine Bender Rd (29.929951, -95.315329) and ends at the confluence with P100-00-00 (Greens Bayou) (29.919604, -95.315226).

The roadway data used in this map are derived from the STAR*Map®. STAR*Map is a registered trademark of the Houston-Galveston Area Council and the Geographic Data Committee.

Key Map® and the Key Map Unique Grid® are registered trademarks of Key Maps, Inc. and are protected by Federal Trademark law. Any use of the Key Map Unique Grid must have the written authorization of Key Maps, Inc.

1: 18,056

ft





**U.S. ARMY CORPS OF ENGINEERS
REGULATORY PROGRAM
APPROVED JURISDICTIONAL DETERMINATION FORM (INTERIM)
NAVIGABLE WATERS PROTECTION RULE**

I. ADMINISTRATIVE INFORMATION

Completion Date of Approved Jurisdictional Determination (AJD): 8/17/2020

ORM Number: SWG-2020-00301

Associated JDs: N/A

Review Area Location¹: State/Territory: Texas City: Houston County/Parish/Borough: Harris

Center Coordinates of Review Area: Latitude 29.924615° Longitude -95.315308°

II. FINDINGS

A. Summary: Check all that apply. At least one box from the following list MUST be selected. Complete the corresponding sections/tables and summarize data sources.

- ☐ The review area is comprised entirely of dry land (i.e., there are no waters or water features, including wetlands, of any kind in the entire review area). Rationale: N/A or describe rationale.
- ☐ There are "navigable waters of the United States" within Rivers and Harbors Act jurisdiction within the review area (complete table in Section II.B).
- ☐ There are "waters of the United States" within Clean Water Act jurisdiction within the review area (complete appropriate tables in Section II.C).
- ☒ There are waters or water features excluded from Clean Water Act jurisdiction within the review area (complete table in Section II.D).

B. Rivers and Harbors Act of 1899 Section 10 (§ 10)²

§ 10 Name	§ 10 Size	§ 10 Criteria	Rationale for § 10 Determination
N/A.	N/A.	N/A.	N/A.

C. Clean Water Act Section 404

Territorial Seas and Traditional Navigable Waters ((a)(1) waters): ³				
(a)(1) Name	(a)(1) Size	(a)(1) Criteria	Rationale for (a)(1) Determination	
N/A.	N/A.	N/A.	N/A.	

Tributaries ((a)(2) waters):				
(a)(2) Name	(a)(2) Size	(a)(2) Criteria	Rationale for (a)(2) Determination	
N/A.	N/A.	N/A.	N/A.	

Lakes and ponds, and impoundments of jurisdictional waters ((a)(3) waters):				
(a)(3) Name	(a)(3) Size	(a)(3) Criteria	Rationale for (a)(3) Determination	
N/A.	N/A.	N/A.	N/A.	

Adjacent wetlands ((a)(4) waters):				
(a)(4) Name	(a)(4) Size	(a)(4) Criteria	Rationale for (a)(4) Determination	
N/A.	N/A.	N/A.	N/A.	

¹ Map(s)/figure(s) are attached to the AJD provided to the requestor.

² If the navigable water is not subject to the ebb and flow of the tide or included on the District's list of Rivers and Harbors Act Section 10 navigable waters list, do NOT use this document to make the determination. The District must continue to follow the procedure outlined in 33 CFR part 329.14 to make a Rivers and Harbors Act Section 10 navigability determination.

³ A stand-alone TNW determination is completed independently of a request for an AJD. A stand-alone TNW determination is conducted for a specific segment of river or stream or other type of waterbody, such as a lake, where upstream or downstream limits or lake borders are established. A stand-alone TNW determination should be completed following applicable guidance and should NOT be documented on the AJD Form.



**U.S. ARMY CORPS OF ENGINEERS
REGULATORY PROGRAM
APPROVED JURISDICTIONAL DETERMINATION FORM (INTERIM)
NAVIGABLE WATERS PROTECTION RULE**

D. Excluded Waters or Features

Excluded waters ((b)(1) – (b)(12)): ⁴				
Exclusion Name	Exclusion Size		Exclusion ⁵	Rationale for Exclusion Determination
P158-00-00 (upland Drainage Ditch)	3,764	linear feet	(b)(5) Ditch that is not an (a)(1) or (a)(2) water, and those portions of a ditch constructed in an (a)(4) water that do not satisfy the conditions of (c)(1).	The review area contains an upland cut, man-made drainage ditch (HCFCD P158-00-00) not constructed in a (c)(1) or (a)(4). This ditch does not extend the ordinary high watermark of Greens Bayou. This ditch is not a water of the US.

III. SUPPORTING INFORMATION

A. Select/enter all resources that were used to aid in this determination and attach data/maps to this document and/or references/citations in the administrative record, as appropriate.

- ☒ Information submitted by, or on behalf of, the applicant/consultant: [Request for AJD, dated 4 May 2020](#)
This information [is](#) sufficient for purposes of this AJD.
Rationale: [N/A](#)
- ☐ Data sheets prepared by the Corps: [Title\(s\) and/or date\(s\)](#).
- ☒ Photographs: [Aerial and Other: See Below; Request for AJD, dated 4 May 2020](#)
- ☐ Corps site visit(s) conducted on: [Date\(s\)](#).
- ☐ Previous Jurisdictional Determinations (AJDs or PJDs): [ORM Number\(s\) and date\(s\)](#).
- ☐ Antecedent Precipitation Tool: [provide detailed discussion in Section III.B.](#)
- ☒ USDA NRCS Soil Survey: [See Below - Web Soil Survey; 17 August 2020](#)
- ☒ USFWS NWI maps: [Humble, Texas; 1:24,000](#)
- ☒ USGS topographic maps: [See Below; Humble, Texas; 1:24,000](#)

Other data sources used to aid in this determination:

Data Source (select)	Name and/or date and other relevant information
USGS Sources	1-foot contour map, 2018; (Topo) 1920, 2019
USDA Sources	Texla-Urban land complex (non-hydric soil 67% of area)
NOAA Sources	N/A.
USACE Sources	ORM overlay: USFWS NWI map
State/Local/Tribal Sources	STAR Maps: (Historic Aerial maps) 1930, 1944, 1956, 1964, 1972, 1981, 1995, 2004, 2012, and 2018 Floodplain
FEMA/FIRM maps	2018

B. Typical year assessment(s): [N/A](#)

C. Additional comments to support AJD: [N/A](#)

⁴ Some excluded waters, such as (b)(2) and (b)(4), may not be specifically identified on the AJD form unless a requestor specifically asks a Corps district to do so. Corps districts may, in case-by-case instances, choose to identify some or all of these waters within the review area.

⁵ Because of the broad nature of the (b)(1) exclusion and in an effort to collect data on specific types of waters that would be covered by the (b)(1) exclusion, four sub-categories of (b)(1) exclusions were administratively created for the purposes of the AJD Form. These four sub-categories are not new exclusions, but are simply administrative distinctions and remain (b)(1) exclusions as defined by the NWPR.