



**U.S. ARMY CORPS OF ENGINEERS
REGULATORY PROGRAM
APPROVED JURISDICTIONAL DETERMINATION FORM (INTERIM)
NAVIGABLE WATERS PROTECTION RULE**

I. ADMINISTRATIVE INFORMATION

Completion Date of Approved Jurisdictional Determination (AJD): 2/23/2021
 ORM Number: SWG-2020-00676
 Associated JDs: N/A
 Review Area Location¹: State/Territory: Texas City: Houston County/Parish/Borough: Harris
 Center Coordinates of Review Area: Latitude 29.817532° Longitude -95.574773°

II. FINDINGS

A. Summary: Check all that apply. At least one box from the following list MUST be selected. Complete the corresponding sections/tables and summarize data sources.

- The review area is comprised entirely of dry land (i.e., there are no waters or water features, including wetlands, of any kind in the entire review area). Rationale: N/A or describe rationale.
- There are “navigable waters of the United States” within Rivers and Harbors Act jurisdiction within the review area (complete table in Section II.B).
- There are “waters of the United States” within Clean Water Act jurisdiction within the review area (complete appropriate tables in Section II.C).
- There are waters or water features excluded from Clean Water Act jurisdiction within the review area (complete table in Section II.D).

B. Rivers and Harbors Act of 1899 Section 10 (§ 10)²

§ 10 Name	§ 10 Size	§ 10 Criteria	Rationale for § 10 Determination
N/A.	N/A.	N/A.	N/A.

C. Clean Water Act Section 404

Territorial Seas and Traditional Navigable Waters ((a)(1) waters): ³			
(a)(1) Name	(a)(1) Size	(a)(1) Criteria	Rationale for (a)(1) Determination
N/A.	N/A.	N/A.	N/A.

Tributaries ((a)(2) waters):			
(a)(2) Name	(a)(2) Size	(a)(2) Criteria	Rationale for (a)(2) Determination
N/A.	N/A.	N/A.	N/A.

Lakes and ponds, and impoundments of jurisdictional waters ((a)(3) waters):			
(a)(3) Name	(a)(3) Size	(a)(3) Criteria	Rationale for (a)(3) Determination
N/A.	N/A.	N/A.	N/A.

Adjacent wetlands ((a)(4) waters):			
(a)(4) Name	(a)(4) Size	(a)(4) Criteria	Rationale for (a)(4) Determination
N/A.	N/A.	N/A.	N/A.

¹ Map(s)/figure(s) are attached to the AJD provided to the requestor.

² If the navigable water is not subject to the ebb and flow of the tide or included on the District’s list of Rivers and Harbors Act Section 10 navigable waters list, do NOT use this document to make the determination. The District must continue to follow the procedure outlined in 33 CFR part 329.14 to make a Rivers and Harbors Act Section 10 navigability determination.

³ A stand-alone TNW determination is completed independently of a request for an AJD. A stand-alone TNW determination is conducted for a specific segment of river or stream or other type of waterbody, such as a lake, where upstream or downstream limits or lake borders are established. A stand-alone TNW determination should be completed following applicable guidance and should NOT be documented on the AJD Form.



**U.S. ARMY CORPS OF ENGINEERS
REGULATORY PROGRAM
APPROVED JURISDICTIONAL DETERMINATION FORM (INTERIM)
NAVIGABLE WATERS PROTECTION RULE**

D. Excluded Waters or Features

Excluded waters ((b)(1) – (b)(12)): ⁴				
Exclusion Name	Exclusion Size	Exclusion ⁵	Rationale for Exclusion Determination	
W167-04-00 and W167-00-00 (upland Drainage Ditches)	39,690 and 3,208	linear feet	(b)(5) Ditch that is not an (a)(1) or (a)(2) water, and those portions of a ditch constructed in an (a)(4) water that do not satisfy the conditions of (c)(1).	The review area contains two upland cut, man-made drainage ditches (HCFCD W167-04-00 and W167-00-00) that were not constructed in a (c)(1) or (a)(4). Turkey Creek has been redirected to the west and separated from W167-00-00 a berm in the Addicks Reservoir. It does not connect to W167-00-00 at the lower portion of the project area. These ditches do not extend the ordinary high watermark of Turkey Creek. These ditches are not a waters of the US.

III. SUPPORTING INFORMATION

A. Select/enter all resources that were used to aid in this determination and attach data/maps to this document and/or references/citations in the administrative record, as appropriate.

- Information submitted by, or on behalf of, the applicant/consultant: [Request for AJD, dated 22 September 2020](#)

This information is sufficient for purposes of this AJD.

Rationale: [N/A](#)

- Data sheets prepared by the Corps: [Title\(s\) and/or date\(s\)](#).
- Photographs: [Aerial and Other: See Below - Request for AJD, dated 22 September 2020](#)
- Corps site visit(s) conducted on: [Date\(s\)](#).
- Previous Jurisdictional Determinations (AJDs or PJDs): [N/A](#)
- Antecedent Precipitation Tool: [provide detailed discussion in Section III.B.](#)
- USDA NRCS Soil Survey: [Title\(s\) and/or date\(s\)](#).
- USFWS NWI maps: [Title\(s\) and/or date\(s\)](#).
- USGS topographic maps: [See Below; Hedwig Village,, Texas; 1:72,224](#)

Other data sources used to aid in this determination:

Data Source (select)	Name and/or date and other relevant information
USGS Sources	Topo: 1920 and 2019
USDA Sources	N/A
NOAA Sources	N/A.
USACE Sources	N/A.
State/Local/Tribal Sources	Historic Aerial maps: 1944, 1953, 1972, 1999, and 2020
FEMA/FIRM maps	2019 Floodplain

B. Typical year assessment(s): [N/A](#)

⁴ Some excluded waters, such as (b)(2) and (b)(4), may not be specifically identified on the AJD form unless a requestor specifically asks a Corps district to do so. Corps districts may, in case-by-case instances, choose to identify some or all of these waters within the review area.

⁵ Because of the broad nature of the (b)(1) exclusion and in an effort to collect data on specific types of waters that would be covered by the (b)(1) exclusion, four sub-categories of (b)(1) exclusions were administratively created for the purposes of the AJD Form. These four sub-categories are not new exclusions, but are simply administrative distinctions and remain (b)(1) exclusions as defined by the NWPR.

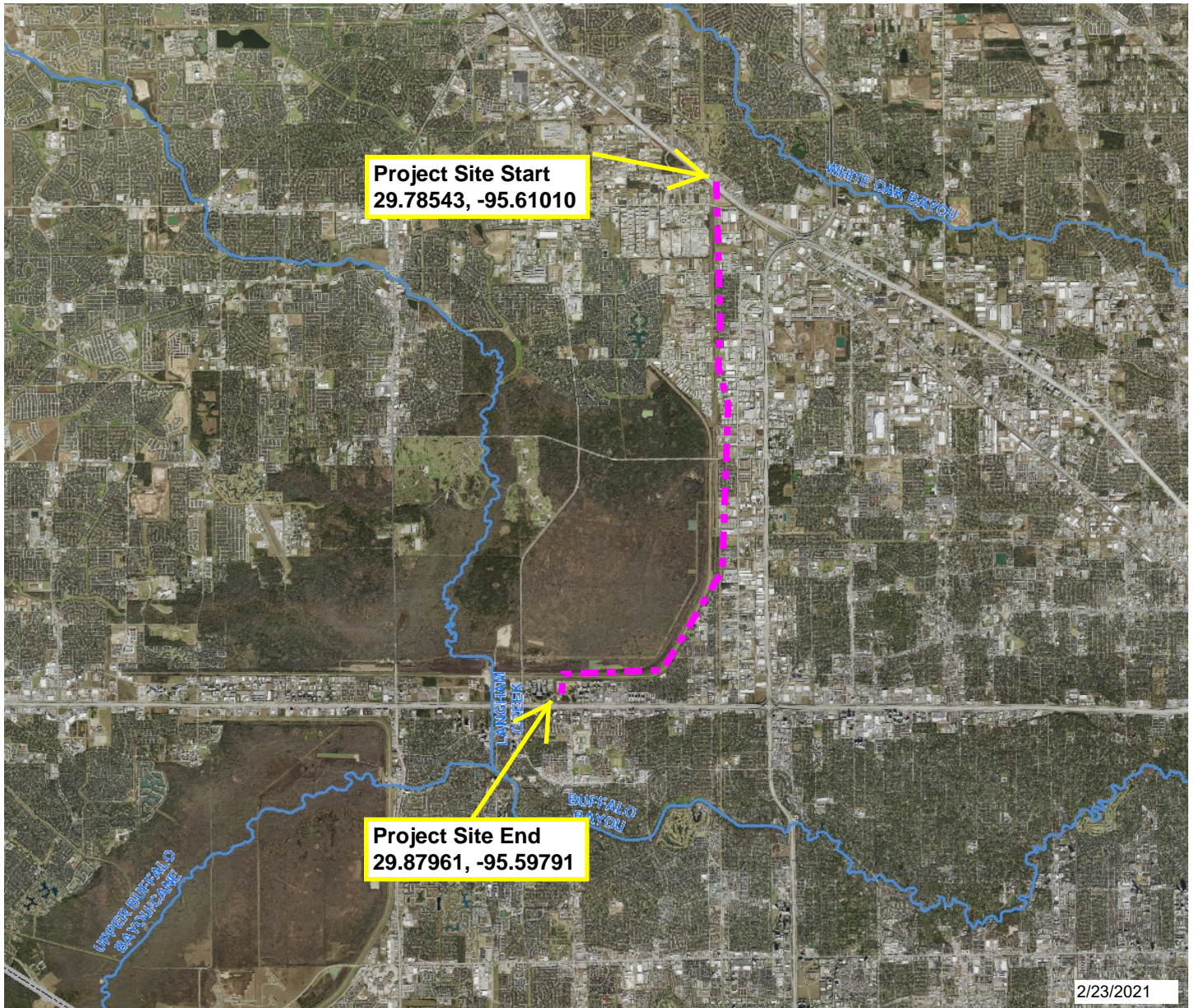


**U.S. ARMY CORPS OF ENGINEERS
REGULATORY PROGRAM
APPROVED JURISDICTIONAL DETERMINATION FORM (INTERIM)
NAVIGABLE WATERS PROTECTION RULE**

C. Additional comments to support AJD: [N/A](#)



Aerial Photograph (2020)



Legend

- Major Channels
- Citations
- Project Limits

County Vicinity Map



Notes

HCFC Unit ID Nos. W167-04-00 and W167-00-00

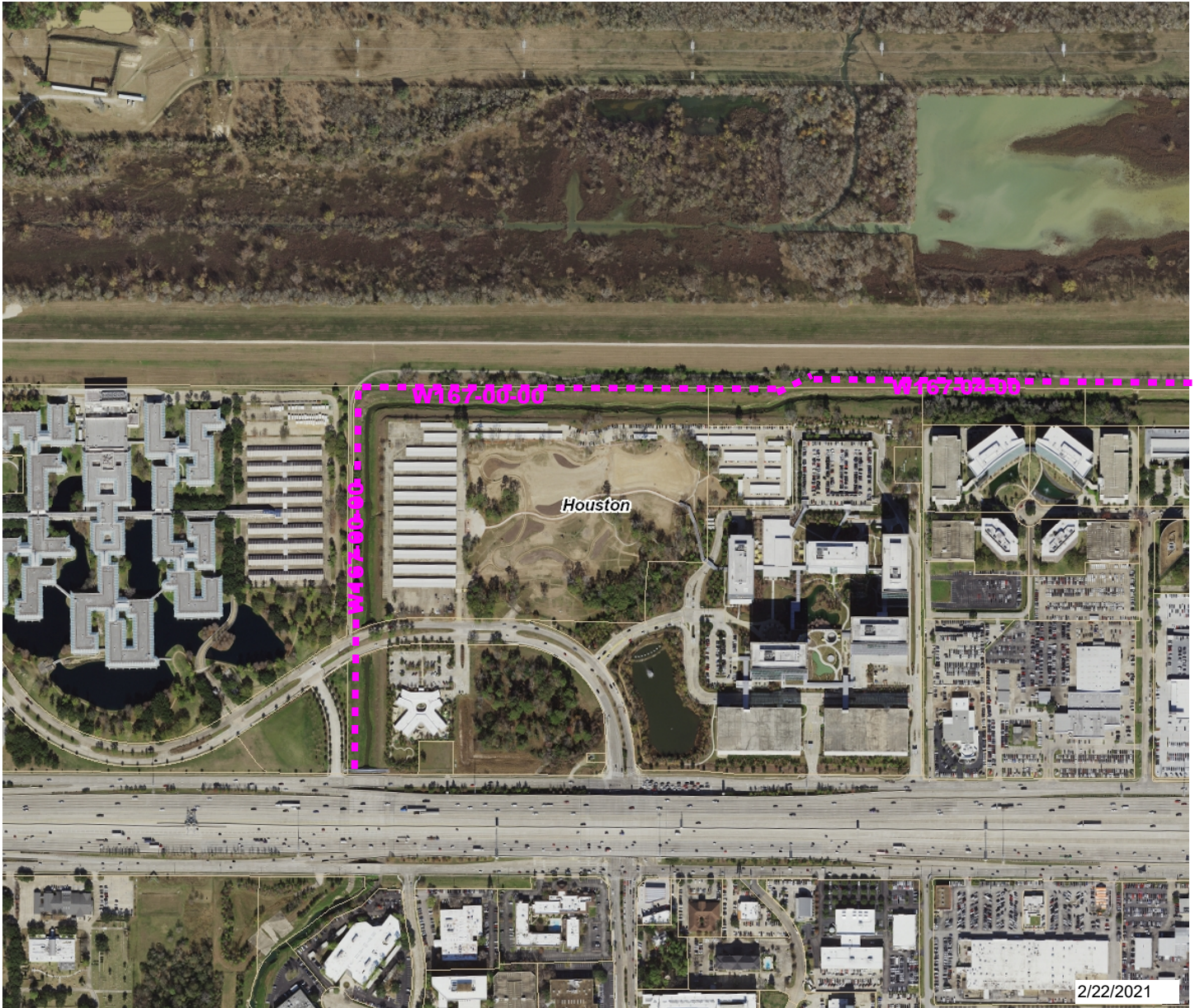
The roadway data used in this map are derived from the STAR[®] Map[®]. STAR[®] Map is a registered trademark of the Houston-Galveston Area Council and the Geographic Data Committee.

Key Map[®] and the Key Map Unique Grid[®] are registered trademarks of Key Maps, Inc. and are protected by Federal Trademark law. Any use of the Key Map Unique Grid must have the written authorization of Key Maps, Inc.

1: 144,448 ft



Aerial Photography (2020) at Downstream End



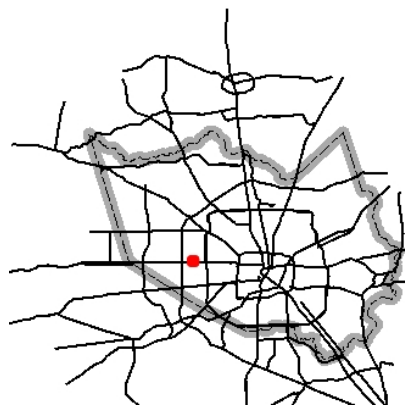
2/22/2021

Legend

- Parcels - Harris County
- City Limits
- County Outlines
- Citations

Proposed Project

County Vicinity Map



Notes

HCFC Unit ID Nos. W167-04-00 and W167-00-00

The roadway data used in this map are derived from the STAR® Map®, STAR® Map is a registered trademark of the Houston-Galveston Area Council and the Geographic Data Committee.

Key Map® and the Key Map Unique Grid® are registered trademarks of Key Maps, Inc. and are protected by Federal Trademark law. Any use of the Key Map Unique Grid must have the written authorization of Key Maps, Inc

1:9,028

ft