



**U.S. ARMY CORPS OF ENGINEERS
REGULATORY PROGRAM
APPROVED JURISDICTIONAL DETERMINATION FORM (INTERIM)
NAVIGABLE WATERS PROTECTION RULE**

I. ADMINISTRATIVE INFORMATION

Completion Date of Approved Jurisdictional Determination (AJD): 2/4/2021

ORM Number: SWG-2020-00680

Associated JDs: N/A

Review Area Location¹: State/Territory: Texas City: Houston County/Parish/Borough: Harris

Center Coordinates of Review Area: Latitude 29.30845535 Longitude -95.44093856

II. FINDINGS

A. Summary: Check all that apply. At least one box from the following list **MUST** be selected. Complete the corresponding sections/tables and summarize data sources.

- ☐ The review area is comprised entirely of dry land (i.e., there are no waters or water features, including wetlands, of any kind in the entire review area). Rationale: N/A or describe rationale.
- ☐ There are "navigable waters of the United States" within Rivers and Harbors Act jurisdiction within the review area (complete table in Section II.B).
- ☐ There are "waters of the United States" within Clean Water Act jurisdiction within the review area (complete appropriate tables in Section II.C).
- ☒ There are waters or water features excluded from Clean Water Act jurisdiction within the review area (complete table in Section II.D).

B. Rivers and Harbors Act of 1899 Section 10 (§ 10)²

| § 10 Name | § 10 Size | § 10 Criteria | Rationale for § 10 Determination |
|-----------|-----------|---------------|----------------------------------|
| N/A. | N/A. | N/A. | N/A. |

C. Clean Water Act Section 404

| Territorial Seas and Traditional Navigable Waters ((a)(1) waters): ³ | | | |
|---|-------------|-----------------|------------------------------------|
| (a)(1) Name | (a)(1) Size | (a)(1) Criteria | Rationale for (a)(1) Determination |
| N/A. | N/A. | N/A. | N/A. |

| Tributaries ((a)(2) waters): | | | |
|------------------------------|-------------|-----------------|------------------------------------|
| (a)(2) Name | (a)(2) Size | (a)(2) Criteria | Rationale for (a)(2) Determination |
| N/A. | N/A. | N/A. | N/A. |

| Lakes and ponds, and impoundments of jurisdictional waters ((a)(3) waters): | | | |
|---|-------------|-----------------|------------------------------------|
| (a)(3) Name | (a)(3) Size | (a)(3) Criteria | Rationale for (a)(3) Determination |
| N/A. | N/A. | N/A. | N/A. |

| Adjacent wetlands ((a)(4) waters): | | | |
|------------------------------------|-------------|-----------------|------------------------------------|
| (a)(4) Name | (a)(4) Size | (a)(4) Criteria | Rationale for (a)(4) Determination |
| N/A. | N/A. | N/A. | N/A. |

¹ Map(s)/figure(s) are attached to the AJD provided to the requestor.

² If the navigable water is not subject to the ebb and flow of the tide or included on the District's list of Rivers and Harbors Act Section 10 navigable waters list, do NOT use this document to make the determination. The District must continue to follow the procedure outlined in 33 CFR part 329.14 to make a Rivers and Harbors Act Section 10 navigability determination.

³ A stand-alone TNW determination is completed independently of a request for an AJD. A stand-alone TNW determination is conducted for a specific segment of river or stream or other type of waterbody, such as a lake, where upstream or downstream limits or lake borders are established. A stand-alone TNW determination should be completed following applicable guidance and should NOT be documented on the AJD Form.



**U.S. ARMY CORPS OF ENGINEERS
REGULATORY PROGRAM
APPROVED JURISDICTIONAL DETERMINATION FORM (INTERIM)
NAVIGABLE WATERS PROTECTION RULE**

D. Excluded Waters or Features

| Excluded waters ((b)(1) – (b)(12)): ⁴ | | | | |
|--|----------------|-------------|--|--|
| Exclusion Name | Exclusion Size | | Exclusion ⁵ | Rationale for Exclusion Determination |
| Water 1A (C144-00-00-outfall) | 5 | linear feet | (b)(10) Stormwater control feature constructed or excavated in upland or in a non-jurisdictional water to convey, treat, infiltrate, or store stormwater runoff. | Water 1A (C144-00-00) is an upland cut stormwater control feature and functions to collect, retain, and regulate stormwater flow. This feature does not contribute flow to jurisdictional waters. Based on this rationale, the feature meets the (b)(10) exclusion. |
| Water 1B (C144-00-00-wier) | 50 | linear feet | (b)(10) Stormwater control feature constructed or excavated in upland or in a non-jurisdictional water to convey, treat, infiltrate, or store stormwater runoff. | Water 1B (C144-00-00) is an upland cut stormwater control feature and functions to collect, retain, and regulate stormwater flow. This feature does not contribute flow to jurisdictional waters. Based on this rationale, this feature meets the (b)(10) exclusion. |

III. SUPPORTING INFORMATION

A. Select/enter all resources that were used to aid in this determination and attach data/maps to this document and/or references/citations in the administrative record, as appropriate.

☒ Information submitted by, or on behalf of, the applicant/consultant: 4.9-acre SWD Basin of Anderson Road, Bowman Engineering & Consulting, Inc. September 16, 2020.

This information is sufficient for purposes of this AJD.

Rationale: N/A

☐ Data sheets prepared by the Corps: Title(s) and/or date(s).

☒ Photographs: Aerial: USGS (1969, 1970, 1972, 1979), NHAPP (1983, 1989), DOQ 1995, NAIP (2010, 2012, 2014, 2016, 2018)

☐ Corps site visit(s) conducted on: Date(s).

☐ Previous Jurisdictional Determinations (AJDs or PJDs): ORM Number(s) and date(s).

☐ Antecedent Precipitation Tool: provide detailed discussion in Section III.B.

☒ USDA NRCS Soil Survey: NRCS, 2020

☒ USFWS NWI maps: Almeda, Tx, 1982

☒ USGS topographic maps: 7.5' Almeda, Texas

⁴ Some excluded waters, such as (b)(2) and (b)(4), may not be specifically identified on the AJD form unless a requestor specifically asks a Corps district to do so. Corps districts may, in case-by-case instances, choose to identify some or all of these waters within the review area.

⁵ Because of the broad nature of the (b)(1) exclusion and in an effort to collect data on specific types of waters that would be covered by the (b)(1) exclusion, four sub-categories of (b)(1) exclusions were administratively created for the purposes of the AJD Form. These four sub-categories are not new exclusions, but are simply administrative distinctions and remain (b)(1) exclusions as defined by the NWPR.



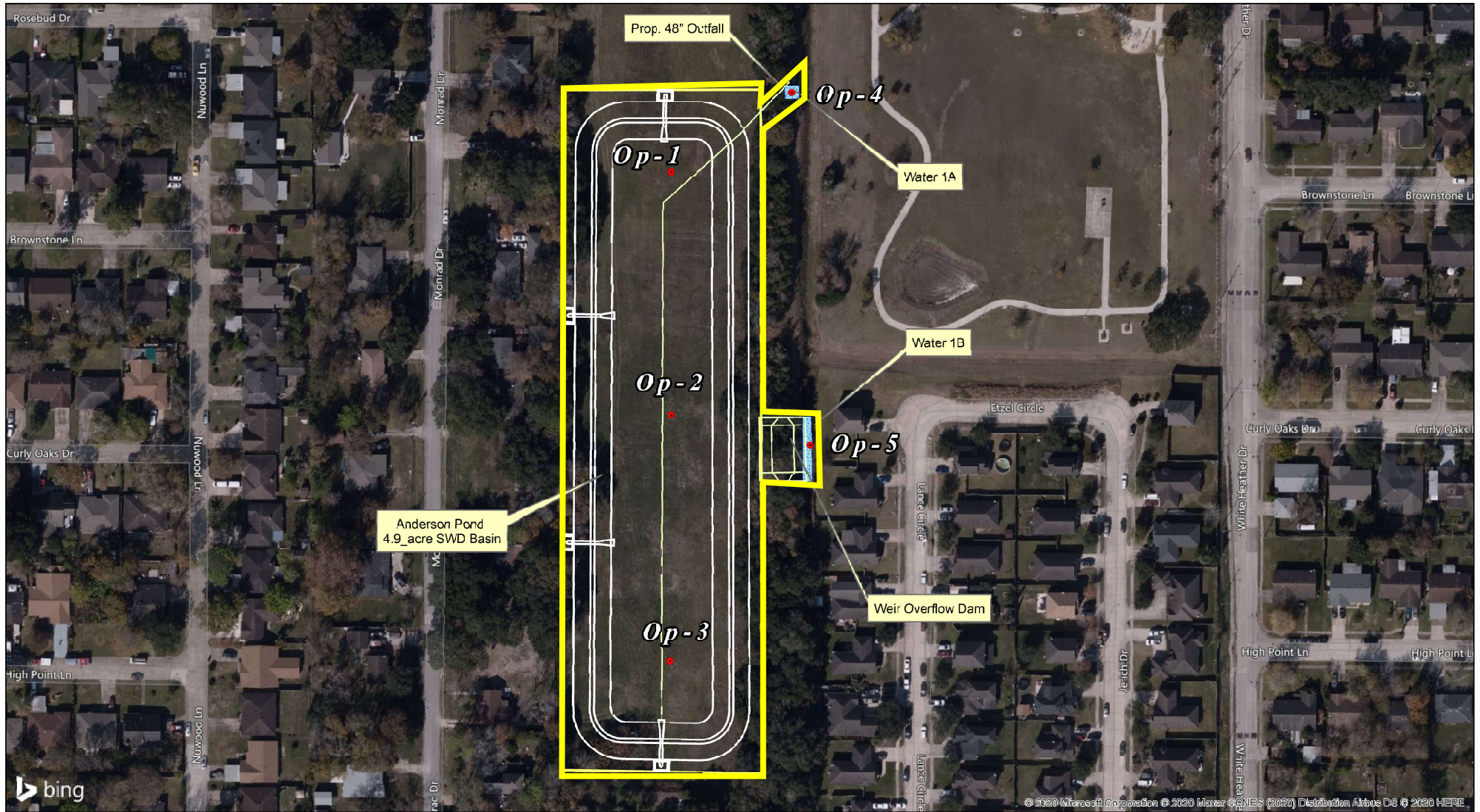
**U.S. ARMY CORPS OF ENGINEERS
REGULATORY PROGRAM
APPROVED JURISDICTIONAL DETERMINATION FORM (INTERIM)
NAVIGABLE WATERS PROTECTION RULE**

Other data sources used to aid in this determination:

| Data Source (select) | Name and/or date and other relevant information |
|----------------------------|---|
| USGS Sources | N/A. |
| USDA Sources | N/A. |
| NOAA Sources | N/A. |
| USACE Sources | N/A. |
| State/Local/Tribal Sources | N/A. |
| Other Sources | N/A. |

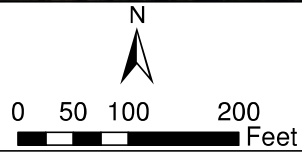
B. Typical year assessment(s): Not applicable

C. Additional comments to support AJD: N/A or provide additional discussion as appropriate.



Legend

- Anderson_Pond_4.9_acre SWD Basin
- Observation Points



7322 Southwest Freeway, Suite# 806
Houston, Texas, 77074

Water 1A & Water 1B
4.9 Acre SWD Basin of Anderson Road
from Hiram Clarke to Almeda Road (FM 521)