



**U.S. ARMY CORPS OF ENGINEERS  
REGULATORY PROGRAM  
APPROVED JURISDICTIONAL DETERMINATION FORM (INTERIM)  
NAVIGABLE WATERS PROTECTION RULE**

**I. ADMINISTRATIVE INFORMATION**

Completion Date of Approved Jurisdictional Determination (AJD): 11/23/2020  
 ORM Number: SWG-2020-00682 (Snake Creek)  
 Associated JDs: N/A  
 Review Area Location<sup>1</sup>: State/Territory: Texas City: Needville County/Parish/Borough: Fort Bend  
 Center Coordinates of Review Area: Latitude 29.414561 Longitude -95.907974

**II. FINDINGS**

**A. Summary:** Check all that apply. At least one box from the following list MUST be selected. Complete the corresponding sections/tables and summarize data sources.

- The review area is comprised entirely of dry land (i.e., there are no waters or water features, including wetlands, of any kind in the entire review area). Rationale: N/A or describe rationale.
- There are “navigable waters of the United States” within Rivers and Harbors Act jurisdiction within the review area (complete table in Section II.B).
- There are “waters of the United States” within Clean Water Act jurisdiction within the review area (complete appropriate tables in Section II.C).
- There are waters or water features excluded from Clean Water Act jurisdiction within the review area (complete table in Section II.D).

**B. Rivers and Harbors Act of 1899 Section 10 (§ 10)<sup>2</sup>**

§ 10 Name	§ 10 Size	§ 10 Criteria	Rationale for § 10 Determination
N/A.	N/A.	N/A.	N/A.

**C. Clean Water Act Section 404**

Territorial Seas and Traditional Navigable Waters ((a)(1) waters): <sup>3</sup>			
(a)(1) Name	(a)(1) Size	(a)(1) Criteria	Rationale for (a)(1) Determination
N/A.	N/A.	N/A.	N/A.

Tributaries ((a)(2) waters):			
(a)(2) Name	(a)(2) Size	(a)(2) Criteria	Rationale for (a)(2) Determination
Snake Creek	3,300 linear feet	(a)(2) Perennial tributary contributes surface water flow directly or indirectly to an (a)(1) water in a typical year.	Per site information there is tributary at this site that is naturally occurring and provides more than ephemeral surface water flow (per aerials perennial flowing) that contributes surface water flow to an (a)(1) water, San Bernard River, in a typical year.

<sup>1</sup> Map(s)/figure(s) are attached to the AJD provided to the requestor.

<sup>2</sup> If the navigable water is not subject to the ebb and flow of the tide or included on the District’s list of Rivers and Harbors Act Section 10 navigable waters list, do NOT use this document to make the determination. The District must continue to follow the procedure outlined in 33 CFR part 329.14 to make a Rivers and Harbors Act Section 10 navigability determination.

<sup>3</sup> A stand-alone TNW determination is completed independently of a request for an AJD. A stand-alone TNW determination is conducted for a specific segment of river or stream or other type of waterbody, such as a lake, where upstream or downstream limits or lake borders are established. A stand-alone TNW determination should be completed following applicable guidance and should NOT be documented on the AJD Form.



**U.S. ARMY CORPS OF ENGINEERS  
REGULATORY PROGRAM  
APPROVED JURISDICTIONAL DETERMINATION FORM (INTERIM)  
NAVIGABLE WATERS PROTECTION RULE**

Lakes and ponds, and impoundments of jurisdictional waters ((a)(3) waters):				
(a)(3) Name	(a)(3) Size	(a)(3) Criteria	Rationale for (a)(3) Determination	
N/A.	N/A.	N/A.	N/A.	N/A.

Adjacent wetlands ((a)(4) waters):				
(a)(4) Name	(a)(4) Size	(a)(4) Criteria	Rationale for (a)(4) Determination	
N/A.	N/A.	N/A.	N/A.	N/A.

**D. Excluded Waters or Features**

Excluded waters ((b)(1) – (b)(12)): <sup>4</sup>				
Exclusion Name	Exclusion Size	Exclusion <sup>5</sup>	Rationale for Exclusion Determination	
N/A.	N/A.	N/A.	N/A.	N/A.

**III. SUPPORTING INFORMATION**

**A. Select/enter all resources** that were used to aid in this determination and attach data/maps to this document and/or references/citations in the administrative record, as appropriate.

- Information submitted by, or on behalf of, the applicant/consultant: [King & Spalding Submittal \(9/8/20\)](#)  
This information [Select](#). sufficient for purposes of this AJD.  
Rationale: [N/A or describe rationale for insufficiency \(including partial insufficiency\)](#).
- Data sheets prepared by the Corps: [Title\(s\) and/or date\(s\)](#).
- Photographs: [Aerial: Google Earth aerials 2012, 2015, 2017, and 2019](#)
- Corps site visit(s) conducted on: [Date\(s\)](#).
- Previous Jurisdictional Determinations (AJDs or PJDs): [ORM Number\(s\) and date\(s\)](#).
- Antecedent Precipitation Tool: [provide detailed discussion in Section III.B.](#)
- USDA NRCS Soil Survey: [Title\(s\) and/or date\(s\)](#).
- USFWS NWI maps: [Kendleton, Texas](#)
- USGS topographic maps: [Kendleton, Texas 1953](#)

**Other data sources used to aid in this determination:**

Data Source (select)	Name and/or date and other relevant information
<a href="#">USGS Sources</a>	<a href="#">N/A.</a>
<a href="#">USDA Sources</a>	<a href="#">N/A.</a>
<a href="#">NOAA Sources</a>	<a href="#">N/A.</a>
<a href="#">USACE Sources</a>	<a href="#">N/A.</a>
<a href="#">State/Local/Tribal Sources</a>	<a href="#">N/A.</a>
<a href="#">Other Sources</a>	<a href="#">N/A.</a>

**B. Typical year assessment(s):**

<sup>4</sup> Some excluded waters, such as (b)(2) and (b)(4), may not be specifically identified on the AJD form unless a requestor specifically asks a Corps district to do so. Corps districts may, in case-by-case instances, choose to identify some or all of these waters within the review area.

<sup>5</sup> Because of the broad nature of the (b)(1) exclusion and in an effort to collect data on specific types of waters that would be covered by the (b)(1) exclusion, four sub-categories of (b)(1) exclusions were administratively created for the purposes of the AJD Form. These four sub-categories are not new exclusions, but are simply administrative distinctions and remain (b)(1) exclusions as defined by the NWPR.



**U.S. ARMY CORPS OF ENGINEERS  
REGULATORY PROGRAM  
APPROVED JURISDICTIONAL DETERMINATION FORM (INTERIM)  
NAVIGABLE WATERS PROTECTION RULE**

**C. Additional comments to support AJD:** *USGS indicates a broken blue line; but aeriels reviewed all show water present in the channel.*



**SWG-2020-00682**

Snake Creek Project Area



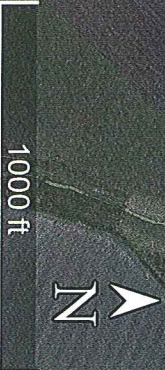
Google Earth

© 2020 Google



Brinkmeyer Rd

Thuesen Rd



1000 ft





**U.S. ARMY CORPS OF ENGINEERS  
REGULATORY PROGRAM  
APPROVED JURISDICTIONAL DETERMINATION FORM (INTERIM)  
NAVIGABLE WATERS PROTECTION RULE**

**I. ADMINISTRATIVE INFORMATION**

Completion Date of Approved Jurisdictional Determination (AJD): 11/23/2020  
 ORM Number: SWG-2020-00682 (Mound Creek)  
 Associated JDs: N/A  
 Review Area Location<sup>1</sup>: State/Territory: Texas City: Guy County/Parish/Borough: Fort Bend  
 Center Coordinates of Review Area: Latitude 29.323319 Longitude -95.787149

**II. FINDINGS**

**A. Summary:** Check all that apply. At least one box from the following list MUST be selected. Complete the corresponding sections/tables and summarize data sources.

- The review area is comprised entirely of dry land (i.e., there are no waters or water features, including wetlands, of any kind in the entire review area). Rationale: N/A or describe rationale.
- There are “navigable waters of the United States” within Rivers and Harbors Act jurisdiction within the review area (complete table in Section II.B).
- There are “waters of the United States” within Clean Water Act jurisdiction within the review area (complete appropriate tables in Section II.C).
- There are waters or water features excluded from Clean Water Act jurisdiction within the review area (complete table in Section II.D).

**B. Rivers and Harbors Act of 1899 Section 10 (§ 10)<sup>2</sup>**

§ 10 Name	§ 10 Size	§ 10 Criteria	Rationale for § 10 Determination
N/A.	N/A.	N/A.	N/A.

**C. Clean Water Act Section 404**

Territorial Seas and Traditional Navigable Waters ((a)(1) waters): <sup>3</sup>			
(a)(1) Name	(a)(1) Size	(a)(1) Criteria	Rationale for (a)(1) Determination
N/A.	N/A.	N/A.	N/A.

Tributaries ((a)(2) waters):			
(a)(2) Name	(a)(2) Size	(a)(2) Criteria	Rationale for (a)(2) Determination
Mound Creek	13,487 linear feet	(a)(2) Perennial tributary contributes surface water flow directly or indirectly to an (a)(1) water in a typical year.	Per site information there is tributary at this site that is naturally occurring and provides more than ephemeral surface water flow (per aerials perennial flowing) that contributes surface water flow to an (a)(1) water, San Bernard River, in a typical year.

<sup>1</sup> Map(s)/figure(s) are attached to the AJD provided to the requestor.

<sup>2</sup> If the navigable water is not subject to the ebb and flow of the tide or included on the District’s list of Rivers and Harbors Act Section 10 navigable waters list, do NOT use this document to make the determination. The District must continue to follow the procedure outlined in 33 CFR part 329.14 to make a Rivers and Harbors Act Section 10 navigability determination.

<sup>3</sup> A stand-alone TNW determination is completed independently of a request for an AJD. A stand-alone TNW determination is conducted for a specific segment of river or stream or other type of waterbody, such as a lake, where upstream or downstream limits or lake borders are established. A stand-alone TNW determination should be completed following applicable guidance and should NOT be documented on the AJD Form.



**U.S. ARMY CORPS OF ENGINEERS  
REGULATORY PROGRAM  
APPROVED JURISDICTIONAL DETERMINATION FORM (INTERIM)  
NAVIGABLE WATERS PROTECTION RULE**

Lakes and ponds, and impoundments of jurisdictional waters ((a)(3) waters):				
(a)(3) Name	(a)(3) Size	(a)(3) Criteria	Rationale for (a)(3) Determination	
N/A.	N/A.	N/A.	N/A.	N/A.

Adjacent wetlands ((a)(4) waters):				
(a)(4) Name	(a)(4) Size	(a)(4) Criteria	Rationale for (a)(4) Determination	
N/A.	N/A.	N/A.	N/A.	N/A.

**D. Excluded Waters or Features**

Excluded waters ((b)(1) – (b)(12)): <sup>4</sup>				
Exclusion Name	Exclusion Size	Exclusion <sup>5</sup>	Rationale for Exclusion Determination	
N/A.	N/A.	N/A.	N/A.	N/A.

**III. SUPPORTING INFORMATION**

**A. Select/enter all resources** that were used to aid in this determination and attach data/maps to this document and/or references/citations in the administrative record, as appropriate.

- Information submitted by, or on behalf of, the applicant/consultant: [King & Spalding Submittal \(9/8/20\)](#)  
This information [Select.](#) sufficient for purposes of this AJD.  
Rationale: [N/A or describe rationale for insufficiency \(including partial insufficiency\).](#)
- Data sheets prepared by the Corps: [Title\(s\) and/or date\(s\).](#)
- Photographs: [Aerial: Google Earth aerials 2011, 2014, and 2018](#)
- Corps site visit(s) conducted on: [Date\(s\).](#)
- Previous Jurisdictional Determinations (AJDs or PJDs): [ORM Number\(s\) and date\(s\).](#)
- Antecedent Precipitation Tool: [provide detailed discussion in Section III.B.](#)
- USDA NRCS Soil Survey: [Title\(s\) and/or date\(s\).](#)
- USFWS NWI maps: [Kendleton, Texas](#)
- USGS topographic maps: [Kendleton, Texas 1929 and Guy, Texas 1953](#)

**Other data sources used to aid in this determination:**

Data Source (select)	Name and/or date and other relevant information
<a href="#">USGS Sources</a>	<a href="#">N/A.</a>
<a href="#">USDA Sources</a>	<a href="#">N/A.</a>
<a href="#">NOAA Sources</a>	<a href="#">N/A.</a>
<a href="#">USACE Sources</a>	<a href="#">N/A.</a>
<a href="#">State/Local/Tribal Sources</a>	<a href="#">N/A.</a>
<a href="#">Other Sources</a>	<a href="#">Google Earth aerials 2011, 2014, and 2018</a>

**B. Typical year assessment(s):**

<sup>4</sup> Some excluded waters, such as (b)(2) and (b)(4), may not be specifically identified on the AJD form unless a requestor specifically asks a Corps district to do so. Corps districts may, in case-by-case instances, choose to identify some or all of these waters within the review area.

<sup>5</sup> Because of the broad nature of the (b)(1) exclusion and in an effort to collect data on specific types of waters that would be covered by the (b)(1) exclusion, four sub-categories of (b)(1) exclusions were administratively created for the purposes of the AJD Form. These four sub-categories are not new exclusions, but are simply administrative distinctions and remain (b)(1) exclusions as defined by the NWPR.



**U.S. ARMY CORPS OF ENGINEERS  
REGULATORY PROGRAM  
APPROVED JURISDICTIONAL DETERMINATION FORM (INTERIM)  
NAVIGABLE WATERS PROTECTION RULE**

**C. Additional comments to support AJD:** USGS indicates a broken blue line; but aeriels reviewed all show water present in the channel.



**SWG-2020-00682**

Google Earth 4/1/2019  
Mound Creek Project Area

