



DEPARTMENT OF THE ARMY
U.S. ARMY CORPS OF ENGINEERS, GALVESTON DISTRICT
515 FLYNN PARKWAY, SUITE 306
CORPUS CHRISTI, TEXAS 78411

SWG-South Unit

28 April 2026

MEMORANDUM FOR RECORD

SUBJECT: US Army Corps of Engineers (Corps) Pre-2015 Regulatory Regime Approved Jurisdictional Determination in Light of *Sackett v. EPA*, 143 S. Ct. 1322 (2023),¹ SWG-2023-00204²

BACKGROUND. An Approved Jurisdictional Determination (AJD) is a Corps document stating the presence or absence of waters of the United States on a parcel or a written statement and map identifying the limits of waters of the United States on a parcel. AJDs are clearly designated appealable actions and will include a basis of JD with the document.³ AJDs are case-specific and are typically made in response to a request. AJDs are valid for a period of five years unless new information warrants revision of the determination before the expiration date or a District Engineer has identified, after public notice and comment, that specific geographic areas with rapidly changing environmental conditions merit re-verification on a more frequent basis.⁴ For the purposes of this AJD, we have relied on section 10 of the Rivers and Harbors Act of 1899 (RHA),⁵ the Clean Water Act (CWA) implementing regulations published by the Department of the Army in 1986 and amended in 1993 (references 2.a. and 2.b. respectively), the 2008 *Rapanos-Carabell* guidance (reference 2.c.), and other applicable guidance, relevant case law and longstanding practice, (collectively the pre-2015 regulatory regime), and the *Sackett* decision (reference 2.d.) in evaluating jurisdiction.

This Memorandum for Record (MFR) constitutes the basis of jurisdiction for a Corps AJD as defined in 33 CFR §331.2. The features addressed in this AJD were evaluated consistent with the definition of “waters of the United States” found in the pre-2015 regulatory regime and consistent with the Supreme Court’s decision in *Sackett*. This AJD did not rely on the 2023 “Revised Definition of ‘Waters of the United States,’” as

¹ While the Supreme Court’s decision in *Sackett* had no effect on some categories of waters covered under the CWA, and no effect on any waters covered under RHA, all categories are included in this Memorandum for Record for efficiency.

² When documenting aquatic resources within the review area that are jurisdictional under the Clean Water Act (CWA), use an additional MFR and group the aquatic resources on each MFR based on the TNW, interstate water, or territorial seas that they are connected to. Be sure to provide an identifier to indicate when there are multiple MFRs associated with a single AJD request (i.e., number them 1, 2, 3, etc.).

³ 33 CFR 331.2.

⁴ Regulatory Guidance Letter 05-02.

⁵ USACE has authority under both Section 9 and Section 10 of the Rivers and Harbors Act of 1899 but for convenience, in this MFR, jurisdiction under RHA will be referred to as Section 10.

CESWG-RD-C

SUBJECT: Pre-2015 Regulatory Regime Approved Jurisdictional Determination in Light of *Sackett v. EPA*, 143 S. Ct. 1322 (2023), SWG-2023-00204

amended on September 8, 2023 (Amended 2023 Rule) because, as of the date of this decision, the Amended 2023 Rule is not applicable in Texas due to litigation.

1. SUMMARY OF CONCLUSIONS.

- a. Provide a list of each individual feature within the review area and the jurisdictional status of each one (i.e., identify whether each feature is/is not a water of the United States and/or a navigable water of the United States).

Name	Size (acres)/LF	Location	Jurisdictional Status
Wetland1 (H-001)	0.03-acres	29.63014 -95.09526	No, no continuous surface connection to WOTUS
Wetland 1a (H-001a)	0.12	29.62326 -95.09223	No, no continuous surface connection to WOTUS
Wetland 2 (H-002)	0.02	29.62986 -95.09523	No, no continuous surface connection to WOTUS
Wetland 2a (H-002a)	0.17-acres	29.62269 -95.0921	No, no continuous surface connection to WOTUS
Wetland 3 (H-003)	0.17-acres	29.62977 -94.09488	No, no continuous surface connection to WOTUS
Wetland 3a (H-003a)	0.002-acres	29.62173 -95.09308	No, no continuous surface connection to WOTUS
Wetland 4 (H-004)	0.14-acres	29.62946 -95.09515	No, no continuous surface connection to WOTUS
Wetland 4a (H-004a))	0.3-acres	29.62133 -95.09244	No, no continuous surface connection to WOTUS
Wetland 5 (H-005)	0.02-acres	29.62949 -95.09457	No, no continuous surface connection to WOTUS
Wetland 5a (H-005a)	0.009-acres	29.62088 -95.09203	No, no continuous surface connection to WOTUS
Wetland 6 (H-006)	1.25-acres	29.62902 -95.09487	No, no continuous surface connection to WOTUS
Relatively Permanent Water (RPW) (H-006a)	1111 LF	29.62246 -95.09205	Yes, Spring Gully is an RPW, Section 404 water
Wetland 7 (H-007)	1.46-acres	29.62851 -95.09419	No, no continuous surface connection to WOTUS

CESWG-RD-C

SUBJECT: Pre-2015 Regulatory Regime Approved Jurisdictional Determination in Light of *Sackett v. EPA*, 143 S. Ct. 1322 (2023), SWG-2023-00204

Name	Size (acres)/LF	Location	Jurisdictional Status
Wetland 7a (H-007a)	0.5-acres	29.62537 -95.09321	No, no continuous surface connection to WOTUS
Wetland 8 (H-008)	0.37-acres	29.62763 -95.09396	No, no continuous surface connection to WOTUS
Wetland 8a (H-008a)	2.85-acres	29.62402 -94.97461	No, no continuous surface connection to WOTUS
Wetland 9 (H-009)	2.48-acres	29.62638 -95.09268	No, no continuous surface connection to WOTUS
Wetland 9a (H-009a)	0.08-acres	29.62163 -95.09233	Yes, wetland adjacent to a RPW
Wetland 10 (H-010)	0.76-acres	29.62631 -95.09223	No, no continuous surface connection to WOTUS
Wetland 11 (H-011)	6.58-acres	29.6267 -95.09476	No, no continuous surface connection to WOTUS
Wetland 12 (H-012)	23.91-acres	29.62478 -95.09528	No, no continuous surface connection to WOTUS
Pond 1 (H-013)	0.09-acres	29.62306 -95.09435	No, Non-WOTUS, Pond
Pond 2 (H-014)	0.05-acres	29.62437 -95.09614	No, Non-WOTUS, Pond
Wetland 13 (H-015)	4.48-acres	29.62637 -95.09812	No, no continuous surface connection to WOTUS
Pond 3 (H-016)	0.07-acres	29.6268 -95.09815	No, Non-WOTUS, Pond
Pond 4 (H-017)	0.02-acres	29.62666 -95.09823	No, Non-WOTUS, Pond
Pond 5 (H-018)	0.03-acres	29.62782 -95.09841	No, Non-WOTUS, Pond
Wetland 14 (H-019)	13.55-acres	29.62782 -95.09705	No, no continuous surface connection to WOTUS
Wetland 15 (H-020)	0.14-acres	29.62787 -95.0935	No, no continuous surface connection to WOTUS
Wetland 16 (H-021)	0.18-acres	29.62873 -95.09449	No, no continuous surface connection to WOTUS
Wetland 17 (H-022a)	1.0-acres	29.62752 -95.09562	No, no continuous surface connection to WOTUS
Wetland 18 (H-022b)	1.92-acres	29.62752 -95.09562	No, no continuous surface connection to WOTUS

CESWG-RD-C

SUBJECT: Pre-2015 Regulatory Regime Approved Jurisdictional Determination in Light of *Sackett v. EPA*, 143 S. Ct. 1322 (2023), SWG-2023-00204

Name	Size (acres)/LF	Location	Jurisdictional Status
Wetland 19 (H-022c)	0.5-acres	29.62752 -95.09562	No, no continuous surface connection to WOTUS
Wetland 20 (H-023)	0.35	29.62598 -95.09685	No, no continuous surface connection to WOTUS
Wetland 21 (H-024a)	0.04	29.62515 -95.0976	No, no continuous surface connection to WOTUS
Wetland 22 (H-024b)	0.02-acres	29.62515 -95.0976	No, no continuous surface connection to WOTUS
Wetland 23 (H-024c)	0.03-acres	29.62515 -95.0976	No, no continuous surface connection to WOTUS
Upland Ditch 1	0.31- acres/570-LF	29.627071 -95.099106	No, non-RPW

2. REFERENCES.

- a. Final Rule for Regulatory Programs of the Corps of Engineers, 51 FR 41206 (November 13, 1986).
- b. Clean Water Act Regulatory Programs, 58 FR 45008 (August 25, 1993).
- c. U.S. EPA & U.S. Army Corps of Engineers, Clean Water Act Jurisdiction Following the U.S. Supreme Court’s Decision in *Rapanos v. United States & Carabell v. United States* (December 2, 2008)
- d. *Sackett v. EPA*, 598 U.S. 651, 143 S. Ct. 1322 (2023)
- e. 12 March 2025 Memorandum to the Field Between the U.S. Department of Army, U.S. Army Corps of Engineers, and the U.S. Environmental Protection Agency Concerning the Proper Implementation of “Continuous Surface Connection” Under the Definition of “Waters of the United States” Under the Clean Water Act.

3. REVIEW AREA. An approximately 107-acre tract is located at 0.90 miles southeast of the intersection of Red Bluff Road and Genoa Red Bluff Road, Pasadena, Harris County, Texas. 29.626434 N, -95.096320 W

4. NEAREST TRADITIONAL NAVIGABLE WATER (TNW), INTERSTATE WATER, OR THE TERRITORIAL SEAS TO WHICH THE AQUATIC RESOURCE IS CONNECTED. N/A

5. FLOWPATH FROM THE SUBJECT AQUATIC RESOURCES TO A TNW, INTERSTATE WATER, OR THE TERRITORIAL SEAS. Flow is through a man-made ditch (not an RPW) that runs off the tract to Spring gully that flows into Armand Bayou which is a TNW.
6. SECTION 10 JURISDICTIONAL WATERS⁶: Describe aquatic resources or other features within the review area determined to be jurisdictional in accordance with Section 10 of the Rivers and Harbors Act of 1899. Include the size of each aquatic resource or other feature within the review area and how it was determined to be jurisdictional in accordance with Section 10.⁷ N/A
7. SECTION 404 JURISDICTIONAL WATERS: Describe the aquatic resources within the review area that were found to meet the definition of waters of the United States in accordance with the pre-2015 regulatory regime and consistent with the Supreme Court's decision in *Sackett*. List each aquatic resource separately, by name, consistent with the naming convention used in section 1, above. Include a rationale for each aquatic resource, supporting that the aquatic resource meets the relevant category of "waters of the United States" in the pre-2015 regulatory regime. The rationale should also include a written description of, or reference to a map in the administrative record that shows, the lateral limits of jurisdiction for each aquatic resource, including how that limit was determined, and incorporate relevant references used. Include the size of each aquatic resource in acres or linear feet and attach and reference related figures as needed.
 - a. TNWs (a)(1): N/A
 - b. Interstate Waters (a)(2): N/A
 - c. Other Waters (a)(3): N/A
 - d. Impoundments (a)(4): N/A
 - e. Tributaries (a)(5): 1,111-Linear Feet (LF) of Relatively Permanent Waters (RPW) exist within the review area. H-006a is a 1,111 – LF portion of Spring Gully that

⁶ 33 CFR 329.9(a) A waterbody which was navigable in its natural or improved state, or which was susceptible of reasonable improvement (as discussed in § 329.8(b) of this part) retains its character as "navigable in law" even though it is not presently used for commerce, or is presently incapable of such use because of changed conditions or the presence of obstructions.

⁷ This MFR is not to be used to make a report of findings to support a determination that the water is a navigable water of the United States. The district must follow the procedures outlined in 33 CFR part 329.14 to make a determination that water is a navigable water of the United States subject to Section 10 of the RHA.

flows into Armand Bayou which is a Section 10 Traditional Navigable Water (TNW) at their confluence.

- f. The territorial seas (a)(6): N/A
- g. Adjacent wetlands (a)(7): There is one (1) wetland that abuts Spring Gully within the review area. Wetland 9a (H-009a) = 0.08-acres. Under the pre-2015 regime and consistent with the *Rapanos* plurality and *Sackett*, adjacent wetlands are jurisdictional when they have a continuous surface connection with traditional navigable waters, the territorial seas, interstate waters, relatively permanent jurisdictional impoundments, or relatively permanent tributaries; therefore, Wetlands 9a (H-009a) meets the definition of adjacent as defined in the pre-2015 post *Sackett* guidance and is a water of the U.S.

8. NON-JURISDICTIONAL AQUATIC RESOURCES AND FEATURES

Describe aquatic resources and other features within the review area identified as “generally non-jurisdictional” in the preamble to the 1986 regulations (referred to as “preamble waters”).⁸ Include size of the aquatic resource or feature within the review area and describe how it was determined to be non-jurisdictional under the CWA as a preamble water

- a. Describe aquatic resources and features within the review area identified as “generally not jurisdictional” in the *Rapanos* guidance. Include size of the aquatic resource or feature within the review area and describe how it was determined to be non-jurisdictional under the CWA based on the criteria listed in the guidance.

There are five (5) ponds located within the review area, totaling 0.26-acres. Pond 1 (H-013) = 0.09-acres, Pond 2 (H-014) = 0.05-acres, Pond 3 (H-016) = 0.07-acres, Pond 4 (H-017) = 0.02-acres; and Pond 5 (H-018) = 0.03-acres. These ponds are remnants from ponds that were either used for livestock in the past or results of small borrow pit areas that retained water.

- b. Describe aquatic resources and features identified within the review area as waste treatment systems, including treatment ponds or lagoons designed to meet the requirements of CWA. Include the size of the waste treatment system within the review area and describe how it was determined to be a waste treatment system.

⁸ 51 FR 41217, November 13, 1986.

There is one (1) drainage ditch located within the review area, totaling 570-linear feet (LF). Upland Ditch 1 = 570-LF. The drainage ditch does not carry a relatively permanent flow, does not have an ordinary high-water mark and/or a bed and bank. Ditches (including roadside ditches) excavated wholly in and draining only uplands and that do not carry a relatively permanent flow of water are generally not waters of the United States because they are not tributaries. The ditch is a non-relatively permanent water and does not flow into a traditional navigable water; therefore, the ditch does not meet the definition of a tributary as defined in the pre-2015 regime post-Sackett guidance and is not a water of the United States.

- c. Describe aquatic resources and features within the review area determined to be prior converted cropland in accordance with the 1993 regulations (reference 2.b.). Include the size of the aquatic resource or feature within the review area and describe how it was determined to be prior converted cropland. N/A
- d. Describe aquatic resources (i.e. lakes and ponds) within the review area, which do not have a nexus to interstate or foreign commerce, and prior to the January 2001 Supreme Court decision in “SWANCC,” would have been jurisdictional based solely on the “Migratory Bird Rule.” Include the size of the aquatic resource or feature, and how it was determined to be an “isolated water” in accordance with SWANCC. N/A
- e. Describe aquatic resources and features within the review area that were determined to be non-jurisdictional because they do not meet one or more categories of waters of the United States under the pre-2015 regulatory regime consistent with the Supreme Court’s decision in *Sackett* (e.g., tributaries that are non-relatively permanent waters; non-tidal wetlands that do not have a continuous surface connection to a jurisdictional water).

The review area contains thirty (30) wetlands totaling 63.35-acres.

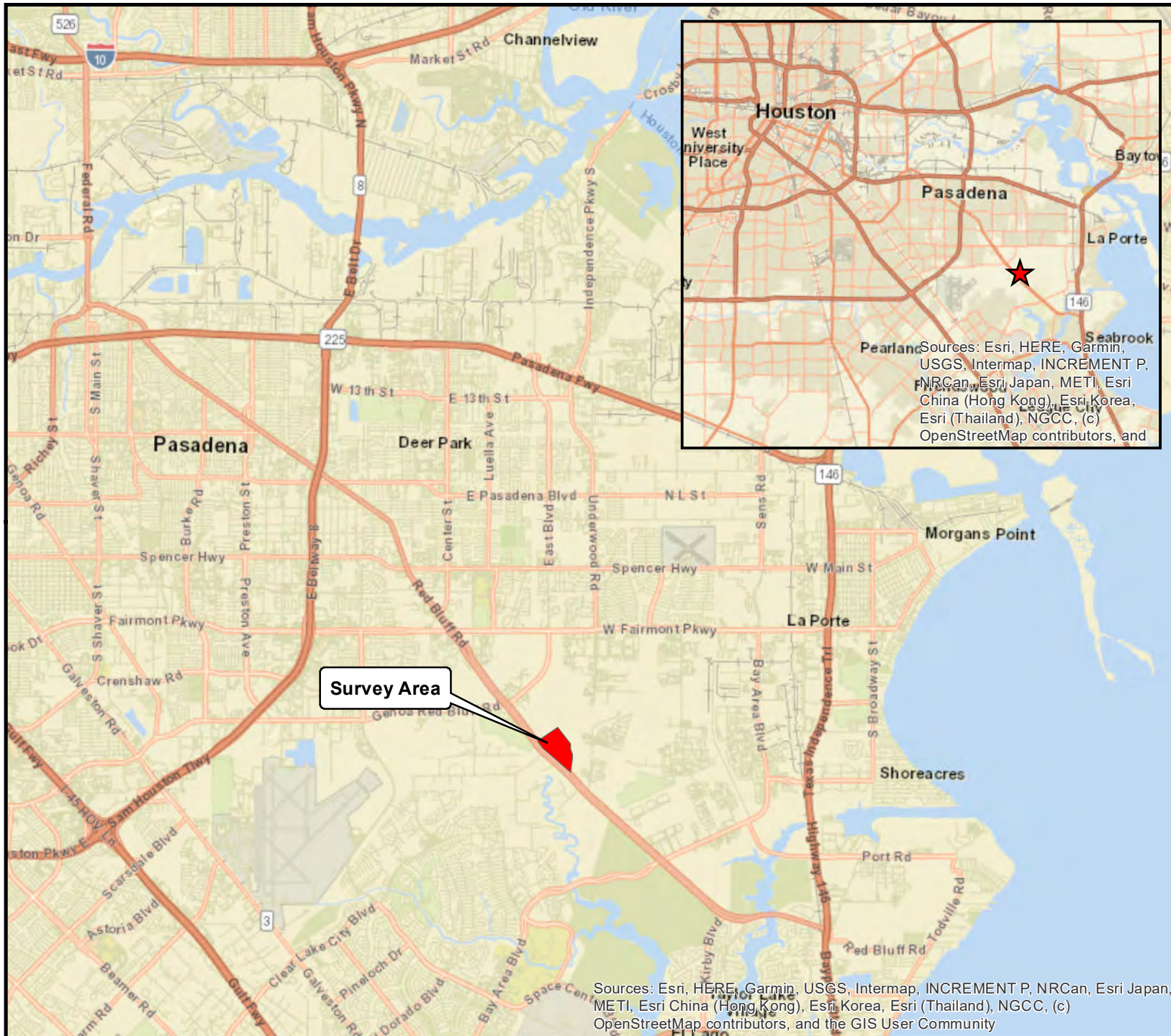
H-001=0.03-acres, H-001a=0.12-acres, H-002=0.02-acres, H-002a=0.17-acres, H-003=0.17-acres, H-003a=0.002-acres, H-004=0.14-acres, H-004a=0.3-acres, H-005=0.02-acres, H-005a=0.009-acres, H-006=1.25-acres, H-007=1.46-acres, H-007a=0.50-acres, H-008=0.37-acres, H-008a=2.85-acres, H-009=2.48-acres, H-010=0.76-acres, H-011=6.58-acres, H-012=23.91, H-015=4.48-acres, H-019=13.55-acres, H-020=0.14-acres, H-021=0.18-acres, H-022a=1.0-acres, H-022b=1.92-acres, H-022c=0.5-acres, H-023=0.35-acres, H-024a=0.04-acres, H-024b=0.02-acres, H-024c=0.03-acres. Based on data sources listed in #9, our 26 February 2026 desk review, we have determined these wetlands reside in depressional areas within the review area, that collect rainwater, and they are

CESWG-RD-C

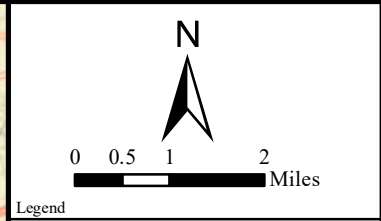
SUBJECT: Pre-2015 Regulatory Regime Approved Jurisdictional Determination in Light of *Sackett v. EPA*, 143 S. Ct. 1322 (2023), SWG-2023-00204

completely enclosed by elevated uplands. Based on our review, the wetlands do not have any known continuous surface connection to any RPW, TNW, or impoundments of either. Therefore, in accordance with the pre-2015 regime post-Sackett and the 12 March 2025 Memorandum to the Field Between the U.S. Department of Army, U.S. Army Corps of Engineers, and the U.S. Environmental Protection Agency Concerning the Proper Implementation of “Continuous Surface Connection” Under the Definition of “Waters of the United States” Under the Clean Water Act, Wetlands H-001-H009, H-010 through H-012, and H-019 through H-024c, Wetlands H-001-H009a, H-010 through H-012, and H-015, H-019 through H-024c do not meet the definition of adjacent as defined in the pre-2015 regime post Sackett guidance and are not waters of the United States subject to Section 404 of the Clean Water Act. Any discharge of dredged and/or fill material into Wetlands H-001-H009, H-010 through H-012, H-015; and H-019 through H-024c, does not require a Department of the Army permit.

9. DATA SOURCES. List sources of data/information used in making determination. Include titles and dates of sources used and ensure that information referenced is available in the administrative record.
 - a. Desk Review: 26 February 2026
 - b. Maps, plans, plots, and data submitted by Benchmark Ecological Services Inc. on behalf of Roux Inc. Wetland delineation report received 26 August 2024.
 - c. Aerial Photos: Google Earth Aerial Imagery (1944, 1953, 1978, 2001; and 2025)
 - d. United States Department of Interior (DOI), Fish and Wildlife Service (FWS), National Wetland Inventory (NWI); FWS NWI ESRI Layer.
 - e. United State Department of Agriculture (USDA), Natural Resource Conservation Service (NRCS), Soil Survey Geographic Database (SSURGO) Esri Layer
 - f. United States Geological Survey Topographic Maps: La Porte, League City; and Seabrook, Texas Quadrangles 1916, 1982, 2010: and 2022
10. OTHER SUPPORTING INFORMATION. N/A
11. NOTE: The structure and format of this MFR were developed in coordination with the EPA and Department of the Army. The MFR’s structure and format may be subject to future modification or may be rescinded as needed to implement additional guidance from the agencies; however, the approved jurisdictional determination described herein is a final agency action.



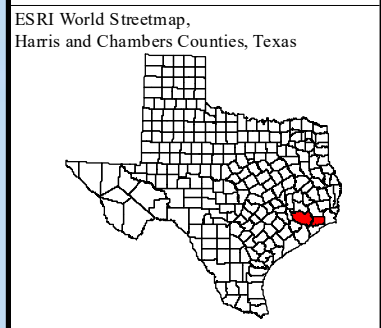
Sources: Esri, HERE, Garmin, USGS, Intermap, INCREMENT P, NRCAn, Esri Japan, METI, Esri China (Hong Kong), Esri Korea, Esri (Thailand), NGCC, (c) OpenStreetMap contributors, and the GIS User Community



Legend

- - Survey Area
- ★ - Site Location

Notes



Site Location Map

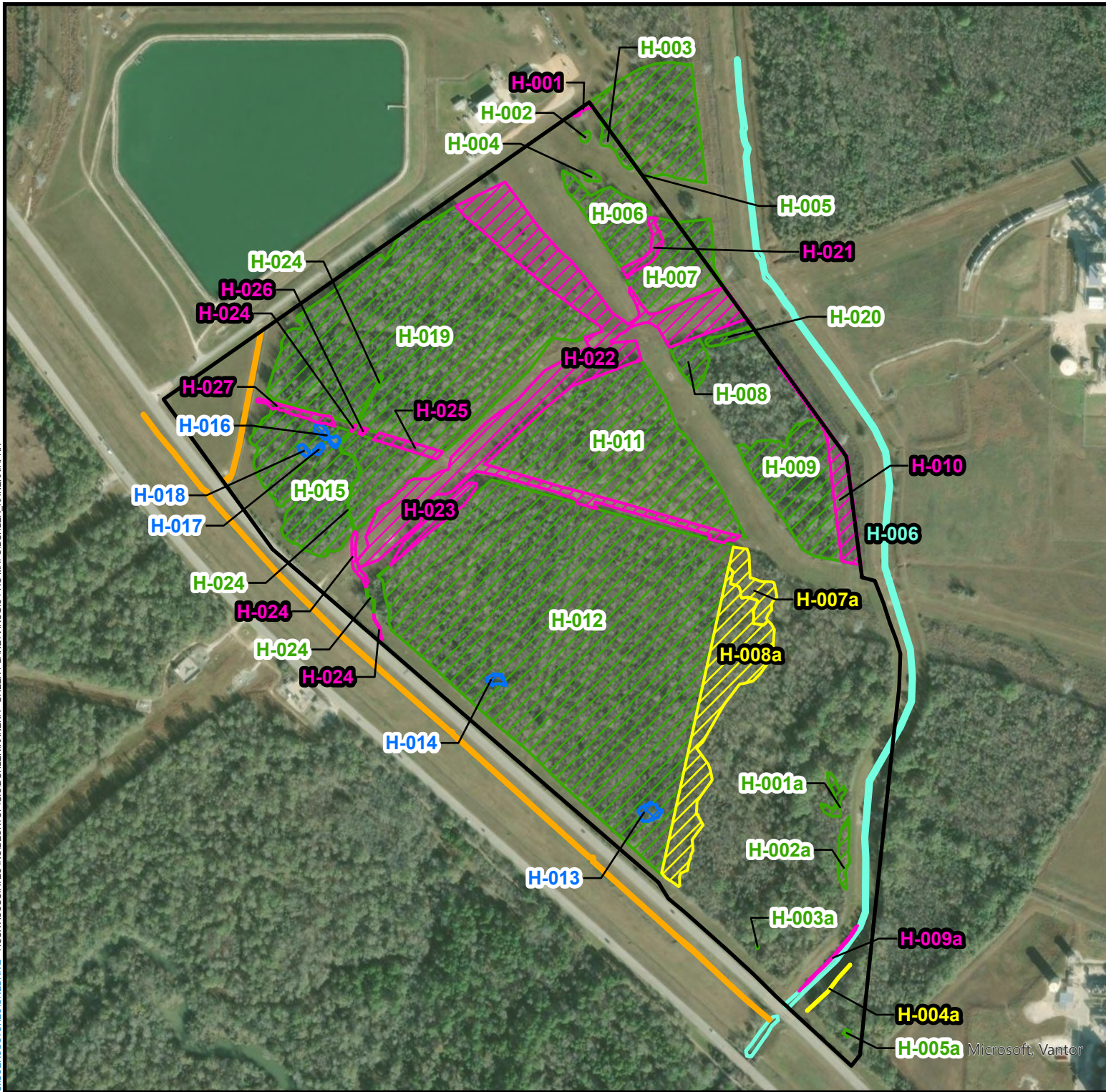
Roux, Inc.

Project Moonshot
Bohler Project TXA220155.00
Parcel Wetland Evaluation Report
Harris County, Texas

BESI
Benchmark
Ecological Services, Inc.

Project: 20012-002
Date: 12/2/2022

Figure 1



LEGEND

- Survey Area
- Aquatic Features**
- PFO Wetland
- Upland Ditch
- PEM Wetland
- POW
- PSS Wetland
- Stream

NOTES

1.

400 0 400'

Title:

BESI WETLAND DELINEATION DATA

PASADENA, TEXAS

Prepared for:

USACE - GALVESTON DISTRICT

Compiled by: BESI	Date: 04/20/26	FIGURE
Prepared by: JLS	Scale: AS SHOWN	X
Project Mgr: JLS	Project: 2578.0048H003	
File: F(BL)		

Microsoft, Vantor