



DEPARTMENT OF THE ARMY
U.S. ARMY CORPS OF ENGINEERS, GALVESTON DISTRICT
5151 FLYNN PARKWAY, SUITE 306
CORPUS CHRISTI, TEXAS 78411-4318

Corpus Christi Regulatory Field Office

July 24, 2024

MEMORANDUM FOR RECORD

SUBJECT: US Army Corps of Engineers (Corps) Pre-2015 Regulatory Regime Approved Jurisdictional Determination in Light of *Sackett v. EPA*, 143 S. Ct. 1322 (2023),¹ SWG-2023-00282²

BACKGROUND. An Approved Jurisdictional Determination (AJD) is a Corps document stating the presence or absence of waters of the United States on a parcel or a written statement and map identifying the limits of waters of the United States on a parcel. AJDs are clearly designated appealable actions and will include a basis of JD with the document.³ AJDs are case-specific and are typically made in response to a request. AJDs are valid for a period of five years unless new information warrants revision of the determination before the expiration date or a District Engineer has identified, after public notice and comment, that specific geographic areas with rapidly changing environmental conditions merit re-verification on a more frequent basis.⁴ For the purposes of this AJD, we have relied on section 10 of the Rivers and Harbors Act of 1899 (RHA),⁵ the Clean Water Act (CWA) implementing regulations published by the Department of the Army in 1986 and amended in 1993 (references 2.a. and 2.b. respectively), the 2008 *Rapanos-Carabell* guidance (reference 2.c.), and other applicable guidance, relevant case law and longstanding practice, (collectively the pre-2015 regulatory regime), and the *Sackett* decision (reference 2.d.) in evaluating jurisdiction.

This Memorandum for Record (MFR) constitutes the basis of jurisdiction for a Corps AJD as defined in 33 CFR §331.2. The features addressed in this AJD were evaluated consistent with the definition of “waters of the United States” found in the pre-2015 regulatory regime and consistent with the Supreme Court’s decision in *Sackett*. This AJD did not rely on the 2023 “Revised Definition of ‘Waters of the United States,’” as

¹ While the Supreme Court’s decision in *Sackett* had no effect on some categories of waters covered under the CWA, and no effect on any waters covered under RHA, all categories are included in this Memorandum for Record for efficiency.

² When documenting aquatic resources within the review area that are jurisdictional under the Clean Water Act (CWA), use an additional MFR and group the aquatic resources on each MFR based on the TNW, interstate water, or territorial seas that they are connected to. Be sure to provide an identifier to indicate when there are multiple MFRs associated with a single AJD request (i.e., number them 1, 2, 3, etc.).

³ 33 CFR 331.2.

⁴ Regulatory Guidance Letter 05-02.

⁵ USACE has authority under both Section 9 and Section 10 of the Rivers and Harbors Act of 1899 but for convenience, in this MFR, jurisdiction under RHA will be referred to as Section 10.

Corpus Christi Regulatory Field Office

SUBJECT: Pre-2015 Regulatory Regime Approved Jurisdictional Determination in Light of *Sackett v. EPA*, 143 S. Ct. 1322 (2023), SWG-2023-00282

amended on September 8, 2023 (Amended 2023 Rule) because, as of the date of this decision, the Amended 2023 Rule is not applicable in Texas due to litigation.

1. SUMMARY OF CONCLUSIONS.

- a. Provide a list of each individual feature within the review area and the jurisdictional status of each one (i.e., identify whether each feature is/is not a water of the United States and/or a navigable water of the United States).
 - i. Wet1 (0.34 ac.), jurisdictional, Section 404

2. REFERENCES.

- a. Final Rule for Regulatory Programs of the Corps of Engineers, 51 FR 41206 (November 13, 1986).
- b. Clean Water Act Regulatory Programs, 58 FR 45008 (August 25, 1993).
- c. U.S. EPA & U.S. Army Corps of Engineers, Clean Water Act Jurisdiction Following the U.S. Supreme Court's Decision in *Rapanos v. United States & Carabell v. United States* (December 2, 2008)
- d. *Sackett v. EPA*, 598 U.S. ___, 143 S. Ct. 1322 (2023)

3. REVIEW AREA.

The review area is approximately 0.34-ac in size and consists of an undeveloped property at 250 Kingfish Dr., Rockport, Aransas County, Texas.

LATITUDE/LONGITUDE (Decimal Degrees):

Latitude: 28.168793 N; Longitude: 97.010672 W

4. NEAREST TRADITIONAL NAVIGABLE WATER (TNW), INTERSTATE WATER, OR THE TERRITORIAL SEAS TO WHICH THE AQUATIC RESOURCE IS CONNECTED.

Copano Bay

5. FLOWPATH FROM THE SUBJECT AQUATIC RESOURCES TO A TNW, INTERSTATE WATER, OR THE TERRITORIAL SEAS

Wet1 in the review area drains into Copano Bay, a TNW, through a series of drainage ditches and culverts. Wet1 abuts a drainage ditch that contained standing water on the day of the site visit. Water in the drainage ditch flows approximately 284 feet east along Kingfish Dr. to Swordfish Dr., then approximately 270 feet southeast through a ditch along Swordfish Dr., then through an approximate 45-foot culvert under Sailfish Dr., then approximately 380 linear feet southeast through a ditch along Swordfish Dr., then through an approximate 48-foot culvert under Channelview Rd., then approximately 566 feet east through a ditch along Channelview Rd., then approximately 319 linear feet south through a ditch along Northside Dr., then through an approximate 38-foot culvert under Palmetto Point Rd., then approximately 1,669 linear feet south through a ditch approximately 143 feet west of Bayview Loop, the approximately 807 linear feet west through a ditch to Copano Bay, a TNW. See attached map of flow path.

6. SECTION 10 JURISDICTIONAL WATERS⁶: Describe aquatic resources or other features within the review area determined to be jurisdictional in accordance with Section 10 of the Rivers and Harbors Act of 1899. Include the size of each aquatic resource or other feature within the review area and how it was determined to be jurisdictional in accordance with Section 10.⁷

N/A

7. SECTION 404 JURISDICTIONAL WATERS: Describe the aquatic resources within the review area that were found to meet the definition of waters of the United States in accordance with the pre-2015 regulatory regime and consistent with the Supreme Court's decision in *Sackett*. List each aquatic resource separately, by name, consistent with the naming convention used in section 1, above. Include a rationale for each aquatic resource, supporting that the aquatic resource meets the relevant category of "waters of the United States" in the pre-2015 regulatory regime. The rationale should also include a written description of, or reference to a map in the administrative record that shows, the lateral limits of jurisdiction for each aquatic resource, including how that limit was determined, and incorporate relevant references used. Include the size of each aquatic resource in acres or linear feet and attach and reference related figures as needed.

⁶ 33 CFR 329.9(a) A waterbody which was navigable in its natural or improved state, or which was susceptible of reasonable improvement (as discussed in § 329.8(b) of this part) retains its character as "navigable in law" even though it is not presently used for commerce, or is presently incapable of such use because of changed conditions or the presence of obstructions.

⁷ This MFR is not to be used to make a report of findings to support a determination that the water is a navigable water of the United States. The district must follow the procedures outlined in 33 CFR part 329.14 to make a determination that water is a navigable water of the United States subject to Section 10 of the RHA.

- a. TNWs (a)(1): N/A
- b. Interstate Waters (a)(2): N/A
- c. Other Waters (a)(3): N/A
- d. Impoundments (a)(4): N/A
- e. Tributaries (a)(5): N/A
- f. The territorial seas (a)(6): N/A
- g. Adjacent wetlands (a)(7): Wet1 (0.34-acre) is jurisdictional based on a connection through a discrete feature to an (a)(1) water. The wetland abuts a drainage ditch that connects to Copano Bay through a series of drainage ditches and culverts. Therefore, Wet1 has a continuous surface connection to Copano Bay, a traditional navigable water. The flow path from Wet1 is as follows: Wet1 abuts a drainage ditch that contained standing water on the day of the site visit. Water in the drainage ditch flows approximately 284 feet east along Kingfish Dr. to Swordfish Dr., then approximately 270 feet southeast through a ditch along Swordfish Dr., then through an approximate 45-foot culvert under Sailfish Dr., then approximately 380 linear feet southeast through a ditch along Swordfish Dr., then through an approximate 48-foot culvert under Channelview Rd., then approximately 566 feet east through a ditch along Channelview Rd., then approximately 319 linear feet south through a ditch along Northside Dr., then through an approximate 38-foot culvert under Palmetto Point Rd., then approximately 1,669 linear feet south through a ditch approximately 143 feet west of Bayview Loop, the approximately 807 linear feet west through a ditch to Copano Bay, a TNW. Wet1 is adjacent to a TNW and is a water of the United States subject to Section 404.

8. NON-JURISDICTIONAL AQUATIC RESOURCES AND FEATURES

- a. Describe aquatic resources and other features within the review area identified as “generally non-jurisdictional” in the preamble to the 1986 regulations (referred to as “preamble waters”).⁸ Include size of the aquatic resource or feature within the review area and describe how it was determined to be non-jurisdictional under the CWA as a preamble water.

⁸ 51 FR 41217, November 13, 1986.

N/A

- b. Describe aquatic resources and features within the review area identified as “generally not jurisdictional” in the *Rapanos* guidance. Include size of the aquatic resource or feature within the review area and describe how it was determined to be non-jurisdictional under the CWA based on the criteria listed in the guidance.

N/A

- c. Describe aquatic resources and features identified within the review area as waste treatment systems, including treatment ponds or lagoons designed to meet the requirements of CWA. Include the size of the waste treatment system within the review area and describe how it was determined to be a waste treatment system.

N/A

- d. Describe aquatic resources and features within the review area determined to be prior converted cropland in accordance with the 1993 regulations (reference 2.b.). Include the size of the aquatic resource or feature within the review area and describe how it was determined to be prior converted cropland.

N/A

- e. Describe aquatic resources (i.e. lakes and ponds) within the review area, which do not have a nexus to interstate or foreign commerce, and prior to the January 2001 Supreme Court decision in “*SWANCC*,” would have been jurisdictional based solely on the “Migratory Bird Rule.” Include the size of the aquatic resource or feature, and how it was determined to be an “isolated water” in accordance with *SWANCC*.

N/A

- f. Describe aquatic resources and features within the review area that were determined to be non-jurisdictional because they do not meet one or more categories of waters of the United States under the pre-2015 regulatory regime consistent with the Supreme Court’s decision in *Sackett* (e.g., tributaries that are non-relatively permanent waters; non-tidal wetlands that do not have a continuous surface connection to a jurisdictional water).

N/A

Corpus Christi Regulatory Field Office

SUBJECT: Pre-2015 Regulatory Regime Approved Jurisdictional Determination in Light of *Sackett v. EPA*, 143 S. Ct. 1322 (2023), SWG-2023-00282

9. DATA SOURCES. List sources of data/information used in making determination. Include titles and dates of sources used and ensure that information referenced is available in the administrative record.
 - a. Site visits June 13, 2023 and October 16, 2023.
 - b. Aerials (1995, 2009, 2011, 2014, 2017, 2020, 2022; source: Google Earth)
 - c. USGS Topographic Map 1:24,000 Lamar, TX (2022)
 - d. Web Soil Survey Hydric Rating Map for San Patricio and Aransas Counties, Texas (NRCS website accessed June 12, 2023)
 - e. National Wetland Inventory (NWI) (USFWS website accessed June 12, 2023)
 - f. National Hydrologic Dataset (NHD) – 12100405 Aransas Bay
 - g. ORM2 Database – no previous jurisdictional determinations for this review area
 - h. FEMA flood map – 48007C0125G, eff. February 17, 2016
 - i. South Texas Lidar 2018 (sources: TNRIS DataHub, NOAA Digital Coast)

10. OTHER SUPPORTING INFORMATION.

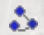

N/A

11. NOTE: The structure and format of this MFR were developed in coordination with the EPA and Department of the Army. The MFR's structure and format may be subject to future modification or may be rescinded as needed to implement additional guidance from the agencies; however, the approved jurisdictional determination described herein is a final agency action.

SWG-2023-00282

VICINITY and FLOWPATH
Review area connects to
Copano Bay through a series
of culverted drainage ditches.

Legend

-  Flow Path
-  Review Area

HOLIDAY BEACH
Aransas County, TX

28.165793 -97.010672

COPANO BAY

SH 35




3000 ft

SWG-2023-00282

Wetland Delineation

Wet1: 0.34-ac

Legend

 Wet1

28.165793 -97.010672

Google Earth

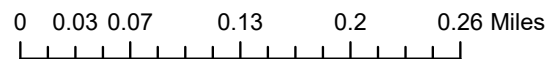
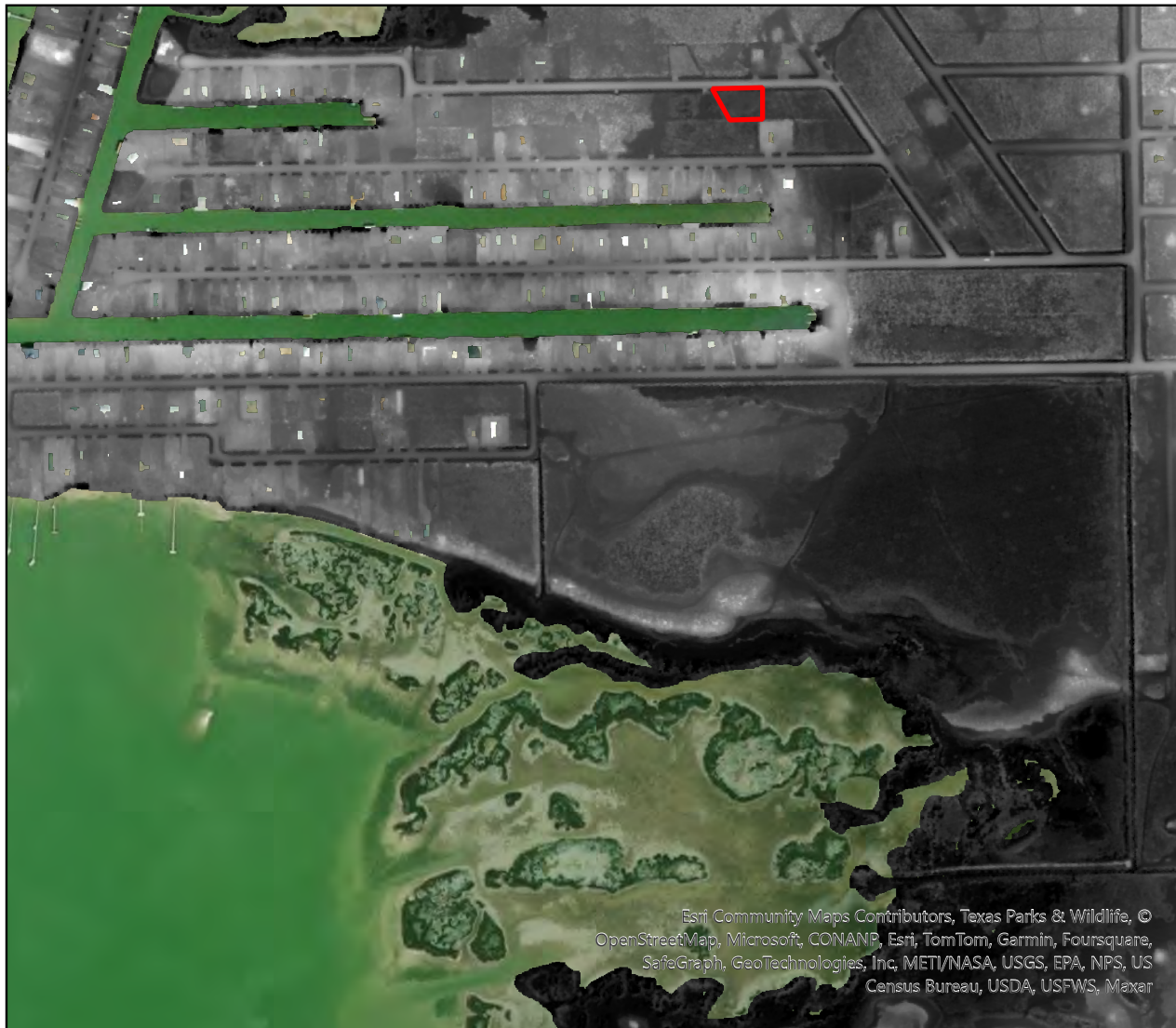
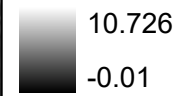
300 ft



SWG-2023-00282 DEM

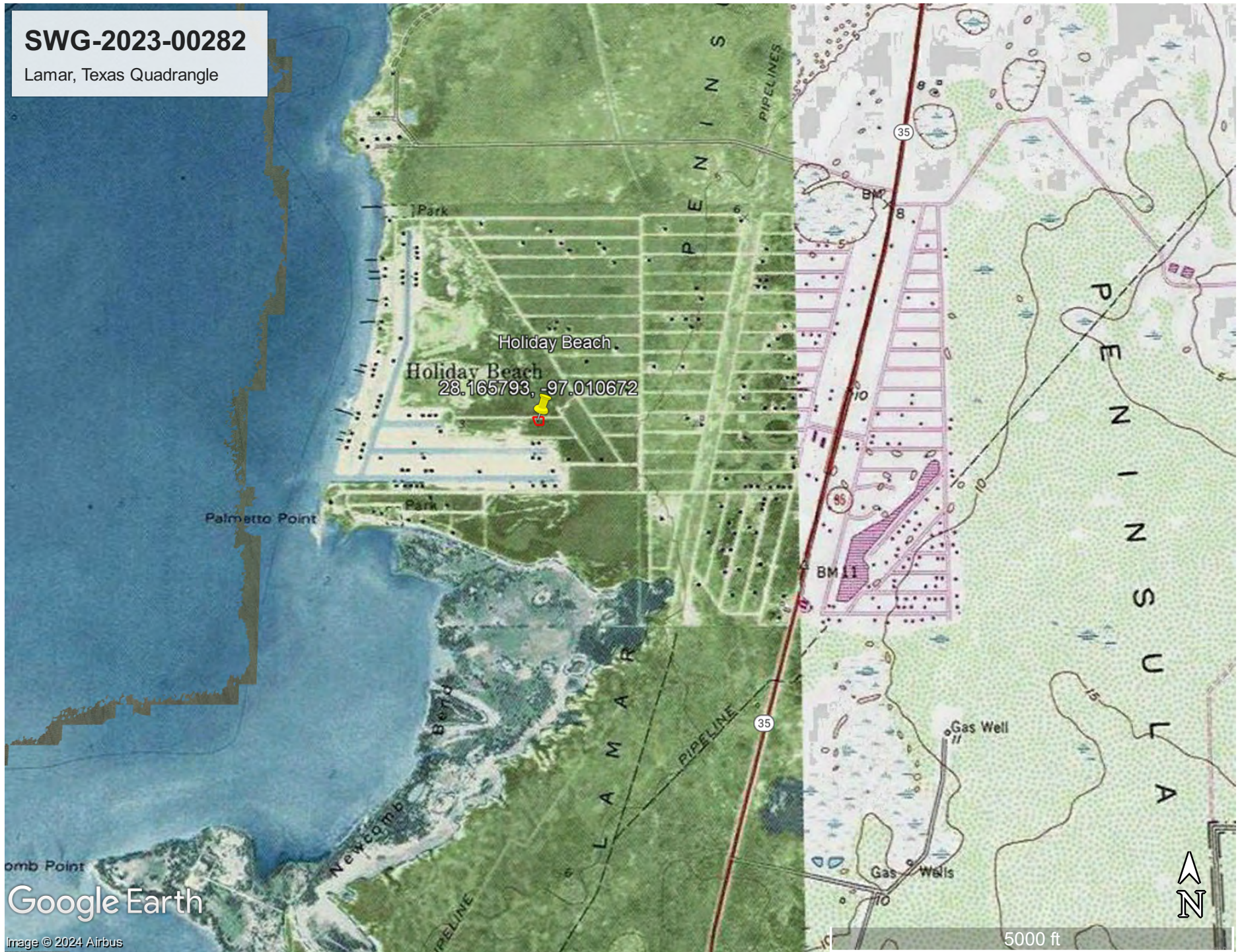
Review Area:
28.168793 -97.010672

Elevation (feet)



SWG-2023-00282

Lamar, Texas Quadrangle



Google Earth

Image © 2024 Airbus