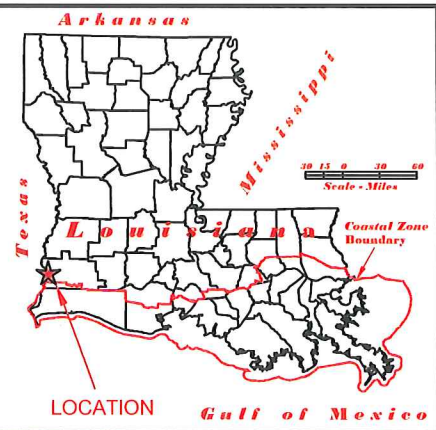
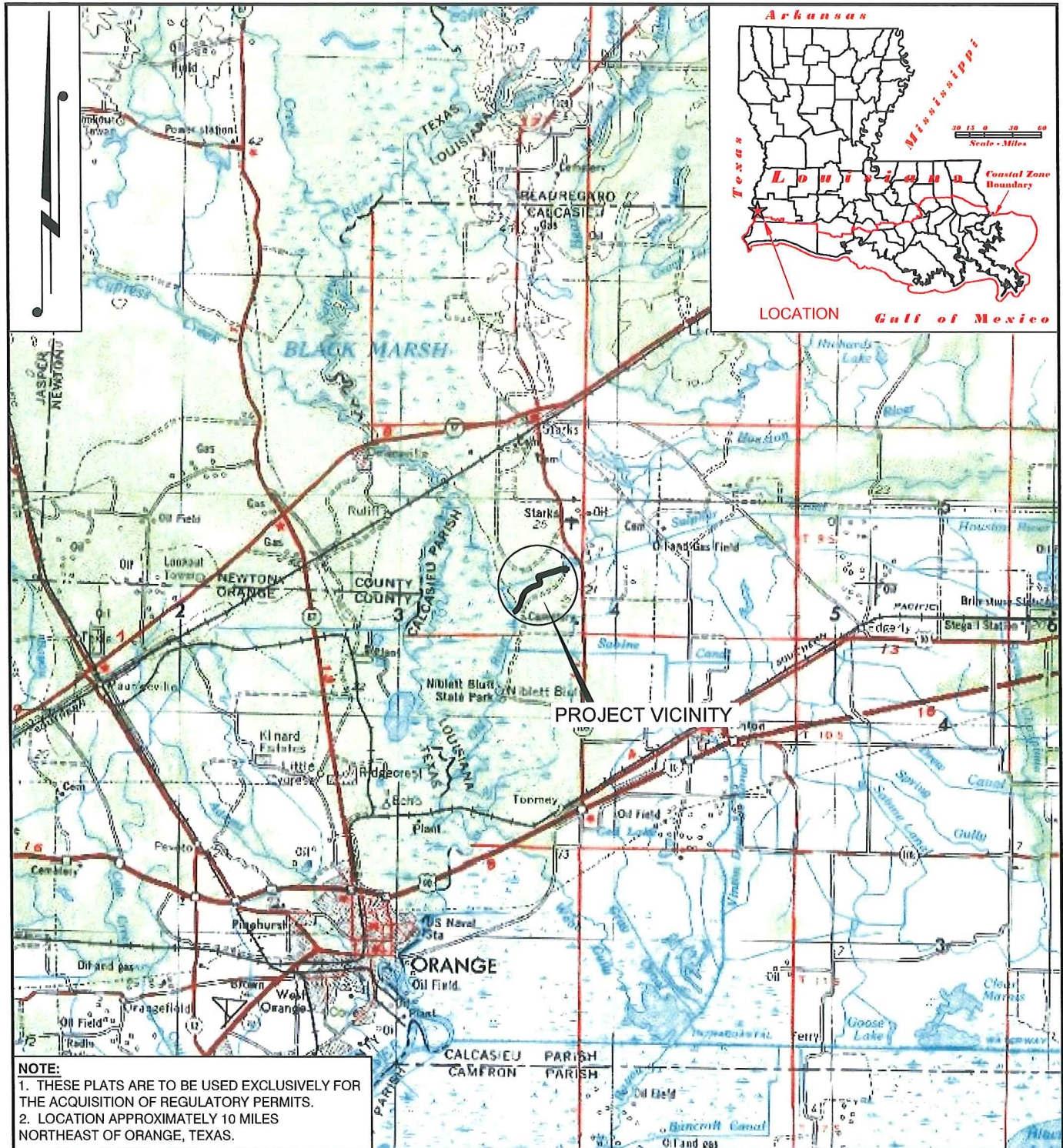
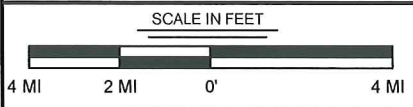


FEB 03 2017



NOTE:
 1. THESE PLATS ARE TO BE USED EXCLUSIVELY FOR THE ACQUISITION OF REGULATORY PERMITS.
 2. LOCATION APPROXIMATELY 10 MILES NORTHEAST OF ORANGE, TEXAS.

DRAWN BY:	AZB	APPROVED BY:	SPM
DATE:	01/19/17	JOB NO:	2016.0201
DRAWING NAME:	160201_COE_1.DWG		
SHEET NO:	1	OF	6
PROJECTION:	LOUISIANA SOUTH ZONE		
GEO. DATUM:	NAD83 (2011)		
VERT. DATUM:	NAVD88		
GRID UNITS:	US SURVEY FEET		



VICINITY MAP

SABINE RIVER AUTHORITY, STATE OF LOUISIANA

PROPOSED DREDGING FOR THE
 SABINE RIVER DIVERSION CANAL #1
 SECTIONS 25, 26, 34 & 35, T9S-R13W
 CALCASIEU PARISH, LOUISIANA

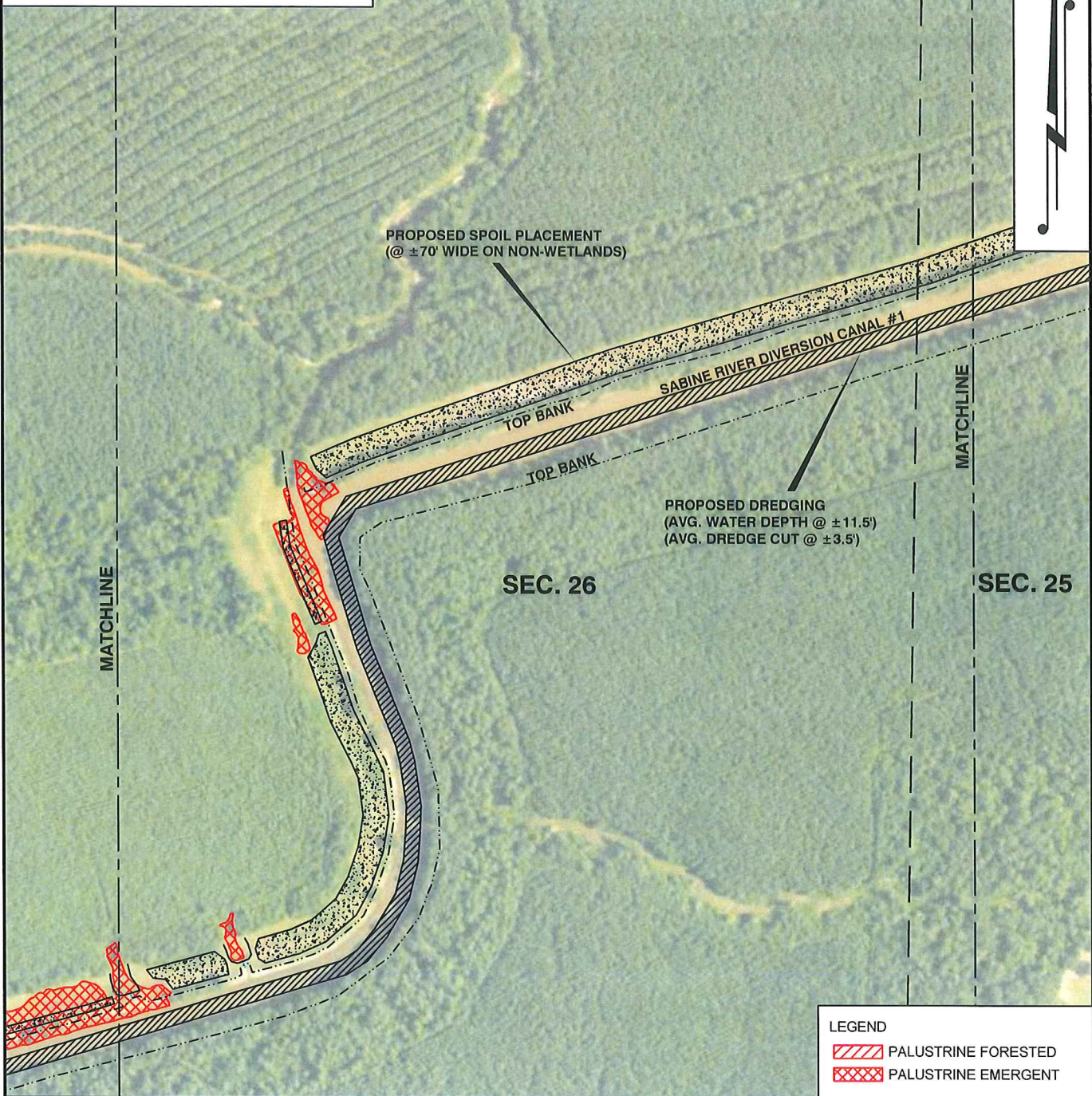
TBS	T. BAKER SMITH SOLUTIONS START HERE 107 Global Circle, Lafayette, LA 70503 (337) 715-2800 - tbsmith.com	REV. NO:	00	REV. DATE:	--/--	REV. BY:	--
		REVISION DESCRIPTION: --					

1/20/2017 - P:\Y-2016\2016.0201\DWG\COE PLATS\160201_COE_1.DWG

P:\Y-2016\2016.0201\DWG\COE PLATS\160201_COE_2.DWG

NOTE:

1. THESE PLATS ARE TO BE USED EXCLUSIVELY FOR THE ACQUISITION OF REGULATORY PERMITS.
2. LOCATION APPROXIMATELY 10 MILES NORTHEAST OF ORANGE, TEXAS.

T 9 S - R 13 W**LEGEND**

- PALUSTRINE FORESTED
 PALUSTRINE EMERGENT

DRAWN BY: AZB APPROVED BY: SPM

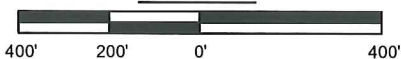
DATE: 01/19/17 JOB NO: 2016.0201

DRAWING NAME: 160201_COE_2.DWG

SHEET NO: 3 OF 6

 PROJECTION: LOUISIANA SOUTH ZONE
 GEO. DATUM: NAD83 (2011) | VERT. DATUM: NAVD88
 GRID UNITS: US SURVEY FEET

SCALE IN FEET

**AERIAL VIEW****SABINE RIVER AUTHORITY, STATE OF LOUISIANA**

PROPOSED DREDGING FOR THE
 SABINE RIVER DIVERSION CANAL #1
 SECTIONS 25, 26, 34 & 35, T9S-R13W
 CALCASIEU PARISH, LOUISIANA



T. BAKER SMITH
 SOLUTIONS START HERE
 107 Global Circle, Lafayette, LA 70503
 (337) 735-2800 - tbsmith.com

REV. NO: 00 REV. DATE: --/-- REV. BY: --

REVISION DESCRIPTION:

--

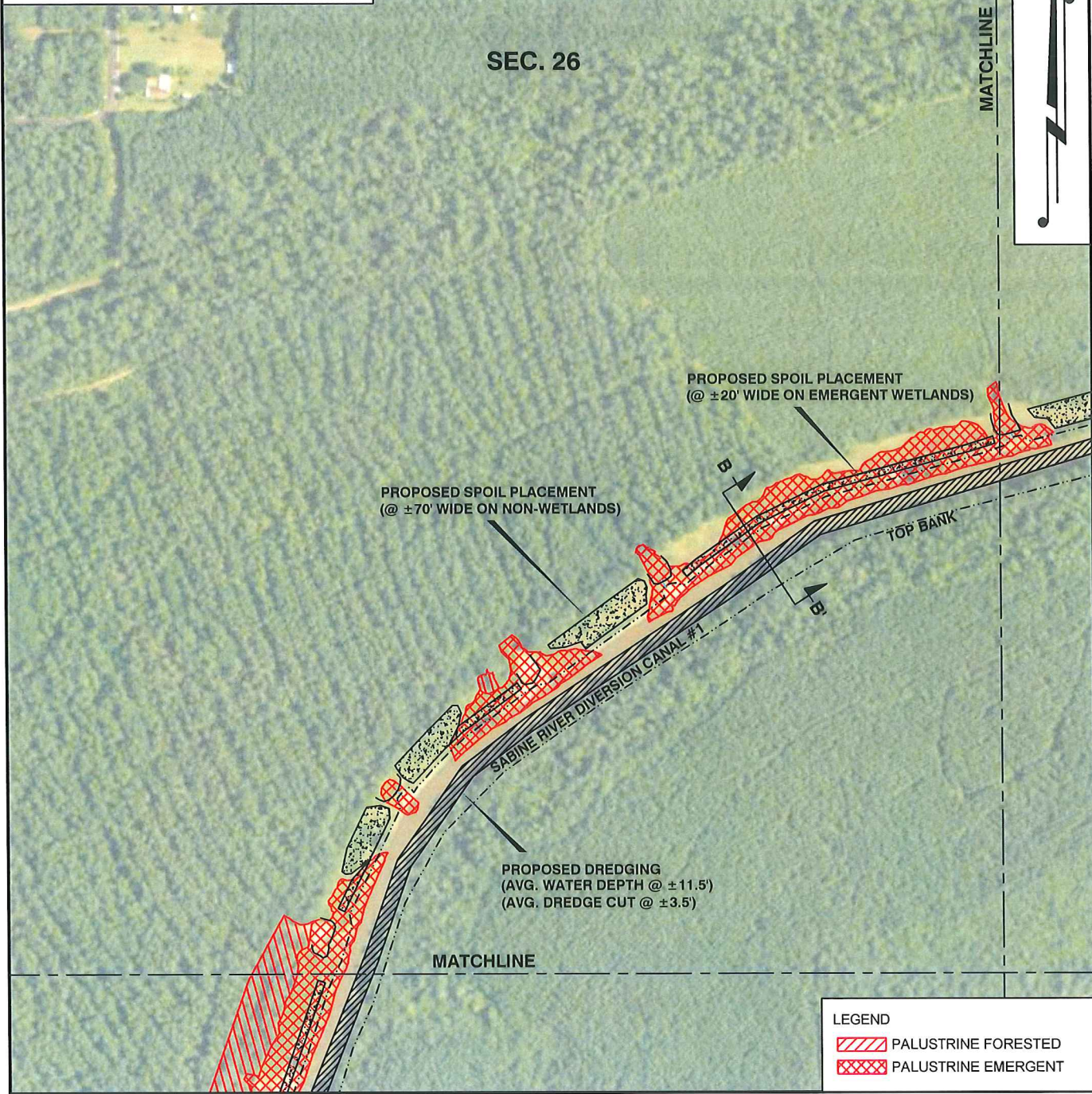
NOTE:

1. THESE PLATS ARE TO BE USED EXCLUSIVELY FOR THE ACQUISITION OF REGULATORY PERMITS.
2. LOCATION APPROXIMATELY 10 MILES NORTHEAST OF ORANGE, TEXAS.

T 9 S - R 13 W


SEC. 26

MATCHLINE



LEGEND

- PALUSTRINE FORESTED
- PALUSTRINE EMERGENT

DRAWN BY:	AZB	APPROVED BY:	SPM
DATE:	01/19/17	JOB NO:	2016.0201
DRAWING NAME:	160201_COE_2.DWG		
SHEET NO:	4	OF	6
PROJECTION: LOUISIANA SOUTH ZONE			
GEO. DATUM: <small>NAD83 (2011)</small> VERT. DATUM: NAVD88			
GRID UNITS: US SURVEY FEET			
SCALE IN FEET			
			
400'	200'	0'	400'

AERIAL VIEW

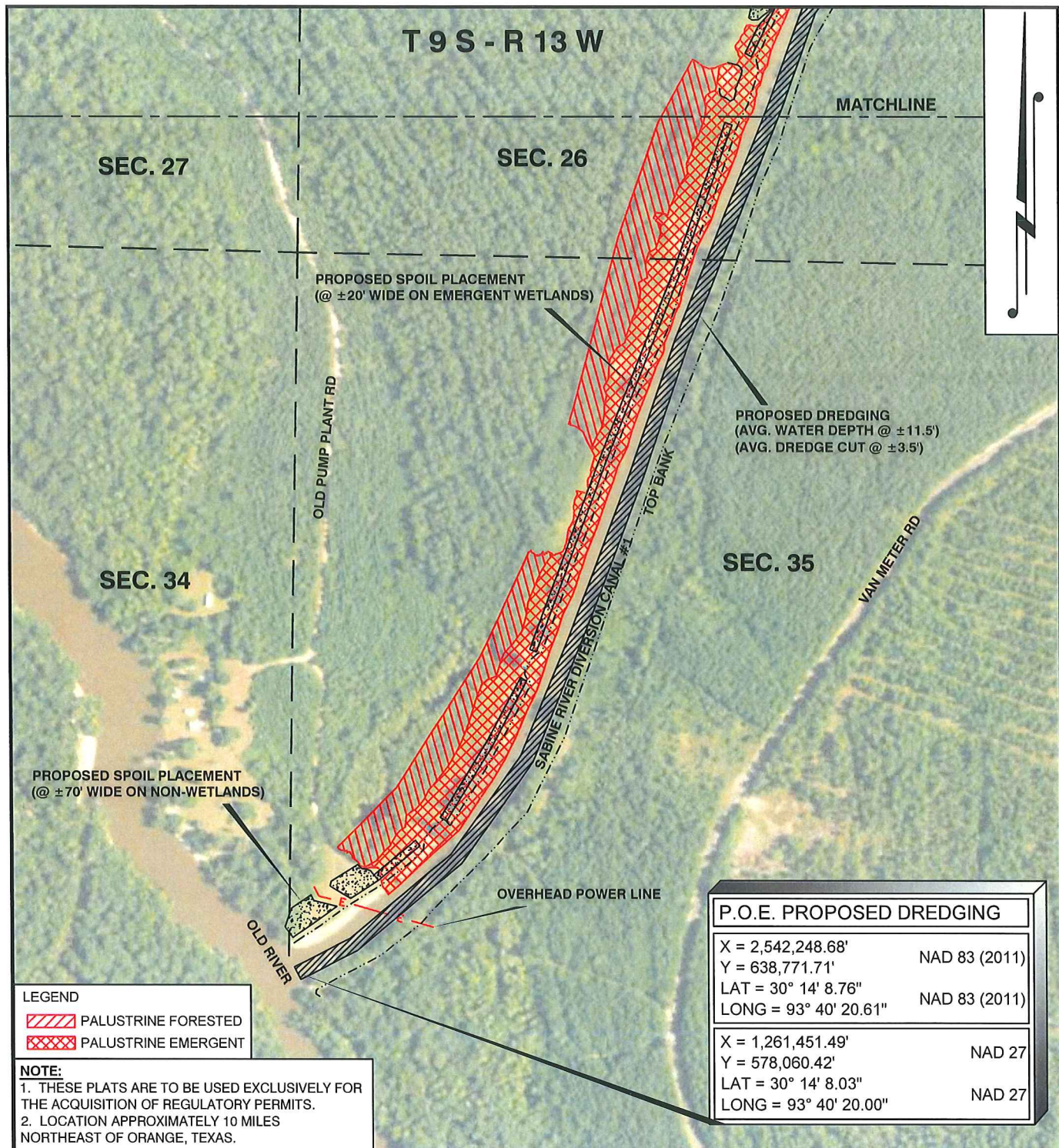
SABINE RIVER AUTHORITY, STATE OF LOUISIANA

**PROPOSED DREDGING FOR THE
SABINE RIVER DIVERSION CANAL #1
SECTIONS 25, 26, 34 & 35, T9S-R13W
CALCASIEU PARISH, LOUISIANA**



T. BAKER SMITH
SOLUTIONS START HERE
107 Global Circle, Lafayette, LA 70503
(337) 735-2800 - tbsmith.com

REV. NO:	00	REV. DATE:	--/--	REV. BY:	--
REVISION DESCRIPTION:					
--					



DRAWN BY: AZB APPROVED BY: SPM

DATE: 01/19/17 JOB NO: 2016.0201

DRAWING NAME: 160201_COE_2.DWG

SHEET NO: 5 OF 6

PROJECTION: LOUISIANA SOUTH ZONE
GEO. DATUM: NAD83 (2011) | VERT. DATUM: NAVD88
GRID UNITS: US SURVEY FEET

SCALE IN FEET

**AERIAL VIEW****SABINE RIVER AUTHORITY, STATE OF LOUISIANA**

**PROPOSED DREDGING FOR THE
SABINE RIVER DIVERSION CANAL #1
SECTIONS 25, 26, 34 & 35, T9S-R13W
CALCASIEU PARISH, LOUISIANA**

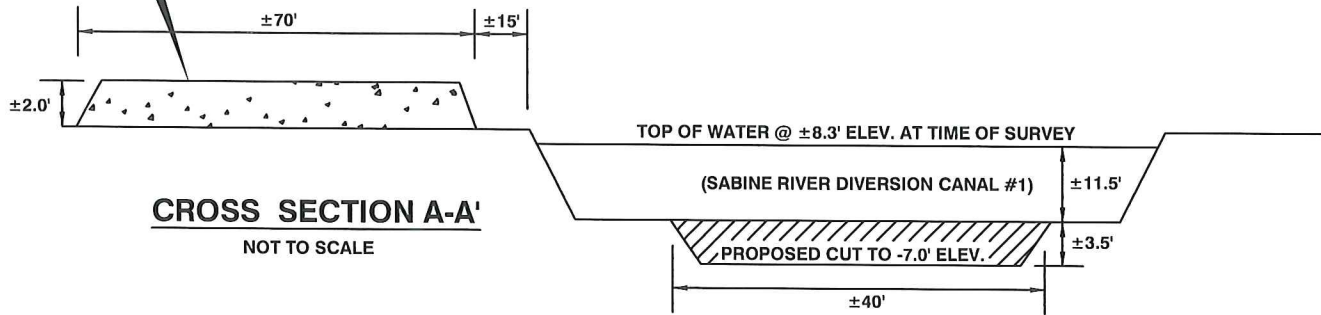


T. BAKER SMITH
SOLUTIONS START HERE
107 Global Circle, Lafayette, LA 70503
(337) 35-2800 - tbsmith.com

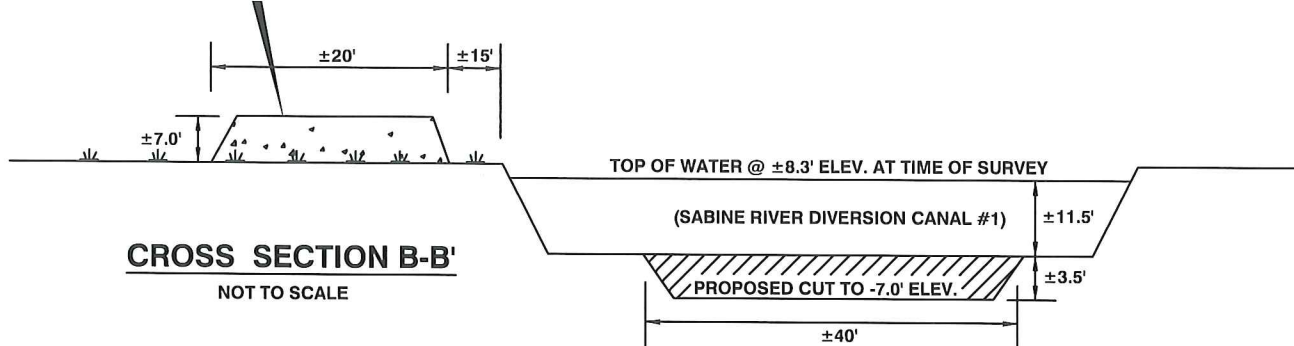
REV. NO: 00 REV. DATE: --/-- REV. BY: --

REVISION DESCRIPTION:

PROPOSED SPOIL PLACEMENT OVER NON-WETLANDS



PROPOSED SPOIL PLACEMENT OVER EMERGENT WETLANDS



APPROXIMATELY 57,880 CU YDS OF MATERIAL TO BE DISPLACED DUE TO PROPOSED DREDGING.

APPROXIMATELY 10.25 ACRES OF WATER BOTTOMS TO BE IMPACTED DUE TO PROPOSED DREDGING.

APPROXIMATELY 9.81 ACRES OF NON-WETLANDS TO BE IMPACTED DUE TO PROPOSED SPOIL PLACEMENT.

APPROXIMATELY 1.75 ACRES OF EMERGENT WETLANDS TO BE IMPACTED DUE TO PROPOSED SPOIL PLACEMENT.

NOTE:

1. THESE PLATS ARE TO BE USED EXCLUSIVELY FOR THE ACQUISITION OF REGULATORY PERMITS.
2. LOCATION APPROXIMATELY 10 MILES NORTHEAST OF ORANGE, TEXAS.

DRAWN BY: AZB APPROVED BY: SPM

DATE: 01/19/17 JOB NO: 2016.0201

DRAWING NAME: 160201_COE_2.DWG

SHEET NO: 6 OF 6

PROJECTION: LOUISIANA SOUTH ZONE
GEO. DATUM: NAD83 (2011) VERT. DATUM: NAVD88
GRID UNITS: US SURVEY FEET

SCALE IN FEET

400' 200' 0' 400'

TYPICALS**SABINE RIVER AUTHORITY, STATE OF LOUISIANA**

PROPOSED DREDGING FOR THE
SABINE RIVER DIVERSION CANAL #1
SECTIONS 25, 26, 34 & 35, T9S-R13W
CALCASIEU PARISH, LOUISIANA



T. BAKER SMITH
SOLUTIONS START HERE
107 Global Circle, Lafayette, LA 70503
(337) 735-2800 - tbsmith.com

REV. NO: 00 REV. DATE: --/-- REV. BY: --

REVISION DESCRIPTION:

--