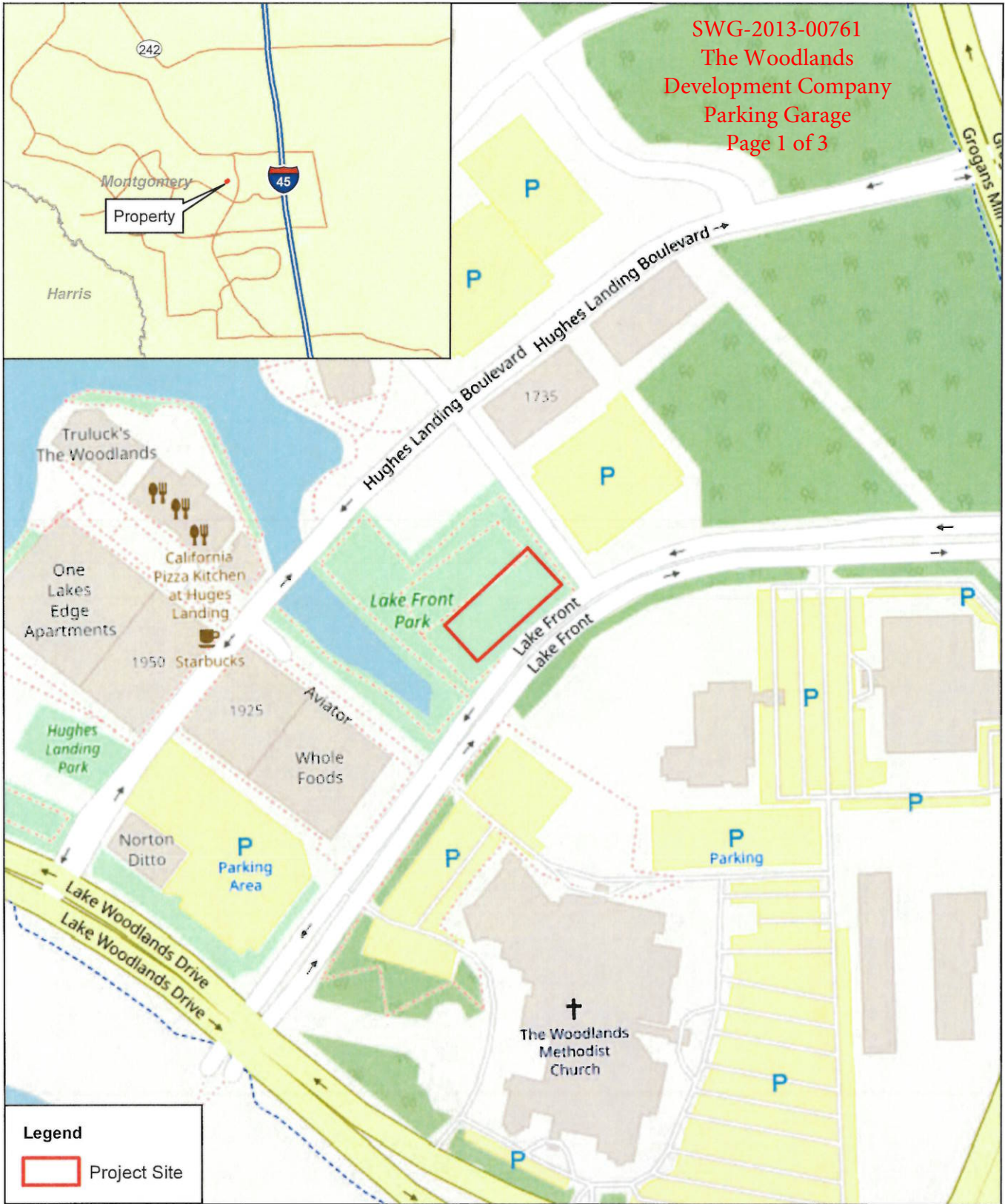


SWG-2013-00761  
 The Woodlands  
 Development Company  
 Parking Garage  
 Page 1 of 3

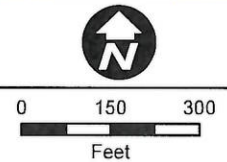


**Legend**  
 Project Site

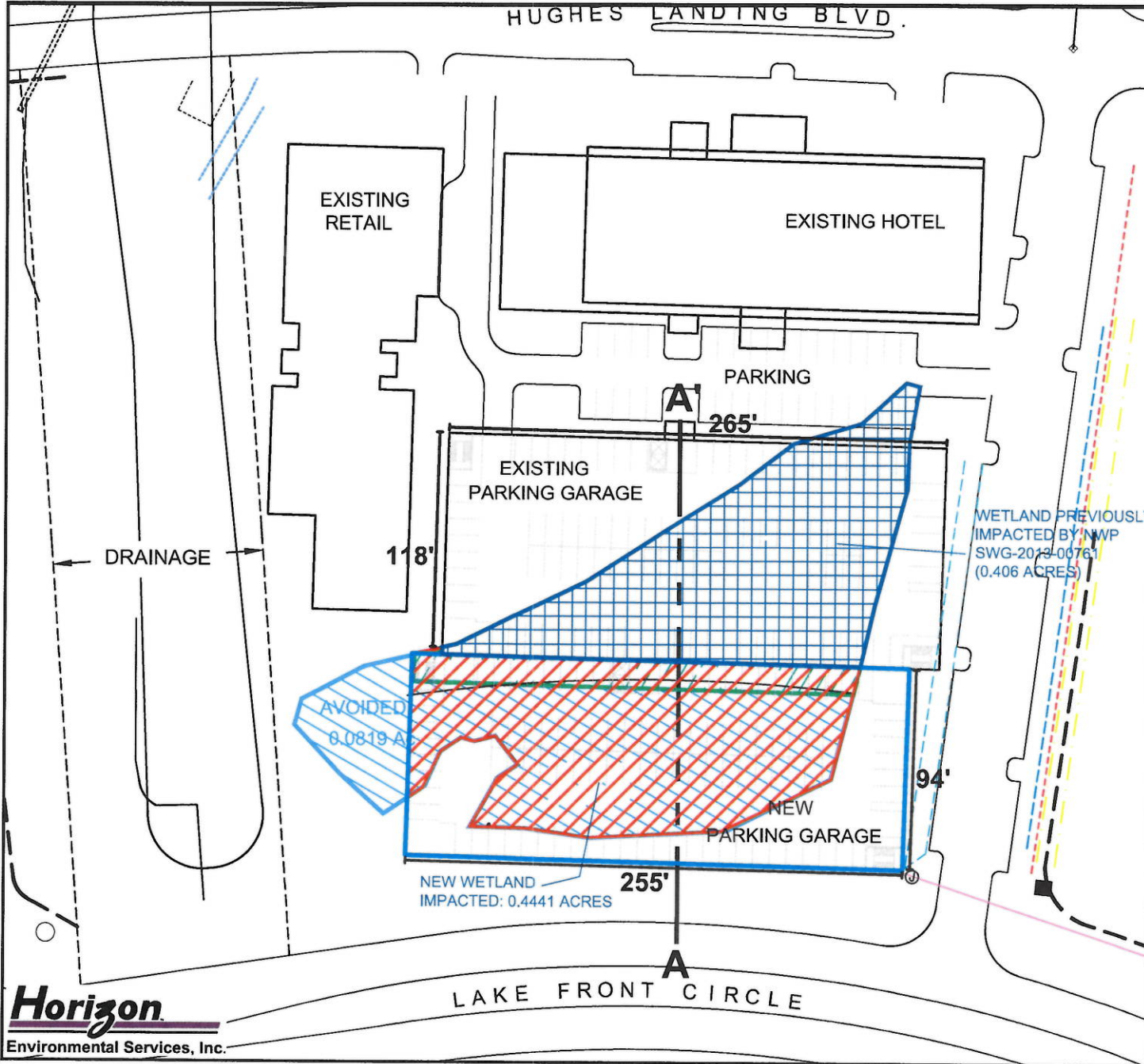
**Horizon**  
 Environmental Services, Inc.

Date:	11/01/2017
Drawn:	TED
HJN NO:	160222
Source:	OSM, 2017

**Figure 1**  
 Vicinity Map  
 Hughes Landing, Parcel X  
 The Woodlands, Montgomery County, TX



"Do Not Scale This Drawing"



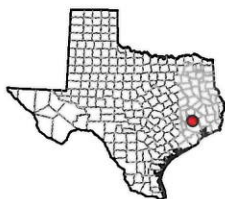
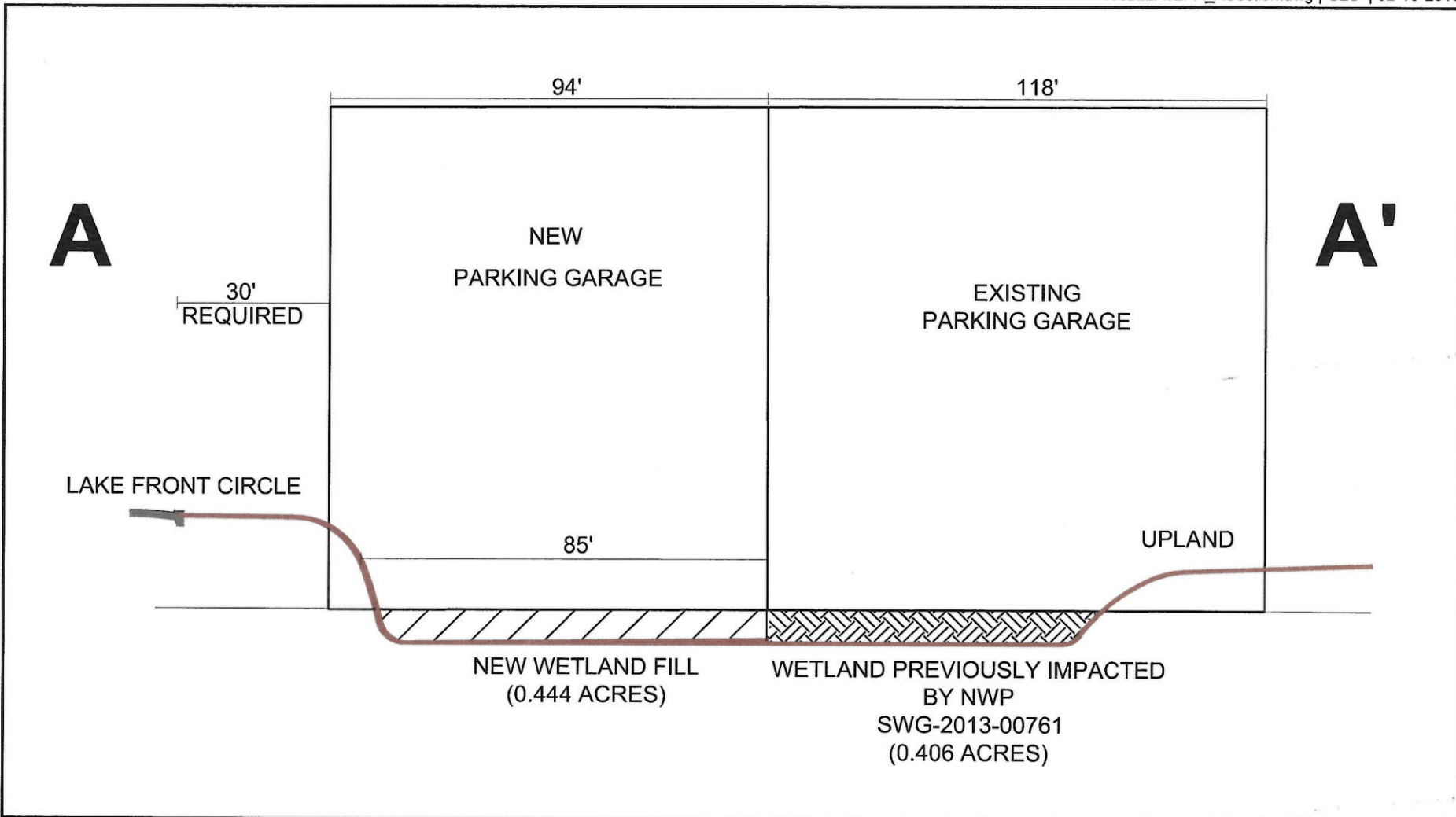
MAP SOURCE:  
PROVIDED BY CLIENT (OCTOBER 2016)



SWG-2013-00761  
The Woodlands  
Development Company  
Parking Garage  
Page 2 of 3

**FIGURE 2 OF 3**  
WETLAND IMPACTS  
HUGHES LANDING, PARCEL X  
PARKING GARAGE  
MONTGOMERY COUNTY,  
TEXAS





NOT TO SCALE

SWG-2013-00761  
 The Woodlands  
 Development Company  
 Parking Garage  
 Page 3 of 3

**FIGURE 3 OF 3**  
 CROSS SECTION A-A'  
 HUGHES LANDING, PARCEL X  
 PARKING GARAGE  
 MONTGOMERY COUNTY,  
 TEXAS