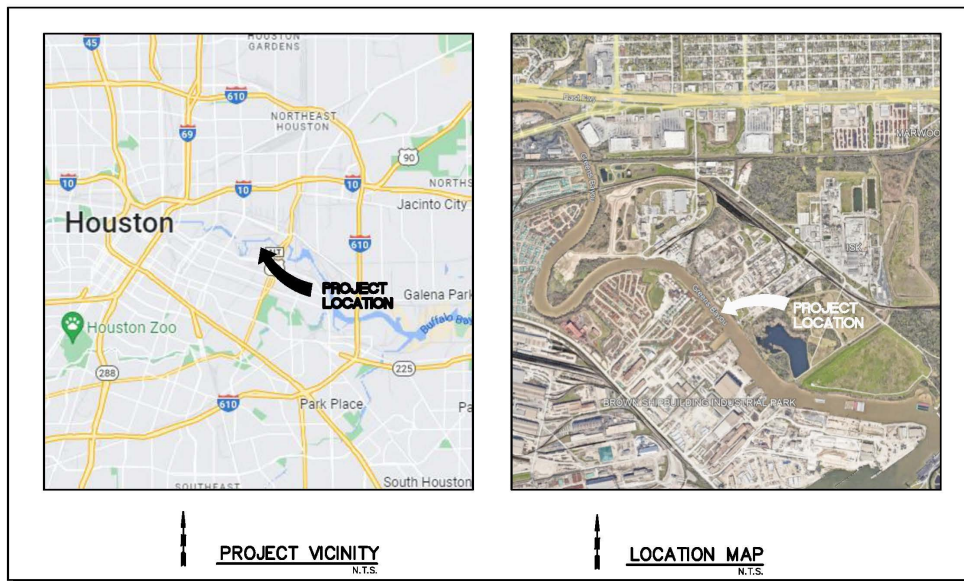


Permit Modification of Barge Fleeting Area Adjacent to Greens Bayou

14000 Industrial Holdings, LLC
SWG-1993-01047



PRINT DATE:
Thursday, October 13, 2022
2:57pm

INDEX OF DRAWINGS

DWG NO.	DESCRIPTION
A1	EXISTING SITE PLAN
A2	BARGE LAYOUT SITE PLAN
A3	DREDGE SITE PLAN
A4	BULKHEAD SITE PLAN
A5	BULKHEAD CROSS SECTIONS (1 OF 2)
A6	BULKHEAD CROSS SECTIONS (2 OF 2)

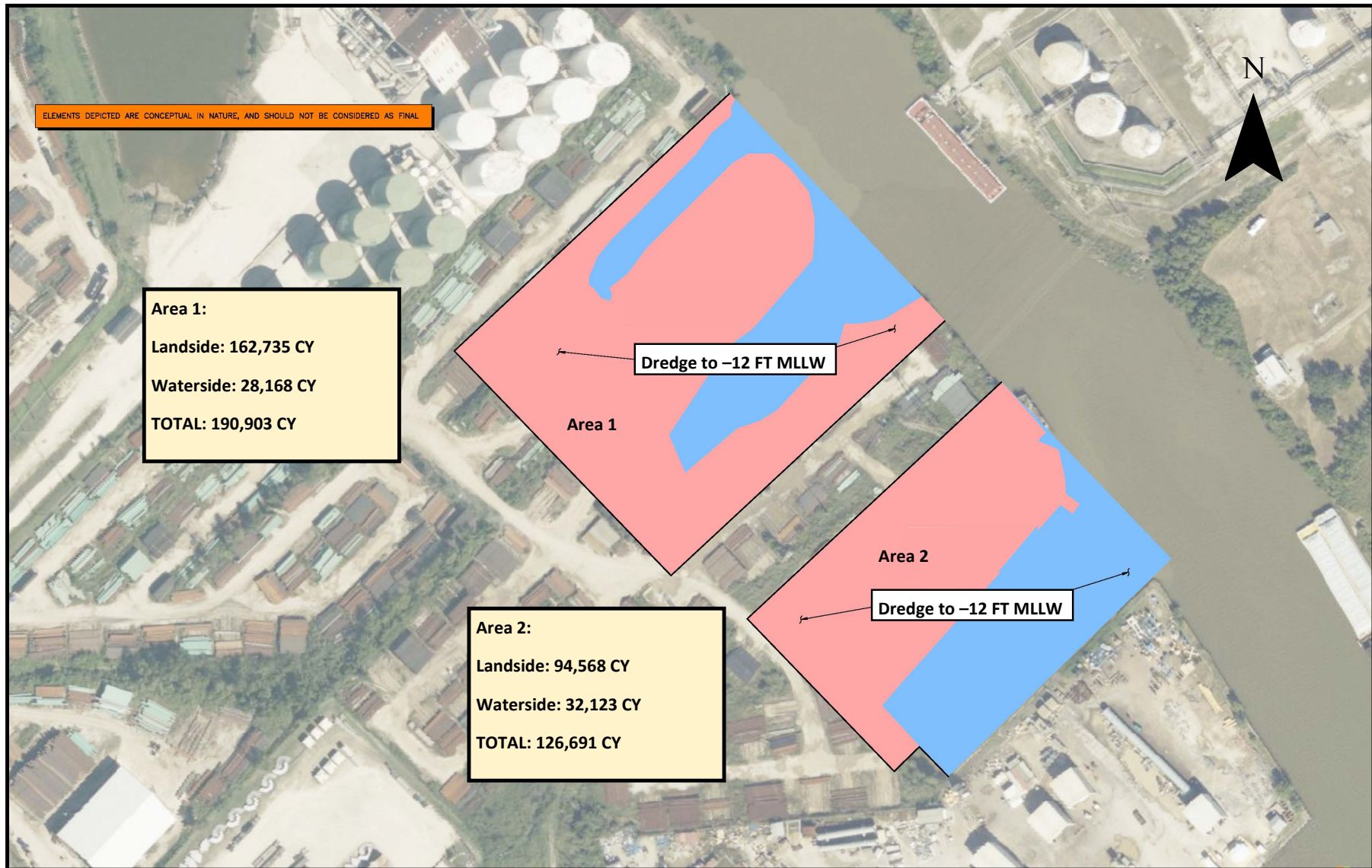
14000 Industrial Holdings, LLC SWG-1993-01047



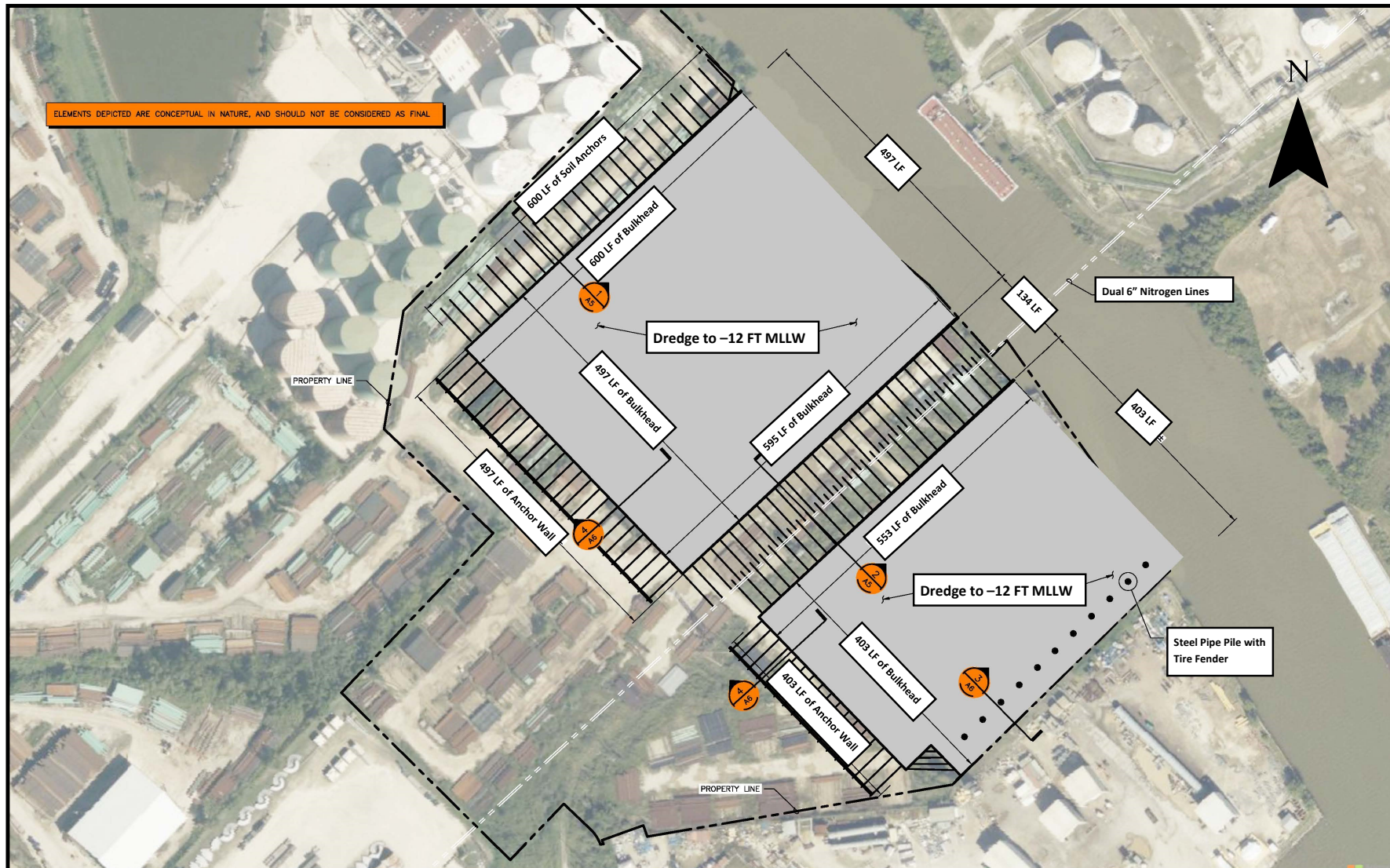
14000 Industrial Holdings, LLC
SWG-1993-01047



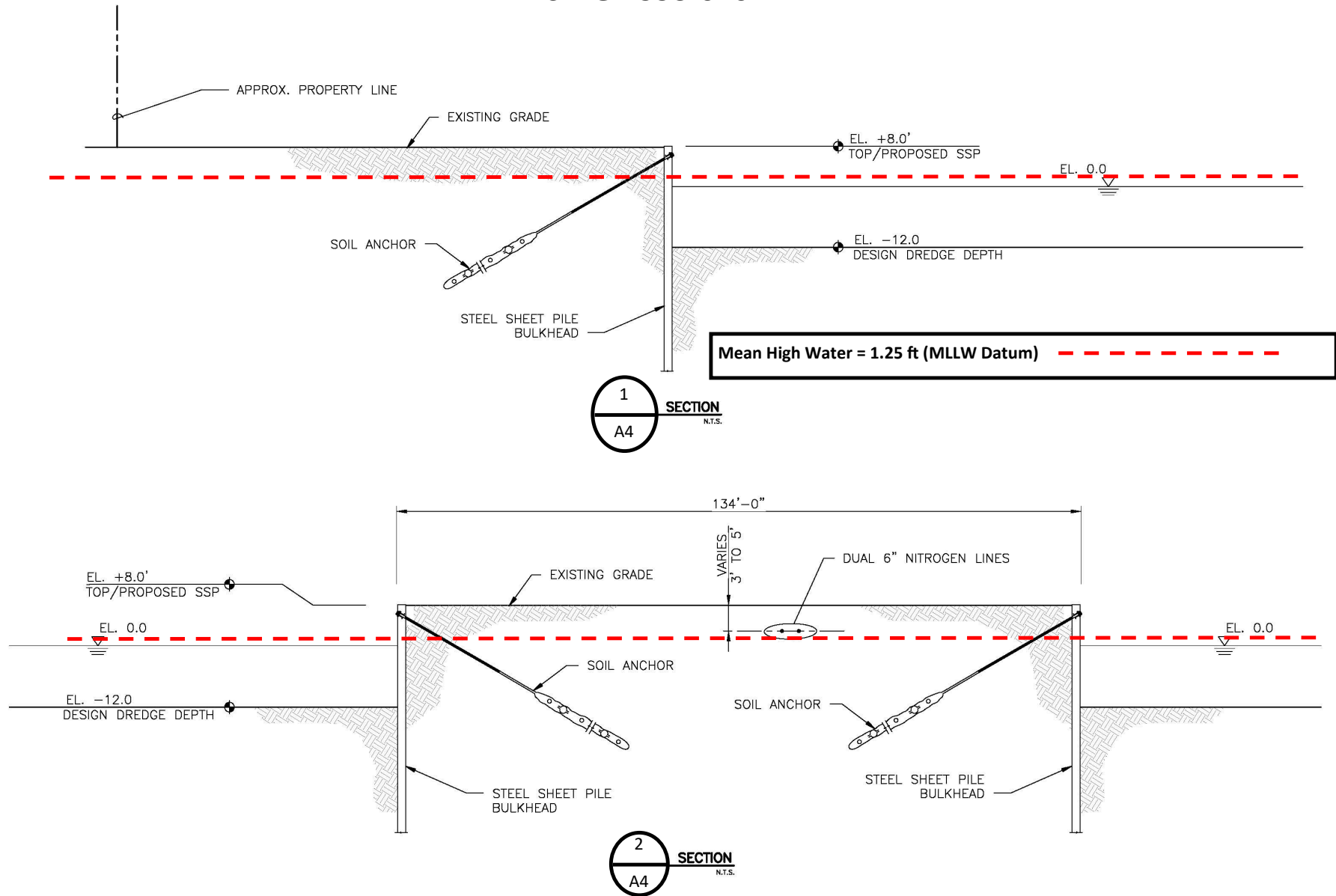
14000 Industrial Holdings, LLC SWG-1993-01047



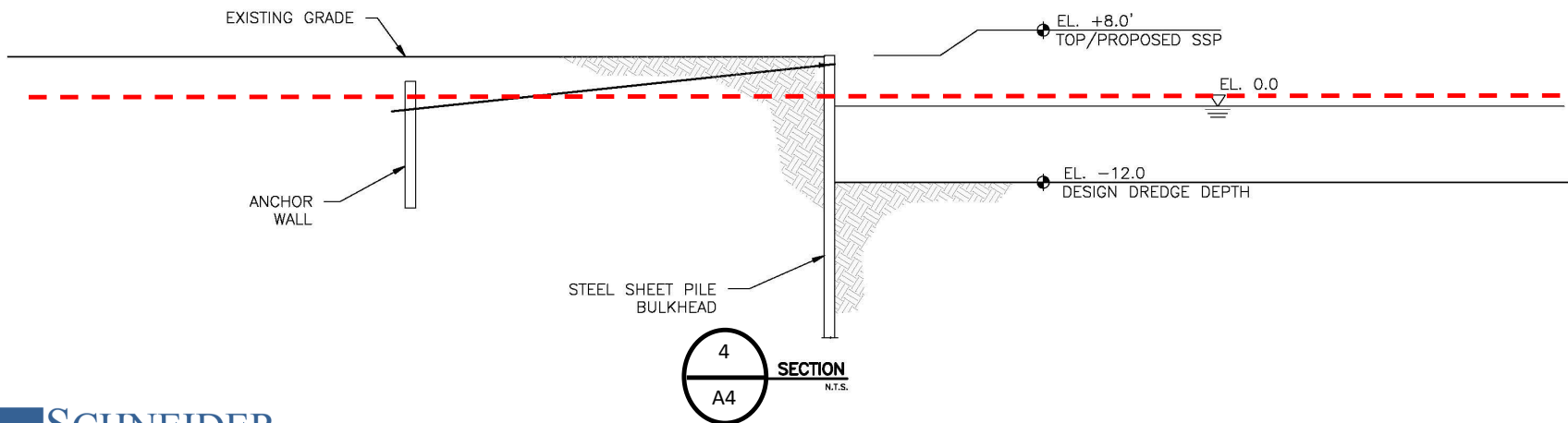
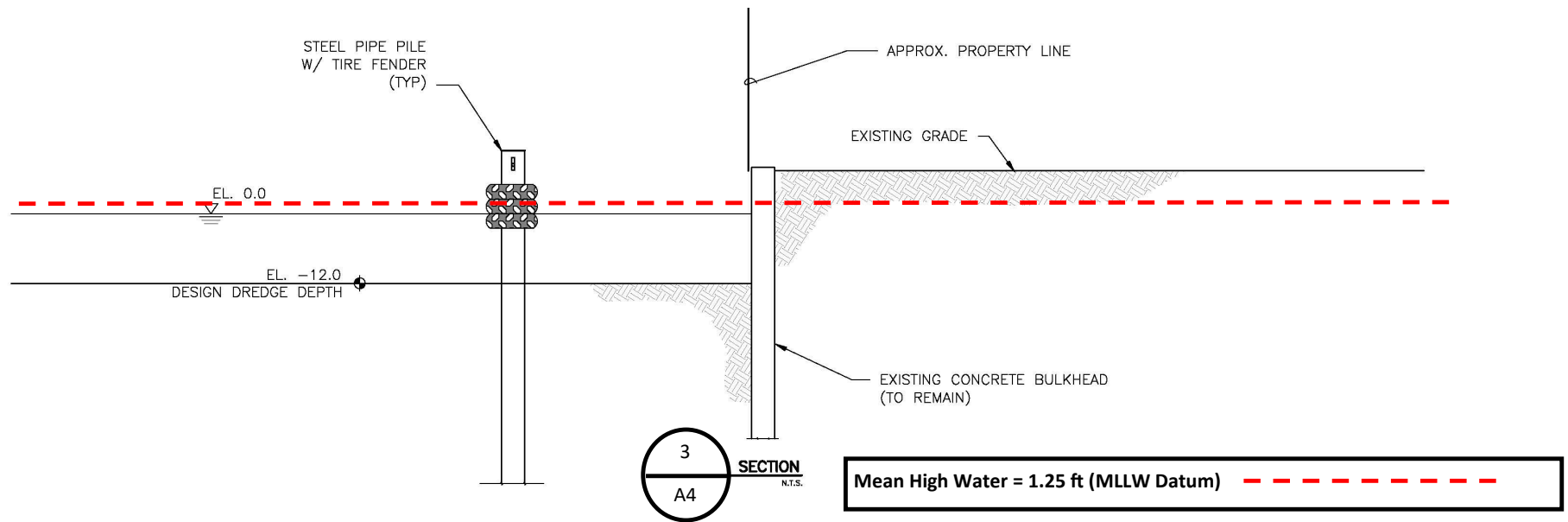
14000 Industrial Holdings, LLC SWG-1993-01047



14000 Industrial Holdings, LLC SWG-1993-01047



14000 Industrial Holdings, LLC SWG-1993-01047



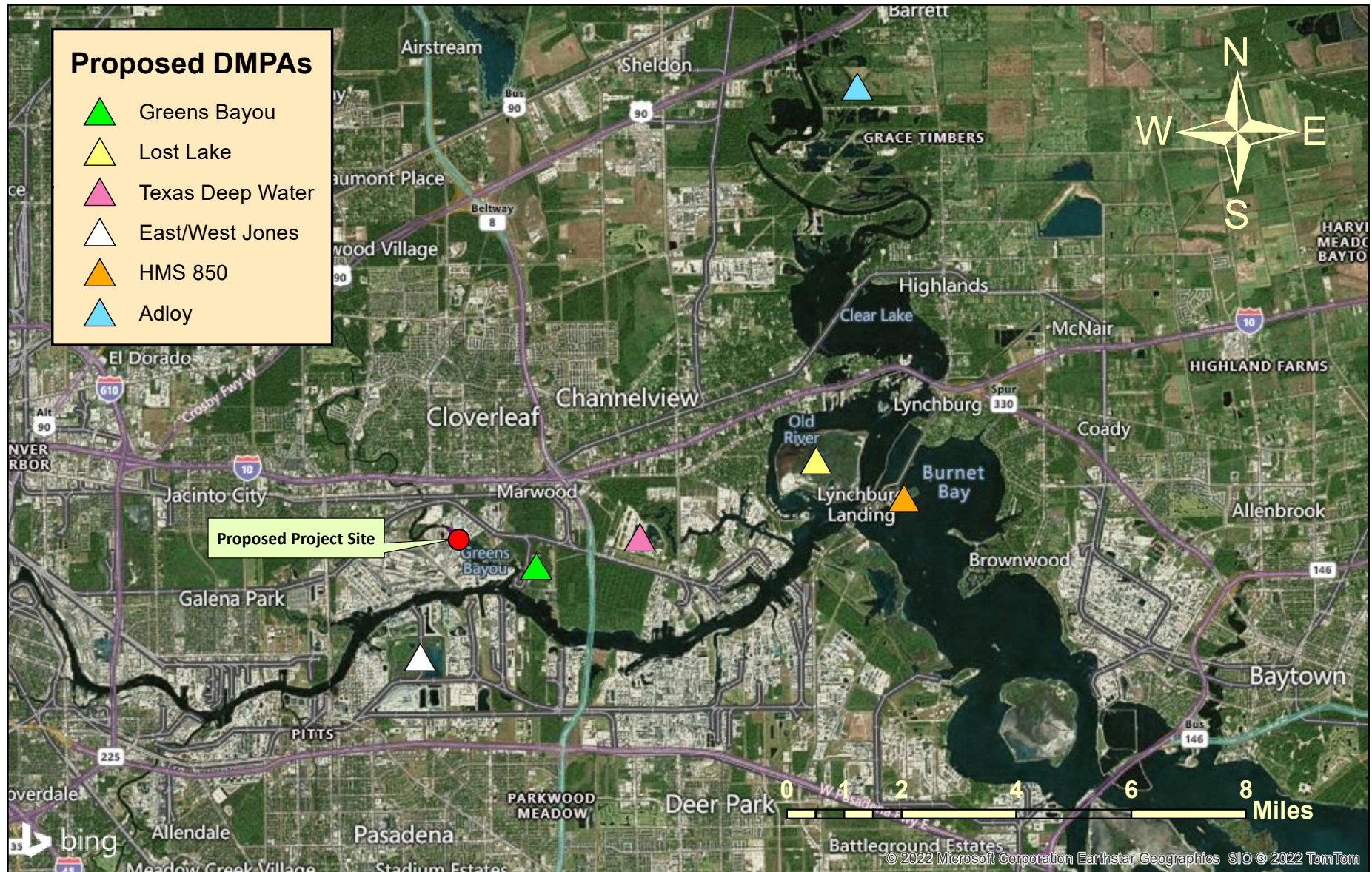



Exhibit C	14000 Industrial Holdings, LLC SWG-1993-01047 Harris County, Texas	
Vicinity Map and DMPA Locations	Date: December 2, 2022	