

Sources: Esri, HERE, DeLorme, USGS, Intermap, increment P Corp., NRCAN, Esri Japan, METI, Esri China (Hong Kong), Esri (Thailand), TomTom, MapmyIndia, © OpenStreetMap contributors, and the GIS User Community

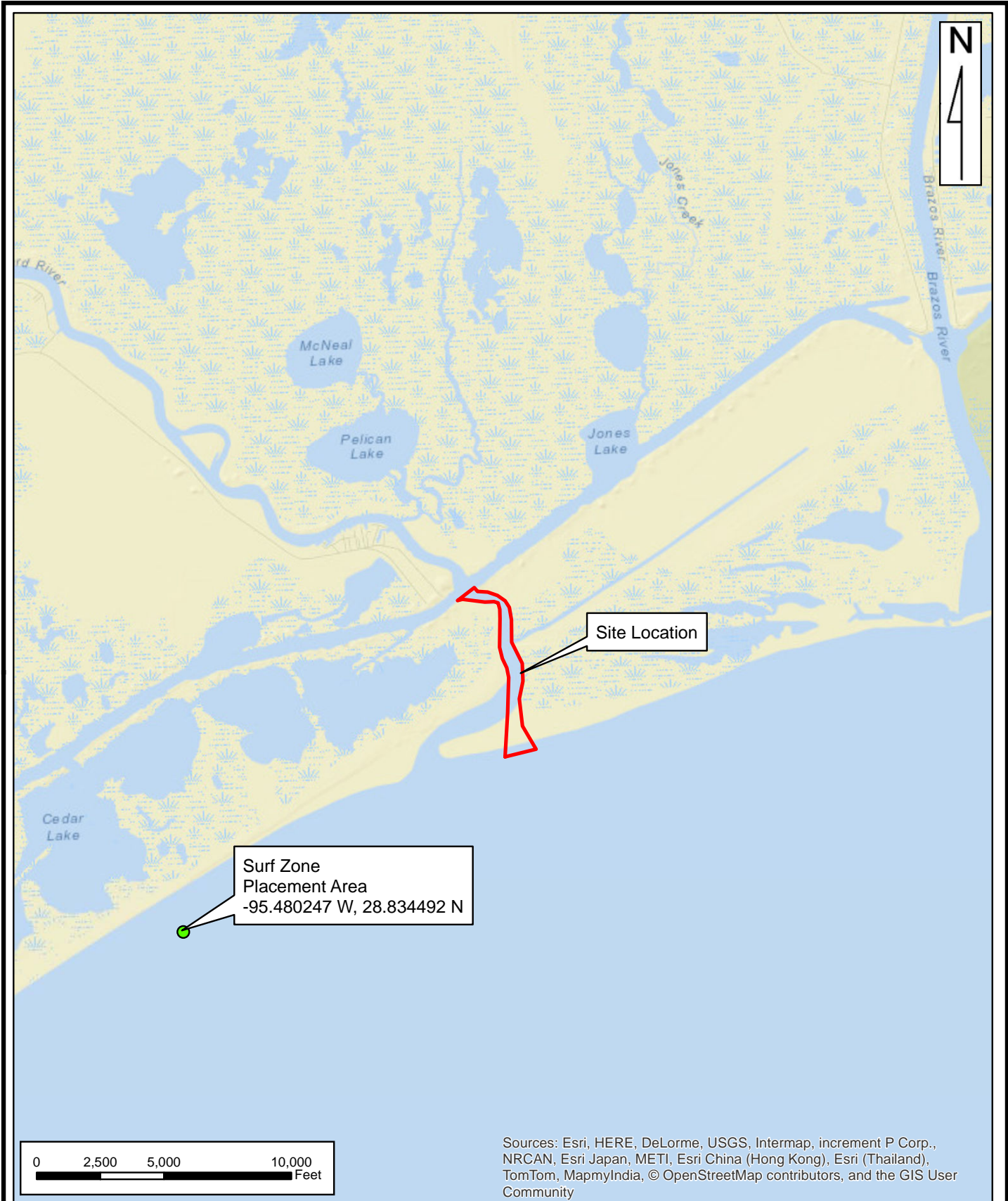
SITE VICINITY MAP

Project #: 9335N-IP
 For: Brazoria County Engineering Department
 Location: San Bernard River and GICWW
 Brazoria County, Texas

REVISIONS
April 28, 2017 by MDE

BERG•OLIVER ASSOCIATES, INC.
 ENVIRONMENTAL SCIENCE & LAND USE CONSULTANTS
 14701 ST. MARY'S LANE, SUITE 400
 HOUSTON, TEXAS 77079 PHONE (281)589-0898 <http://www.bergoliver.com>





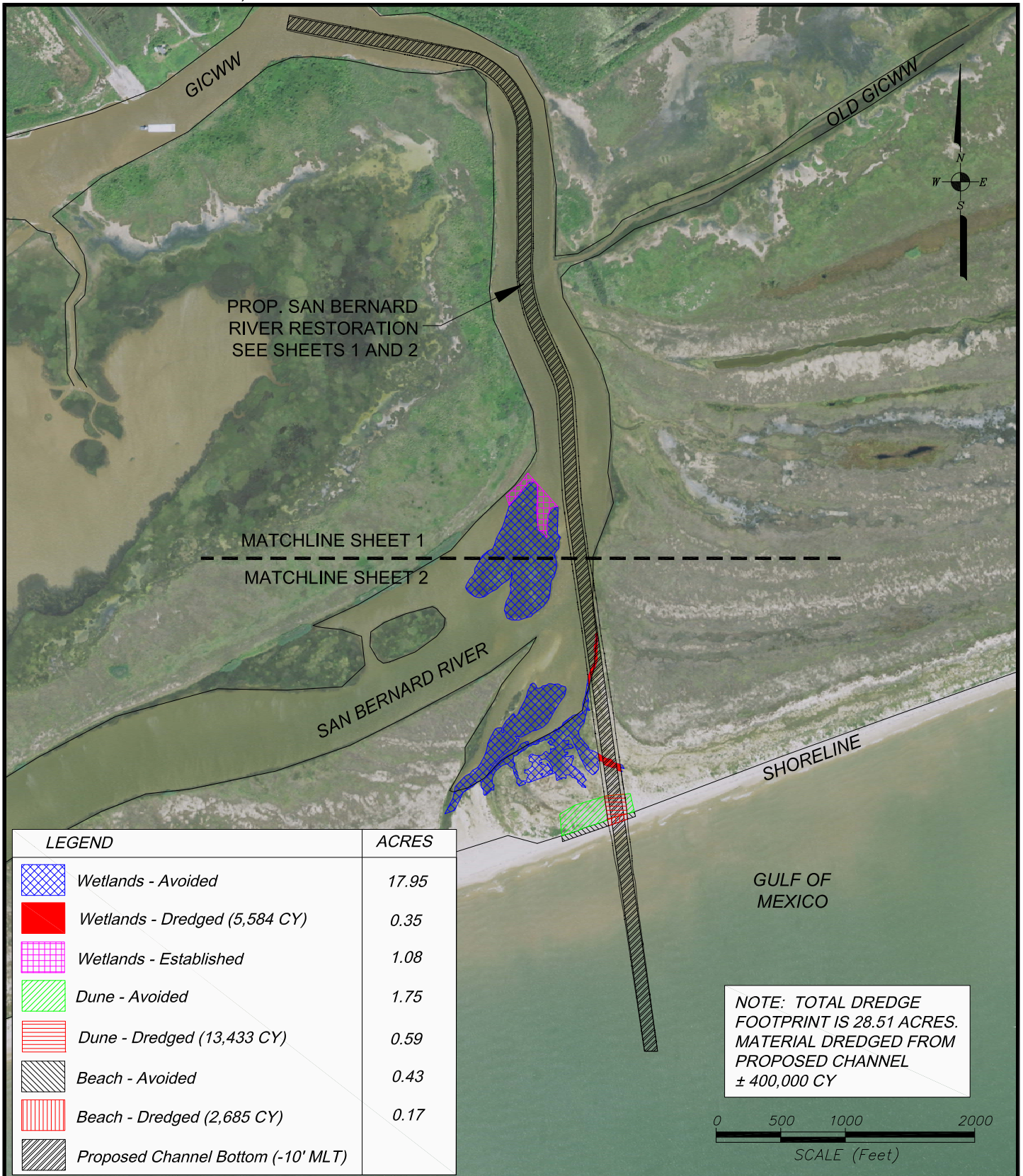
SITE LOCATION MAP

Project #: 9335N-IP
 For: Brazoria County Engineering Department
 Location: San Bernard River and GICWW
 Brazoria County, Texas

REVISIONS
April 28, 2017 by MDB

BERG•OLIVER ASSOCIATES, INC.
 ENVIRONMENTAL SCIENCE & LAND USE CONSULTANTS
 14701 ST. MARY'S LANE, SUITE 400
 HOUSTON, TEXAS 77079 PHONE (281)589-0898 <http://www.bergoliver.com>





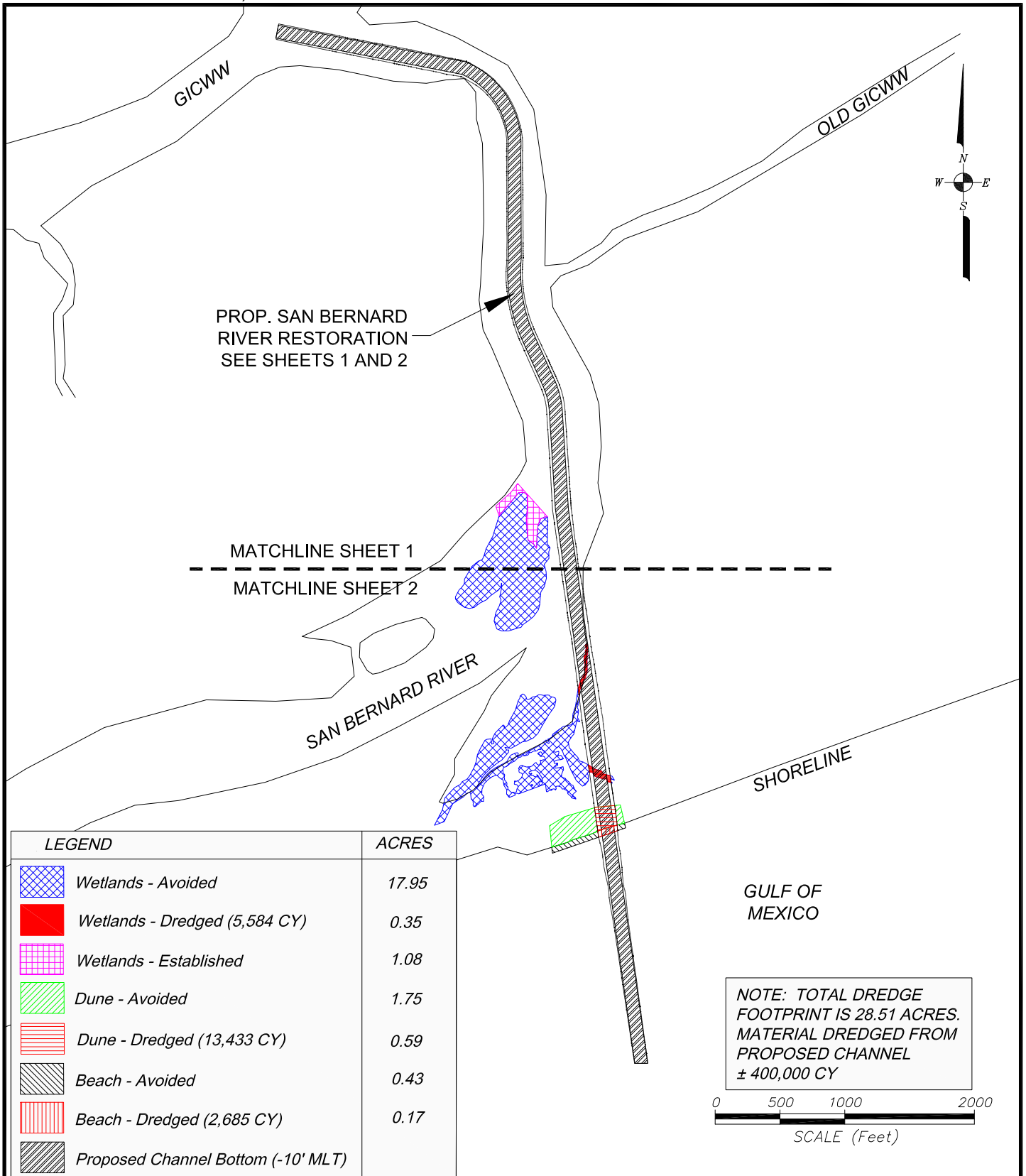
**PROPOSED SAN BERNARD RIVER RESTORATION
OVERVIEW**

PROJECT #: 9335N-IP
FOR: Brazoria County Engineering Department
LOCATION: San Bernard River and GICWW
Brazoria County, Texas

REVISIONS:
April 28, 2017 by MDB

BERG OLIVER ASSOCIATES, INC.
ENVIRONMENTAL SCIENCE &
LAND USE CONSULTANTS
14701 ST. MARY'S LANE, SUITE 400 HOUSTON, TX 77079
PHONE (281) 589-0898 <http://www.bergoliver.com>





**PROPOSED SAN BERNARD RIVER RESTORATION
OVERVIEW**

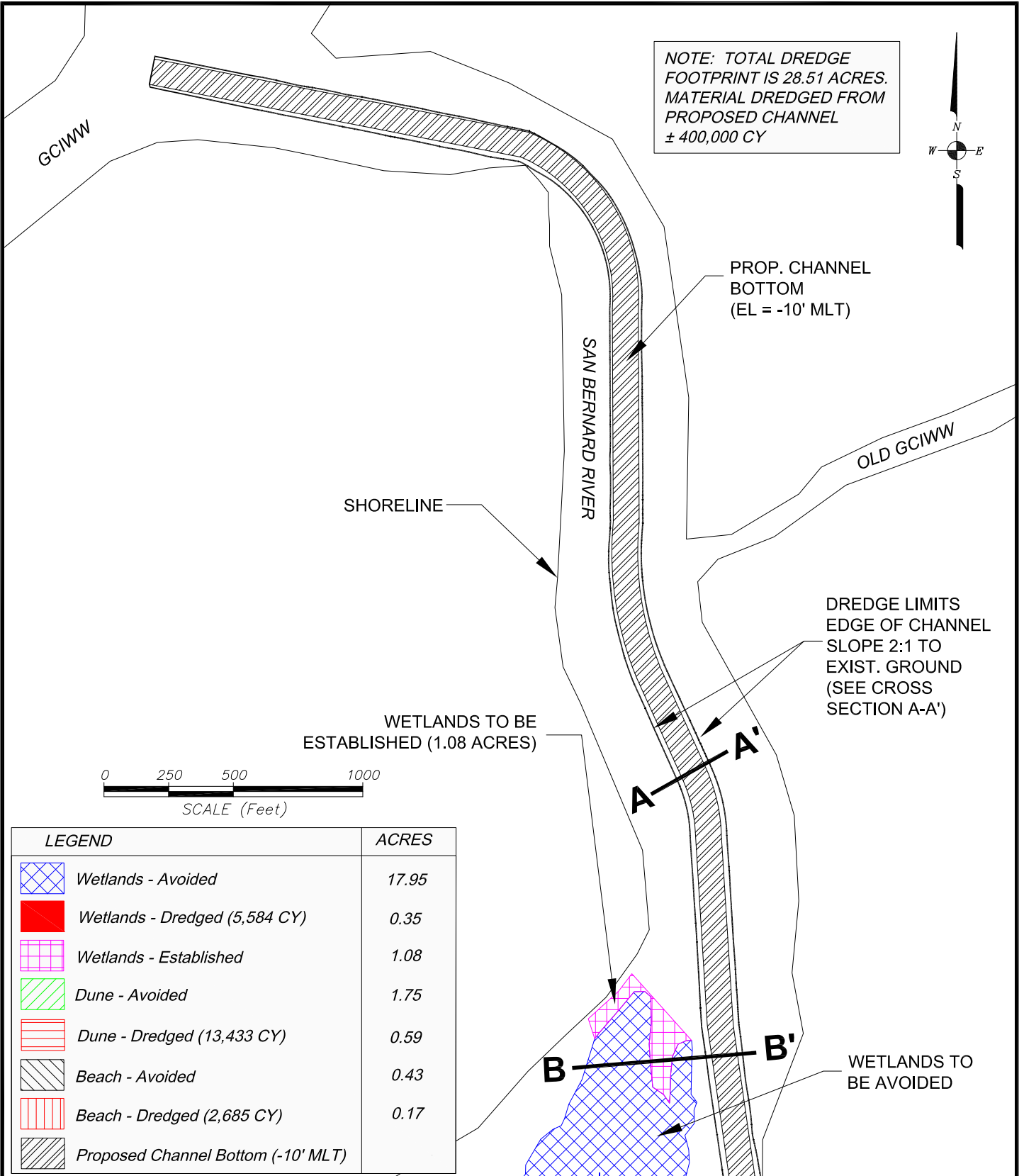
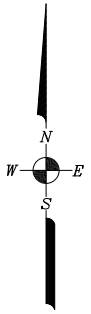
PROJECT #: 9335N-IP
FOR: Brazoria County Engineering Department
LOCATION: San Bernard River and GICWW
Brazoria County, Texas

REVISIONS:
April 28, 2017 by MDB

BERG OLIVER ASSOCIATES, INC.
ENVIRONMENTAL SCIENCE &
LAND USE CONSULTANTS
14701 ST. MARY'S LANE, SUITE 400 HOUSTON, TX 77079
PHONE (281) 589-0898 <http://www.bergoliver.com>



NOTE: TOTAL DREDGE FOOTPRINT IS 28.51 ACRES. MATERIAL DREDGED FROM PROPOSED CHANNEL ± 400,000 CY



WETLANDS TO BE ESTABLISHED (1.08 ACRES)

DREDGE LIMITS
EDGE OF CHANNEL
SLOPE 2:1 TO
EXIST. GROUND
(SEE CROSS SECTION A-A')



LEGEND	ACRES
Wetlands - Avoided	17.95
Wetlands - Dredged (5,584 CY)	0.35
Wetlands - Established	1.08
Dune - Avoided	1.75
Dune - Dredged (13,433 CY)	0.59
Beach - Avoided	0.43
Beach - Dredged (2,685 CY)	0.17
Proposed Channel Bottom (-10' MLT)	

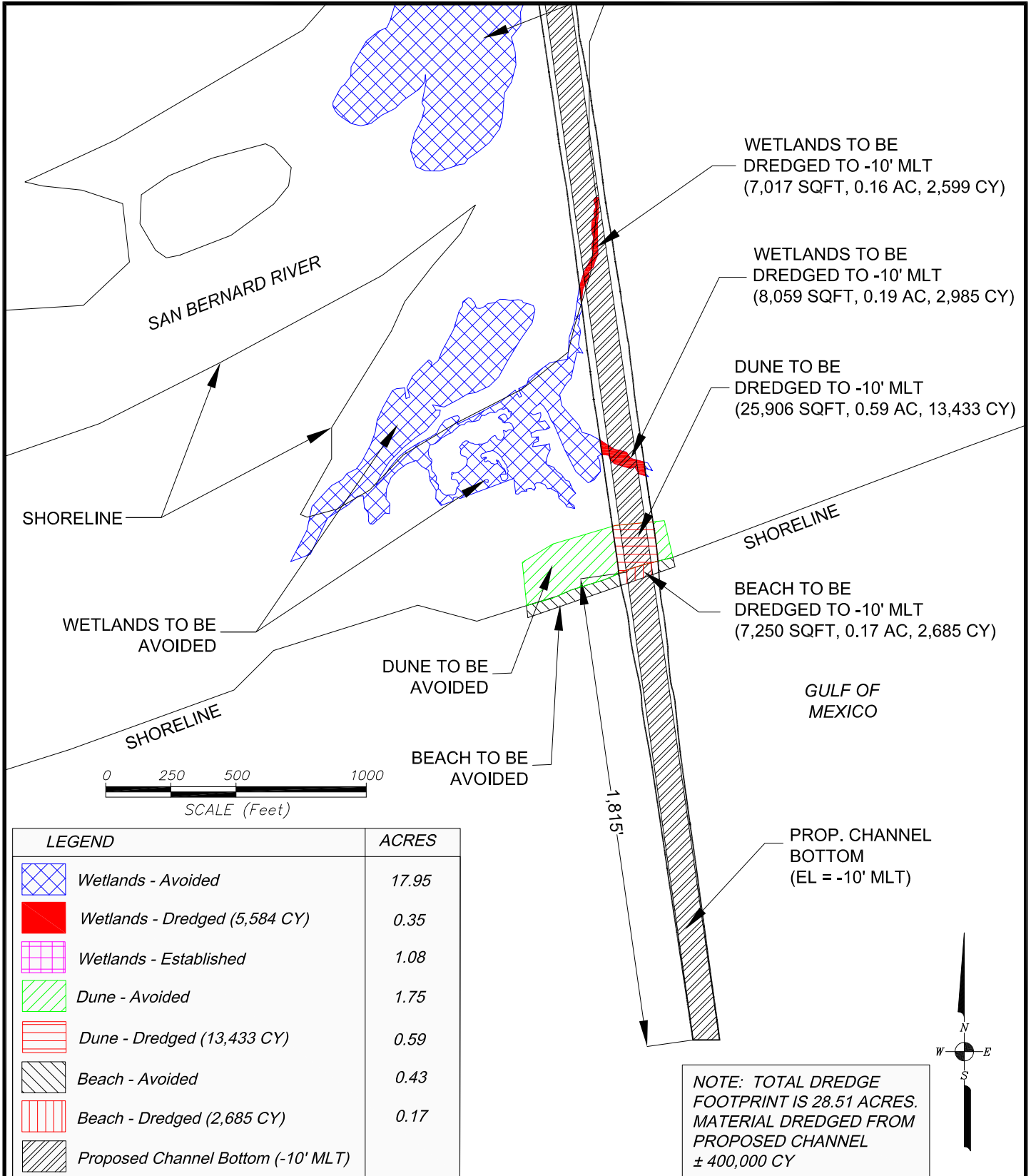
PROPOSED SAN BERNARD RIVER RESTORATION
SHEET 1 OF 2

PROJECT #: 9335N-IP
FOR: Brazoria County Engineering Department
LOCATION: San Bernard River and GICWW
Brazoria County, Texas

REVISIONS:
April 28, 2017 by MDB

BERG OLIVER ASSOCIATES, INC.
ENVIRONMENTAL SCIENCE &
LAND USE CONSULTANTS
14701 ST. MARY'S LANE, SUITE 400 HOUSTON, TX 77079
PHONE (281) 589-0898 <http://www.bergoliver.com>





WETLANDS TO BE DREDGED TO -10' MLT (7,017 SQFT, 0.16 AC, 2,599 CY)

WETLANDS TO BE DREDGED TO -10' MLT (8,059 SQFT, 0.19 AC, 2,985 CY)

DUNE TO BE DREDGED TO -10' MLT (25,906 SQFT, 0.59 AC, 13,433 CY)

BEACH TO BE DREDGED TO -10' MLT (7,250 SQFT, 0.17 AC, 2,685 CY)

GULF OF MEXICO

PROP. CHANNEL BOTTOM (EL = -10' MLT)

NOTE: TOTAL DREDGE FOOTPRINT IS 28.51 ACRES. MATERIAL DREDGED FROM PROPOSED CHANNEL ± 400,000 CY

LEGEND	ACRES
Wetlands - Avoided	17.95
Wetlands - Dredged (5,584 CY)	0.35
Wetlands - Established	1.08
Dune - Avoided	1.75
Dune - Dredged (13,433 CY)	0.59
Beach - Avoided	0.43
Beach - Dredged (2,685 CY)	0.17
Proposed Channel Bottom (-10' MLT)	

PROPOSED SAN BERNARD RIVER RESTORATION
SHEET 2 OF 2

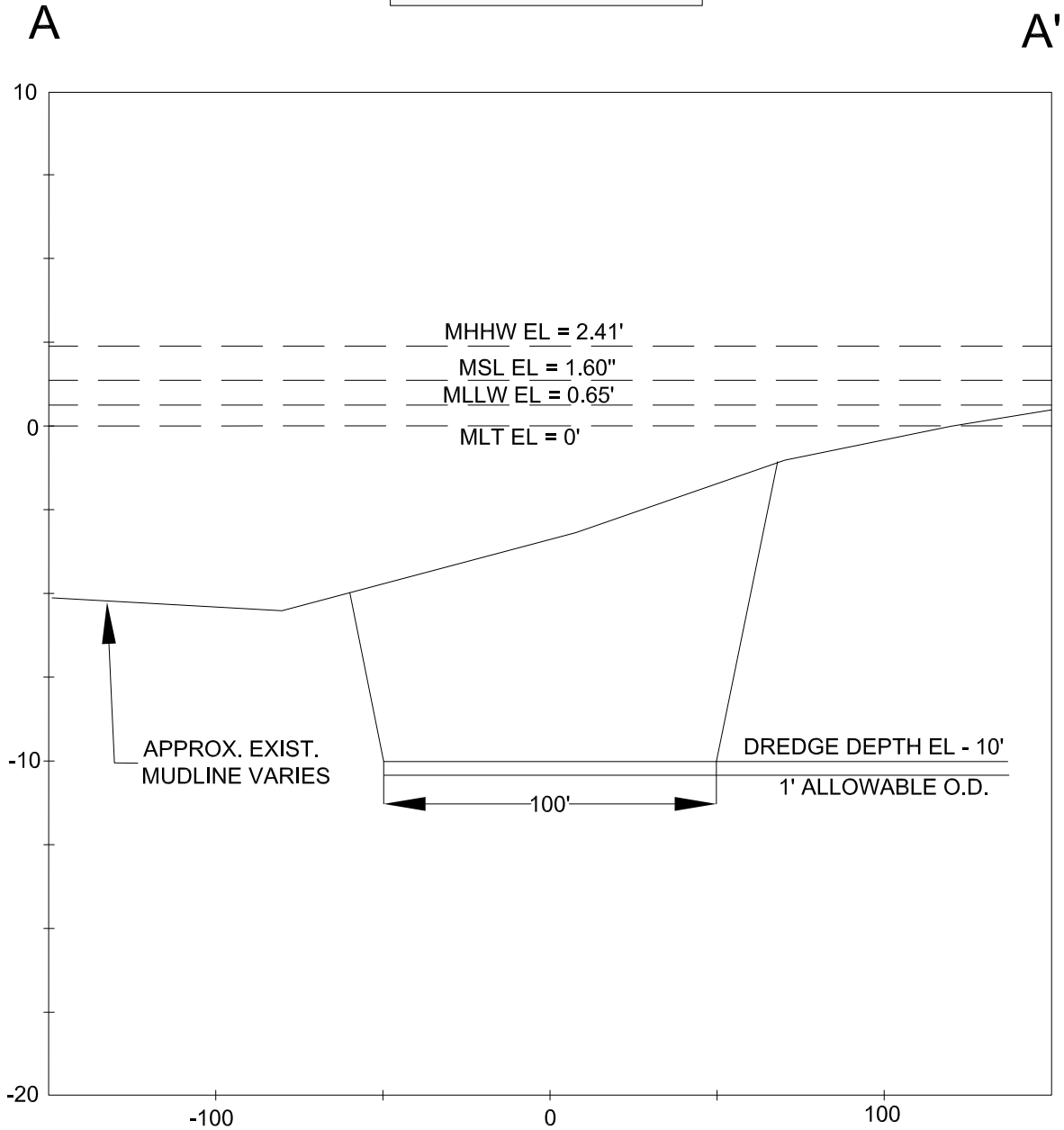
PROJECT #: 9335N-IP
FOR: Brazoria County Engineering Department
LOCATION: San Bernard River and GICWW
Brazoria County, Texas

REVISIONS:
April 28, 2017 by MDB

BERG OLIVER ASSOCIATES, INC.
ENVIRONMENTAL SCIENCE & LAND USE CONSULTANTS
14701 ST. MARY'S LANE, SUITE 400 HOUSTON, TX 77079
PHONE (281) 589-0898 <http://www.bergoliver.com>



NOTE: TOTAL DREDGE
 FOOTPRINT IS 28.51 ACRES.
 MATERIAL DREDGED FROM
 PROPOSED CHANNEL
 ± 400,000 CY



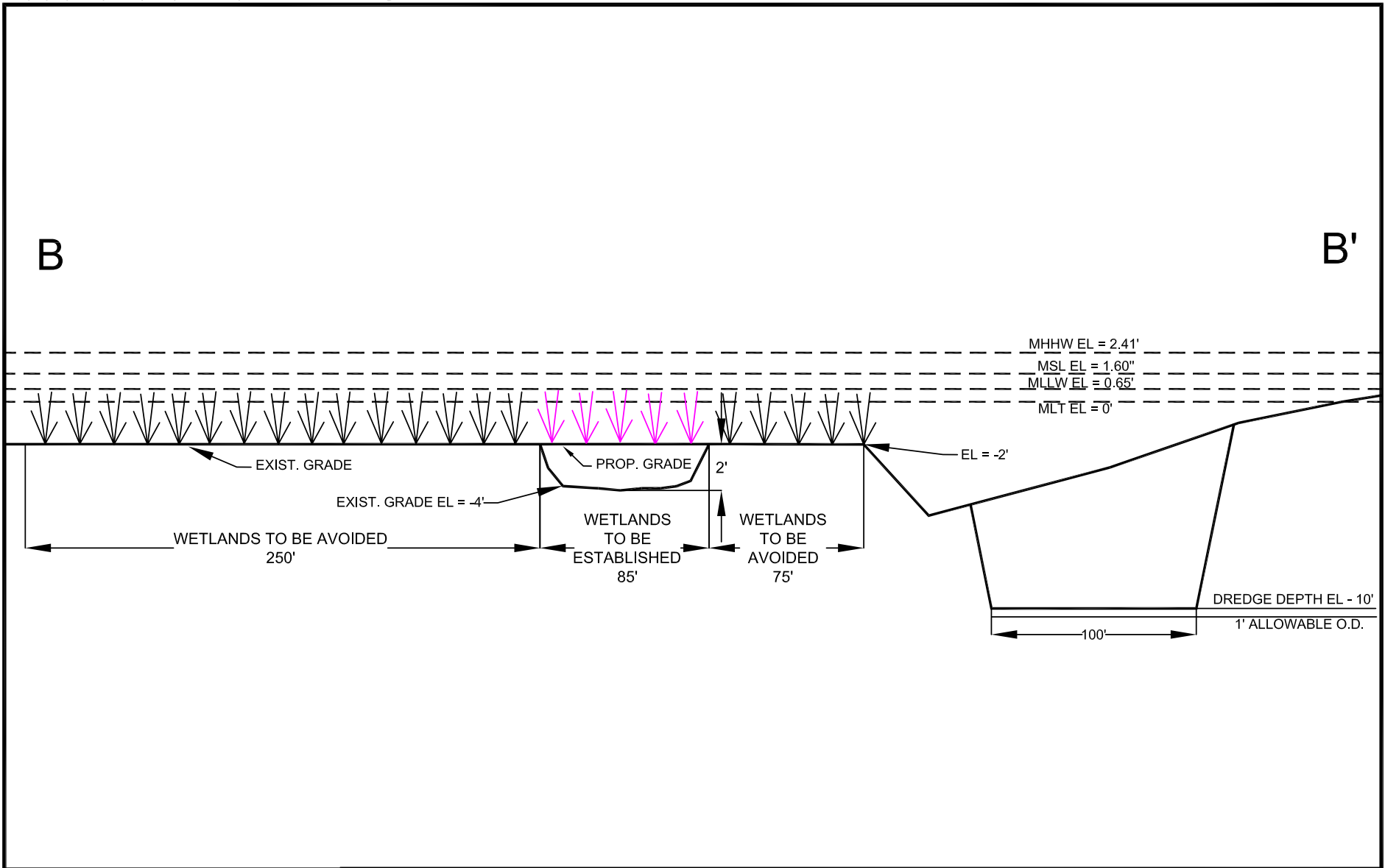
TYPICAL DREDGE CROSS SECTION A-A'

PROJECT #: 9335N-IP
 FOR: Brazoria County Engineering Department
 LOCATION: San Bernard River and GICWW
 Brazoria County, Texas

REVISIONS:
April 28, 2017 by MDB

BERG OLIVER ASSOCIATES, INC.
 ENVIRONMENTAL SCIENCE &
 LAND USE CONSULTANTS
 14701 ST. MARY'S LANE, SUITE 400 HOUSTON, TX 77079
 PHONE (281) 589-0898 <http://www.bergoliver.com>





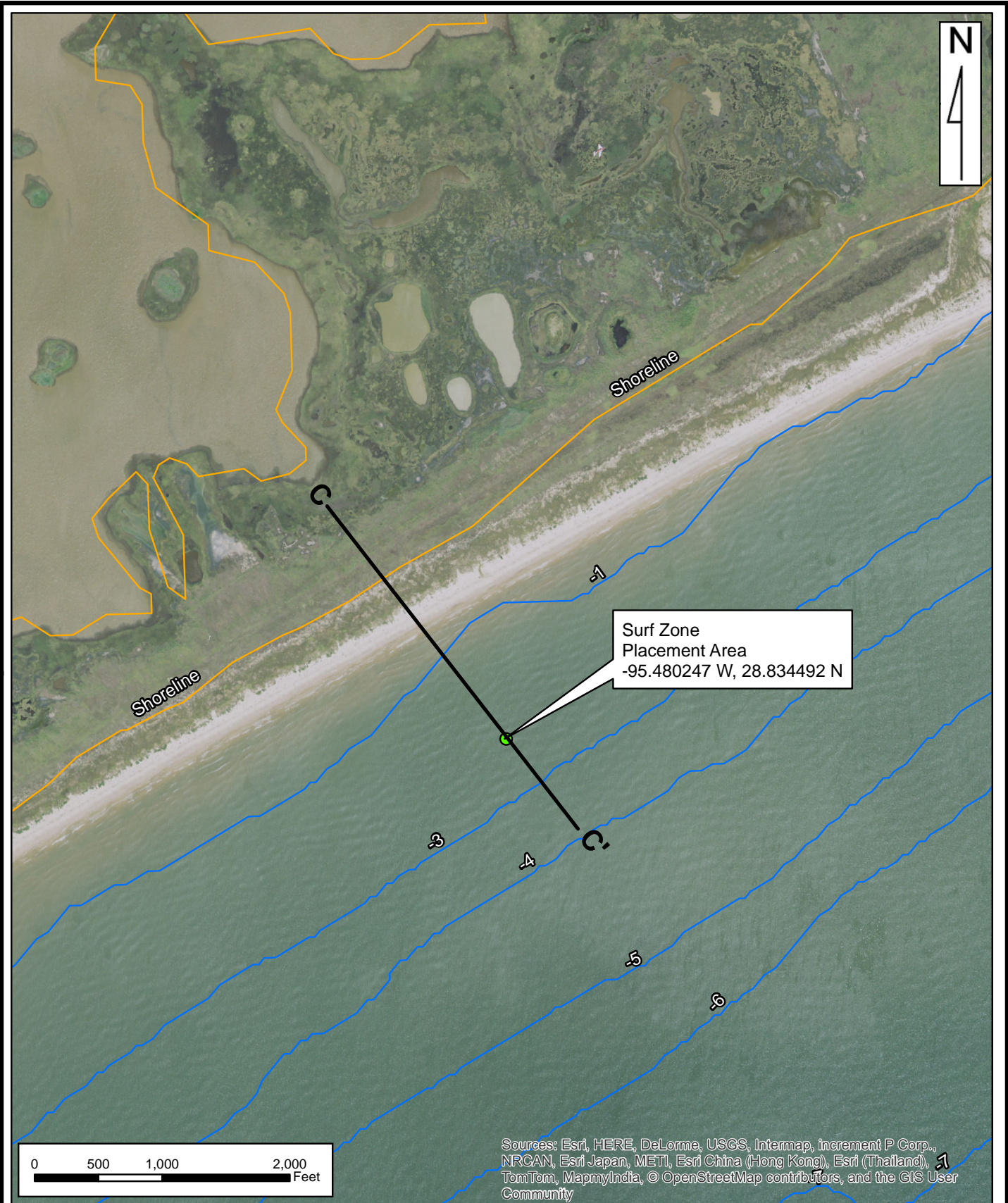
**PROPOSED WETLAND PLANTING
 TYPICAL CROSS SECTION B-B'**

PROJECT #: 9335N-IP
 FOR: Brazoria County Engineering Department
 LOCATION: San Bernard River and GICWW
Brazoria County, Texas

REVISIONS:
July 13, 2017 by MDB

BERG-OLIVER ASSOCIATES, INC.
 ENVIRONMENTAL SCIENCE &
 LAND USE CONSULTANTS
 14701 ST. MARY'S LANE, SUITE 400 HOUSTON, TX 77079
 PHONE (281) 589-0898 <http://www.bergoliver.com>





Sources: Esri, HERE, DeLorme, USGS, Intermap, increment P Corp., NRCAN, Esri Japan, METI, Esri China (Hong Kong), Esri (Thailand), TomTom, MapmyIndia, © OpenStreetMap contributors, and the GIS User Community

SURF ZONE PLACEMENT AREA

Project #: 9335N-IP
 For: Brazoria County Engineering Department
 Location: San Bernard River and GICWW
 Brazoria County, Texas

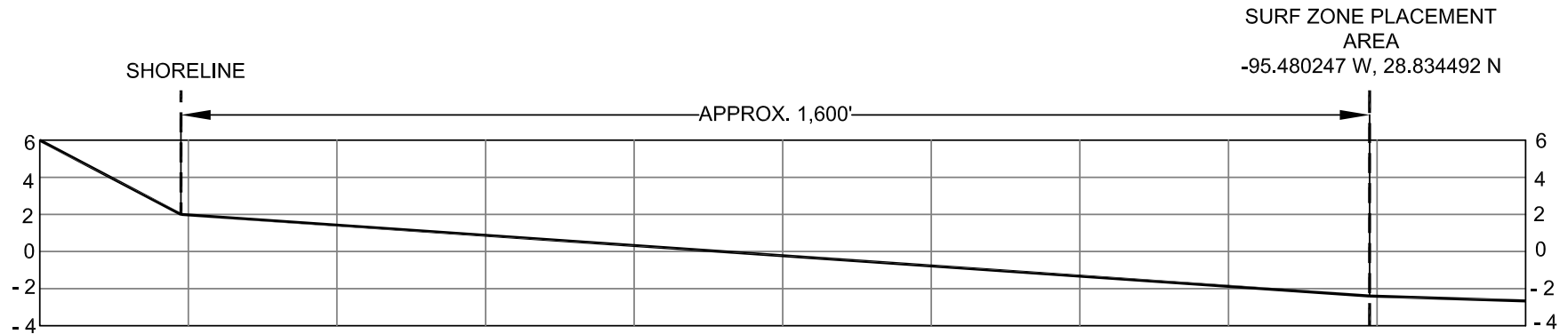
REVISIONS

BERG•OLIVER ASSOCIATES, INC.
 ENVIRONMENTAL SCIENCE & LAND USE CONSULTANTS
 14701 ST. MARY'S LANE, SUITE 400
 HOUSTON, TEXAS 77079 PHONE (281)589-0898 <http://www.bergoliver.com>



C

C'



**SURF ZONE PLACEMENT AREA
 TYPICAL CROSS SECTION C-C'**

PROJECT #: 9335N-IP
 FOR: Brazoria County Engineering Department
 LOCATION: San Bernard River and GICWW
Brazoria County, Texas

REVISIONS:
July 13, 2017 by MDB

BERG & OLIVER ASSOCIATES, INC.
 ENVIRONMENTAL SCIENCE &
 LAND USE CONSULTANTS
 14701 ST. MARY'S LANE, SUITE 400 HOUSTON, TX 77079
 PHONE (281) 589-0898 <http://www.bergoliver.com>

